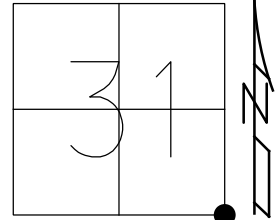


O.D.O.T. DISTRICT 2 SURVEY OFFICE (USE ONLY)

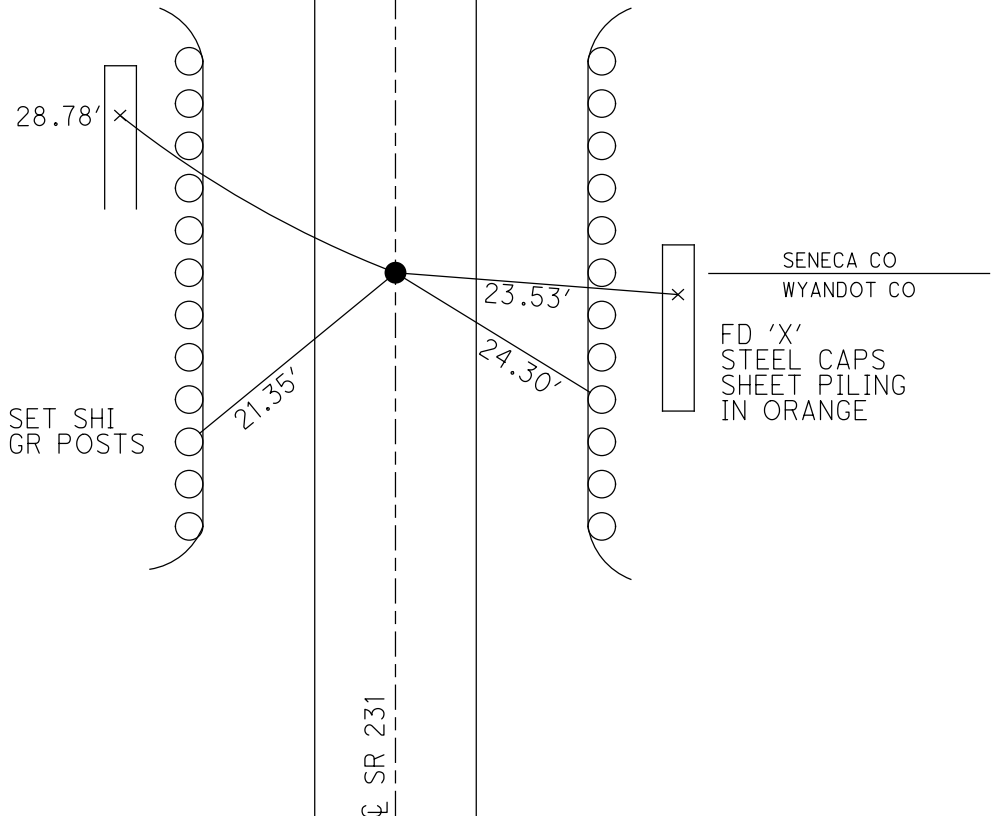
PERSONNEL _____ REFERENCE NO. 1 SHEET 1 OF 34
 NOTES RHOADES DATE 11/6/23 ROUTE SR 231
 H.C. AUBLE WEATHER SUNNY COUNTY SENECA
 R.C. ASTON TEMP. 48° TOWNSHIP EDEN
 NIESE SECTION 31
 DWG BY RHOADES PID 95780 T 1 N R 15 E

TYPE MONUMENT MAG/WASHER
 ON SURFACE - ~~BELOW~~ ON
 OFFSET C PAVEMENT 0.5' ~~RT~~ : RT
9.9' TO RT EDGE PAVEMENT
 STATION: 0+00



HORZ.DATUM: NAD83(2011) GEOID: NAVD88 2018
 GRID: NORTHING: 483976.406 EASTING: 1783428.064

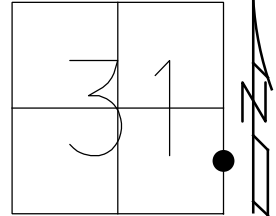
RECORD: P.I.
 STA 0+00
 $\Delta = 00^{\circ}18'40''$ RT
 FD 1" IPIPE
 1 1/2" DOWN
 6/12/97, MB
 SET P.K./WASHER
 8/21/97, MB
 FD P.K./WASHER
 8/16/04, MC
 FD P.K.NAIL
 REF1
 3/26/19
 DNF
 8/16/19, JFO
 FD MAG SPIKE
 REF1AA
 4/18/23, DSA
 SET MAG/WASHER
 11/6/23, DSA



O.D.O.T. DISTRICT 2 SURVEY OFFICE (USE ONLY)

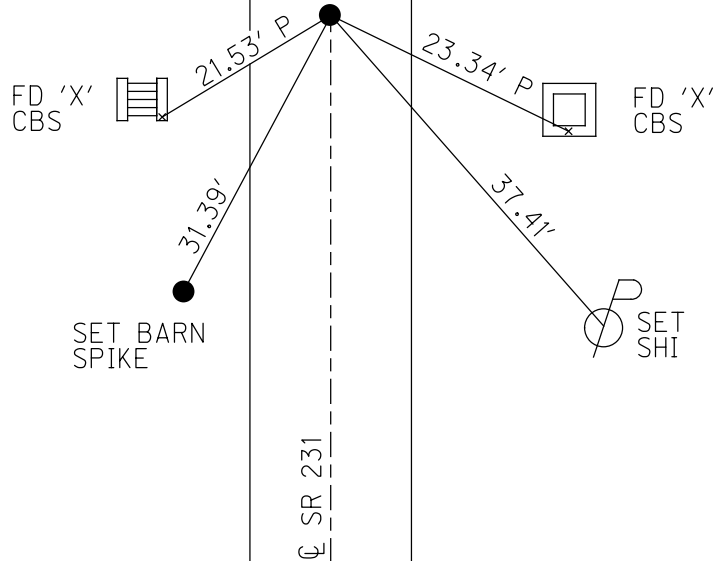
PERSONNEL _____ REFERENCE NO. 1 A SHEET 2 OF 34
 NOTES RHOADES DATE 11/6/23 ROUTE SR 231
 H.C. AUBLE WEATHER SUNNY/WINDY COUNTY SENECA
 R.C. ASTON TEMP. 48° TOWNSHIP EDEN
 NIESE SECTION 31
 DWG BY RHOADES PID 95780 T 1 N R 15 E

TYPE MONUMENT MAG/WASHER
 ON SURFACE - ~~BELOW~~ ON
 OFFSET \varnothing PAVEMENT ON LT : RT
9.9' TO LT EDGE PAVEMENT
 STATION: 11+06



HORZ.DATUM: NAD83(2011) GEOID: NAVD88 2018
 GRID: NORTHING: 485075.788 EASTING: 1783438.777

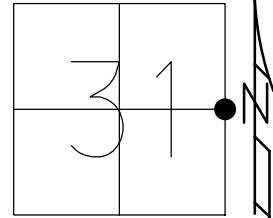
RECORD:
 STA. 11+00
 SM.R.R.SPIKE
 FD SM.R.R.SPIKE
 6/12/97, MB
 SET P.K./WASHER
 8/21/97, MB
 SET MAG/WASHER
 6/08/04
 FD P.K./WASHER
 8/16/04, MC
 FD MAG/WASHER
 REFA1
 3/26/19
 8/16/19, JFO
 FD MAG/WASHER
 REF1A
 4/18/23, TDN
 SET MAG/WASHER
 11/6/23, DSA



O.D.O.T. DISTRICT 2 SURVEY OFFICE (USE ONLY)

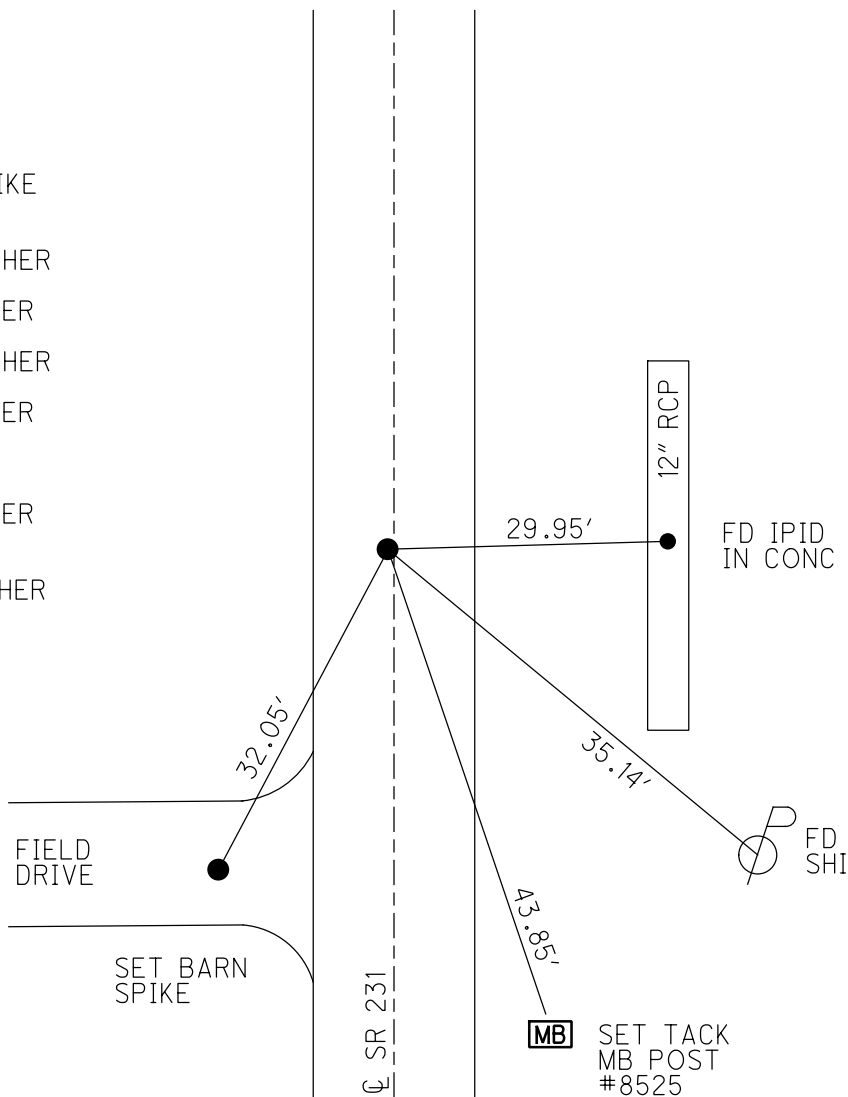
PERSONNEL _____ REFERENCE NO. 2 SHEET 3 OF 34
 NOTES RHOADES DATE 11/6/23 ROUTE SR 231
 H.C. AUBLE WEATHER SUNNY/WINDY COUNTY SENECA
 R.C. ASTON TEMP. 48° TOWNSHIP EDEN
 NIESE SECTION 31
 DWG BY RHOADES PID 95780 T 1 N R 15 E

TYPE MONUMENT MAG/WASHER
 ON SURFACE - ~~BELOW~~ ON
 OFFSET 0.5' LT : ~~RT~~
9.3' TO LT EDGE PAVEMENT
 STATION: 26+48



HORZ.DATUM: NAD83(2011) GEOID: NAVD88 2018
 GRID: NORTHING: 486609.719 EASTING: 1783454.063

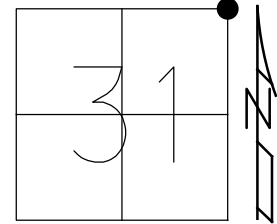
RECORD: P.I.
 STA. 26+33.7
 FD SPIKE
 ON LT R/W
 6" DOWN
 FD LG.R.R.SPIKE
 1.5" DOWN
 6/12/97, MB
 SET P.K./WASHER
 8/21/97, MB
 FD P.K./WASHER
 8/16/04, MC
 SET P.K./WASHER
 8/21/97, MB
 FD P.K./WASHER
 REF2
 3/26/19
 8/16/19, JFO
 FD P.K./WASHER
 REF2
 4/18/23, TDN
 SET MAG/WASHER
 11/6/23, DSA



O.D.O.T. DISTRICT 2 SURVEY OFFICE (USE ONLY)

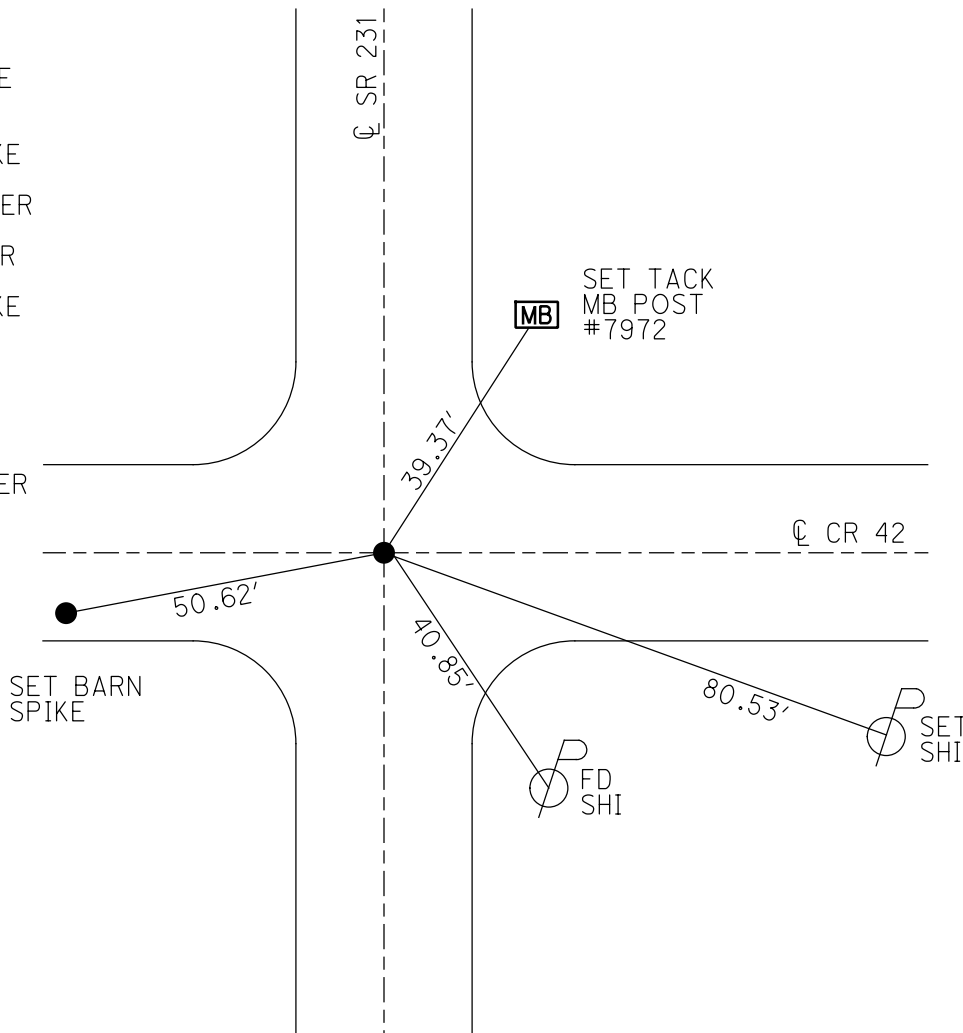
PERSONNEL _____ REFERENCE NO. 3 SHEET 4 OF 34
 NOTES RHOADES DATE 11/6/23 ROUTE SR 231
 H.C. AUBLE WEATHER SUNNY/WINDY COUNTY SENECA
 R.C. ASTON TEMP. 48° TOWNSHIP EDEN
 _____ NIESE SECTION 31
 DWG BY RHOADES PID 95780 T 1 N R 15 E

TYPE MONUMENT MAG/WASHER
 ON SURFACE - ~~BELOW~~ ON
 OFFSET ☉ PAVEMENT ON LT : RT
10.7' TO LT EDGE PAVEMENT
 STATION: 53+04



HORIZ.DATUM: NAD83(2011) GEOID: NAVD88 2018
 GRID: NORTHING: 489257.630 EASTING: 1783492.520

RECORD:
 STA.52+82
 FD SM.SPIKE
 ATOP R.R.SPIKE
 ON ☉ R/W
 4 1/2" DOWN
 FD SM.R.R.SPIKE
 6/12/97, MB
 SET P.K./WASHER
 8/21/97, MB
 FD P.K./WASHER
 8/16/04, MC
 FD SM.R.R.SPIKE
 REF3
 4 1/2" DOWN
 3/26/19
 8/16/19, JFO
 REF3
 4/18/23, TDN
 SET MAG/WASHER
 11/6/23, DSA



O.D.O.T. DISTRICT 2 SURVEY OFFICE (USE ONLY)

PERSONNEL _____ REFERENCE NO. 4 SHEET 5 OF 34
NOTES RHOADES DATE 11/6/23 ROUTE SR 231
H.C. AUBLE WEATHER SUNNY/WINDY COUNTY SENECA
R.C. ASTON TEMP. 48° TOWNSHIP EDEN
NIESE SECTION 30
DWG BY RHOADES PID 95780 T 1 N R 15 E

TYPE MONUMENT D.N.F.-R.R.SPIKE

~~ON SURFACE~~ - BELOW 4"

OFFSET \varnothing PAVEMENT 0.6" ~~LT~~ : RT

9.8' TO RT EDGE PAVEMENT

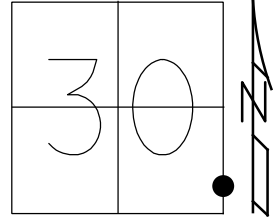
STATION: 60+97.20

HORZ.DATUM: -

GEOID: -

GRID: NORTHING: -

EASTING: -



RECORD:
STA.60+97.2
FD R.R.SPIKE
ON \varnothing R/W
4 1/2" DOWN
FD R.R.SPIKE
4" DOWN
6/12/97, MB
SET P.K./WASHER
8/21/97, MB
D.N.F
6/8/04, MB
3/26/19, JFO
4/18/23, TDN
11/6/23, DSA

\varnothing SR 231

O.D.O.T. DISTRICT 2 SURVEY OFFICE (USE ONLY)

PERSONNEL

REFERENCE NO. 5

SHEET 6 OF 34

NOTES RHOADES
 H.C. AUBLE
 R.C. ASTON
NIESE

DATE 11/6/23
 WEATHER SUNNY/WINDY
 TEMP. 48°

ROUTE SR 231
 COUNTY SENECA
 TOWNSHIP EDEN
 SECTION 30

DWG BY RHOADES PID 95780

T 1 N R 15 E

TYPE MONUMENT MAG/WASHER

ON SURFACE - ~~BELOW~~ ON

OFFSET ☉ PAVEMENT 1.7' ~~ET~~ : RT

8.5' TO RT EDGE PAVEMENT

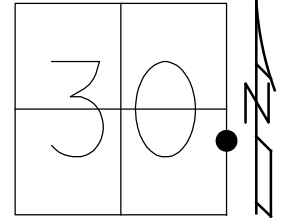
STATION: 74+14

HORZ.DATUM: NAD83(2011)

GEOID: NAVD88 2018

GRID: NORTHING: 491371.373

EASTING: 1783524.511



SET SHI
22" ELM



51.10'

FD SHI
STUB



38.57'

68.03'

SET MAG
8"



☉ SR 231

41.08'



RECORD: P.I.
 STA.73+97.15
 1940 PLAN
 SM.SPIKE TOP
 P.K.NAIL ON ☉ R/W
 1 1/2" DOWN
 SET P.K./WASHER
 8/21/97
 FD P.K./WASHER
 8/16/04, MC
 FD P.K./WASHER
 REF5
 3/26/19,
 8/16/19, JFO
 FD P.K./WASHER
 REF5
 4/18/23, TDN
 SET MAG/WASHER
 11/6/23, DSA

O.D.O.T. DISTRICT 2 SURVEY OFFICE (USE ONLY)

PERSONNEL

REFERENCE NO. 6

SHEET 7 OF 34

NOTES RHOADES

DATE 11/6/23

ROUTE SR 231

H.C. AUBLE

WEATHER SUNNY/WINDY

COUNTY SENECA

R.C. ASTON

TEMP. 48°

TOWNSHIP EDEN

NIESE

SECTION 30

DWG BY RHOADES

PID 95780

T 1 N R 15 E

TYPE MONUMENT MAG/WASHER

ON SURFACE - ~~BELOW~~ ON

OFFSET \odot PAVEMENT 3.2' ~~LT~~ : RT

8.1' TO RT EDGE PAVEMENT

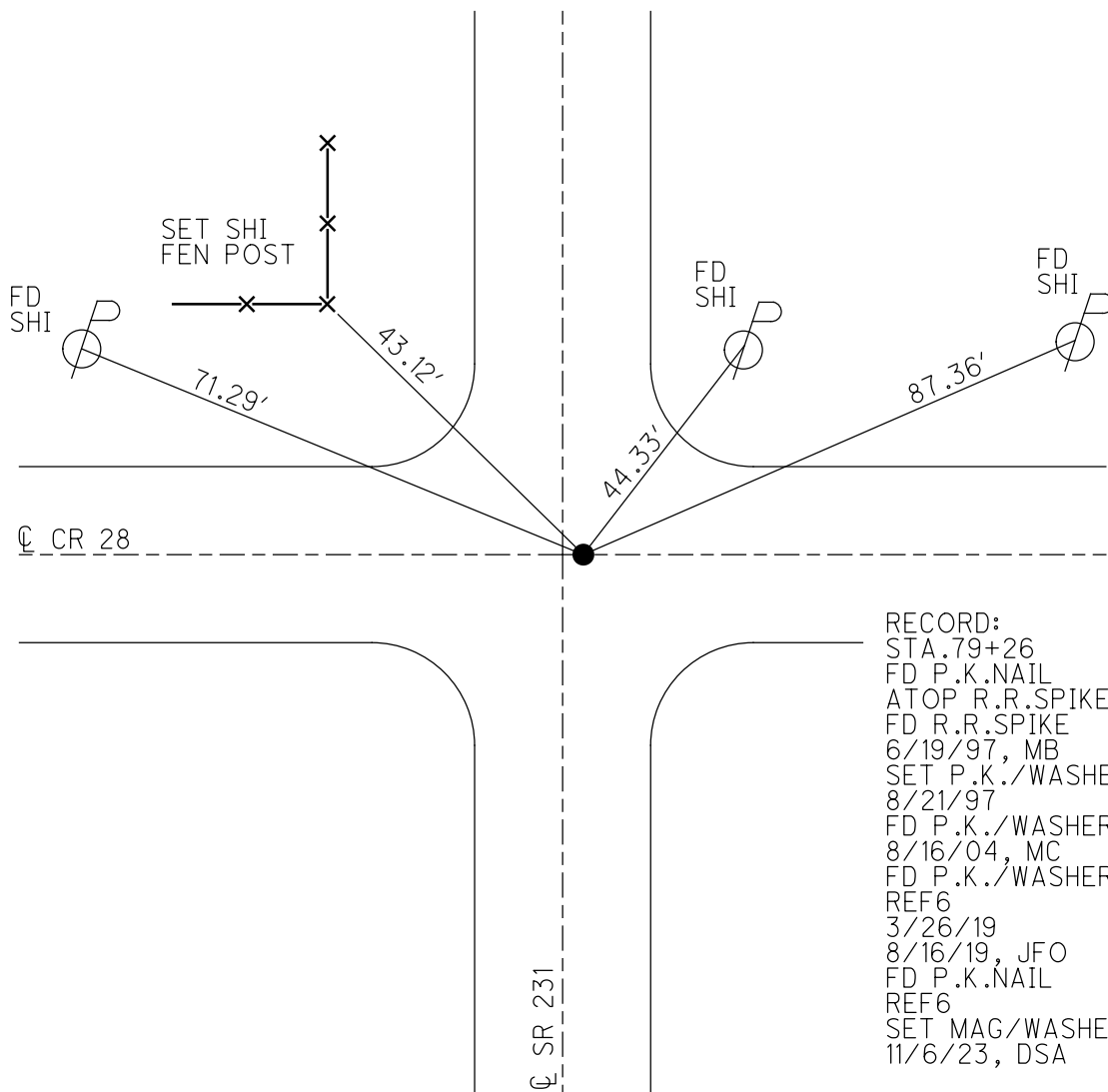
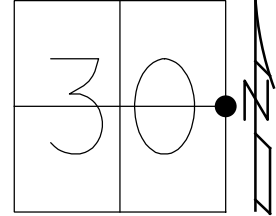
STATION: 79+45

HORIZ.DATUM: NAD83(2011)

GEOID: NAVD88 2018

GRID: NORTHING: 491901.446

EASTING: 1783531.441



O.D.O.T. DISTRICT 2 SURVEY OFFICE (USE ONLY)

PERSONNEL

REFERENCE NO. 7

SHEET 8 OF 34

NOTES RHOADES

DATE 11/6/23

ROUTE SR 231

H.C. AUBLE

WEATHER SUNNY

COUNTY SENECA

R.C. ASTON

TEMP. 48°

TOWNSHIP EDEN

NIESE

SECTION 30

DWG BY RHOADES

PID 95780

T 1 N R 15 E

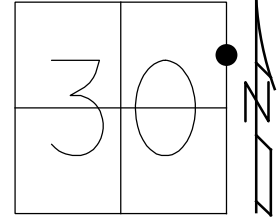
TYPE MONUMENT MAG/WASHER

ON SURFACE - ~~BELOW~~ ON

OFFSET 7.0' \odot PAVEMENT 2.5' LT : ~~RT~~

7.0' TO LT EDGE PAVEMENT

STATION: 100+28



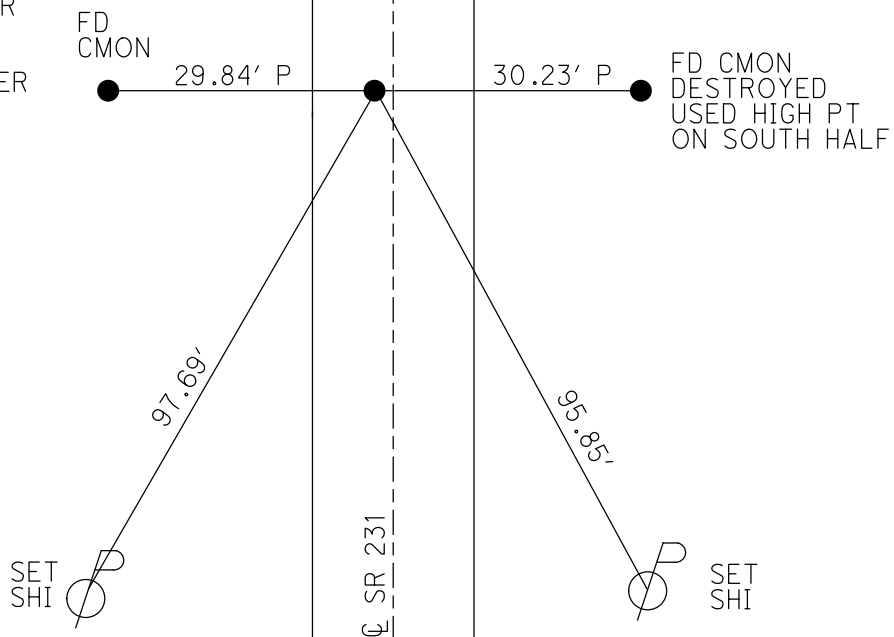
HORZ. DATUM: NAD83(2011)

GEOID: NAVD88 2018

GRID: NORTHING: 493975.039

EASTING: 1783556.754

RECORD: P.I.
 STA. 100+00
 FD R.R. SPIKE
 ON \odot RW
 4 1/2" DOWN
 FD R.R. SPIKE
 4" DOWN
 6/19/97, MB
 SET P.K./WASHER
 8/21/97, MB
 FD P.K./WASHER
 8/16/04, MC
 FD P.K./WASHER
 REF 7
 3/26/19
 8/16/19, JFO
 FD P.K./WASHER
 REF 7
 4/18/23, TDN
 SET MAG/WASHER
 11/6/23, DSA



O.D.O.T. DISTRICT 2 SURVEY OFFICE (USE ONLY)

PERSONNEL _____ REFERENCE NO. 7 A SHEET 9 OF 34
 NOTES RHOADES DATE 11/6/23 ROUTE SR 231
 H.C. AUBLE WEATHER SUNNY/WINDY COUNTY SENECA
 R.C. ASTON TEMP. 48° TOWNSHIP EDEN
 _____ NIESE SECTION 19
 DWG BY RHOADES PID 95780 T 1 N R 15 E

TYPE MONUMENT MAG/WASHER

~~ON SURFACE~~ - BELOW ON

OFFSET \odot PAVEMENT 0.5' LT : ~~RT~~

10.0' TO LT EDGE PAVEMENT

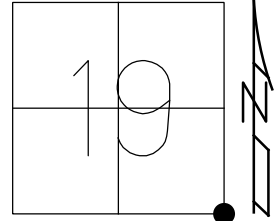
STATION: 105+94

HORZ. DATUM: NAD83(2011)

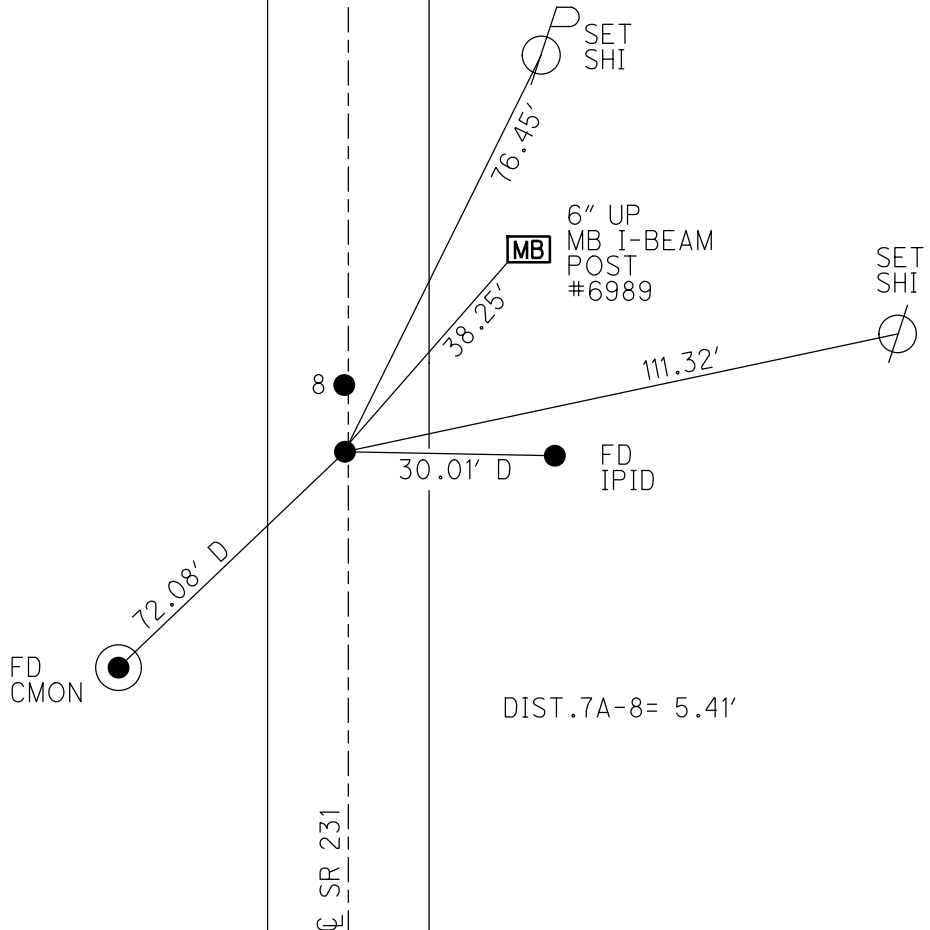
GEOID: NAVD88 2018

GRID: NORTHING: 494540.629

EASTING: 1783563.778



RECORD:
 FD MAG NAIL
 REF7A
 4/18/23, TDN
 SET MAG/WASHER
 11/6/23, DSA

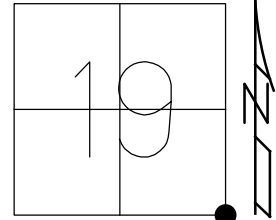


O.D.O.T. DISTRICT 2 SURVEY OFFICE (USE ONLY)

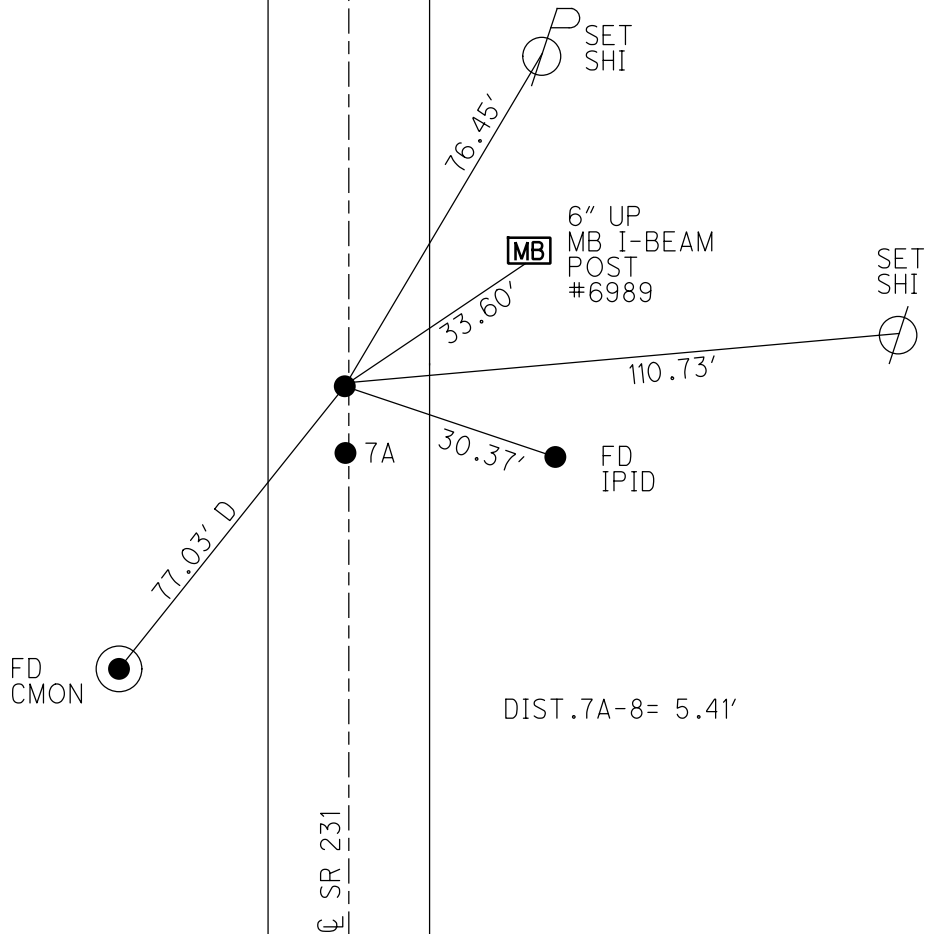
PERSONNEL _____ REFERENCE NO. 8 SHEET 9 OF 34
 NOTES RHOADES DATE 11/6/23 ROUTE SR 231
 H.C. AUBLE WEATHER SUNNY/WINDY COUNTY SENECA
 R.C. ASTON TEMP. 48° TOWNSHIP EDEN
 NIESE SECTION 19
 DWG BY RHOADES PID 95780 T 1 N R 15 E

TYPE MONUMENT MAG/WASHER
~~ON SURFACE~~ - BELOW ON
 OFFSET 0.5' LT : ~~RT~~
10.0' TO LT EDGE PAVEMENT
 STATION: 106+00

HORZ. DATUM: NAD83(2011) GEOID: NAVD88 2018
 GRID: NORTHING: 494546.041 EASTING: 1783563.831



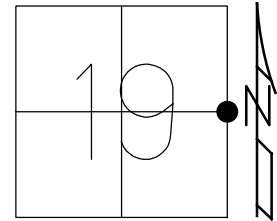
RECORD:
 STA. 105+70.7
 FD P.K. NAIL
 ATOP R.R. SPIKE
 ON 0 R/W
 1" DOWN
 FD R.R. SPIKE
 2" DOWN
 6/19/97, MB
 SET P.K./WASHER
 8/21/97, MB
 FD P.K./WASHER
 8/16/04, MC
 FD P.K./WASHER
 REF8
 3/26/19
 8/16/19, JFO
 FD P.K./WASHER
 REF8
 4/18/23, TDN
 SET MAG/WASHER
 11/6/23, DSA



O.D.O.T. DISTRICT 2 SURVEY OFFICE (USE ONLY)

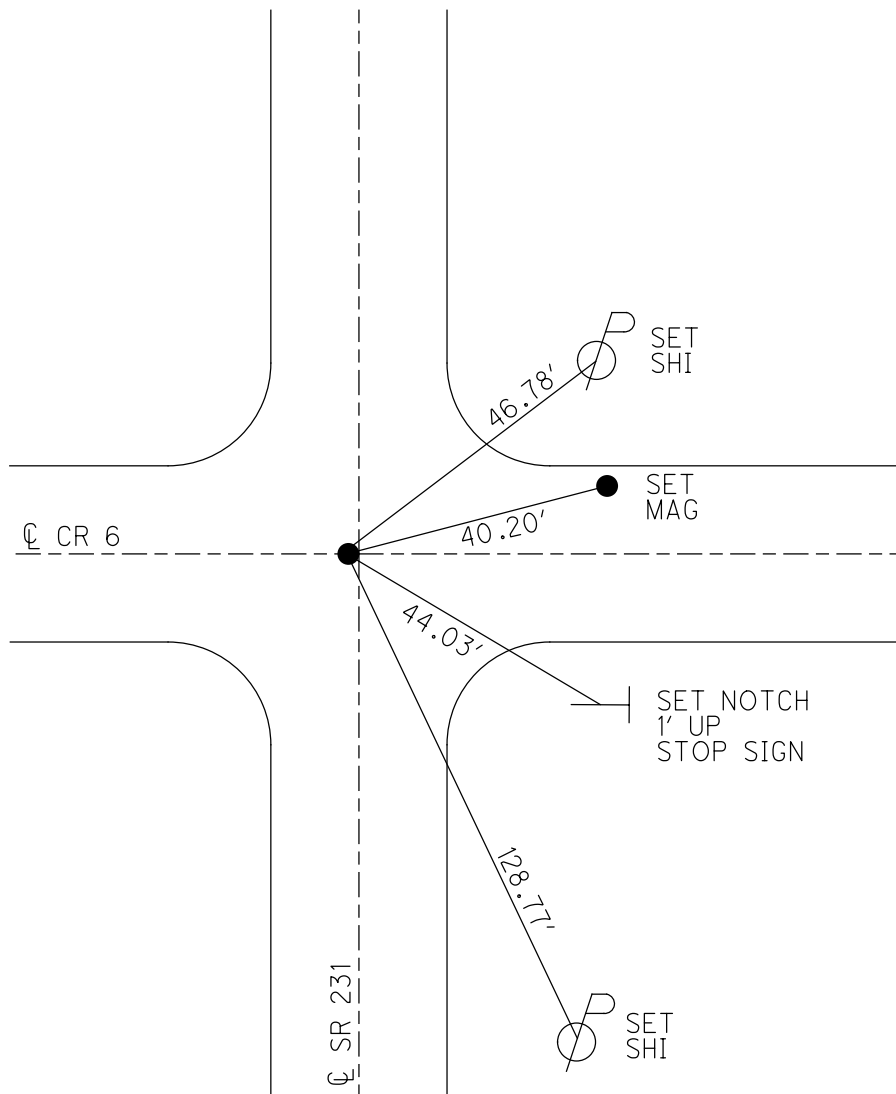
PERSONNEL	REFERENCE NO. <u>9</u>	SHEET <u>11</u> OF <u>34</u>
NOTES	RHOADES	DATE <u>11/6/23</u>
H.C.	AUBLE	WEATHER <u>SUNNY/WINDY</u>
R.C.	ASTON	TEMP. <u>48°</u>
	NIESE	
DWG BY	RHOADES	PID <u>95780</u>
		ROUTE <u>SR 231</u>
		COUNTY <u>SENECA</u>
		TOWNSHIP <u>EDEN</u>
		SECTION <u>19</u>
		T <u>1</u> N R <u>15</u> E

TYPE MONUMENT MAG/WASHER
 ON SURFACE - ~~BELOW~~ ON
 OFFSET 0.5' LT : ~~RT~~
9.6' TO LT EDGE PAVEMENT
 STATION: 132+53



HORZ.DATUM: NAD83(2011) GEOID: NAVD88 2018
 GRID: NORTHING: 497193.500 EASTING: 1783593.156

RECORD:
 STA.132+17.8
 FD IPIN
 ON CR R/W
 FD IPIN
 6/19/97, MB
 SET P.K./WASHER
 8/21/97, MB
 FD P.K./WASHER
 8/16/04, MC
 FD P.K./WASHER
 REF9
 3/26/19
 8/16/19, JFO
 2/10/23, JMR
 FD P.K.SHANK
 REF9
 SET MAG/WASHER
 11/6/23, DSA



O.D.O.T. DISTRICT 2 SURVEY OFFICE (USE ONLY)

PERSONNEL

REFERENCE NO. 10

SHEET 12 OF 34

NOTES RHOADES

DATE 11/6/23

ROUTE SR 231

H.C. AUBLE

WEATHER SUNNY/WINDY

COUNTY SENECA

R.C. ASTON

TEMP. 48°

TOWNSHIP EDEN

NIESE

DWG BY RHOADES PID 95780

SECTION 19

T 1 N R 15 E

TYPE MONUMENT MAG/WASHER

ON SURFACE - ~~BELOW~~ ON

OFFSET CL PAVEMENT 1.4' LT : ~~RT~~

8.0' TO LT EDGE PAVEMENT

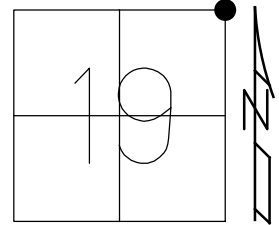
STATION: 159+07

HORZ.DATUM: NAD83(2011)

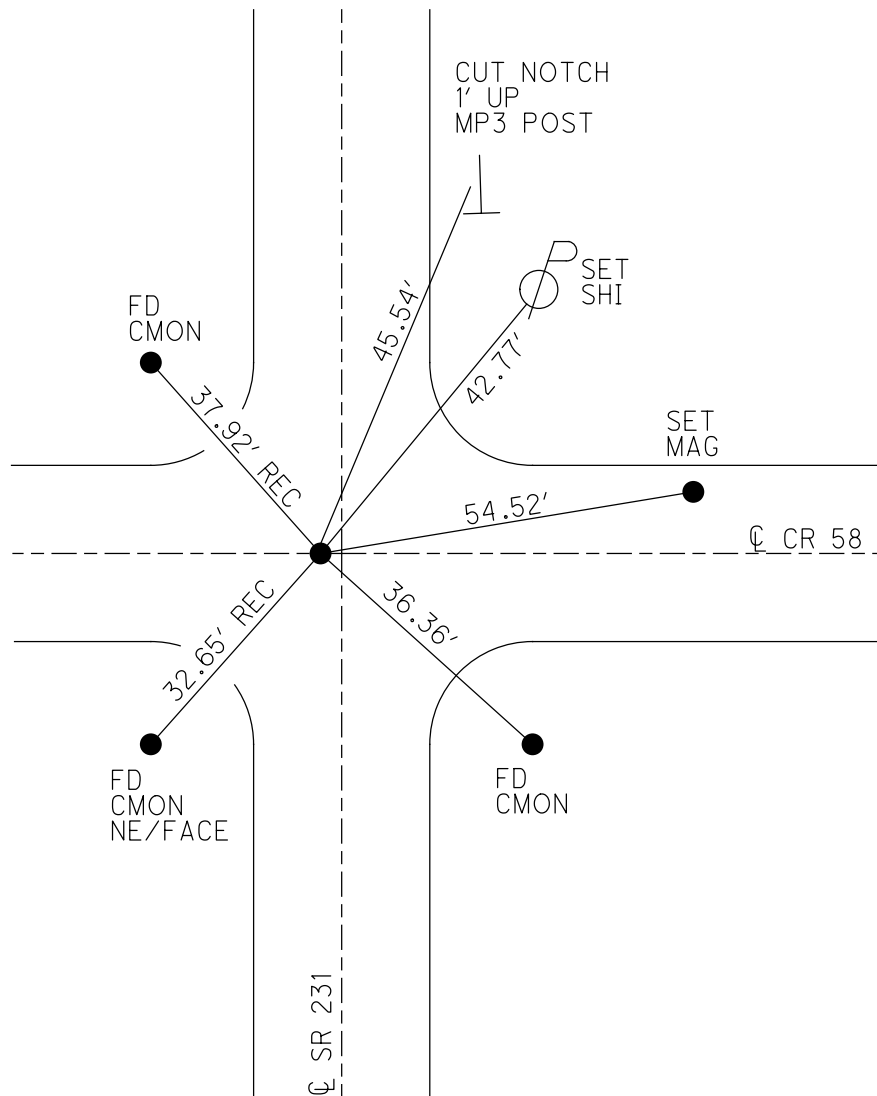
GEOID: NAVD88 2018

GRID: NORTHING: 499839.300

EASTING: 1783614.656



RECORD:
 STA.158+64.6
 FD R.R.SPIKE
 4" DOWN
 6/19/97, MB
 SET P.K.NAIL
 8/21/97, MB
 FD P.K./WASHER
 8/16/04, MC
 FD R.R.SPIKE
 4 1/2" DOWN
 REF10
 3/26/19
 8/16/19, JFO
 2/10/23, JMR
 FD R.R.SPIKE
 4" DOWN
 REF10
 4/19/23, TDN
 SET MAG/WASHER
 11/6/23, DSA

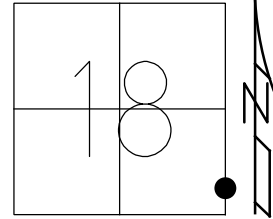


O.D.O.T. DISTRICT 2 SURVEY OFFICE (USE ONLY)

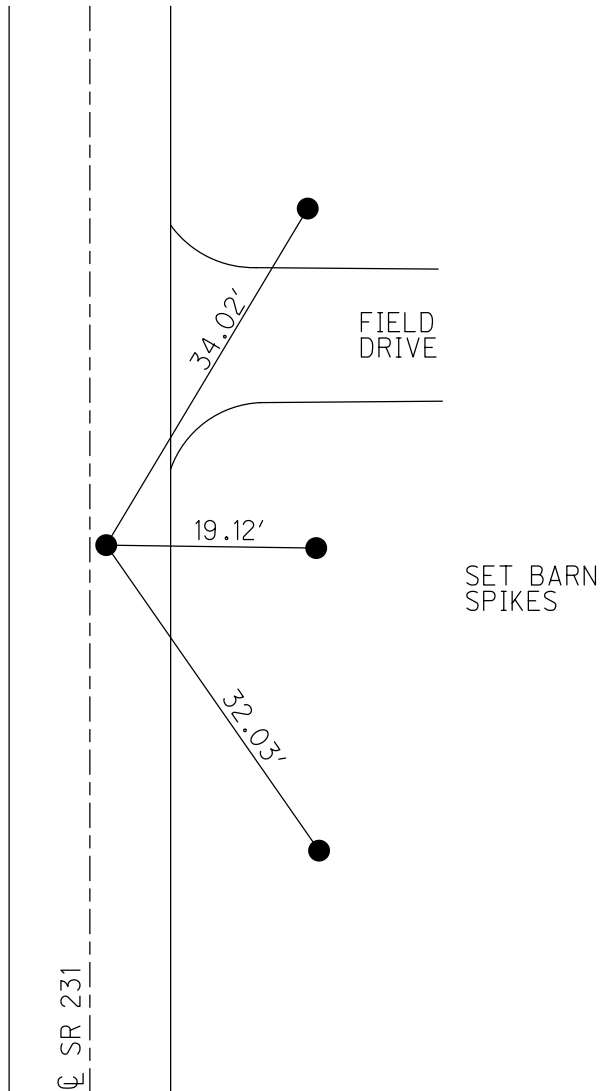
PERSONNEL _____ REFERENCE NO. 11 SHEET 13 OF 34
 NOTES RHOADES DATE 11/3/23 ROUTE SR 231
 H.C. AUBLE WEATHER SUNNY COUNTY SENECA
 R.C. ASTON TEMP. 45° TOWNSHIP EDEN
 NIESE SECTION 18
 DWG BY RHOADES PID 95780 T 1 N R 15 E

TYPE MONUMENT MAG/WASHER
 ON SURFACE - ~~BELOW~~ ON
 OFFSET $\text{\textcircled{C}}$ PAVEMENT 2.8' ~~LT~~ : RT
7.0' TO RT EDGE PAVEMENT
 STATION: 168+11

HORZ.DATUM: NAD83(2011) GEOID: NAVD88 2018
 GRID: NORTHING: 500739.117 EASTING: 1783620.939



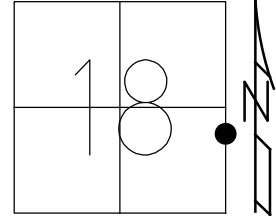
RECORD:
 STA.167+64.6
 $\Delta = 2^{\circ}18' 40''$ LT
 6/29/81, CRONIN
 FD IPIN
 W/DIMPLE
 3" DOWN
 6/19/97, MB
 SET P.K./NAIL
 8/21/97, MB
 FD P.K./WASHER
 8/16/04, MC
 FD P.K./WASHER
 REF11
 3/27/19
 8/16/19, JFO
 2/10/23, JMR
 FD P.K./WASHER
 REF11
 4/19/23, TDN
 SET MAG/WASHER
 11/3/23, DSA



O.D.O.T. DISTRICT 2 SURVEY OFFICE (USE ONLY)

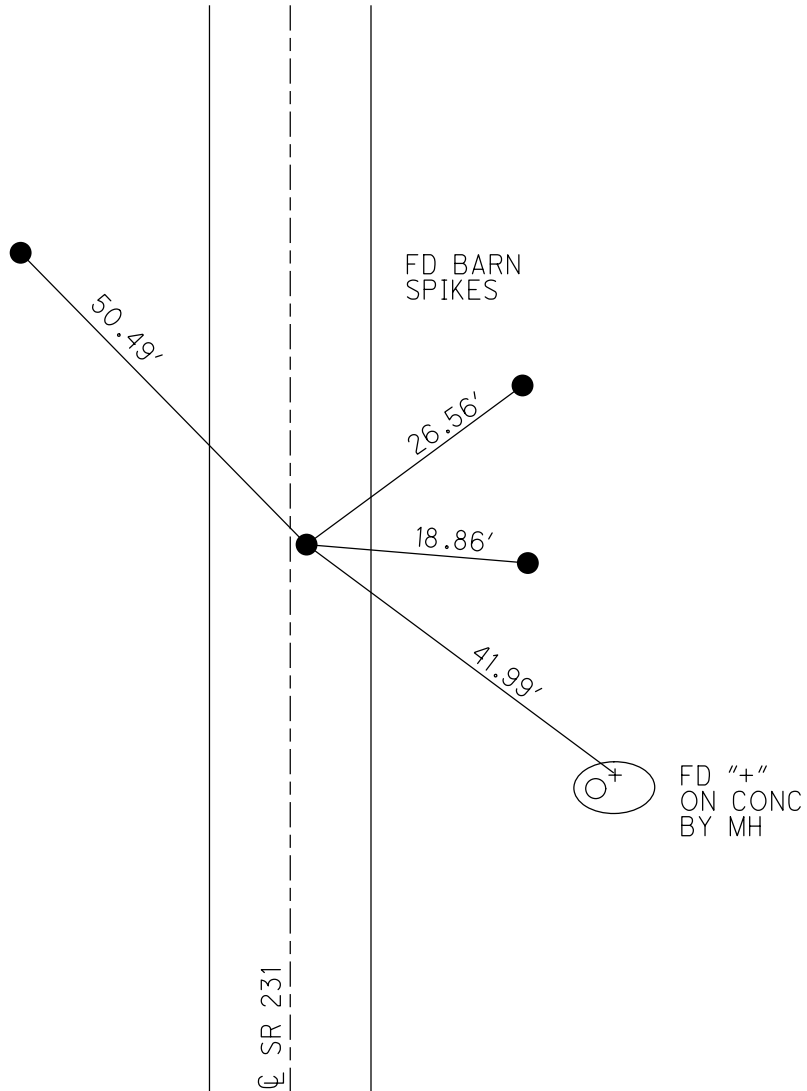
PERSONNEL _____ REFERENCE NO. 12 SHEET 14 OF 34
 NOTES RHOADES DATE 11/3/23 ROUTE SR 231
 H.C. AUBLE WEATHER SUNNY COUNTY SENECA
 R.C. ASTON TEMP. 45° TOWNSHIP EDEN
 _____ NIESE SECTION 18
 DWG BY RHOADES PID 95780 T 1 N R 15 E

TYPE MONUMENT MAG/WASHER
 ON SURFACE - ~~BELOW~~ ON
 OFFSET CL PAVEMENT 1.4' ~~RT~~ : RT
8.0' TO RT EDGE PAVEMENT
 STATION: 178+15



HORZ. DATUM: NAD83(2011) GEOID: NAVD88 2018
 GRID: NORTHING: 501738.988 EASTING: 1783587.814

RECORD: P.I.
 STA. 177+66.44
 $\Delta = 8^\circ 14' RT$
 FD IPIPE
 6/29/81, CRONIN
 D.N.F. IPIPE
 FD BOLT SPIKE
 2" DOWN
 6/19/97, MB
 SET P.K./WASHER
 8/21/97, MB
 FD P.K./WASHER
 8/16/04, MC
 FD P.K./WASHER
 REF12
 3/27/19
 8/16/19, JFO
 2/10/23, JMR
 FD P.K./WASHER
 REF12
 4/19/23, TDN
 SET MAG/WASHER
 11/3/23, DSA



O.D.O.T. DISTRICT 2 SURVEY OFFICE (USE ONLY)

PERSONNEL _____ REFERENCE NO. 12 A SHEET 15 OF 34
 NOTES RHOADES DATE 11/3/23 ROUTE SR 231
 H.C. AUBLE WEATHER SUNNY COUNTY SENECA
 R.C. ASTON TEMP. 45° TOWNSHIP EDEN
 _____ NIESE SECTION 18
 DWG BY RHOADES PID 95780 T 1 N R 15 E

TYPE MONUMENT MAG/WASHER

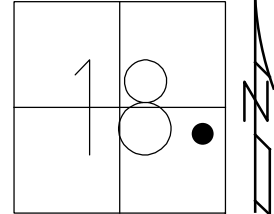
ON SURFACE - ~~BELOW~~ ON

OFFSET \odot PAVEMENT 6.7' LT : ~~RT~~
3.4' TO LT EDGE PAVEMENT

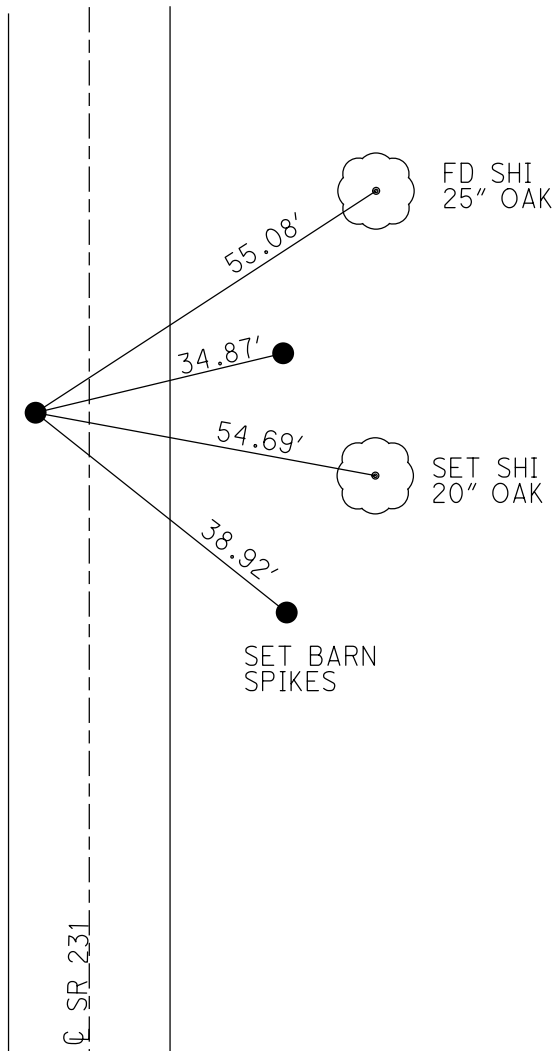
STATION: 179+63

HORIZ.DATUM: NAD83(2011) GEOID: NAVD88 2018

GRID: NORTHING: 501887.588 EASTING: 1783582.554



RECORD: P.I.
 $\Delta = 7^{\circ}08' RT$
 STA.179+13.51
 SET P.K./WASHER
 6/29/81, CRONIN
 FD P.K./WASHER
 6/19/97, MDB
 SET P.K./WASHER
 8/21/97, MDB
 FD P.K./WASHER
 8/16/04, MC
 FD P.K.NAIL
 REFA12
 3/27/19
 8/16/19, JFO
 FD P.K./WASHER
 3" DOWN
 REF12A
 4/19/23, TDN
 SET MAG/WASHER
 11/3/23, DSA



O.D.O.T. DISTRICT 2 SURVEY OFFICE (USE ONLY)

PERSONNEL

REFERENCE NO. 13

SHEET 16 OF 34

NOTES RHOADES

DATE 11/3/23

ROUTE SR 231

H.C. AUBLE

WEATHER SUNNY

COUNTY SENECA

R.C. ASTON

TEMP. 45°

TOWNSHIP EDEN

NIESE

DWG BY RHOADES

PID 95780

SECTION 18

T 1 N R 15 E

TYPE MONUMENT MAG/WASHER

ON SURFACE - ~~BELOW~~ ON

OFFSET \varnothing PAVEMENT 4.0' ~~LT~~ : RT

6.2' TO LT EDGE PAVEMENT

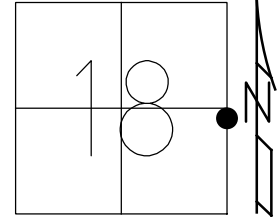
STATION: 185+32

HORZ.DATUM: NAD83(2011)

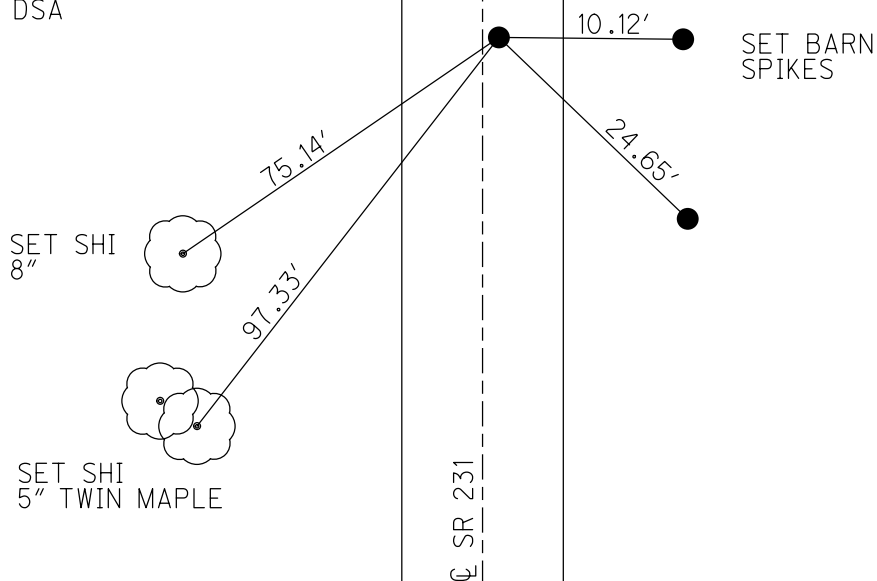
GEOID: NAVD88 2018

GRID: NORTHING: 502451.667

EASTING: 1783634.391



RECORD: P.I.
 STA.184+81.61
 $\Delta = 4^{\circ} 14'$
 FD SM.MINE SPIKE
 6/20/97, MC
 SET P.K./WASHER
 8/21/97, MB
 FD P.K./WASHER
 8/16/04, MC
 FD P.K./WASHER
 REF13
 3/27/19
 8/16/19, JFO
 2/10/23, JMR
 FD P.K.NAIL
 REF13
 4/19/23, TDN
 SET MAG/WASHER
 11/3/23, DSA



O.D.O.T. DISTRICT 2 SURVEY OFFICE (USE ONLY)

PERSONNEL

REFERENCE NO. 13 A

SHEET 17 OF 34

NOTES RHOADES

DATE 11/3/23

ROUTE SR 231

H.C. AUBLE

WEATHER SUNNY

COUNTY SENECA

R.C. ASTON

TEMP. 45°

TOWNSHIP EDEN

NIESE

SECTION 18

DWG BY RHOADES PID 107060

T 1 N R 15 E

TYPE MONUMENT MAG/WASHER

ON SURFACE - ~~BELOW~~ ON

OFFSET CL PAVEMENT 1.0' ~~LT~~ : RT

9.0' TO RT EDGE PAVEMENT

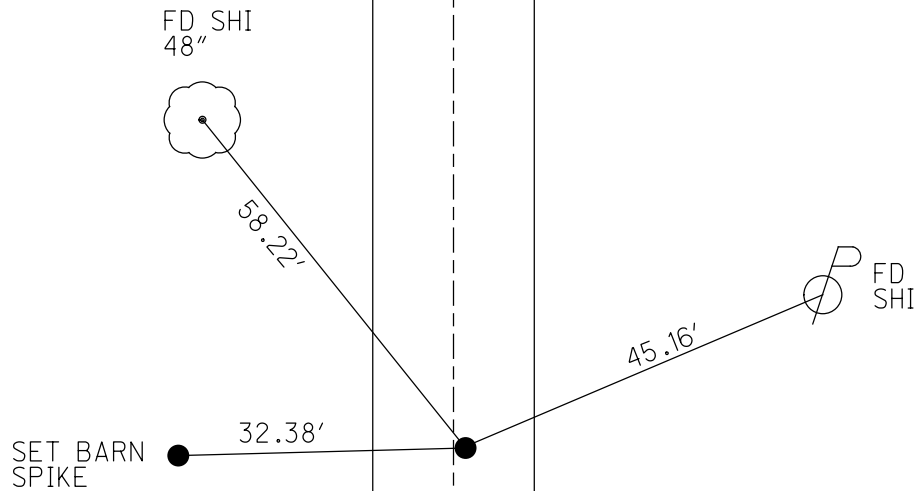
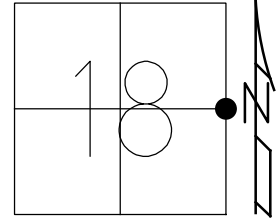
STATION: 206+53

HORZ.DATUM: NAD83(2011)

GEOID: NAVD88 2018

GRID: NORTHING: 504570.883

EASTING: 1783667.175



RECORD:
 ORIGIN UNKNOWN
 FD LG.R.R.SPIKE
 6/20/97, MC
 SET P.K./WASHER
 8/21/97, MB
 FD P.K./WASHER
 8/16/04, MC
 FD P.K./WASHER
 REFA13
 3/27/19
 8/16/19, JFO
 2/10/23, JMR
 FD P.K.NAIL
 4/19/23, TDN
 SET MAG/WASHER
 11/3/23, DSA

CL SR 231

O.D.O.T. DISTRICT 2 SURVEY OFFICE (USE ONLY)

PERSONNEL

REFERENCE NO. 14

SHEET 18 OF 34

NOTES RHOADES DATE 11/3/23
 H.C. AUBLE WEATHER SUNNY
 R.C. ASTON TEMP. 45°
NIESE

ROUTE SR 231
 COUNTY SENECA
 TOWNSHIP EDEN
 SECTION 18

DWG BY RHOADES PID 95780

T 1 N R 15 E

TYPE MONUMENT MAG/WASHER

ON SURFACE - ~~BELOW~~ ON

OFFSET CL PAVEMENT ON LT : RT

9.4' TO RT EDGE PAVEMENT

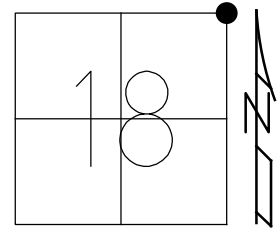
STATION: 211+82

HORZ.DATUM: NAD83(2011)

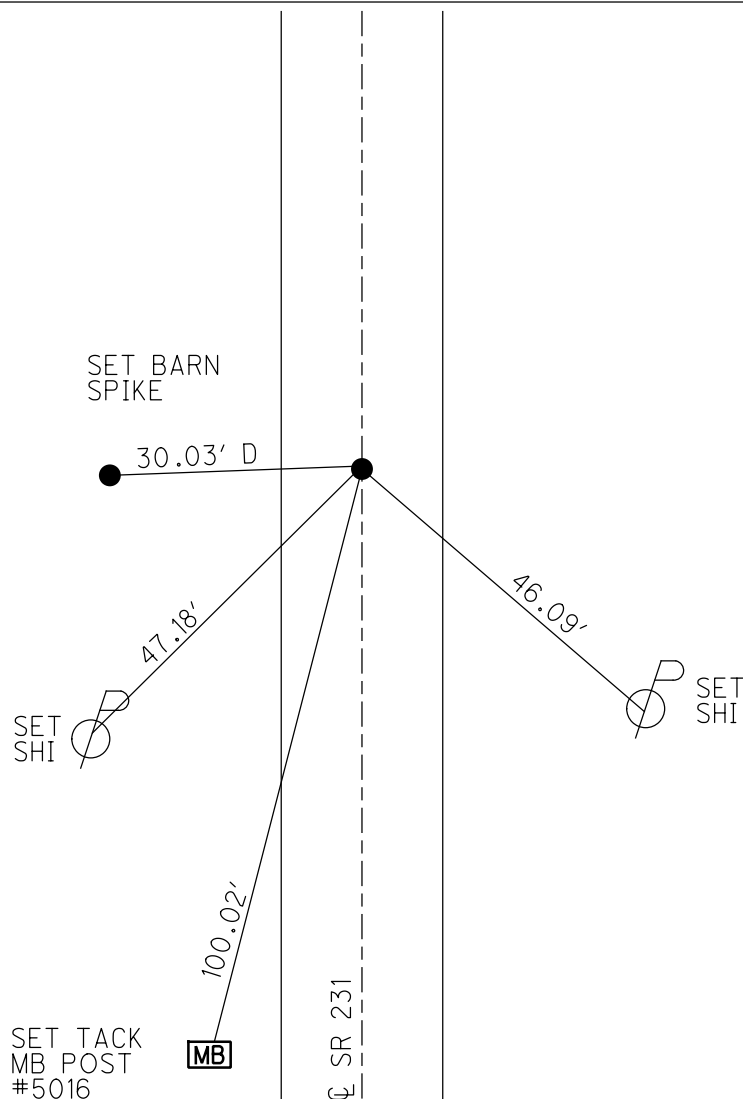
GEOID: NAVD88 2018

GRID: NORTHING: 505098.024

EASTING: 17823675.574



RECORD:
 STA. 211+37.31
 FD R.R.SPIKE
 5" DOWN
 3/13/75
 FD MINE SPIKE
 1 1/2" DOWN
 12/17/87, CRONIN
 FD LG.R.R.SPIKE
 2" DOWN
 6/19/92
 SET P.K./WASHER
 8/21/97, MB
 SET MAG/WASHER
 6/8/04, MC
 FD MAG/WASHER
 8/16/04, MC
 FD MAG/WASHER
 REF14
 3/27/19
 8/16/19, JFO
 FD MAG/WASHER
 REF14
 4/19/23, TDN
 SET MAG/WASHER
 11/3/23, DSA



O.D.O.T. DISTRICT 2 SURVEY OFFICE (USE ONLY)

PERSONNEL

REFERENCE NO. 14 A

SHEET 19 OF 34

NOTES RHOADES

DATE 11/3/23

ROUTE SR 231

H.C. AUBLE

WEATHER SUNNY

COUNTY SENECA

R.C. ASTON

TEMP. 45°

TOWNSHIP EDEN

NIESE

SECTION 7

DWG BY RHOADES

PID 95780

T 1 N R 15 E

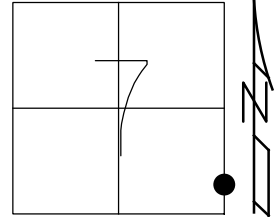
TYPE MONUMENT MAG/WASHER

ON SURFACE - ~~BELOW~~ ON

OFFSET ☉ PAVEMENT 1.2' ~~ET~~ : RT

8.1' TO RT EDGE PAVEMENT

STATION: 217+42



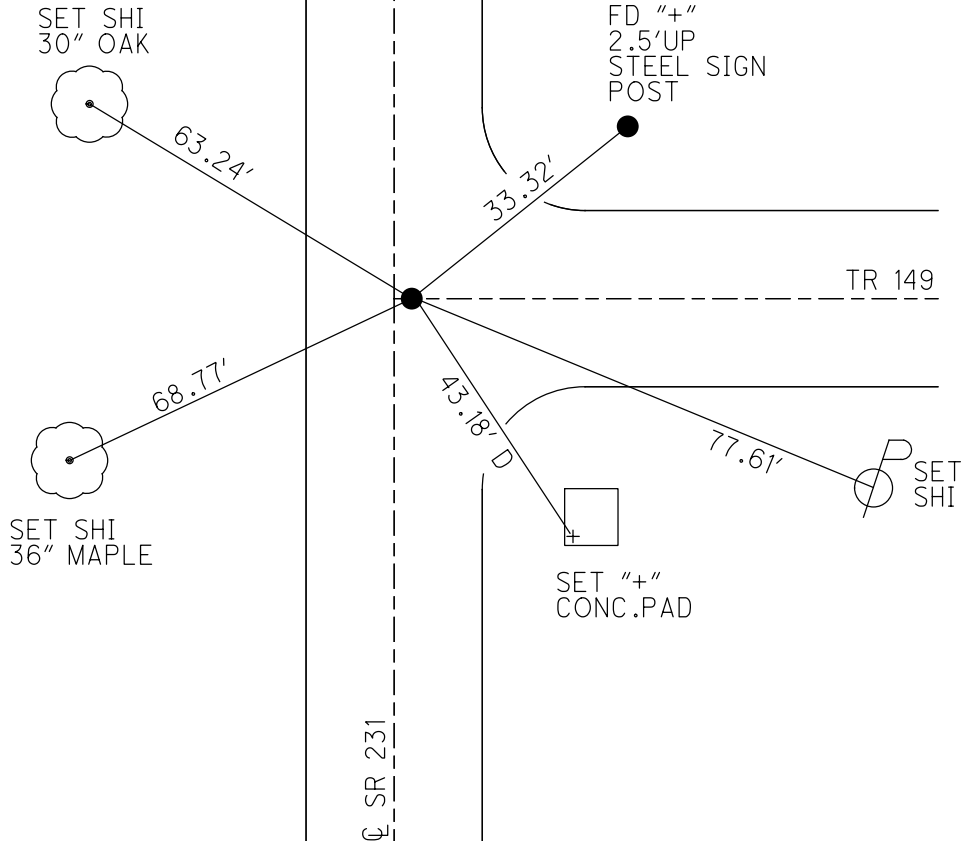
HORZ. DATUM: NAD83(2011)

GEOID: NAVD88 2018

GRID: NORTHING: 505647.091

EASTING: 1783686.010

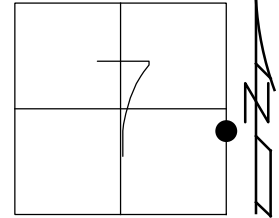
RECORD:
 FD LG.R.R.SPIKE
 2" DOWN
 6/20/97, MC
 SET P.K./WASHER
 8/21/97, MB
 SET MAG/WASHER
 6/9/04, MC
 FD MAG/WASHER
 8/16/04, MC
 FD MAG/WASHER
 REFA14
 3/27/19
 8/16/19, JFO
 FD MAG/WASHER
 REF14A
 4/19/23, TDN
 SET MAG/WASHER
 11/3/23, DSA



O.D.O.T. DISTRICT 2 SURVEY OFFICE (USE ONLY)

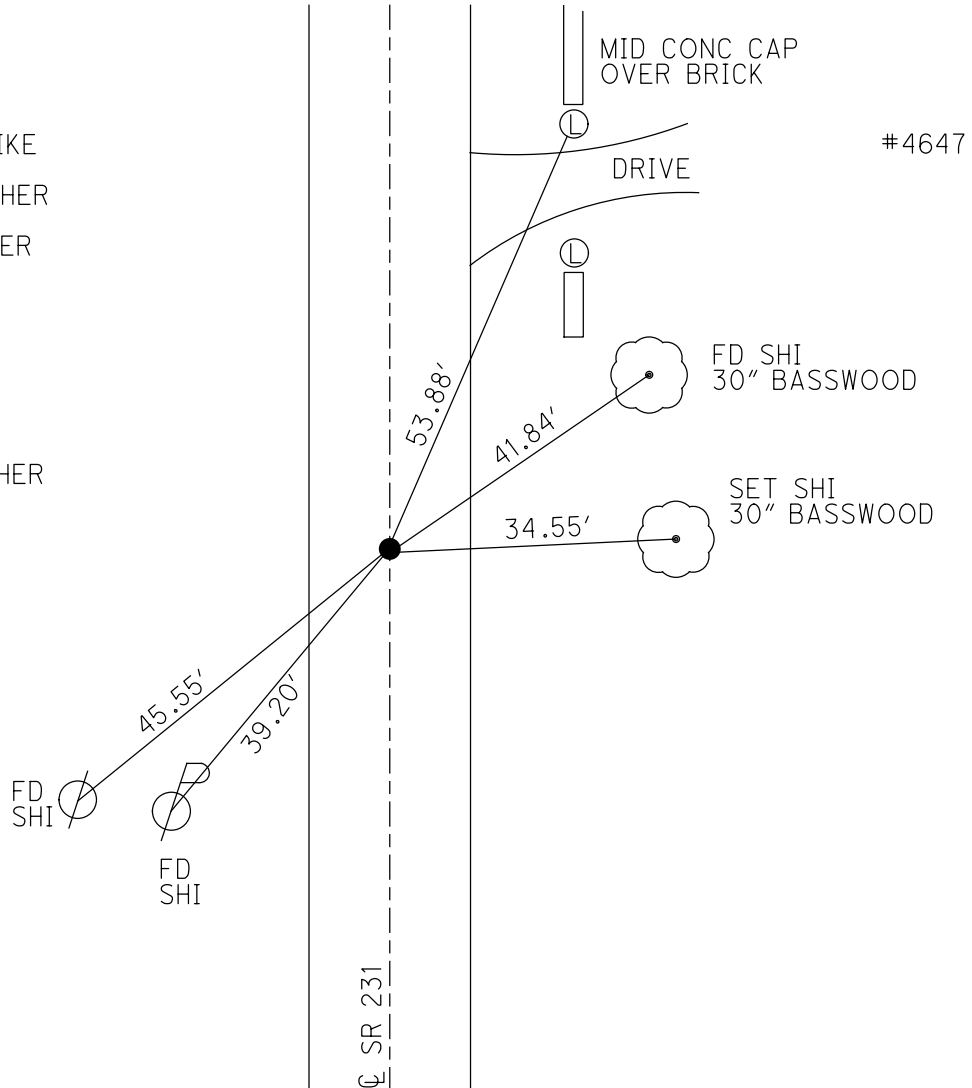
PERSONNEL _____ REFERENCE NO. 15 SHEET 20 OF 34
 NOTES RHOADES DATE 11/3/23 ROUTE SR 231
 H.C. AUBLE WEATHER SUNNY COUNTY SENECA
 R.C. ASTON TEMP. 45° TOWNSHIP EDEN
 _____ NIESE SECTION 7
 DWG BY RHOADES PID 95780 T 1 N R 15 E

TYPE MONUMENT MAG/WASHER
 ON SURFACE - ~~BELOW~~ _____ ON _____
 OFFSET C PAVEMENT 0.5' LT : ~~RT~~
9.7' TO LT EDGE PAVEMENT
 STATION: 229+43



HORIZ.DATUM: NAD83(2011) GEOID: NAVD88 2018
 GRID: NORTHING: 506841.367 EASTING: 1783710.120

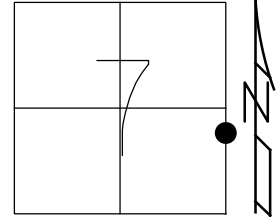
RECORD:
 STA.228+73.4
 FD SQ BOLT
 4 3/4" DOWN
 FD SM.R.R.SPIKE
 6/20/97, MC
 SET P.K./WASHER
 8/21/97, MB
 FD P.K./WASHER
 8/16/04, MC
 FD P.K.NAIL
 REF15
 3/27/19
 8/16/19, JFO
 FD P.K.SHANK
 REF15
 4/19/23, TDN
 SET MAG/WASHER
 11/3/23, DSA



O.D.O.T. DISTRICT 2 SURVEY OFFICE (USE ONLY)

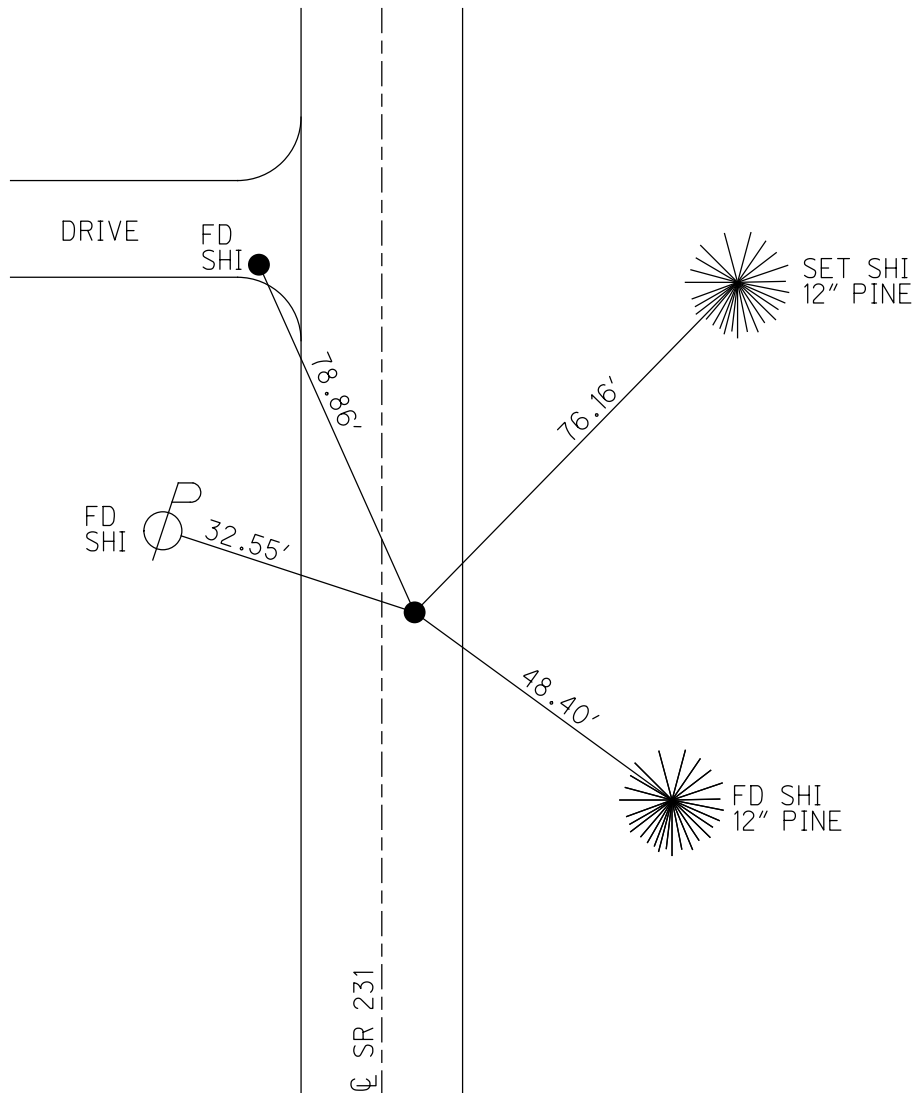
PERSONNEL _____ REFERENCE NO. 16 SHEET 21 OF 34
 NOTES RHOADES DATE 11/3/23 ROUTE SR 231
 H.C. AUBLE WEATHER SUNNY COUNTY SENECA
 R.C. ASTON TEMP. 45° TOWNSHIP EDEN
 NIESE SECTION 7
 DWG BY RHOADES PID 95780 T 1 N R 15 E

TYPE MONUMENT MAG/WASHER
 ON SURFACE - ~~BELOW~~ ON
 OFFSET \varnothing PAVEMENT 4.0' ~~LT~~ : RT
5.8' TO RT EDGE PAVEMENT
 STATION: 234+52



HORZ.DATUM: NAD83(2011) GEOID: NAVD88 2018
 GRID: NORTHING: 507350.481 EASTING: 1783720.674

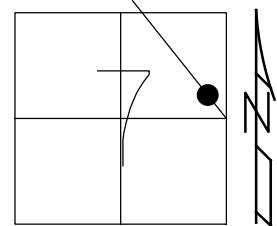
RECORD:
 STA.233+82.50
 FD R.R.SPIKE
 ON \varnothing R/W
 4 1/2" DOWN
 6/20/97, MC
 SET P.K./WASHER
 8/21/97, MB
 FD P.K./WASHER
 8/16/04, MC
 FD P.K.SHANK
 REF16
 3/27/19
 8/16/19, JFO
 FD P.K.SHANK
 4/19/23, TDN
 SET MAG/WASHER
 11/3/23, DSA



O.D.O.T. DISTRICT 2 SURVEY OFFICE (USE ONLY)

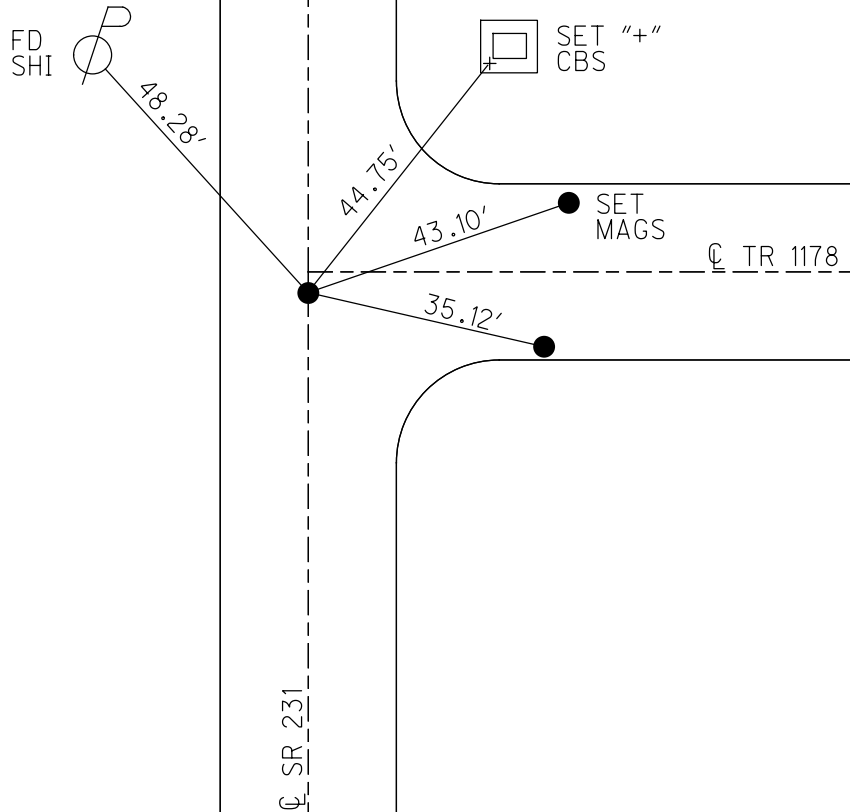
PERSONNEL	REFERENCE NO. <u>16 A</u>	SHEET <u>22</u> OF <u>34</u>
NOTES <u>RHOADES</u>	DATE <u>11/6/23</u>	ROUTE <u>SR 231</u>
H.C. <u>AUBLE</u>	WEATHER <u>SUNNY</u>	COUNTY <u>SENECA</u>
R.C. <u>ASTON</u>	TEMP. <u>48°</u>	TOWNSHIP <u>EDEN</u>
<u>NIESE</u>		SECTION <u>7</u>
DWG BY <u>RHOADES</u>	PID <u>95780</u>	T <u>1</u> N R <u>15</u> E

TYPE MONUMENT MAG/WASHER
 ON SURFACE - ~~BELOW~~ ON
 OFFSET ☉ PAVEMENT ON LT : RT
9.2' TO LT EDGE PAVEMENT
 STATION: 239+64



HORZ. DATUM: NAD83(2011) GEOID: NAVD88 2018
 GRID: NORTHING: 507844.714 EASTING: 1783581.359

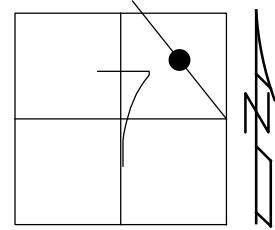
RECORD:
 FD LG.R.R.SPIKE
 2" DOWN
 6/20/97, MB
 SET P.K./WASHER
 8/21/97, MB
 SET MAG/WASHER
 6/9/04
 FD MAG/WASHER
 8/16/04, MC
 FD MAG/WASHER
 REFA16
 3/27/19
 8/16/19, JFO
 FD MAG/WASHER
 REF16A
 4/19/23, TDN
 SET MAG/WASHER
 11/6/23, DSA



O.D.O.T. DISTRICT 2 SURVEY OFFICE (USE ONLY)

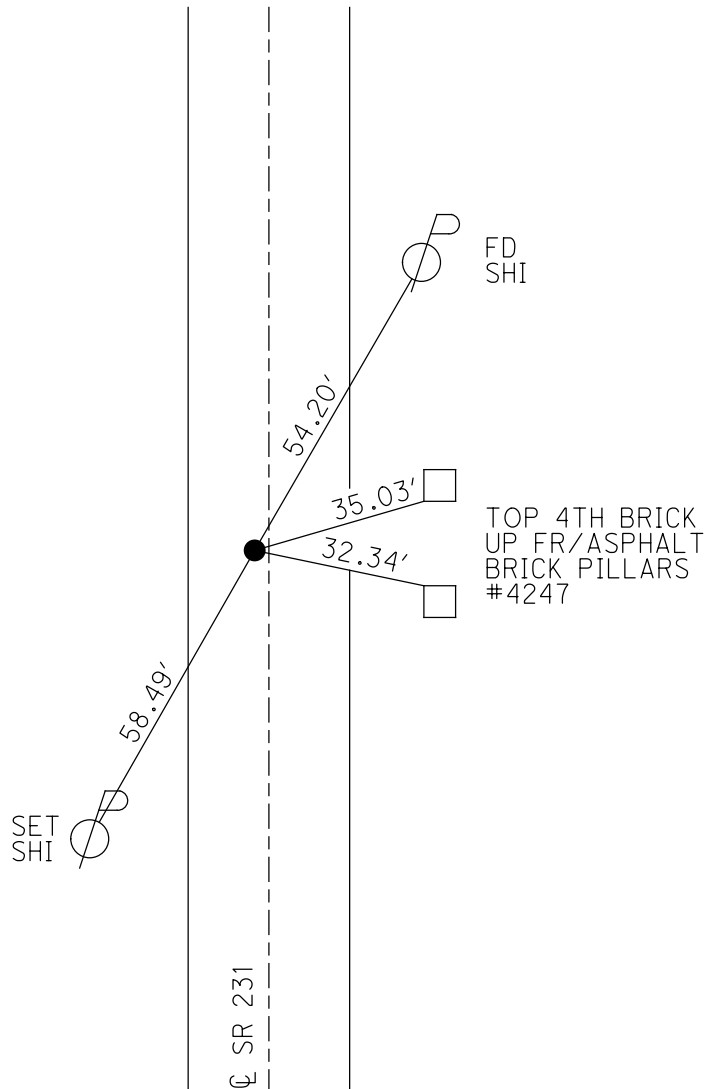
PERSONNEL _____ REFERENCE NO. 17 SHEET 23 OF 34
 NOTES RHOADES DATE 11/6/23 ROUTE SR 231
 H.C. AUBLE WEATHER SUNNY COUNTY SENECA
 R.C. ASTON TEMP. 48° TOWNSHIP EDEN
 _____ NIESE SECTION 7
 DWG BY RHOADES PID 95780 T 1 N R 15 E

TYPE MONUMENT MAG/WASHER
 ON SURFACE - ~~BELOW~~ ON
 OFFSET C PAVEMENT 1.2' LT : ~~RT~~
8.2' TO LT EDGE PAVEMENT
 STATION: 252+80



HORZ. DATUM: NAD83(2011) GEOID: NAVD88 2018
 GRID: NORTHING: 509098.900 EASTING: 1783226.213

RECORD:
 STA. 252+00
 FD R.R. SPIKE
 3 1/4" DOWN
 FD LG. R.R. SPIKE
 6" DOWN
 6/20/97, MC
 SET P.K./WASHER
 9/11/97, MRC
 SET MAG/WASHER
 6/9/04, MC
 FD MAG/WASHER
 8/16/04, MC
 FD MAG/WASHER
 REF17
 3/27/19
 8/16/19, JFO
 FD MAG/WASHER
 REF17
 4/20/23, TDN
 SET MAG/WASHER
 11/6/23, DSA



O.D.O.T. DISTRICT 2 SURVEY OFFICE (USE ONLY)

PERSONNEL

REFERENCE NO. 19

SHEET 24 OF 34

NOTES RHOADES

DATE 11/2/23

ROUTE SR 231

H.C. AUBLE

WEATHER SUNNY

COUNTY SENECA

R.C. MILLER

TEMP. 51°

TOWNSHIP EDEN

SECTION 6

DWG BY RHOADES

PID 95780

T 1 N R 15 E

TYPE MONUMENT MAG/WASHER

ON SURFACE - ~~BELOW~~ ON

OFFSET C PAVEMENT 1.0' ~~RT~~ : RT

9.8' TO RT EDGE PAVEMENT

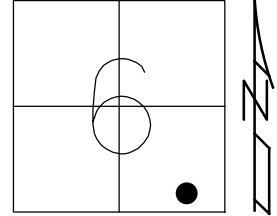
STATION: 268+52

HORIZ.DATUM: NAD83(2011)

GEOID: NAVD88 2018

GRID: NORTHING: 510609.522

EASTING: 1782804.999



RECORD:

STA. 267+69.5

FD R.R.SPIKE

W/DIMPLE

FD BOLT SPIKE

6/20/97, MC

SET P.K./WASHER

9/11/97, MRC

FD P.K./WASHER

8/16/04, MC

FD P.K./WASHER

REF19

3/27/19

8/16/19, JFO

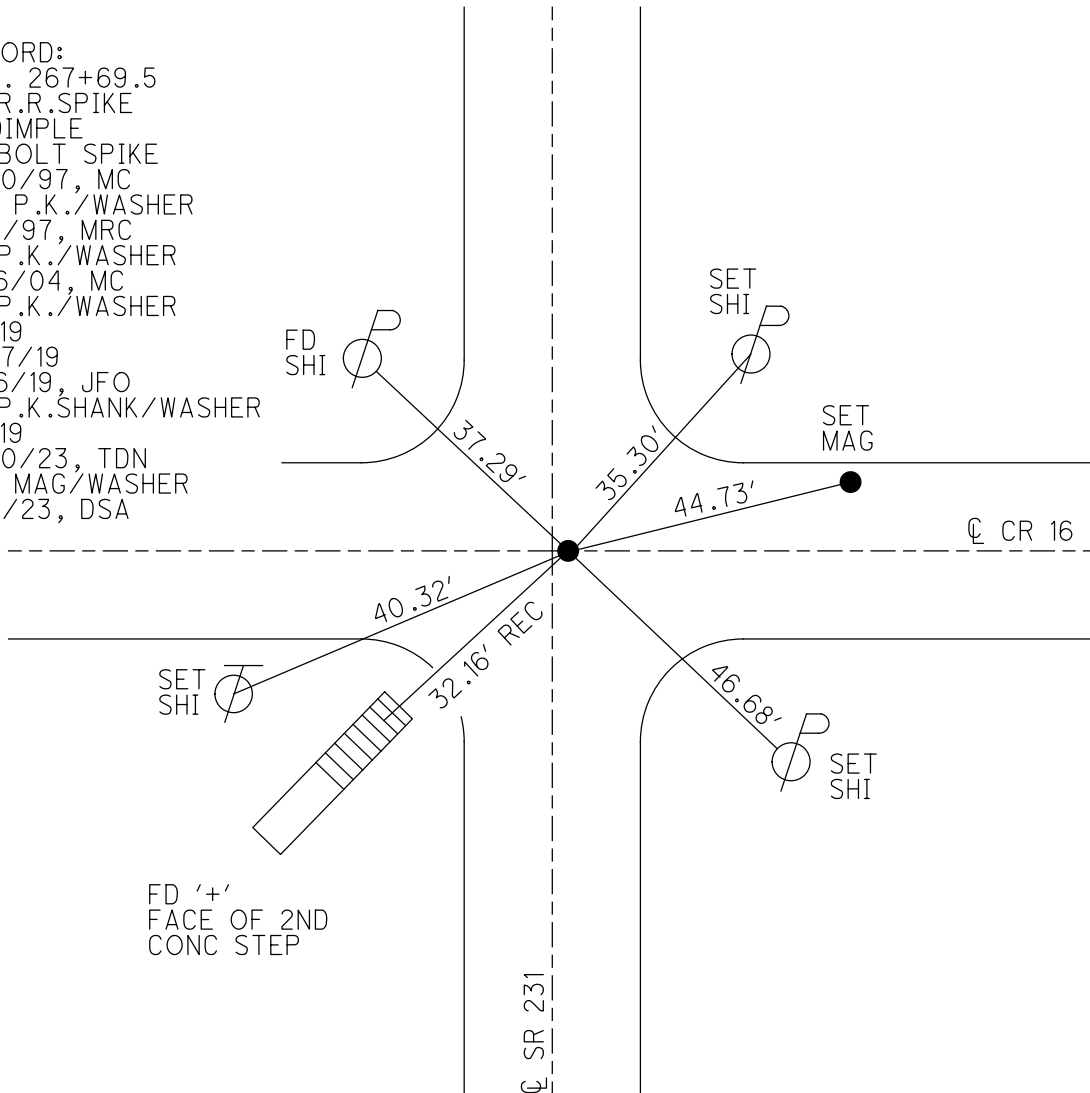
FD P.K.SHANK/WASHER

REF19

4/20/23, TDN

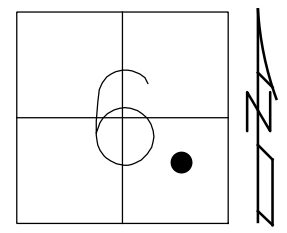
SET MAG/WASHER

11/2/23, DSA

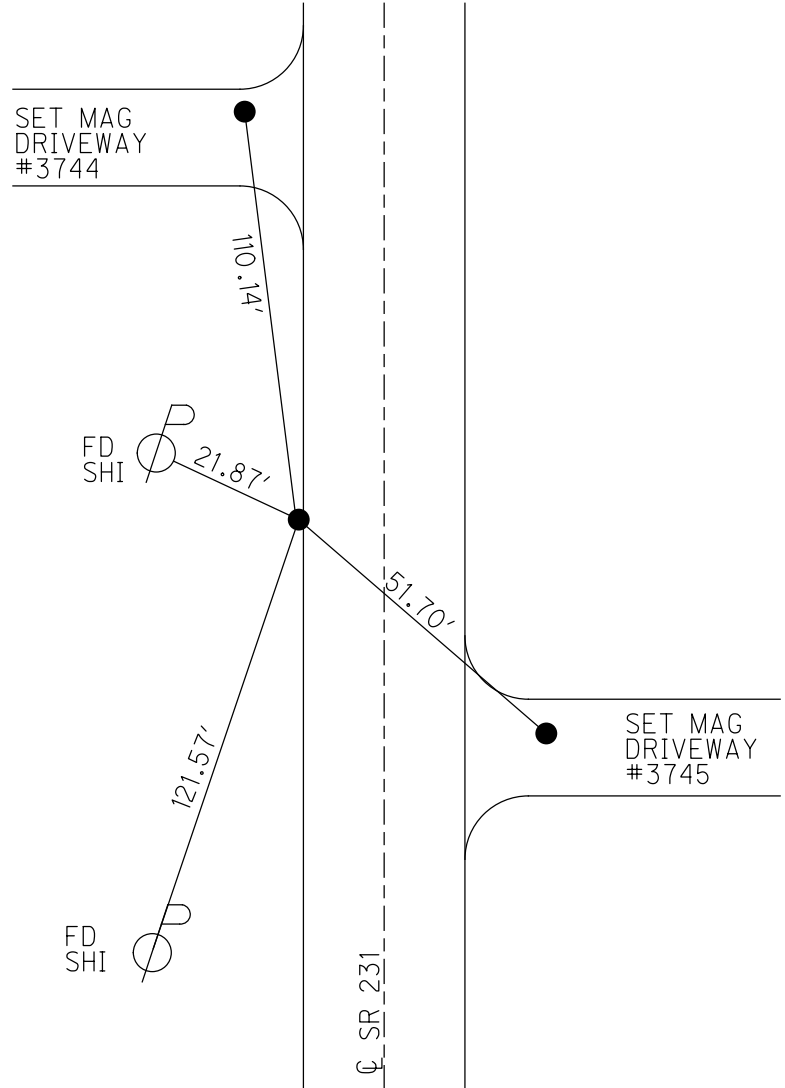


O.D.O.T. DISTRICT 2 SURVEY OFFICE (USE ONLY)

PERSONNEL	REFERENCE NO. <u>20</u>	SHEET <u>25</u> OF <u>34</u>
NOTES	RHOADES	DATE <u>11/2/23</u>
H.C.	AUBLE	WEATHER <u>SUNNY</u>
R.C.	MILLER	TEMP. <u>51°</u>
DWG BY <u>RHOADES</u>	PID <u>95780</u>	ROUTE <u>SR 231</u>
TYPE MONUMENT <u>MAG/WASHER</u>		COUNTY <u>SENECA</u>
ON SURFACE - BELOW <u>ON</u>		TOWNSHIP <u>EDEN</u>
OFFSET <u>☐</u> PAVEMENT <u>10'</u> LT : RT		SECTION <u>6</u>
<u>ON</u> TO LT EDGE PAVEMENT		T <u>1</u> N R <u>15</u> E
STATION: <u>280+24</u>		
HORIZ.DATUM: <u>NAD83(2011)</u>	GEOID: <u>NAVD88 2018</u>	
GRID: NORTHING: <u>511737.025</u>	EASTING: <u>1782483.480</u>	



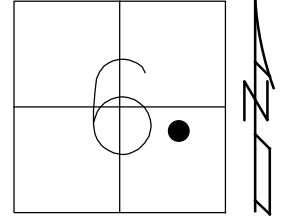
- RECORD:
 STA.279+42
 FD BOLT
 ON ☐ R/W
 1" DOWN
 FD SM.R.R.SPIKE
 3" DOWN
 6/20/97, MRC
 SET P.K./WASHER
 9/11/97, MRC
 FD P.K./WASHER
 8/16/04, MC
 FD P.K./WASHER
 REF20
 4/25/19
 8/16/19, JFO
 FD P.K./WASHER
 REF20
 4/20/23, TDN
 SET MAG/WASHER
 11/2/23, DSA



O.D.O.T. DISTRICT 2 SURVEY OFFICE (USE ONLY)

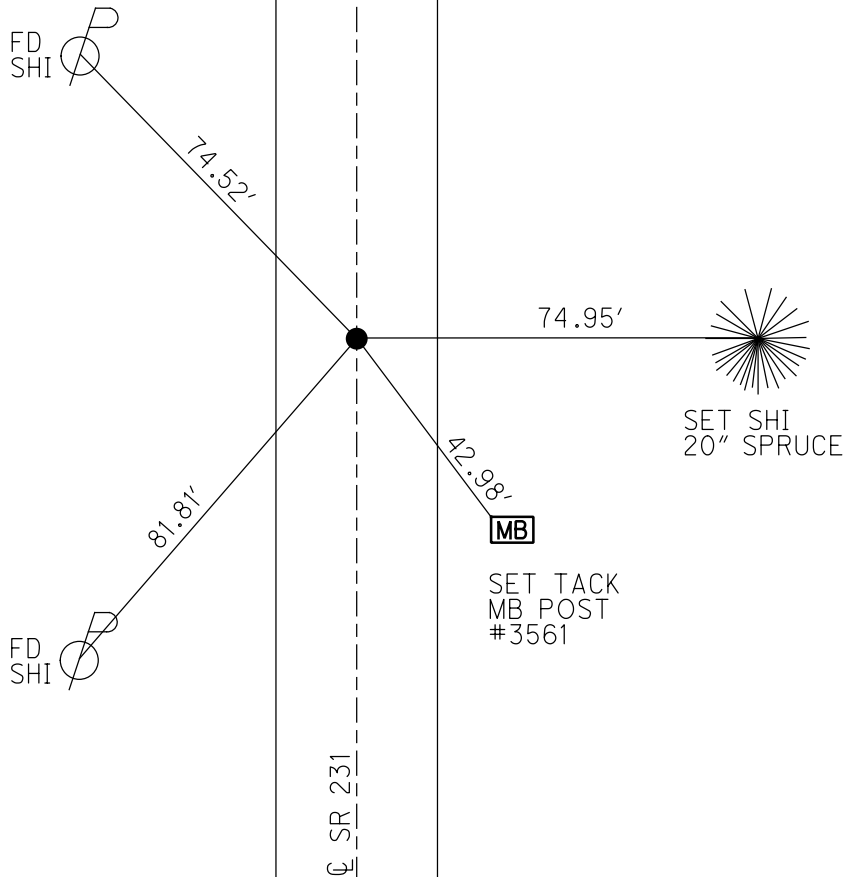
PERSONNEL _____ REFERENCE NO. 21 SHEET 26 OF 34
 NOTES RHOADES DATE 11/2/23 ROUTE SR 231
 H.C. AUBLE WEATHER SUNNY COUNTY SENECA
 R.C. MILLER TEMP. 51° TOWNSHIP EDEN
 DWG BY RHOADES PID 95780 SECTION 6
 T 1 N R 15 E

TYPE MONUMENT MAG/WASHER
 ON SURFACE - ~~BELOW~~ ON _____
 OFFSET C PAVEMENT 0.4' LT : ~~RT~~
9.7' TO LT EDGE PAVEMENT
 STATION: 290+96



HORZ. DATUM: NAD83(2011) GEOID: NAVD88 2018
 GRID: NORTHING: 512807.525 EASTING: 1782465.922

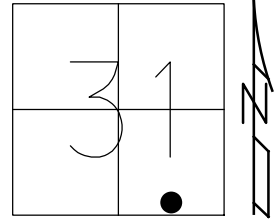
RECORD:
 STA. 290+14.6
 FD R.R. SPIKE
 ON C R/W
 2 1/4" DOWN
 FD R.R. SPIKE
 5" DOWN
 6/20/97, MRC
 SET P.K./WASHER
 9/11/97, MRC
 FD P.K./WASHER
 8/16/04, MC
 FD P.K./WASHER
 REF21
 4/25/19
 8/16/19, JFO
 FD P.K./WASHER
 REF21
 4/20/23, TDN
 SET MAG/WASHER
 11/2/23, DSA



O.D.O.T. DISTRICT 2 SURVEY OFFICE (USE ONLY)

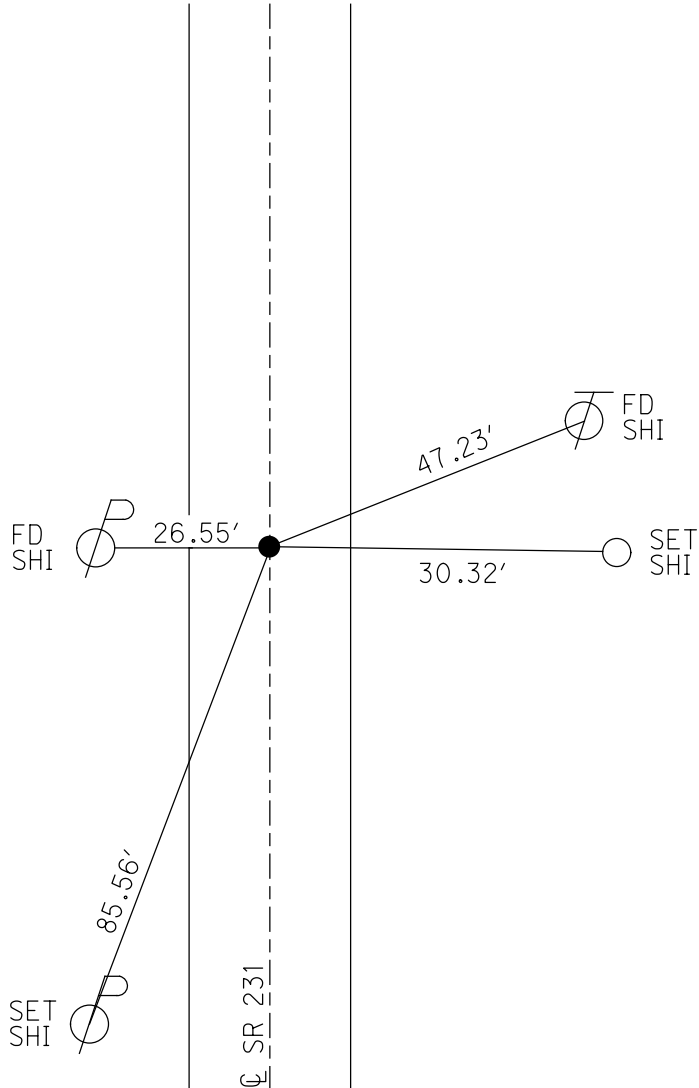
PERSONNEL _____ REFERENCE NO. 22 SHEET 27 OF 34
 NOTES RHOADES DATE 11/2/23 ROUTE SR 231
 H.C. AUBLE WEATHER SUNNY COUNTY SENECA
 R.C. MILLER TEMP. 52° TOWNSHIP CLINTON
 DWG BY RHOADES PID 95780 SECTION 31
 T 2 N R 15 E

TYPE MONUMENT MAG/WASHER
 ON SURFACE - ~~BELOW~~ ON
 OFFSET Q PAVEMENT ON LT : RT
8.9' TO RT EDGE PAVEMENT
 STATION: 320+98



HORZ.DATUM: NAD83(2011) GEOID: NAVD88 2018
 GRID: NORTHING: 515796.688 EASTING: 1782493.314

RECORD:
 STA.320+04.8
 FD BOLT
 ON Q R/W
 5 1/4" DOWN
 FD LG.R.R.SPIKE
 8" DOWN
 6/24/97, MRC
 SET P.K./WASHER
 9/11/97, MRC
 FD P.K./WASHER
 8/16/04, MC
 FD P.K.SHANK/WASHER
 1" DOWN
 REF22
 4/25/19
 8/16/19, JFO
 FD P.K.SHANKS
 AGAINST EACH OTHER
 1" DOWN
 PULLED TO MIDDLE
 REF22
 4/20/23, TDN
 SET MAG/WASHER
 11/2/23, DSA

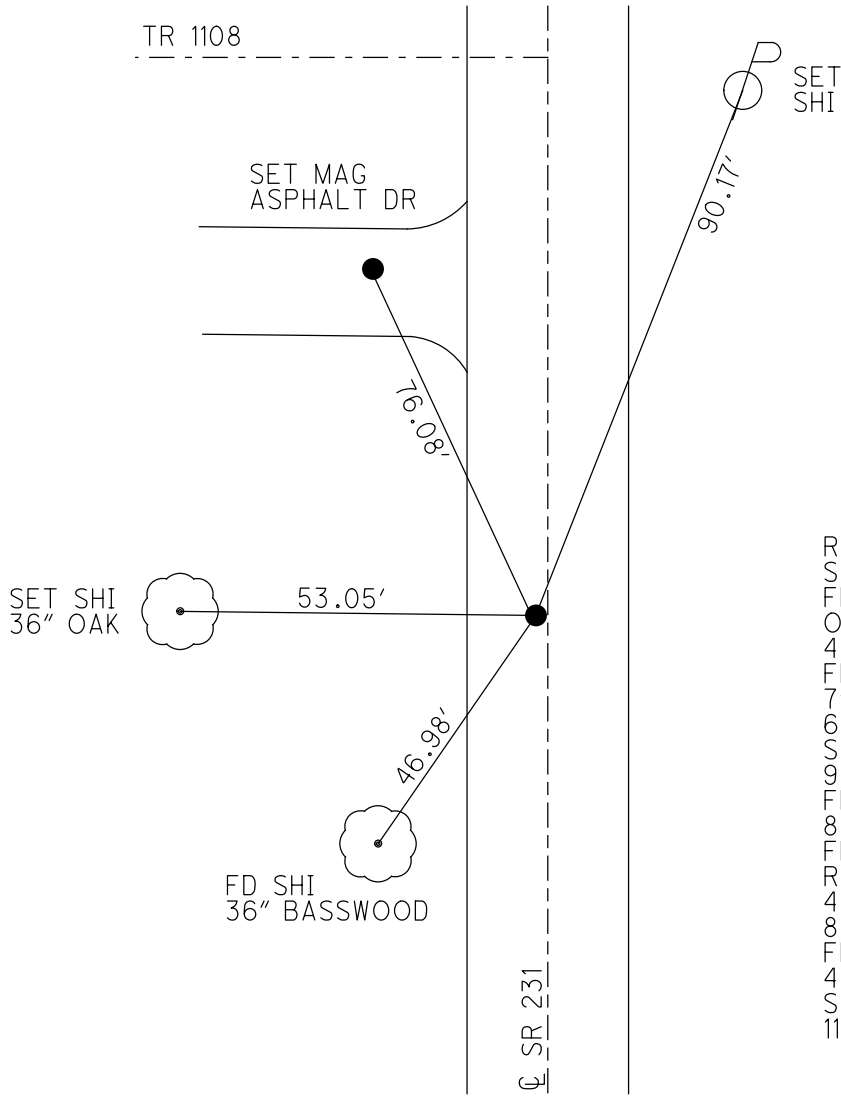
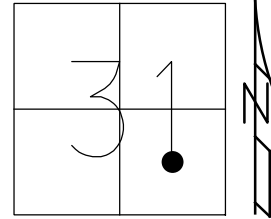


O.D.O.T. DISTRICT 2 SURVEY OFFICE (USE ONLY)

PERSONNEL _____ REFERENCE NO. 23 SHEET 28 OF 34
 NOTES RHOADES DATE 11/2/23 ROUTE SR 231
 H.C. AUBLE WEATHER SUNNY COUNTY SENECA
 R.C. MILLER TEMP. 52° TOWNSHIP CLINTON
 DWG BY RHOADES PID 95780 SECTION 31
 T 2 N R 15 E

TYPE MONUMENT MAG/WASHER
 ON SURFACE - ~~BELOW~~ ON _____
 OFFSET $\text{\textcircled{C}}$ PAVEMENT 1.0' LT : ~~RT~~
8.9' TO LT EDGE PAVEMENT
 STATION: 328+00

HORZ.DATUM: NAD83(2011) GEOID: NAVD88 2018
 GRID: NORTHING: 516497.503 EASTING: 1782478.156

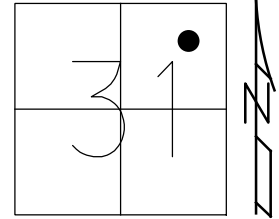


RECORD:
 STA. 327+06.1
 FD R.R.SPIKE
 ON $\text{\textcircled{C}}$ R/W
 4" DOWN
 FD LG.R.R.SPIKE
 7" DOWN
 6/27/97, MRC
 SET P.K./WASHER
 9/11/97, MRC
 FD P.K./WASHER
 8/17/04, MC
 FD P.K./WASHER
 REF23
 4/25/19
 8/16/19, JFO
 FD P.K./WASHER
 4/20/23, TDN
 SET MAG/WASHER
 11/2/23, DSA

O.D.O.T. DISTRICT 2 SURVEY OFFICE (USE ONLY)

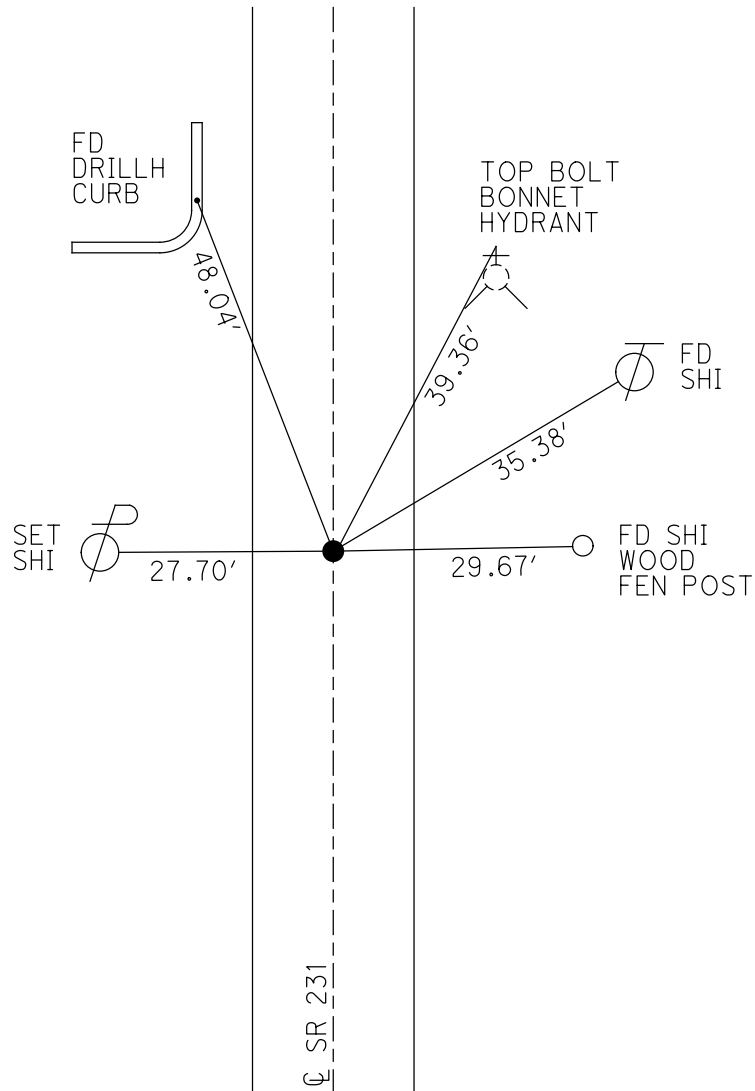
PERSONNEL _____ REFERENCE NO. 24 SHEET 29 OF 34
 NOTES RHOADES DATE 11/2/23 ROUTE SR 231
 H.C. AUBLE WEATHER SUNNY COUNTY SENECA
 R.C. MILLER TEMP. 39° TOWNSHIP CLINTON
 DWG BY RHOADES PID 95780 SECTION 31
 T 2 N R 15 E

TYPE MONUMENT MAG/WASHER
 ON SURFACE - ~~BELOW~~ ON
 OFFSET \varnothing PAVEMENT ON LT : RT
9.1' TO LT EDGE PAVEMENT
 STATION: 347+54



HORZ. DATUM: NAD83(2011) GEOID: NAVD88 2018
 GRID: NORTHING: 518457.130 EASTING: 1782491.137

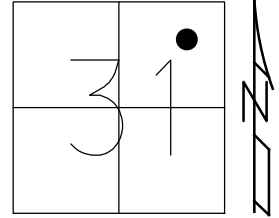
RECORD:
 FD BOAT SPIKE
 3" DOWN
 SET MAG/WASHER
 6/22/04, MC
 FD P.K./WASHER
 REF24
 4/25/19
 8/16/19, JFO
 FD P.K. SHANK
 REF24
 4/20/23, TDN
 SET MAG/WASHER
 11/2/23, DSA



O.D.O.T. DISTRICT 2 SURVEY OFFICE (USE ONLY)

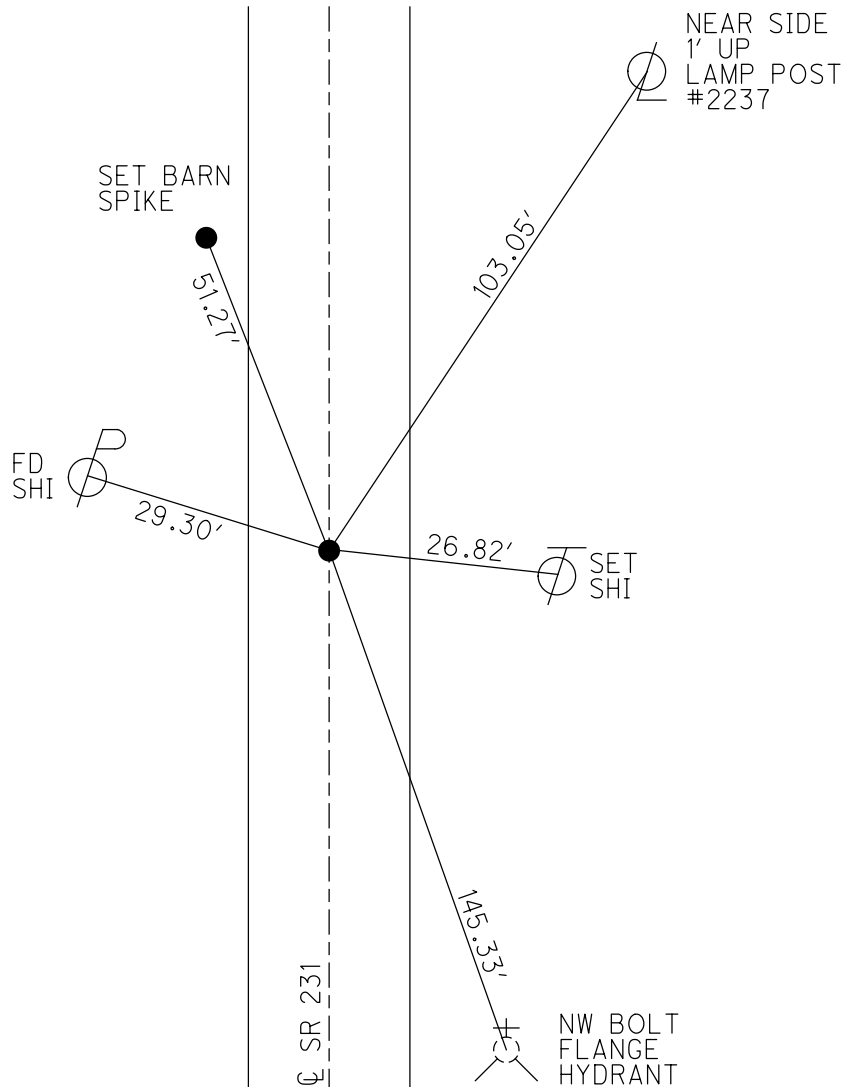
PERSONNEL _____ REFERENCE NO. 25 SHEET 30 OF 34
 NOTES RHOADES DATE 11/2/23 ROUTE SR 231
 H.C. AUBLE WEATHER CLOUDY COUNTY SENECA
 R.C. MILLER TEMP. 39° TOWNSHIP CLINTON
 DWG BY RHOADES PID 95780 SECTION 31
 T 2 N R 15 E

TYPE MONUMENT MAG/WASHER
 ON SURFACE - ~~BELOW~~ ON _____
 OFFSET \varnothing PAVEMENT 0.5' ~~LT~~ : RT
10.1' TO RT EDGE PAVEMENT
 STATION: 360+94



HORZ. DATUM: NAD83(2011) GEOID: NAVD88 2018
 GRID: NORTHING: 519792.671 EASTING: 1782502.786

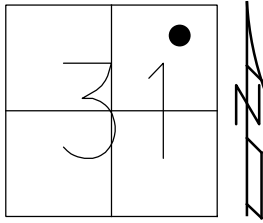
RECORD:
 FD P.K.NAIL
 4" DOWN
 SET MAG/WASHER
 6/22/04, MC
 FD P.K./WASHER
 REF25
 4/25/19
 8/16/19, JFO
 FD P.K.NAIL
 REF25
 4/20/23, TDN
 SET MAG/WASHER
 11/2/23, DSA



O.D.O.T. DISTRICT 2 SURVEY OFFICE (USE ONLY)

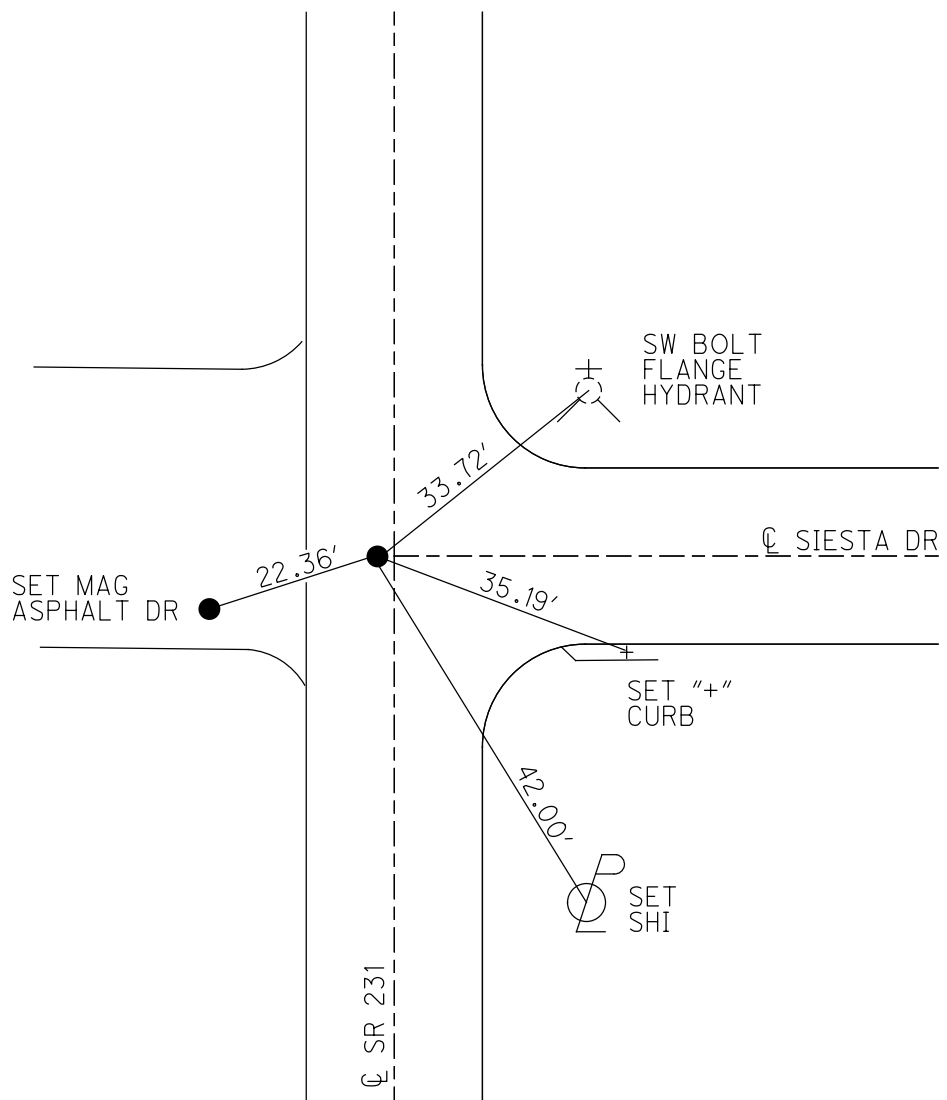
PERSONNEL _____ REFERENCE NO. 26 SHEET 31 OF 34
 NOTES RHOADES DATE 11/2/23 ROUTE SR 231
 H.C. AUBLE WEATHER CLOUDY COUNTY SENECA
 R.C. MILLER TEMP. 39° TOWNSHIP CLINTON
 DWG BY RHOADES PID 95780 SECTION 31
 T 2 N R 15 E

TYPE MONUMENT MAG/WASHER
 ON SURFACE - ~~BELOW~~ ON
 OFFSET 0.5 LT : ~~RT~~
9.2' TO LT EDGE PAVEMENT
 STATION: 365+32



HORZ.DATUM: NAD83(2011) GEOID: NAVD88 2018
 GRID: NORTHING: 520231.356 EASTING: 1782506.005

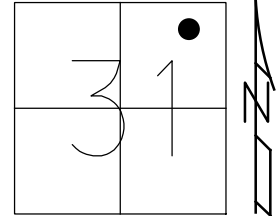
RECORD:
 FD HINGE NAIL
 5" DOWN
 SET MAG/WASHER
 6/22/04, MC
 FD MAG NAIL
 REF26
 4/25/19
 8/16/19, JFO
 7/2/21, DSA
 FD MAG NAIL
 REF26
 4/20/23, TDN
 SET MAG/WASHER
 11/2/23, DSA



O.D.O.T. DISTRICT 2 SURVEY OFFICE (USE ONLY)

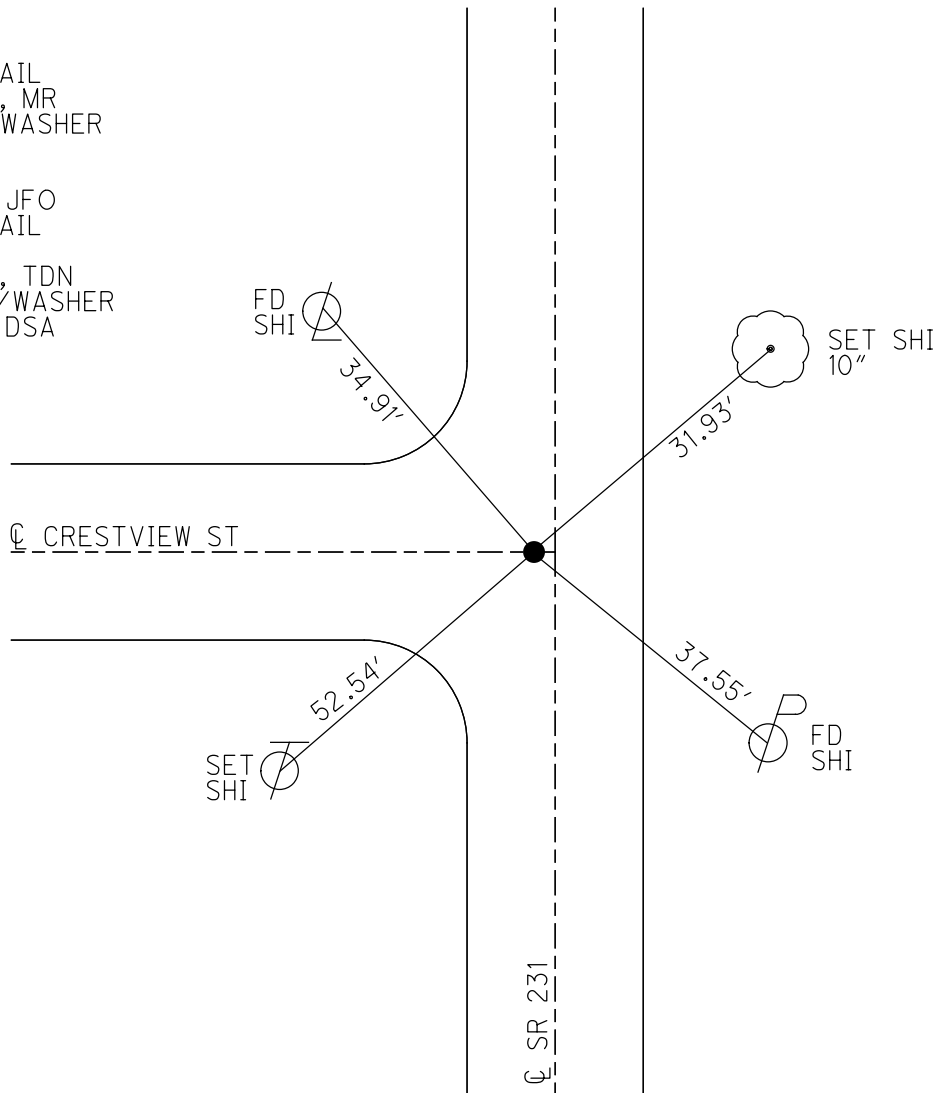
PERSONNEL _____ REFERENCE NO. 27 SHEET 32 OF 34
 NOTES RHOADES DATE 11/2/23 ROUTE SR 231
 H.C. AUBLE WEATHER CLOUDY COUNTY SENECA
 R.C. MILLER TEMP. 39° TOWNSHIP CLINTON
 DWG BY RHOADES PID 95780 SECTION 31
 T 2 N R 15 E

TYPE MONUMENT MAG/WASHER
 ON SURFACE - ~~BELOW~~ ON
 OFFSET \varnothing PAVEMENT ON LT : RT
11.2' TO RT EDGE PAVEMENT
 STATION: 368+92



HORZ.DATUM: NAD83(2011) GEOID: NAVD88 2018
 GRID: NORTHING: 520592.556 EASTING: 1782509.700

RECORD:
 FD P.K.NAIL
 6/22/04, MR
 FD P.K./WASHER
 REF27
 4/25/19
 8/16/19, JFO
 FD P.K.NAIL
 REF27
 4/20/23, TDN
 SET MAG/WASHER
 11/2/23, DSA



O.D.O.T. DISTRICT 2 SURVEY OFFICE (USE ONLY)

PERSONNEL

REFERENCE NO. 28

SHEET 33 OF 34

NOTES BARNHISEL DATE 6/22/04
H.C. CANTERBURY WEATHER SUN
R.C. ADKINS TEMP. 75°

ROUTE SR 231
COUNTY SENECA
TOWNSHIP CLINTON
SECTION 31
T 2 N R 15 E

DWG BY NIESE PID -

TYPE MONUMENT P.K. NAIL

ON SURFACE - BELOW --

OFFSET \odot PAVEMENT -- LT : RT

-- TO -- EDGE PAVEMENT

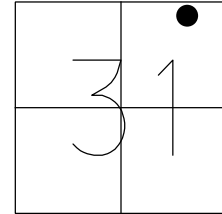
STATION: 371+19

HORZ.DATUM: --

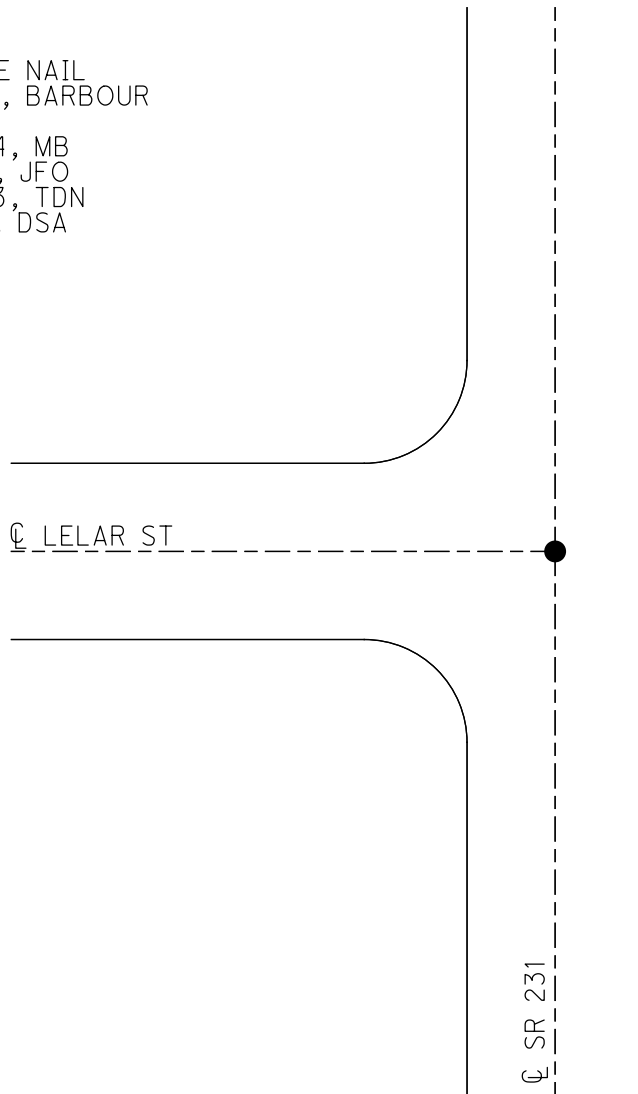
GEOID: --

GRID: NORTHING: --

EASTING: --



RECORD:
FD HINGE NAIL
4/17/69, BARBOUR
D.N.F
6/22/04, MB
4-25-19, JFO
4/20/23, TDN
11/2/23, DSA



O.D.O.T. DISTRICT 2 SURVEY OFFICE (USE ONLY)

PERSONNEL

REFERENCE NO. 29

SHEET 34 OF 34

NOTES AUBLE

DATE 12/5/23

ROUTE SR 231

H.C. AUBLE

WEATHER CLOUDY

COUNTY SENECA

R.C. NIESE

TEMP. 37°

TOWNSHIP CLINTON

ASTON

SECTION 31

DWG BY RHOADES PID 95780

T 2 N R 15 E

TYPE MONUMENT ROUND MONBOX W/ 2 R.R.SPIKES

ON SURFACE - ~~BELOW~~ ON

OFFSET Q PAVEMENT 2.1' LT : ~~RT~~

8.0' TO LT EDGE PAVEMENT

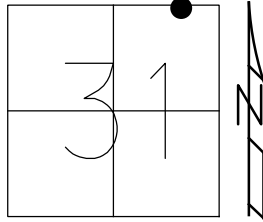
STATION: 374+27

HORZ.DATUM: NAD83(2011)

GEOID: NAVD88 2018

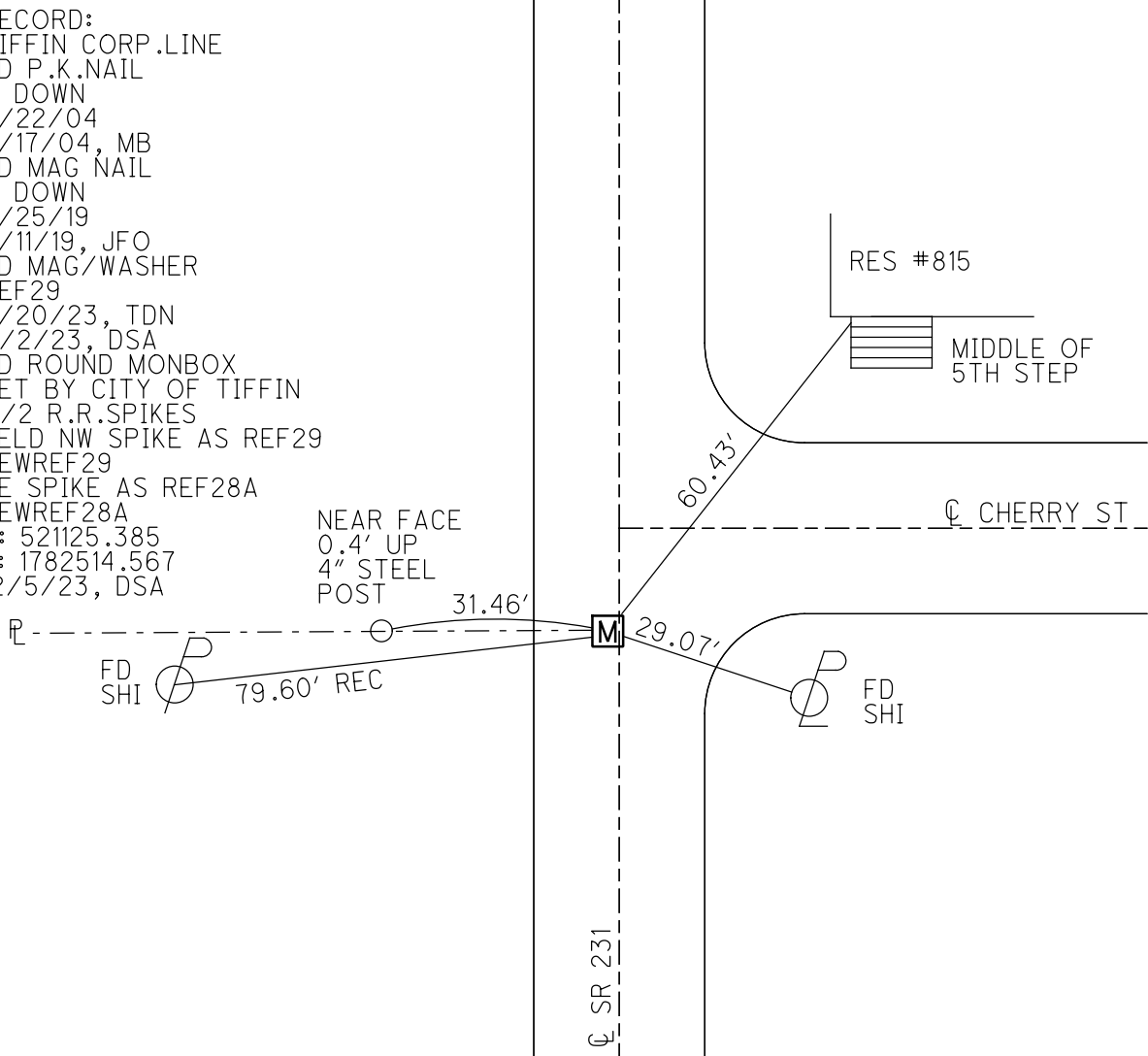
GRID: NORTHING: 521125.522

EASTING: 1782514.404



RECORD:
 TIFFIN CORP .LINE
 FD P.K.NAIL
 1" DOWN
 6/22/04
 8/17/04, MB
 FD MAG NAIL
 1" DOWN
 4/25/19
 8/11/19, JFO
 FD MAG/WASHER
 REF29
 4/20/23, TDN
 11/2/23, DSA
 FD ROUND MONBOX
 SET BY CITY OF TIFFIN
 W/2 R.R.SPIKES
 HELD NW SPIKE AS REF29
 NEWREF29
 SE SPIKE AS REF28A
 NEWREF28A
 N: 521125.385
 E: 1782514.567
 12/5/23, DSA

NEAR FACE
 0.4' UP
 4" STEEL
 POST



RES #815

MIDDLE OF
 5TH STEP

Q CHERRY ST

Q SR 231

O.D.O.T. DISTRICT 2 SURVEY OFFICE (USE ONLY)

PERSONNEL

REFERENCE NO. 30

SHEET 1 OF 1

NOTES SEA

DATE 12/14/18

ROUTE SR 231

H.C. SEA

WEATHER CLOUDY

COUNTY SENECA

R.C. LL

TEMP. 45°

TOWNSHIP CLINTON

DWG BY RHOADES

PID 95778

SECTION 19

T 2 N R 15 E

TYPE MONUMENT MAG NAIL

ON SURFACE - ~~BELOW~~ ON

OFFSET 0 PAVEMENT LT : RT

- TO - EDGE PAVEMENT

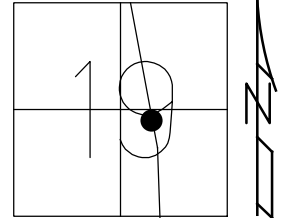
STATION: 488+67.21

HORIZ.DATUM:

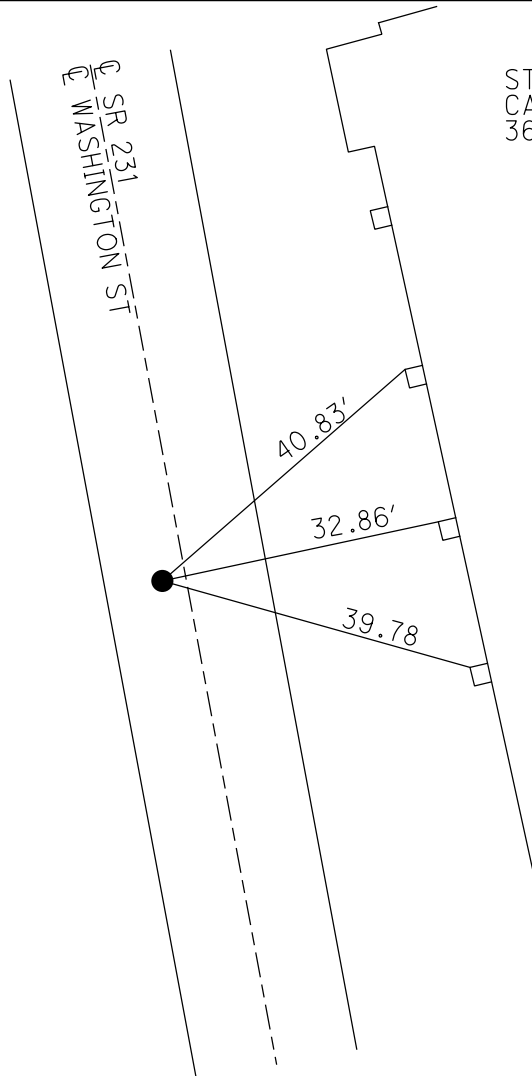
GEOID:

GRID: NORTHING: 526120.991

EASTING: 1782318.976



RECORD:
SET MAG NAIL
DGL ENGR. TIES
12/14/18, DGL



ST JOSEPH
CATHOLIC CHURCH
36 MELMORE ST

NE CORNER
COLUMNS