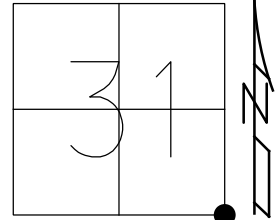


O.D.O.T. DISTRICT 2 SURVEY OFFICE (USE ONLY)

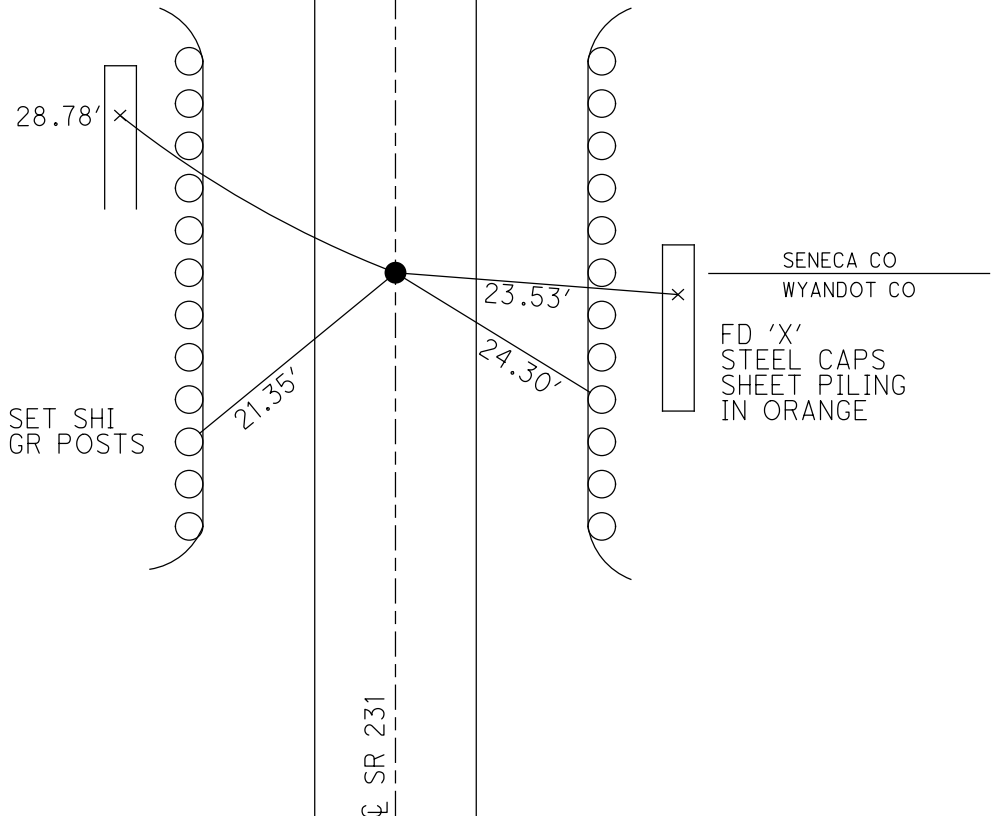
PERSONNEL \_\_\_\_\_ REFERENCE NO. 1 SHEET 1 OF 34  
 NOTES RHOADES DATE 11/6/23 ROUTE SR 231  
 H.C. AUBLE WEATHER SUNNY COUNTY SENECA  
 R.C. ASTON TEMP. 48° TOWNSHIP EDEN  
           NIESE SECTION 31  
 DWG BY RHOADES PID 95780 T 1 N R 15 E

TYPE MONUMENT MAG/WASHER  
 ON SURFACE - ~~BELOW~~ ON  
 OFFSET  $\text{C}$  PAVEMENT 0.5' ~~RT~~ : RT  
9.9' TO RT EDGE PAVEMENT  
 STATION: 0+00



HORZ.DATUM: NAD83(2011) GEOID: NAVD88 2018  
 GRID: NORTHING: 483976.406 EASTING: 1783428.064

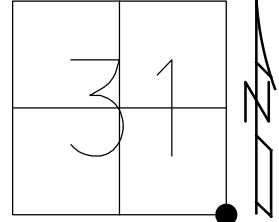
RECORD: P.I.  
 STA 0+00  
 $\Delta = 00^{\circ}18'40''$  RT  
 FD 1" IPIPE  
 1 1/2" DOWN  
 6/12/97, MB  
 SET P.K./WASHER  
 8/21/97, MB  
 FD P.K./WASHER  
 8/16/04, MC  
 FD P.K.NAIL  
 REF1  
 3/26/19  
 DNF  
 8/16/19, JFO  
 FD MAG SPIKE  
 REF1AA  
 4/18/23, DSA  
 SET MAG/WASHER  
 11/6/23, DSA



O.D.O.T. DISTRICT 2 SURVEY OFFICE (USE ONLY)

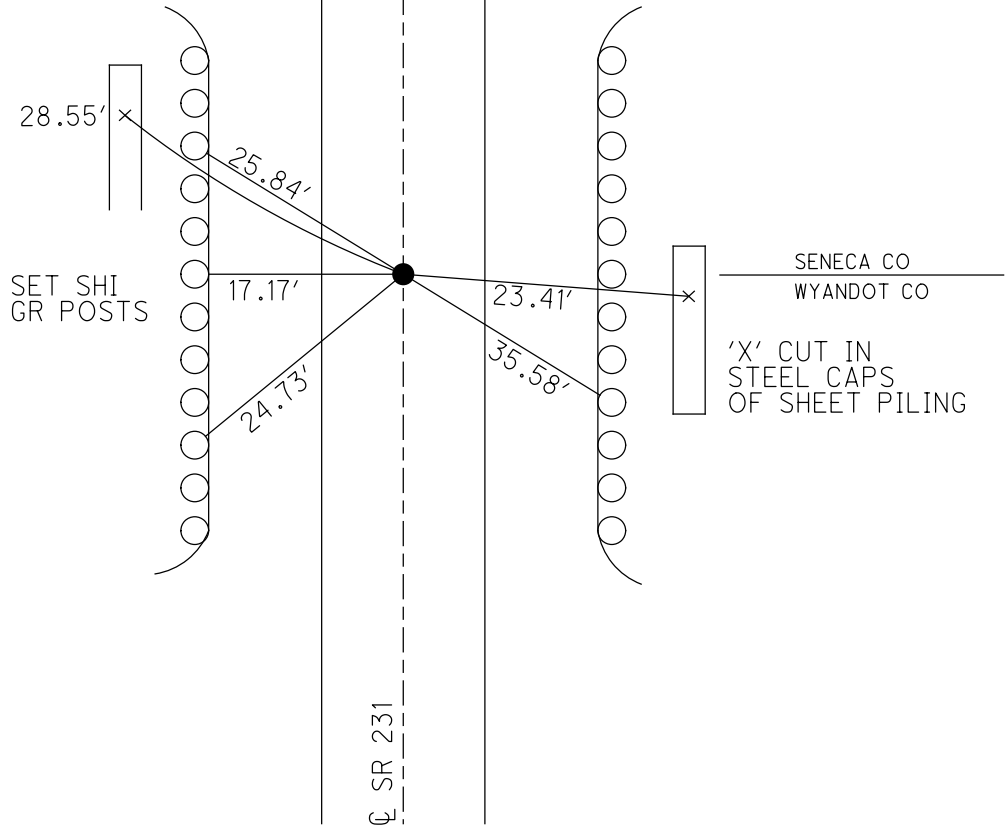
PERSONNEL \_\_\_\_\_ REFERENCE NO. 1 SHEET 1 OF 33  
 NOTES BARNHISEL DATE 6/12/97 ROUTE SR 231  
 H.C. CANTERBURY WEATHER SUNNY COUNTY SENECA  
 R.C. ROUSOS TEMP. 90° TOWNSHIP EDEN  
 DWG BY NIESE PID 107060 SECTION 31  
 T 1 N R 15 E

TYPE MONUMENT 1" IPIPE  
~~ON SURFACE~~ - BELOW 1 1/2"  
 OFFSET  $\odot$  PAVEMENT 0.5' ~~RT~~ : RT  
9.9' TO RT EDGE PAVEMENT  
 STATION: 0+00



HORZ. DATUM: NAD83(2011) GEOID: 2012A  
 GRID: NORTHING: 483976.408 EASTING: 1783428.093

RECORD: P.I.  
 STA 0+00  
 $\Delta = 00^{\circ}18'40''$  RT  
 FD 1" IPIPE  
 1 1/2" DOWN  
 6/12/97, MB  
 SET P.K./WASHER  
 8/21/97, MB  
 FD P.K./WASHER  
 8/16/04, MC  
 FD P.K.NAIL  
 REF1  
 3/26/19  
 DNF  
 8/16/19, JFO



O.D.O.T. DISTRICT 2 SURVEY OFFICE (USE ONLY)

PERSONNEL

REFERENCE NO. 1

SHEET 1 OF 33

NOTES BARNHESEL  
 H.C. CANTERBURY  
 R.C. ROUSOS

DATE 6/12/97  
 WEATHER SUNNY  
 TEMP. 90°

ROUTE SR 231  
 COUNTY SENECA  
 TOWNSHIP EDEN  
 SECTION 31  
 T 1 N R 15 E

DWG BY NIESE PID 107060

TYPE MONUMENT 1" IPIPE

~~ON SURFACE~~ - BELOW 1 1/2"

OFFSET  $\text{C}$  PAVEMENT 0.5' ~~RT~~ : RT  
9.9' TO RT EDGE PAVEMENT

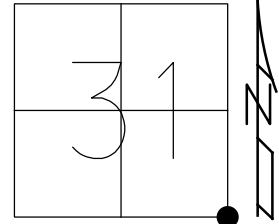
STATION: 0+00

HORZ. DATUM: NAD83(2011)

GEOID: 2012A

GRID: NORTHING: 483966.396

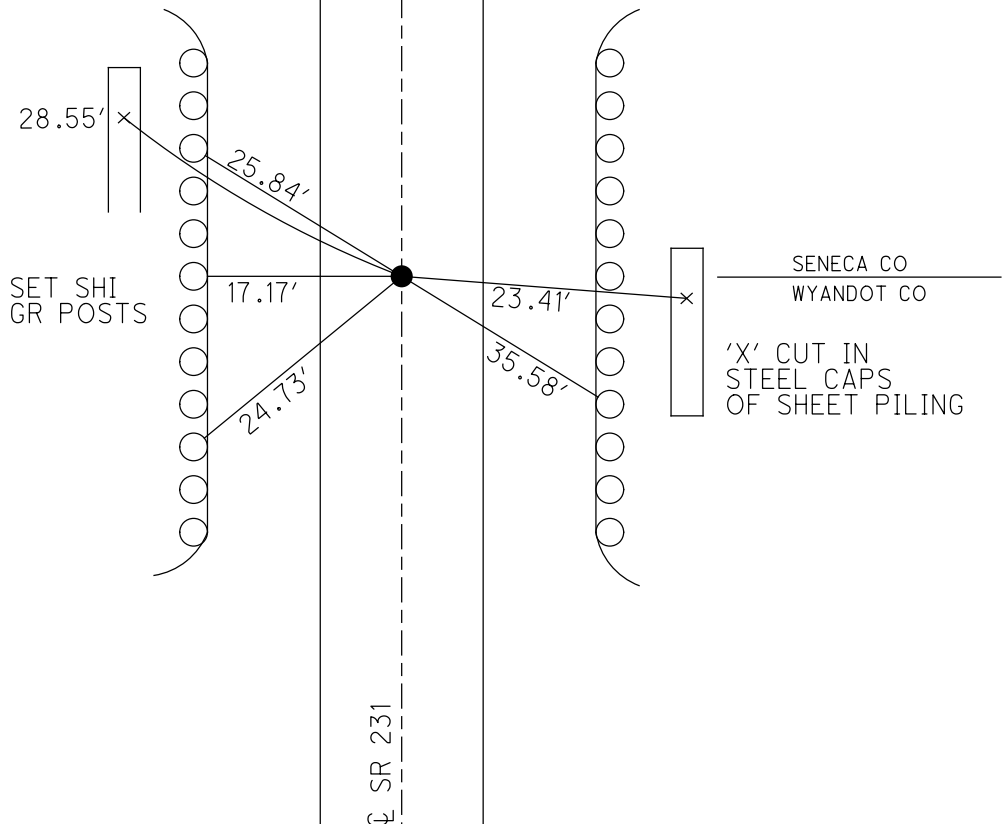
EASTING: 1783427.916



RECORD: P.I.  
 STA 0+00  
 $\Delta = 00^{\circ}18'40''$  RT  
 FD 1" IPIPE  
 1 1/2" DOWN  
 6/12/97, MB  
 SET P.K./WASHER  
 8/21/97, MB  
 FD P.K./WASHER  
 8/16/04, MC  
 FD P.K.NAIL  
 REF1  
 3/26/19  
 DNF  
 8/16/19, JFO

**483976.408**  
**THESE ARE**  
**THE CORRECT**  
**COORDINATES**

**1783428.093**



# O.D.O.T. DISTRICT 2 SURVEY OFFICE

PERSONNEL

REFERENCE NO. 1

SHEET 1 OF 27

NOTES Barnhisal

H.C. Canterbury

R.C. Rousar

Drawn By Rousar

DATE 6-12-99

WEATHER SUNNY

TEMP. 90°

ROUTE SR # 231

COUNTY Seneca / Wyandot

TOWNSHIP Eaton / Sycamore

SECTION 31, 32 Edw / 5, 6 Sycamore

T.L.N.R. 15 E & T 15, R 15 E

TYPE MONUMENT 1" DIA. IRON PIPE

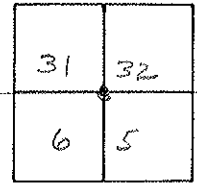
ON SURFACE - BELOW 1 1/2"

LEFT - CL PAV'T. - RIGHT 0.5' RT. OF E

99 TO RT EDGE PAVEMENT

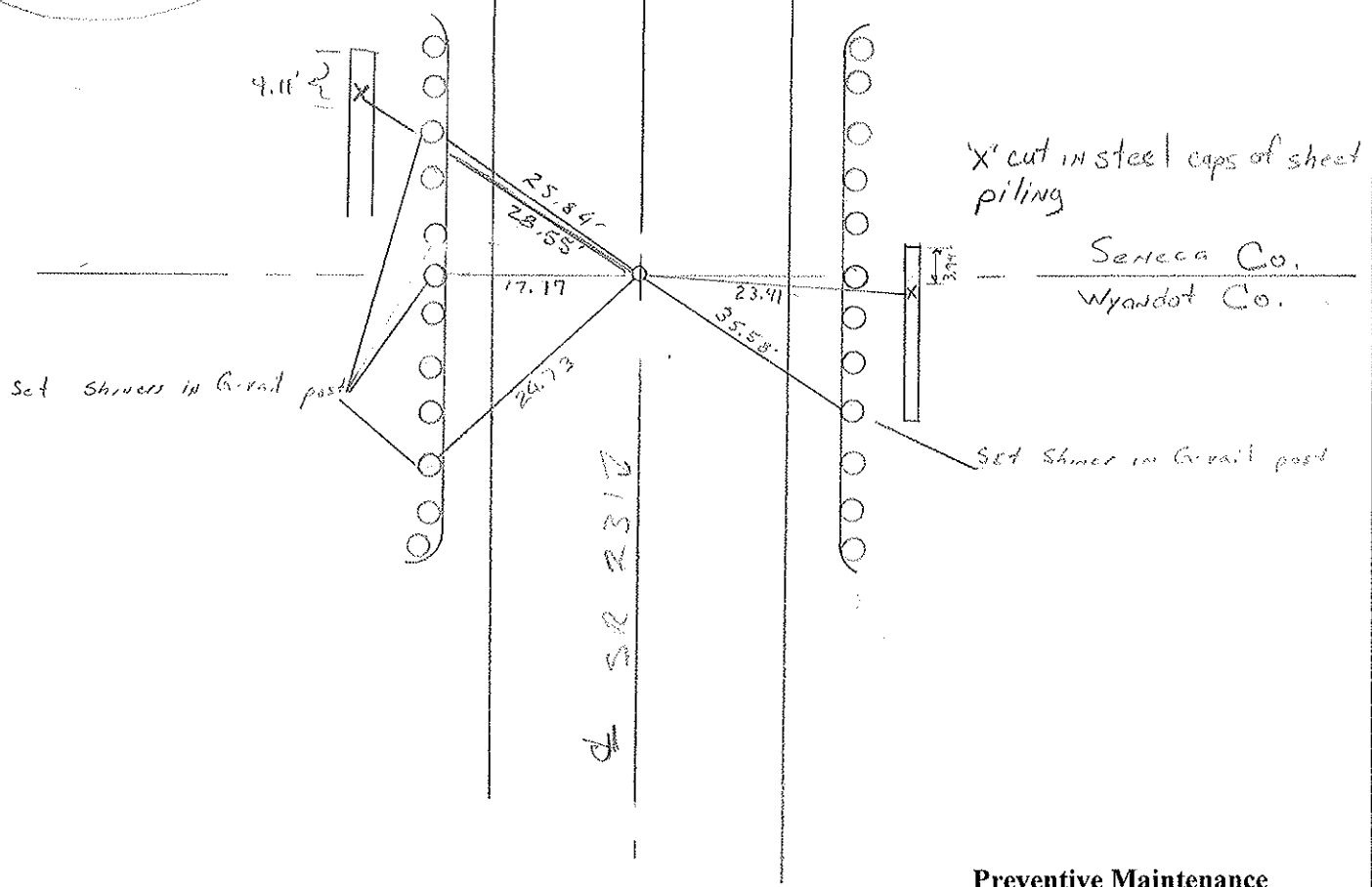
S.L.M. 0 + 000 M

Seneca  
Wyandot



P.I. (RECORD)  
 $\Delta = 00^{\circ} 18' 40''$  RT  
 0 + 00

RESET PK & WASHED RE  
 8-21-97  
 MB



Preventive Maintenance  
 Chip & Seal 2004  
 Existing Point Uncovered  
 Date 08/16/04 MC

Resurveyed 1997

O.D.O.T. DISTRICT 2 SURVEY OFFICE

SHEET 1 OF

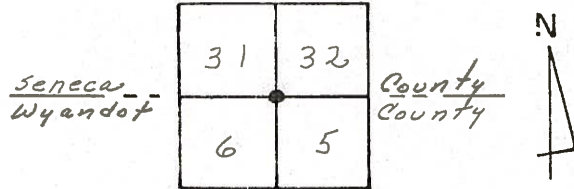
County Seneca S.R. # 231  
 Township Eden - Seneca County, Sycamore - Wyandot County  
 Section 31 & 32 (Eden) - 5 & 6 (Sycamore)  
 T1N, R15E, T15, R15E  
 Personnel Cronin  
Ripple  
Geuman  
Masser  
Barbour

Date 6/21/82

Weather Sunny - windy

Temp. \_\_\_\_\_

①

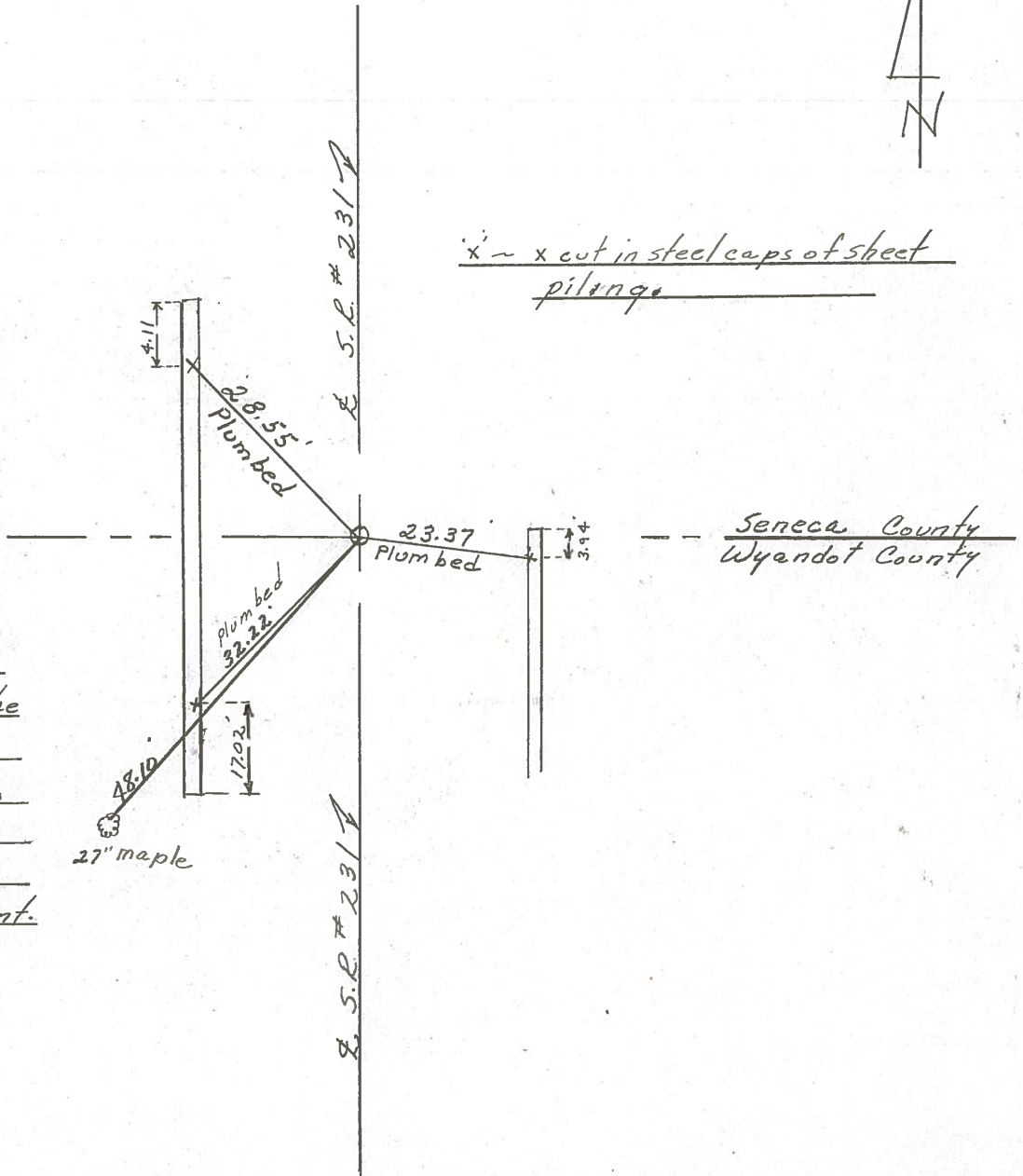


P.I. \_\_\_\_\_

$\Delta = 00^{\circ}18'40''$  Rt.

0+00

Set 1" (I.D.) x 22" iron pipe  
 by using nail & shiner  
 found 6" below surface  
 at Sta. 1+00 & mine spike  
 on surface at Sta. 11+00  
 References - Field Book  
 #138 Pages 1704  
 Also both Counties had  
 identical ties for this point.





PERSONNEL TITLE PERSONNEL TITLE

COUNTY Seneca DATE 2-24-70

S. R. 231 WEATHER 110

SEC. B TEMP. 42°

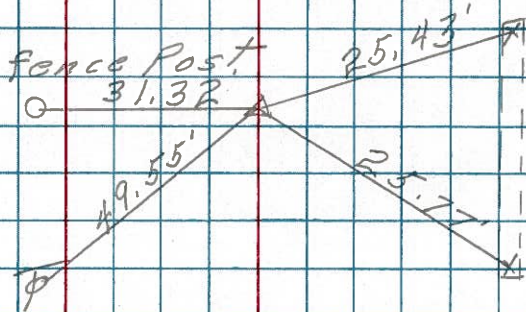
DESCRIPTION Wyandot Co. Line to U.S. #224 JOB NO. \_\_\_\_\_

LEFT CENTER LINE RIGHT

2

26+33.7  
spk. on & R/W  
6" down

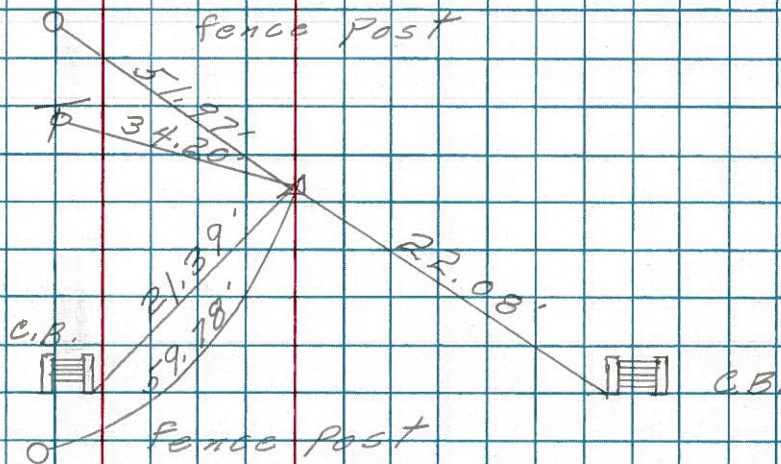
R



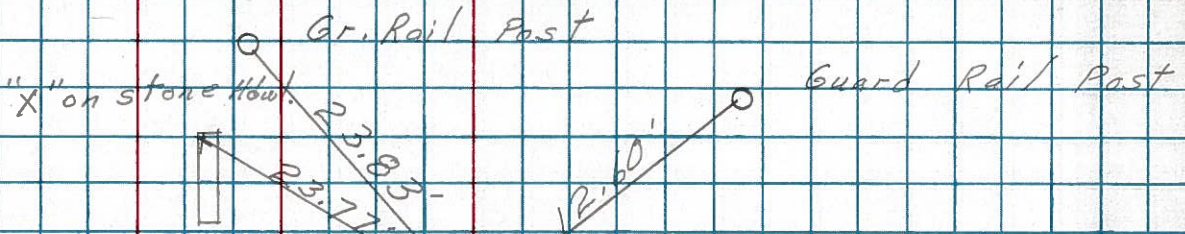
X

11+00  
R. R. spk.  
spk. may  
move cozy  
Black Top

X



1-A



1

0+00  
Iron Pin on & R/W  
2" down

Seneca, Co.  
Wyandot, Co.

18" Maple

"X" on stone Hdwl.

SEE NEW TIES  
OF 6/2/82  
20MIN



PERSONNEL TITLE PERSONNEL TITLE  
 Schneider \_\_\_\_\_  
 Mosser \_\_\_\_\_  
 Potts \_\_\_\_\_

COUNTY Seneca DATE 10-29-69  
 S. R. 231 WEATHER Fair  
 SEC. B TEMP. 35°

DESCRIPTION Wyandot-Seneca Co. Line to Tiffin JOB NO. \_\_\_\_\_  
 LEFT CENTER LINE RIGHT

③

52+82  
 R.R. spk. on E of R/W  
 7 1/2" down

8663

②

26+33.7  
 Iron Pin on E R/W  
 4" down

8662

1-A

11+00  
 R.R. spk. ~~3" down~~  
 (spk. may move)  
 oozy Black top

8661

①

0+00  
 Iron Pin on E R/W  
 2" down

8660

