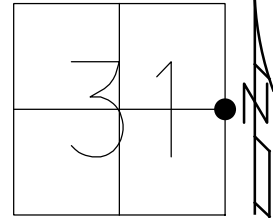


O.D.O.T. DISTRICT 2 SURVEY OFFICE (USE ONLY)

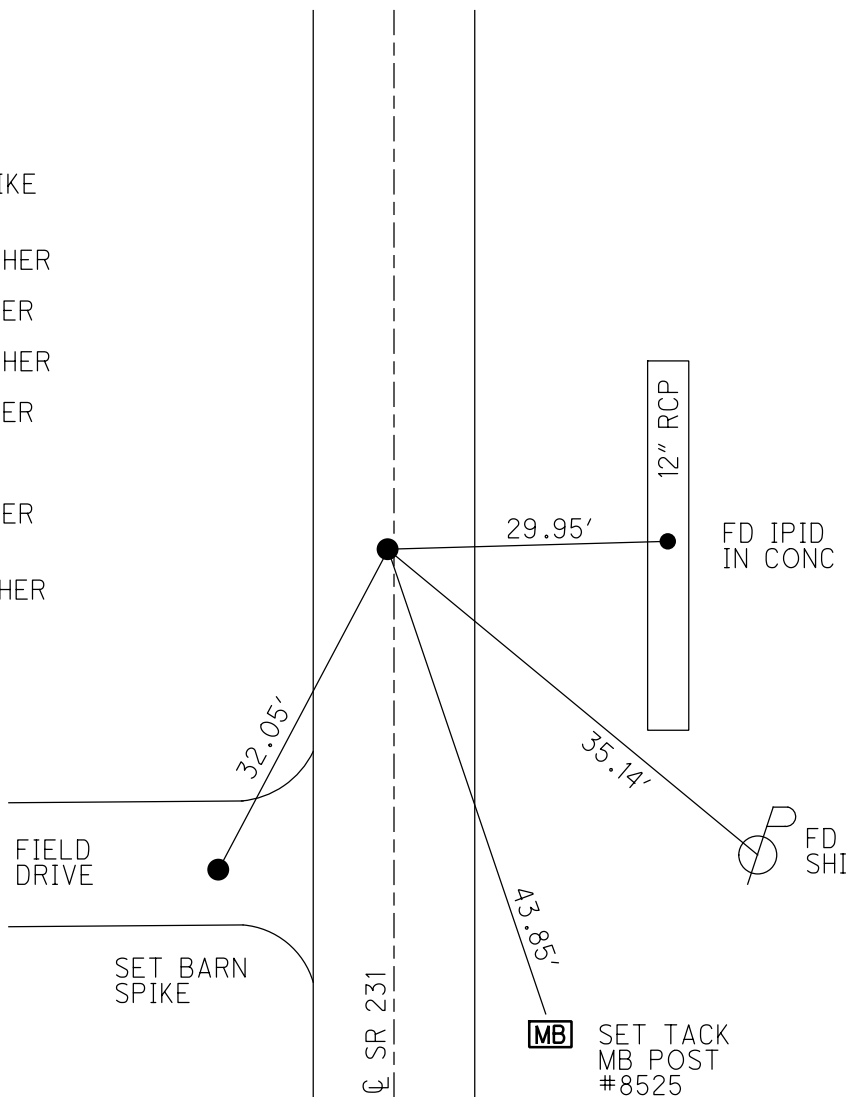
PERSONNEL \_\_\_\_\_ REFERENCE NO. 2 SHEET 3 OF 34  
 NOTES RHOADES DATE 11/6/23 ROUTE SR 231  
 H.C. AUBLE WEATHER SUNNY/WINDY COUNTY SENECA  
 R.C. ASTON TEMP. 48° TOWNSHIP EDEN  
           NIESE SECTION 31  
 DWG BY RHOADES PID 95780 T 1 N R 15 E

TYPE MONUMENT MAG/WASHER  
 ON SURFACE - ~~BELOW~~ ON  
 OFFSET 0.5' LT : ~~RT~~  
9.3' TO LT EDGE PAVEMENT  
 STATION: 26+48



HORZ.DATUM: NAD83(2011) GEOID: NAVD88 2018  
 GRID: NORTHING: 486609.719 EASTING: 1783454.063

RECORD: P.I.  
 STA. 26+33.7  
 FD SPIKE  
 ON LT R/W  
 6" DOWN  
 FD LG.R.R.SPIKE  
 1.5" DOWN  
 6/12/97, MB  
 SET P.K./WASHER  
 8/21/97, MB  
 FD P.K./WASHER  
 8/16/04, MC  
 SET P.K./WASHER  
 8/21/97, MB  
 FD P.K./WASHER  
 REF2  
 3/26/19  
 8/16/19, JFO  
 FD P.K./WASHER  
 REF2  
 4/18/23, TDN  
 SET MAG/WASHER  
 11/6/23, DSA



O.D.O.T. DISTRICT 2 SURVEY OFFICE (USE ONLY)

PERSONNEL \_\_\_\_\_ REFERENCE NO. 2 SHEET 3 OF 33

NOTES BARNHISEL DATE 6/12/97 ROUTE SR 231  
 H.C. CANTERBURY WEATHER SUNNY COUNTY SENECA  
 R.C. ROUSOS TEMP. 75° TOWNSHIP EDEN  
 SECTION 31

DWG BY NIESE PID 107060 T 1 N R 15 E

TYPE MONUMENT LG.R.R.SPIKE

~~ON SURFACE~~ - BELOW 1.5"

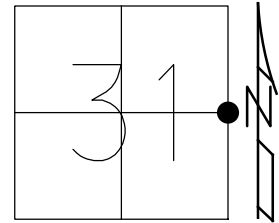
OFFSET  $\odot$  PAVEMENT 0.5' LT : ~~RT~~

9.3' TO LT EDGE PAVEMENT

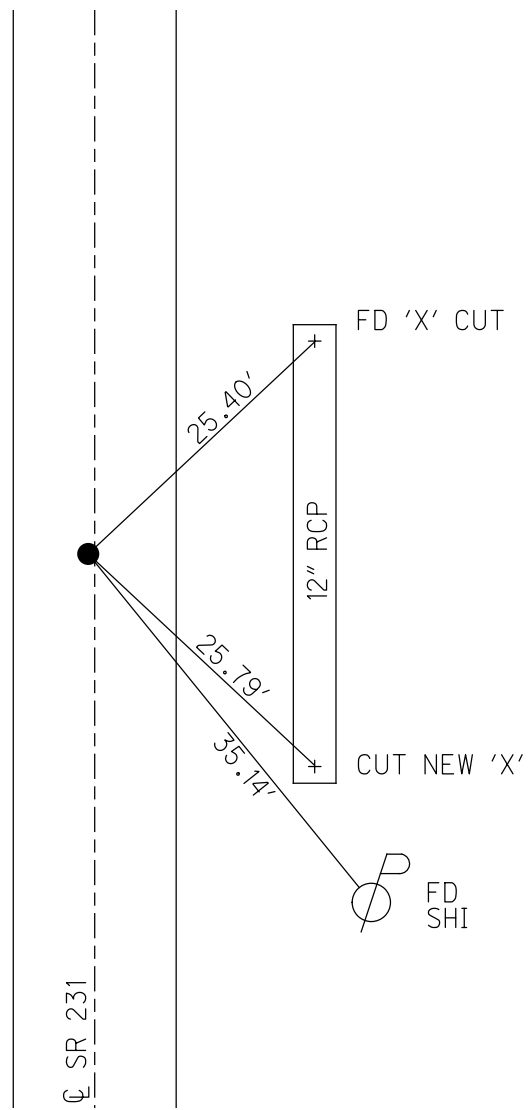
STATION: 26+48

HORZ.DATUM: NAD83(2011) GEOID: 2012A

GRID: NORTHING: 486609.719 EASTING: 1783454.063



RECORD:  
 STA.26+33.7  
 FD SPIKE  
 ON  $\odot$  R/W  
 6" DOWN  
 FD LG.R.R.SPIKE  
 1.5" DOWN  
 6/12/97, MB  
 SET P.K./WASHER  
 8/21/97, MB  
 FD P.K./WASHER  
 8/16/04, MC  
 SET P.K./WASHER  
 8/21/97, MB  
 FD P.K./WASHER  
 REF2  
 3/26/19  
 8/16/19, JFO



# O.D.O.T. DISTRICT 2 SURVEY OFFICE

PERSONNEL

REFERENCE NO. 2

SHEET 3 OF 27

NOTES Barnhisel

H.C. CANTERBURY

DATE 6-12-97

ROUTE SR 231

R.C. Rousos

WEATHER SUNNY

COUNTY SENECA

Drawn By Rousos

TEMP. +75°

TOWNSHIP EDEN

SECTION 31/32

T. 1 N. R 15 E.

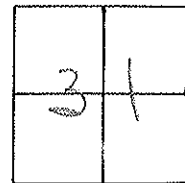
TYPE MONUMENT Large RR Spike

ON SURFACE - BELOW 1.5"

LEFT - C PAV'T. - RIGHT 0.5 Lt

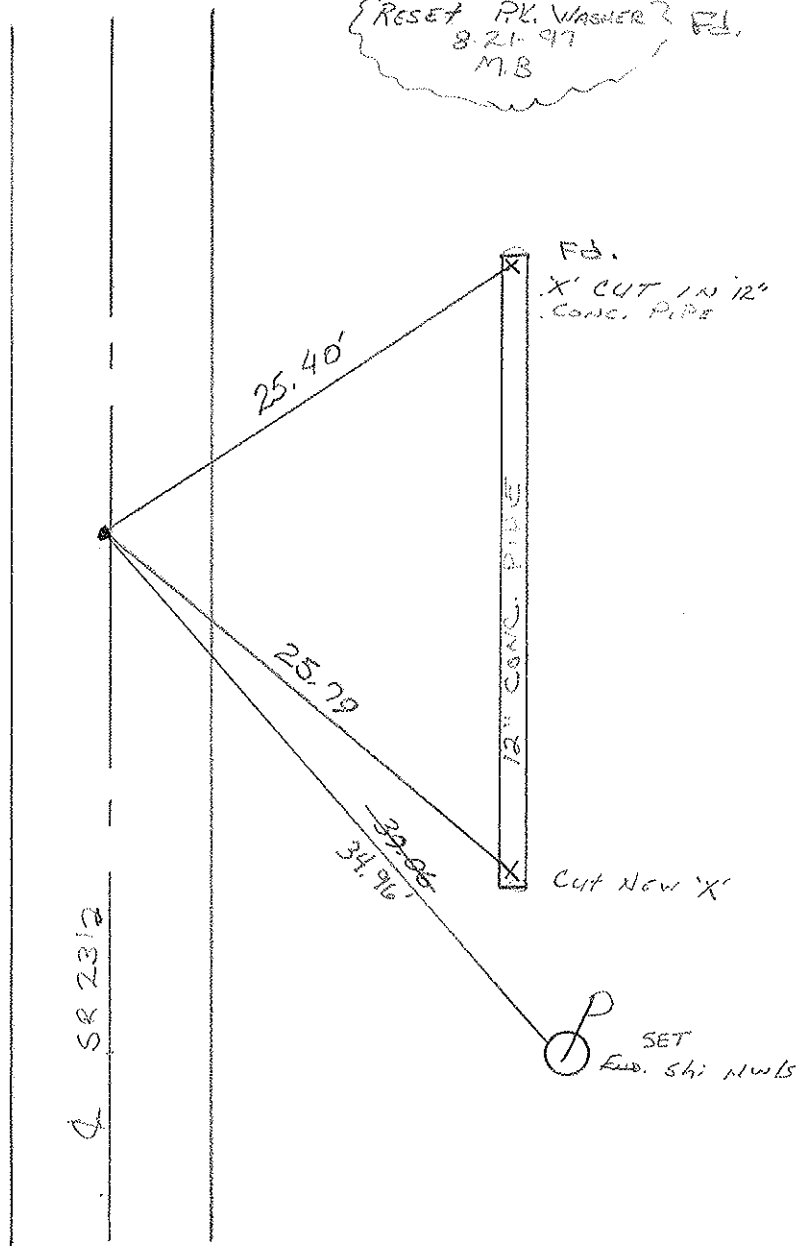
9.3 TO Lt EDGE PAVEMENT

S.L.M. 0+807 M. 26+48



RESET PK. WASHER? FD.  
8-21-97  
M.B.

RECORD  
26 + 33.7  
Spk on E RW  
6" down



Preventive Maintenance  
Chip & Seal 2004  
Existing Point Uncovered  
Date 08/16/04 AC

SR 231/2



PERSONNEL TITLE PERSONNEL TITLE

COUNTY Seneca

DATE 2-24-72

S. R. 231

WEATHER

SEC. B

TEMP. 42°

DESCRIPTION Wyandot Co. Line to U.S. # 224

JOB NO.

LEFT

CENTER LINE

RIGHT

2

26+337  
spk. on & R/W  
6" down

A

fence post  
31.32'

25.43'

"X" cut in 13"  
conc pipe

X

1-A

11+00  
R.R. Spk.  
spk. may  
move 0024  
Black Top

X

fence post  
54.92'  
34.20'

C.B.

21.59'  
59.28'

22.08'

C.B.



fence post

Gr. Rail Post

"X" on stone Hdwl.



23.83'  
23.77'

12.60'

Guard Rail Post

1

0+00  
Iron pin on & R/W  
2" down

Seneca, Co.  
Wyandot, Co.

18" Maple

50.21'

23.78'

"X" on stone Hdwl.



SEE NEW TIES  
OF 6/21/82  
1:20 IN



| PERSONNEL   | TITLE | PERSONNEL   | TITLE | COUNTY                            | DATE         |
|-------------|-------|-------------|-------|-----------------------------------|--------------|
| Schneider   |       |             |       | Seneca                            | 10-29-69     |
| Mosser      |       |             |       | S. R. 231                         | WEATHER Fair |
| Potts       |       |             |       | SEC. B                            | TEMP. 35°    |
| DESCRIPTION |       |             |       | Wyandot-Seneca Co. Line to Tiffin | JOB NO.      |
| LEFT        |       | CENTER LINE |       | RIGHT                             |              |

3

52+82  
R.R. spk. on E of R/W  
7 1/2" down

8663

2

26+33.7  
Iron Pin on E R/W  
4" down

8662

1-A

11+00  
R.R. spk. 3" down  
(SPK may move)  
(oozy Black top)

8661

1

0+00  
Iron Pin on E R/W  
2" down

8660

