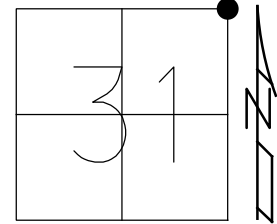


O.D.O.T. DISTRICT 2 SURVEY OFFICE (USE ONLY)

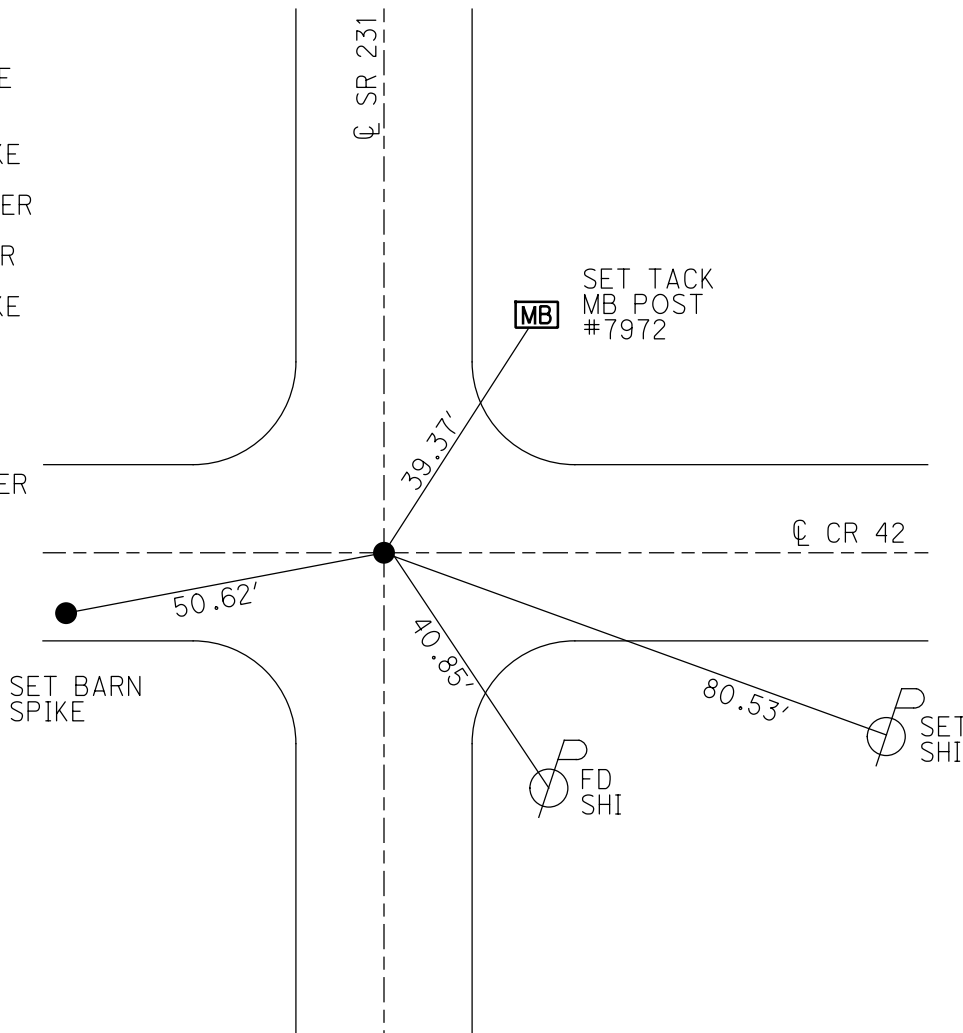
PERSONNEL \_\_\_\_\_ REFERENCE NO. 3 SHEET 4 OF 34  
 NOTES RHOADES DATE 11/6/23 ROUTE SR 231  
 H.C. AUBLE WEATHER SUNNY/WINDY COUNTY SENECA  
 R.C. ASTON TEMP. 48° TOWNSHIP EDEN  
 \_\_\_\_\_ NIESE SECTION 31  
 DWG BY RHOADES PID 95780 T 1 N R 15 E

TYPE MONUMENT MAG/WASHER  
 ON SURFACE - ~~BELOW~~ ON  
 OFFSET ☉ PAVEMENT ON LT : RT  
10.7' TO LT EDGE PAVEMENT  
 STATION: 53+04



HORIZ.DATUM: NAD83(2011) GEOID: NAVD88 2018  
 GRID: NORTHING: 489257.630 EASTING: 1783492.520

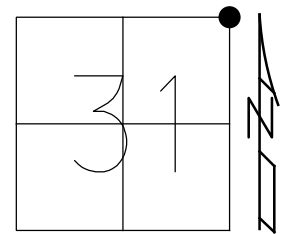
RECORD:  
 STA. 52+82  
 FD SM.SPIKE  
 ATOP R.R.SPIKE  
 ON ☉ R/W  
 4 1/2" DOWN  
 FD SM.R.R.SPIKE  
 6/12/97, MB  
 SET P.K./WASHER  
 8/21/97, MB  
 FD P.K./WASHER  
 8/16/04, MC  
 FD SM.R.R.SPIKE  
 REF3  
 4 1/2" DOWN  
 3/26/19  
 8/16/19, JFO  
 REF3  
 4/18/23, TDN  
 SET MAG/WASHER  
 11/6/23, DSA



O.D.O.T. DISTRICT 2 SURVEY OFFICE (USE ONLY)

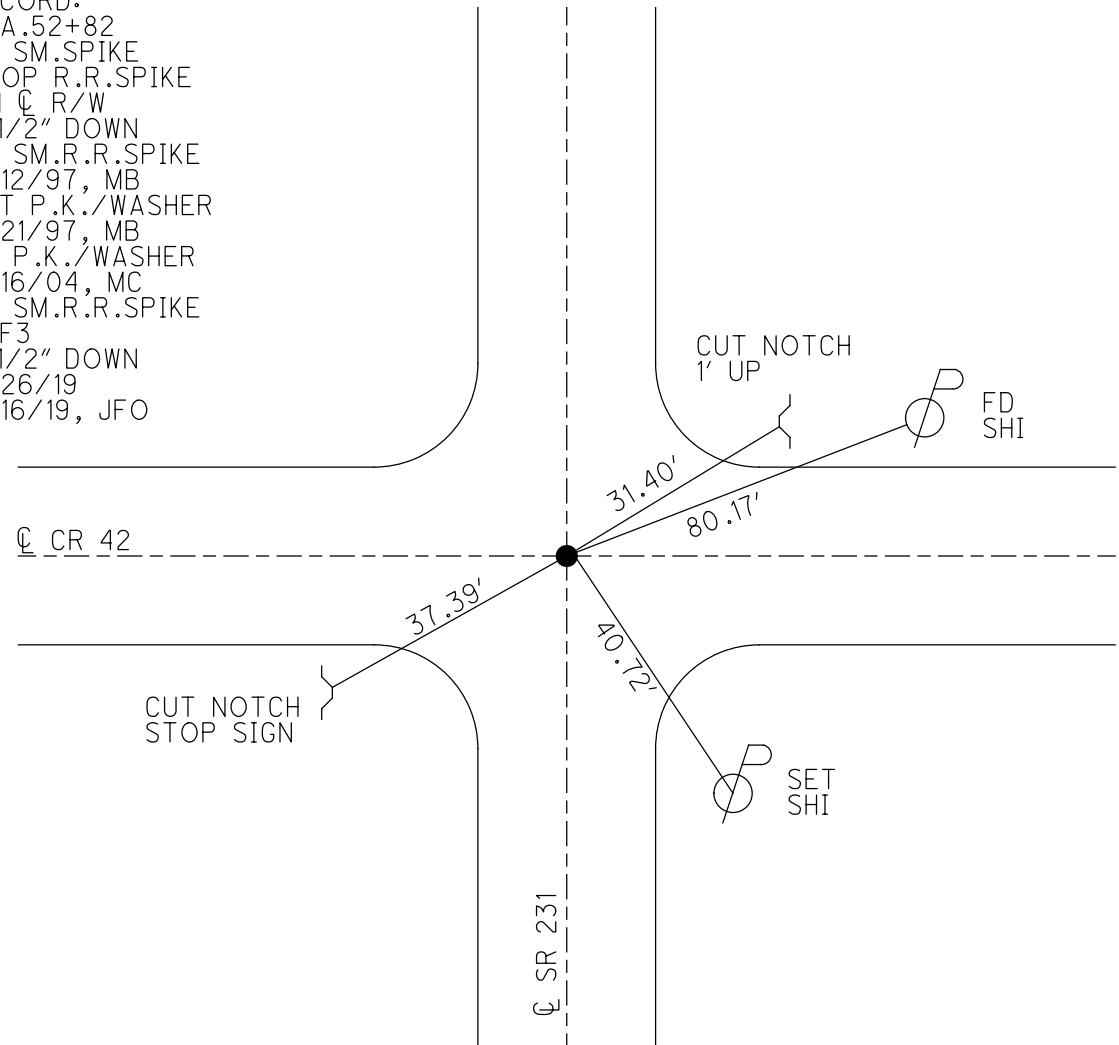
PERSONNEL \_\_\_\_\_ REFERENCE NO. 3 SHEET 4 OF 33  
 NOTES BARNHEISEL DATE 6/12/97 ROUTE SR 231  
 H.C. CANTERBURY WEATHER SUNNY COUNTY SENECA  
 R.C. ROUSOS TEMP. 75° TOWNSHIP EDEN  
 DWG BY NIESE PID 107060 SECTION 31  
 T 1 N R 15 E

TYPE MONUMENT SM.R.R.SPIKE  
~~ON SURFACE~~ - BELOW 3"  
 OFFSET  $\text{\textcircled{C}}$  PAVEMENT ON LT : RT  
10.7' TO LT EDGE PAVEMENT  
 STATION: 53+04



HORZ.DATUM: NAD83(2011) GEOID: 2012A  
 GRID: NORTHING: 489257.630 EASTING: 1783492.520

RECORD:  
 STA.52+82  
 FD SM.SPIKE  
 ATOP R.R.SPIKE  
 ON  $\text{\textcircled{C}}$  R/W  
 4 1/2" DOWN  
 FD SM.R.R.SPIKE  
 6/12/97, MB  
 SET P.K./WASHER  
 8/21/97, MB  
 FD P.K./WASHER  
 8/16/04, MC  
 FD SM.R.R.SPIKE  
 REF3  
 4 1/2" DOWN  
 3/26/19  
 8/16/19, JFO



# O.D.O.T. DISTRICT 2 SURVEY OFFICE

PERSONNEL

REFERENCE NO. 3

SHEET 4 OF 27

NOTES Borwhisel

H.C. CANTERBURY

R.C. Rousos

Drawn By Rousos

DATE 6-12-99

WEATHER SUNNY

TEMP. +75°

ROUTE SR 231

COUNTY SENECA

TOWNSHIP EDEN

SECTION 29, 30, 31, 32

T.L.N.R 15 E

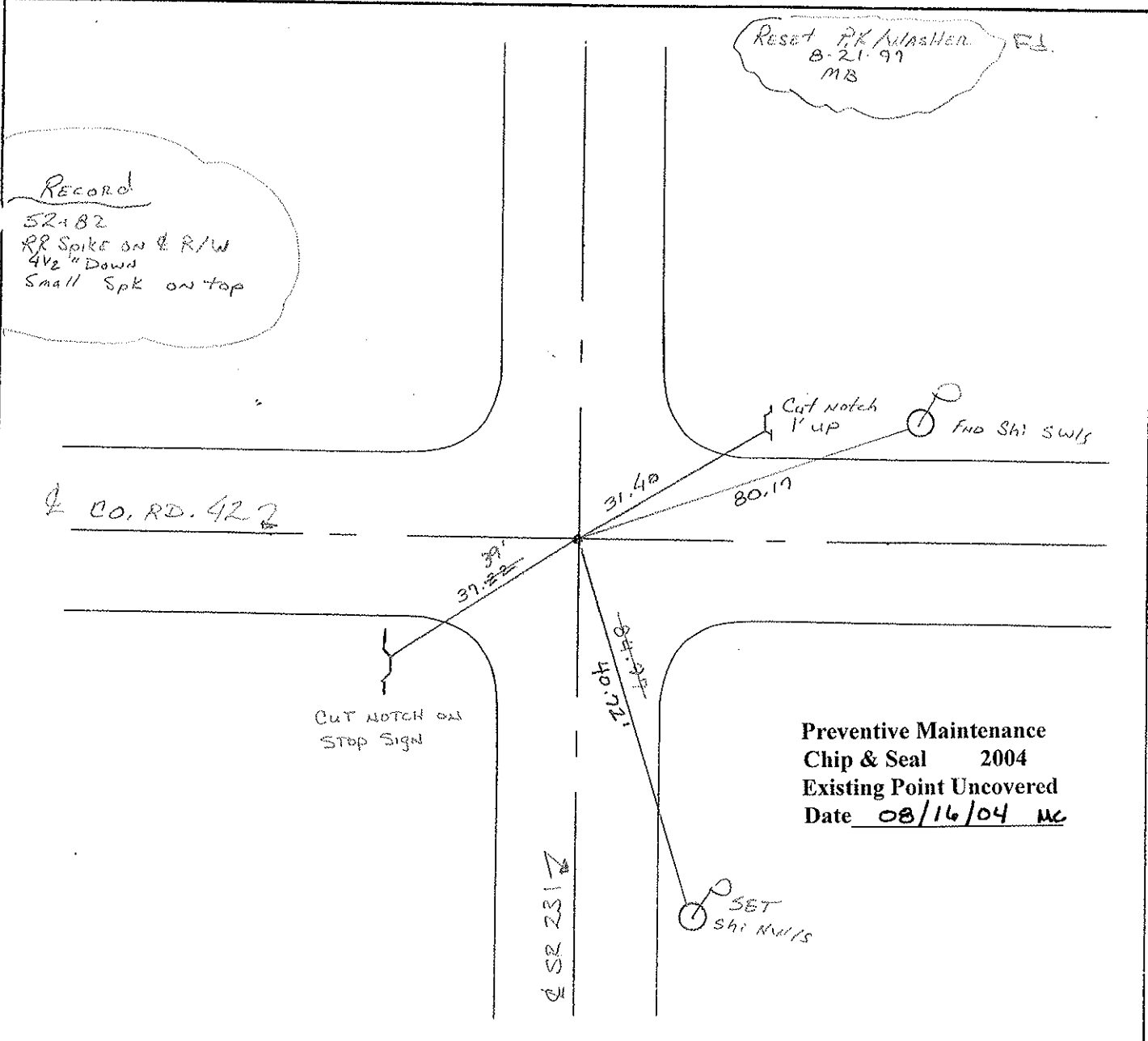
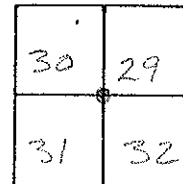
TYPE MONUMENT Sm RR Spike

ON-SURFACE - BELOW 3"

LEFT- & PAV'T. - RIGHT ON &, ON & East

10.9 TO LT EDGE PAVEMENT

S.L.M. 1+616.8M 53+04



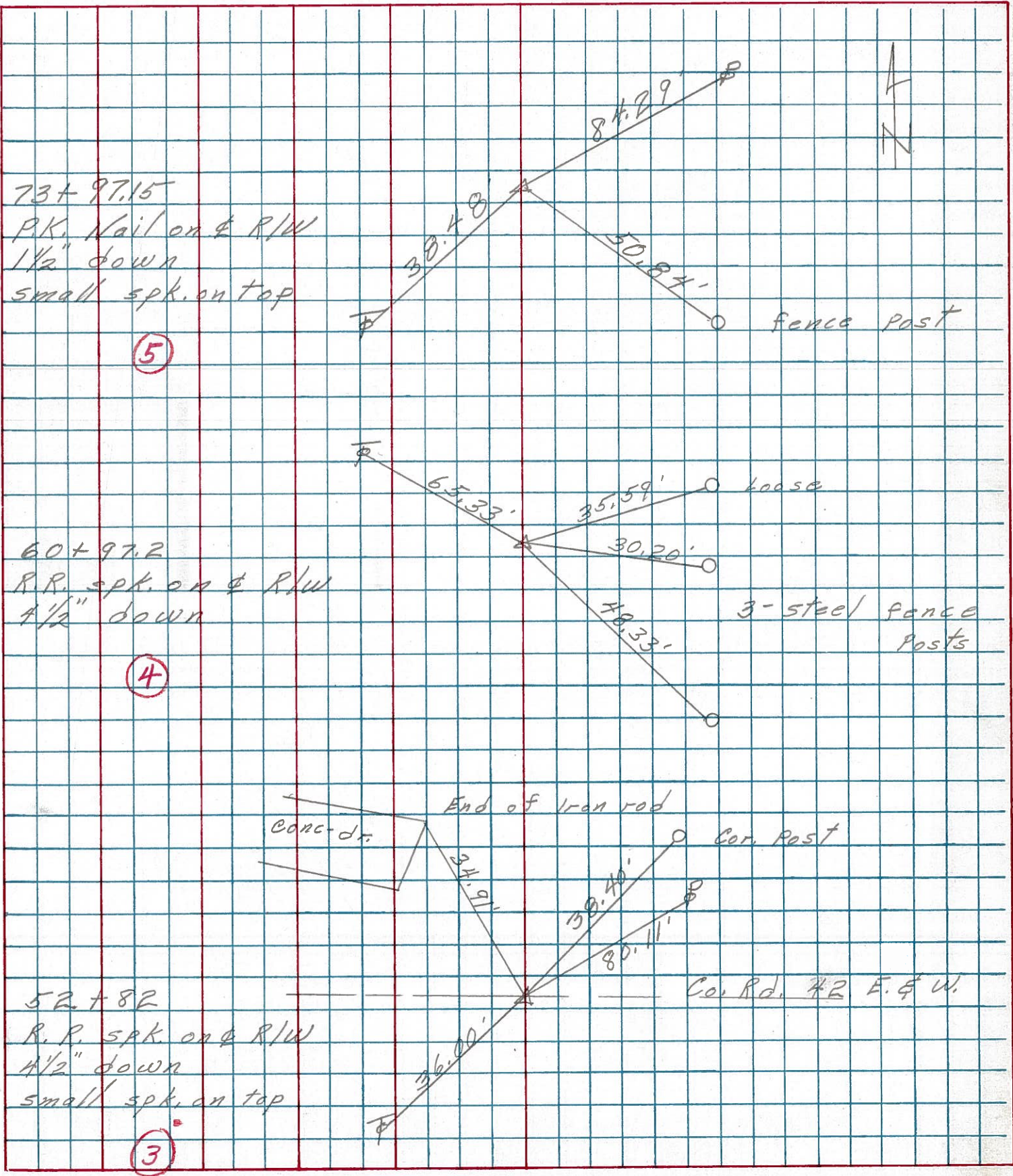
PERSONNEL \_\_\_\_\_ TITLE \_\_\_\_\_ PERSONNEL \_\_\_\_\_ TITLE \_\_\_\_\_

COUNTY Seneca DATE 2-24-75

S. R. 231 WEATHER \_\_\_\_\_

SEC. B TEMP. 42°

DESCRIPTION Wyandot Co. Line to U.S. 224 JOB NO. \_\_\_\_\_  
LEFT CENTER LINE RIGHT



73+97.15  
P.K. Nail on & R/W  
1 1/2" down  
small spk. on top

(5)

60+97.2  
P.R. spk. on & R/W  
1 1/2" down

(4)

52+82  
P.R. spk. on & R/W  
1 1/2" down  
small spk. on top

(3)

PERSONNEL	TITLE	PERSONNEL	TITLE	COUNTY	DATE
Schneider				Seneca	10-29-69
Mosser				S. R. 231	WEATHER Fair
Potts				SEC. B	TEMP. 35°
DESCRIPTION				Wyandot-Seneca Co. Line to Tiffin	JOB NO.

3

52+82  
R.R. spk. on E of R/W  
7 1/2" down

8663

2

26+33.7  
Iron Pin on E R/W  
4" down

8662

1-A

11+00  
R.R. spk. 3" down  
(SPK may move)  
(oozy Black top)

8661

1

0+00  
Iron Pin on E R/W  
2" down

8660

