

O.D.O.T. DISTRICT 2 SURVEY OFFICE (USE ONLY)

PERSONNEL \_\_\_\_\_ REFERENCE NO. 4 SHEET 5 OF 34  
NOTES RHOADES DATE 11/6/23 ROUTE SR 231  
H.C. AUBLE WEATHER SUNNY/WINDY COUNTY SENECA  
R.C. ASTON TEMP. 48° TOWNSHIP EDEN  
NIESE SECTION 30  
DWG BY RHOADES PID 95780 T 1 N R 15 E

TYPE MONUMENT D.N.F.-R.R.SPIKE

~~ON SURFACE~~ - BELOW 4"

OFFSET  $\varnothing$  PAVEMENT 0.6" ~~LT~~ : RT

9.8' TO RT EDGE PAVEMENT

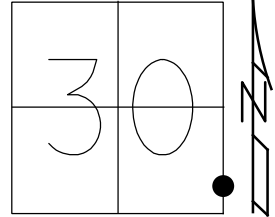
STATION: 60+97.20

HORZ.DATUM: -

GEOID: -

GRID: NORTHING: -

EASTING: -



RECORD:  
STA.60+97.2  
FD R.R.SPIKE  
ON  $\varnothing$  R/W  
4 1/2" DOWN  
FD R.R.SPIKE  
4" DOWN  
6/12/97, MB  
SET P.K./WASHER  
8/21/97, MB  
D.N.F  
6/8/04, MB  
3/26/19, JFO  
4/18/23, TDN  
11/6/23, DSA

$\varnothing$  SR 231

O.D.O.T. DISTRICT 2 SURVEY OFFICE (USE ONLY)

PERSONNEL

REFERENCE NO. 4

SHEET 5 OF 33

NOTES BARNHISEL

DATE 6/12/97

ROUTE SR 231

H.C. CANTERBURY

WEATHER SUNNY

COUNTY SENECA

R.C. ROUSOS

TEMP. 75°

TOWNSHIP EDEN

SECTION 30

DWG BY NIESE

PID 107060

T 1 N R 15 E

TYPE MONUMENT R.R.SPIKE

~~ON SURFACE~~ - BELOW 4"

OFFSET 0.6" ~~LT~~ : RT

9.8' TO RT EDGE PAVEMENT

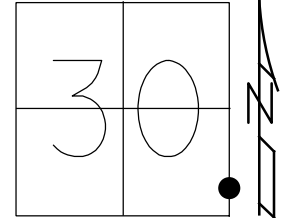
STATION: 60+97.20

HORIZ.DATUM: -

GEOID: -

GRID: NORTHING: -

EASTING: -



RECORD:  
STA.60+97.2  
FD R.R.SPIKE  
ON 0 R/W  
4 1/2" DOWN  
FD R.R.SPIKE  
4" DOWN  
6/12/97, MB  
SET P.K./WASHER  
8/21/97, MB  
D.N.F  
6/8/04, MB  
3/26/19, JFO

0 SR 231

O.D.O.T. DISTRICT 2 SURVEY OFFICE

PERSONNEL

REFERENCE NO. 4

SHEET 5 OF 27

NOTES Barnhiser

H.C. Canterbury

R.C. Rodson

Drawn By Rousas

DATE 6-12-99

WEATHER SUNNY

TEMP. +75°

ROUTE SR 231

COUNTY SENECA

TOWNSHIP EDEN

SECTION 30, 29

T. L. N. R. 15 E

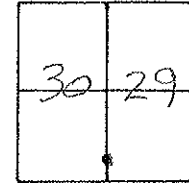
TYPE MONUMENT RR SPIKE

ON SURFACE - BELOW 4"

LEFT - ~~C~~ PAW'T. - RIGHT 0.6" RT

9.8 TO RT EDGE PAVEMENT

S.L.M. 14858.42 M



Reset PK/WASHER  
8-21-99  
MB

Did not find 4/29/04  
MB.

RECORD  
60797.2  
RR Spk on & R/W  
4 1/2" Down

Note:  
ALL TIES GONE.  
No ties AVAILABLE  
set T. Hubs during  
construction, then  
removed.

SR 231

PERSONNEL TITLE PERSONNEL TITLE

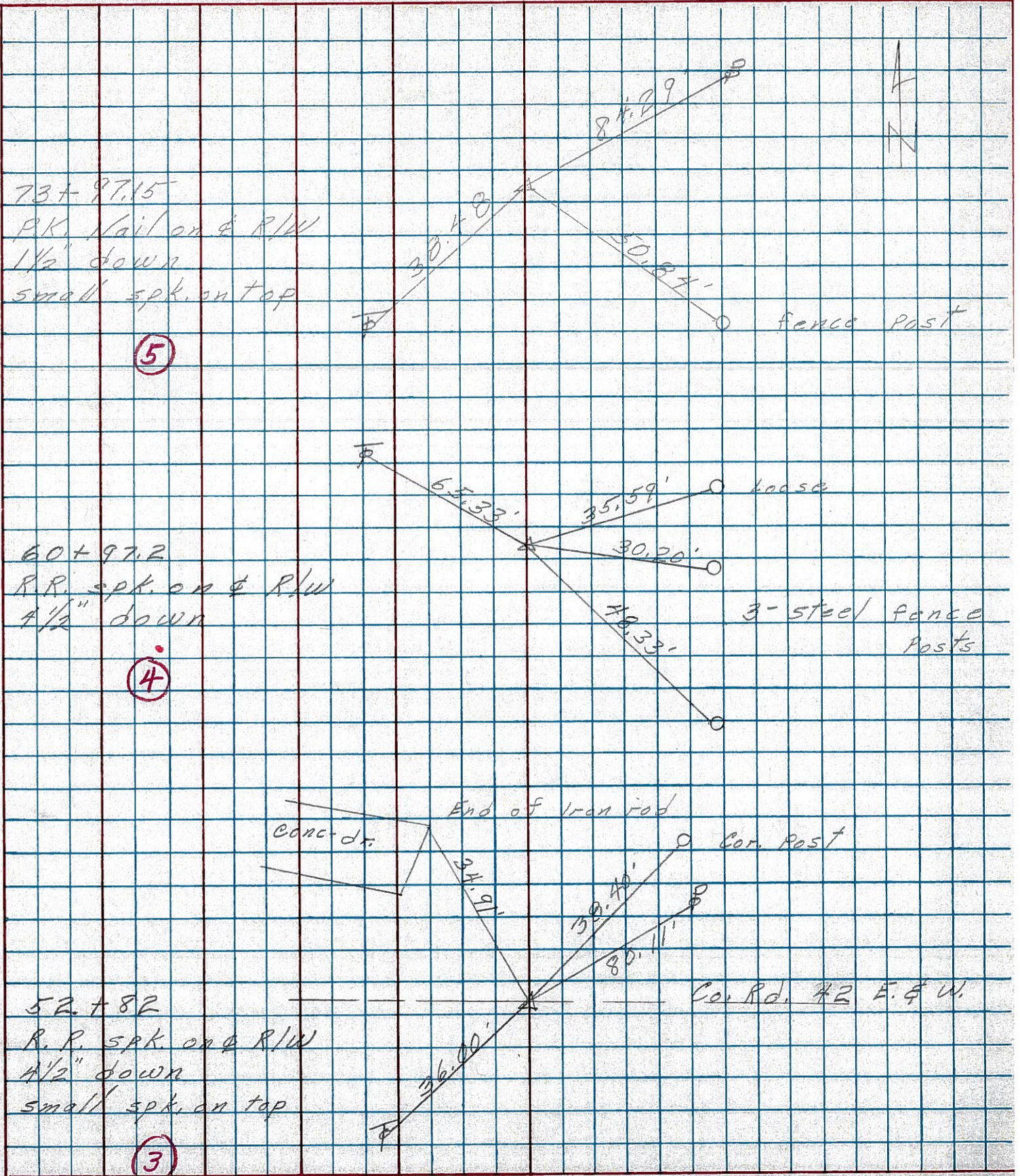
COUNTY Seneca DATE 2-24-75

S. R. R 31 WEATHER

SEC. B TEMP. 42°

DESCRIPTION Wyandot Co. Line to U.S. 224 JOB NO.

LEFT CENTER LINE RIGHT



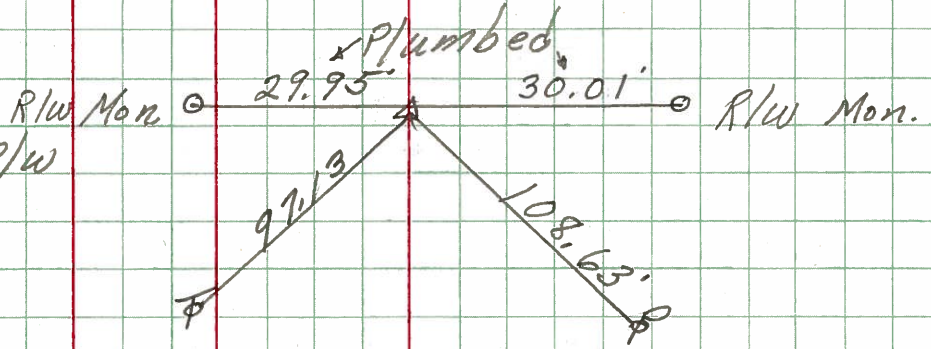
PERSONNEL TITLE PERSONNEL TITLE COUNTY Seneca DATE 10-29-69  
Schneider \_\_\_\_\_  
Mosser \_\_\_\_\_  
Potts \_\_\_\_\_  
 S. R. 231 WEATHER Fair  
 SEC. B TEMP. 35°

DESCRIPTION Wyandot Co. Line to Tiffin JOB NO. \_\_\_\_\_  
 LEFT CENTER LINE RIGHT

7

100+00  
 R.R. spk. on & R/W  
 4 1/2" down

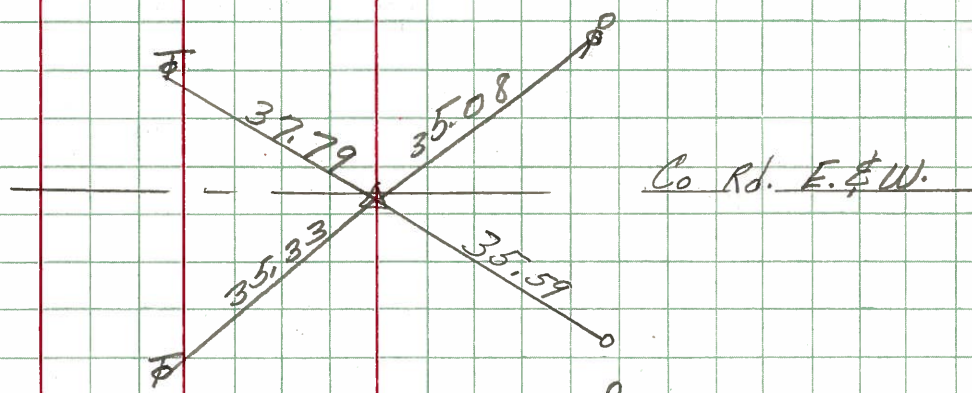
8667



6

79+26  
 R.R. spk.  
 P.K. on top

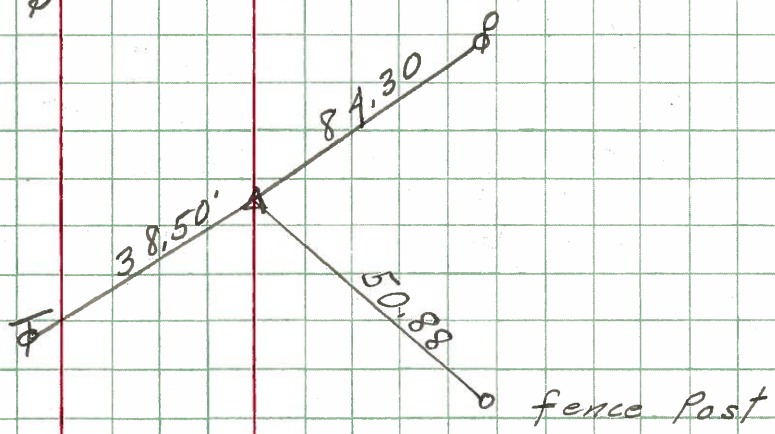
8666



5

73+97.15  
 P.K. Nail on & R/W  
 1 1/2" down  
 Small spk. on top

8665



4

60+97.2  
 R.R. spk. on & R/W  
 4 1/2" down

8664

