

O.D.O.T. DISTRICT 2 SURVEY OFFICE (USE ONLY)

PERSONNEL

REFERENCE NO. 5

SHEET 6 OF 34

NOTES RHOADES  
 H.C. AUBLE  
 R.C. ASTON  
NIESE

DATE 11/6/23  
 WEATHER SUNNY/WINDY  
 TEMP. 48°

ROUTE SR 231  
 COUNTY SENECA  
 TOWNSHIP EDEN  
 SECTION 30

DWG BY RHOADES PID 95780

T 1 N R 15 E

TYPE MONUMENT MAG/WASHER

ON SURFACE - ~~BELOW~~ ON

OFFSET  $\odot$  PAVEMENT 1.7' ~~ET~~ : RT

8.5' TO RT EDGE PAVEMENT

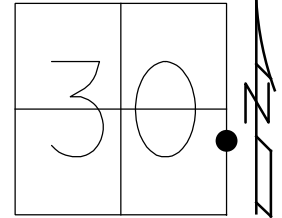
STATION: 74+14

HORZ.DATUM: NAD83(2011)

GEOID: NAVD88 2018

GRID: NORTHING: 491371.373

EASTING: 1783524.511



SET SHI  
22" ELM



51.10'

FD SHI  
STUB



38.57'

68.03'

SET MAG  
8"



$\odot$  SR 231

41.08'



RECORD: P.I.  
 STA. 73+97.15  
 1940 PLAN  
 SM.SPIKE TOP  
 P.K.NAIL ON  $\odot$  R/W  
 1 1/2" DOWN  
 SET P.K./WASHER  
 8/21/97  
 FD P.K./WASHER  
 8/16/04, MC  
 FD P.K./WASHER  
 REF5  
 3/26/19,  
 8/16/19, JFO  
 FD P.K./WASHER  
 REF5  
 4/18/23, TDN  
 SET MAG/WASHER  
 11/6/23, DSA

O.D.O.T. DISTRICT 2 SURVEY OFFICE (USE ONLY)

PERSONNEL \_\_\_\_\_ REFERENCE NO. 5 SHEET 6 OF 33  
 NOTES BARNHISEL DATE 6/12/97 ROUTE SR 231  
 H.C. CANTERBURY WEATHER SUNNY COUNTY SENECA  
 R.C. ROUSOS TEMP. 75° TOWNSHIP EDEN  
 DWG BY NIESE PID 107060 SECTION 30  
 T 1 N R 15 E

TYPE MONUMENT SM.R.R.SPIKE

ON SURFACE - ~~BELOW~~ ON

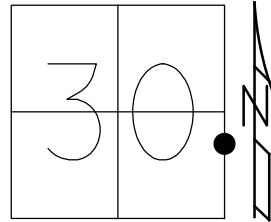
OFFSET 8.5' TO RT PAVEMENT 1.7' ~~LT~~ : RT

8.5' TO RT EDGE PAVEMENT

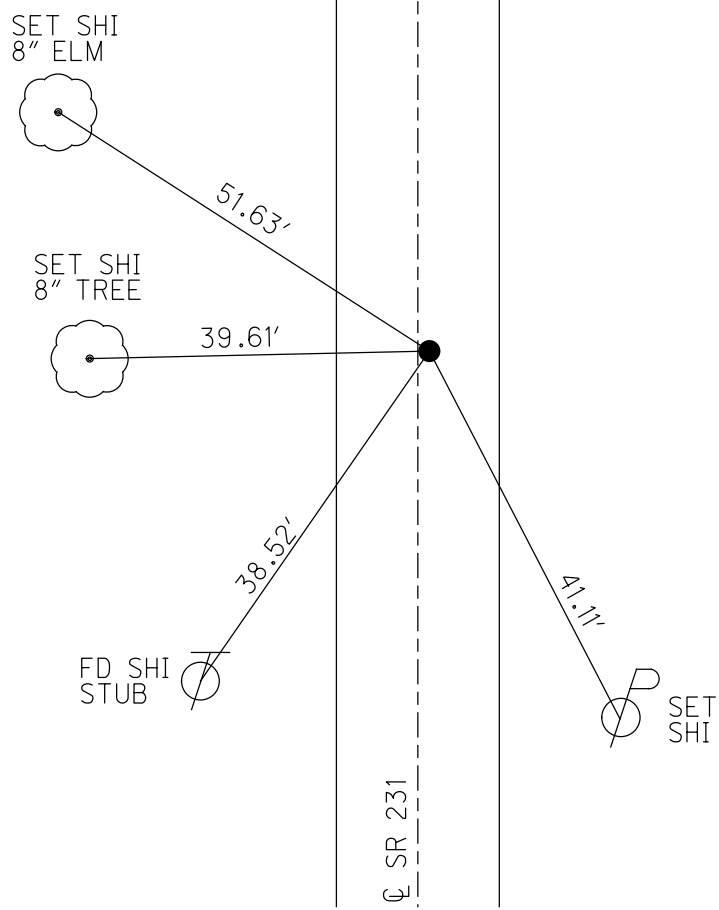
STATION: 74+14

HORIZ.DATUM: NAD83(2011) GEOID: 2012A

GRID: NORTHING: 491371.373 EASTING: 1783524.511



RECORD:  
 73+97.15  
 PK NAIL ON  $\odot$  R/W  
 1 1/2" DOWN  
 SM SPIKE ON TOP  
 SET PK/WASHER  
 8/21/97  
 FD PK/WASHER  
 8/16/04, MC  
 FD PK/WASHER  
 REF5  
 3/26/19, JFO  
 FD  
 8/16/19



# O.D.O.T. DISTRICT 2 SURVEY OFFICE

PERSONNEL

REFERENCE NO. 5

SHEET 6 OF 27

NOTES BARNHISEL

H.C. CANTERBURY

R.C. Roussos

Drawn By Roussos

DATE 6-12-97

WEATHER Sunny

TEMP. +25°

ROUTE SR 231

COUNTY SENECA

TOWNSHIP EDEN

SECTION 30, 29

T. 1 N. R 15 E

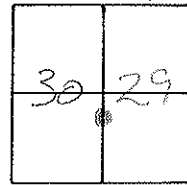
TYPE MONUMENT Sm. RR Spike

ON ~~SURFACE~~ - BELOW 2" Down

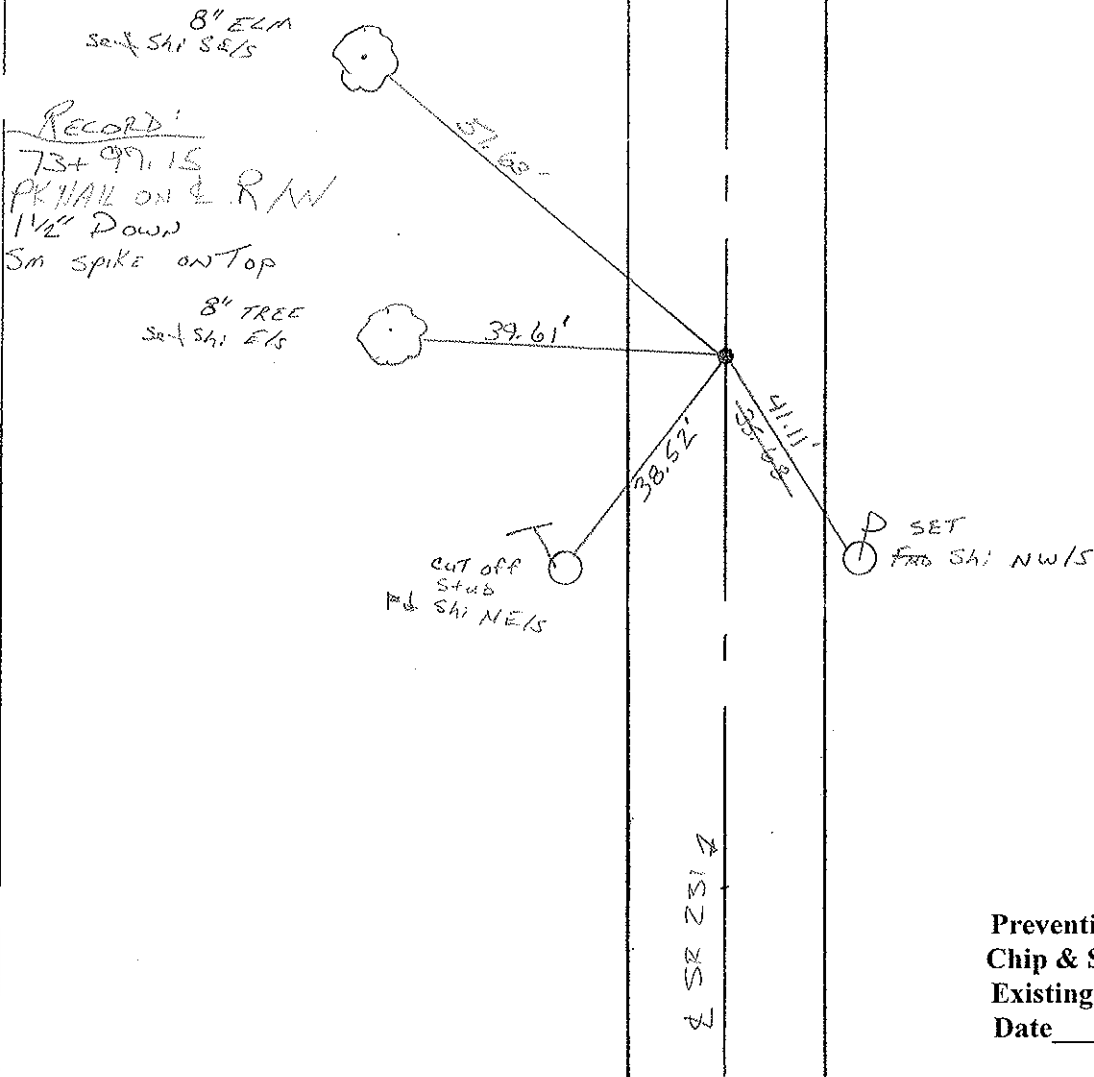
LEFT- 0 PAV'T. - RIGHT 1.7' Rt

8.5 TO RT EDGE PAVEMENT

S.L.M. 2+259.8 M 74+14

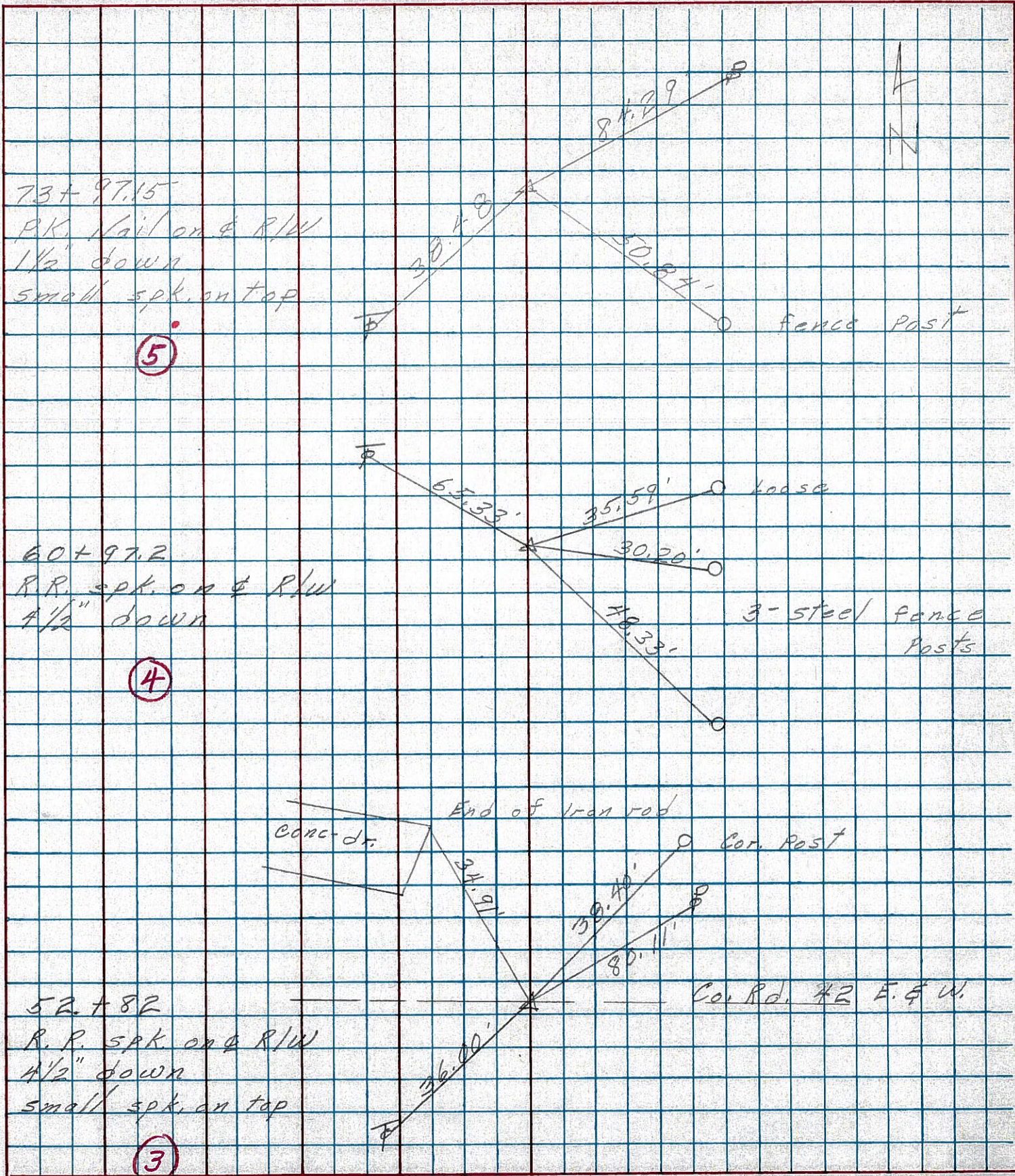


RESET PK Washer  
8-21-97  
MB



Preventive Maintenance  
Chip & Seal 2004  
Existing Point Uncovered  
Date 08/16/04 mc

PERSONNEL \_\_\_\_\_ TITLE \_\_\_\_\_ PERSONNEL \_\_\_\_\_ TITLE \_\_\_\_\_  
 COUNTY Seneca DATE 2-24-75  
 S. R. 231 WEATHER \_\_\_\_\_  
 SEC. B TEMP. 42°  
 DESCRIPTION Wyandot Co. Line to U.S. 224 JOB NO. \_\_\_\_\_  
 LEFT CENTER LINE RIGHT



PERSONNEL	TITLE	PERSONNEL	TITLE	COUNTY	Seneca	DATE	10-29-69
Schneider				S. R.	231	WEATHER	Fair
Mosser				SEC.	B	TEMP.	35°
Potts							

DESCRIPTION Wyandot Co. Line to Tiffin JOB NO. \_\_\_\_\_

⑦

100+00  
R.R. spk. on & R/W  
4 1/2" down

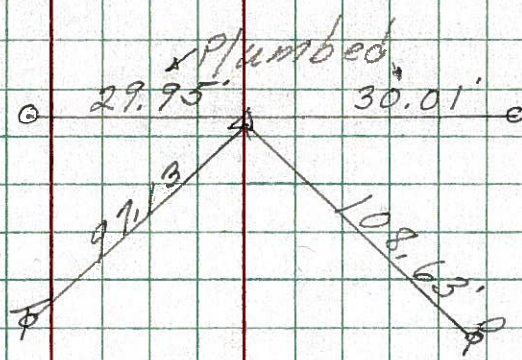
8667

R/W Mon. ○

29.95'

30.01'

R/W Mon. ○

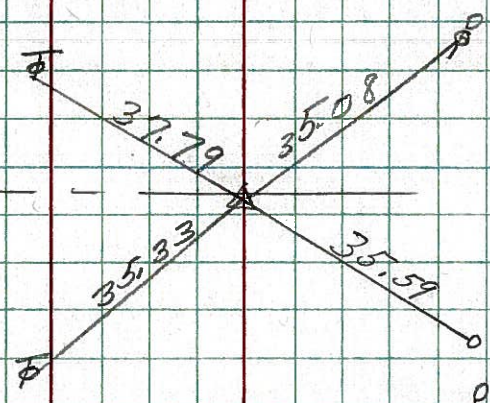


⑥

79+26  
R.R. spk.  
P.K. on top

8666

Co Rd. E. & W.

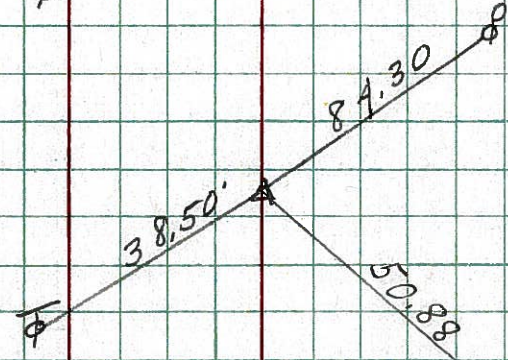


⑤

73+97.15  
P.K. Nail on & R/W  
1 1/2" down  
Small spk. on top

8665

fence Post



④

60+97.2  
R.R. spk. on & R/W  
4 1/2" down

8664

} steel fence posts

fence post

