

O.D.O.T. DISTRICT 2 SURVEY OFFICE (USE ONLY)

PERSONNEL

REFERENCE NO. 6

SHEET 7 OF 34

NOTES RHOADES

DATE 11/6/23

ROUTE SR 231

H.C. AUBLE

WEATHER SUNNY/WINDY

COUNTY SENECA

R.C. ASTON

TEMP. 48°

TOWNSHIP EDEN

NIESE

DWG BY RHOADES

PID 95780

SECTION 30

T 1 N R 15 E

TYPE MONUMENT MAG/WASHER

ON SURFACE - ~~BELOW~~ ON

OFFSET \odot PAVEMENT 3.2' ~~LT~~ : RT

8.1' TO RT EDGE PAVEMENT

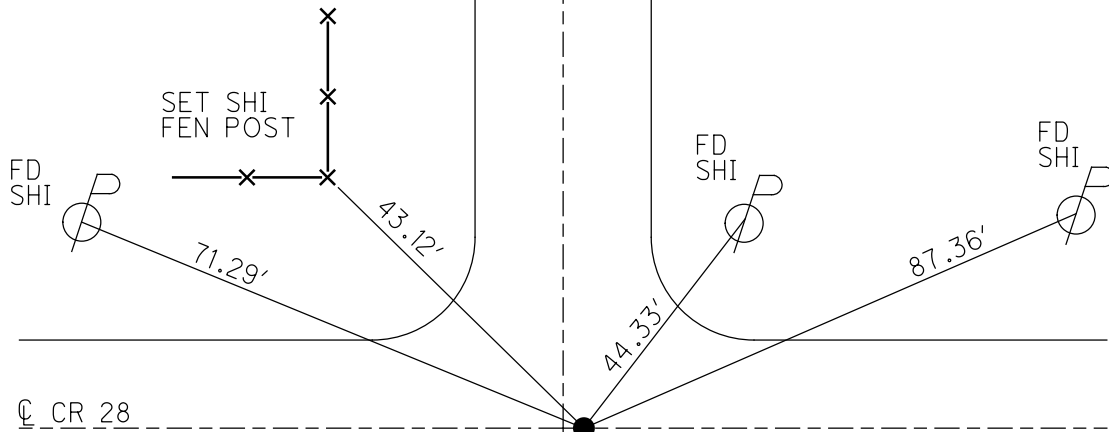
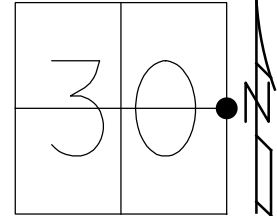
STATION: 79+45

HORIZ.DATUM: NAD83(2011)

GEOID: NAVD88 2018

GRID: NORTHING: 491901.446

EASTING: 1783531.441



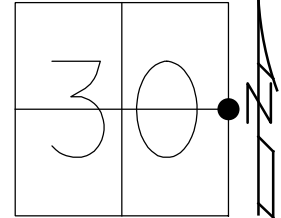
RECORD:
 STA. 79+26
 FD P.K.NAIL
 ATOP R.R.SPIKE
 FD R.R.SPIKE
 6/19/97, MB
 SET P.K./WASHER
 8/21/97
 FD P.K./WASHER
 8/16/04, MC
 FD P.K./WASHER
 REF6
 3/26/19
 8/16/19, JFO
 FD P.K.NAIL
 REF6
 SET MAG/WASHER
 11/6/23, DSA

\odot SR 231

O.D.O.T. DISTRICT 2 SURVEY OFFICE (USE ONLY)

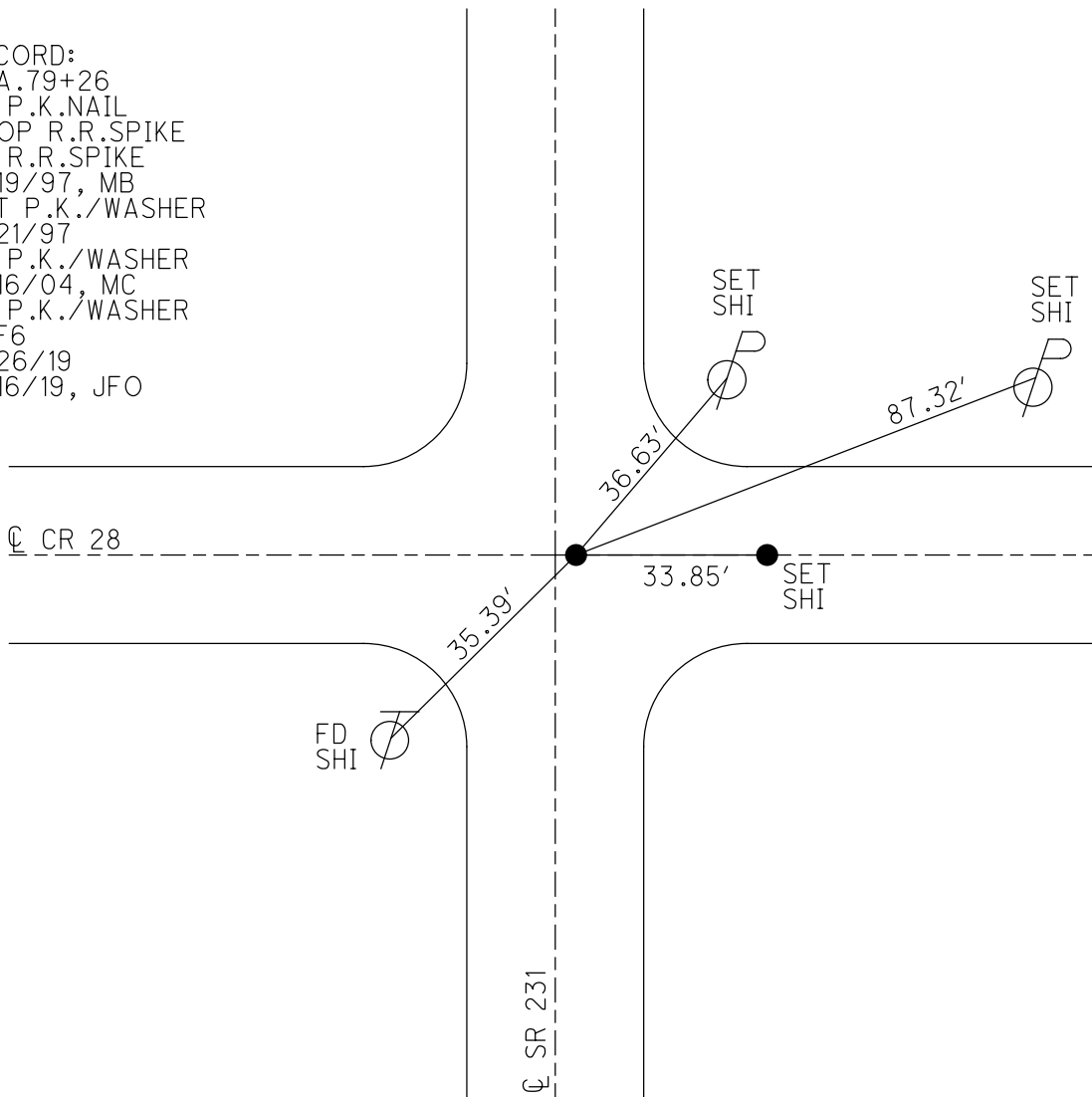
PERSONNEL _____ REFERENCE NO. 6 SHEET 7 OF 33
 NOTES BARNHISEL DATE 6/19/97 ROUTE SR 231
 H.C. CANTERBURY WEATHER SUNNY COUNTY SENECA
 R.C. ROUSOS TEMP. 75° TOWNSHIP EDEN
 WEAVER SECTION 30
 DWG BY NIESE PID 107060 T 1 N R 15 E

TYPE MONUMENT R.R.SPIKE
 ON SURFACE - ~~BELOW~~ ON _____
 OFFSET \odot PAVEMENT 3.2' ~~RT~~ : RT
8.1' TO RT EDGE PAVEMENT
 STATION: 79+45



HORIZ.DATUM: NAD83(2011) GEOID: 2012A
 GRID: NORTHING: 491901.446 EASTING: 1783531.441

RECORD:
 STA.79+26
 FD P.K.NAIL
 ATOP R.R.SPIKE
 FD R.R.SPIKE
 6/19/97, MB
 SET P.K./WASHER
 8/21/97
 FD P.K./WASHER
 8/16/04, MC
 FD P.K./WASHER
 REF6
 3/26/19
 8/16/19, JFO



O.D.O.T. DISTRICT 2 SURVEY OFFICE

PERSONNEL

REFERENCE NO. 6

SHEET 7 OF 27

NOTES BARNHISEL

H.C. CANTERBURY

R.C. ROUSOS

WEAVER

Drawn By ROUSOS

DATE 6-19-99

WEATHER SUNNY

TEMP. +70°

ROUTE SR 231

COUNTY SENECA

TOWNSHIP EDEN

SECTION 30, 29

T. NR 16 E

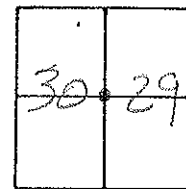
TYPE MONUMENT RR Spike

ON SURFACE - BELOW SURFACE

LEFT - C PAV'T. - RIGHT 3.2' RT

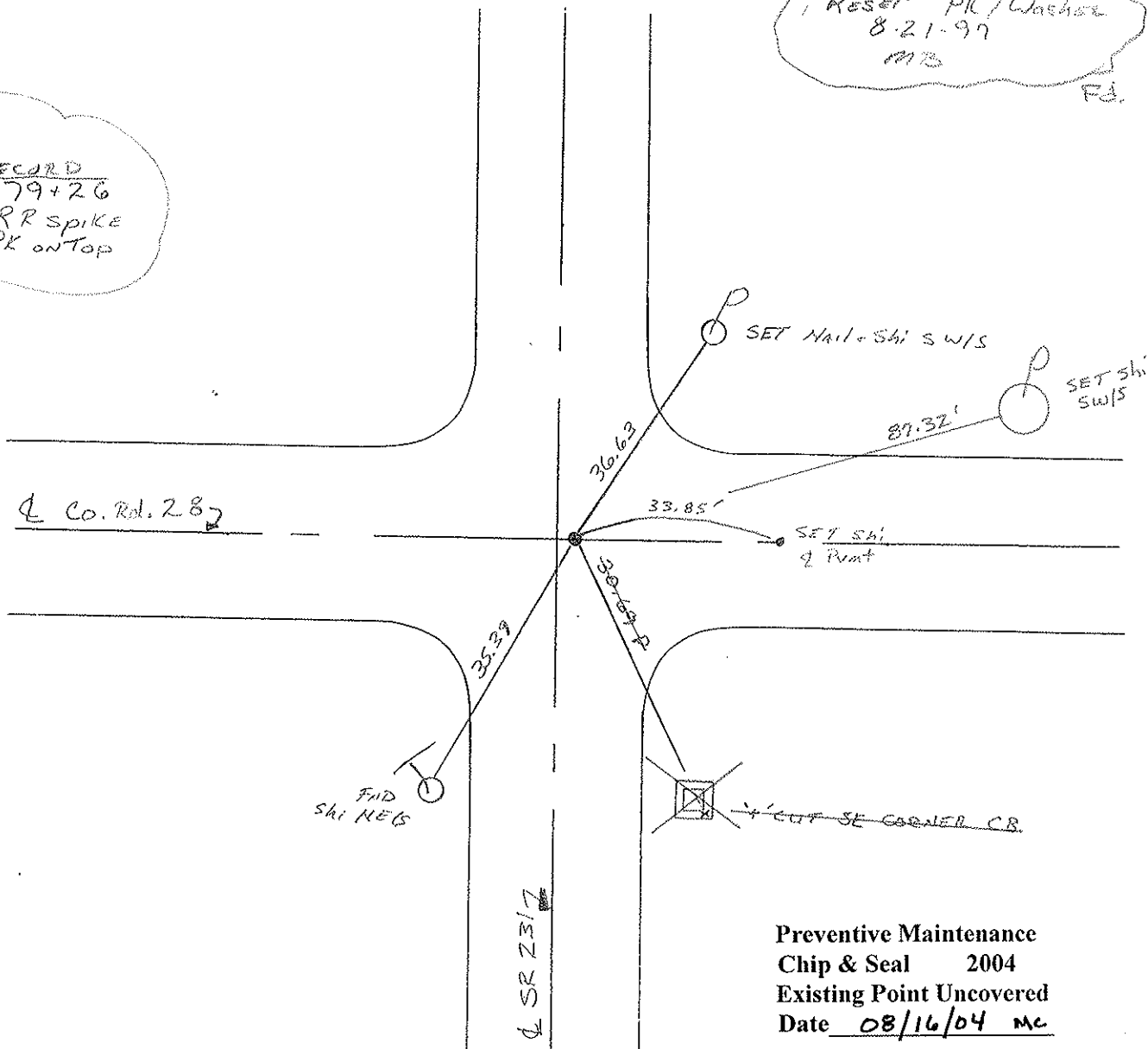
8.1 TO RT EDGE PAVEMENT

S.L.M. 2+421.6 M 79+45



Reset PK/Washer
8-21-99
MB
FD

RECORD
79+26
RR SPIKE
PK ON TOP



Preventive Maintenance
Chip & Seal 2004
Existing Point Uncovered
Date 08/16/04 MC

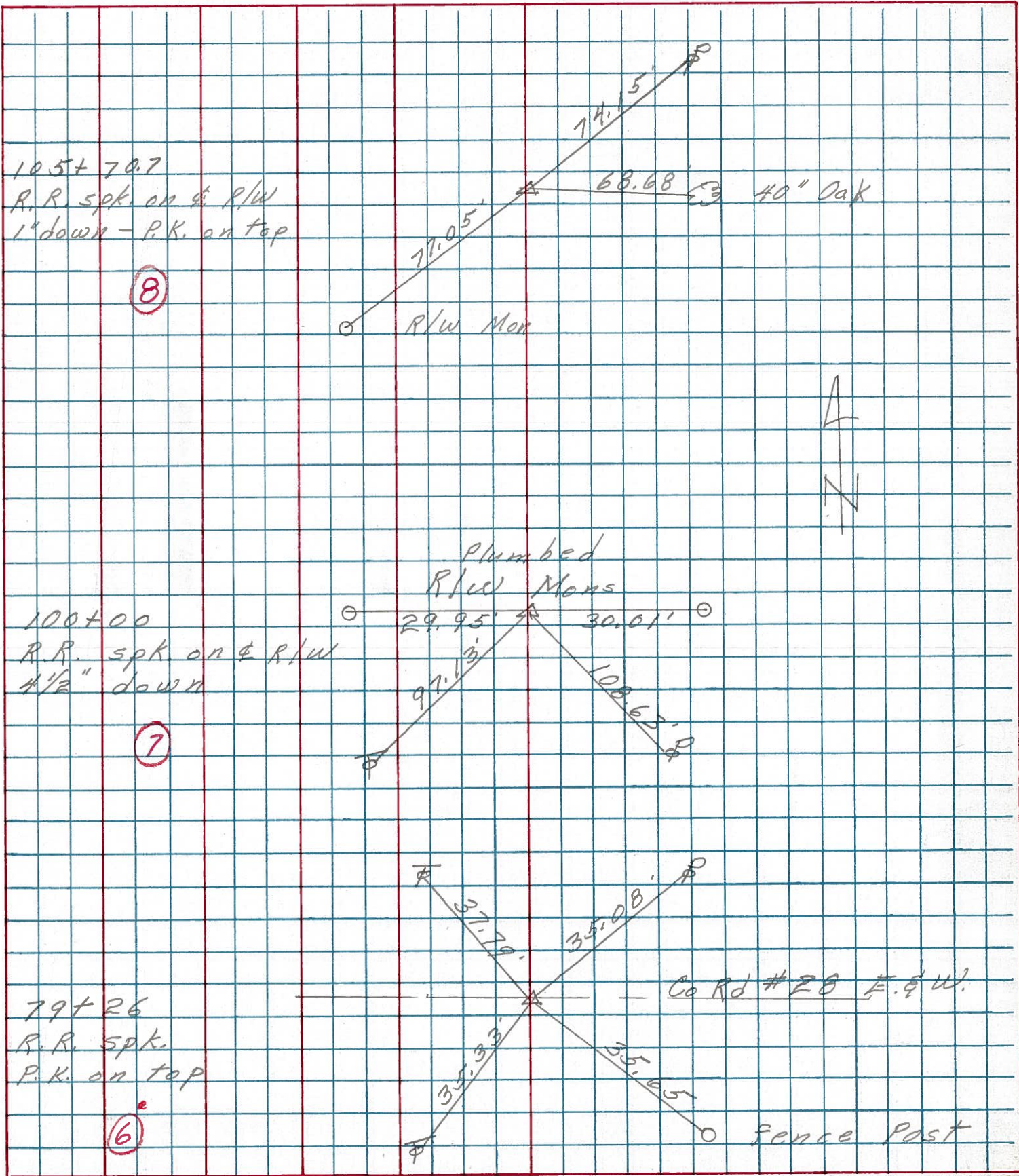
PERSONNEL TITLE PERSONNEL TITLE

COUNTY Seneca DATE 2-3-75

S. R. 231 WEATHER

SEC. B TEMP. 39°

DESCRIPTION Wyandot Co. Line to U.S. 224 JOB NO.



PERSONNEL	TITLE	PERSONNEL	TITLE	COUNTY	Seneca	DATE	10-29-69
Schneider				S. R.	231	WEATHER	Fair
Mosser				SEC.	B	TEMP.	35°
Potts							

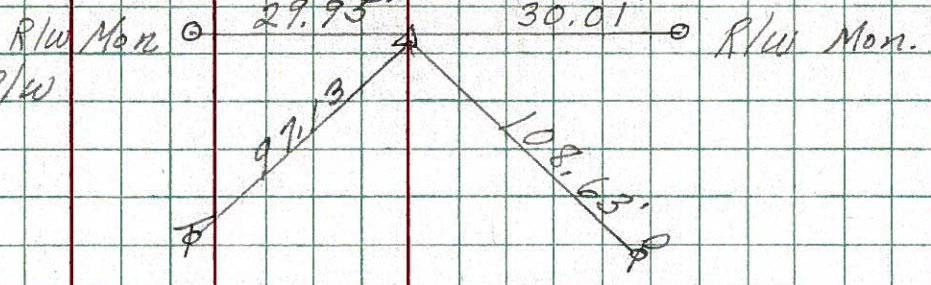
DESCRIPTION Wyandot Co. Line to Tiffin JOB NO. _____

LEFT CENTER LINE RIGHT

7

100+00
R.R. spk. on & R/W
4 1/2" down

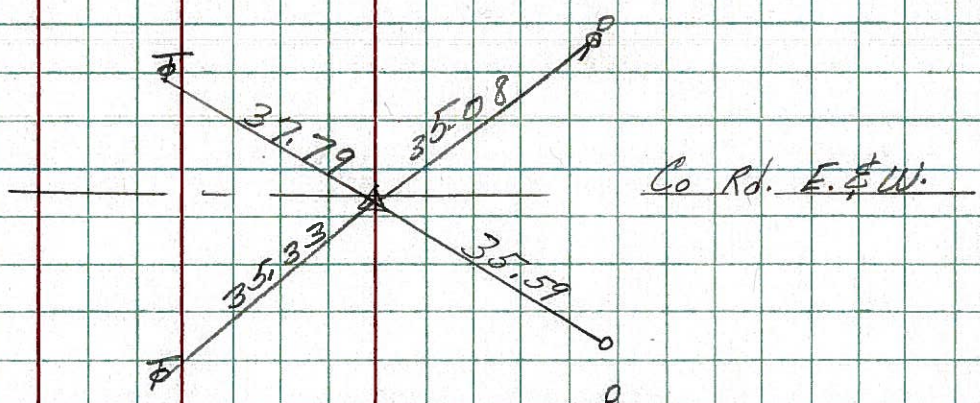
8667



6

79+26
R.R. spk.
P.K. on top

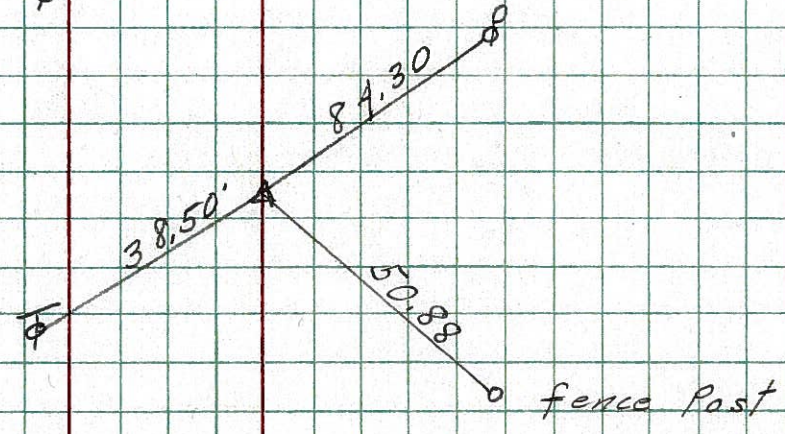
8666



5

73+97.15
P.K. Nail on & R/W
1 1/2" down
Small spk. on top

8665



4

60+97.2
R.R. spk. on & R/W
4 1/2" down

8664

