

O.D.O.T. DISTRICT 2 SURVEY OFFICE (USE ONLY)

PERSONNEL

REFERENCE NO. 7

SHEET 8 OF 34

NOTES RHOADES

DATE 11/6/23

ROUTE SR 231

H.C. AUBLE

WEATHER SUNNY

COUNTY SENECA

R.C. ASTON

TEMP. 48°

TOWNSHIP EDEN

NIESE

SECTION 30

DWG BY RHOADES

PID 95780

T 1 N R 15 E

TYPE MONUMENT MAG/WASHER

ON SURFACE - ~~BELOW~~ ON

OFFSET 7.0'  $\odot$  PAVEMENT 2.5' LT : ~~RT~~

7.0' TO LT EDGE PAVEMENT

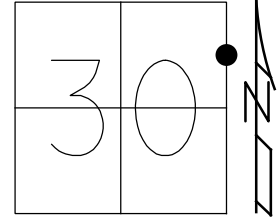
STATION: 100+28

HORZ. DATUM: NAD83(2011)

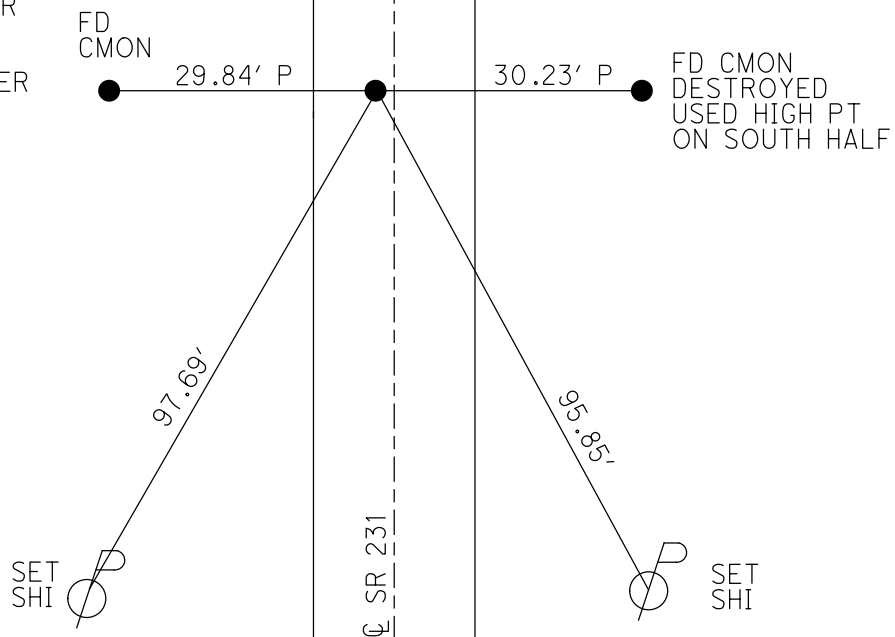
GEOID: NAVD88 2018

GRID: NORTHING: 493975.039

EASTING: 1783556.754



RECORD: P.I.  
 STA. 100+00  
 FD R.R. SPIKE  
 ON  $\odot$  RW  
 4 1/2" DOWN  
 FD R.R. SPIKE  
 4" DOWN  
 6/19/97, MB  
 SET P.K./WASHER  
 8/21/97, MB  
 FD P.K./WASHER  
 8/16/04, MC  
 FD P.K./WASHER  
 REF 7  
 3/26/19  
 8/16/19, JFO  
 FD P.K./WASHER  
 REF 7  
 4/18/23, TDN  
 SET MAG/WASHER  
 11/6/23, DSA



O.D.O.T. DISTRICT 2 SURVEY OFFICE (USE ONLY)

PERSONNEL \_\_\_\_\_ REFERENCE NO. 7 SHEET 8 OF 33  
 NOTES BARNHISEL DATE 6/19/97 ROUTE SR 231  
 H.C. CANTERBURY WEATHER SUNNY COUNTY SENECA  
 R.C. ROUSOS TEMP. 70° TOWNSHIP EDEN  
 \_\_\_\_\_ WEAVER SECTION 30  
 DWG BY NIESE PID 107060 T 1 N R 15 E

TYPE MONUMENT R.R.SPIKE

~~ON SURFACE~~ - BELOW 4"

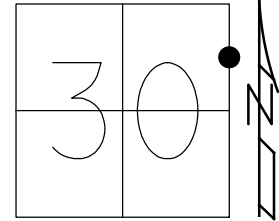
OFFSET 7.0'  $\odot$  PAVEMENT 2.5' LT : ~~RT~~

7.0' TO LT EDGE PAVEMENT

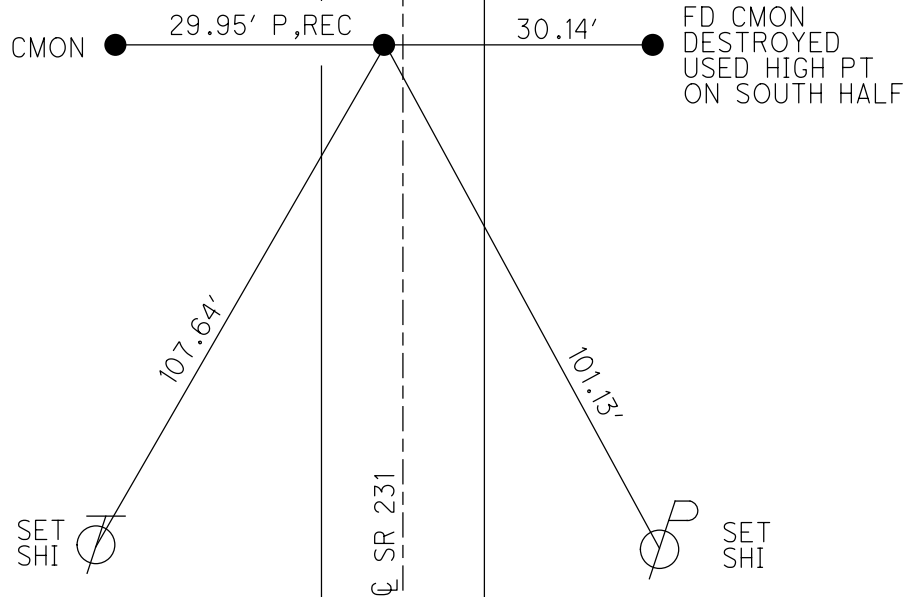
STATION: 100+28

HORZ.DATUM: NAD83(2011) GEOID: 2012A

GRID: NORTHING: 493975.039 EASTING: 1783556.754



RECORD:  
 STA.100+00  
 FD R.R.SPIKE  
 ON  $\odot$  RW  
 4 1/2" DOWN  
 FD R.R.SPIKE  
 4" DOWN  
 6/19/97, MB  
 SET P.K./WASHER  
 8/21/97, MB  
 FD P.K./WASHER  
 8/16/04, MC  
 FD P.K./WASHER  
 REF7  
 3/26/19  
 8/16/19, JFO



# O.D.O.T. DISTRICT 2 SURVEY OFFICE

PERSONNEL

REFERENCE NO. 7

SHEET 8 OF 27

NOTES BARNHISEL

H.C. CANTONBURY

R.C. ROUSEL

WEAVER

Drawn By Rousas

DATE 6-19-97

WEATHER SUNNY

TEMP. +70°

ROUTE SR 231

COUNTY SENECA

TOWNSHIP EDEN

SECTION 30, 29

T. N R. E

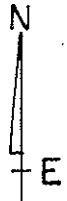
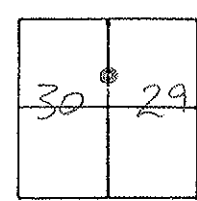
TYPE MONUMENT R.R. SPIKE

ON SURFACE - BELOW 4"

LEFT - C PAV'T. - RIGHT 2.5 L+

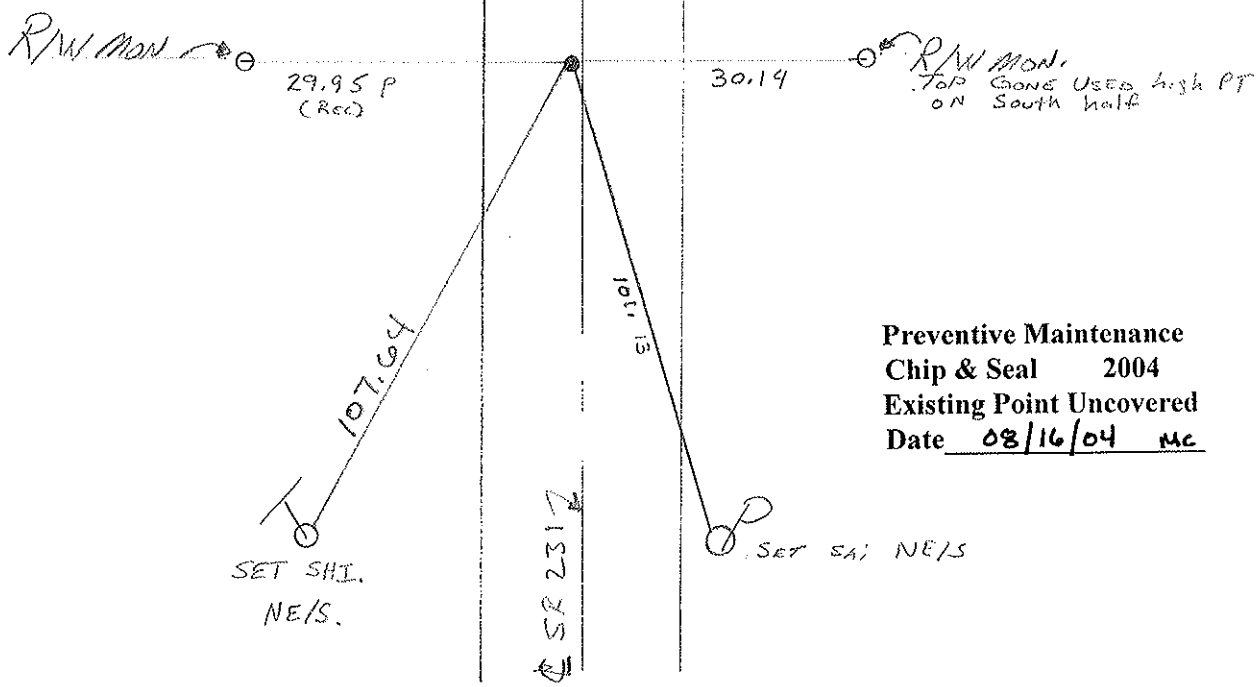
7.0 TO LT EDGE PAVEMENT

S.L.M. 3+056.4 M 100+28



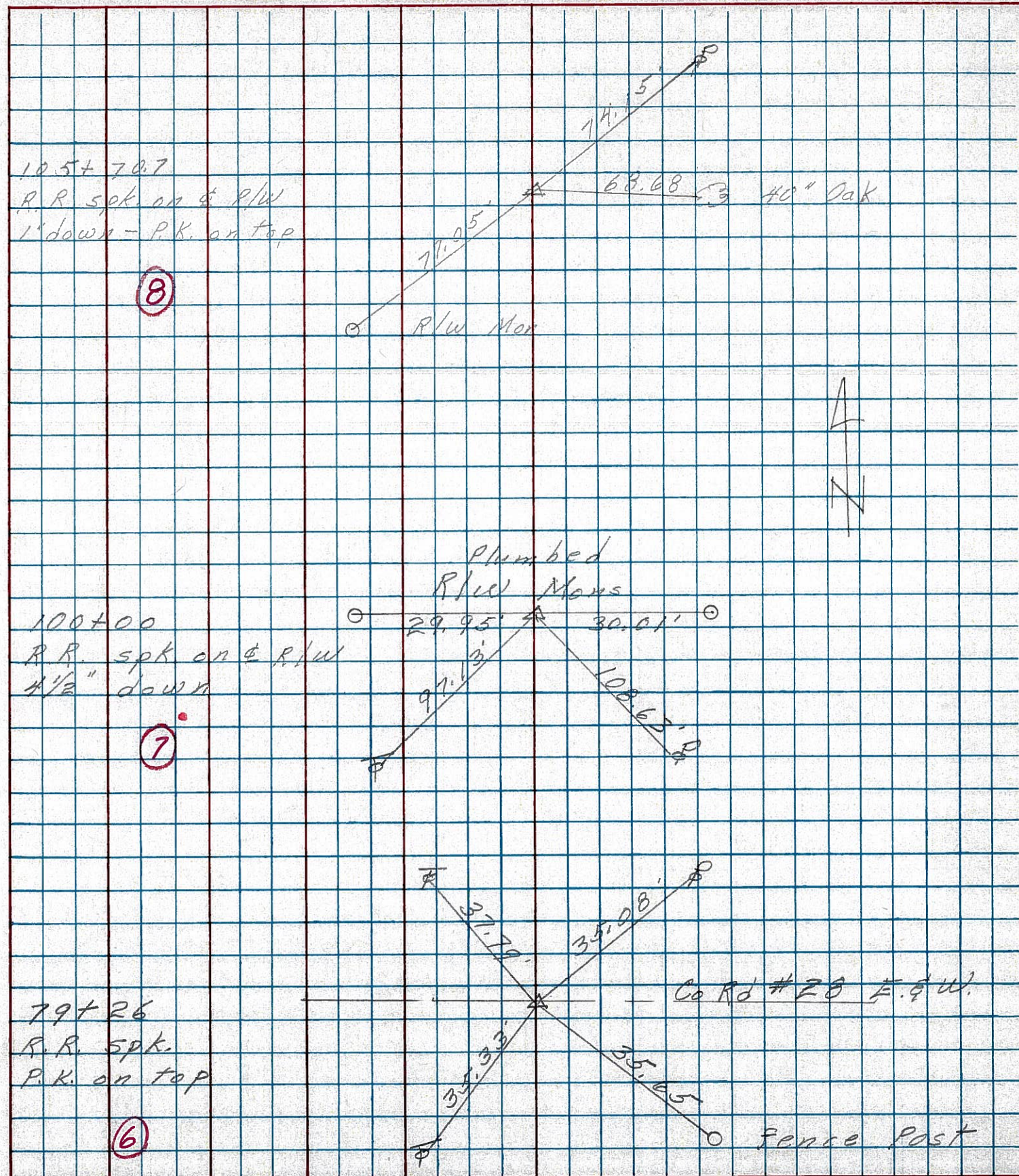
RESET PK WASHER  
 8.21.97  
 MS

RECORD  
 100+00  
 RR Spike on & RW  
 4 1/2" Down



Preventive Maintenance  
 Chip & Seal 2004  
 Existing Point Uncovered  
 Date 08/16/04 MC

PERSONNEL \_\_\_\_\_ TITLE \_\_\_\_\_ PERSONNEL \_\_\_\_\_ TITLE \_\_\_\_\_  
 COUNTY Seneca DATE 3-1-75  
 S. R. 231 WEATHER \_\_\_\_\_  
 SEC. B TEMP. 39°  
 DESCRIPTION Wyandot Co. Line to U.S. 224 JOB NO. \_\_\_\_\_  
 LEFT CENTER LINE RIGHT

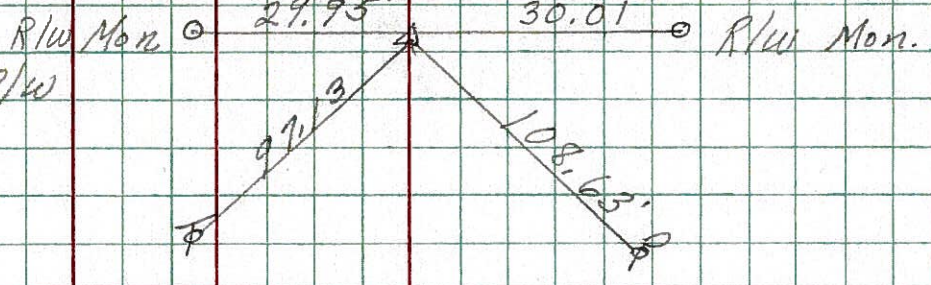


PERSONNEL TITLE PERSONNEL TITLE COUNTY Seneca DATE 10-29-69  
Schneider \_\_\_\_\_ \_\_\_\_\_ \_\_\_\_\_  
Mosser \_\_\_\_\_ \_\_\_\_\_ \_\_\_\_\_ S. R. 231 WEATHER Fair  
Potts \_\_\_\_\_ \_\_\_\_\_ \_\_\_\_\_ SEC. B TEMP. 35°

DESCRIPTION Wyandot Co. Line to Tiffin JOB NO. \_\_\_\_\_  
 LEFT CENTER LINE RIGHT

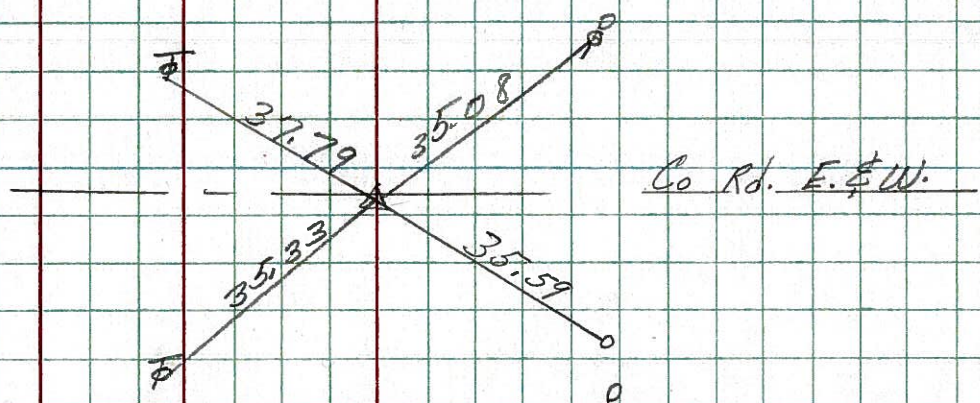
⑦

100+00  
 R.R. spk. on  $\frac{1}{2}$  R/W  
 4 1/2" down  
 8667



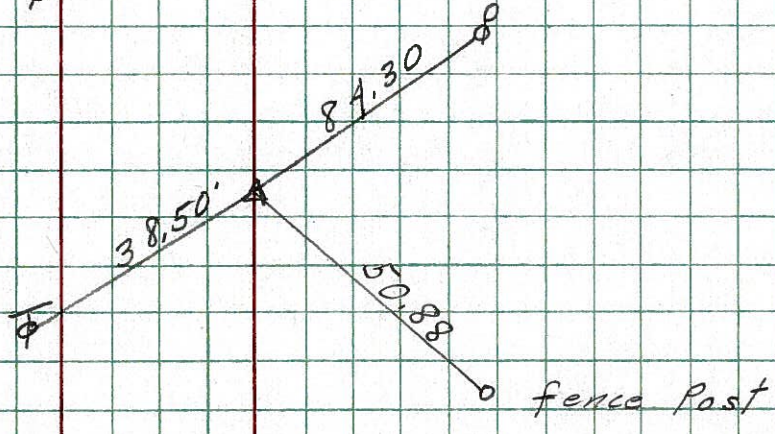
⑥

79+26  
 R.R. spk.  
 P.K. on top  
 8666



⑤

73+97.15  
 P.K. Nail on  $\frac{1}{2}$  R/W  
 1 1/2" down  
 Small spk. on top  
 8665



④

60+97.2  
 R.R. spk. on  $\frac{1}{2}$  R/W  
 4 1/2" down  
 8664

