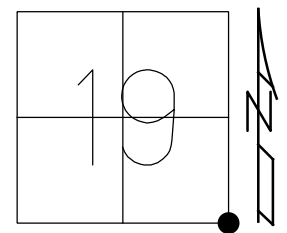


O.D.O.T. DISTRICT 2 SURVEY OFFICE (USE ONLY)

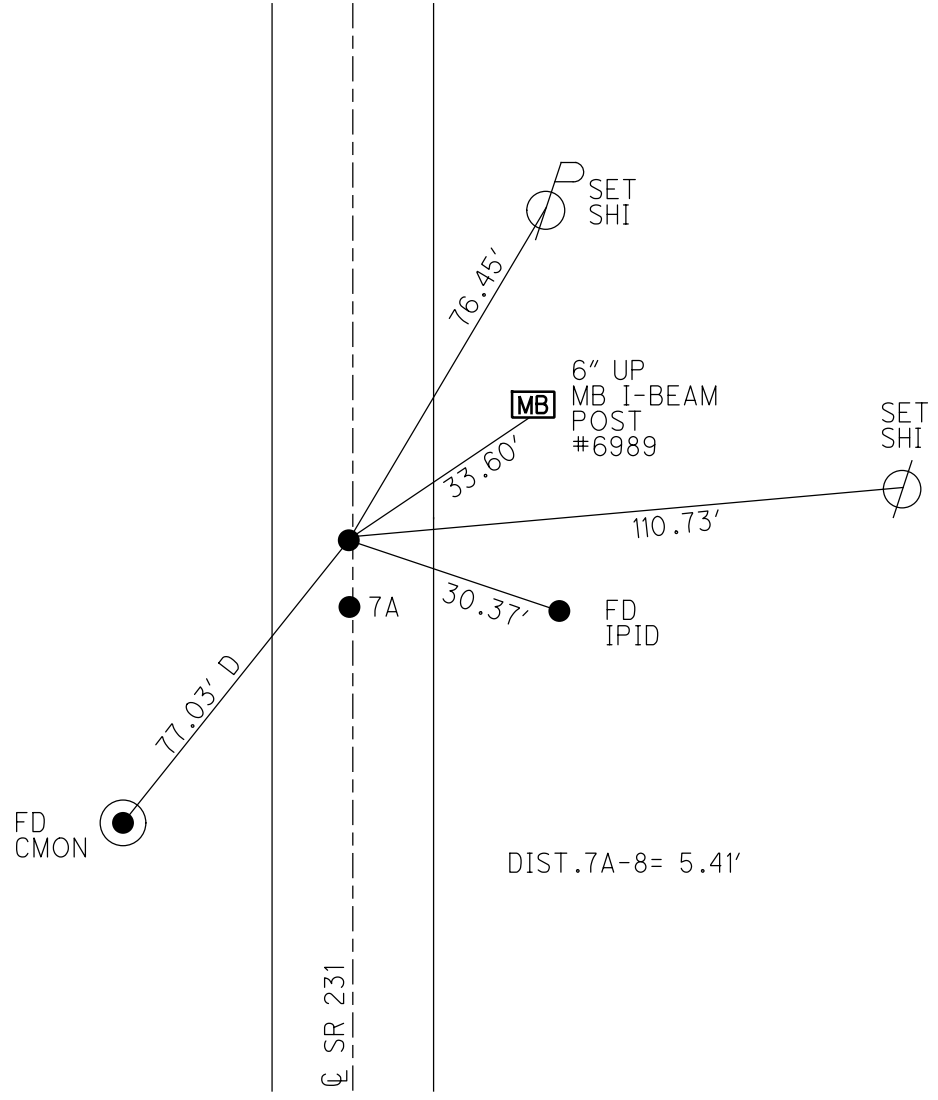
PERSONNEL _____ REFERENCE NO. 8 SHEET 9 OF 34
 NOTES RHOADES DATE 11/6/23 ROUTE SR 231
 H.C. AUBLE WEATHER SUNNY/WINDY COUNTY SENECA
 R.C. ASTON TEMP. 48° TOWNSHIP EDEN
 NIESE SECTION 19
 DWG BY RHOADES PID 95780 T 1 N R 15 E

TYPE MONUMENT MAG/WASHER
~~ON SURFACE~~ - BELOW ON
 OFFSET 0.5' LT : ~~RT~~
10.0' TO LT EDGE PAVEMENT
 STATION: 106+00



HORZ. DATUM: NAD83(2011) GEOID: NAVD88 2018
 GRID: NORTHING: 494546.041 EASTING: 1783563.831

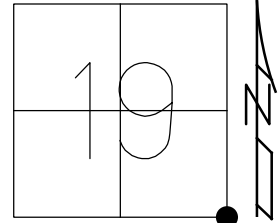
RECORD:
 STA. 105+70.7
 FD P.K. NAIL
 ATOP R.R. SPIKE
 ON CL R/W
 1" DOWN
 FD R.R. SPIKE
 2" DOWN
 6/19/97, MB
 SET P.K./WASHER
 8/21/97, MB
 FD P.K./WASHER
 8/16/04, MC
 FD P.K./WASHER
 REF8
 3/26/19
 8/16/19, JFO
 FD P.K./WASHER
 REF8
 4/18/23, TDN
 SET MAG/WASHER
 11/6/23, DSA



O.D.O.T. DISTRICT 2 SURVEY OFFICE (USE ONLY)

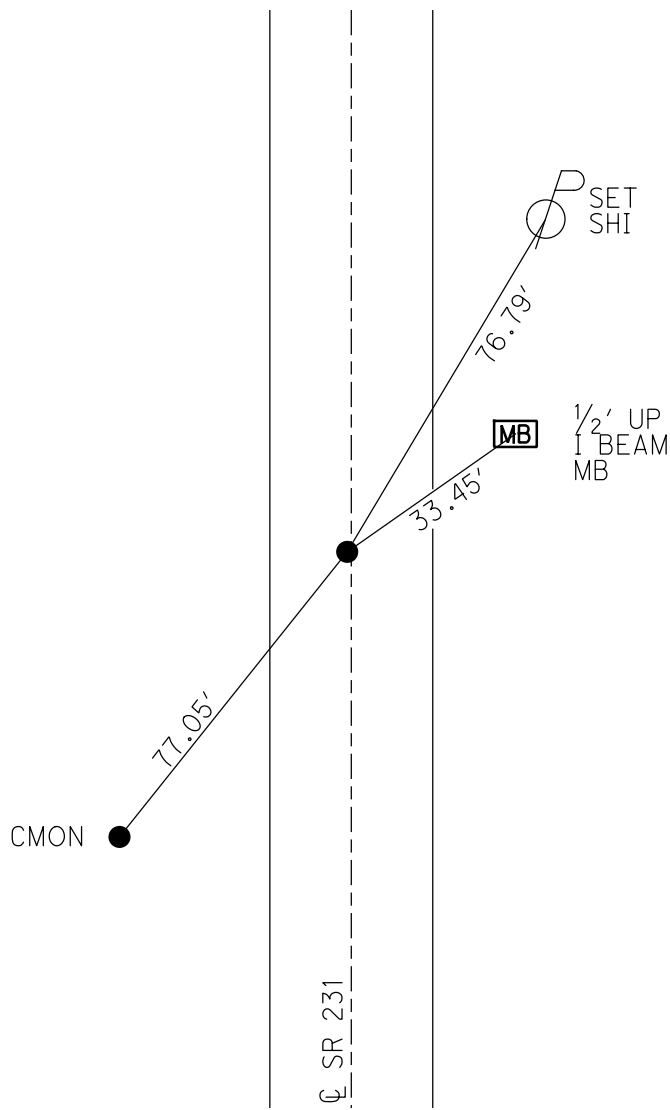
PERSONNEL _____ REFERENCE NO. 8 SHEET 9 OF 33
 NOTES BARNHEISEL DATE 6/19/97 ROUTE SR 231
 H.C. CANTERBURY WEATHER SUNNY COUNTY SENECA
 R.C. ROUSOS TEMP. 70° TOWNSHIP EDEN
 WEAVER SECTION 19
 DWG BY NIESE PID 107060 T 1 N R 15 E

TYPE MONUMENT R.R.SPIKE
~~ON SURFACE~~ - BELOW 2"
 OFFSET \odot PAVEMENT 0.5' LT : ~~RT~~
10.0' TO LT EDGE PAVEMENT
 STATION: 106+00



HORIZ. DATUM: NAD83(2011) GEOID: 2012A
 GRID: NORTHING: 494546.041 EASTING: 1783563.831

RECORD:
 STA. 105+70.7
 FD P.K.NAIL
 ATOP R.R.SPIKE
 ON \odot R/W
 1" DOWN
 FD R.R.SPIKE
 2" DOWN
 6/19/97, MB
 SET P.K./WASHER
 8/21/97, MB
 FD P.K./WASHER
 8/16/04, MC
 FD P.K./WASHER
 REF8
 3/26/19
 8/16/19, JFO



O.D.O.T. DISTRICT 2 SURVEY OFFICE

PERSONNEL

REFERENCE NO. 8

SHEET 9 OF 27

NOTES BARNHISEL

H.C. CANTERBURY

R.C. ROUSOR

M WEAVER

Drawn By ROUSOR

DATE 6-19-97

WEATHER SUNNY

TEMP. +70°

ROUTE SR 281

COUNTY SENECA

TOWNSHIP EDEN

SECTION 19, 20

T. L. N. R. 15 E

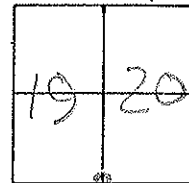
TYPE MONUMENT RR SPIKE

ON SURFACE - BELOW 2"

LEFT - ~~PAV'T.~~ - RIGHT 0.5

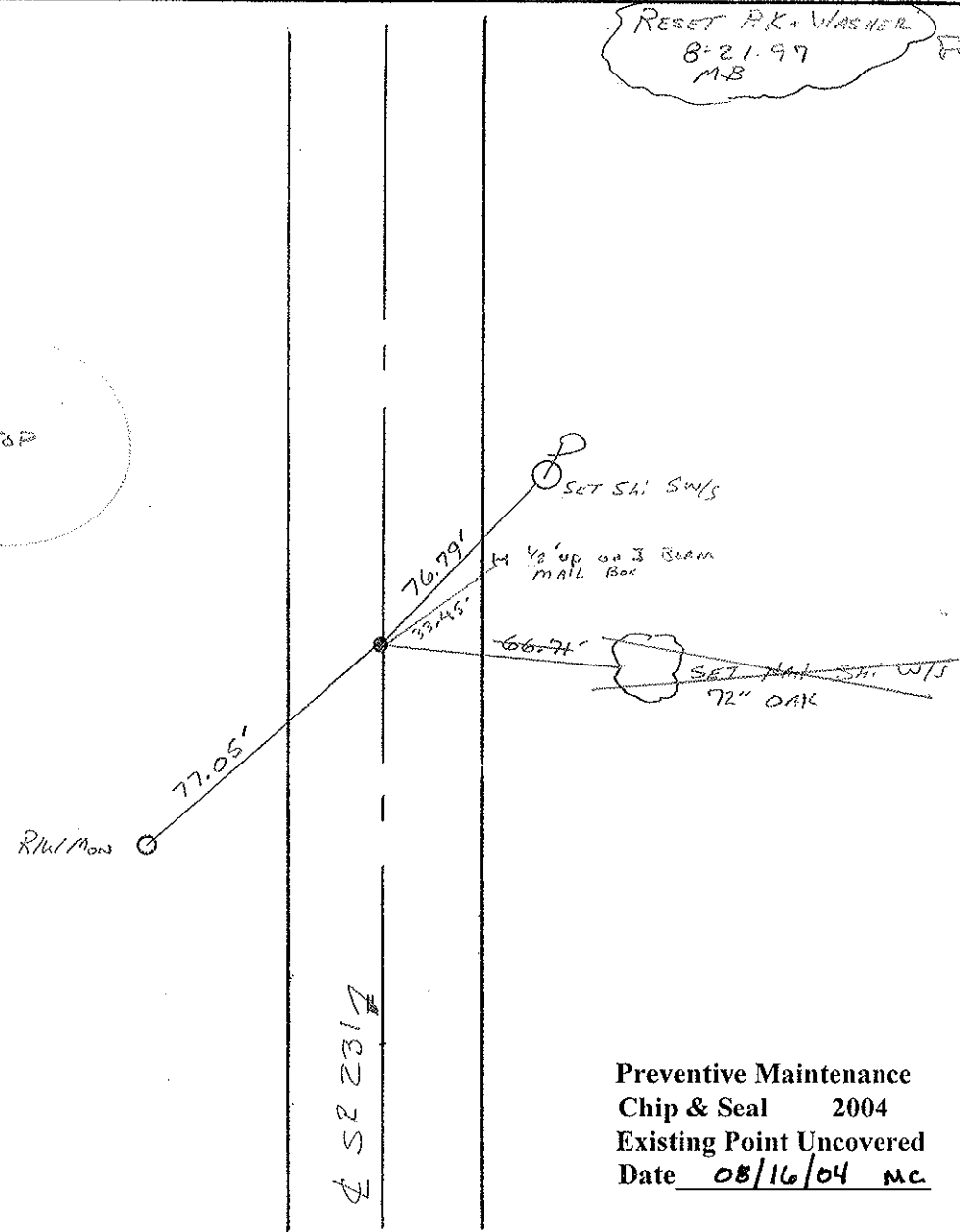
0.0 TO LT EDGE PAVEMENT

S.L.M. 3+230.8 m 106+00



RESET P.K. WASHNELL
8-21-97
MB

RECORD
105+70.7
RR SPK ON & R/W
1" DOWN - P.K. ON TOP



SR 281

Preventive Maintenance
Chip & Seal 2004
Existing Point Uncovered
Date 08/16/04 mc

PERSONNEL TITLE PERSONNEL TITLE

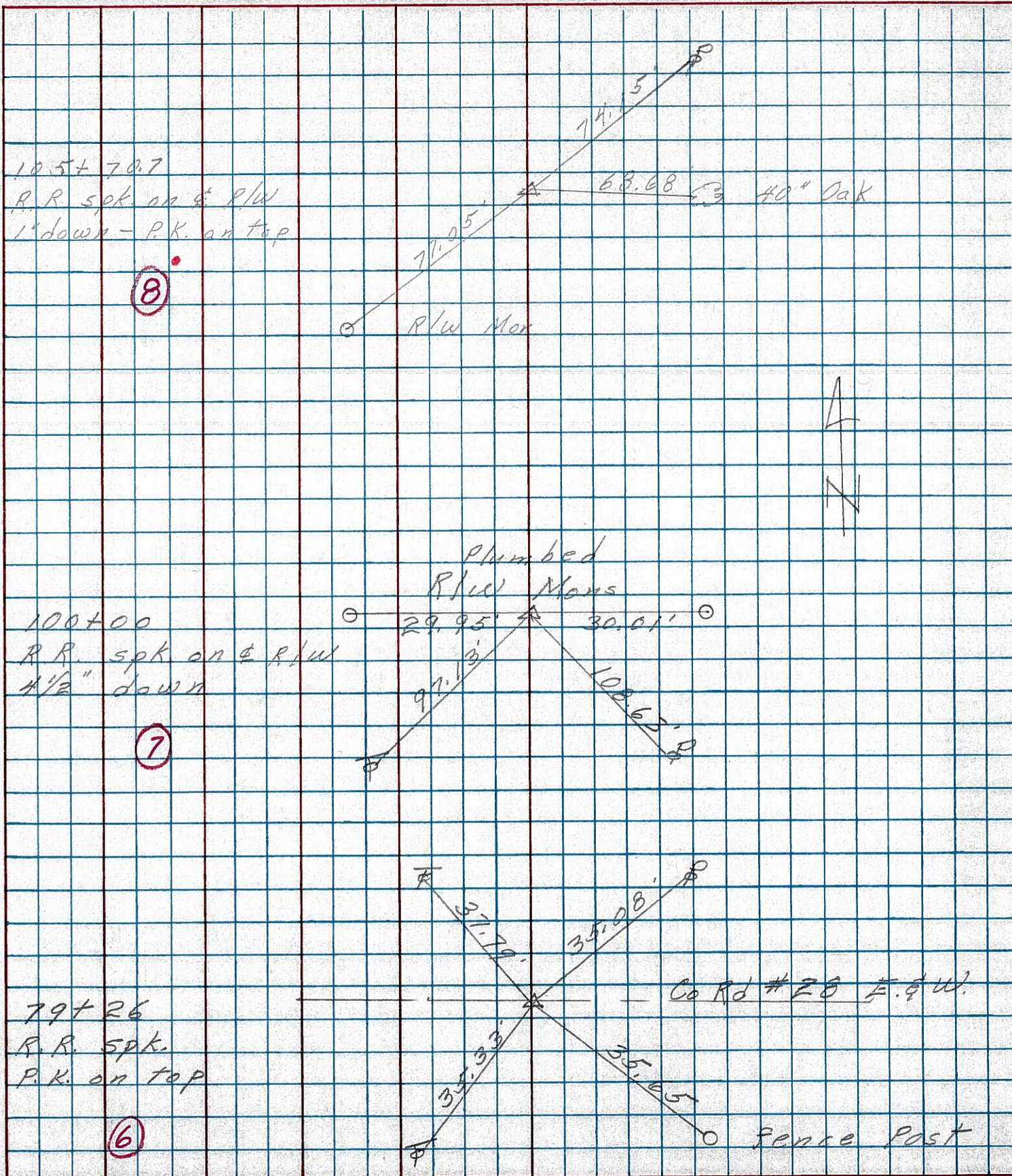
COUNTY Seneca DATE 3-1-75

S. R. 231 WEATHER

SEC. B TEMP. 39°

DESCRIPTION Wyandot Co. Line to U.S. 224 JOB NO.

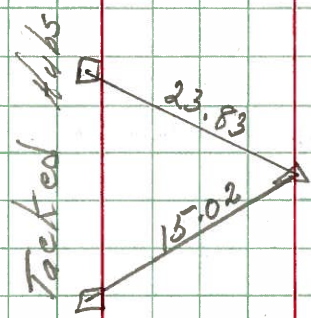
LEFT CENTER LINE RIGHT



PERSONNEL	TITLE	PERSONNEL	TITLE	COUNTY	DATE
Schneider				Seneca	10-29-69
Mosser				S. R. 231	WEATHER Fair
Potts				SEC. B	TEMP. 40'
DESCRIPTION: Wyandot Co. Line to Tiffin				JOB NO.	

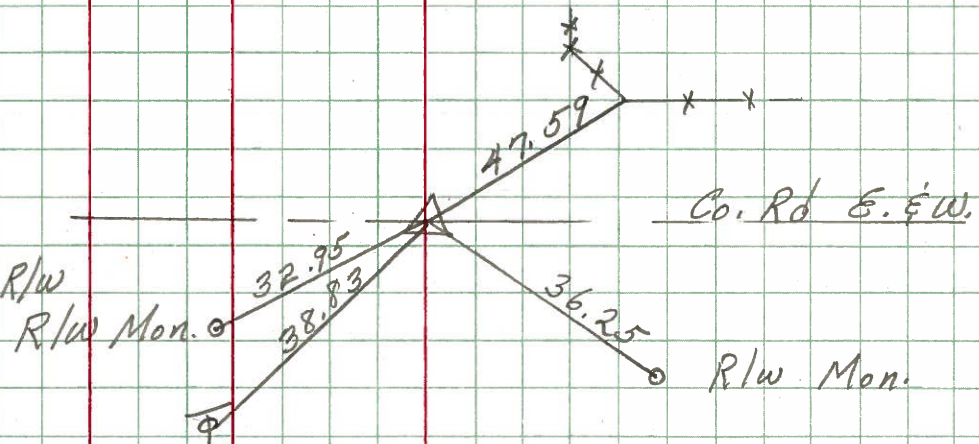
11

167+64.6
did not find
8671



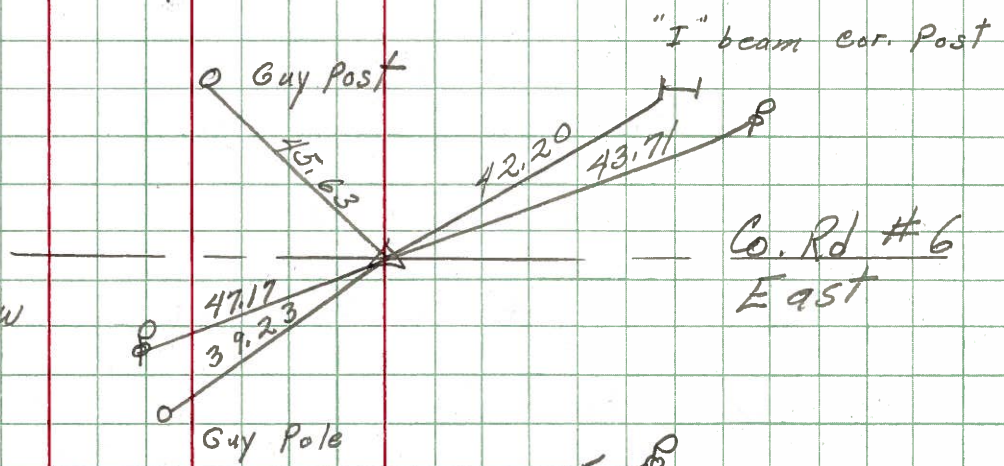
10

158+64.6
P.K. Nail on E R/W
2" down
R/W Mon. 8670



9

132+17.8
Iron Pin on E R/W
8669



8

105+70.7
R.R. Spk. on E R/W
1" down
R/W Mon. 8668

