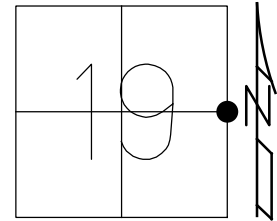


O.D.O.T. DISTRICT 2 SURVEY OFFICE (USE ONLY)

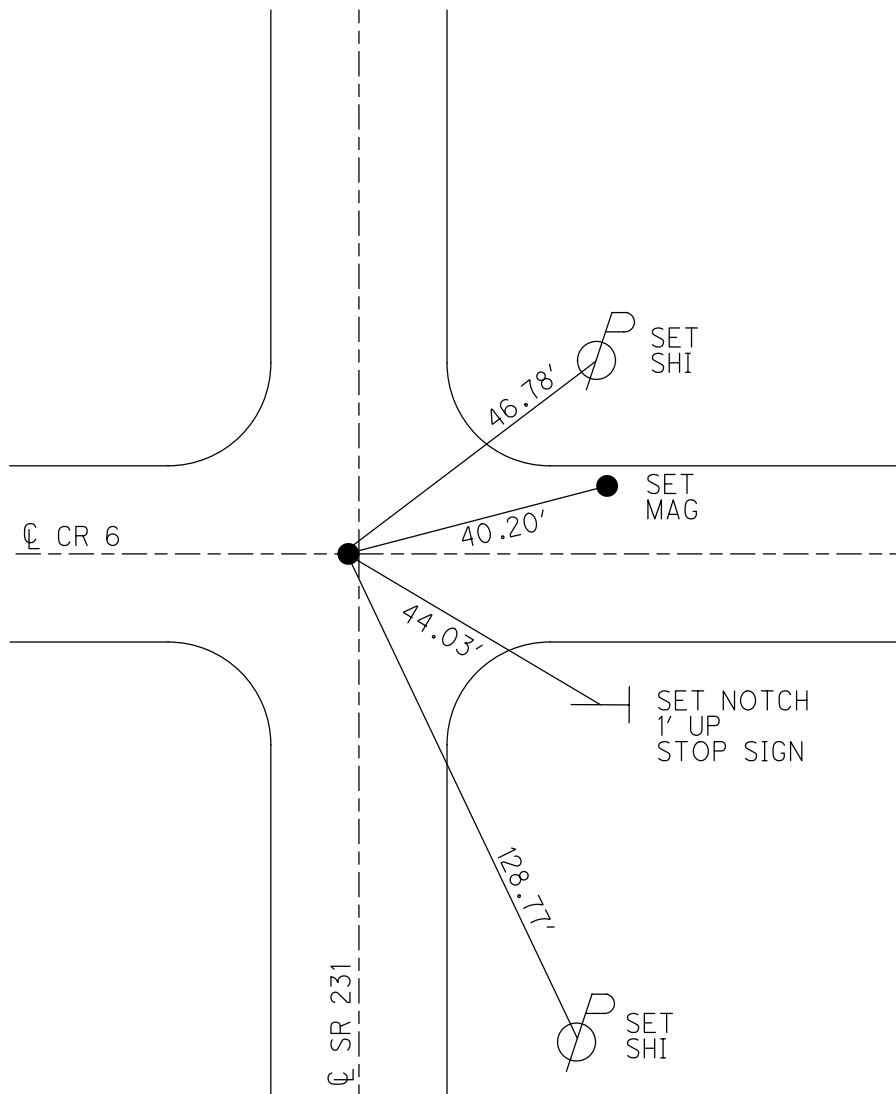
PERSONNEL	REFERENCE NO. <u>9</u>	SHEET <u>11</u> OF <u>34</u>
NOTES	RHOADES	DATE <u>11/6/23</u>
H.C.	AUBLE	WEATHER <u>SUNNY/WINDY</u>
R.C.	ASTON	TEMP. <u>48°</u>
	NIESE	
DWG BY	RHOADES	PID <u>95780</u>
		ROUTE <u>SR 231</u>
		COUNTY <u>SENECA</u>
		TOWNSHIP <u>EDEN</u>
		SECTION <u>19</u>
		T <u>1</u> N R <u>15</u> E

TYPE MONUMENT MAG/WASHER
 ON SURFACE - ~~BELOW~~ ON
 OFFSET 0.5' LT : ~~RT~~
9.6' TO LT EDGE PAVEMENT
 STATION: 132+53



HORZ.DATUM: NAD83(2011) GEOID: NAVD88 2018
 GRID: NORTHING: 497193.500 EASTING: 1783593.156

RECORD:
 STA.132+17.8
 FD IPIN
 ON CR 6
 FD IPIN
 6/19/97, MB
 SET P.K./WASHER
 8/21/97, MB
 FD P.K./WASHER
 8/16/04, MC
 FD P.K./WASHER
 REF9
 3/26/19
 8/16/19, JFO
 2/10/23, JMR
 FD P.K.SHANK
 REF9
 SET MAG/WASHER
 11/6/23, DSA



O.D.O.T. DISTRICT 2 SURVEY OFFICE (USE ONLY)

PERSONNEL

REFERENCE NO. 9

SHEET 10 OF 33

NOTES BARNHEISEL
 H.C. CANTERBURY
 R.C. ROUSOS
WEAVER

DATE 6/19/97
 WEATHER SUNNY
 TEMP. 70°

ROUTE SR 231
 COUNTY SENECA
 TOWNSHIP EDEN
 SECTION 19

DWG BY NIESE PID 107060

T 1 N R 15 E

TYPE MONUMENT IPIN

ON SURFACE - ~~BELOW~~ ON

OFFSET 0.9' LT : ~~RT~~

9.6' TO LT EDGE PAVEMENT

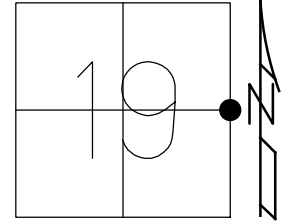
STATION: 132+53

HORZ. DATUM: NAD83(2011)

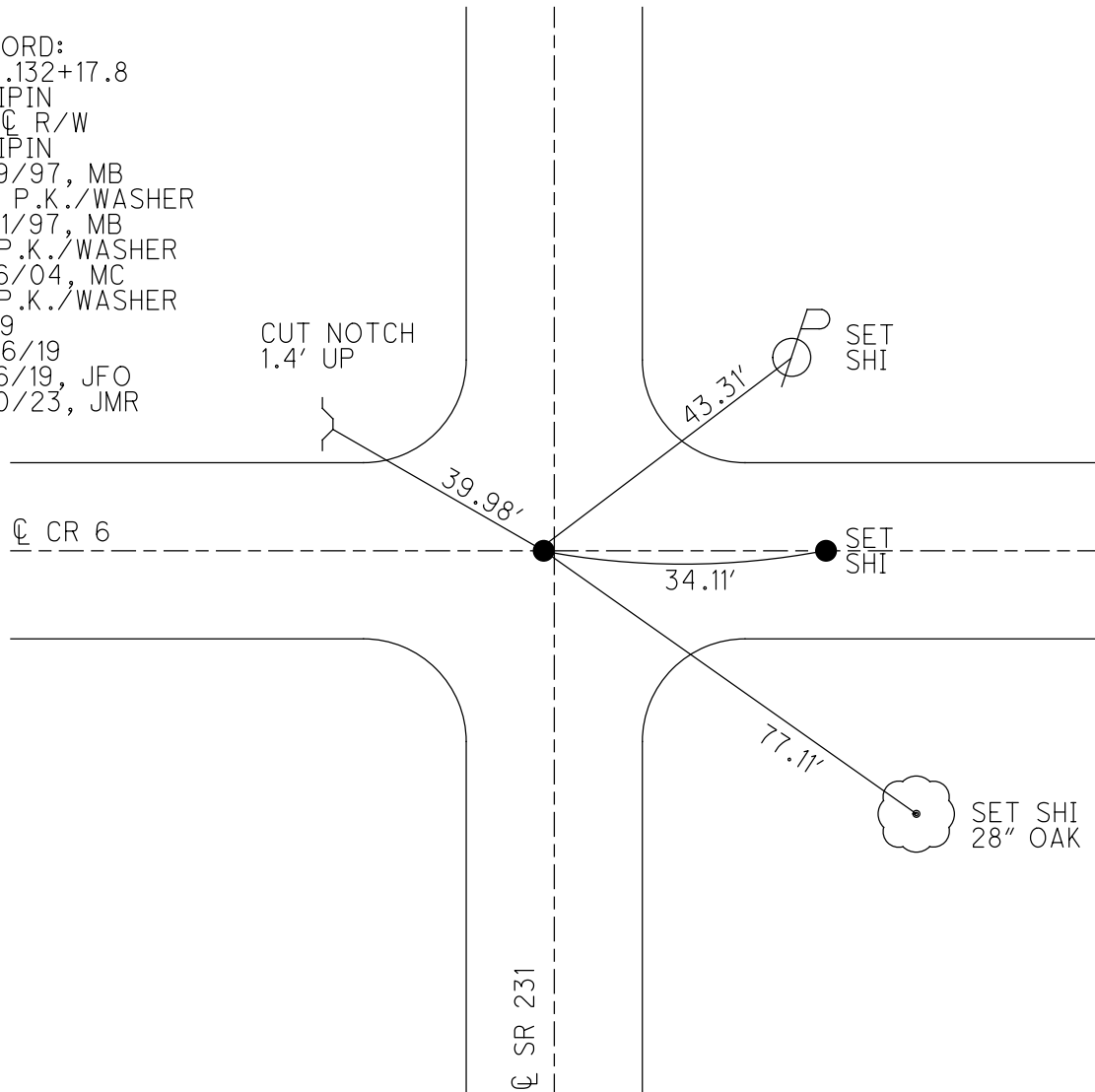
GEOID: 2012A

GRID: NORTHING: 497193.500

EASTING: 1783593.156



RECORD:
 STA. 132+17.8
 FD IPIN
 ON CR 6
 FD IPIN
 6/19/97, MB
 SET P.K./WASHER
 8/21/97, MB
 FD P.K./WASHER
 8/16/04, MC
 FD P.K./WASHER
 REF9
 3/26/19
 8/16/19, JFO
 2/10/23, JMR



O.D.O.T. DISTRICT 2 SURVEY OFFICE (USE ONLY)

PERSONNEL

REFERENCE NO. 9

SHEET 10 OF 33

NOTES BARNHEISEL DATE 6/19/97
 H.C. CANTERBURY WEATHER SUNNY
 R.C. ROUSOS TEMP. 70°
WEAVER

ROUTE SR 231
 COUNTY SENECA
 TOWNSHIP EDEN
 SECTION 19

DWG BY NIESE PID 107060

T 1 N R 15 E

TYPE MONUMENT IPIN

ON SURFACE - ~~BELOW~~ ON

OFFSET \varnothing PAVEMENT 0.9' LT : ~~RT~~

9.6' TO LT EDGE PAVEMENT

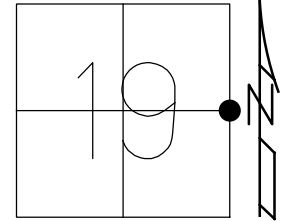
STATION: 132+53

HORZ. DATUM: NAD83(2011)

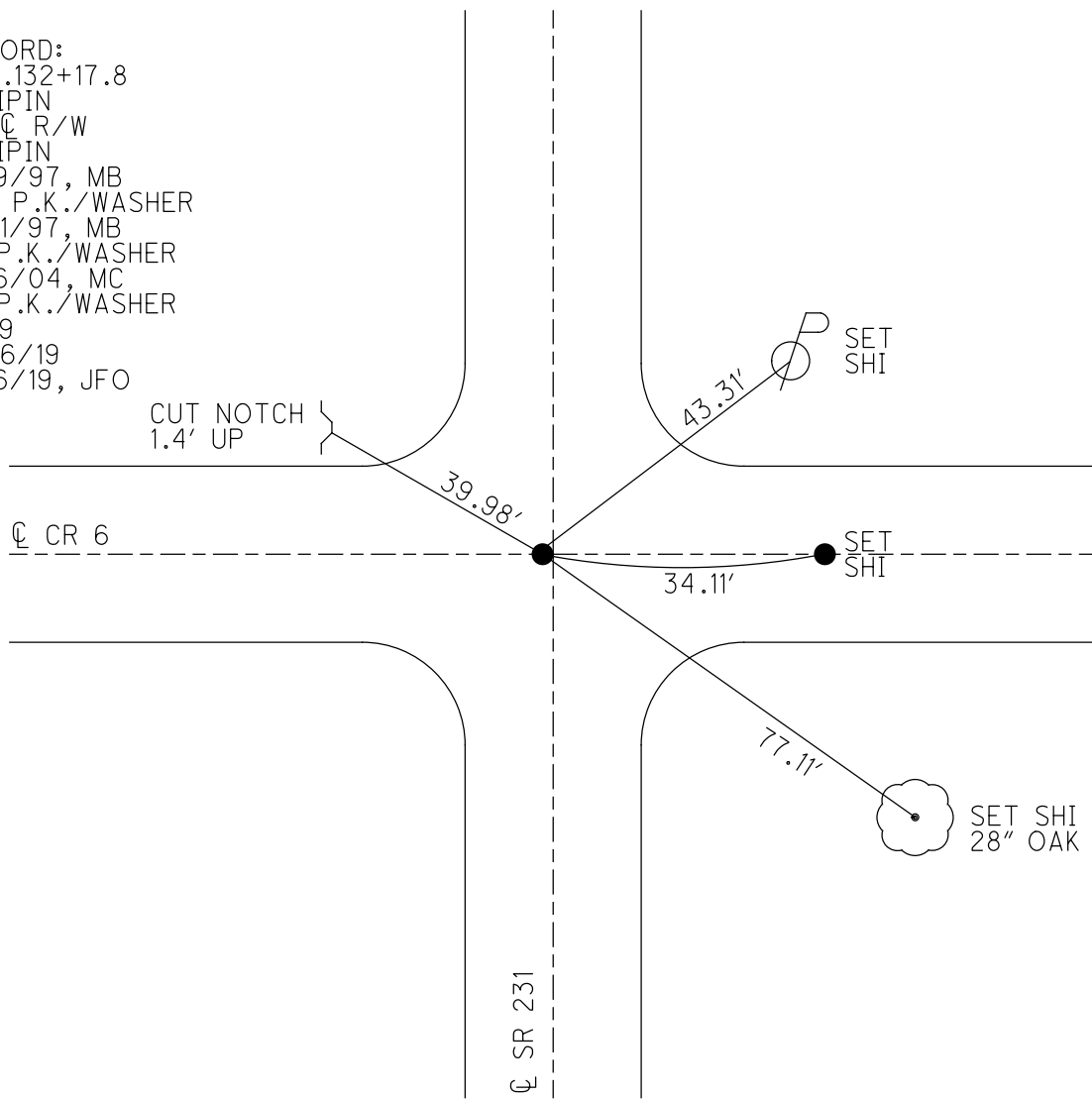
GEOID: 2012A

GRID: NORTHING: 497193.500

EASTING: 1783593.156



RECORD:
 STA. 132+17.8
 FD IPIN
 ON \varnothing R/W
 FD IPIN
 6/19/97, MB
 SET P.K./WASHER
 8/21/97, MB
 FD P.K./WASHER
 8/16/04, MC
 FD P.K./WASHER
 REF9
 3/26/19
 8/16/19, JFO



\varnothing SR 231

O.D.O.T. DISTRICT 2 SURVEY OFFICE

PERSONNEL

REFERENCE NO. 9

SHEET 10 OF 27

NOTES Barcode

H.C. CANTON BURY

DATE 6-19-97

ROUTE SR 231

R.C. Rousos

WEATHER SUNNY

COUNTY SENECA

WENNER

TEMP. +90

TOWNSHIP EDEN

Drawn By Rousos

SECTION 19.70

T L N R I S E

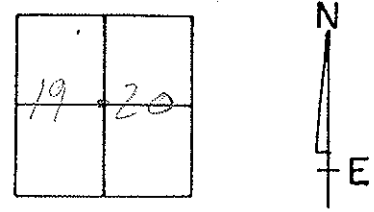
TYPE MONUMENT I-PIN

ON SURFACE = BELOW Surface

LEFT-0 PAV'T. - RIGHT 0.9' LT

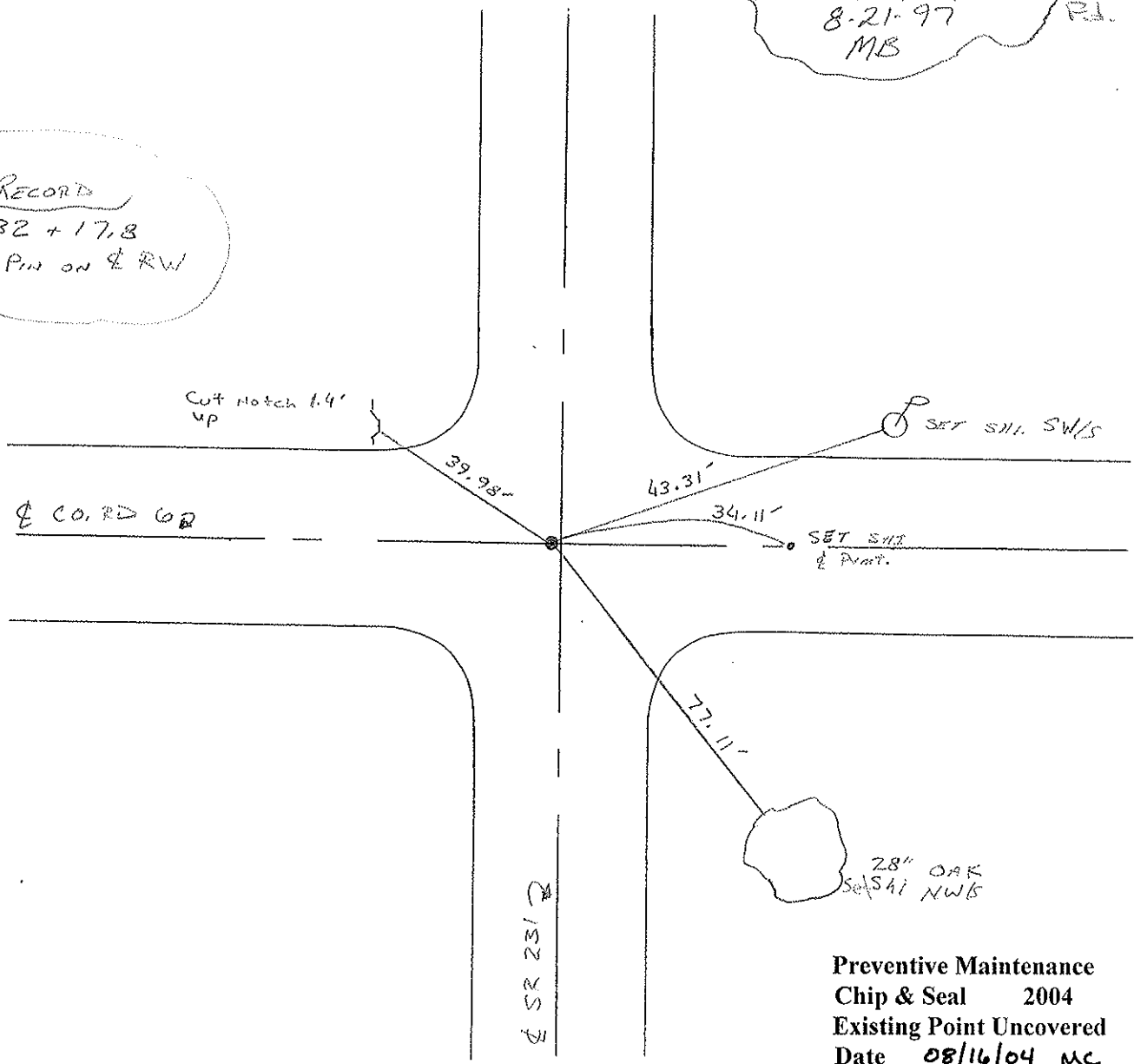
9.6 TO LT EDGE PAVEMENT

S.L.M. 4 + 039.6 M 132+53



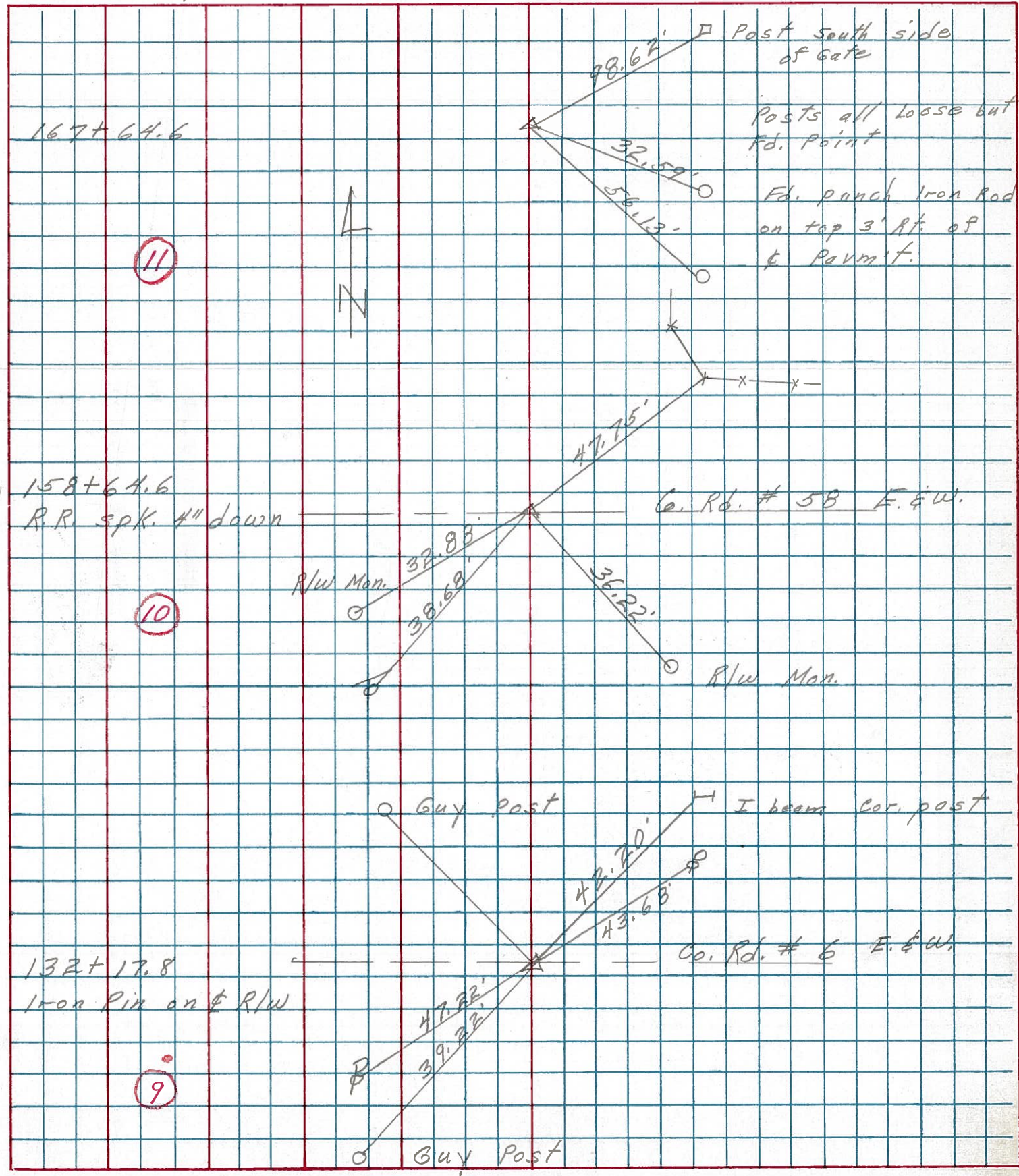
RESET PK & WASHER
8-21-97
MB

RECORD
132 + 17.8
I-Pin on & RW



Preventive Maintenance
Chip & Seal 2004
Existing Point Uncovered
Date 08/16/04 MC

PERSONNEL _____ TITLE _____ PERSONNEL _____ TITLE _____
 COUNTY Seneca DATE 3-5-75
 S. R. 231 WEATHER _____
 SEC. B TEMP. 40°
 DESCRIPTION Wyandot Co. Line to U.S. 224 JOB NO. _____

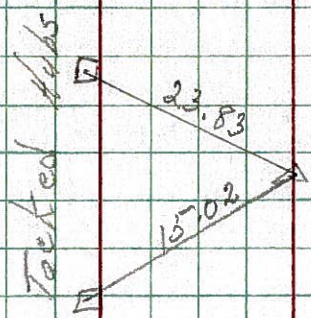


PERSONNEL	TITLE	PERSONNEL	TITLE	COUNTY	DATE
Schneider				Seneca	10-29-69
Mosser				S. R. 231	WEATHER Fair
Potts				SEC. B	TEMP. 40'
DESCRIPTION				Wyandot Co. Line to Tiffin	JOB NO.
LEFT		CENTER LINE		RIGHT	

11

167+64.6
did not find

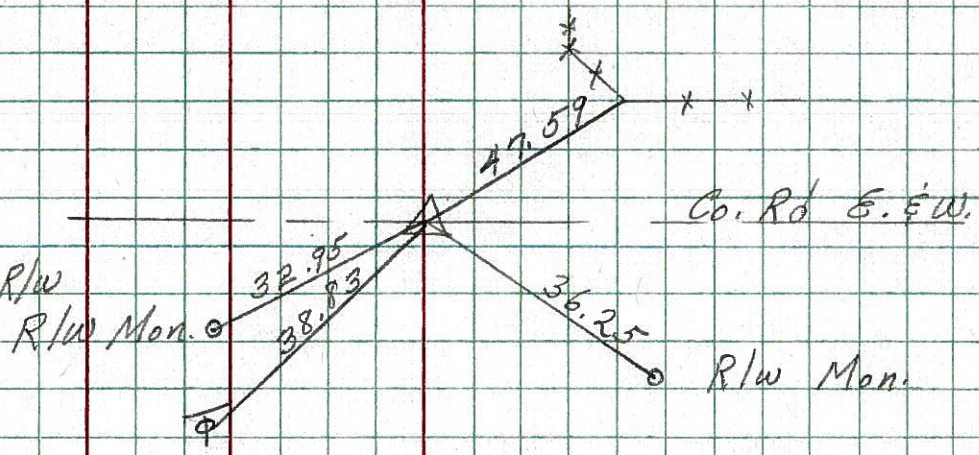
8671



10

158+64.6
P.K. Nail on E R/W
2" down

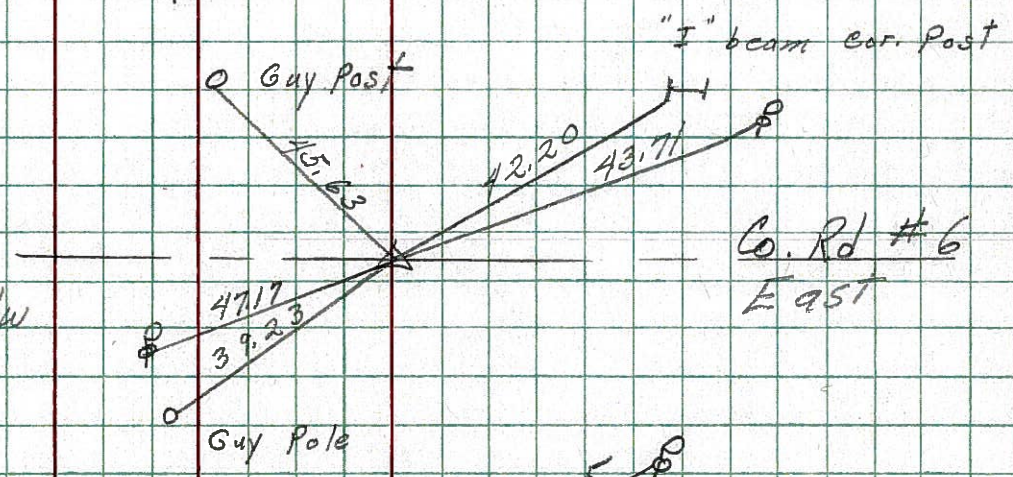
8670



9

132+17.8
Iron Pin on E R/W

8669



8

105+70.7
R.R. Spk on E R/W
1" down

8668

