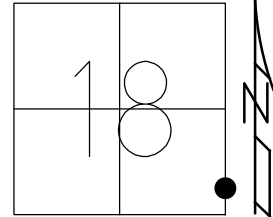


O.D.O.T. DISTRICT 2 SURVEY OFFICE (USE ONLY)

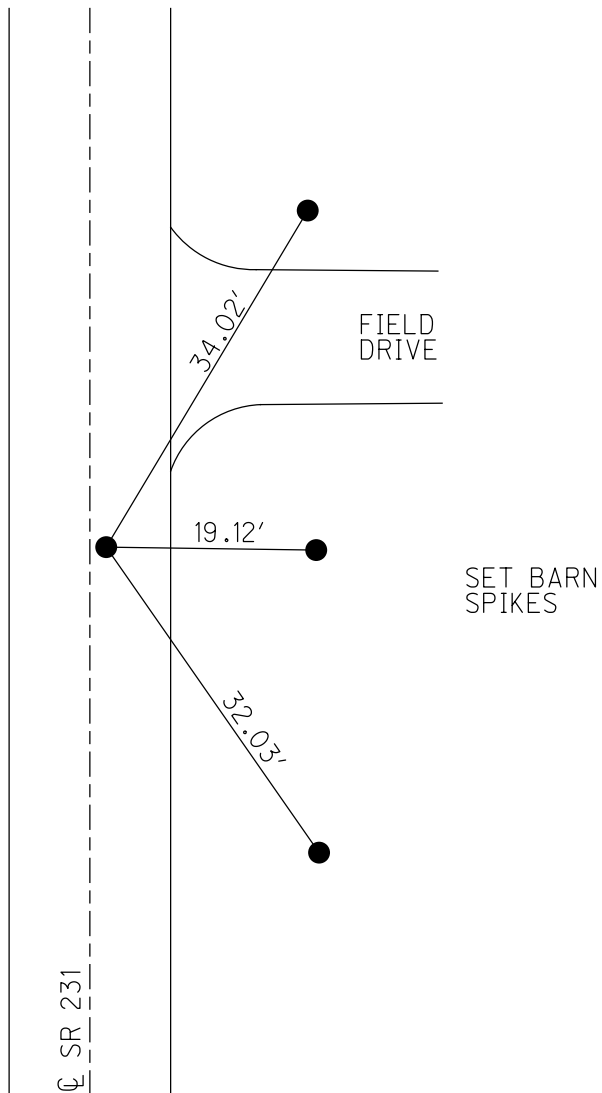
PERSONNEL \_\_\_\_\_ REFERENCE NO. 11 SHEET 13 OF 34  
 NOTES RHOADES DATE 11/3/23 ROUTE SR 231  
 H.C. AUBLE WEATHER SUNNY COUNTY SENECA  
 R.C. ASTON TEMP. 45° TOWNSHIP EDEN  
 \_\_\_\_\_ NIESE SECTION 18  
 DWG BY RHOADES PID 95780 T 1 N R 15 E

TYPE MONUMENT MAG/WASHER  
 ON SURFACE - ~~BELOW~~ ON  
 OFFSET  $\text{C}$  PAVEMENT 2.8' ~~LT~~ : RT  
7.0' TO RT EDGE PAVEMENT  
 STATION: 168+11



HORZ. DATUM: NAD83(2011) GEOID: NAVD88 2018  
 GRID: NORTHING: 500739.117 EASTING: 1783620.939

RECORD:  
 STA. 167+64.6  
 $\Delta = 2^{\circ}18'40''$  LT  
 6/29/81, CRONIN  
 FD IPIN  
 W/DIMPLE  
 3" DOWN  
 6/19/97, MB  
 SET P.K./NAIL  
 8/21/97, MB  
 FD P.K./WASHER  
 8/16/04, MC  
 FD P.K./WASHER  
 REF11  
 3/27/19  
 8/16/19, JFO  
 2/10/23, JMR  
 FD P.K./WASHER  
 REF11  
 4/19/23, TDN  
 SET MAG/WASHER  
 11/3/23, DSA



O.D.O.T. DISTRICT 2 SURVEY OFFICE (USE ONLY)

PERSONNEL \_\_\_\_\_ REFERENCE NO. 11 SHEET 12 OF 33  
 NOTES BARNHISEL DATE 6/19/97 ROUTE SR 231  
 H.C. CANTERBURY WEATHER SUNNY COUNTY SENECA  
 R.C. ROUSOS TEMP. 70° TOWNSHIP EDEN  
WEAVER SECTION 18  
 DWG BY NIESE PID 107060 T 1 N R 15 E

TYPE MONUMENT IPIN W/DIMPLE

~~ON SURFACE~~ - BELOW 3"

OFFSET  $\odot$  PAVEMENT 2.8' ~~LT~~ : RT

7.0' TO RT EDGE PAVEMENT

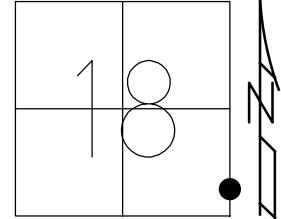
STATION: 168+11

HORIZ.DATUM: NAD83(2011)

GEOID: 2012A

GRID: NORTHING: 500739.117

EASTING: 1783620.939



RECORD:  
 STA.167+64.6  
 $\Delta = 2^{\circ}18' 40''$  LT  
 6/29/81, CRONIN  
 FD IPIN W/DIMPLE  
 3" DOWN  
 6/19/97, MB  
 SET P.K./NAIL  
 8/21/97, MB  
 FD P.K./WASHER  
 8/16/04, MC  
 FD P.K./WASHER  
 REF11  
 3/27/19  
 8/16/19, JFO  
 2/10/23, JMR

$\odot$  SR 231

O.D.O.T. DISTRICT 2 SURVEY OFFICE (USE ONLY)

PERSONNEL

REFERENCE NO. 11

SHEET 12 OF 33

NOTES BARNHISEL

DATE 6/19/97

ROUTE SR 231

H.C. CANTERBURY

WEATHER SUNNY

COUNTY SENECA

R.C. ROUSOS

TEMP. 70°

TOWNSHIP EDEN

WEAVER

DWG BY NIESE

PID 107060

SECTION 18

T 1 N R 15 E

TYPE MONUMENT IPIN W/DIMPLE

~~ON SURFACE~~ - BELOW 3"

OFFSET 2.8' LT : RT

7.0' TO RT EDGE PAVEMENT

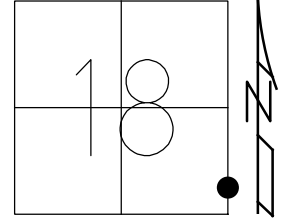
STATION: 168+11

HORZ. DATUM: NAD83(2011)

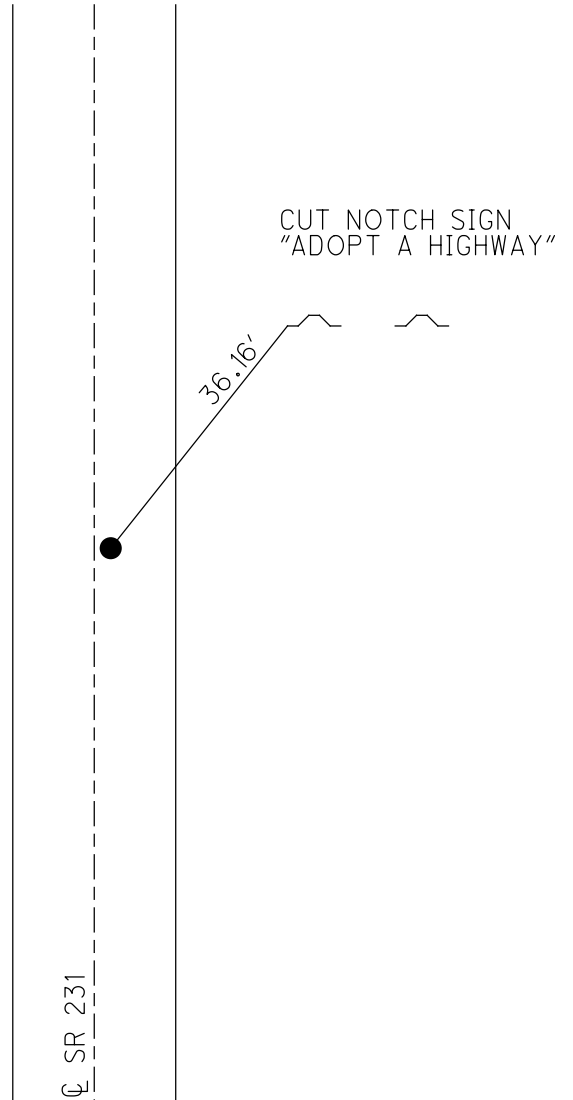
GEOID: 2012A

GRID: NORTHING: 500739.117

EASTING: 1783620.939



RECORD:  
 STA. 167+64.6  
 $\Delta = 2^{\circ}18'40''$  LT  
 6/29/81, CRONIN  
 FD IPIN W/DIMPLE  
 3" DOWN  
 6/19/97, MB  
 SET P.K./NAIL  
 8/21/97, MB  
 FD P.K./WASHER  
 8/16/04, MC  
 FD P.K./WASHER  
 REF11  
 3/27/19  
 8/16/19, JFO



O.D.O.T. DISTRICT 2 SURVEY OFFICE

PERSONNEL

REFERENCE NO. 11

SHEET 12 OF 27

NOTES BARNHISEL

H.C. CANTERBURY

R.C. ROUSOS

P WEAVER

Drawn By ROUSOS

DATE 6-19-99

WEATHER SUNNY

TEMP. +70

ROUTE SR 231

COUNTY SENECA

TOWNSHIP EDEN

SECTION \_\_\_\_\_

T / N R 15 E

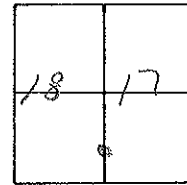
TYPE MONUMENT I PIN w/ CENTER PUNCH

ON SURFACE - BELOW 3"

LEFT - CL PAVT. - RIGHT 2.8'

2.0 TO RT EDGE PAVEMENT

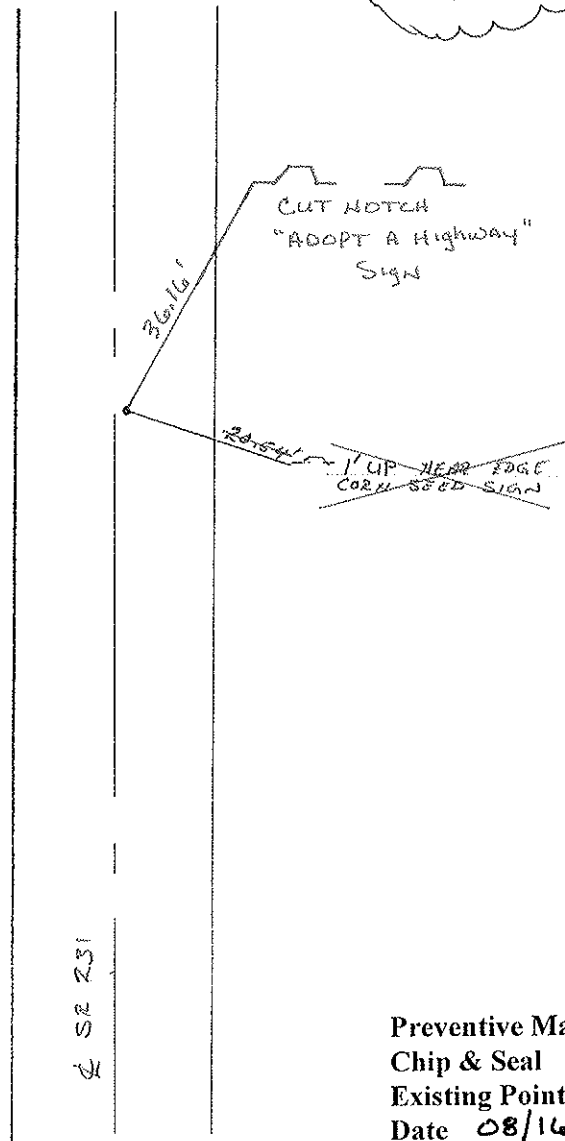
S.L.M. S+124.1 M 168+11



RESET P/NAIL  
8.21.99  
MP

RECORD:  
167+64.6

NOTE:  
See Notes by CRO/MH  
6/29/81



Preventive Maintenance  
Chip & Seal 2004  
Existing Point Uncovered  
Date 08/16/04 MC

O.D.O.T. DISTRICT 2 SURVEY OFFICE

SHEET \_\_\_\_\_ OF \_\_\_\_\_

County SENECA S.R. 231

Township EDEN

Section 17 - 18

T/LN, RISE

Personnel MOSSER

BARBOUR

RIPPLE

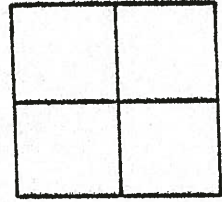
GEYMAN

#11

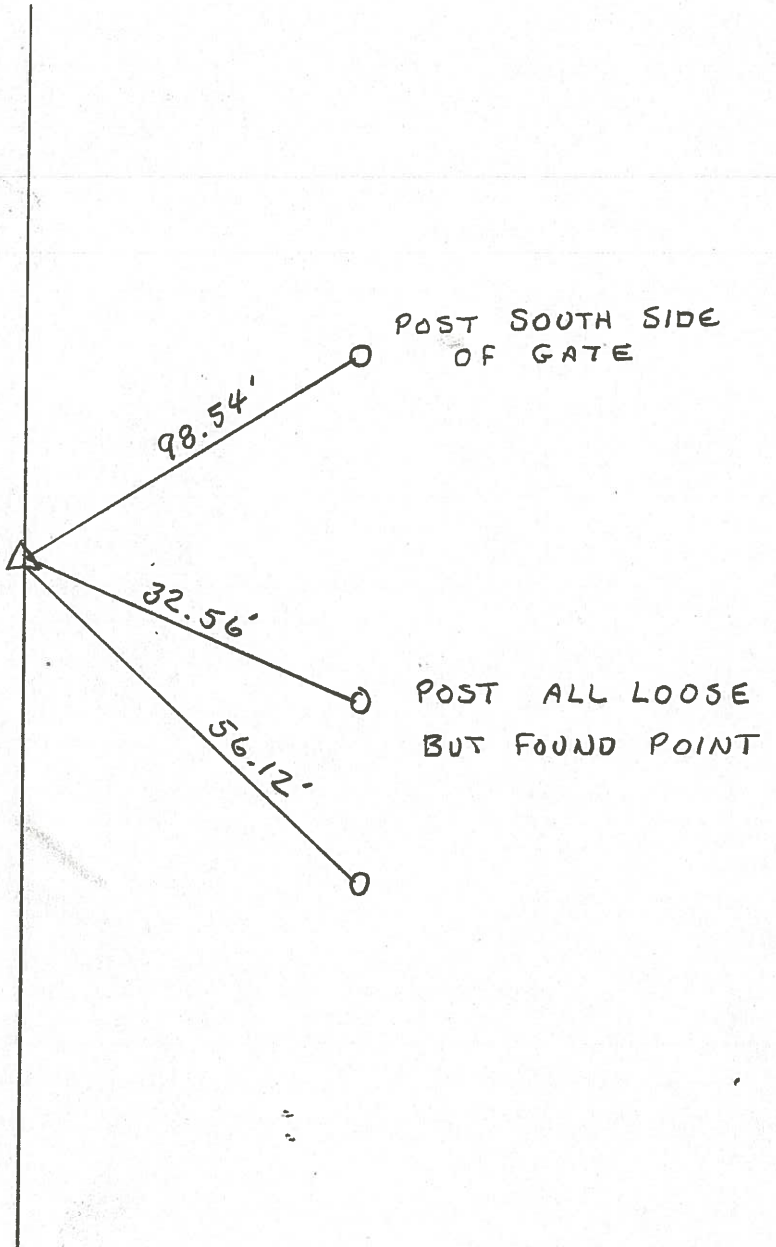
Date 6-24-81

Weather P. CLOUDY

Temp. 70°



P.I. 167+64.6  
IRON PIPE 1 1/2" DOWN



PERSONNEL TITLE PERSONNEL TITLE  
 MOSSER \_\_\_\_\_  
 BARBOUR \_\_\_\_\_  
 RIPPLE \_\_\_\_\_  
 BEYMAN \_\_\_\_\_

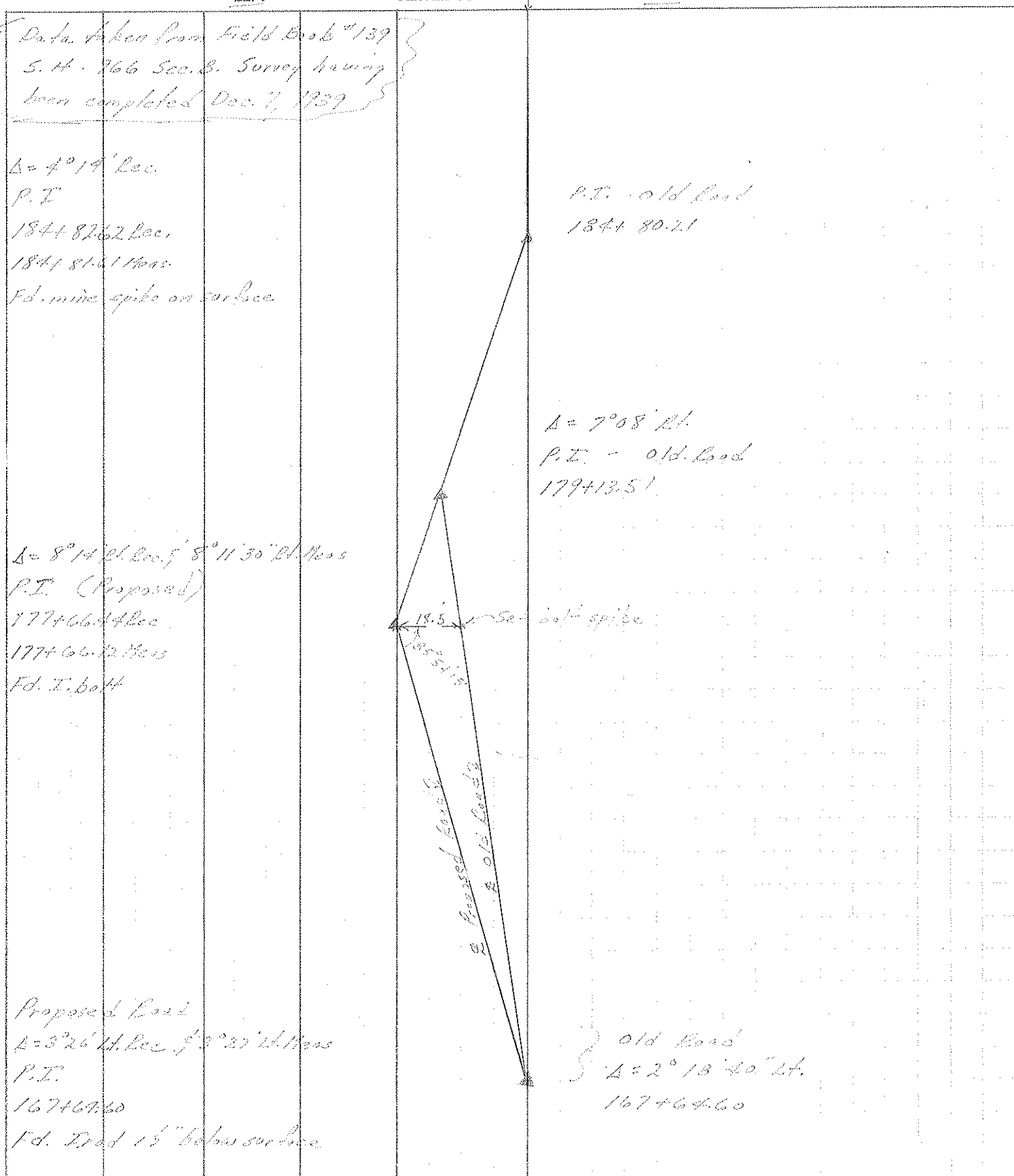
COUNTY SENECA DATE 6-24-81  
 S. R. 231 WEATHER P. Cloudy  
 SEC. 3.4 ± S.L.M. TEMP. 70

DESCRIPTION CONTROL POINTS JOB NO. \_\_\_\_\_

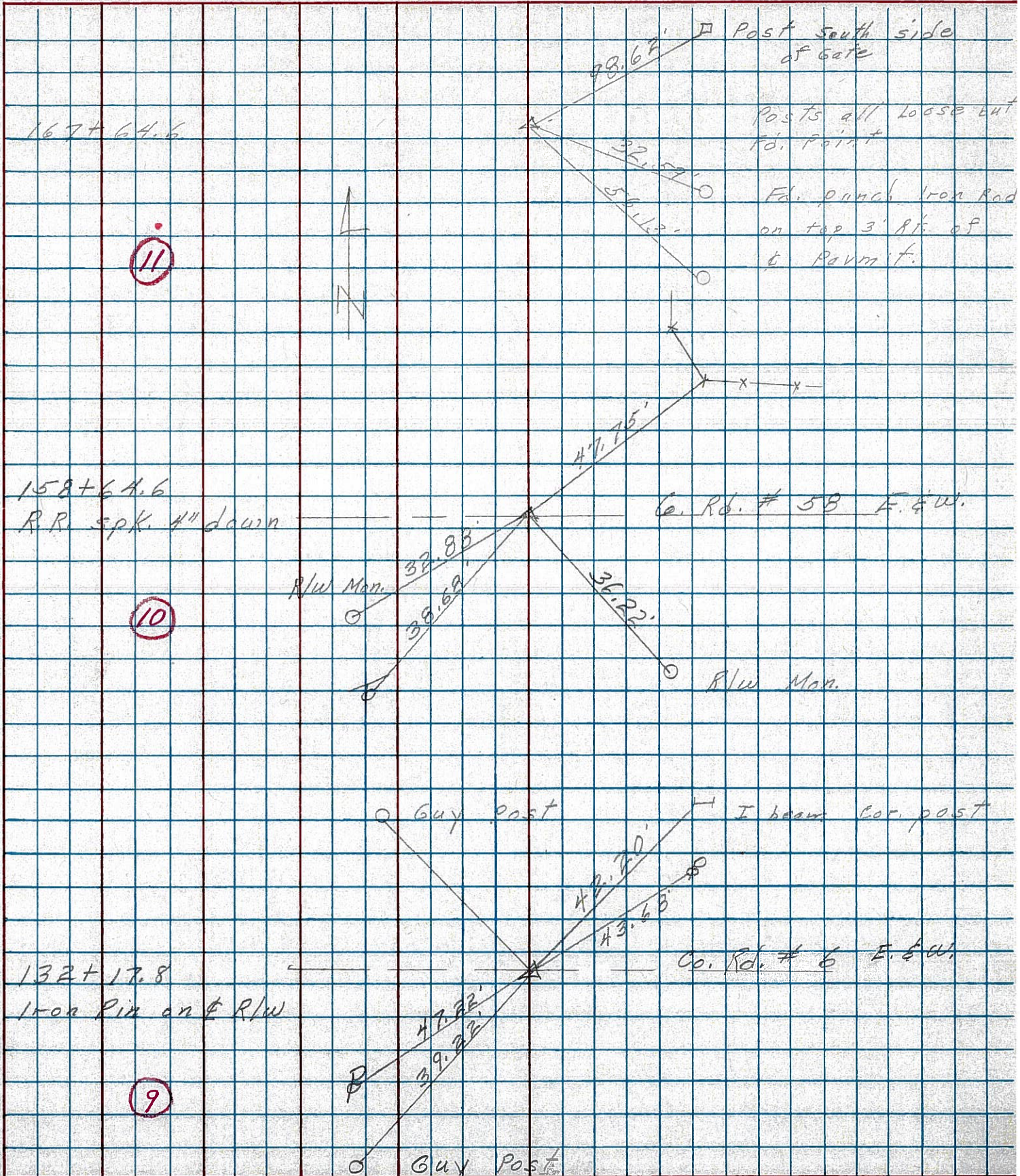
LEFT	CENTER LINE	RIGHT
<p>P.I. <span style="border: 1px solid red; border-radius: 50%; padding: 2px;">#13</span>                      184+81.61 Meas. - 184+82.62 Rec.                      SMALL MINE SPK.                      ON TOP OF R/W</p>	<p style="text-align: center;">← CENTER LINE →</p>	
<p><span style="border: 1px solid red; border-radius: 50%; padding: 2px;">#12</span>                      P.I. 179+66.12                      I.P.                      ALL PLUMBED                      7.70 W. of WEST EDGE                      OF PAVMT.</p>	<p style="text-align: center;"><i>COPYED</i></p>	
<p>P.I. <span style="border: 1px solid red; border-radius: 50%; padding: 2px;">#11</span>                      167+64.6                      I.P. 1/2" DOWN</p>		

PERSONNEL	TITLE	PERSONNEL	TITLE	COUNTY	DATE
<u>CROWN</u>		<u>BARROE</u>		<u>SUNCOI</u>	<u>6/22/51</u>
<u>RIPPLE</u>				S. R. <u>#731</u>	WEATHER <u>sunny</u>
<u>GRYMAN</u>				SEC. <u>3.4 ± SLM</u>	TEMP. <u>80°</u>
<u>HOOPER</u>					

DESCRIPTION E. Alignment JOB NO. \_\_\_\_\_



PERSONNEL \_\_\_\_\_ TITLE \_\_\_\_\_ PERSONNEL \_\_\_\_\_ TITLE \_\_\_\_\_  
 COUNTY Seneca DATE 3-5-75  
 S. R. 231 WEATHER \_\_\_\_\_  
 SEC. B TEMP. 40°  
 DESCRIPTION Wyandot Co. Line to U.S. 224 JOB NO. \_\_\_\_\_





PERSONNEL TITLE PERSONNEL TITLE

COUNTY Seneca DATE 10-29-69

Schneider

Mosser

Potts

S. R. 231

WEATHER Fair

SEC. B

TEMP. 40°

DESCRIPTION Wyandot Co. Line to Tiffin

JOB NO.

LEFT

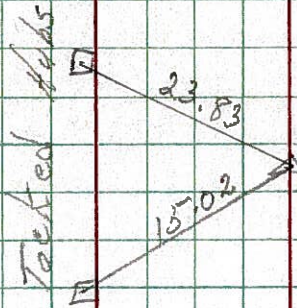
CENTER LINE

RIGHT

11

167+64.6  
did not find

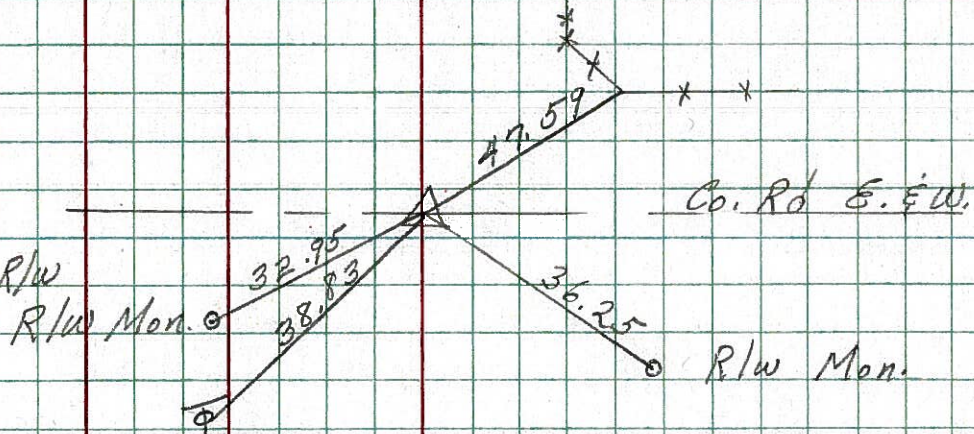
8671



10

158+64.6  
P.K. Nail on E R/W  
2" down

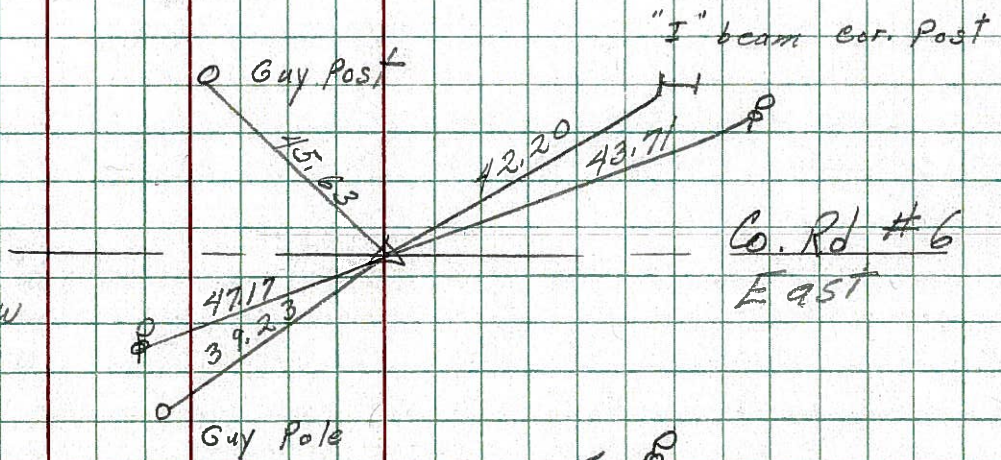
8670



9

132+17.8  
Iron Pin on E R/W

8669



8

105+70.7  
R.R. Spk on E R/W  
1" down

8668

