

O.D.O.T. DISTRICT 2 SURVEY OFFICE (USE ONLY)

PERSONNEL

REFERENCE NO. 13

SHEET 16 OF 34

NOTES RHOADES

DATE 11/3/23

ROUTE SR 231

H.C. AUBLE

WEATHER SUNNY

COUNTY SENECA

R.C. ASTON

TEMP. 45°

TOWNSHIP EDEN

NIESE

DWG BY RHOADES

PID 95780

SECTION 18

T 1 N R 15 E

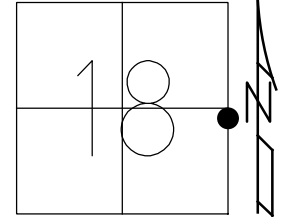
TYPE MONUMENT MAG/WASHER

ON SURFACE - ~~BELOW~~ ON

OFFSET  $\varnothing$  PAVEMENT 4.0' ~~LT~~ : RT

6.2' TO LT EDGE PAVEMENT

STATION: 185+32



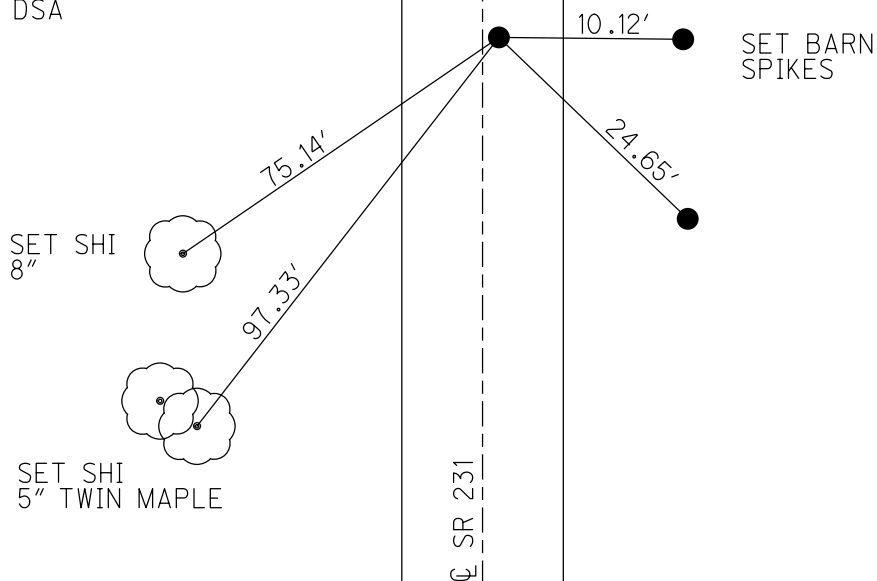
HORZ. DATUM: NAD83(2011)

GEOID: NAVD88 2018

GRID: NORTHING: 502451.667

EASTING: 1783634.391

RECORD: P.I.  
 STA.184+81.61  
 $\Delta = 4^{\circ} 14'$   
 FD SM.MINE SPIKE  
 6/20/97, MC  
 SET P.K./WASHER  
 8/21/97, MB  
 FD P.K./WASHER  
 8/16/04, MC  
 FD P.K./WASHER  
 REF13  
 3/27/19  
 8/16/19, JFO  
 2/10/23, JMR  
 FD P.K.NAIL  
 REF13  
 4/19/23, TDN  
 SET MAG/WASHER  
 11/3/23, DSA



O.D.O.T. DISTRICT 2 SURVEY OFFICE (USE ONLY)

PERSONNEL \_\_\_\_\_

REFERENCE NO. 13

SHEET 15 OF 33

NOTES CANTERBURY

DATE 6/20/97

ROUTE SR 231

H.C. CANTERBURY

WEATHER SUNNY

COUNTY SENECA

R.C. ROUSOS

TEMP. 89°

TOWNSHIP EDEN

SECTION 18

DWG BY NIESE PID 107060

T 1 N R 15 E

TYPE MONUMENT SM. MINE SPIKE

ON SURFACE - ~~BELOW~~ ON

OFFSET  $\perp$  PAVEMENT 3.8' ~~LT~~ : RT

6.2' TO LT EDGE PAVEMENT

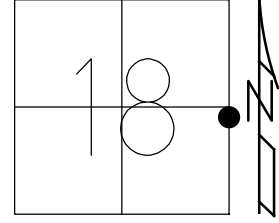
STATION: 185+32

HORZ.DATUM: NAD83(2011)

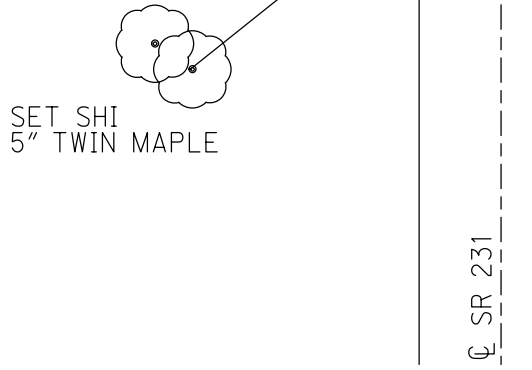
GEOID: 2012A

GRID: NORTHING: 502451.667

EASTING: 1783634.391



RECORD: P.I.  
 STA.184+81.61  
 $\Delta = 4^{\circ} 14'$   
 FD SM. MINE SPIKE  
 6/20/97, MC  
 SET P.K./WASHER  
 8/21/97, MB  
 FD P.K./WASHER  
 8/16/04, MC  
 FD P.K./WASHER  
 REF13  
 3/27/19  
 8/16/19, JFO  
 2/10/23, JMR



SET SHI  
 5" TWIN MAPLE

97.48'

$\perp$  SR 231

O.D.O.T. DISTRICT 2 SURVEY OFFICE (USE ONLY)

PERSONNEL

REFERENCE NO. 13

SHEET 15 OF 33

NOTES CANTERBURY

DATE 6/20/97

ROUTE SR 231

H.C. CANTERBURY

WEATHER SUNNY

COUNTY SENECA

R.C. ROUSOS

TEMP. 89°

TOWNSHIP EDEN

SECTION 18

DWG BY NIESE

PID 107060

T 1 N R 15 E

TYPE MONUMENT SM. MINE SPIKE

ON SURFACE - ~~BELOW~~ ON

OFFSET CL PAVEMENT 3.8' ~~LT~~ : RT

6.2' TO LT EDGE PAVEMENT

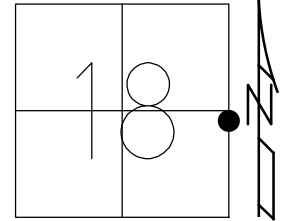
STATION: 185+32

HORZ.DATUM: NAD83(2011)

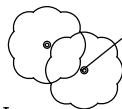
GEOID: 2012A

GRID: NORTHING: 502451.667

EASTING: 1783634.391



RECORD: P.I.  
STA.184+81.61  
 $\Delta = 4^\circ 14'$   
FD SM. MINE SPIKE  
6/20/97, MC  
SET P.K./WASHER  
8/21/97, MB  
FD P.K./WASHER  
8/16/04, MC  
FD P.K./WASHER  
REF13  
3/27/19  
8/16/19, JFO



SET SHI  
5" TWIN MAPLE

97.48'

CL SR 231

O.D.O.T. DISTRICT 2 SURVEY OFFICE

PERSONNEL

REFERENCE NO. \_\_\_\_\_

SHEET 15 OF 27

NOTES Centerbury

H.C. Centerbury

DATE 6-20-97

ROUTE SR 231

R.C. Rouses

WEATHER Sunny

COUNTY Seneca

Drawn By Rouses

TEMP. 89°

TOWNSHIP EDED

SECTION 17, 18

T1 N R 15 E

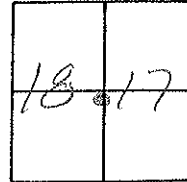
TYPE MONUMENT Small MINE SPIKE

ON SURFACE - BELOW ON SURFACE

LEFT - C PAV'T. - RIGHT 3, 8'

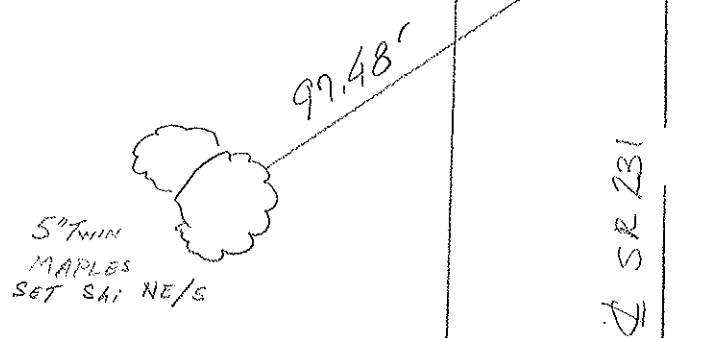
G.2 TO RT EDGE PAVEMENT

S.L.M. 5+648.50 M 185+32



RESET P.I. / WASHED  
8-21-97  
MS  
Pd.

RECORD  
P.I. 184+81, Col mens  
184+82, G2 REC  
Small Mine Spike  
ON SURFACE



Preventive Maintenance  
Chip & Seal 2004  
Existing Point Uncovered  
Date 08/16/04 MC



# O.D.O.T. DISTRICT 2 SURVEY OFFICE

①

PERSONNEL \_\_\_\_\_

REFERENCE NO. \_\_\_\_\_

SHEET \_\_\_\_\_ OF \_\_\_\_\_

NOTES Cronin

H.C. Ripple

R.C. Barbour

Geyman

DATE 12/17/87

WEATHER overcast

TEMP. 30°

ROUTE S.R. #231

COUNTY Seneca

TOWNSHIP Eden

SECTION 18

T. 1 N. R. 15 E.

TYPE MONUMENT mine spike

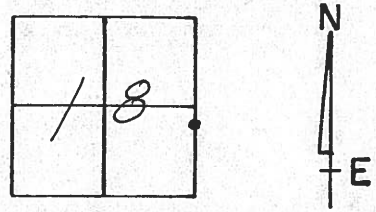
ON SURFACE - BELOW 1/2" below

LEFT- & PAV'T. - RIGHT 3.5' rt. & Pav't.

TO \_\_\_\_\_ EDGE PAVEMENT

S.L.M. \_\_\_\_\_

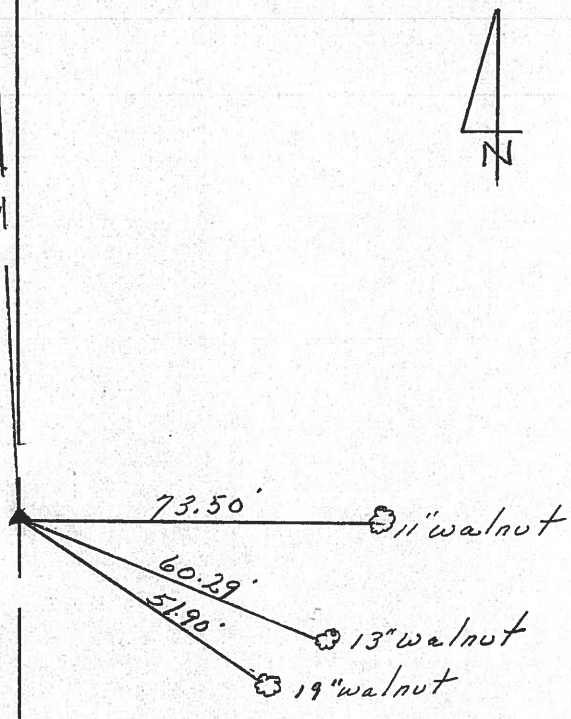
13



P.I.  
184+81.61 Meas  
184+82.62 Rec.  
1 pin 5 1/2" ± below surface

R/W S.R. #231

S.R. #231



OD.OT. DISTRICT 2 SURVEY OFFICE

SHEET \_\_\_\_\_ OF \_\_\_\_\_

County SENECA S.R. 231

Township EDEN

Section 17-18

T/LN, RISE

Personnel MOSSER

BARBOUR

RIPPLE

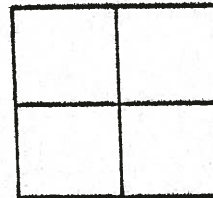
GEYMAN

13

Date 6-24-81

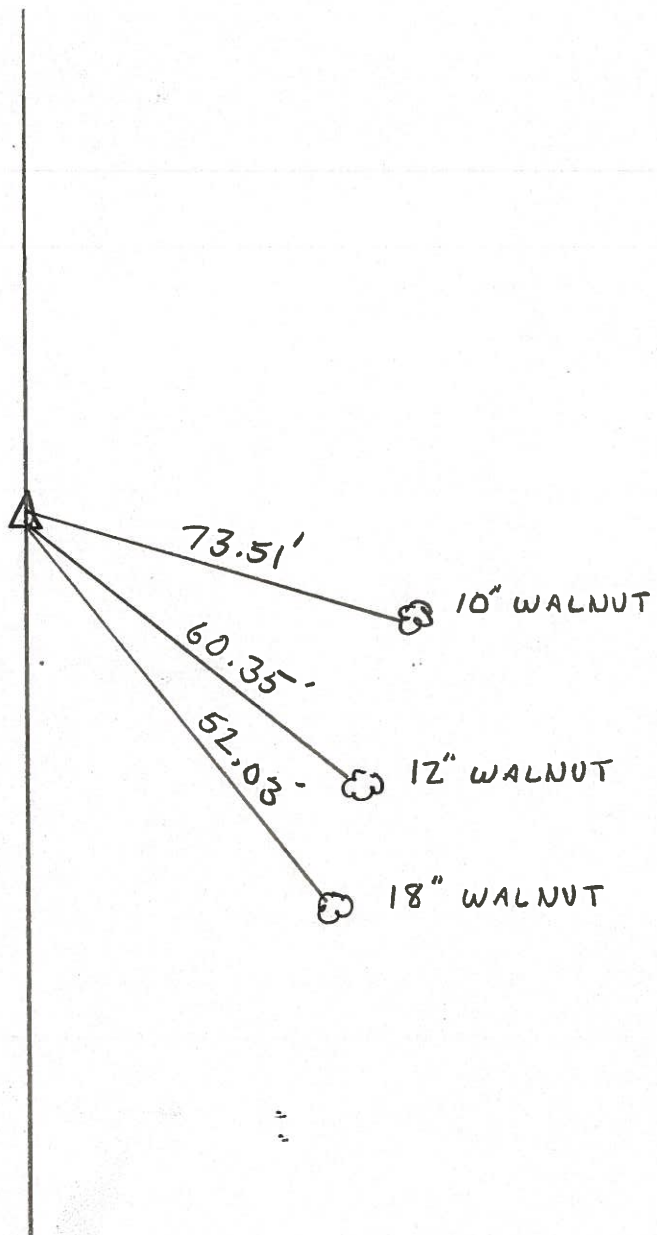
Weather P. CLOUDY

Temp. 70°



P.I. 184+81.61 MEAS.  
184+82.62 REC.

SMALL MINE SPR.  
ON TOP OF E R/W



PERSONNEL TITLE PERSONNEL TITLE  
 MOSSER \_\_\_\_\_  
 BARBOUR \_\_\_\_\_  
 RIPPLE \_\_\_\_\_  
 GEYMAN \_\_\_\_\_

COUNTY SENECA

DATE 6-24-81

S. R. 231

WEATHER P. Cloudy

SEC. 3.4 ± S.L.M.

TEMP. 70

DESCRIPTION

CONTROL POINTS

JOB NO. \_\_\_\_\_

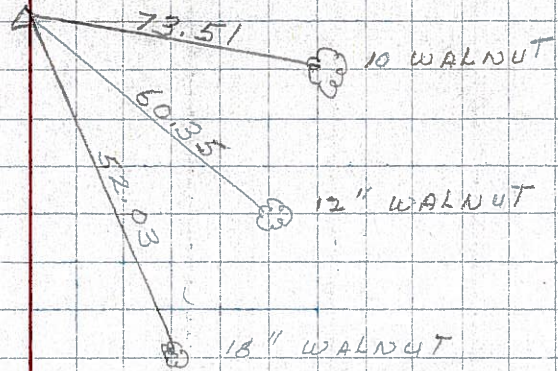
LEFT

CENTER LINE

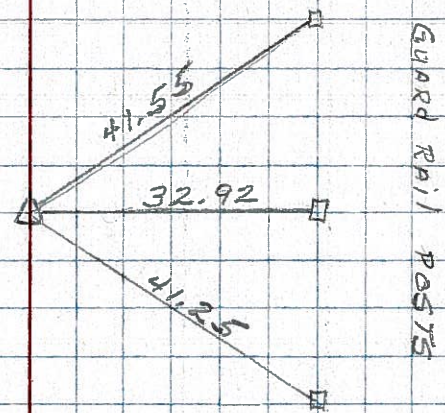
RIGHT

**#13**  
 P.I. 184+81.61 Meas. 184+82.62 Rec.  
 Small MINE SPK.  
 ON TOP of R/W

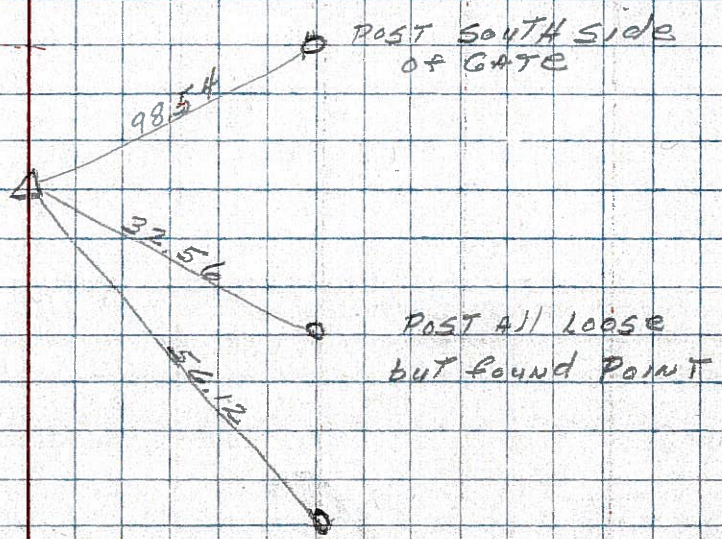
~~COPIED~~



**#12**  
 P.I. 179+66.12  
 I.P.  
 ALL PLUMBED  
 7.70 W. of west edge  
 of PAVMT.



**#11**  
 P.I. 1167+64.6  
 I.P. 1/2" Down





PERSONNEL TITLE PERSONNEL TITLE

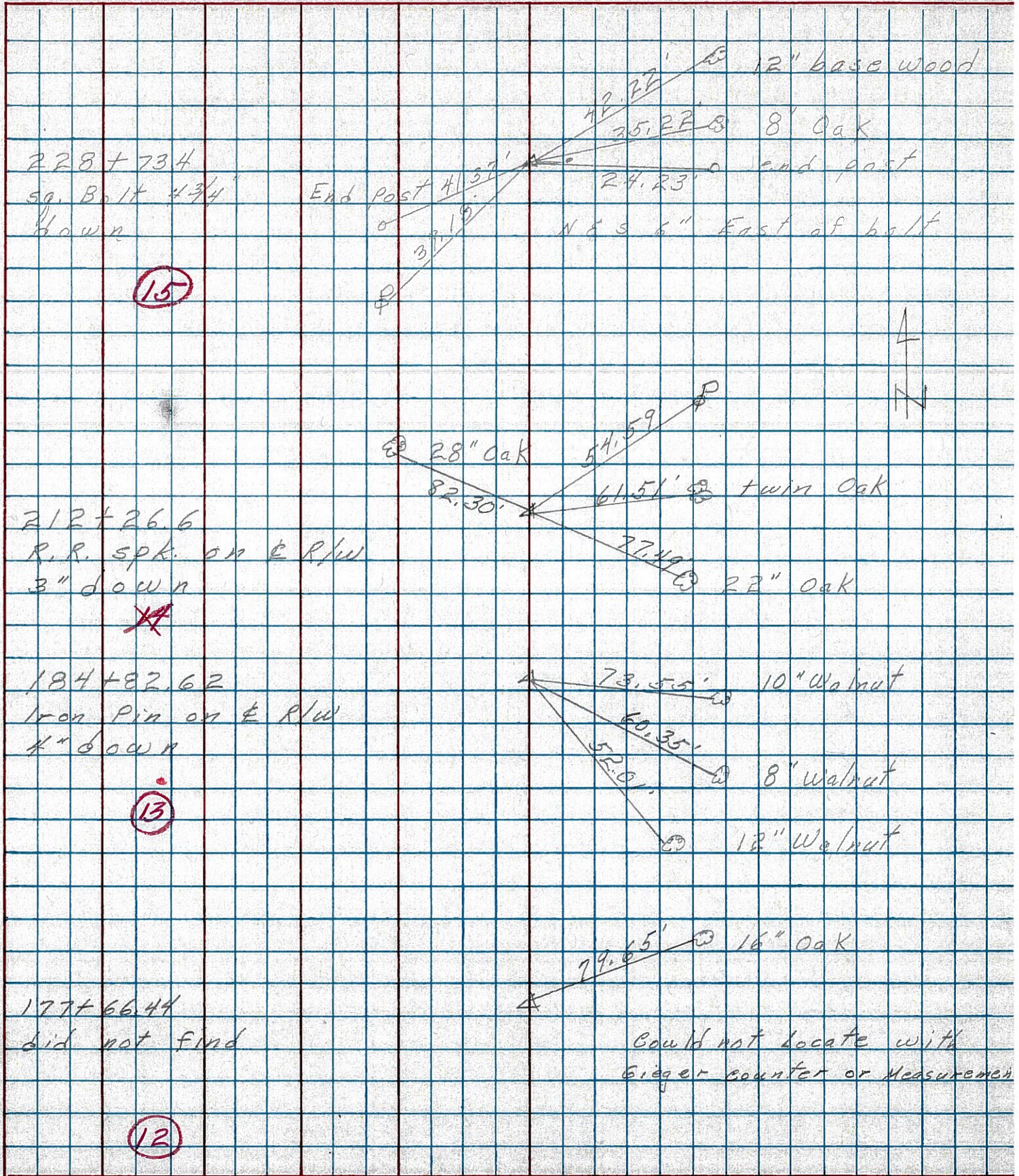
COUNTY Seneca DATE 3-13-75

S. R. 231 WEATHER

SEC. B TEMP. 28°

DESCRIPTION Wyandot Co. Line to U.S. 224 JOB NO.

LEFT CENTER LINE RIGHT



PERSONNEL	TITLE	PERSONNEL	TITLE	COUNTY	Seneca	DATE	10-30-69
Schneider				S. R.	231	WEATHER	Fair
Mosser				SEC.	B	TEMP.	40°
Barbour							
Potts							

DESCRIPTION Wynnot Co. Line to Tiffin JOB NO. \_\_\_\_\_

	LEFT	CENTER LINE	RIGHT
⑬	233+82.5 R.R. spk. on E of R/W 4" down  8676		
⑮	228+73.4 sq. iron bolt 1/3" down  8675		
	212+26.6 R.R. spk. on E of R/W 3" down  8674		
⑬	184+82.62 Iron pin on E of R/W 4" down  8673		
⑫	177+66.44 did not find  8672		