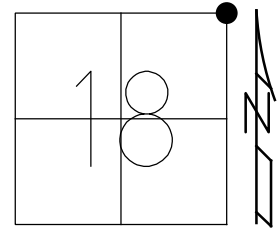


O.D.O.T. DISTRICT 2 SURVEY OFFICE (USE ONLY)

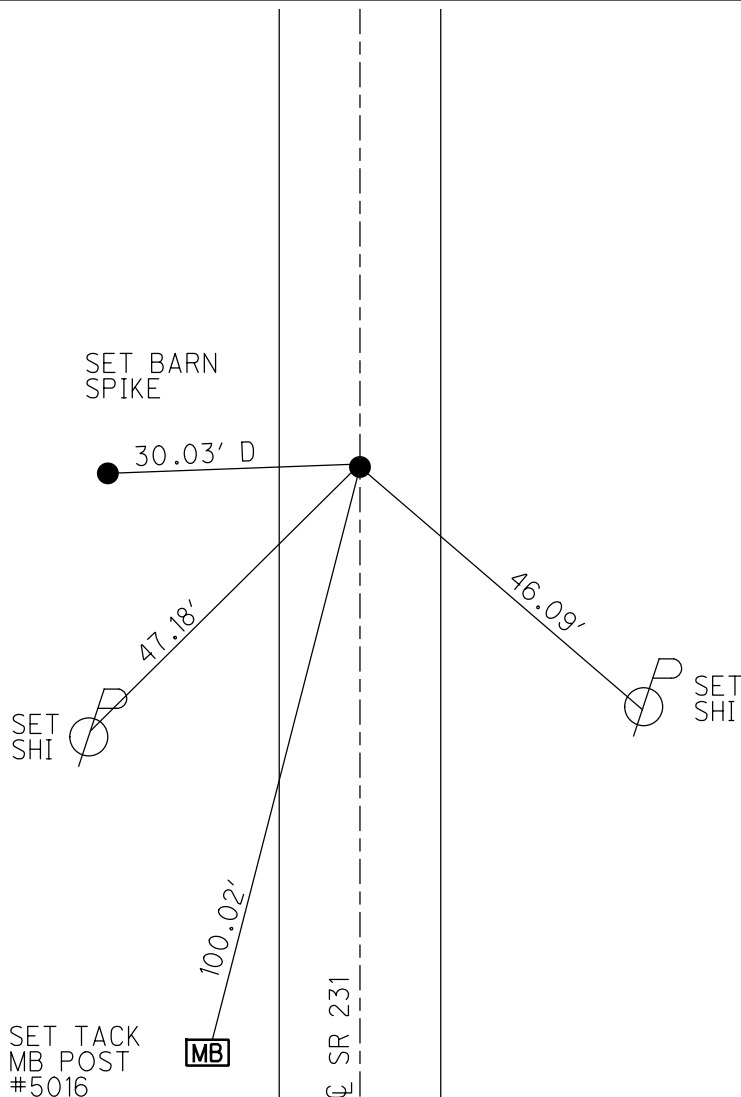
PERSONNEL \_\_\_\_\_ REFERENCE NO. 14 SHEET 18 OF 34  
 NOTES RHOADES DATE 11/3/23 ROUTE SR 231  
 H.C. AUBLE WEATHER SUNNY COUNTY SENECA  
 R.C. ASTON TEMP. 45° TOWNSHIP EDEN  
 \_\_\_\_\_ NIESE \_\_\_\_\_ SECTION 18  
 DWG BY RHOADES PID 95780 T 1 N R 15 E

TYPE MONUMENT MAG/WASHER  
 ON SURFACE - ~~BELOW~~ ON  
 OFFSET ☐ PAVEMENT ON LT : RT  
9.4' TO RT EDGE PAVEMENT  
 STATION: 211+82



HORZ.DATUM: NAD83(2011) GEOID: NAVD88 2018  
 GRID: NORTHING: 505098.024 EASTING: 17823675.574

RECORD:  
 STA. 211+37.31  
 FD R.R.SPIKE  
 5" DOWN  
 3/13/75  
 FD MINE SPIKE  
 1 1/2" DOWN  
 12/17/87, CRONIN  
 FD LG.R.R.SPIKE  
 2" DOWN  
 6/19/92  
 SET P.K./WASHER  
 8/21/97, MB  
 SET MAG/WASHER  
 6/8/04, MC  
 FD MAG/WASHER  
 8/16/04, MC  
 FD MAG/WASHER  
 REF14  
 3/27/19  
 8/16/19, JFO  
 FD MAG/WASHER  
 REF14  
 4/19/23, TDN  
 SET MAG/WASHER  
 11/3/23, DSA



O.D.O.T. DISTRICT 2 SURVEY OFFICE (USE ONLY)

PERSONNEL

REFERENCE NO. 14

SHEET 17 OF 33

NOTES CANTERBURY

DATE 6/20/97

ROUTE SR 231

H.C. CANTERBURY

WEATHER SUNNY

COUNTY SENECA

R.C. ROUSOS

TEMP. 89°

TOWNSHIP EDEN

SECTION 18

DWG BY NIESE PID 107060

T 1 N R 15 E

TYPE MONUMENT LG R.R. SPIKE

~~ON SURFACE~~ - BELOW 4"

OFFSET  $\phi$  PAVEMENT ON LT : RT

9.4' TO RT EDGE PAVEMENT

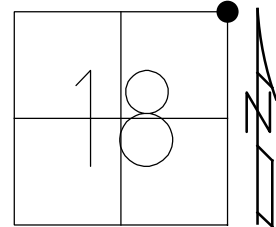
STATION: 211+82

HORZ.DATUM: NAD83(2011)

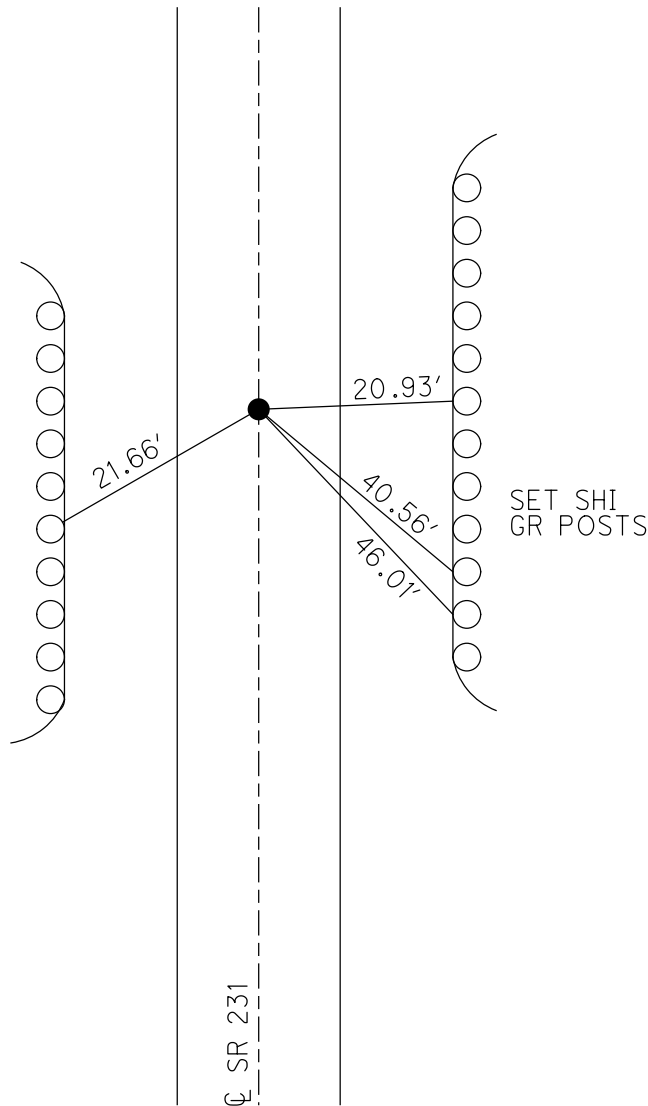
GEOID: 2012A

GRID: NORTHING: 505098.024

EASTING: 17823675.574



- RECORD:  
 STA. 211+37.31  
 FD R.R.SPIKE  
 5" DOWN  
 3/13/75  
 FD MINE SPIKE  
 1 1/2" DOWN  
 12/17/87, CRONIN  
 FD LG.R.R.SPIKE  
 2" DOWN  
 6/19/92  
 SET P.K./WASHER  
 8/21/97, MB  
 SET MAG/WASHER  
 6/8/04, MC  
 FD MAG/WASHER  
 8/16/04, MC  
 FD MAG/WASHER  
 REF14  
 3/27/19  
 8/16/19, JFO



# O.D.O.T. DISTRICT 2 SURVEY OFFICE

PERSONNEL

REFERENCE NO. 14

SHEET 17 OF 27

NOTES Canterbury

H.C. Canterbury

R.C. Rausas

Drawn by Rausas

DATE 6-20-97

WEATHER Sunny

TEMP. + 89°

ROUTE 231

COUNTY SENECA

TOWNSHIP EDEN

SECTION 7, 8, 18, 17

T. L. N. R. 15 E

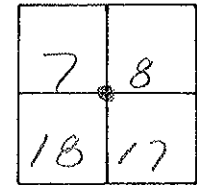
TYPE MONUMENT Lg. RR Spik

ON SURFACE - BELOW 9"

LEFT- & PAV'T. - RIGHT ON &

9.4 TO RT EDGE PAVEMENT

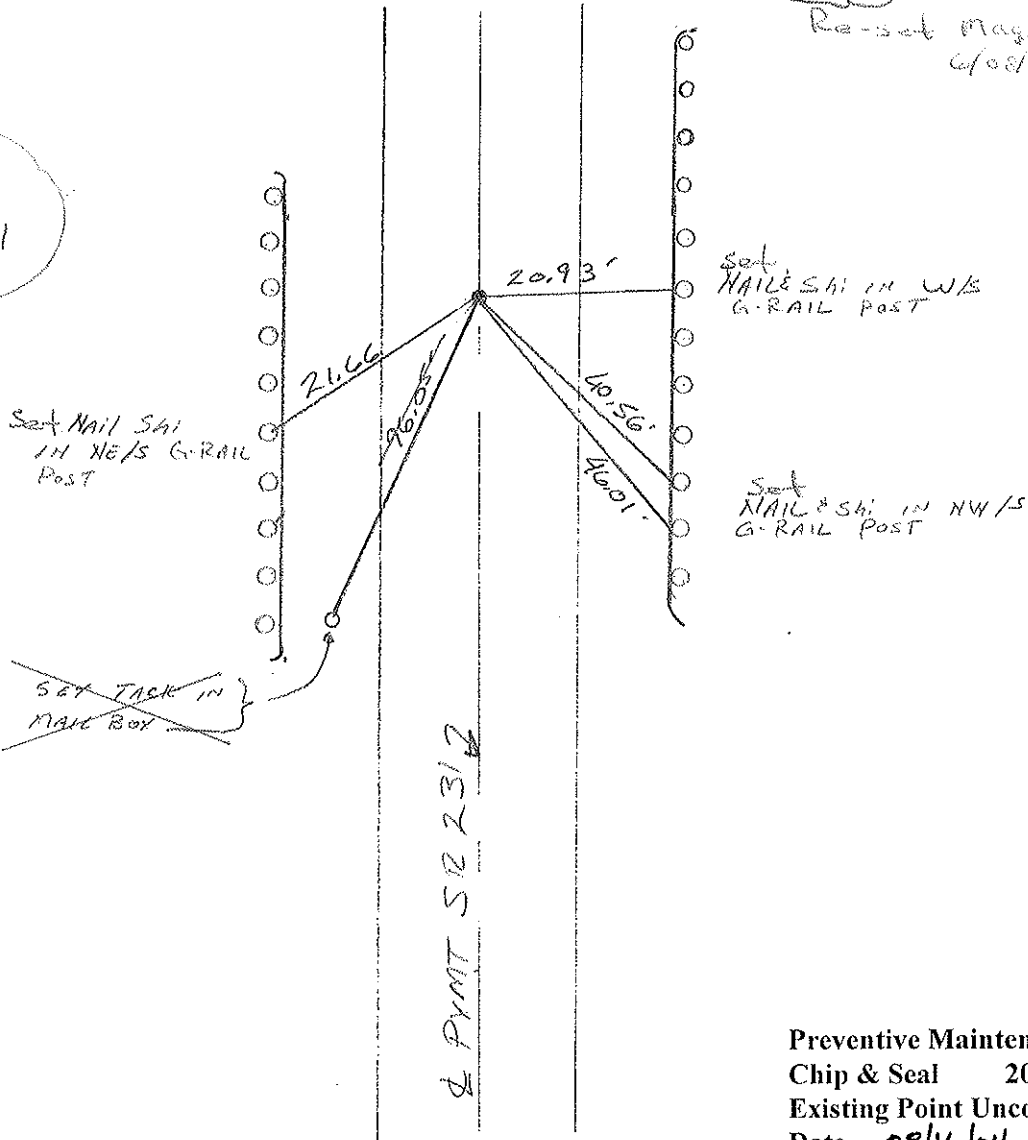
S.L.M. 6+456.22 M 211+82



Reset PK/WASHER  
8-21-97  
MB

Re-set Magdail/washer  
6/08/04

RECORD  
211+37.31  
6-19-92



Preventive Maintenance  
Chip & Seal 2004  
Existing Point Uncovered  
Date 08/16/04 MC

O.D.O.T. DISTRICT 2 SURVEY OFFICE

2

PERSONNEL \_\_\_\_\_

REFERENCE NO. \_\_\_\_\_

SHEET \_\_\_\_\_ OF \_\_\_\_\_

NOTES Cronin

H.C. Ripple

R.C. Barbour

Geyman

DATE 12/17/87

WEATHER overcast

TEMP. 30°

ROUTE S.R. # 231

COUNTY Seneca

TOWNSHIP Eden

SECTION 18

T 1 N R 15 E

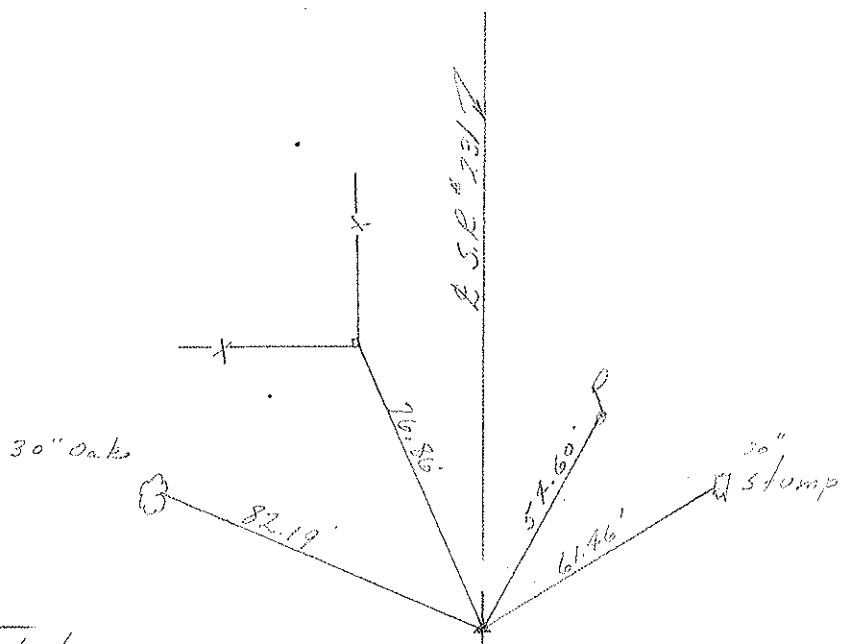
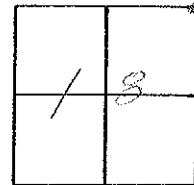
TYPE MONUMENT minc spike

ON SURFACE - BELOW 1 1/2" below

LEFT - & PAV'T. - RIGHT & Pav't.

\_\_\_\_ TO \_\_\_\_ EDGE PAVEMENT

S.L.M. \_\_\_\_\_



4

212 + 26.60  
P.R. spike 5" below  
surface.  
 From sheet S; 3-13-75