

O.D.O.T. DISTRICT 2 SURVEY OFFICE (USE ONLY)

PERSONNEL

REFERENCE NO. 14 A

SHEET 19 OF 34

NOTES RHOADES

DATE 11/3/23

ROUTE SR 231

H.C. AUBLE

WEATHER SUNNY

COUNTY SENECA

R.C. ASTON

TEMP. 45°

TOWNSHIP EDEN

NIESE

SECTION 7

DWG BY RHOADES

PID 95780

T 1 N R 15 E

TYPE MONUMENT MAG/WASHER

ON SURFACE - ~~BELOW~~ ON

OFFSET ☉ PAVEMENT 1.2' ~~ET~~ : RT

8.1' TO RT EDGE PAVEMENT

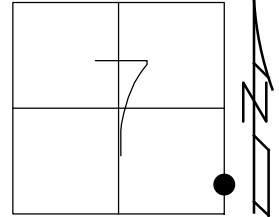
STATION: 217+42

HORZ. DATUM: NAD83(2011)

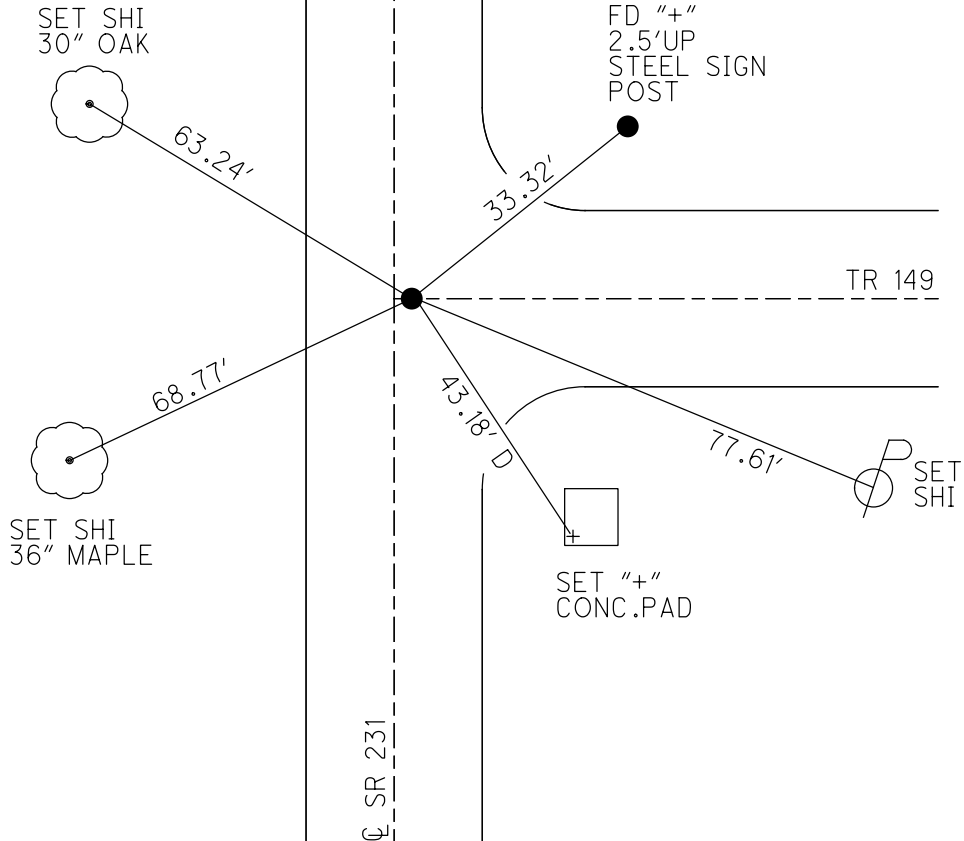
GEOID: NAVD88 2018

GRID: NORTHING: 505647.091

EASTING: 1783686.010



RECORD:
 FD LG.R.R.SPIKE
 2" DOWN
 6/20/97, MC
 SET P.K./WASHER
 8/21/97, MB
 SET MAG/WASHER
 6/9/04, MC
 FD MAG/WASHER
 8/16/04, MC
 FD MAG/WASHER
 REFA14
 3/27/19
 8/16/19, JFO
 FD MAG/WASHER
 REF14A
 4/19/23, TDN
 SET MAG/WASHER
 11/3/23, DSA



O.D.O.T. DISTRICT 2 SURVEY OFFICE (USE ONLY)

PERSONNEL

REFERENCE NO. 14 A

SHEET 18 OF 33

NOTES CANTERBURY

DATE 6/20/97

ROUTE SR 231

H.C. CANTERBURY

WEATHER SUNNY

COUNTY SENECA

R.C. ROUSOS

TEMP. 89°

TOWNSHIP EDEN

GEYMAN

DWG BY NIESE

PID 107060

SECTION 7

T 1 N R 15 E

TYPE MONUMENT LG.R.R.SPIKE

~~ON SURFACE~~ - BELOW 2"

OFFSET ☉ PAVEMENT 1.2' ~~LT~~ : RT

8.1' TO RT EDGE PAVEMENT

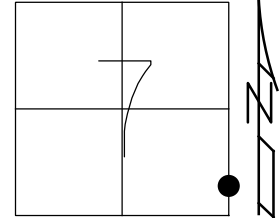
STATION: 217+42

HORZ.DATUM: NAD83(2011)

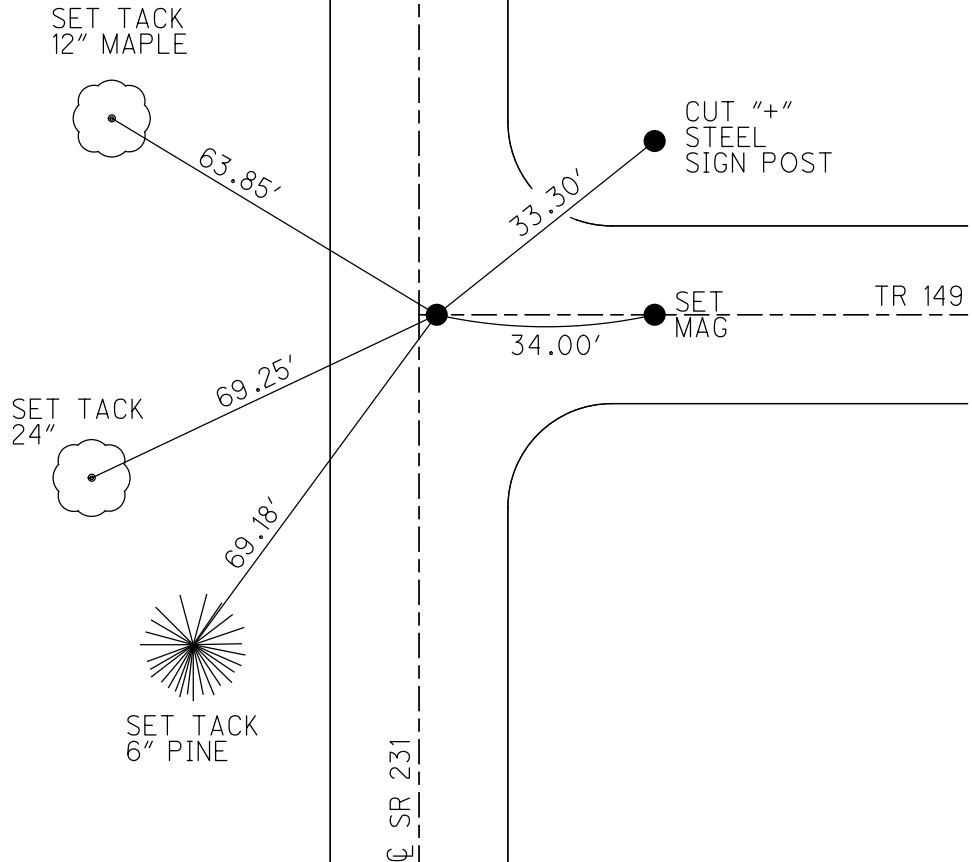
GEOID: 2012A

GRID: NORTHING: 505647.091

EASTING: 1783686.010



RECORD:
 FD LG.R.R.SPIKE
 2" DOWN
 6/20/97, MC
 SET P.K./WASHER
 8/21/97, MB
 SET MAG/WASHER
 6/9/04, MC
 FD MAG/WASHER
 8/16/04, MC
 FD MAG/WASHER
 REFA14
 3/27/19
 8/16/19, JFO



O.D.O.T. DISTRICT 2 SURVEY OFFICE

PERSONNEL _____

REFERENCE NO. _____

SHEET 18 OF 27

NOTES CANTERBURY

H.C. CANTERBURY

R.C. Rousos

Drawn by Rousos

DATE 6-20-97

WEATHER _____

TEMP. _____

ROUTE SR 231

COUNTY SENECA

TOWNSHIP EDEN

SECTION 7-8

T/ N R I S E

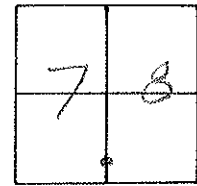
TYPE MONUMENT Lg RR SPK SET mag/washer

ON SURFACE - BELOW 2" Below 06/09/04

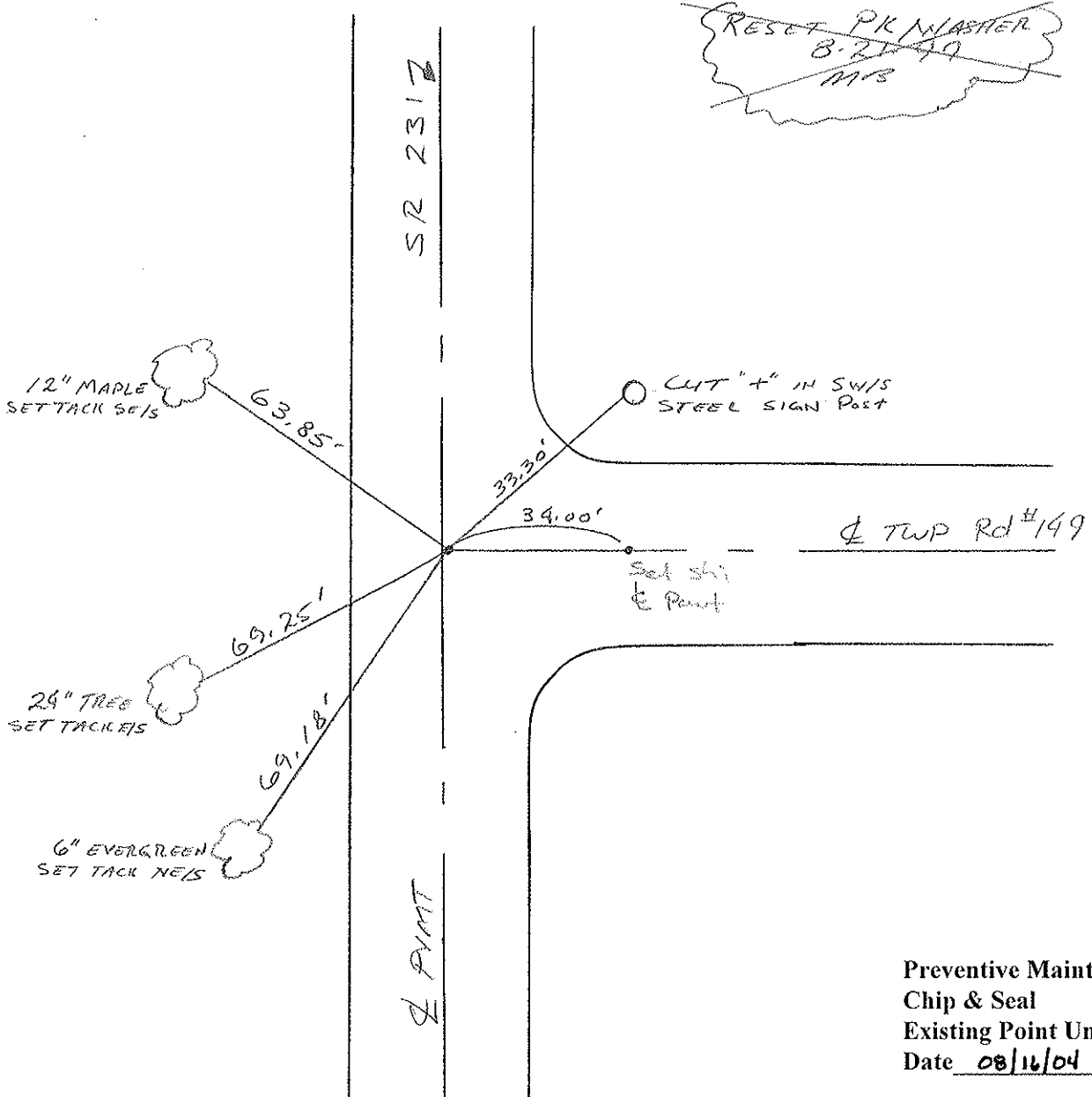
LEFT- C PAV'T. - RIGHT 1.2' RT

8.1 TO RT EDGE PAVEMENT

S.L.M. 6+626.94 M 217+42



~~RESET PK W/ASHER
8-21-99
M/S~~



Preventive Maintenance
Chip & Seal 2004
Existing Point Uncovered
Date 08/16/04 MC