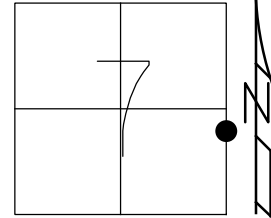


O.D.O.T. DISTRICT 2 SURVEY OFFICE (USE ONLY)

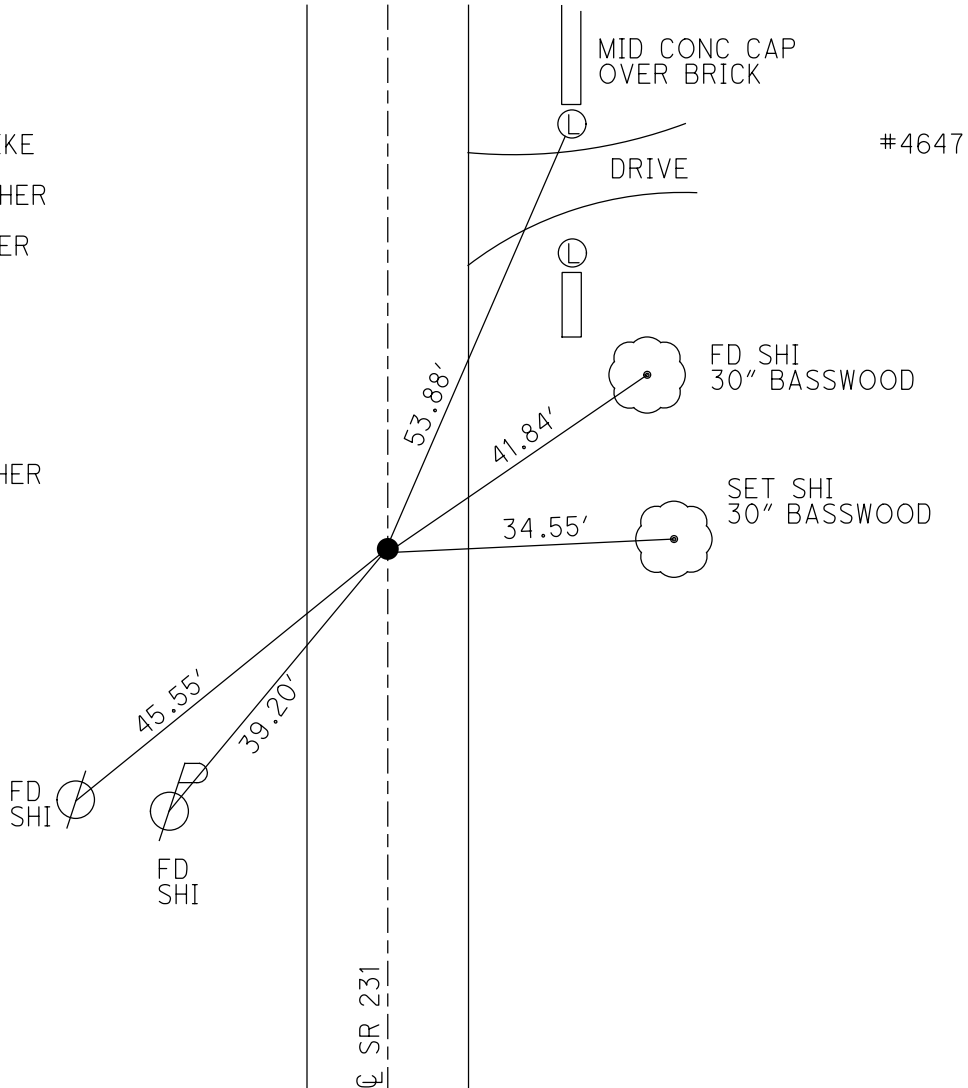
PERSONNEL _____ REFERENCE NO. 15 SHEET 20 OF 34
 NOTES RHOADES DATE 11/3/23 ROUTE SR 231
 H.C. AUBLE WEATHER SUNNY COUNTY SENECA
 R.C. ASTON TEMP. 45° TOWNSHIP EDEN
 _____ NIESE SECTION 7
 DWG BY RHOADES PID 95780 T 1 N R 15 E

TYPE MONUMENT MAG/WASHER
 ON SURFACE - ~~BELOW~~ _____ ON _____
 OFFSET C PAVEMENT 0.5' LT : ~~RT~~
9.7' TO LT EDGE PAVEMENT
 STATION: 229+43



HORIZ.DATUM: NAD83(2011) GEOID: NAVD88 2018
 GRID: NORTHING: 506841.367 EASTING: 1783710.120

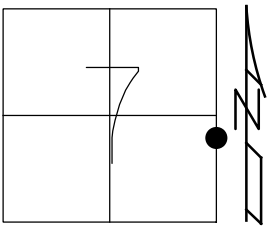
RECORD:
 STA.228+73.4
 FD SQ BOLT
 4 3/4" DOWN
 FD SM.R.R.SPIKE
 6/20/97, MC
 SET P.K./WASHER
 8/21/97, MB
 FD P.K./WASHER
 8/16/04, MC
 FD P.K.NAIL
 REF15
 3/27/19
 8/16/19, JFO
 FD P.K.SHANK
 REF15
 4/19/23, TDN
 SET MAG/WASHER
 11/3/23, DSA



O.D.O.T. DISTRICT 2 SURVEY OFFICE (USE ONLY)

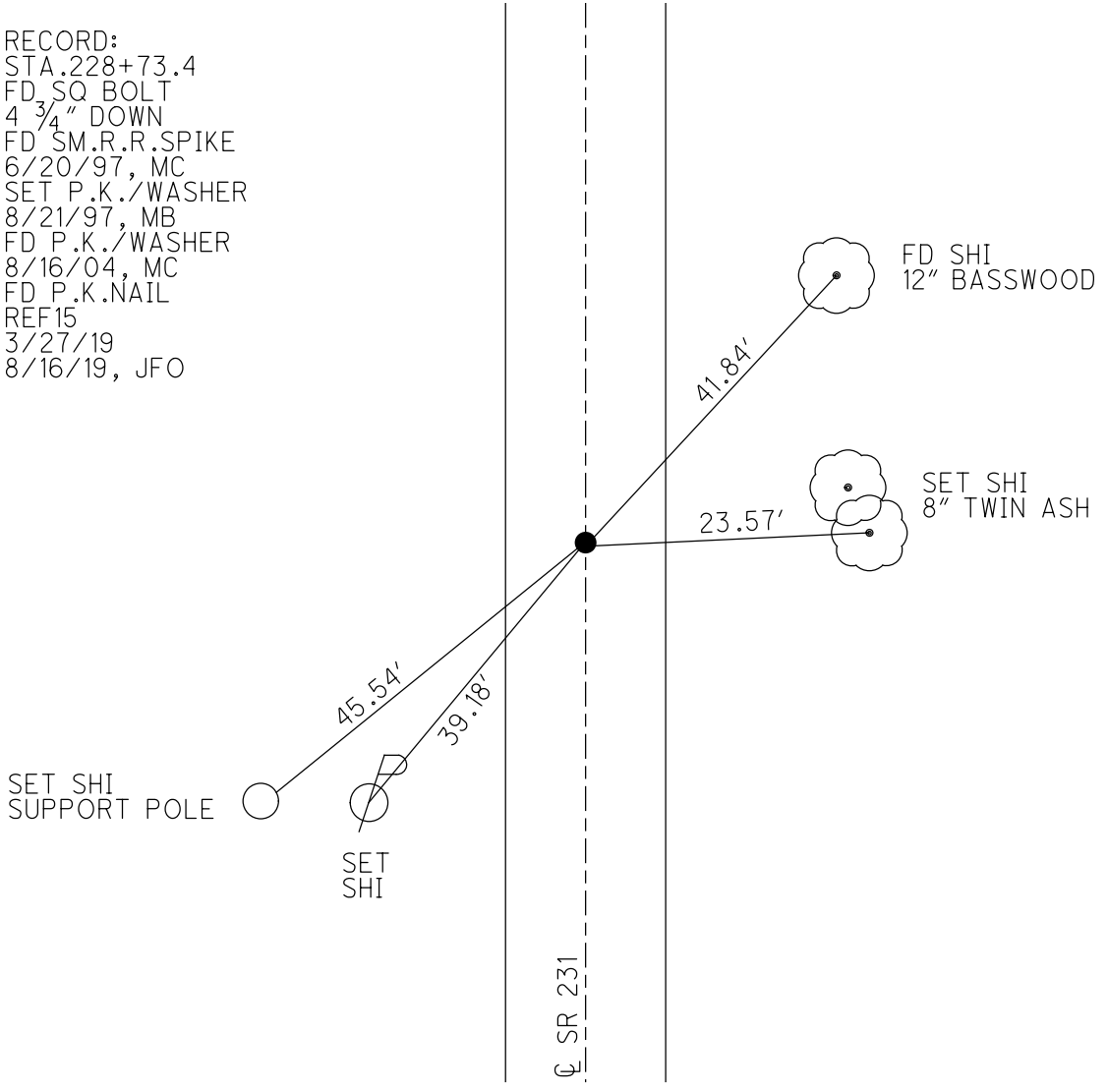
PERSONNEL _____ REFERENCE NO. 15 SHEET 19 OF 33
 NOTES CANTERBURY DATE 6/20/97 ROUTE SR 231
 H.C. CANTERBURY WEATHER SUNNY COUNTY SENECA
 R.C. ROUSOS TEMP. +89° TOWNSHIP EDEN
 DWG BY NIESE PID 107060 SECTION 7
 T 1 N R 15 E

TYPE MONUMENT SM.R.R.SPIKE
 ON SURFACE - ~~BELOW~~ ON
 OFFSET 0.5' LT : ~~RT~~
9.7' TO LT EDGE PAVEMENT
 STATION: 229+43



HORIZ.DATUM: NAD83(2011) GEOID: 2012A
 GRID: NORTHING: 506841.367 EASTING: 1783710.120

RECORD:
 STA.228+73.4
 FD SQ BOLT
 4 3/4" DOWN
 FD SM.R.R.SPIKE
 6/20/97, MC
 SET P.K./WASHER
 8/21/97, MB
 FD P.K./WASHER
 8/16/04, MC
 FD P.K.NAIL
 REF 15
 3/27/19
 8/16/19, JFO



O.D.O.T. DISTRICT 2 SURVEY OFFICE

PERSONNEL _____

REFERENCE NO. 15

SHEET 19 OF 27

NOTES CANTERBURY

H.C. CANTERBURY

R.C. Rouses

Drawn By Rouses

DATE 6-20-97

WEATHER SUNNY

TEMP. +89°

ROUTE SR-231

COUNTY SENeca

TOWNSHIP EDEN

SECTION 7.8

T.L.N.R. 15 E

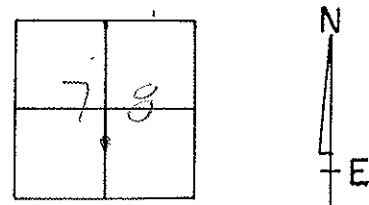
TYPE MONUMENT Sm. RR SPIC

ON SURFACE - ~~BELOW~~ SURFACE

LEFT-~~C~~ PAV'T. - RIGHT 0.15'

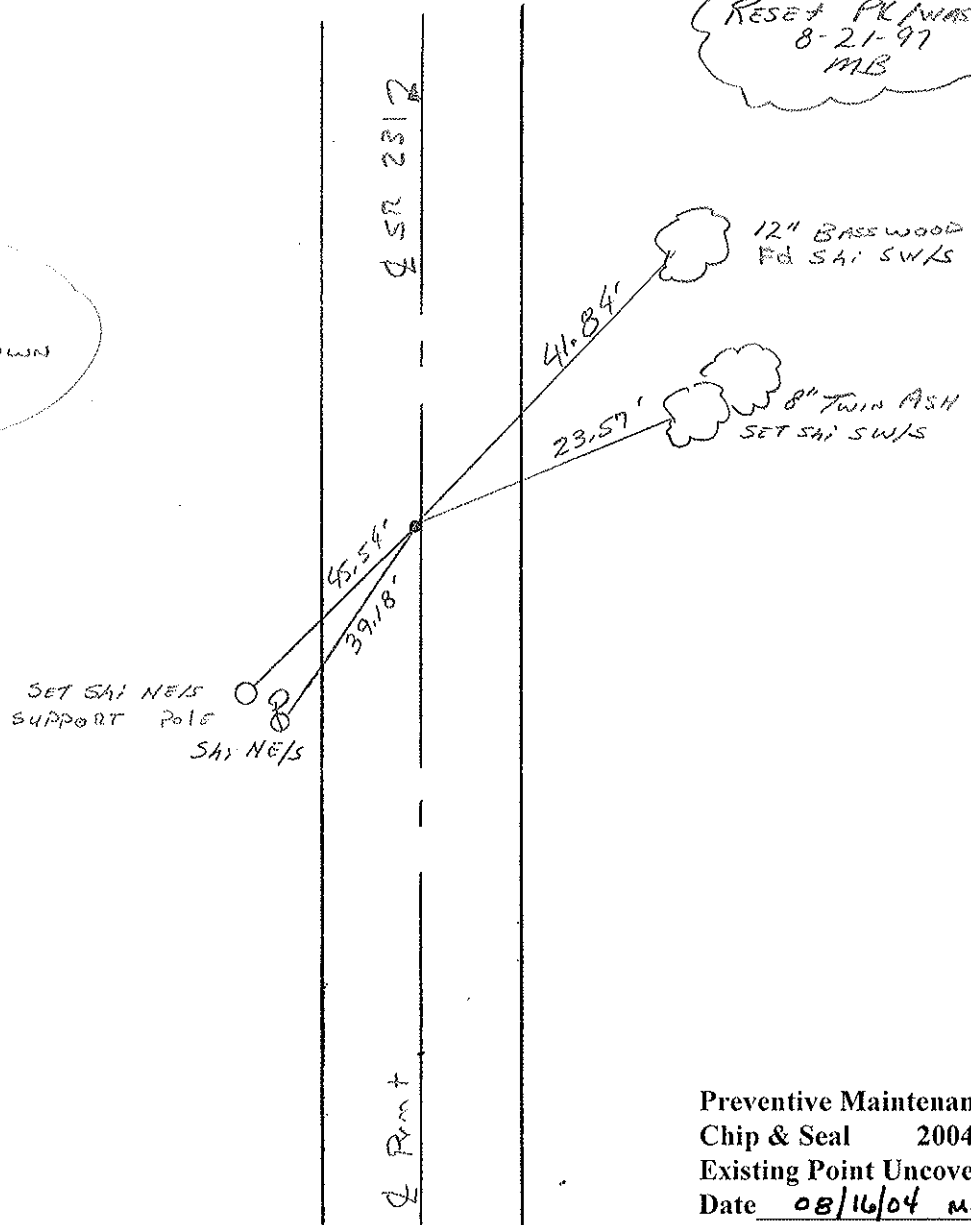
9.9' TO LT EDGE PAVEMENT

S.L.M. 6+993 M 229+43



RESET PL WASHER
8-21-97
MB Pd.

RECORD
228+784
Sq. Bolt 4 3/4" DOWN



Preventive Maintenance
Chip & Seal 2004
Existing Point Uncovered
Date 08/16/04 MC

O.D.O.T. DISTRICT 2 SURVEY OFFICE

3

PERSONNEL

REFERENCE NO. _____

SHEET _____ OF _____

NOTES Cronin

H.C. Ripple

R.G. Barbour

Geyman

DATE 12/17/87

WEATHER overcast

TEMP. 30°

ROUTE S.R.# 231

COUNTY Seneca

TOWNSHIP Eden

SECTION 7

T 1 N R 15 E

TYPE MONUMENT mine spike

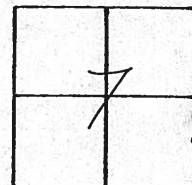
ON SURFACE - BELOW 6" below

LEFT- & PAV'T. - RIGHT ± Pav't.

TO _____ EDGE PAVEMENT

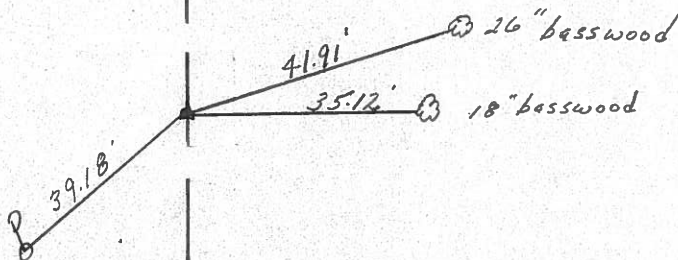
S.L.M. _____

15



S.R.# 231

228+73.40
sq. bolt 6"± below
surface



PERSONNEL TITLE PERSONNEL TITLE

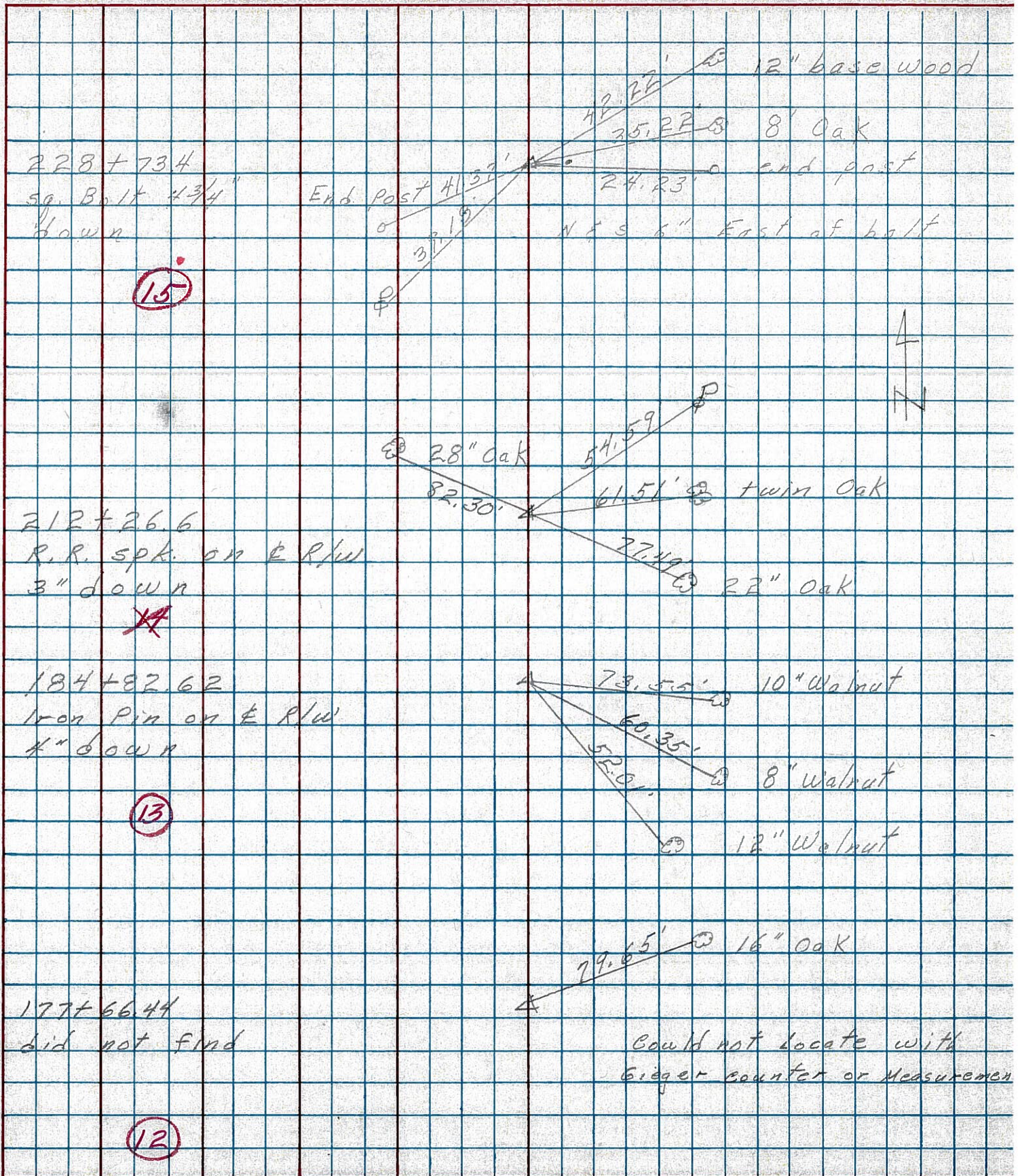
COUNTY Seneca DATE 3-13-75

S. R. 231 WEATHER

SEC. B TEMP. 28°

DESCRIPTION Wyandot Co. Line to U.S. RR JOB NO.

LEFT CENTER LINE RIGHT



PERSONNEL TITLE PERSONNEL TITLE
 Schneider _____
 Mosser _____
 Barbour _____
 Potts _____

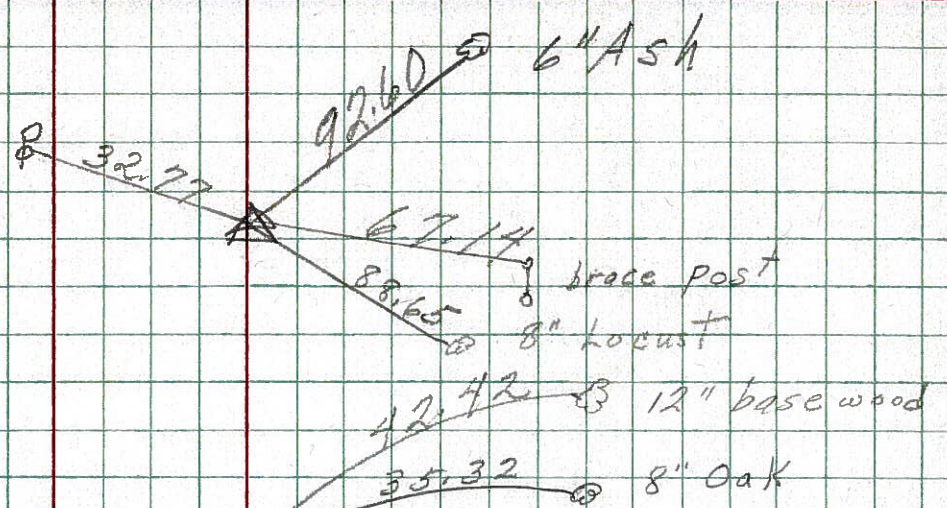
COUNTY Seneca DATE 10-30-69
 S. R. 231 WEATHER Fair
 SEC. B TEMP. 40°

DESCRIPTION Wyandot Co. Line to Tiffin JOB NO. _____
 LEFT CENTER LINE RIGHT

16

233+82.5
 R.R. spk. on E of R/W
 4" down

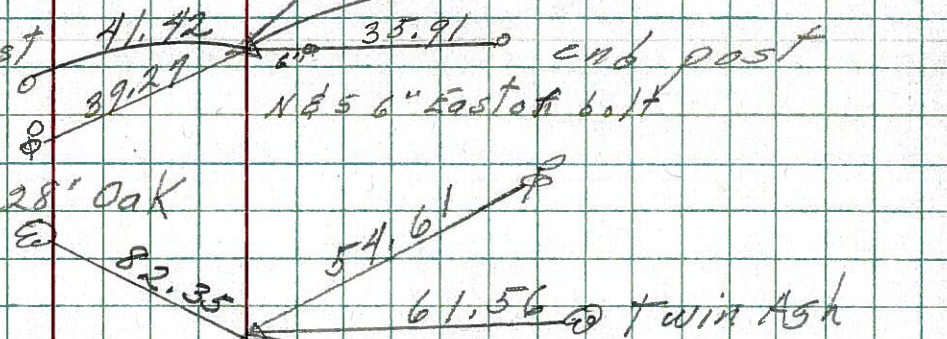
8676



15

228+73.4
 sq. iron bolt
 13" down

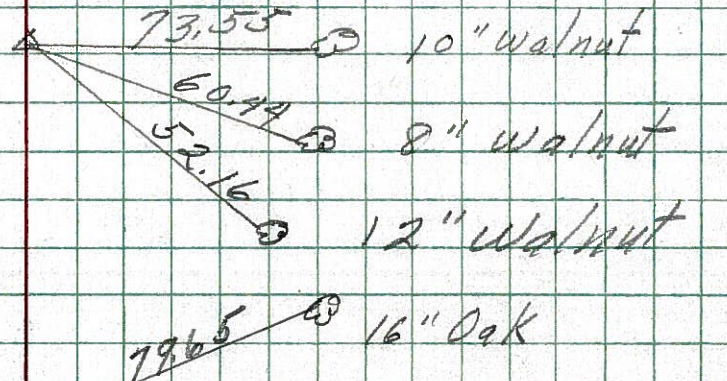
8675



13

184+82.62
 Iron pin on E of R/W
 4" down

8673



12

177+66.44
 did not find

8672