

O.D.O.T. DISTRICT 2 SURVEY OFFICE (USE ONLY)

PERSONNEL _____

REFERENCE NO. 16

SHEET 20 OF 33

NOTES CANTERBURY

DATE 6/20/97

ROUTE SR 231

H.C. CANTERBURY

WEATHER SUNNY

COUNTY SENECA

R.C. ROUSOS

TEMP. 85°

TOWNSHIP EDEN

SECTION 7

DWG BY NIESE

PID 107060

T 1 N R 15 E

TYPE MONUMENT SM R.R. SPIKE

~~ON SURFACE~~ - BELOW 4 1/2"

OFFSET \odot PAVEMENT 4.0' \pm : RT

5.8' TO RT EDGE PAVEMENT

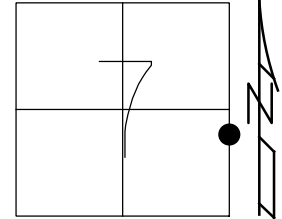
STATION: 234+52

HORZ.DATUM: NAD83(2011)

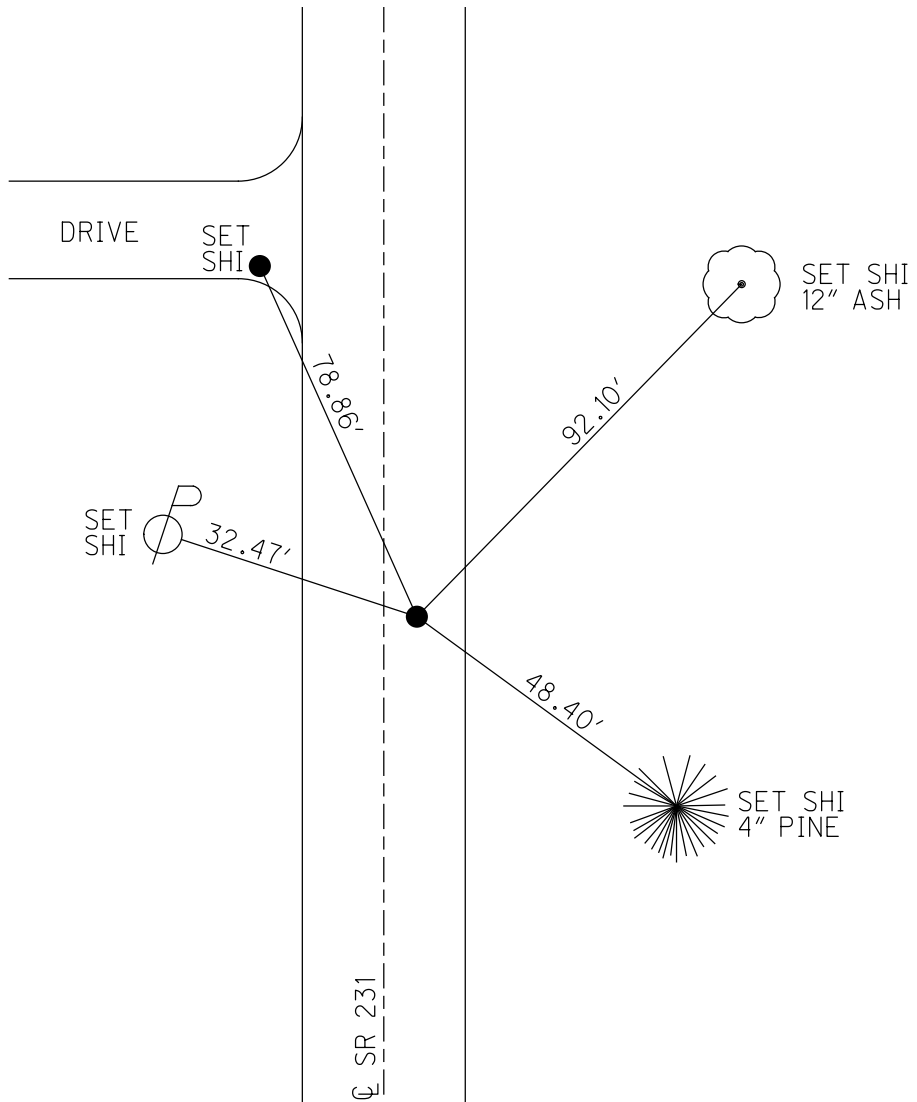
GEOID: 2012A

GRID: NORTHING: 507350.481

EASTING: 1783720.674



RECORD:
 STA.233+82.50
 FD R.R.SPIKE
 ON \odot R/W
 4 1/2" DOWN
 6/20/97, MC
 SET P.K./WASHER
 8/21/97, MB
 FD P.K./WASHER
 8/16/04, MC
 FD P.K.SHANK
 REF16
 3/27/19
 8/16/19, JFO



O.D.O.T. DISTRICT 2 SURVEY OFFICE

PERSONNEL

REFERENCE NO. 16

SHEET 20 OF 27

NOTES CANTERBURY

H.C. CANTERBURY

R.C. Rowles

Drawn By Rowles

DATE 6/20/97

WEATHER SUNNY

TEMP. +85°

ROUTE SR 231

COUNTY SENECA

TOWNSHIP EDEN

SECTION 7

T. 1 N. 15 E.

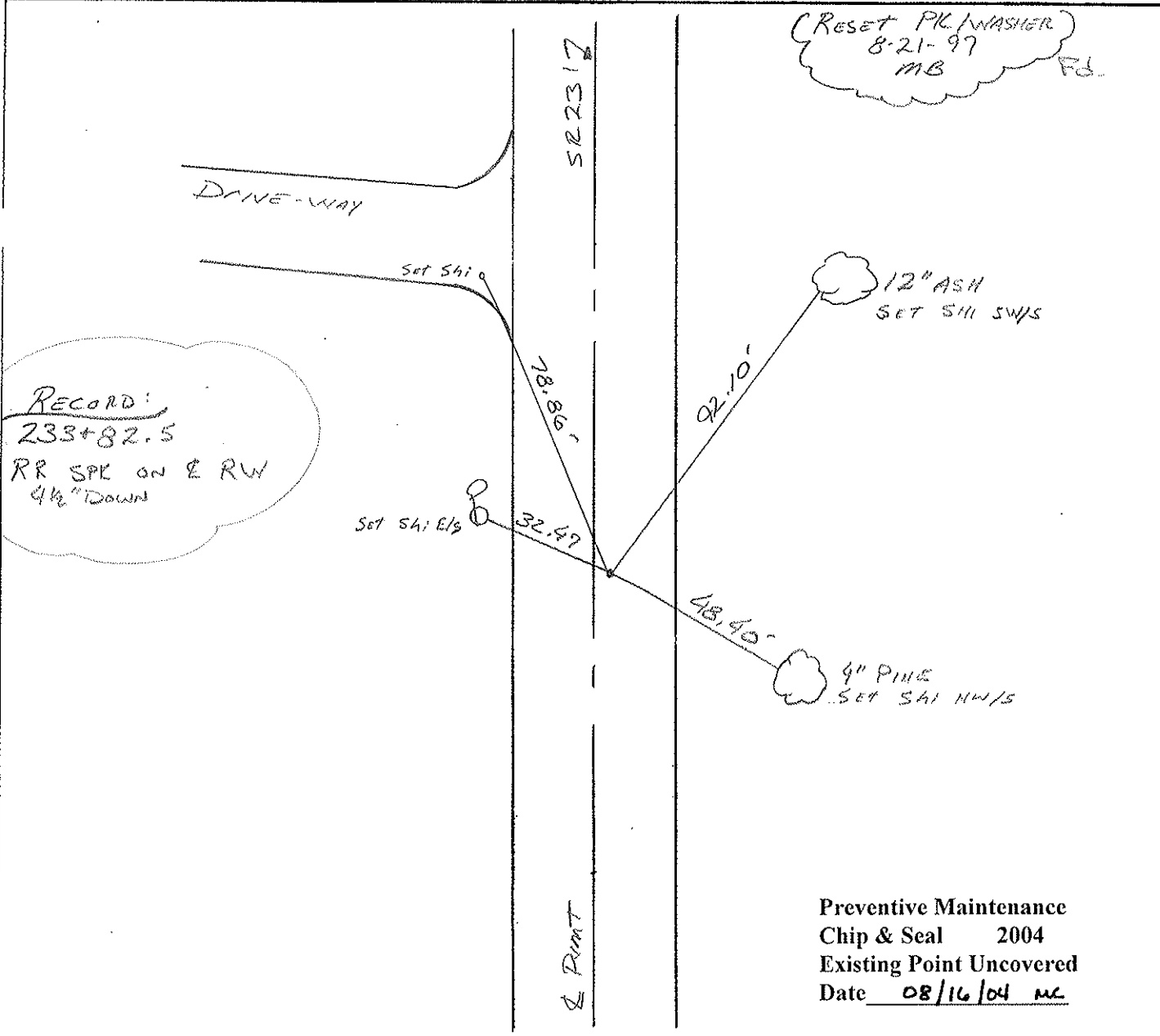
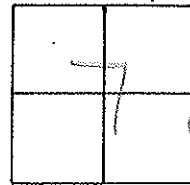
TYPE MONUMENT SM. RR. SPK

~~ON SURFACE~~ BELOW 4 1/2"

LEFT-~~C~~ PAV'T. - RIGHT 4.0' RT

5.8 TO RT EDGE PAVEMENT

S.L.M. 7+198.15 M Z34+52



(RESET PK/WASHER)
8-21-97
MB FB

RECORD:
233+82.5
RR SPK ON E RW
4 1/2" DOWN

Preventive Maintenance
Chip & Seal 2004
Existing Point Uncovered
Date 08/16/04 MC

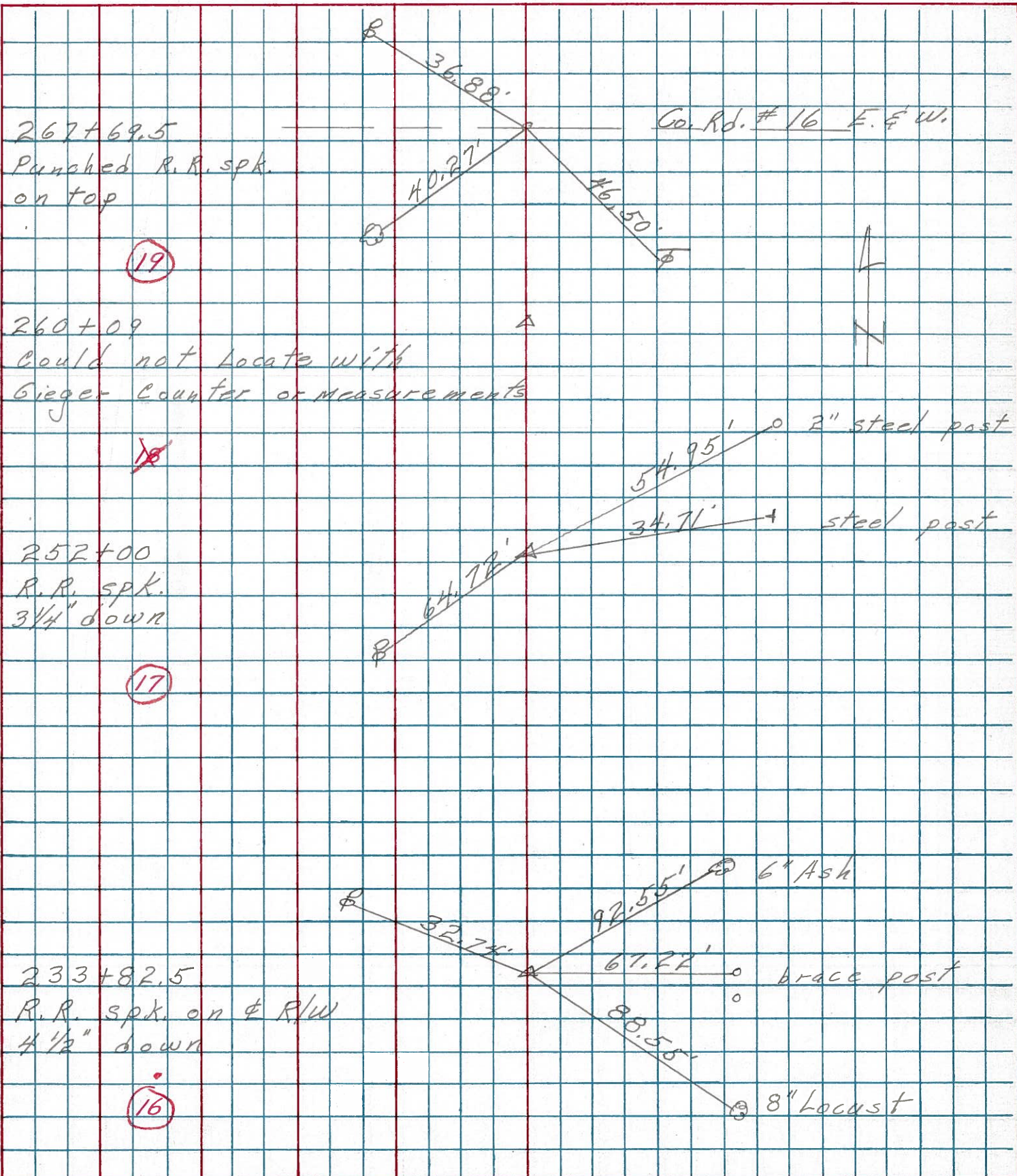
PERSONNEL TITLE PERSONNEL TITLE

COUNTY Seneca DATE 3-13-75

S. R. 231 WEATHER

SEC. B TEMP. 35°

DESCRIPTION Wyandot Co. Line to U.S. 224 JOB NO.



PERSONNEL TITLE PERSONNEL TITLE
 Schneider _____
 Mosser _____
 Barbour _____
 Potts _____

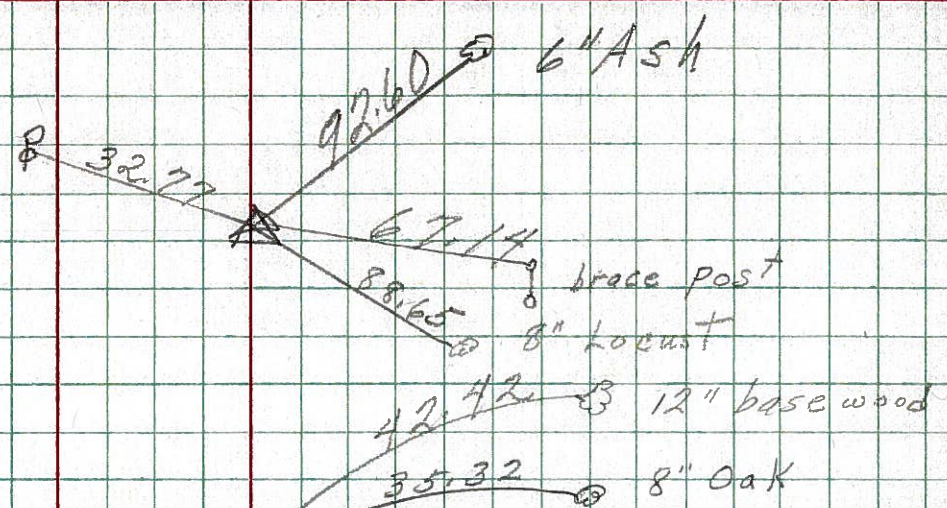
COUNTY Seneca DATE 10-30-69
 S. R. 231 WEATHER Fair
 SEC. B TEMP. 40°

DESCRIPTION Wyanot Co. Line to Tiffin JOB NO. _____
 LEFT CENTER LINE RIGHT

16

233+82.5
 R.R. spk. on E of R/W
 4" down

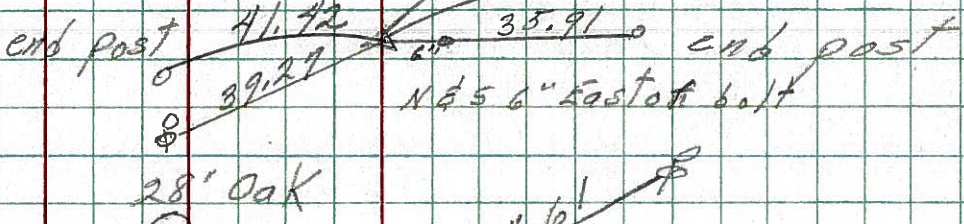
8676



15

228+73.4
 sq. iron bolt
 3" down

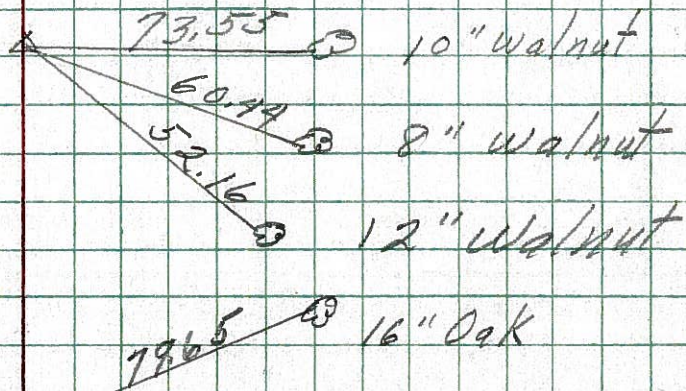
8675



13

184+82.62
 Iron pin on E of R/W
 4" down

8673



12

177+66.44
 did not find

8672