

O.D.O.T. DISTRICT 2 SURVEY OFFICE (USE ONLY)

PERSONNEL

REFERENCE NO. 16 A

SHEET 22 OF 34

NOTES RHOADES

DATE 11/6/23

ROUTE SR 231

H.C. AUBLE

WEATHER SUNNY

COUNTY SENECA

R.C. ASTON

TEMP. 48°

TOWNSHIP EDEN

NIESE

SECTION 7

DWG BY RHOADES PID 95780

T 1 N R 15 E

TYPE MONUMENT MAG/WASHER

ON SURFACE - ~~BELOW~~ ON

OFFSET ☉ PAVEMENT ON LT : RT

9.2' TO LT EDGE PAVEMENT

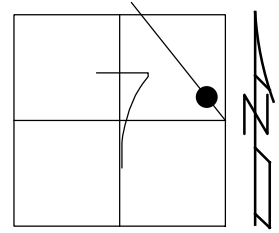
STATION: 239+64

HORZ. DATUM: NAD83(2011)

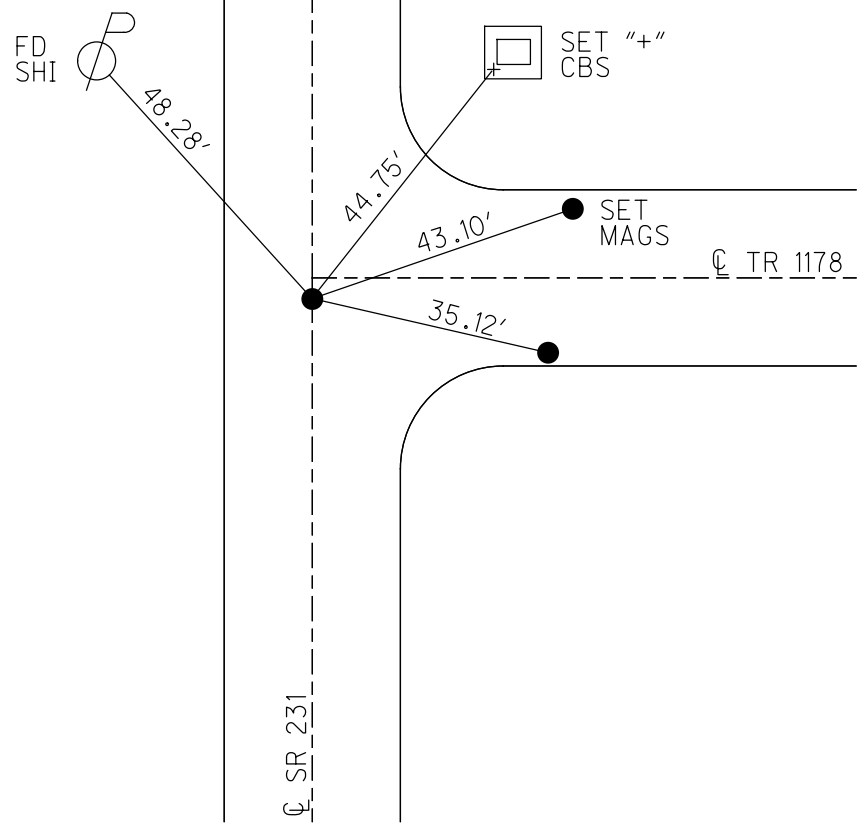
GEOID: NAVD88 2018

GRID: NORTHING: 507844.714

EASTING: 1783581.359



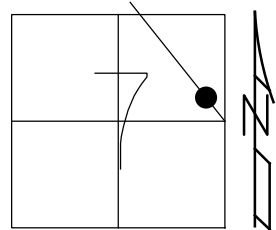
- RECORD:
 FD LG.R.R.SPIKE
 2" DOWN
 6/20/97, MB
 SET P.K./WASHER
 8/21/97, MB
 SET MAG/WASHER
 6/9/04
 FD MAG/WASHER
 8/16/04, MC
 FD MAG/WASHER
 REFA16
 3/27/19
 8/16/19, JFO
 FD MAG/WASHER
 REF16A
 4/19/23, TDN
 SET MAG/WASHER
 11/6/23, DSA



O.D.O.T. DISTRICT 2 SURVEY OFFICE (USE ONLY)

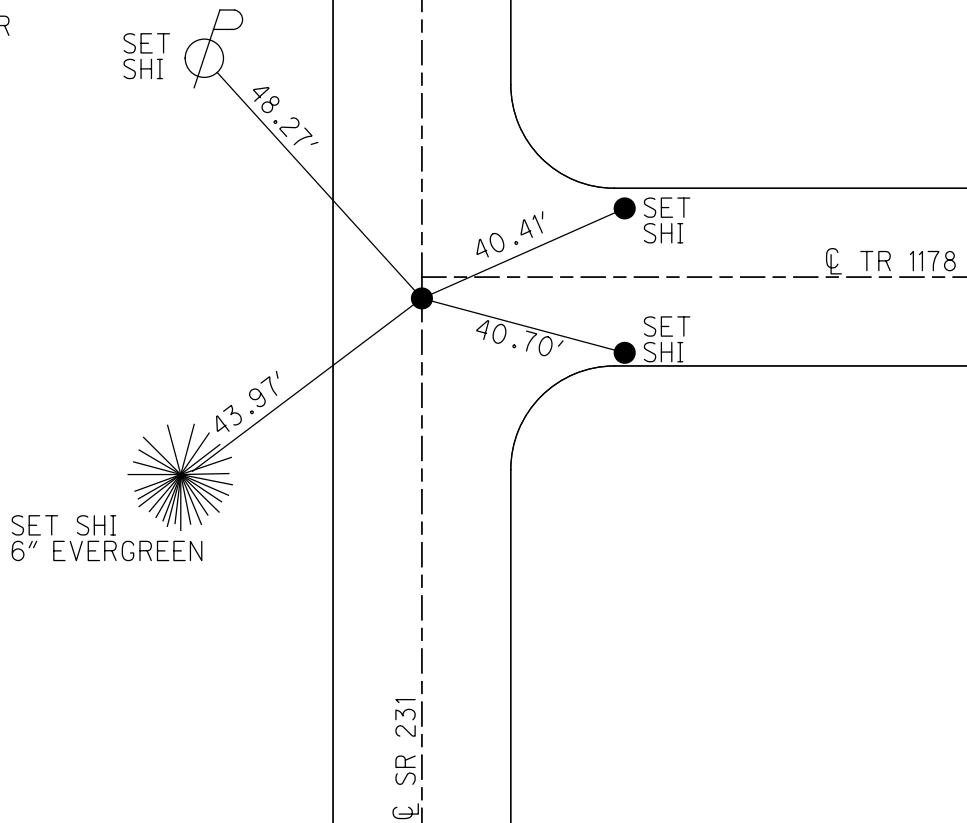
PERSONNEL _____ REFERENCE NO. 16 A SHEET 21 OF 33
 NOTES BARNHEISEL DATE 6/20/97 ROUTE SR 231
 H.C. ROUSOS WEATHER SUNNY COUNTY SENECA
 R.C. CANTERBURY TEMP. 85° TOWNSHIP EDEN
 DWG BY NIESE PID 107060 SECTION 7
 T 1 N R 15 E

TYPE MONUMENT LG.R.R.SPIKE
~~ON SURFACE~~ - BELOW 2"
 OFFSET ☐ PAVEMENT ON LT : RT
9.2' TO LT EDGE PAVEMENT
 STATION: 239+64



HORZ.DATUM: NAD83(2011) GEOID: 2012A
 GRID: NORTHING: 507844.714 EASTING: 1783581.359

RECORD:
 FD LG.R.R.SPIKE
 2" DOWN
 6/20/97, MB
 SET P.K./WASHER
 8/21/97, MB
 SET MAG/WASHER
 6/9/04
 FD MAG/WASHER
 8/16/04, MC
 FD MAG/WASHER
 REFA16
 3/27/19
 8/16/19, JFO



O.D.O.T. DISTRICT 2 SURVEY OFFICE

PERSONNEL _____

REFERENCE NO. _____

SHEET 21 OF 27

NOTES Barnhiser

H.C. Rousar

R.C. Canterbury

Drawn By Rousar

DATE 6/20/97

WEATHER Sunny

TEMP. +85°F

ROUTE S.R. 231

COUNTY Seneca

TOWNSHIP Eden

SECTION 7

T 1 N R 15 E

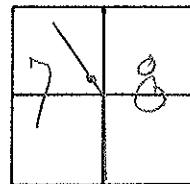
TYPE MONUMENT Lg RR SPIK Reset Mag/Washer 06/09/04

ON ~~SURFACE~~ - BELOW 2"

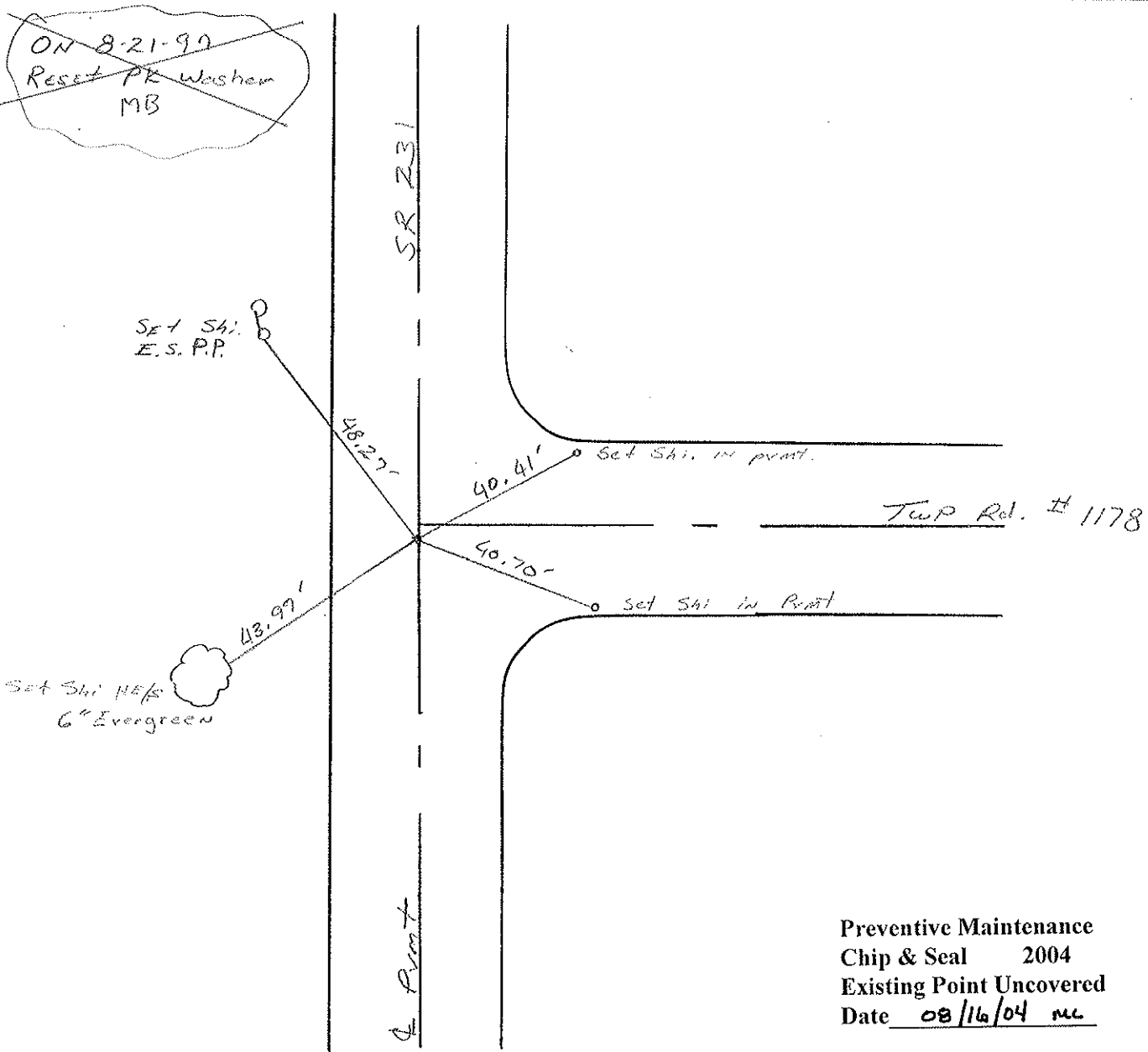
LEFT - & PAW'T. - RIGHT ON &

9.2' TOLT EDGE PAVEMENT

S.L.M. S.L.R. 7+306.10 M



~~ON 8-21-99
Reset PK Washer
MB~~



Preventive Maintenance
Chip & Seal 2004
Existing Point Uncovered
Date 08/16/04 mc