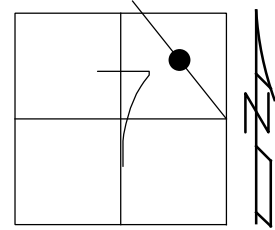


O.D.O.T. DISTRICT 2 SURVEY OFFICE (USE ONLY)

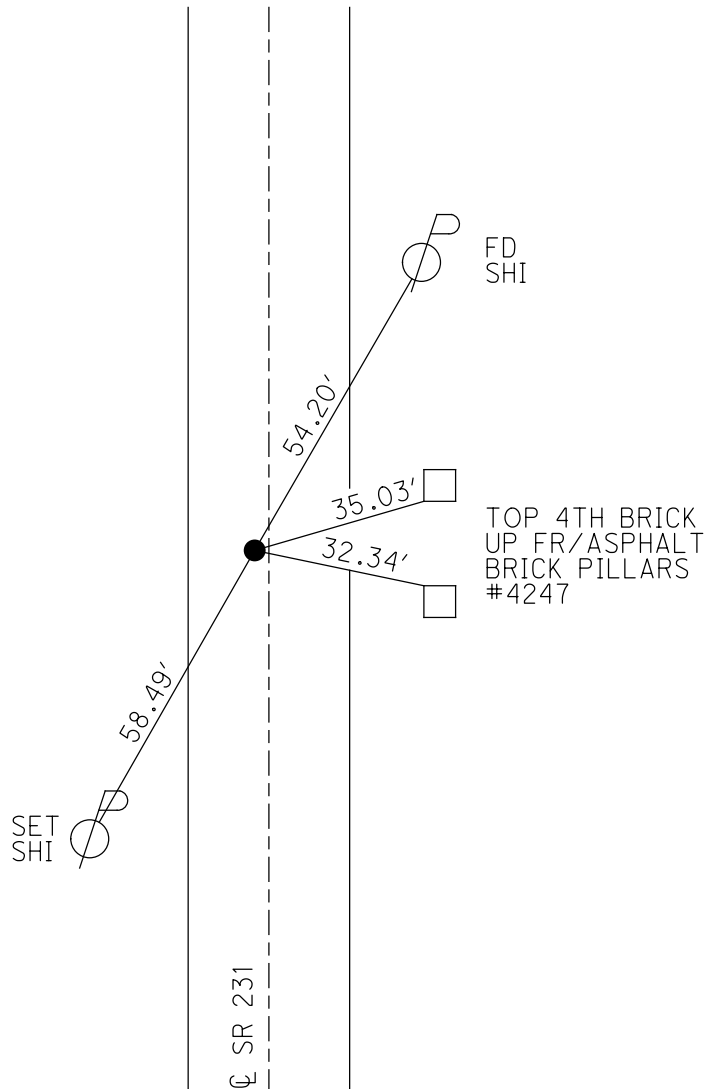
PERSONNEL _____ REFERENCE NO. 17 SHEET 23 OF 34
 NOTES RHOADES DATE 11/6/23 ROUTE SR 231
 H.C. AUBLE WEATHER SUNNY COUNTY SENECA
 R.C. ASTON TEMP. 48° TOWNSHIP EDEN
 _____ NIESE SECTION 7
 DWG BY RHOADES PID 95780 T 1 N R 15 E

TYPE MONUMENT MAG/WASHER
 ON SURFACE - ~~BELOW~~ ON
 OFFSET C PAVEMENT 1.2' LT : ~~RT~~
8.2' TO LT EDGE PAVEMENT
 STATION: 252+80



HORZ. DATUM: NAD83(2011) GEOID: NAVD88 2018
 GRID: NORTHING: 509098.900 EASTING: 1783226.213

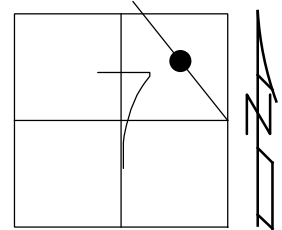
RECORD:
 STA. 252+00
 FD R.R. SPIKE
 3 1/4" DOWN
 FD LG. R.R. SPIKE
 6" DOWN
 6/20/97, MC
 SET P.K./WASHER
 9/11/97, MRC
 SET MAG/WASHER
 6/9/04, MC
 FD MAG/WASHER
 8/16/04, MC
 FD MAG/WASHER
 REF17
 3/27/19
 8/16/19, JFO
 FD MAG/WASHER
 REF17
 4/20/23, TDN
 SET MAG/WASHER
 11/6/23, DSA



O.D.O.T. DISTRICT 2 SURVEY OFFICE (USE ONLY)

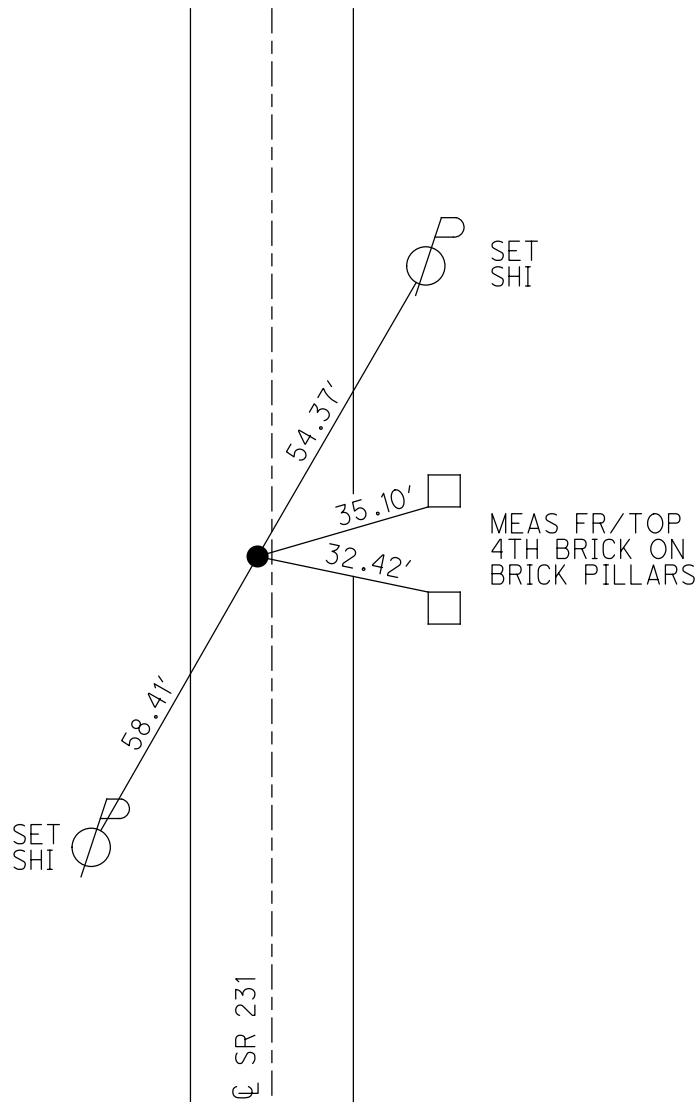
PERSONNEL _____ REFERENCE NO. 17 SHEET 22 OF 33
 NOTES CANTERBURY DATE 6/20/97 ROUTE SR 231
 H.C. CANTERBURY WEATHER SUNNY COUNTY SENECA
 R.C. ROUSOS TEMP. 85° TOWNSHIP EDEN
 DWG BY NIESE PID 107060 SECTION 7
 T 1 N R 15 E

TYPE MONUMENT LG.R.R.SPIKE
~~ON SURFACE~~ - BELOW 6"
 OFFSET C PAVEMENT 1.2' LT : ~~RT~~
8.2' TO LT EDGE PAVEMENT
 STATION: 252+80



HORIZ.DATUM: NAD83(2011) GEOID: 2012A
 GRID: NORTHING: 509098.900 EASTING: 1783226.213

RECORD:
 STA.252+00
 FD R.R.SPIKE
 3 1/4" DOWN
 FD LG.R.R.SPIKE
 6" DOWN
 6/20/97, MC
 SET P.K./WASHER
 9/11/97, MRC
 SET MAG/WASHER
 6/9/04, MC
 FD MAG/WASHER
 8/16/04, MC
 FD MAG/WASHER
 REF17
 3/27/19
 8/16/19, JFO



O.D.O.T. DISTRICT 2 SURVEY OFFICE

PERSONNEL _____

REFERENCE NO. 17

SHEET 22 OF 27

NOTES CANTERBURY

H.C. CANTERBURY

R.C. Rousos

Drawn By Rousos

DATE 6/20/97

WEATHER SUNNY

TEMP. 78.5"

ROUTE SR 231

COUNTY SENECA

TOWNSHIP EDEN

SECTION 7

T.1 N.R. 15 E

TYPE MONUMENT Lg RR SPIK

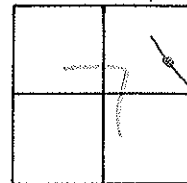
Reset mag/washer
06/09/04

ON SURFACE - BELOW 6"

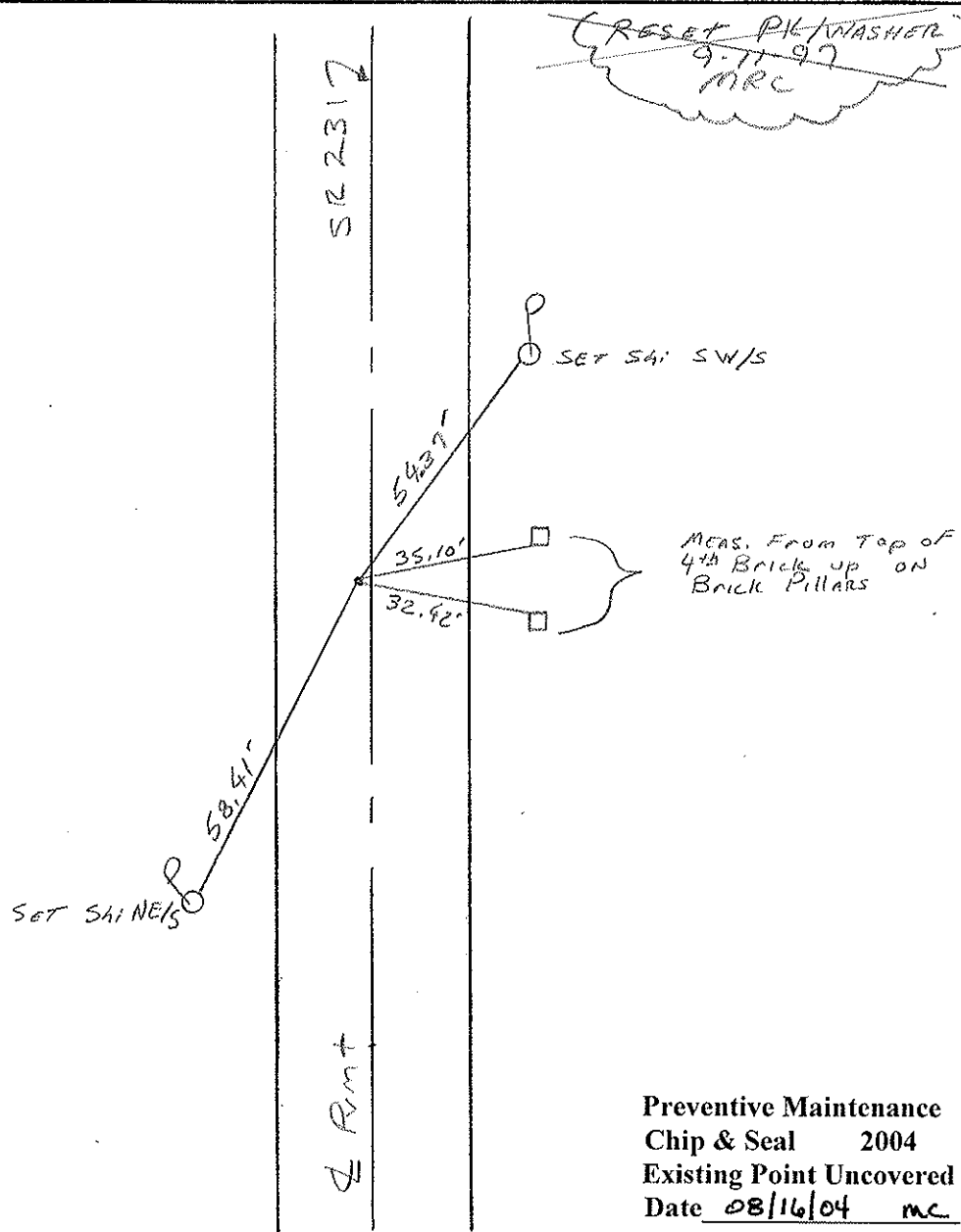
LEFT - C PAV'T. - RIGHT 1.2

8.2 TO Lt EDGE PAVEMENT

S.L.M. 7+705.2 M 252+80



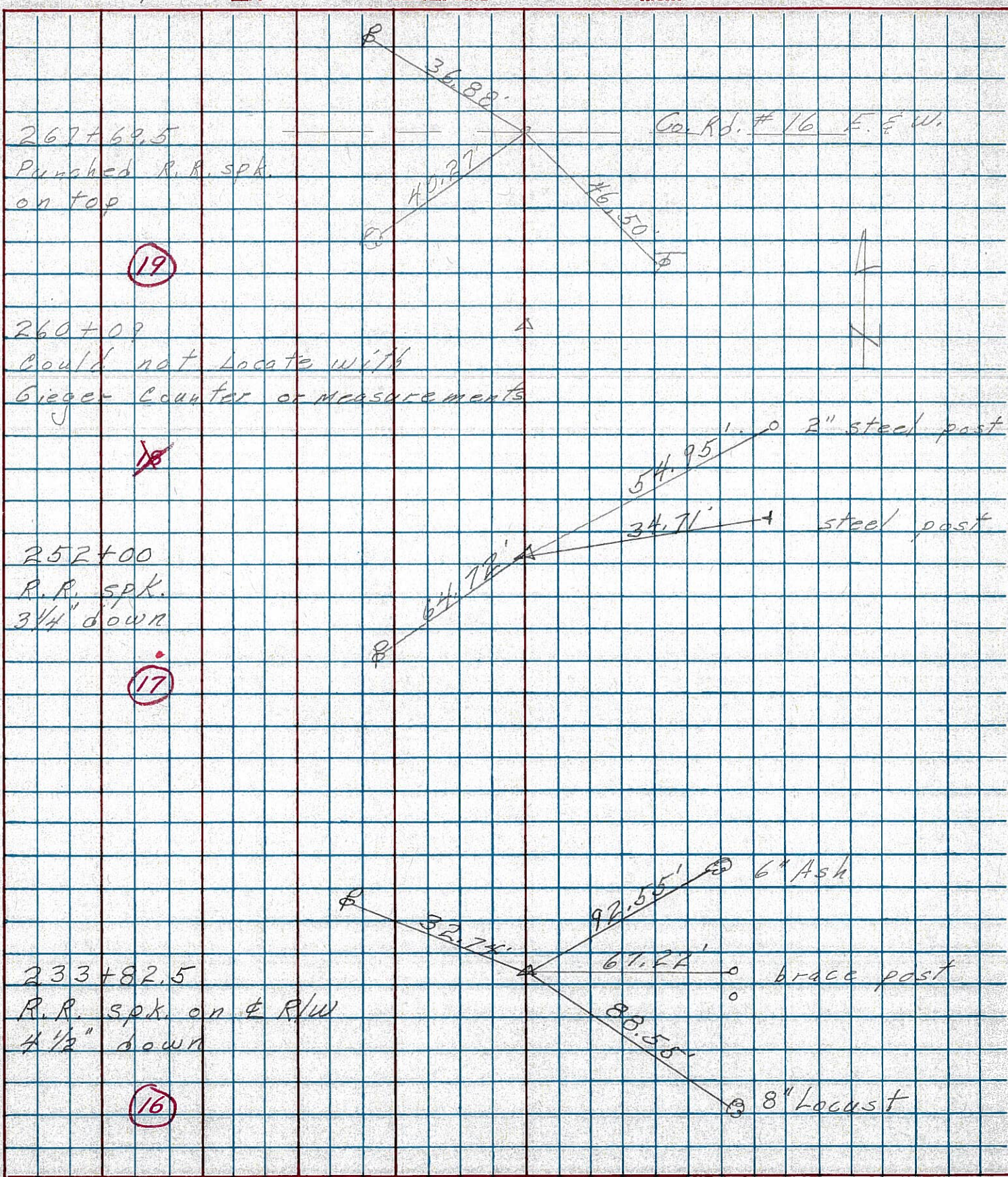
RECORD
252+00
RR SPIK
3 1/4" Down



Preventive Maintenance
Chip & Seal 2004
Existing Point Uncovered
Date 08/16/04 mc

PERSONNEL _____ TITLE _____ PERSONNEL _____ TITLE _____
 COUNTY Seneca DATE 3-13-75
 S. R. 231 WEATHER _____
 SEC. B TEMP. 35°

DESCRIPTION Wyandot Co. line to U.S. 224 JOB NO. _____
 LEFT _____ CENTER LINE _____ RIGHT _____



PERSONNEL TITLE PERSONNEL TITLE

Schneider _____ COUNTY Seneca DATE 10-30-69

Mosser _____ S. R. 231 WEATHER 60° Fair

Barbour _____ SEC. B TEMP. 60°

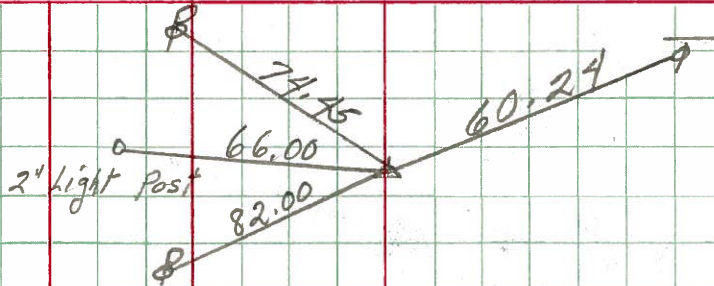
Potts _____ DESCRIPTION Wyandot Co. Line to Tiffin JOB NO. _____

LEFT CENTER LINE RIGHT

21

290+14.6
R.R. spk. on E R/W
set P.K. on top

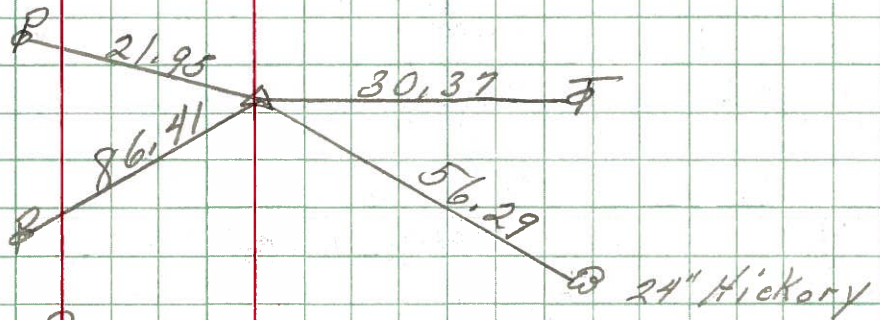
8681



20

279+42
Iron bolt on E R/W
2" down on Lt. edge

8680

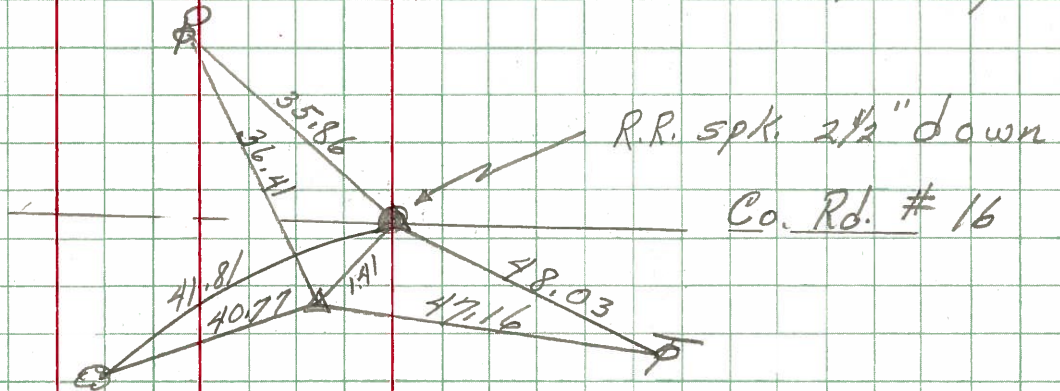


19

267+69.5
Iron Pin on E R/W
2 1/2" down
set 2 P.K. Nail

8679

260+09
did not find



17

252+00
Iron Pin on E R/W
4" down

8677

