

O.D.O.T. DISTRICT 2 SURVEY OFFICE (USE ONLY)

PERSONNEL

REFERENCE NO. 19

SHEET 24 OF 34

NOTES RHOADES

DATE 11/2/23

ROUTE SR 231

H.C. AUBLE

WEATHER SUNNY

COUNTY SENECA

R.C. MILLER

TEMP. 51°

TOWNSHIP EDEN

DWG BY RHOADES

PID 95780

SECTION 6

T 1 N R 15 E

TYPE MONUMENT MAG/WASHER

ON SURFACE - ~~BELOW~~ ON

OFFSET C PAVEMENT 1.0' ~~RT~~ : RT

9.8' TO RT EDGE PAVEMENT

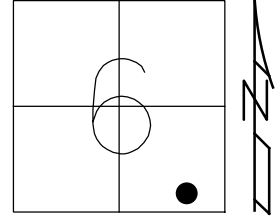
STATION: 268+52

HORIZ.DATUM: NAD83(2011)

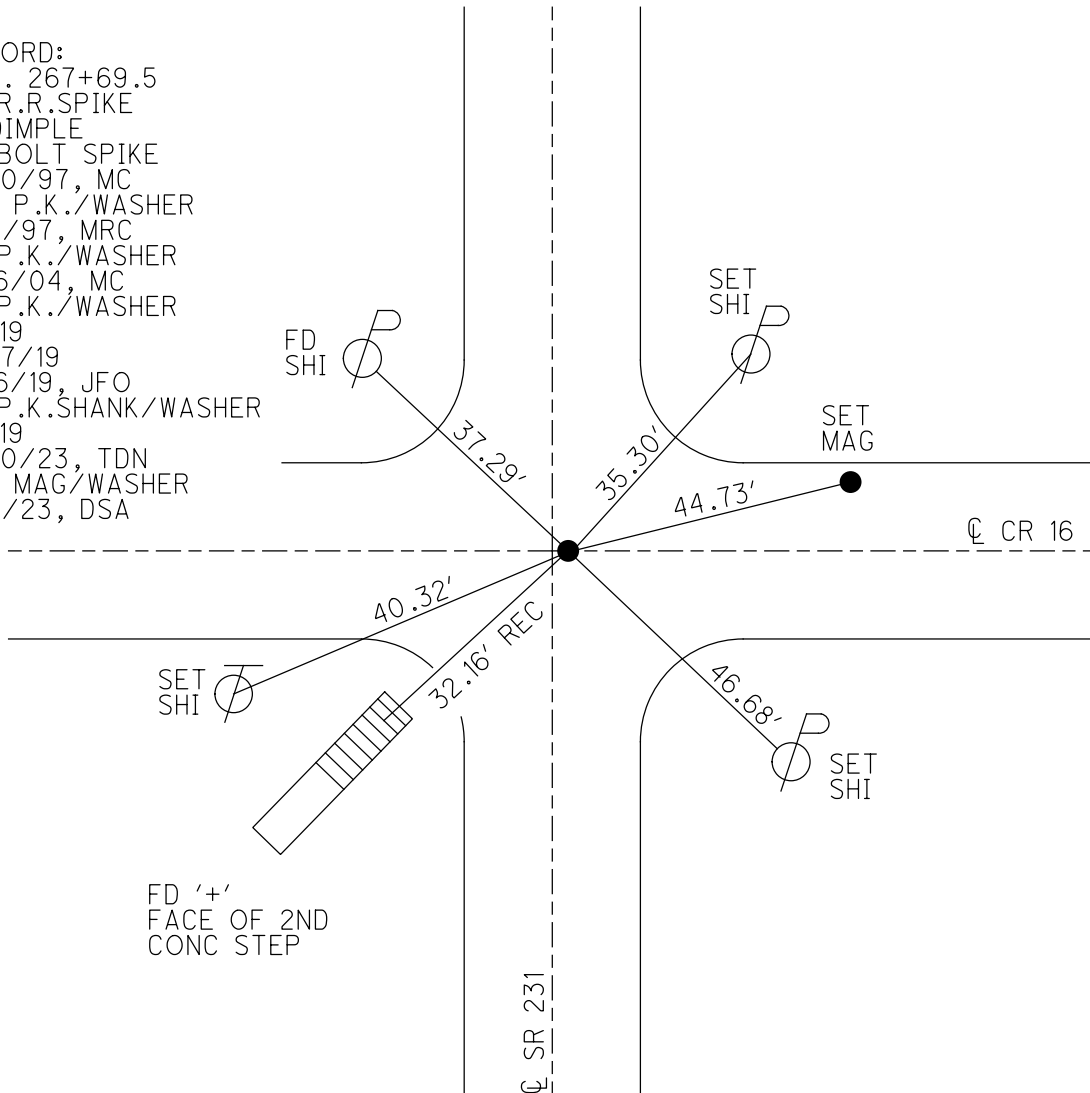
GEOID: NAVD88 2018

GRID: NORTHING: 510609.522

EASTING: 1782804.999



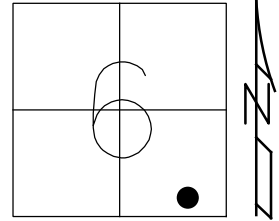
RECORD:
 STA. 267+69.5
 FD R.R.SPIKE
 W/DIMPLE
 FD BOLT SPIKE
 6/20/97, MC
 SET P.K./WASHER
 9/11/97, MRC
 FD P.K./WASHER
 8/16/04, MC
 FD P.K./WASHER
 REF19
 3/27/19
 8/16/19, JFO
 FD P.K.SHANK/WASHER
 REF19
 4/20/23, TDN
 SET MAG/WASHER
 11/2/23, DSA



O.D.O.T. DISTRICT 2 SURVEY OFFICE (USE ONLY)

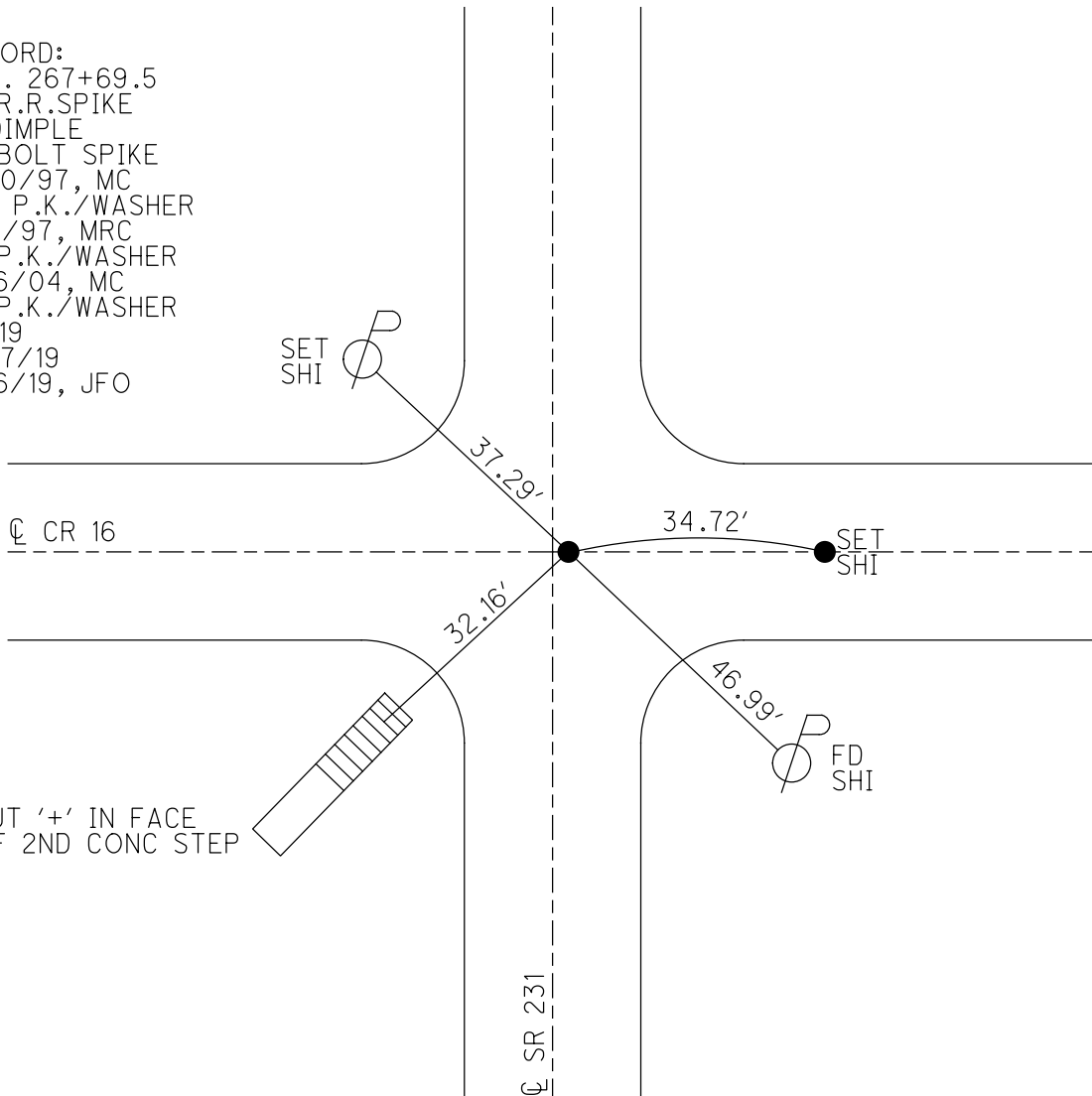
PERSONNEL _____ REFERENCE NO. 19 SHEET 23 OF 33
 NOTES CANTERBURY DATE 6/20/97 ROUTE SR 231
 H.C. CANTERBURY WEATHER SUNNY COUNTY SENECA
 R.C. ROUSOS TEMP. 85° TOWNSHIP EDEN
 _____ SECTION 6
 DWG BY NIESE PID 107060 T 1 N R 15 E

TYPE MONUMENT BOLT SPIKE
 ON SURFACE - ~~BELOW~~ _____ ON _____
 OFFSET \varnothing PAVEMENT 1.0' ~~LT~~ : RT
9.8' TO RT EDGE PAVEMENT
 STATION: 268+52



HORIZ.DATUM: NAD83(2011) GEOID: 2012A
 GRID: NORTHING: 510609.522 EASTING: 1782804.999

RECORD:
 STA. 267+69.5
 FD R.R.SPIKE
 W/DIMPLE
 FD BOLT SPIKE
 6/20/97, MC
 SET P.K./WASHER
 9/11/97, MRC
 FD P.K./WASHER
 8/16/04, MC
 FD P.K./WASHER
 REF19
 3/27/19
 8/16/19, JFO



O.D.O.T. DISTRICT 2 SURVEY OFFICE

PERSONNEL

REFERENCE NO. 19

SHEET 23 OF 27

NOTES Canterbury

H.C. Canterbury

R.C. Rouses

Drawn By Rouses

DATE 6/20/97

WEATHER Sunny

TEMP. + 85°

ROUTE SR 231

COUNTY SENECA

TOWNSHIP EDEN

SECTION 6

T1 N R 15 E

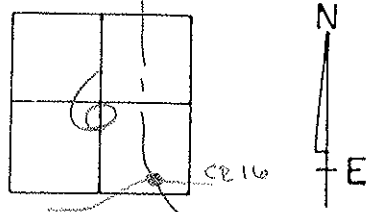
TYPE MONUMENT Bolt Spk

ON SURFACE - BELOW Surface

LEFT - C. PAV'T. - RIGHT 10 Ft.

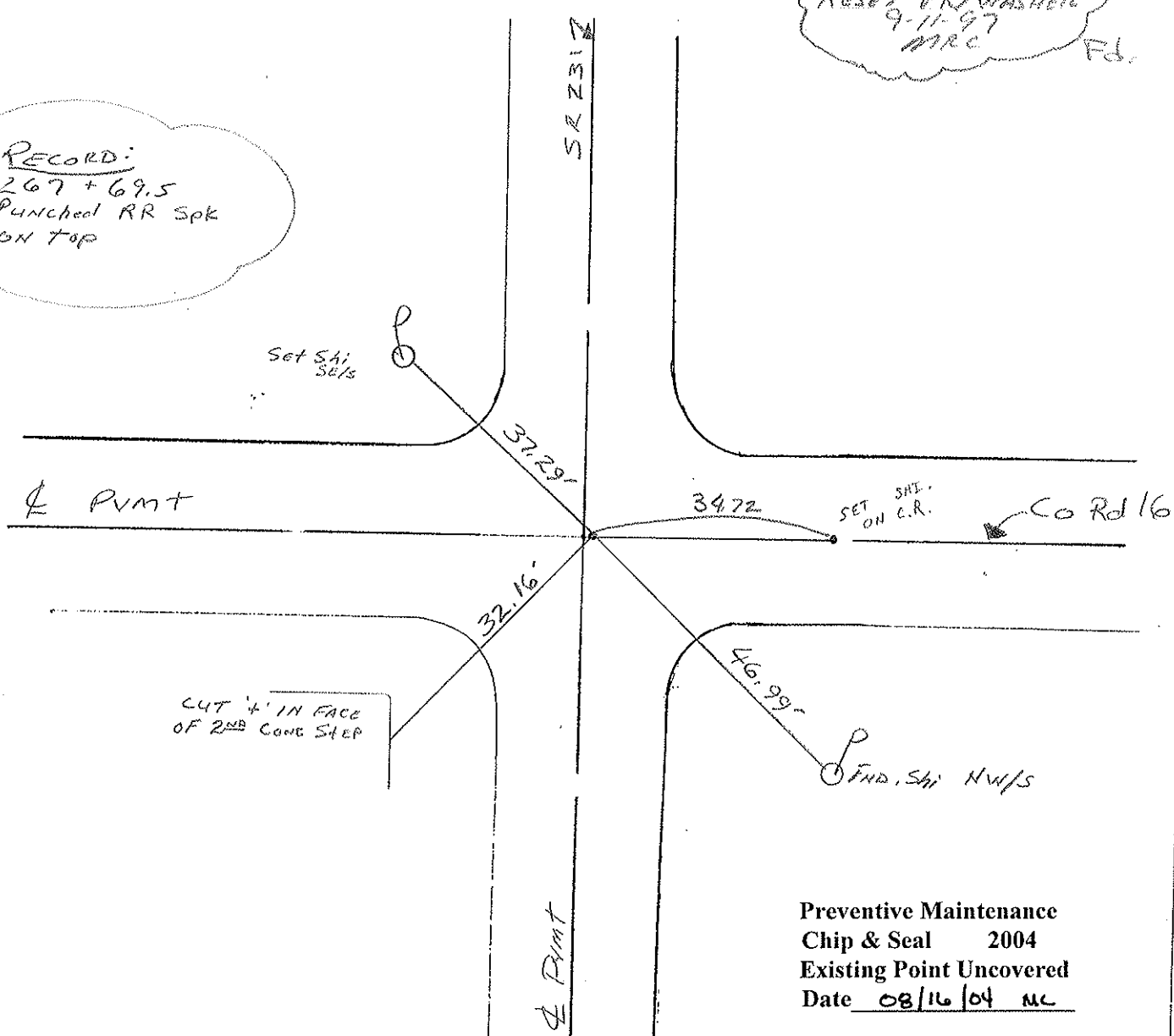
9.8 TO RT. EDGE PAVEMENT

S.L.M. 8+184.46 M 268+52



RECORD:
267 + 69.5
Punched RR Spk
ON TOP

RESET PK/WASHER
9-11-97
MRC
FD.



Preventive Maintenance
Chip & Seal 2004
Existing Point Uncovered
Date 08/16/04 MC

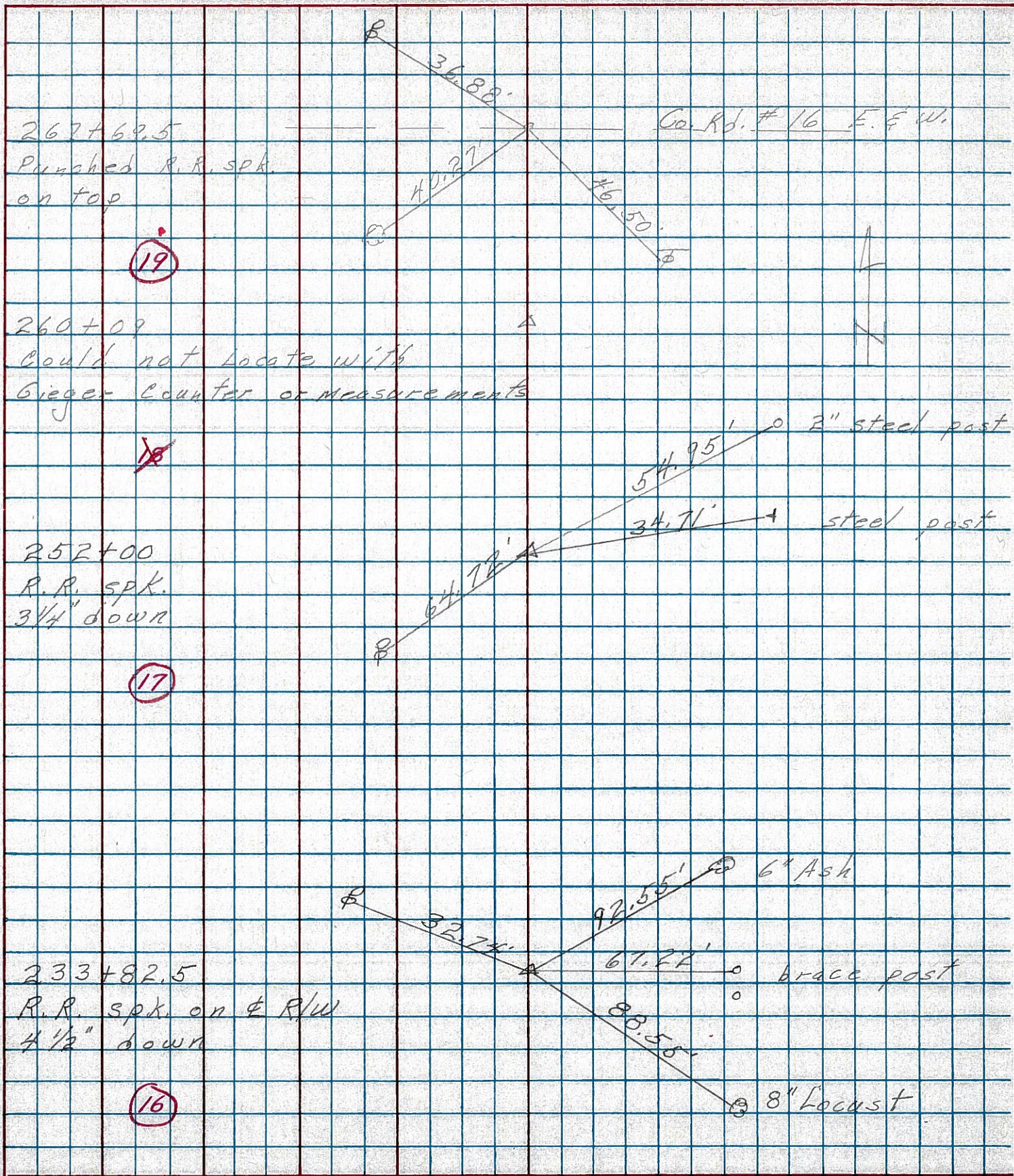
PERSONNEL TITLE PERSONNEL TITLE

COUNTY Seneca DATE 3-13-75

S. R. 231 WEATHER

SEC. B TEMP. 35°

DESCRIPTION Wyandot Co. line to U.S. 224 JOB NO.



PERSONNEL	TITLE	PERSONNEL	TITLE	COUNTY	DATE
Schneider				Seneca	10-30-69
Mosser				S. R. 231	WEATHER 60° Fair
Barbour				SEC. B	TEMP. 60°
Potts					

DESCRIPTION: Wyandot Co. Line to Tiffin

21

290+14.6
R.R. spk. on E R/W
set P.K. on top

8681

20

279+42
Iron bolt on E R/W
2" down on Lt. edge

8680

19

267+69.5
Iron Pin on E R/W
2 1/2" down
set 25 P.K. Nail

8679

260+09
did not find

8678

17

252+00
Iron Pin on E R/W
4" down

8677

