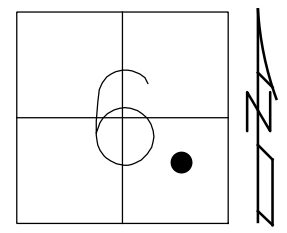
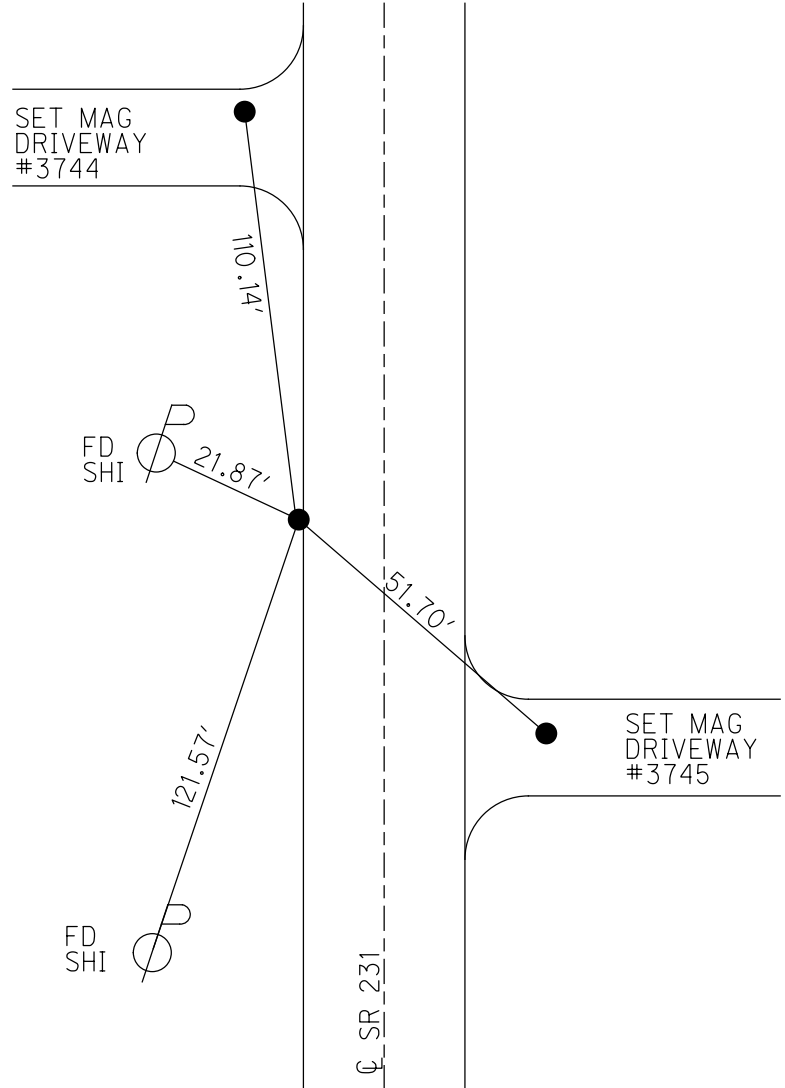


O.D.O.T. DISTRICT 2 SURVEY OFFICE (USE ONLY)

PERSONNEL	REFERENCE NO. <u>20</u>	SHEET <u>25</u> OF <u>34</u>
NOTES	RHOADES	DATE <u>11/2/23</u>
H.C.	AUBLE	WEATHER <u>SUNNY</u>
R.C.	MILLER	TEMP. <u>51°</u>
DWG BY <u>RHOADES</u>	PID <u>95780</u>	ROUTE <u>SR 231</u>
TYPE MONUMENT <u>MAG/WASHER</u>		COUNTY <u>SENECA</u>
ON SURFACE - BELOW <u>ON</u>		TOWNSHIP <u>EDEN</u>
OFFSET <u>☐</u> PAVEMENT <u>10'</u> LT : RT		SECTION <u>6</u>
<u>ON</u> TO LT EDGE PAVEMENT		T <u>1</u> N R <u>15</u> E
STATION: <u>280+24</u>		
HORIZ.DATUM: <u>NAD83(2011)</u>	GEOID: <u>NAVD88 2018</u>	
GRID: NORTHING: <u>511737.025</u>	EASTING: <u>1782483.480</u>	



RECORD:
 STA.279+42
 FD BOLT
 ON ☐ R/W
 1" DOWN
 FD SM.R.R.SPIKE
 3" DOWN
 6/20/97, MRC
 SET P.K./WASHER
 9/11/97, MRC
 FD P.K./WASHER
 8/16/04, MC
 FD P.K./WASHER
 REF20
 4/25/19
 8/16/19, JFO
 FD P.K./WASHER
 REF20
 4/20/23, TDN
 SET MAG/WASHER
 11/2/23, DSA



O.D.O.T. DISTRICT 2 SURVEY OFFICE (USE ONLY)

PERSONNEL _____ REFERENCE NO. 20 SHEET 24 OF 33
 NOTES CANTERBURY DATE 6/20/97 ROUTE SR 231
 H.C. CANTERBURY WEATHER SUNNY COUNTY SENECA
 R.C. ROUSOS TEMP. 85° TOWNSHIP EDEN
 DWG BY NIESE PID PT-SEN19 SECTION 6
 T 1 N R 15 E

TYPE MONUMENT SM. R.R. SPIKE

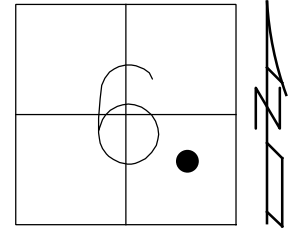
~~ON SURFACE~~ - BELOW 3"

OFFSET 0.4' LT PAVEMENT 10' LT : ~~RT~~
 TO LT EDGE PAVEMENT

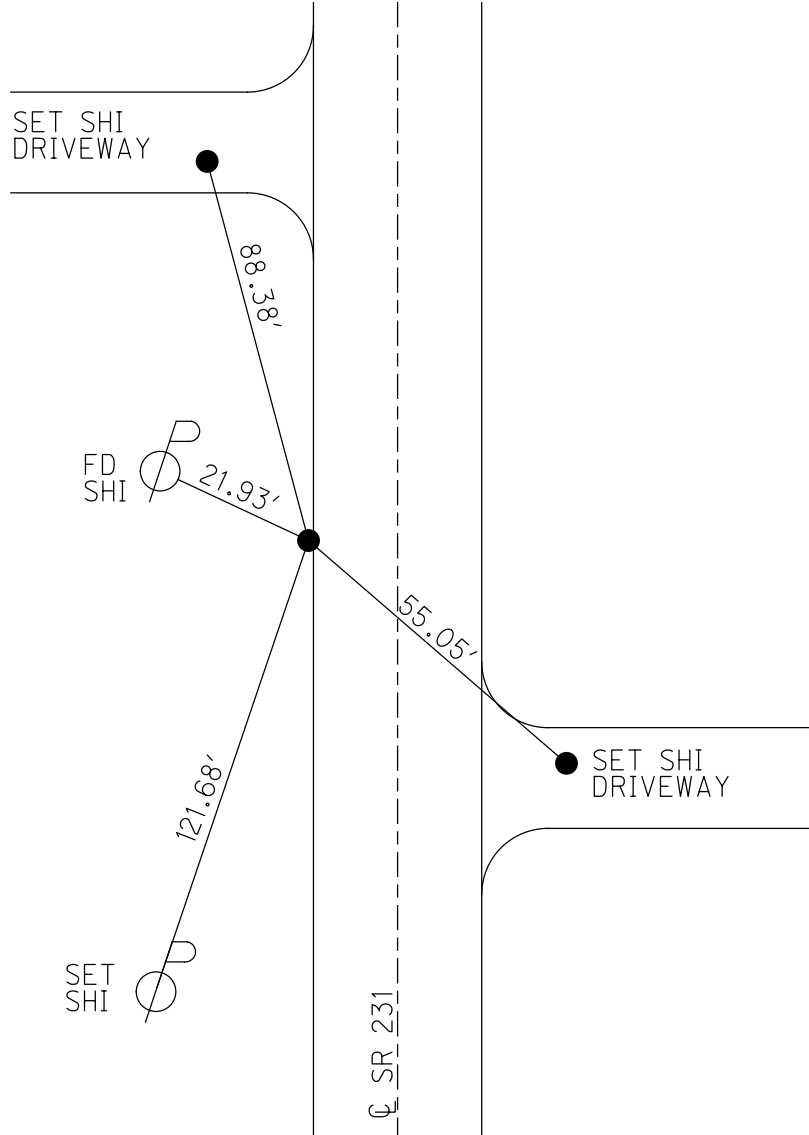
STATION: 280+24

HORIZ.DATUM: NAD83(2011) GEOID: 2012A

GRID: NORTHING: 511737.025 EASTING: 1782483.480



RECORD:
 STA. 279+42
 FD BOLT
 ON CL R/W
 1" DOWN
 FD SM.R.R.SPIKE
 3" DOWN
 6/20/97, MRC
 SET P.K./WASHER
 9/11/97, MRC
 FD P.K./WASHER
 8/16/04, MC
 FD P.K./WASHER
 REF20
 4/25/19
 8/16/19, JFO



O.D.O.T. DISTRICT 2 SURVEY OFFICE

PERSONNEL _____

REFERENCE NO. 20

SHEET 24 OF 27

NOTES CANTERBURY

H.C. CANTERBURY

R.C. Rousar

Drawn By Rousar

DATE 6/20/97

WEATHER Sunny

TEMP. +85°

ROUTE SR 231

COUNTY SENECA

TOWNSHIP EDEN

SECTION 6

T.1 N. R. 15 E

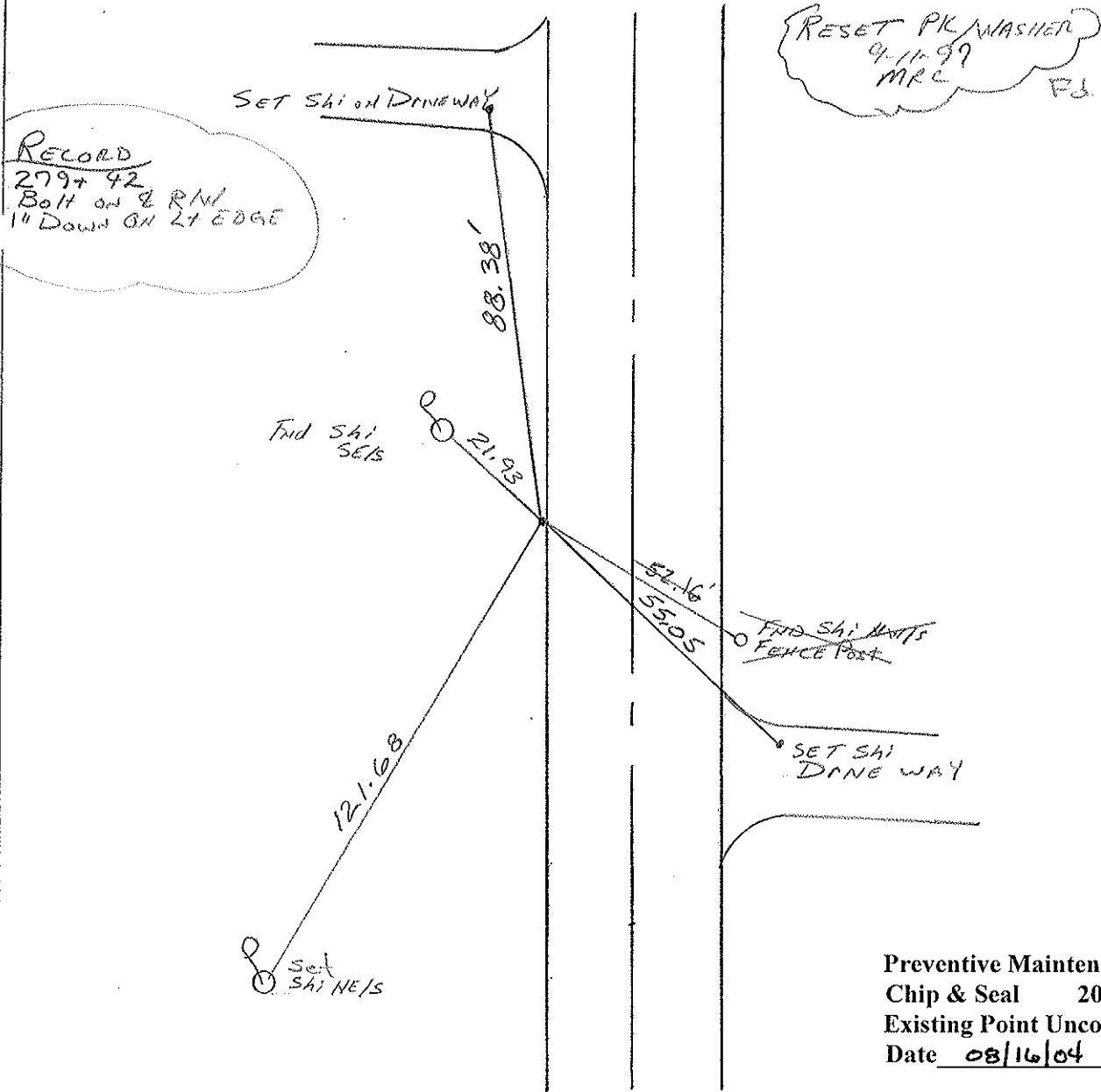
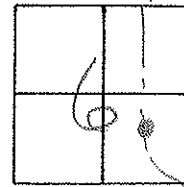
TYPE MONUMENT S.M. RR Spk

ON SURFACE - BELOW 3"

LEFT - 6 PAV'T. - RIGHT 10' LT

0.4 TO LT EDGE PAVEMENT

S.L.M. 8+541.89 M 280+24



Preventive Maintenance
 Chip & Seal 2004
 Existing Point Uncovered
 Date 08/16/04 MC

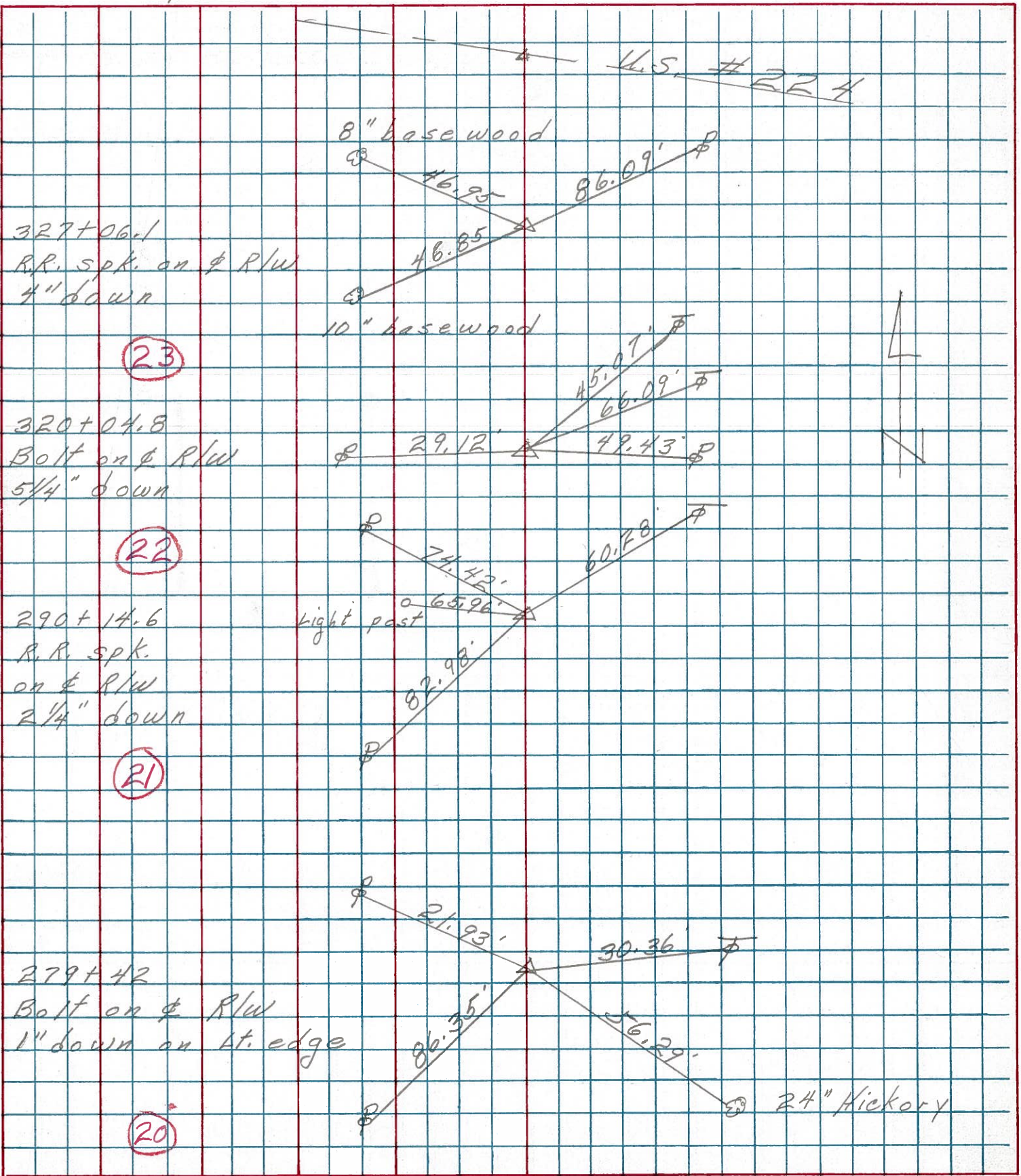
PERSONNEL TITLE PERSONNEL TITLE

COUNTY Seneca DATE 3-13-75

S. R. 231 WEATHER

SEC. B TEMP. 35°

DESCRIPTION Wyandot Co. Line to U.S. RR 4 JOB NO.



PERSONNEL	TITLE	PERSONNEL	TITLE	COUNTY	DATE
Schneider				Seneca	10-30-69
Mosser				S. R. 231	WEATHER 60° Fair
Barbour				SEC. B	TEMP. 60°
Potts					

DESCRIPTION Wyandot Co. Line to Tiffin JOB NO. _____

21

290+14.6
 R.R. spk. on E R/W
 set P.K. on top

8681

20

279+42
 Iron bolt on E R/W
 2" down on Lt. edge

8680

19

267+69.5
 Iron Pin on E R/W
 2 1/2" down
 set 25 P.K. Nail

8679

260+09
 did not find

8678

17

252+00
 Iron Pin on E R/W
 4" down

8677

