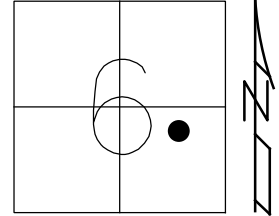


O.D.O.T. DISTRICT 2 SURVEY OFFICE (USE ONLY)

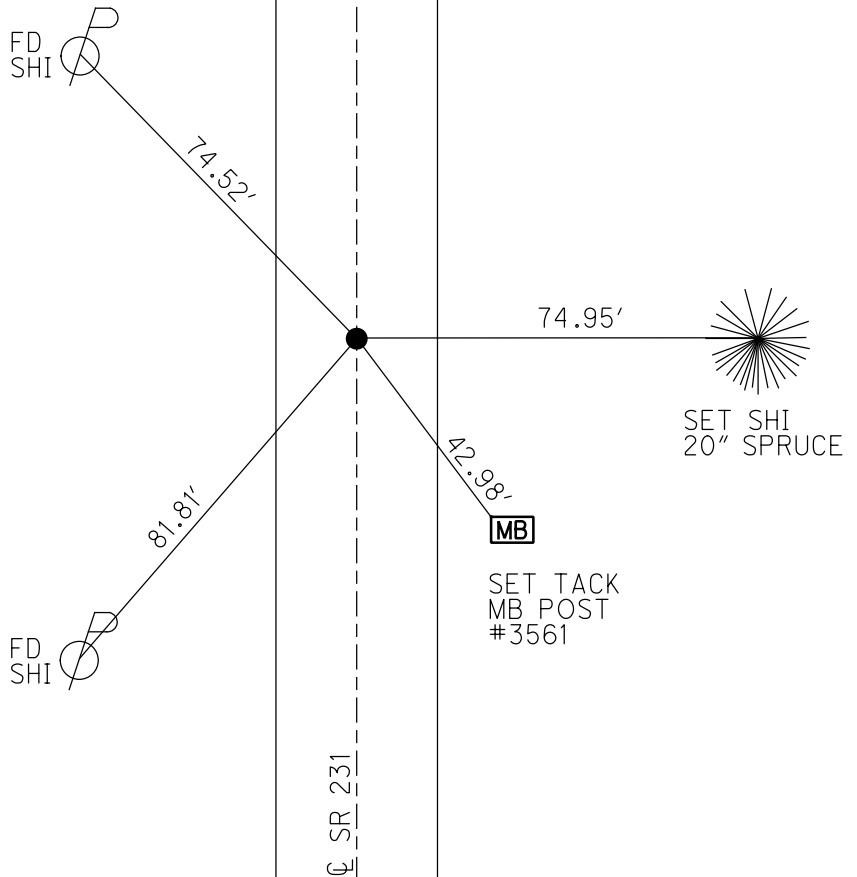
PERSONNEL _____ REFERENCE NO. 21 SHEET 26 OF 34
 NOTES RHOADES DATE 11/2/23 ROUTE SR 231
 H.C. AUBLE WEATHER SUNNY COUNTY SENECA
 R.C. MILLER TEMP. 51° TOWNSHIP EDEN
 DWG BY RHOADES PID 95780 SECTION 6
 T 1 N R 15 E

TYPE MONUMENT MAG/WASHER
 ON SURFACE - ~~BELOW~~ ON _____
 OFFSET C PAVEMENT 0.4' LT : ~~RT~~
9.7' TO LT EDGE PAVEMENT
 STATION: 290+96



HORZ.DATUM: NAD83(2011) GEOID: NAVD88 2018
 GRID: NORTHING: 512807.525 EASTING: 1782465.922

RECORD:
 STA.290+14.6
 FD R.R.SPIKE
 ON C R/W
 2 1/4" DOWN
 FD R.R.SPIKE
 5" DOWN
 6/20/97, MRC
 SET P.K./WASHER
 9/11/97, MRC
 FD P.K./WASHER
 8/16/04, MC
 FD P.K./WASHER
 REF21
 4/25/19
 8/16/19, JFO
 FD P.K./WASHER
 REF21
 4/20/23, TDN
 SET MAG/WASHER
 11/2/23, DSA



O.D.O.T. DISTRICT 2 SURVEY OFFICE (USE ONLY)

PERSONNEL

REFERENCE NO. 21

SHEET 25 OF 33

NOTES CANTERBURY

DATE 6/20/97

ROUTE SR 231

H.C. CANTERBURY

WEATHER SUNNY

COUNTY SENECA

R.C. ROUSOS

TEMP. 85°

TOWNSHIP EDEN

DWG BY NIESE

PID PT-SEN19

SECTION 6

T 1 N R 15 E

TYPE MONUMENT R.R. SPIKE

~~ON SURFACE~~ - BELOW 5"

OFFSET 0.4' \odot PAVEMENT LT : ~~RT~~

9.7' TO LT EDGE PAVEMENT

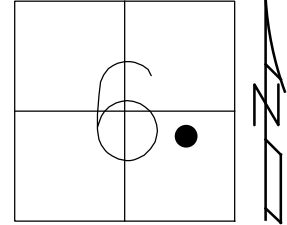
STATION: 290+96

HORZ.DATUM: NAD83(2011)

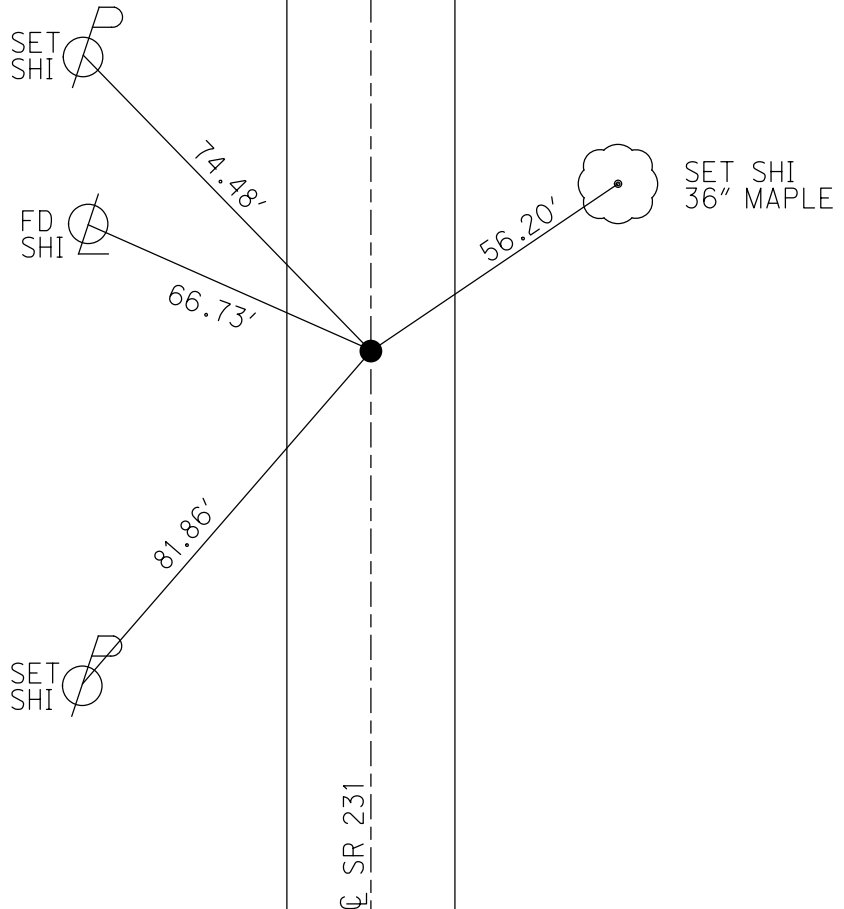
GEOID: 2012A

GRID: NORTHING: 512807.525

EASTING: 1782465.922



RECORD:
 STA.290+14.6
 FD R.R.SPIKE
 ON \odot R/W
 2 1/4" DOWN
 FD R.R.SPIKE
 5" DOWN
 6/20/97, MRC
 SET P.K./WASHER
 9/11/97, MRC
 FD P.K./WASHER
 8/16/04, MC
 FD P.K./WASHER
 REF21
 4/25/19
 8/16/19, JFO



O.D.O.T. DISTRICT 2 SURVEY OFFICE

PERSONNEL

REFERENCE NO. 21

SHEET 25 OF 27

NOTES CANTERBURY

H.C. CANTERBURY

R.C. Rousos

Drawn By Rousos

DATE 6/20/97

WEATHER SUNNY

TEMP. +85°

ROUTE SR 231

COUNTY SENECA

TOWNSHIP EDEN

SECTION 6

TL N R 15 E

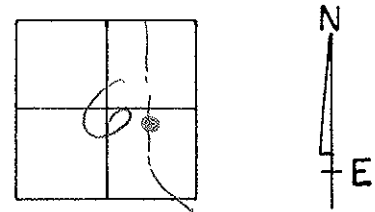
TYPE MONUMENT RR SPK

ON SURFACE - BELOW 5"

LEFT - CL PAW'T. - RIGHT 0.4 LT

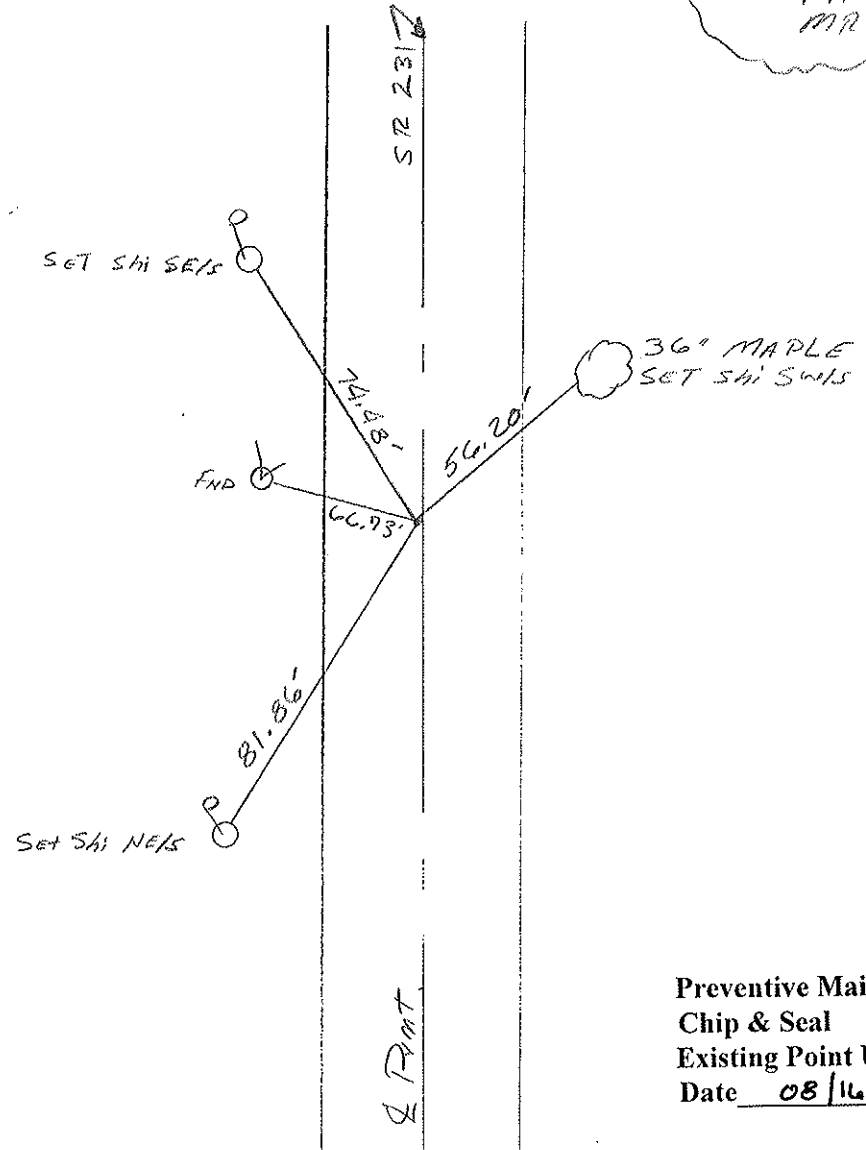
9.7 TO LT EDGE PAVEMENT

S.L.M. 8 + 868.59 m 290+96



RESET PK/WASHER
 9-11-97
 MRL
 F.S.

RECORD:
 290+14.6
 RR SPK
 ON CL RW
 2 1/4" DOWN



Preventive Maintenance
 Chip & Seal 2004
 Existing Point Uncovered
 Date 08/16/04 MRL

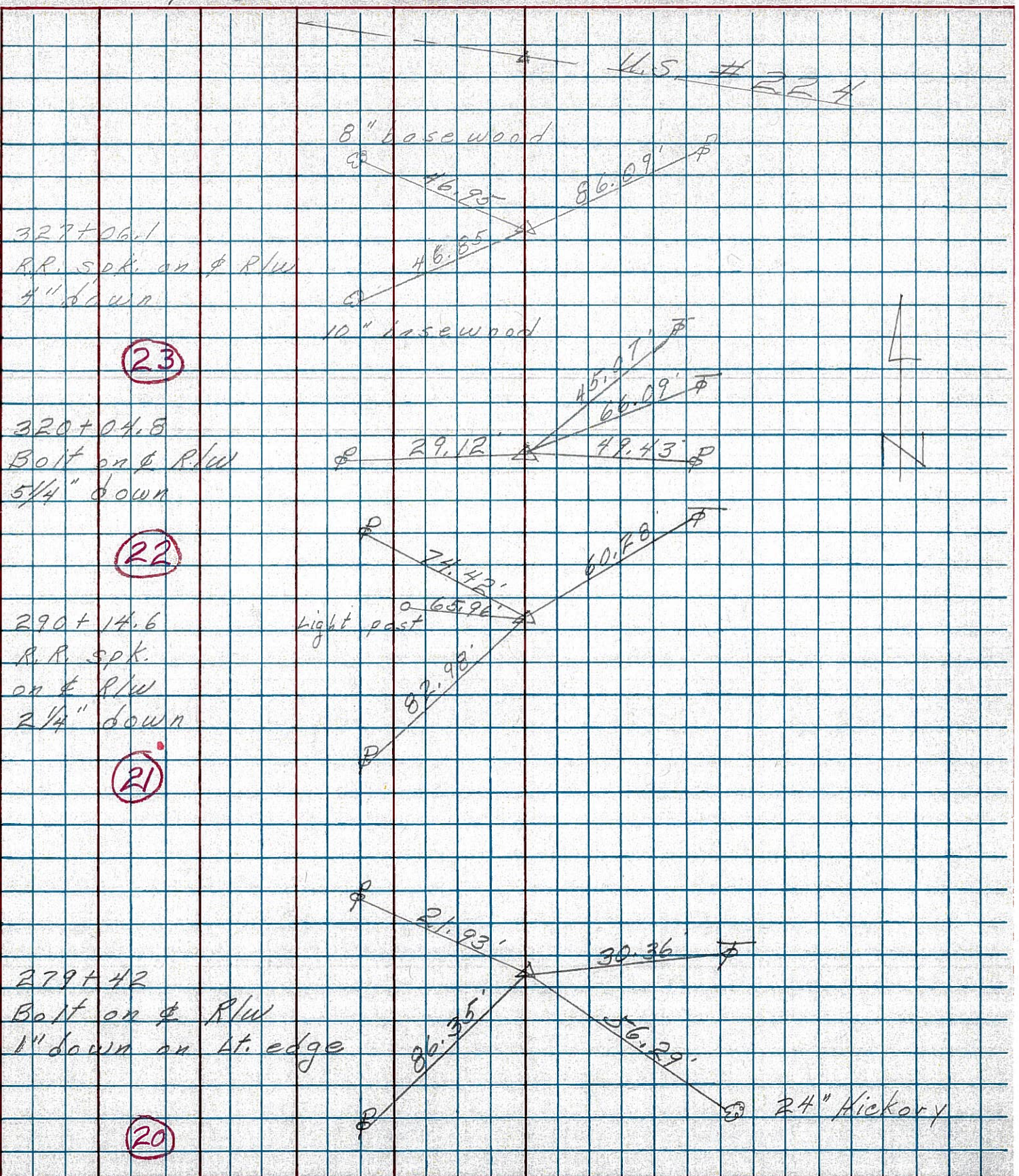
PERSONNEL TITLE PERSONNEL TITLE

COUNTY Seneca DATE 3-13-75

S. R. 231 WEATHER

SEC. B TEMP. 35°

DESCRIPTION Wyandot Co. Line to U.S. 224 JOB NO.



PERSONNEL	TITLE	PERSONNEL	TITLE	COUNTY	DATE
Schneider				Seneca	10-30-69
Mosser				S. R.	231
Barbour				SEC.	B
Potts				TEMP.	60°
DESCRIPTION	Wyandot Co. Line to Tiffin			JOB NO.	
	LEFT	CENTER LINE	RIGHT		

21

290+14.6
R.R. spk. on E R/W
set R.K. on top

8681

20

279+42
Iron bolt on E R/W
2" down on Lt. edge

8680

19

267+69.5
Iron Pin on E R/W
2 1/2" down
set 25 R.K. Nail

8679

260+09
did not find

8678

17

252+00
Iron Pin on E R/W
4" down

8677

