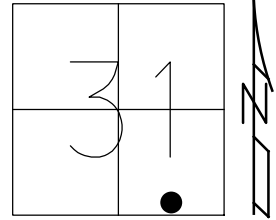


O.D.O.T. DISTRICT 2 SURVEY OFFICE (USE ONLY)

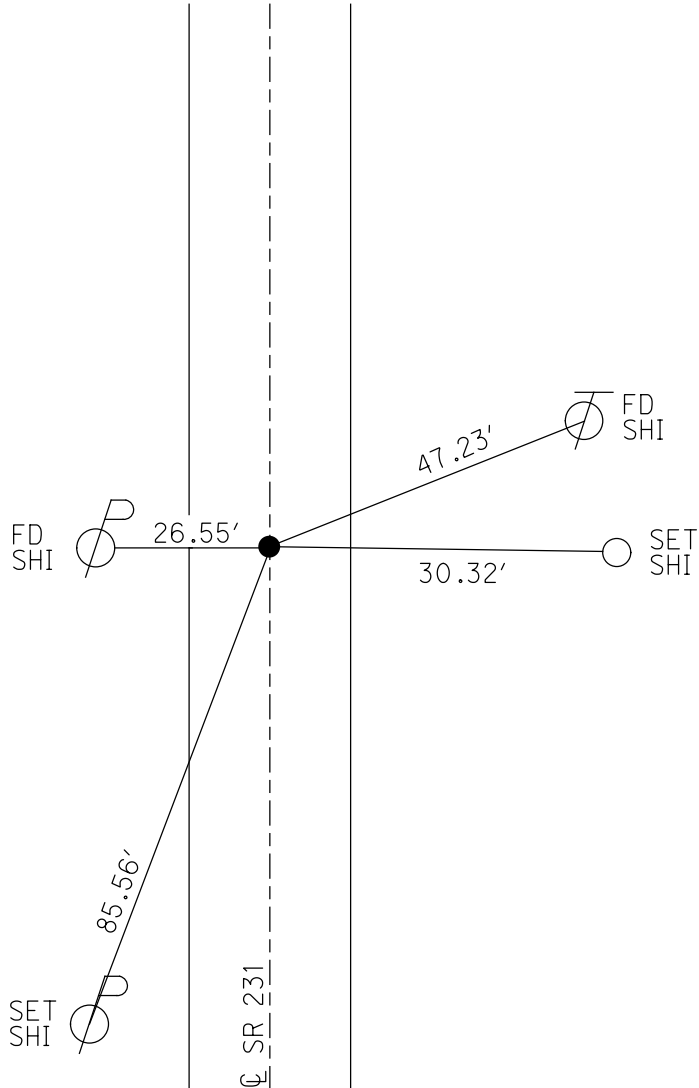
PERSONNEL _____ REFERENCE NO. 22 SHEET 27 OF 34
 NOTES RHOADES DATE 11/2/23 ROUTE SR 231
 H.C. AUBLE WEATHER SUNNY COUNTY SENECA
 R.C. MILLER TEMP. 52° TOWNSHIP CLINTON
 DWG BY RHOADES PID 95780 SECTION 31
 T 2 N R 15 E

TYPE MONUMENT MAG/WASHER
 ON SURFACE - ~~BELOW~~ ON
 OFFSET \varnothing PAVEMENT ON LT : RT
8.9' TO RT EDGE PAVEMENT
 STATION: 320+98



HORZ.DATUM: NAD83(2011) GEOID: NAVD88 2018
 GRID: NORTHING: 515796.688 EASTING: 1782493.314

RECORD:
 STA.320+04.8
 FD BOLT
 ON \varnothing R/W
 5 1/4" DOWN
 FD LG.R.R.SPIKE
 8" DOWN
 6/24/97, MRC
 SET P.K./WASHER
 9/11/97, MRC
 FD P.K./WASHER
 8/16/04, MC
 FD P.K.SHANK/WASHER
 1" DOWN
 REF22
 4/25/19
 8/16/19, JFO
 FD P.K.SHANKS
 AGAINST EACH OTHER
 1" DOWN
 PULLED TO MIDDLE
 REF22
 4/20/23, TDN
 SET MAG/WASHER
 11/2/23, DSA



O.D.O.T. DISTRICT 2 SURVEY OFFICE (USE ONLY)

PERSONNEL

REFERENCE NO. 22

SHEET 26 OF 33

NOTES CANTERBURY

DATE 6/24/97

ROUTE SR 231

H.C. CANTERBURY

WEATHER SUNNY

COUNTY SENECA

R.C. ROUSOS

TEMP. 89°

TOWNSHIP CLINTON

SECTION 31

DWG BY NIESE PID PT-SEN19

T 2 N R 15 E

TYPE MONUMENT LG. R.R. SPIKE

~~ON SURFACE~~ - BELOW 8"

OFFSET ☉ PAVEMENT ON _____ LT : RT

8.9' TO RT EDGE PAVEMENT

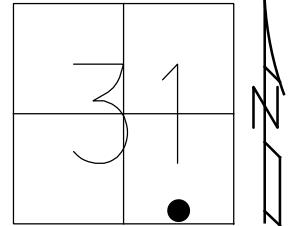
STATION: 320+98

HORIZ.DATUM: NAD83(2011)

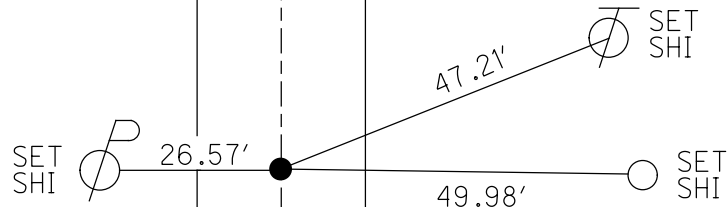
GEOID: 2012A

GRID: NORTHING: 515796.688

EASTING: 1782493.314



RECORD:
 STA.320+04.8
 FD BOLT
 ON ☉ R/W
 5 1/4" DOWN
 FD LG.R.R.SPIKE
 8" DOWN
 6/24/97, MRC
 SET P.K./WASHER
 9/11/97, MRC
 FD P.K./WASHER
 8/16/04, MC
 FD P.K.SHANK/WASHER
 1" DOWN
 REF22
 4/25/19
 8/16/19, JFO



☉ SR 231

O.D.O.T. DISTRICT 2 SURVEY OFFICE

PERSONNEL

REFERENCE NO. 22

SHEET 26 OF 27

NOTES Cantonbury

H.C. Cantonbury

R.C. Rousar

Drawn By Rousar

DATE 6/24/97

WEATHER SUNNY

TEMP. +89°

ROUTE SR 231

COUNTY SENECA

TOWNSHIP CLINTON

SECTION 31

T. 2 N. R. 15 E

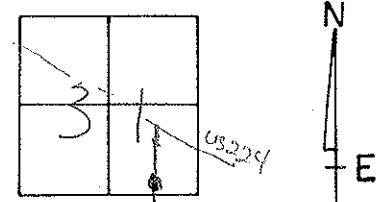
TYPE MONUMENT Lg. PR Spk

ON SURFACE - BELOW 8"

LEFT- & PAV'T. - RIGHT ON &

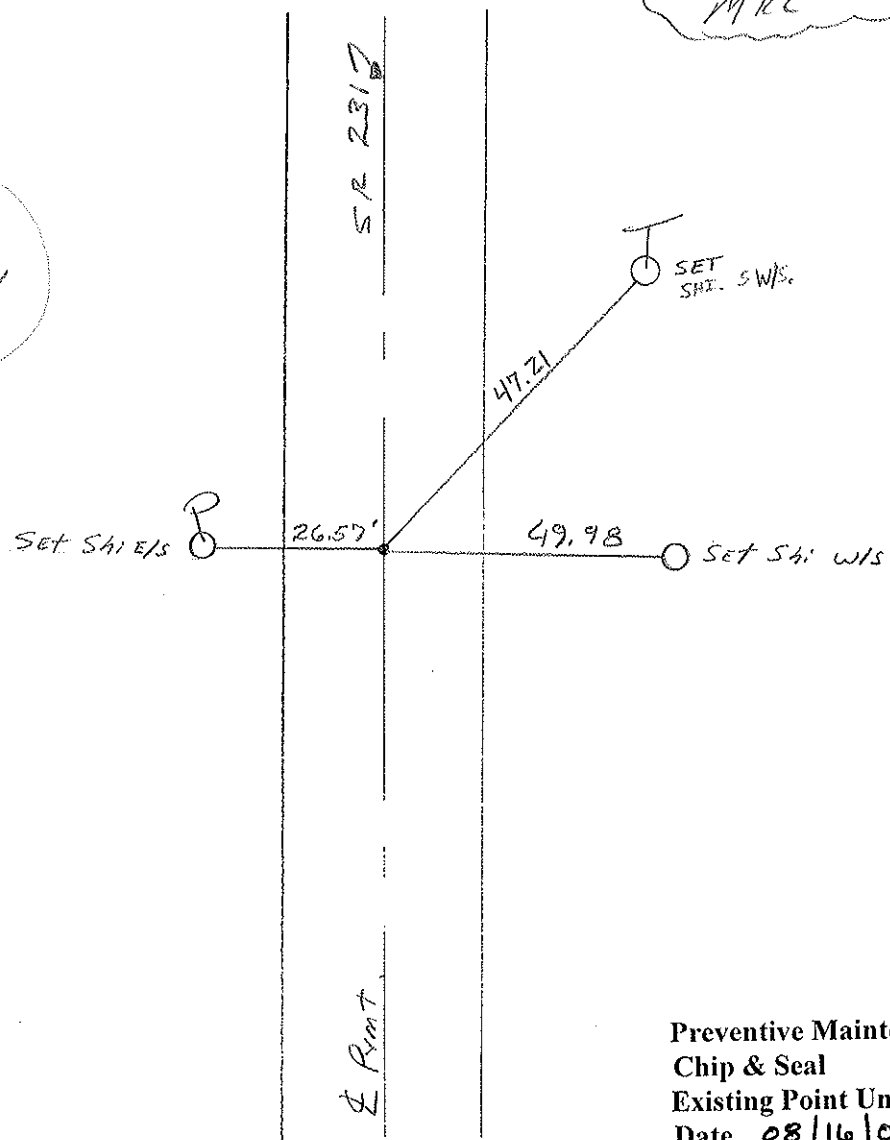
8.9 TO RT EDGE PAVEMENT

S.L.M. 9+783.54m 320+98



(RESET PK WASHFR)
 9-11-97
 MRC
 FS.

RECORD!
 320+04.3
 Bolt on & R/W
 5 1/4" Down



Preventive Maintenance
 Chip & Seal 2004
 Existing Point Uncovered
 Date 08/16/04 mc

OLD # 8032

PERSONNEL TITLE PERSONNEL TITLE

Schneider
Mossler
Barbour
Potts

COUNTY Seneca

DATE 10-30-69

S. R. 231

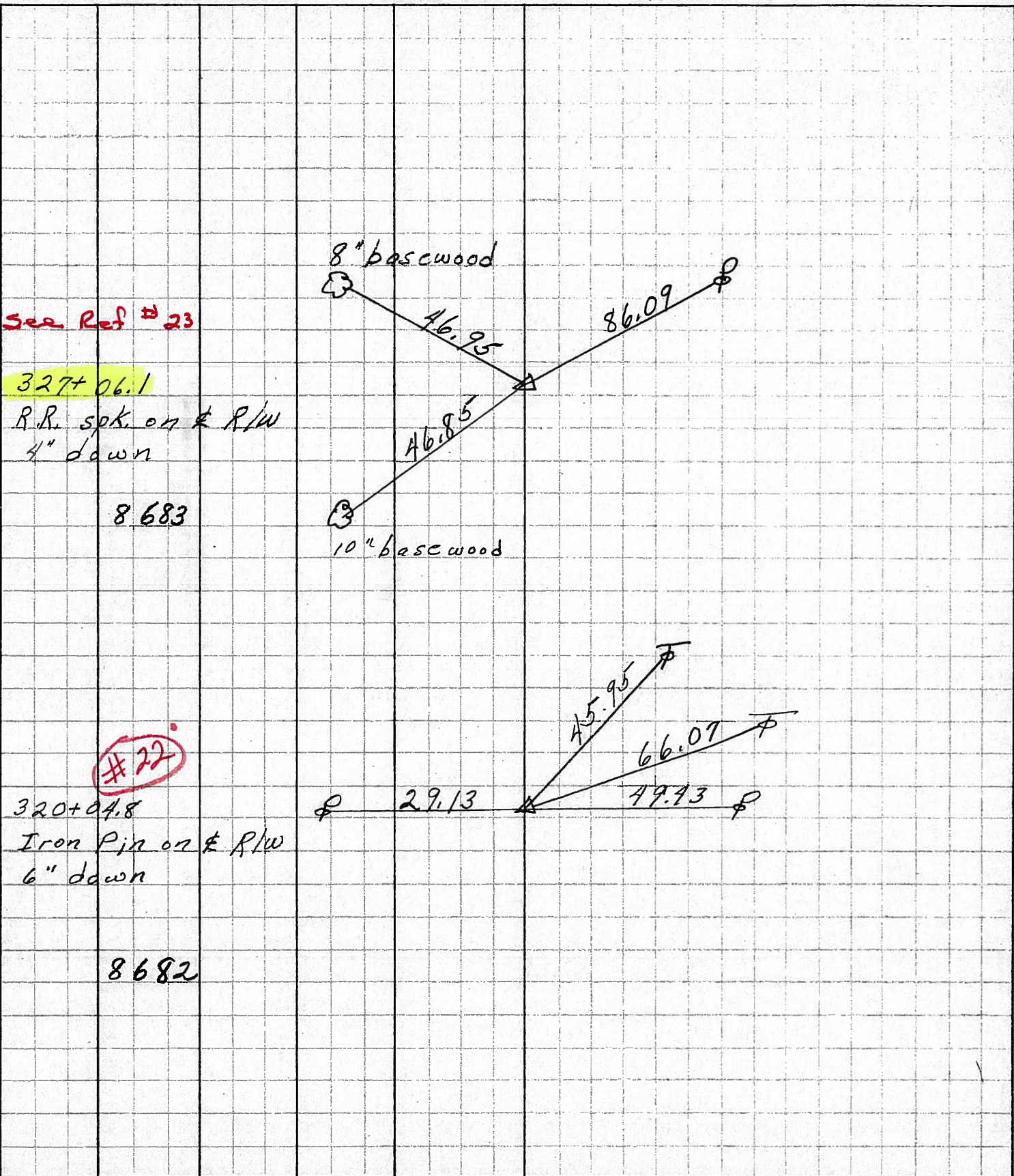
WEATHER Fair

SEC. B

TEMP. 55°

DESCRIPTION Wyandot Co. Line to U.S. 224 By-Pass JOB NO.

LEFT CENTER LINE RIGHT



See Ref # 23

23

327+06.1

R.R. spk. on R/W
4" down

8683

8" basewood

10" basewood

#22

320+04.8

Iron Pin on R/W
6" down

8682

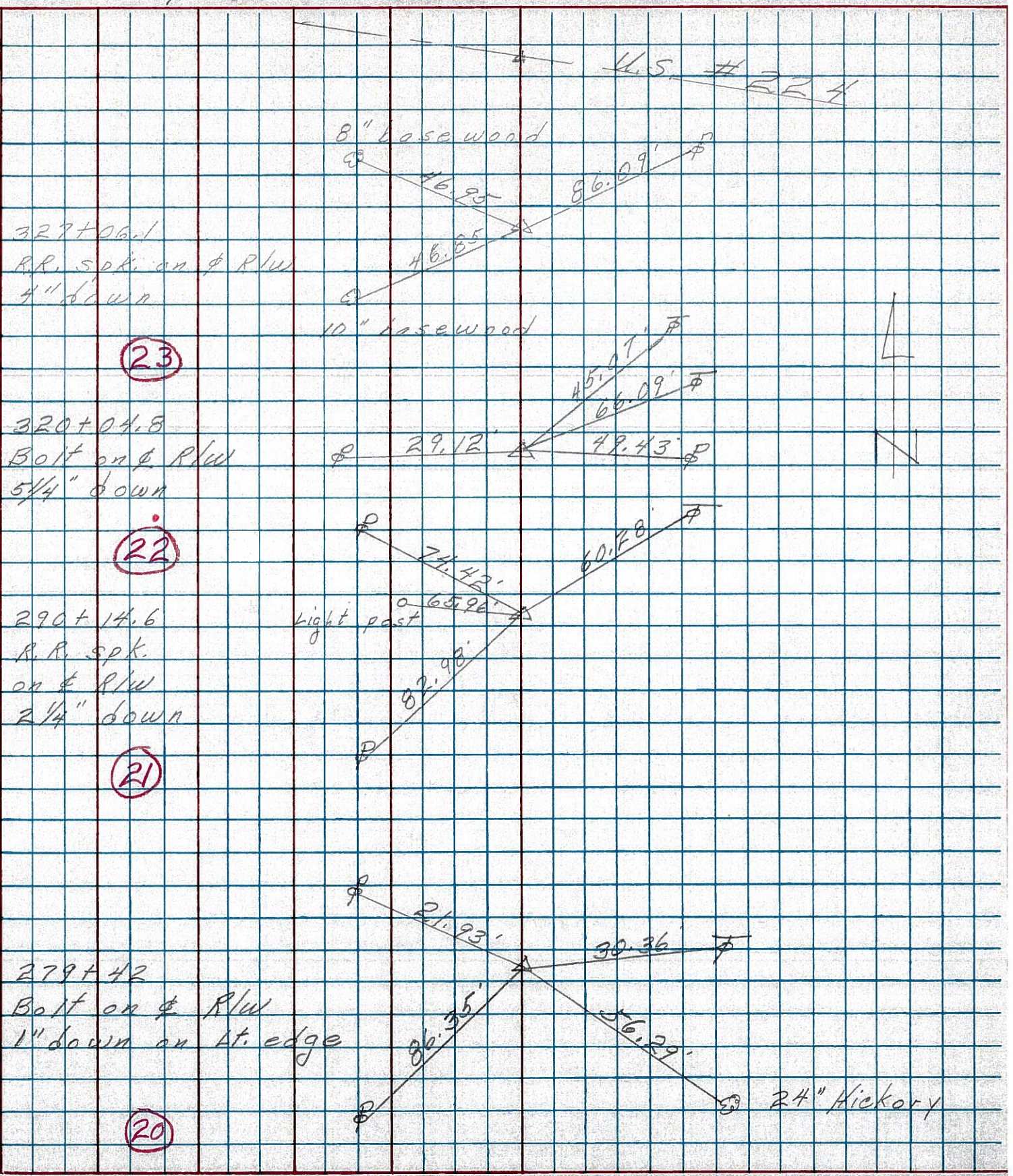
PERSONNEL TITLE PERSONNEL TITLE

COUNTY Seneca DATE 3-13-75

S. R. 231 WEATHER

SEC. B TEMP. 35°

DESCRIPTION Wyandot Co. Line to U.S. 224 JOB NO.



PERSONNEL	TITLE	PERSONNEL	TITLE	COUNTY	Seneca	DATE	10-30-69
Schneider				S. R.	231	WEATHER	Fair
Mosser				SEC.	B	TEMP.	55°
Barbour				DESCRIPTION <u>Wyandot Co. Line to U.S. 224 By-Pass</u>			
Potts				LEFT	CENTER LINE	RIGHT	JOB NO.

