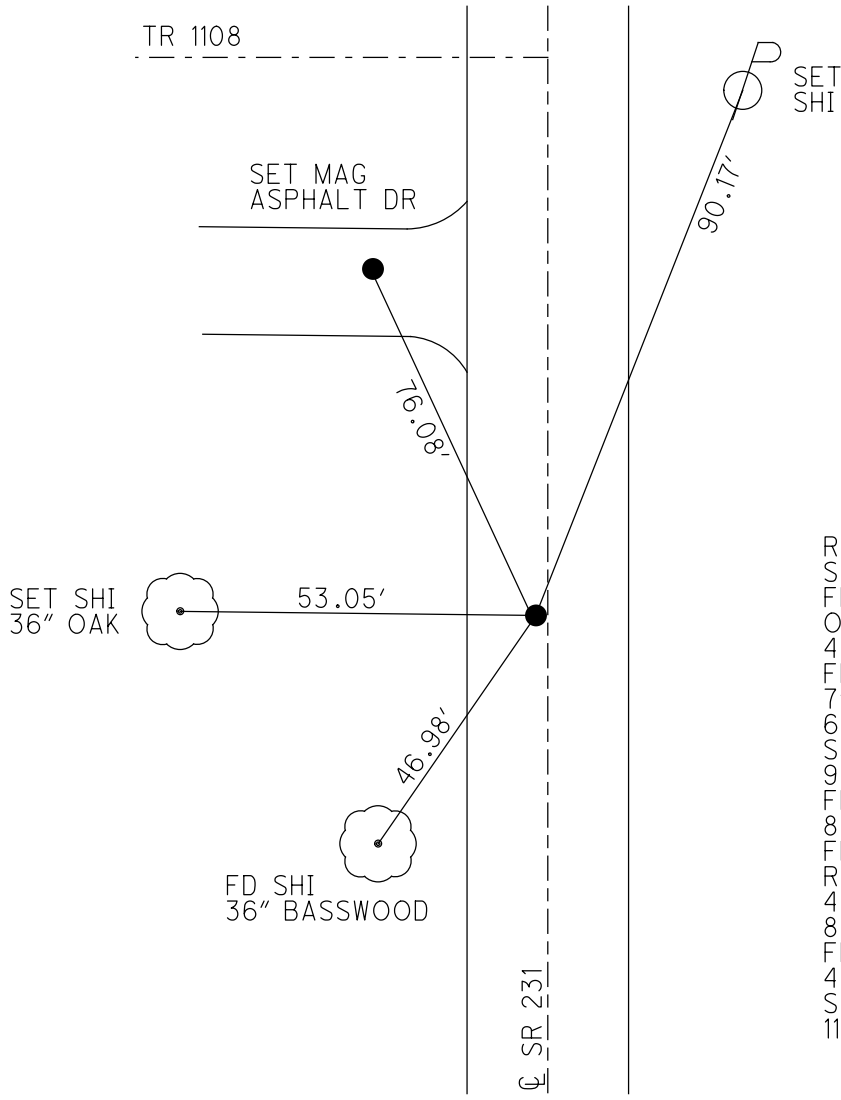
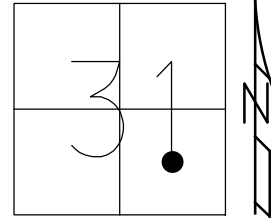


O.D.O.T. DISTRICT 2 SURVEY OFFICE (USE ONLY)

PERSONNEL \_\_\_\_\_ REFERENCE NO. 23 SHEET 28 OF 34  
 NOTES RHOADES DATE 11/2/23 ROUTE SR 231  
 H.C. AUBLE WEATHER SUNNY COUNTY SENECA  
 R.C. MILLER TEMP. 52° TOWNSHIP CLINTON  
 DWG BY RHOADES PID 95780 SECTION 31  
 T 2 N R 15 E

TYPE MONUMENT MAG/WASHER  
 ON SURFACE - ~~BELOW~~ ON \_\_\_\_\_  
 OFFSET  $\odot$  PAVEMENT 1.0' LT : ~~RT~~  
8.9' TO LT EDGE PAVEMENT  
 STATION: 328+00

HORZ.DATUM: NAD83(2011) GEOID: NAVD88 2018  
 GRID: NORTHING: 516497.503 EASTING: 1782478.156

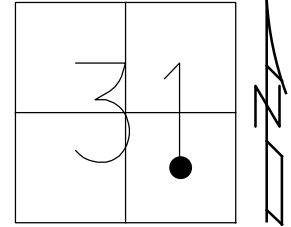


RECORD:  
 STA. 327+06.1  
 FD R.R.SPIKE  
 ON  $\odot$  R/W  
 4" DOWN  
 FD LG.R.R.SPIKE  
 7" DOWN  
 6/27/97, MRC  
 SET P.K./WASHER  
 9/11/97, MRC  
 FD P.K./WASHER  
 8/17/04, MC  
 FD P.K./WASHER  
 REF23  
 4/25/19  
 8/16/19, JFO  
 FD P.K./WASHER  
 4/20/23, TDN  
 SET MAG/WASHER  
 11/2/23, DSA

O.D.O.T. DISTRICT 2 SURVEY OFFICE (USE ONLY)

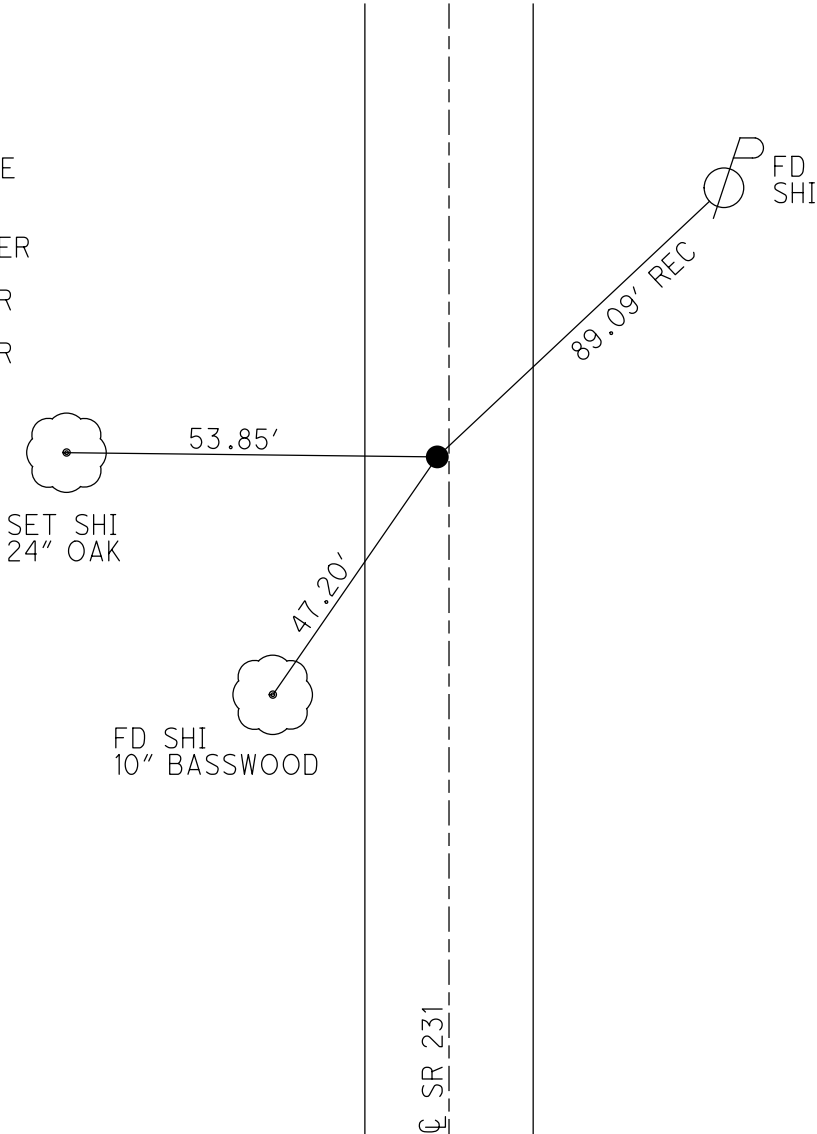
PERSONNEL \_\_\_\_\_ REFERENCE NO. 23 SHEET 27 OF 33  
 NOTES CANTERBURY DATE 6/24/97 ROUTE SR 231  
 H.C. CANTERBURY WEATHER SUNNY COUNTY SENECA  
 R.C. ROUSOS TEMP. 89° TOWNSHIP CLINTON  
 SECTION 31  
 DWG BY NIESE PID PT-SEN19 T 2 N R 15 E

TYPE MONUMENT LG.R.R.SPIKE  
~~ON SURFACE~~ - BELOW 7"  
 OFFSET  $\odot$  PAVEMENT 1.0' LT : ~~RT~~  
8.9' TO LT EDGE PAVEMENT  
 STATION: 328+00



HORZ.DATUM: NAD83(2011) GEOID: 2012A  
 GRID: NORTHING: 516497.503 EASTING: 1782478.156

RECORD:  
 STA.327+06.1  
 FD R.R.SPIKE  
 ON  $\odot$  R/W  
 4" DOWN  
 FD LG.R.R.SPIKE  
 7" DOWN  
 6/27/97, MRC  
 SET P.K./WASHER  
 9/11/97, MRC  
 FD P.K./WASHER  
 8/17/04, MC  
 FD P.K./WASHER  
 REF23  
 4/25/19  
 8/16/19, JFO



# O.D.O.T. DISTRICT 2 SURVEY OFFICE

PERSONNEL

REFERENCE NO. 23

SHEET 27 OF 27

NOTES CANTERBURY

H.C. CANTERBURY

R.C. Rousos

Drawn By Rousos

DATE 6/24/97

WEATHER SUNNY

TEMP. +89°

ROUTE SR 231

COUNTY SENECA

TOWNSHIP Clinton

SECTION 31

T2 NR 15 E

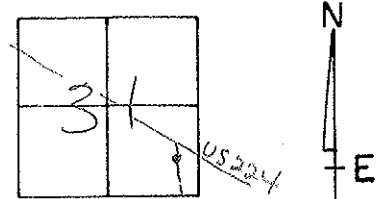
TYPE MONUMENT Lg RR Spk

ON SURFACE - BELOW 7"

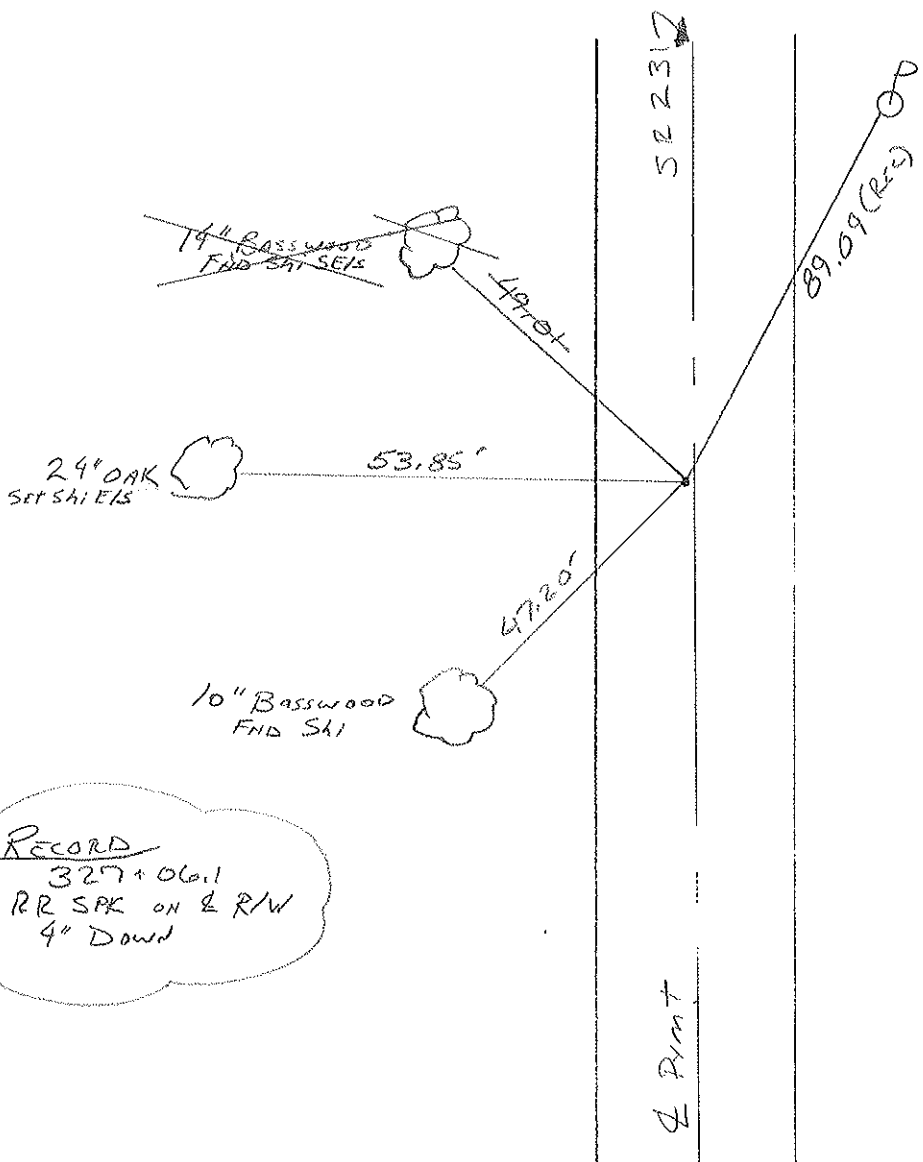
LEFT - 0 PAV'T. - RIGHT 1.0'

8.9 TO LT EDGE PAVEMENT

S.L.M. 9+997.30 m 328+00



(RESET PK/WASHEL  
9-11-97  
MRC RD)



RECORD  
327+06.1  
RR SPK ON & R/W  
4" Down

Preventive Maintenance  
Chip & Seal 2004  
Existing Point Uncovered  
Date 08/17/04 MC

PERSONNEL	TITLE	PERSONNEL	TITLE
Schneider			
Mosser			
Barbour			
Potts			

COUNTY Seneca DATE 10-30-69  
 S. R. 231 WEATHER Fair  
 SEC. B TEMP. 55°

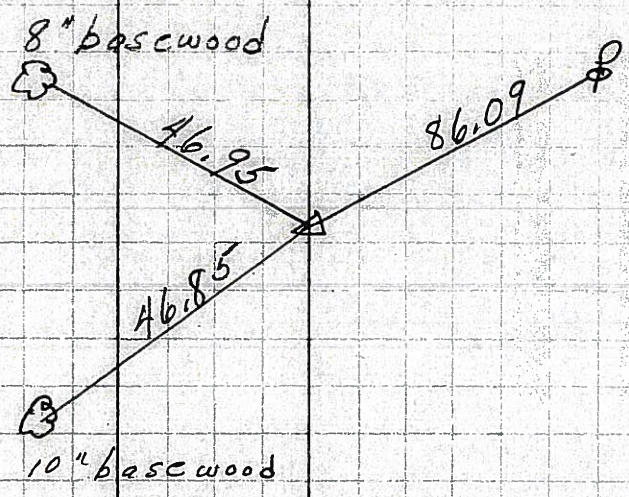
DESCRIPTION Wyandot Co. Line to U.S. 224 By-Pass JOB NO. \_\_\_\_\_  
 LEFT CENTER LINE RIGHT

(23)

See Ref # 23

327+06.1  
 R.R. spk. on E R/W  
 4" down

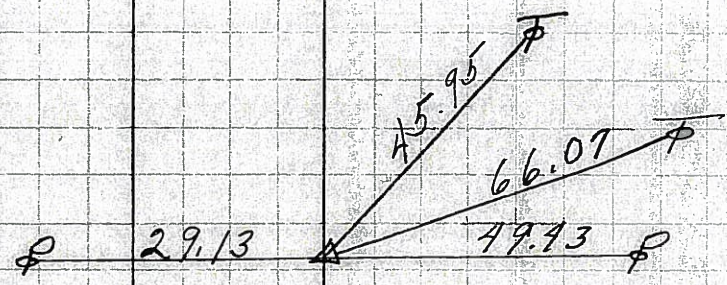
8683



(#22)

320+04.8  
 Iron Pin on E R/W  
 6" down

8682



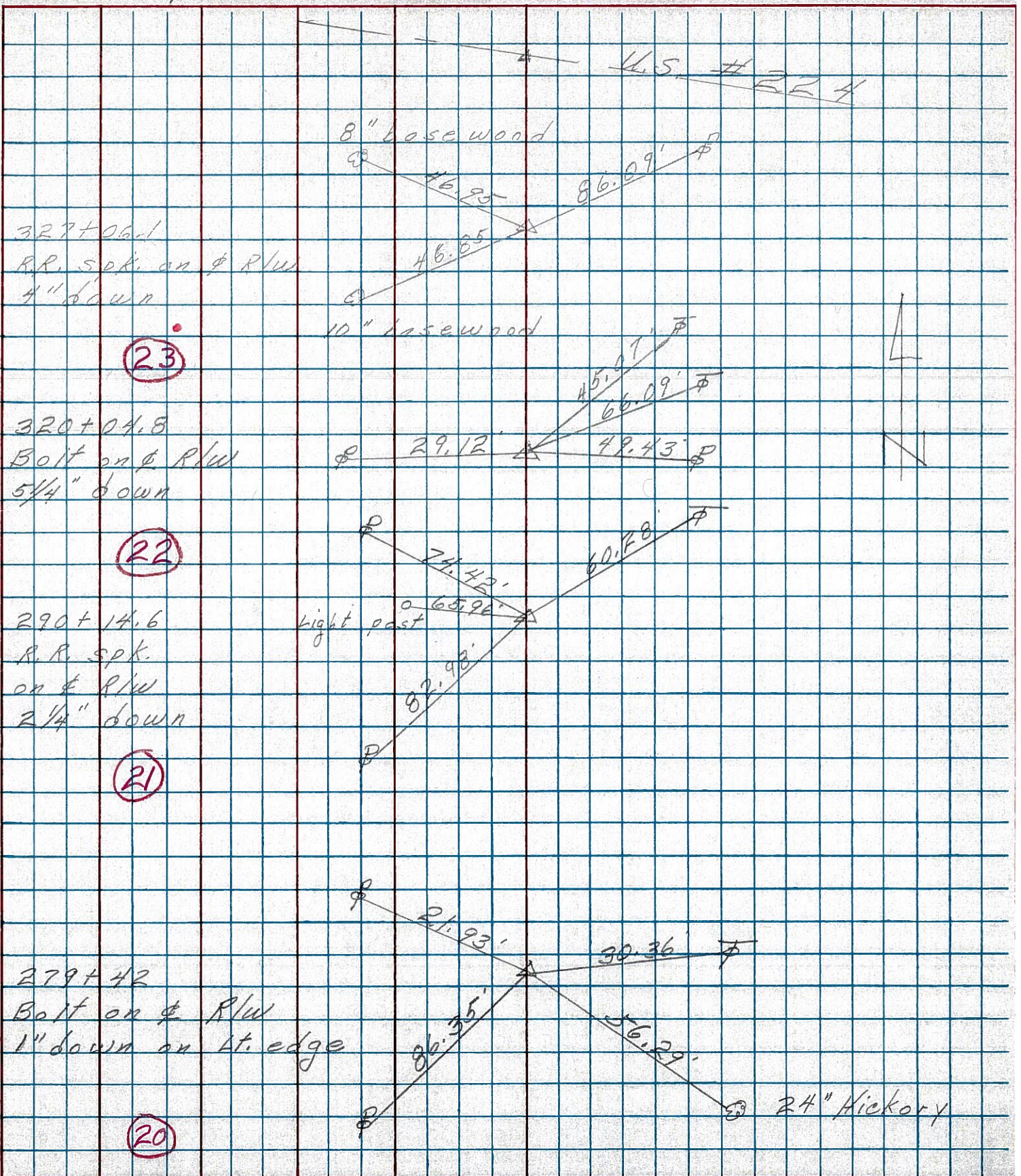
PERSONNEL TITLE PERSONNEL TITLE

COUNTY Seneca DATE 3-13-75

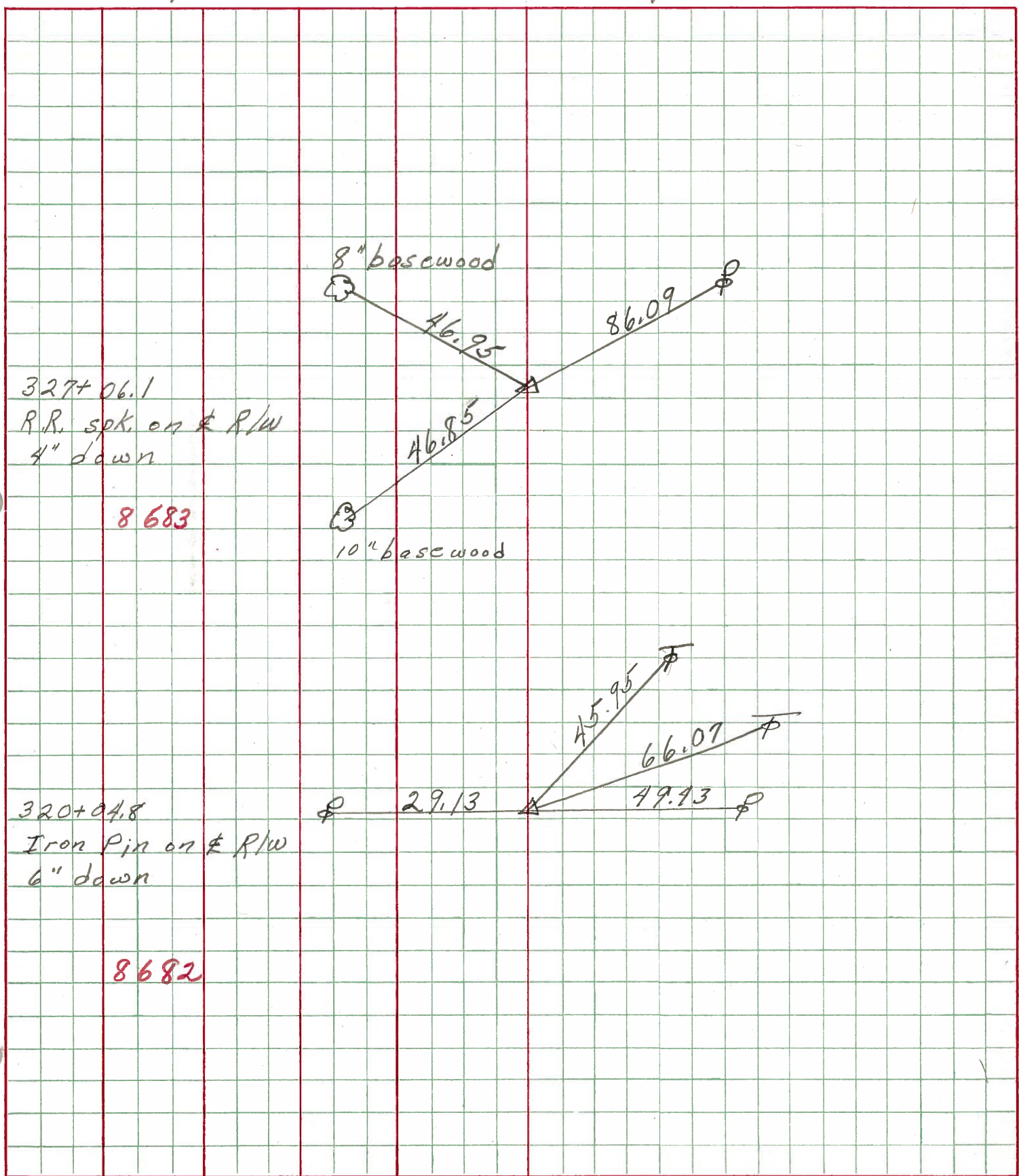
S. R. 231 WEATHER

SEC. B TEMP. 35°

DESCRIPTION Wyandot Co. line to U.S. 224 JOB NO.

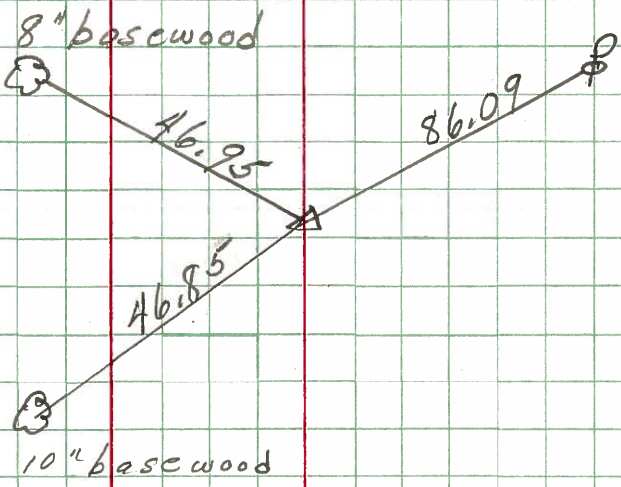


PERSONNEL	TITLE	PERSONNEL	TITLE	COUNTY	Seneca	DATE	10-30-69
Schneider				S. R.	231	WEATHER	Fair
Mosser				SEC.	B	TEMP.	55°
Barbour				DESCRIPTION <u>Wyandot Co. Line to U.S. 224 By-Pass</u>			
Potts				LEFT	CENTER LINE	RIGHT	JOB NO.



327+06.1  
R.R. spk. on R/W  
4" down

8683



320+04.8  
Iron Pin on R/W  
6" down

8682

