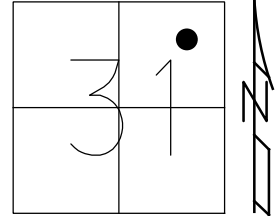


O.D.O.T. DISTRICT 2 SURVEY OFFICE (USE ONLY)

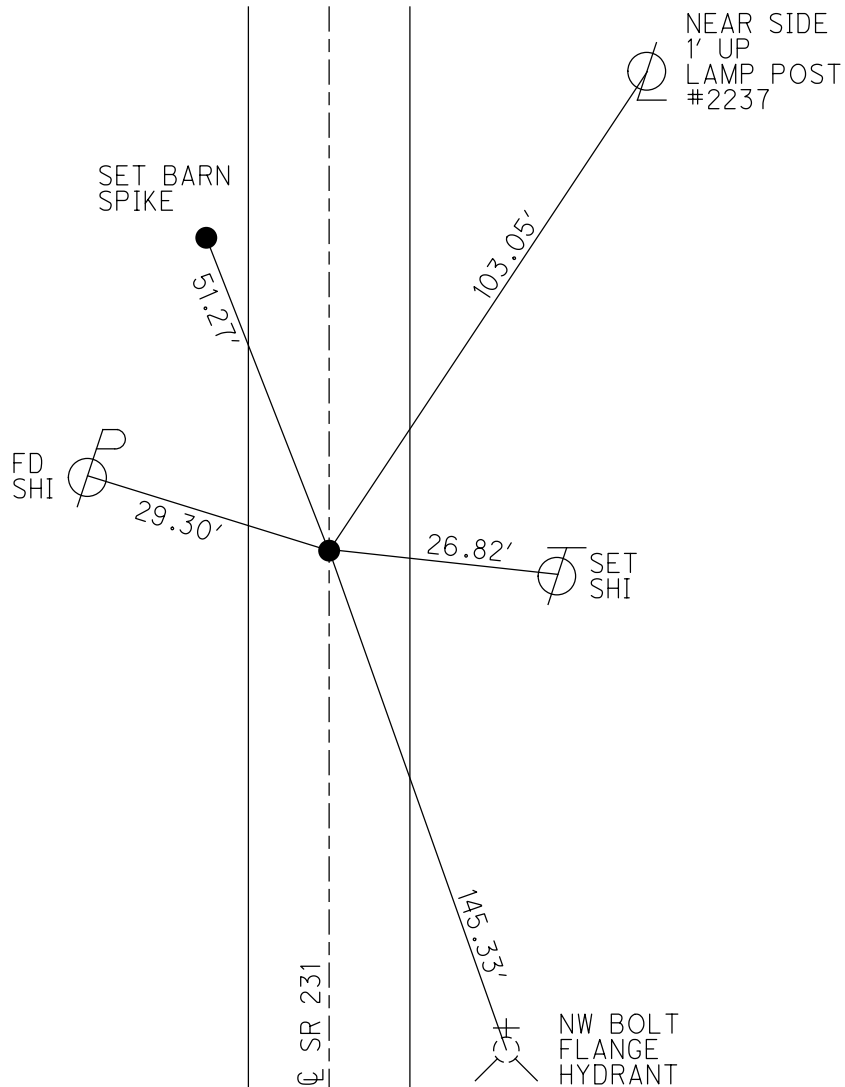
PERSONNEL \_\_\_\_\_ REFERENCE NO. 25 SHEET 30 OF 34  
 NOTES RHOADES DATE 11/2/23 ROUTE SR 231  
 H.C. AUBLE WEATHER CLOUDY COUNTY SENECA  
 R.C. MILLER TEMP. 39° TOWNSHIP CLINTON  
 DWG BY RHOADES PID 95780 SECTION 31  
 T 2 N R 15 E

TYPE MONUMENT MAG/WASHER  
 ON SURFACE - ~~BELOW~~ ON \_\_\_\_\_  
 OFFSET  $\varnothing$  PAVEMENT 0.5' ~~LT~~ : RT  
10.1' TO RT EDGE PAVEMENT  
 STATION: 360+94



HORZ. DATUM: NAD83(2011) GEOID: NAVD88 2018  
 GRID: NORTHING: 519792.671 EASTING: 1782502.786

RECORD:  
 FD P.K.NAIL  
 4" DOWN  
 SET MAG/WASHER  
 6/22/04, MC  
 FD P.K./WASHER  
 REF25  
 4/25/19  
 8/16/19, JFO  
 FD P.K.NAIL  
 REF25  
 4/20/23, TDN  
 SET MAG/WASHER  
 11/2/23, DSA



O.D.O.T. DISTRICT 2 SURVEY OFFICE (USE ONLY)

PERSONNEL \_\_\_\_\_ REFERENCE NO. 25 SHEET 29 OF 33  
 NOTES BARNHEISEL DATE 6/22/04 ROUTE SR 231  
 H.C. CANTERBURY WEATHER SUN COUNTY SENECA  
 R.C. ADKINS TEMP. 75° TOWNSHIP CLINTON  
 SECTION 31  
 DWG BY NIESE PID PT-SEN19 T 2 N R 15 E

TYPE MONUMENT P.K. NAIL

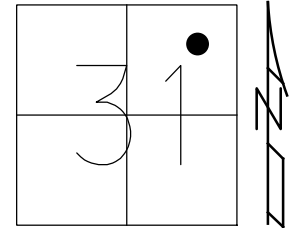
~~ON SURFACE~~ - BELOW 4"

OFFSET  $\odot$  PAVEMENT 0.5' ~~LT~~ : RT  
10.1' TO RT EDGE PAVEMENT

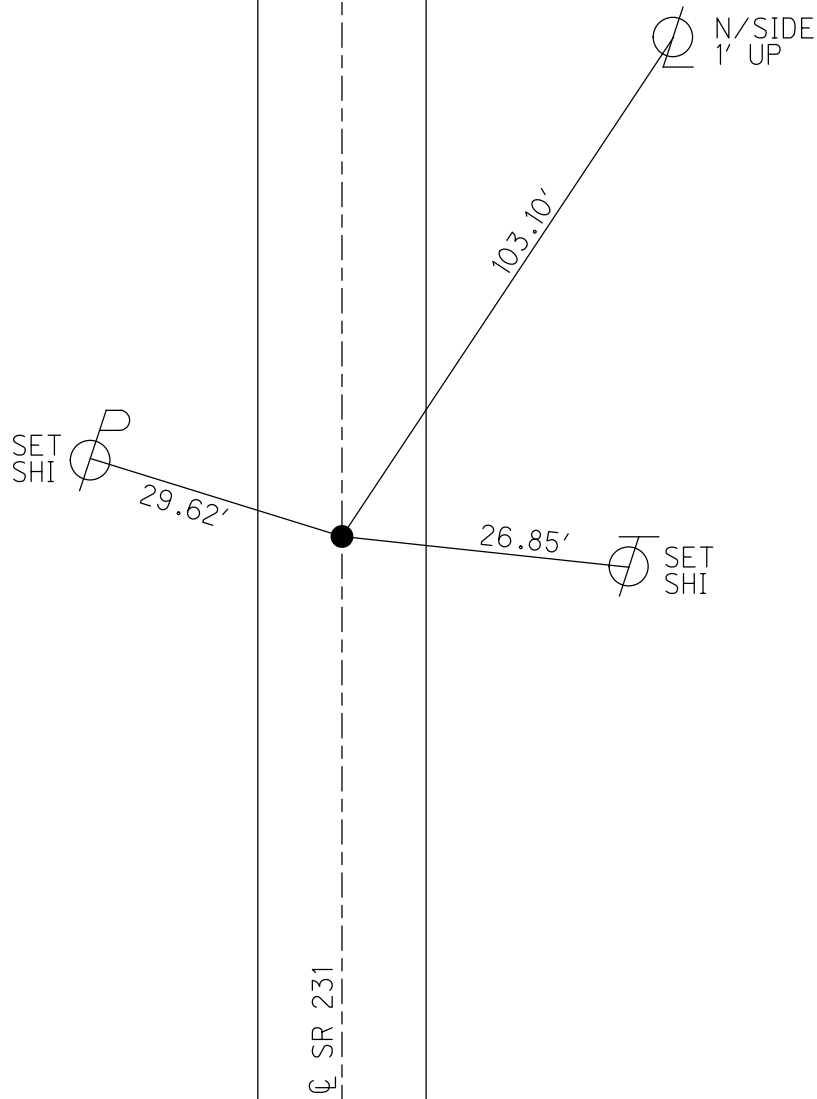
STATION: 360+94

HORZ.DATUM: NAD83(2011) GEOID: 2012A

GRID: NORTHING: 519792.671 EASTING: 1782502.786



RECORD:  
 FD P.K.NAIL  
 4" DOWN  
 SET MAG/WASHER  
 6/22/04, MC  
 FD P.K./WASHER  
 REF25  
 4/25/19  
 8/16/19, JFO



# O.D.O.T. DISTRICT 2 SURVEY OFFICE

PERSONNEL \_\_\_\_\_

REFERENCE NO. \_\_\_\_\_

SHEET \_\_\_\_\_ OF \_\_\_\_\_

NOTES BARNHISEL

H.C. CANTERBURY

R.C. ADKINS

DATE 6/22/04

WEATHER SUN

TEMP. +75°

ROUTE S.R. 231

COUNTY SENECA

TOWNSHIP CLINTON

SECTION 31

T 2 N R 15 E

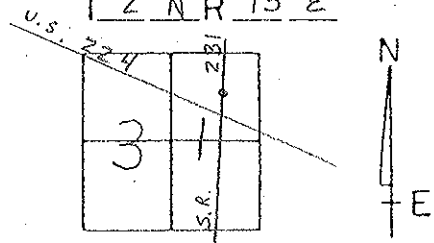
TYPE MONUMENT P.K. NAIL

ON SURFACE - BELOW 4" DOWN

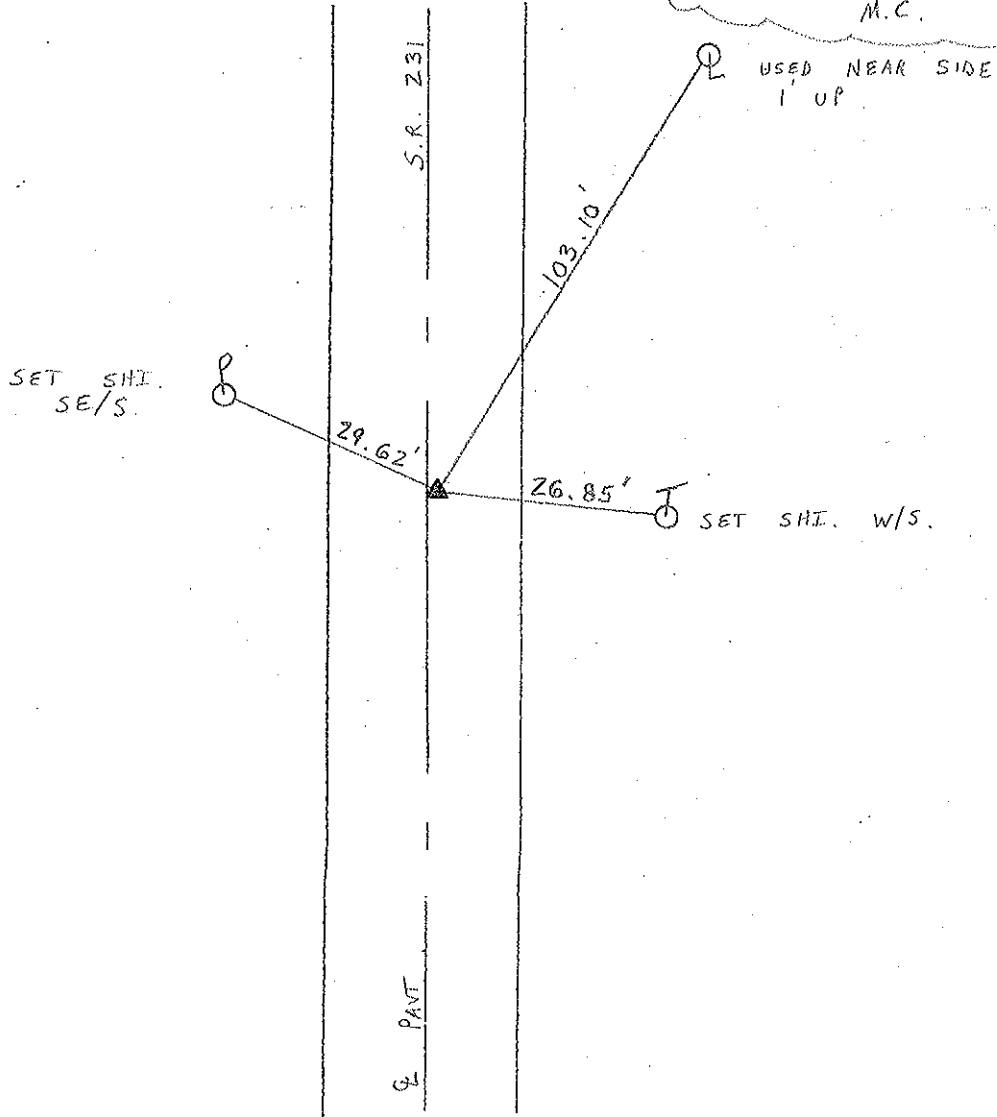
~~LEFT - C~~ PAV'T. - RIGHT 0.5' RT E

10.1' TO RT. EDGE PAVEMENT

S.L.M. 360 + 94



RESET MAG/WASHER TO SURFACE  
6/22/04  
M.C.



PERSONNEL TITLE PERSONNEL TITLE

Schneider  
Mosser  
Barbour  
Potts

Geyman

COUNTY Seneca

DATE 4-17-69

S. R. 231

WEATHER Fair

SEC. 6.47-7.26

TEMP. 80°

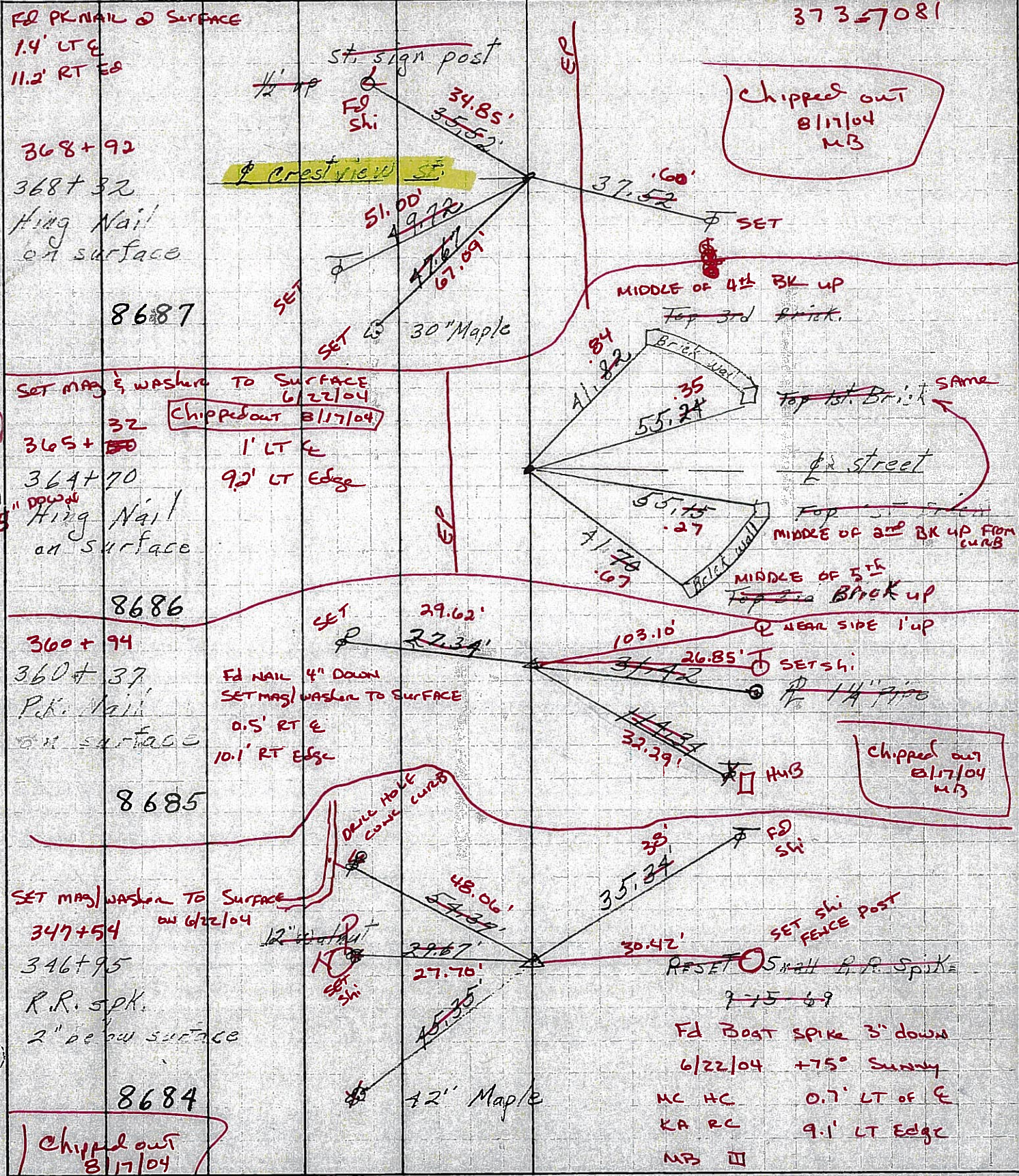
DESCRIPTION

Ties for Control Points

JOB NO.

Tiffin Garage

37357081



(27)

(26)

(25)

(24)

Chipped out  
8/17/04  
MB

Chipped out 8/17/04

Chipped out  
8/17/04  
MB

Chipped out  
8/17/04  
MB

MC HC 0.7' LT of E  
KA RC 9.1' LT Edge  
MB II

Fd Post spike 3" down  
6/22/04 +75° Sunny

RESET 0.5" wall R.R. Spike  
7-15-69

SET Shi FENCE POST

SET Shi 1/4" Pipe

Q NEAR SIDE 1' up

MIDDLE OF 5th Brick up  
Top 2nd Brick

MIDDLE OF 2nd BK UP FROM CURB

Q street

Top 1st Brick SAME

MIDDLE OF 4th BK UP  
Top 3rd Brick.

SET

30" Maple

51.00'  
49.72'

34.85'  
35.52'

St. sign post  
1/2 up  
Fd Shi

Crest view SE

Fd PK NAIL @ SURFACE  
1.4' LT E  
11.2' RT E

368+92  
368+32  
Hing Nail  
on surface

8687

SET MAG & WASH TO SURFACE  
6/22/04  
Chipped out 8/17/04

365+32  
364+70  
1' LT E  
9.2' LT Edge

8686

360+94  
360+37  
PK Nail  
on surface  
Fd NAIL 4" DOWN  
SET MAG & WASH TO SURFACE  
0.5' RT E  
10.1' RT Edge

8685

SET MAG & WASH TO SURFACE  
6/22/04

347+54  
346+95  
R.R. Spk.  
2" below surface

8684

12" Maple  
SET Shi

48.06'  
54.39'

29.67'  
27.70'

45.35'  
42" Maple

35.34'  
38'

30.42'  
RESET 0.5" wall R.R. Spike

103.10'  
26.85'  
37.42'

Q NEAR SIDE 1' up

MIDDLE OF 5th Brick up  
Top 2nd Brick

MIDDLE OF 2nd BK UP FROM CURB

Q street

Top 1st Brick SAME

MIDDLE OF 4th BK UP  
Top 3rd Brick.

SET

37.52'  
.60'

34.85'  
35.52'

37357081

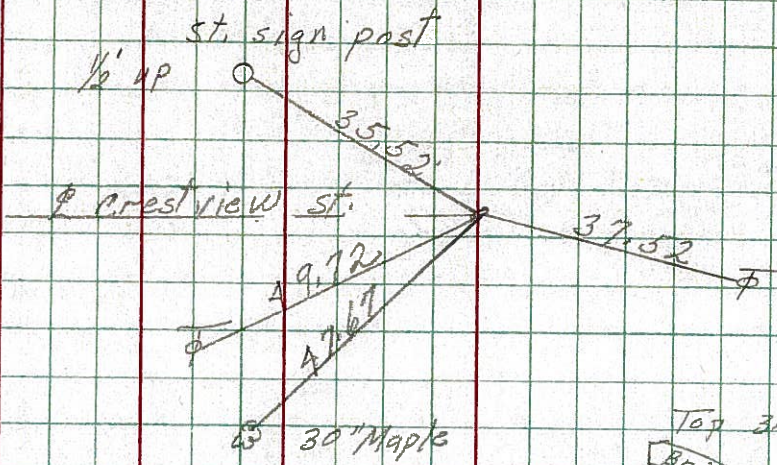
PERSONNEL TITLE PERSONNEL TITLE COUNTY Seneca DATE 4-17-69  
 Schneider Geyman  
 Mosser  
 Barbour  
 Potts  
 S. R. 231 WEATHER Fair  
 SEC. 6.47-7.26 TEMP. 80°

DESCRIPTION Ties for Control Points  
 LEFT CENTER LINE RIGHT JOB NO.

27

368+32  
 Hing Nail  
 on surface

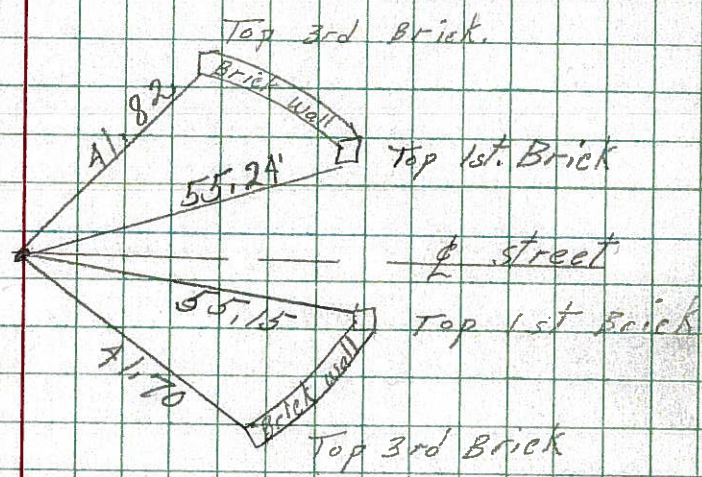
8687



26

364+70  
 Hing Nail  
 on surface

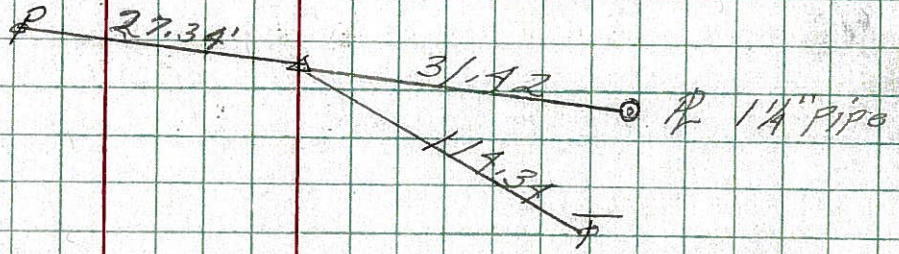
8686



25

360+37  
 P.K. Nail  
 on surface

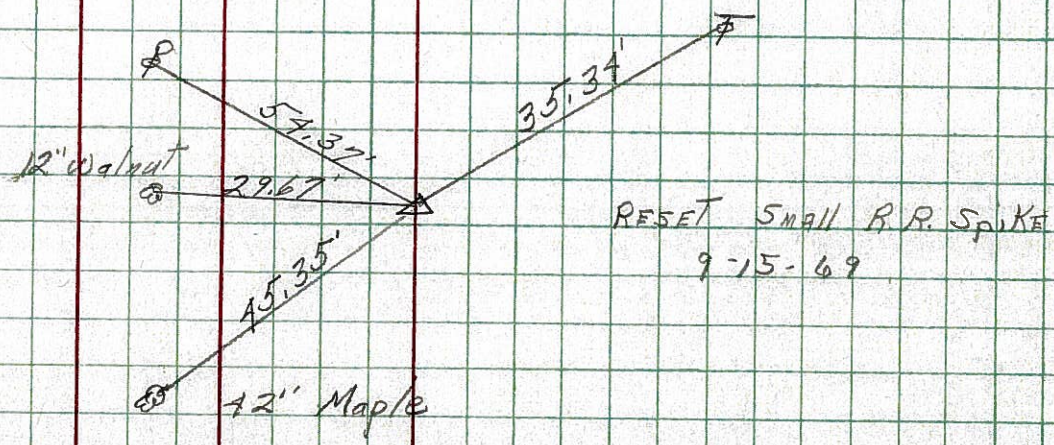
8685



24

346+95  
 R.R. spk.  
 2" below surface

8684



RESET Small R.R. Spike  
 9-15-69