

O.D.O.T. DISTRICT 2 SURVEY OFFICE (USE ONLY)

PERSONNEL

REFERENCE NO. 29

SHEET 34 OF 34

NOTES AUBLE

DATE 12/5/23

ROUTE SR 231

H.C. AUBLE

WEATHER CLOUDY

COUNTY SENECA

R.C. NIESE

TEMP. 37°

TOWNSHIP CLINTON

ASTON

SECTION 31

DWG BY RHOADES PID 95780

T 2 N R 15 E

TYPE MONUMENT ROUND MONBOX W/ 2 R.R.SPIKES

ON SURFACE - ~~BELOW~~ ON

OFFSET Q PAVEMENT 2.1' LT : ~~RT~~

8.0' TO LT EDGE PAVEMENT

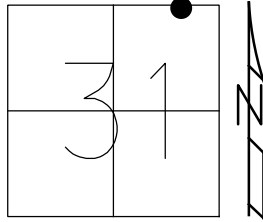
STATION: 374+27

HORZ.DATUM: NAD83(2011)

GEOID: NAVD88 2018

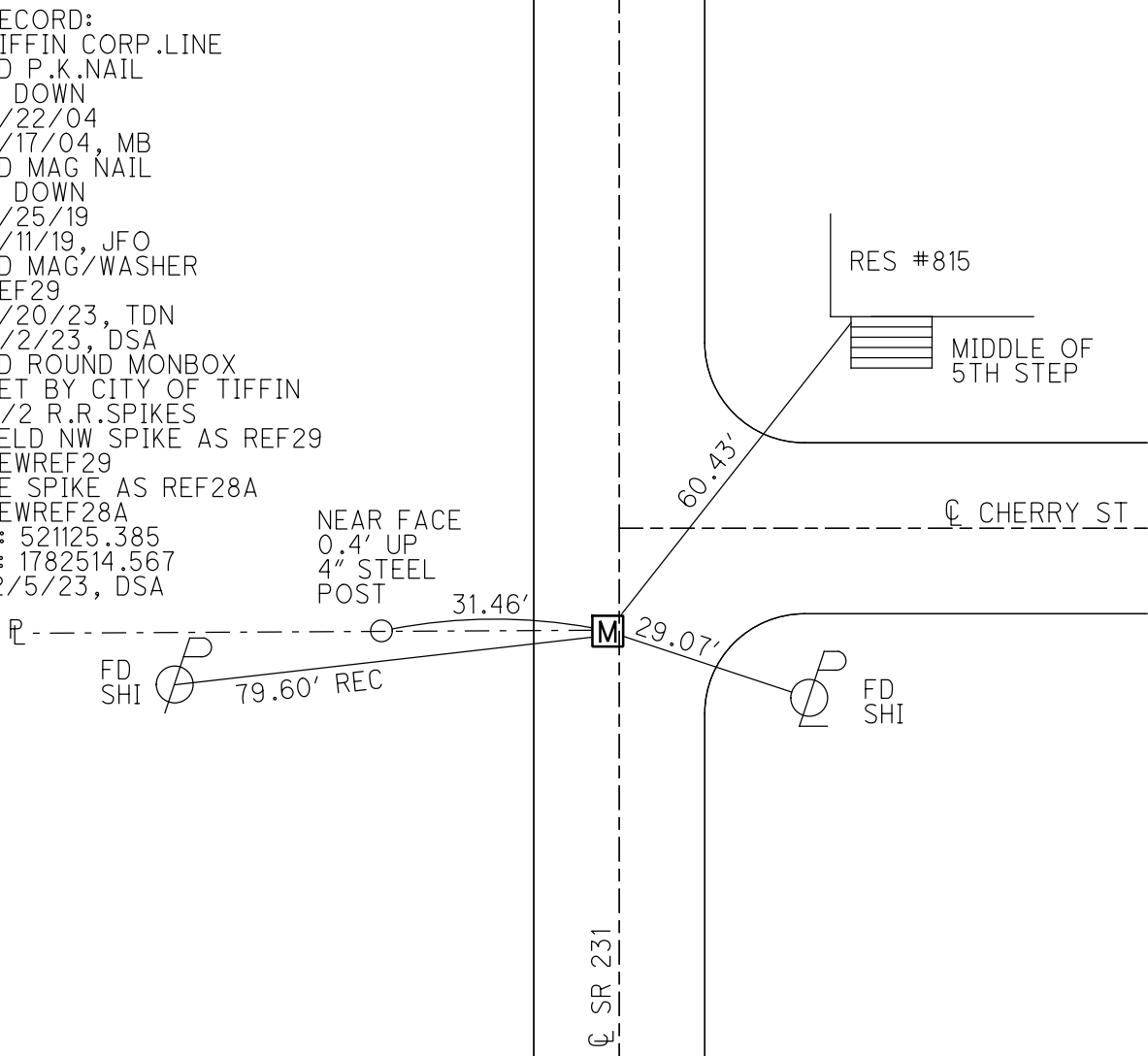
GRID: NORTHING: 521125.522

EASTING: 1782514.404



RECORD:
 TIFFIN CORP .LINE
 FD P.K.NAIL
 1" DOWN
 6/22/04
 8/17/04, MB
 FD MAG NAIL
 1" DOWN
 4/25/19
 8/11/19, JFO
 FD MAG/WASHER
 REF29
 4/20/23, TDN
 11/2/23, DSA
 FD ROUND MONBOX
 SET BY CITY OF TIFFIN
 W/2 R.R.SPIKES
 HELD NW SPIKE AS REF29
 NEWREF29
 SE SPIKE AS REF28A
 NEWREF28A
 N: 521125.385
 E: 1782514.567
 12/5/23, DSA

NEAR FACE
 0.4' UP
 4" STEEL
 POST



RES #815

MIDDLE OF
 5TH STEP

Q CHERRY ST

Q SR 231

O.D.O.T. DISTRICT 2 SURVEY OFFICE (USE ONLY)

PERSONNEL

REFERENCE NO. 29

SHEET 33 OF 33

NOTES BARNHISEL

DATE 6/22/04

ROUTE SR 231

H.C. CANTERBURY

WEATHER SUN

COUNTY SENECA

R.C. ADKINS

TEMP. 75°

TOWNSHIP CLINTON

SECTION 31

DWG BY NIESE

PID PT-SEN19

T 2 N R 15 E

TYPE MONUMENT P.K. NAIL

~~ON SURFACE~~ - BELOW 1"

OFFSET C PAVEMENT 2.1' LT : ~~RT~~

8.0' TO LT EDGE PAVEMENT

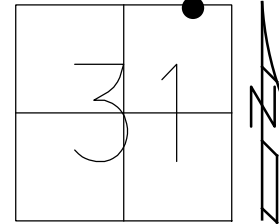
STATION: 374+27

HORZ.DATUM: NAD83(2011)

GEOID: 2012A

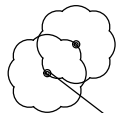
GRID: NORTHING: 521125.425

EASTING: 1782514.427



RECORD:
 TIFFIN CORP. LINE
 FD P.K. NAIL
 1" DOWN
 6/22/04
 8/17/04, MB
 FD MAG NAIL
 1" DOWN
 4/25/19
 8/11/19, JFO

SET SHI
 14" TWIN ASH



70.58'

RES #815

MIDDLE OF
 5TH STEP

60.44'

C CHERRY ST

12.3' REC

P

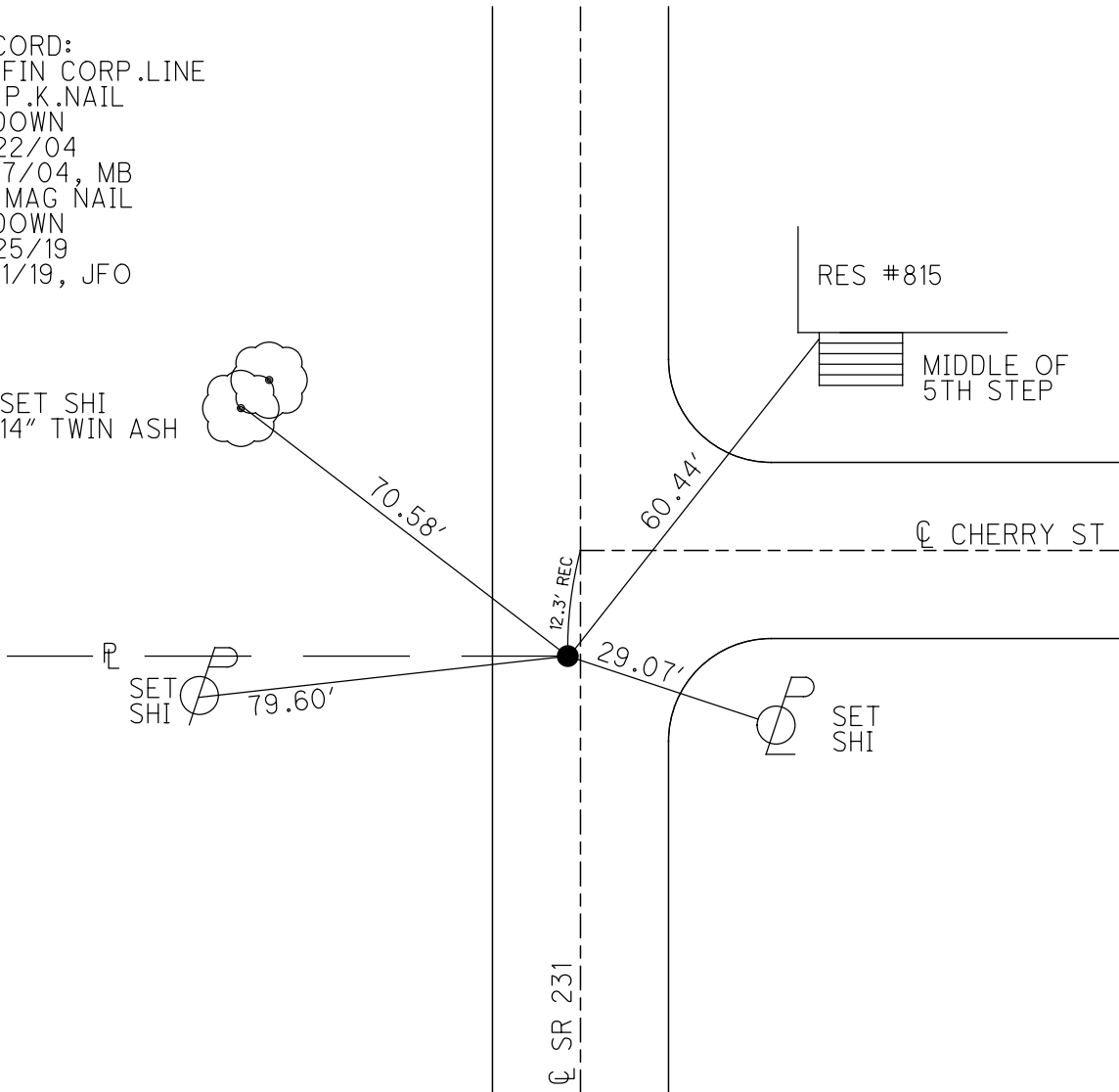
SET
 SHI

79.60'

29.07'

SET
 SHI

C SR 231



O.D.O.T. DISTRICT 2 SURVEY OFFICE

PERSONNEL _____

REFERENCE NO. _____

SHEET _____ OF _____

NOTES BARNHISEL

H.C. CANTERBURY

R.C. ADKINS

DATE 6/22/04

WEATHER SUN

TEMP. +75°

ROUTE S.R. 231

COUNTY SENECA

TOWNSHIP CLINTON

SECTION 31

T 2 N R 15 E

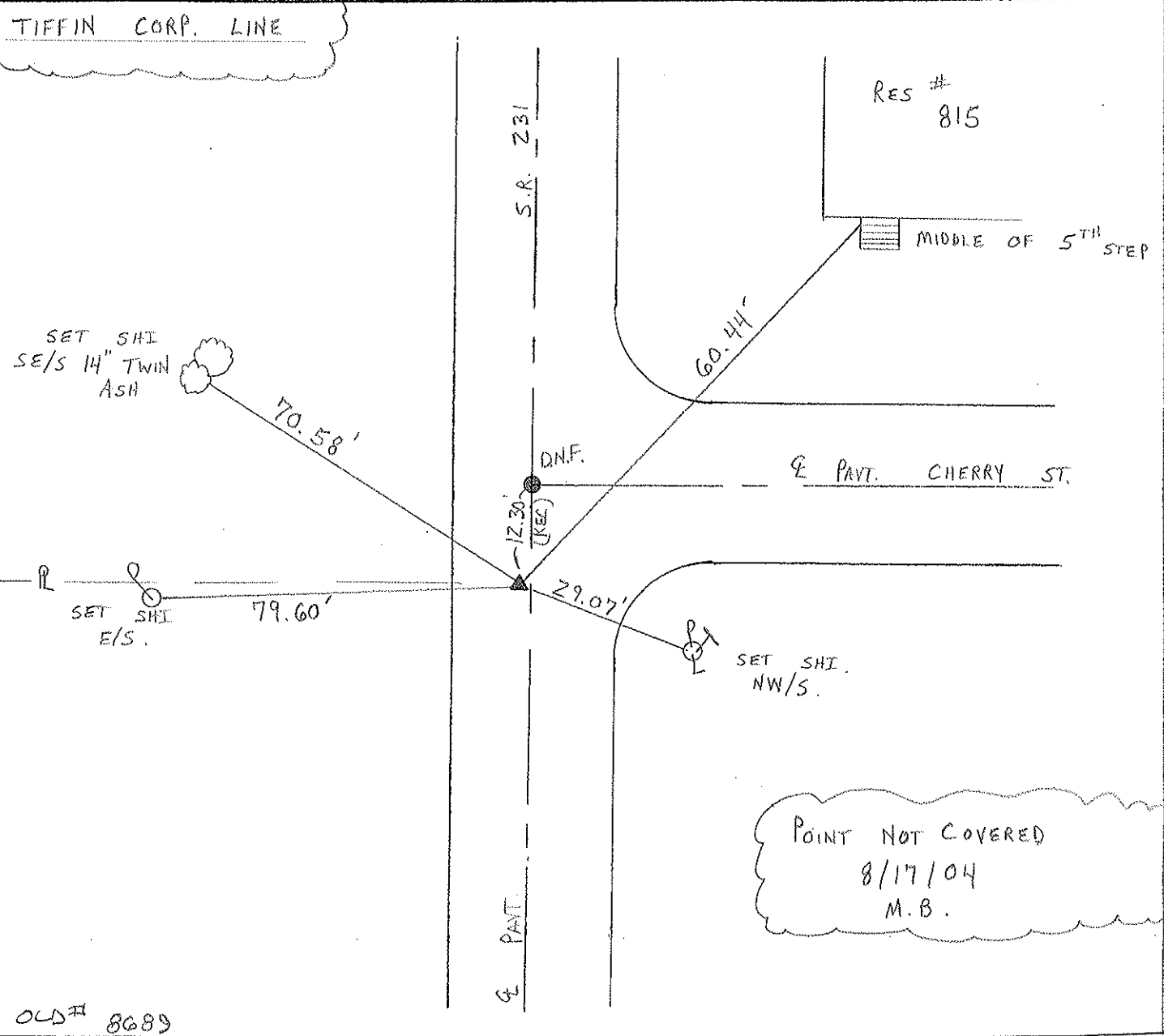
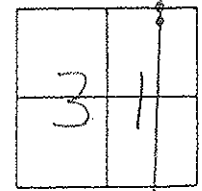
TYPE MONUMENT P.K. NAIL

ON SURFACE - BELOW 1" DOWN

LEFT - ℄ PAVT. - RIGHT 2.1' LT ℄

8.0' TO LT. EDGE PAVEMENT

S.L.M. 374 * 27



PERSONNEL	TITLE	PERSONNEL	TITLE
Schneider		Geyman	
Mosser			
Barbour			
Potts			

COUNTY Seneca DATE 4-17-69

S. R. 231 WEATHER Fair

SEC. 6.97-7.26 TEMP. 80°

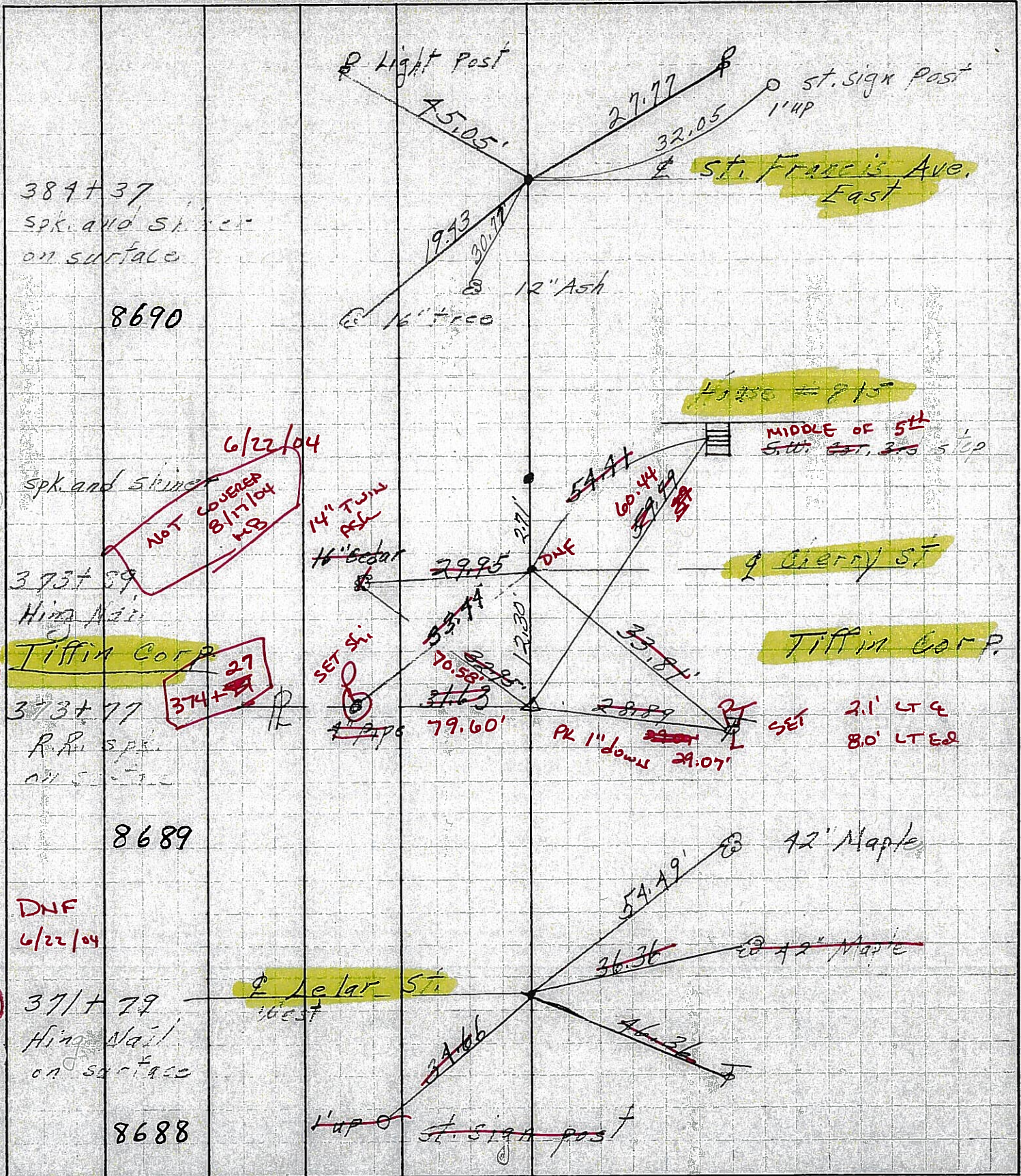
DESCRIPTION Ties for Control Points

JOB NO.

LEFT

CENTER LINE

RIGHT



389+37
spk. and shine
on surface

8690

spk. and shine

NOT COVERED
8/17/04
MS

373+39
Hing Nail

Tiffin Corp

27
374+39

373+77

R.R. spk.
on surface

8689

DNF
6/22/04

371+79
Hing Nail
on surface

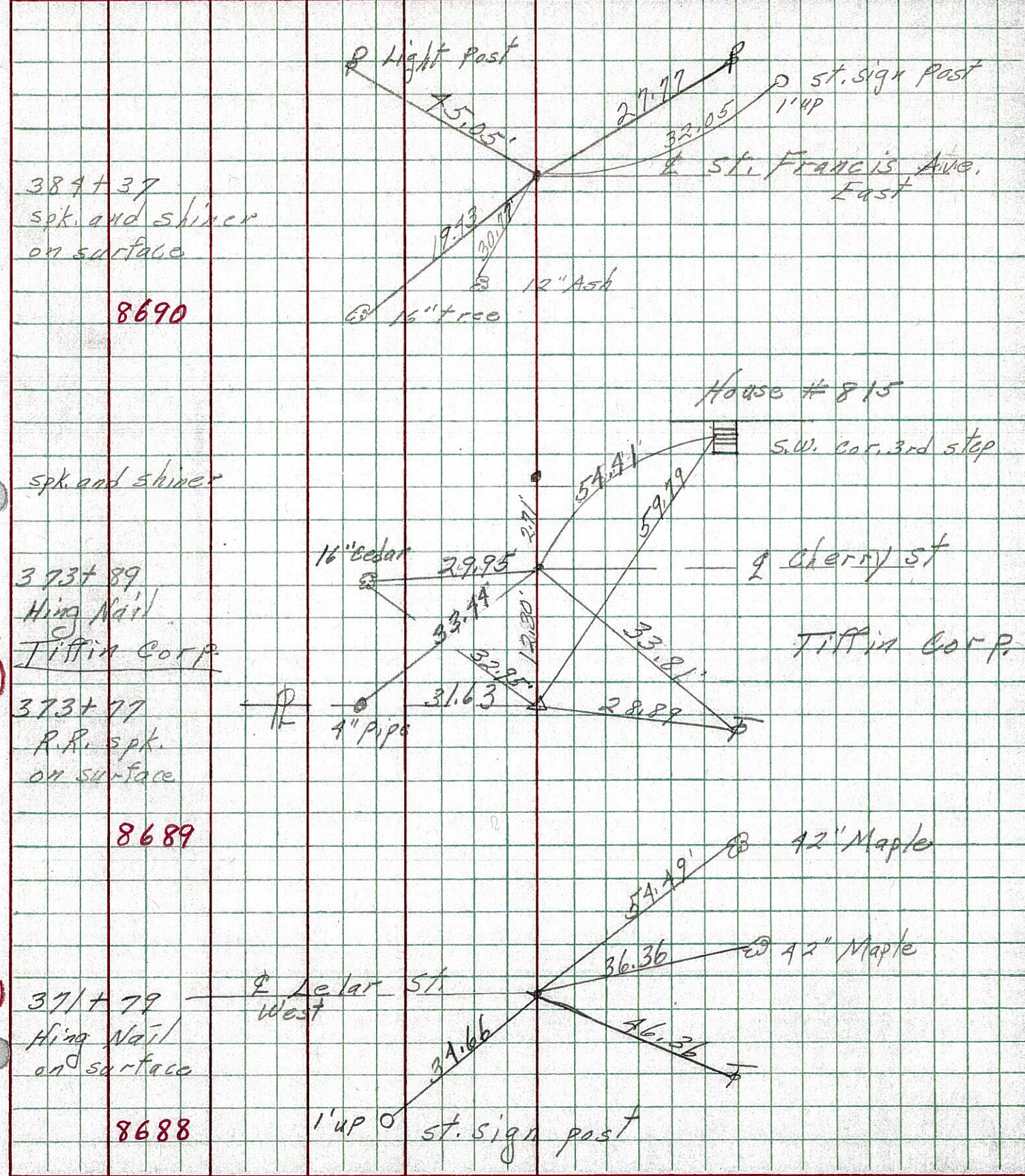
8688

29

28

PERSONNEL	TITLE	PERSONNEL	TITLE	COUNTY	DATE
Schneider		Geyman		Semeca	1-17-69
Mosser				S. R.	231
Barbour				WEATHER	Fair
Potts				SEC.	6.97-7.26
				TEMP.	80°

DESCRIPTION Ties for Control Points JOB NO. _____



29

28