

O.D.O.T. DISTRICT 2 SURVEY OFFICE (USE ONLY)

PERSONNEL

REFERENCE NO. 30

SHEET 1 OF 1

NOTES SEA DATE 12/14/18

ROUTE SR 231

H.C. SEA WEATHER CLOUDY

COUNTY SENECA

R.C. LL TEMP. 45°

TOWNSHIP CLINTON

DWG BY RHOADES PID 95778

SECTION 19

T 2 N R 15 E

TYPE MONUMENT MAG NAIL

ON SURFACE - ~~BELOW~~ ON

OFFSET 0 PAVEMENT                      LT : RT

- TO - EDGE PAVEMENT

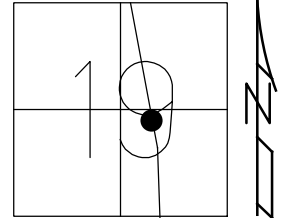
STATION: 488+67.21

HORZ.DATUM:                     

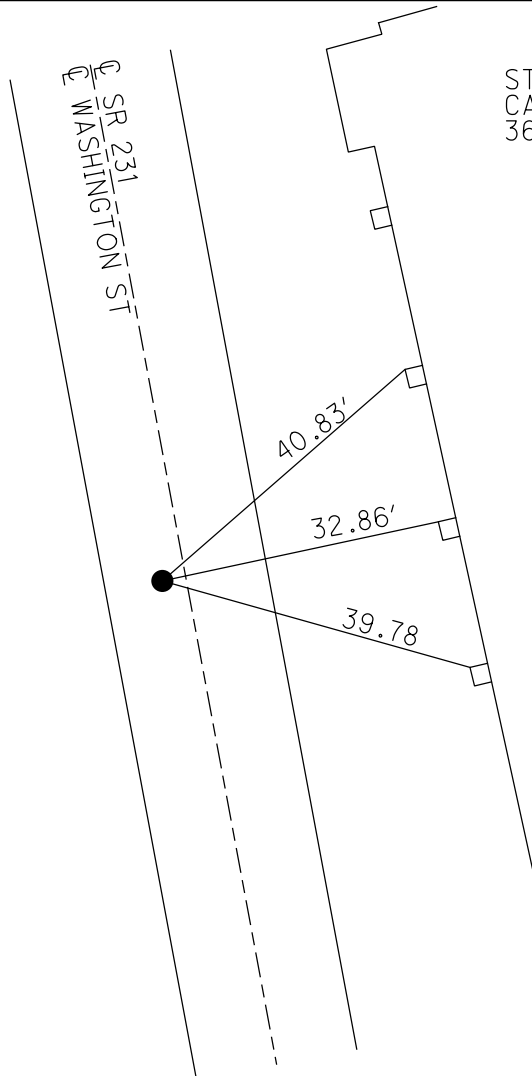
GEOID:                     

GRID: NORTHING: 526120.991

EASTING: 1782318.976



RECORD:  
SET MAG NAIL  
DGL ENGR. TIES  
12/14/18, DGL



ST JOSEPH  
CATHOLIC CHURCH  
36 MELMORE ST

NE CORNER  
COLUMNS