

O.D.O.T. DISTRICT 2 SURVEY OFFICE (USE ONLY)

PERSONNEL

REFERENCE NO. 1

SHEET 1 OF 6

NOTES CHENEY

DATE 7/28/93

ROUTE SR 269

H.C. RIPPLE

WEATHER FAIR

COUNTY SENECA

R.C. BARBOUR

TEMP. 85°

TOWNSHIP THOMPSON

GEYMAN

DWG BY NASON

PID 107060

SECTION 31

T 3 N R 18 E

TYPE MONUMENT R.R. SPIKE

~~ON SURFACE~~ - BELOW 3"

OFFSET ϕ PAVEMENT ON LT : RT

11.5' TO RT EDGE PAVEMENT

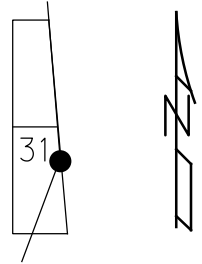
STATION: 0+00

HORZ.DATUM: NAD83 (2011)

GEOID: 2012A

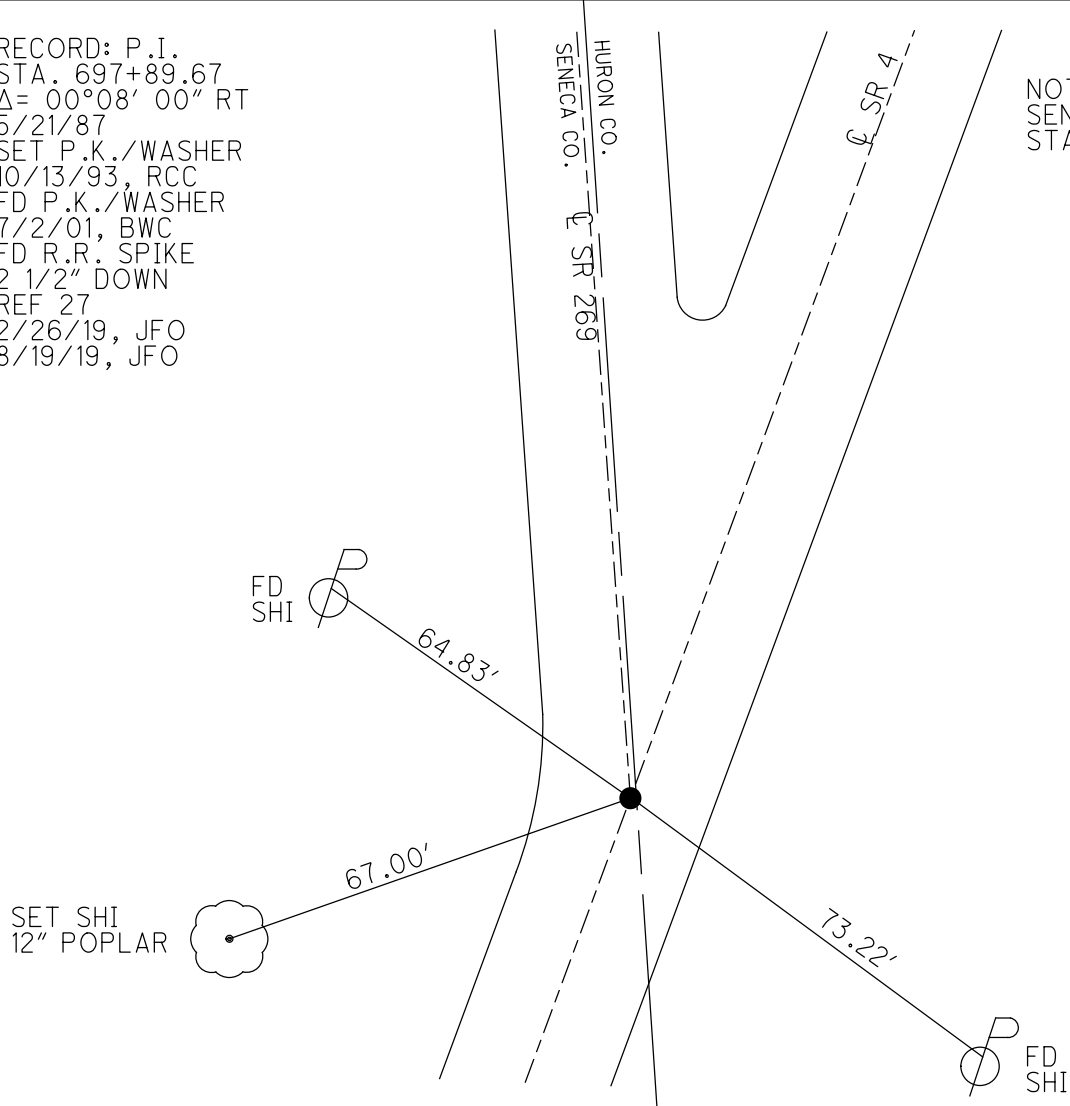
GRID: NORTHING: 549323.697

EASTING: 1875809.893



RECORD: P.I.
 STA. 697+89.67
 $\Delta = 00^{\circ}08' 00''$ RT
 5/21/87
 SET P.K./WASHER
 10/13/93, RCC
 FD P.K./WASHER
 7/2/01, BWC
 FD R.R. SPIKE
 2 1/2" DOWN
 REF 27
 2/26/19, JFO
 8/19/19, JFO

NOTE:
 SEN SR 4 REF 27
 STA. 700+55



O.D.O.T. DISTRICT 2 SURVEY OFFICE (USE ONLY)

PERSONNEL

REFERENCE NO. 1 A

SHEET 2 OF 6

NOTES SCHNEIDER

DATE 7/14/71

ROUTE SR 269

H.C. MOSSER

WEATHER FAIR

COUNTY SENECA

R.C. GEYMAN

TEMP. 75°

TOWNSHIP THOMPSON

VINSON

SECTION 31

DWG BY NIESE PID _____

T 3 N R 18 E

TYPE MONUMENT R.R. SPIKE

~~ON SURFACE~~ - BELOW 1 1/2"

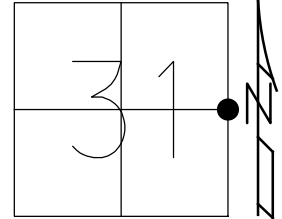
OFFSET CL PAVEMENT _____ ON _____ LT : RT

_____ TO _____ EDGE PAVEMENT

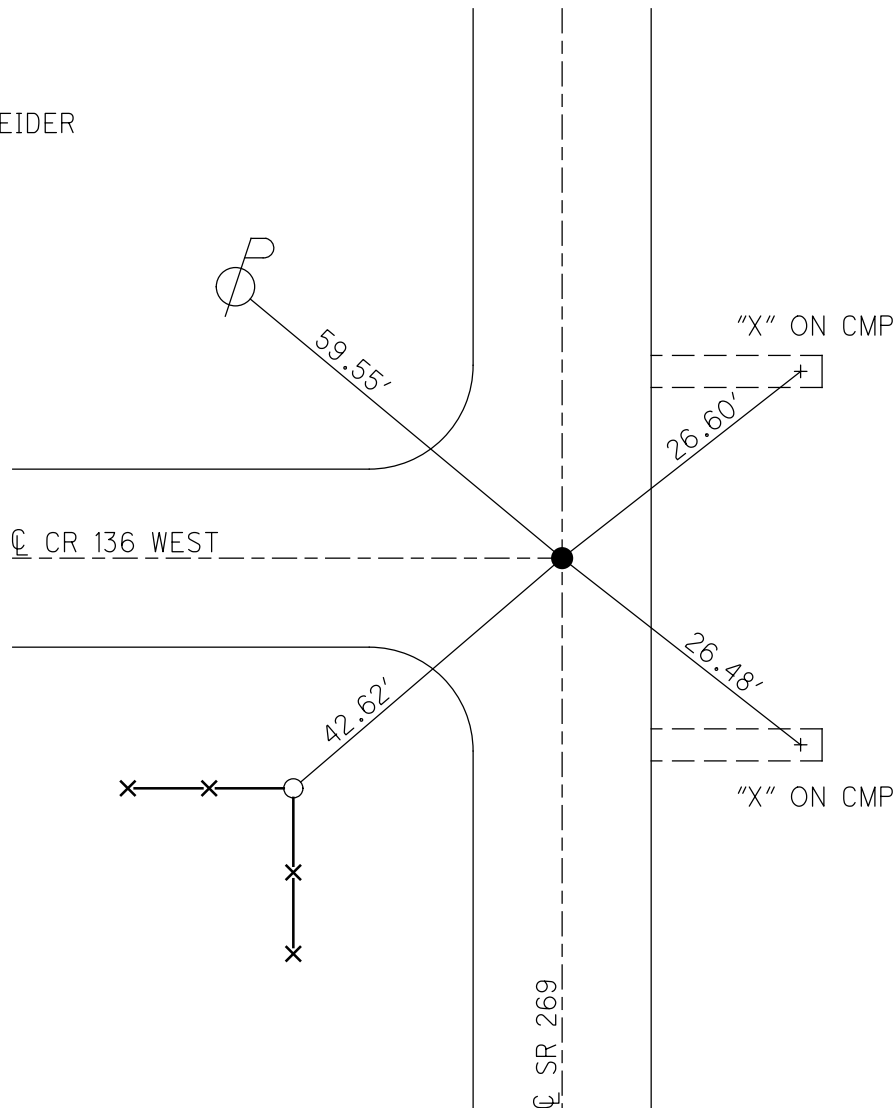
STATION: 4+45

HORZ.DATUM: _____ GEOID: _____

GRID: NORTHING: _____ EASTING: _____



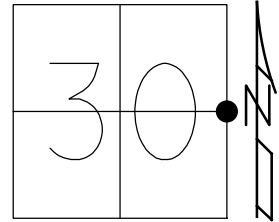
RECORD:
FD R.R. SPIKE
1 1/2" DOWN
7/14/71, SCHNEIDER



O.D.O.T. DISTRICT 2 SURVEY OFFICE (USE ONLY)

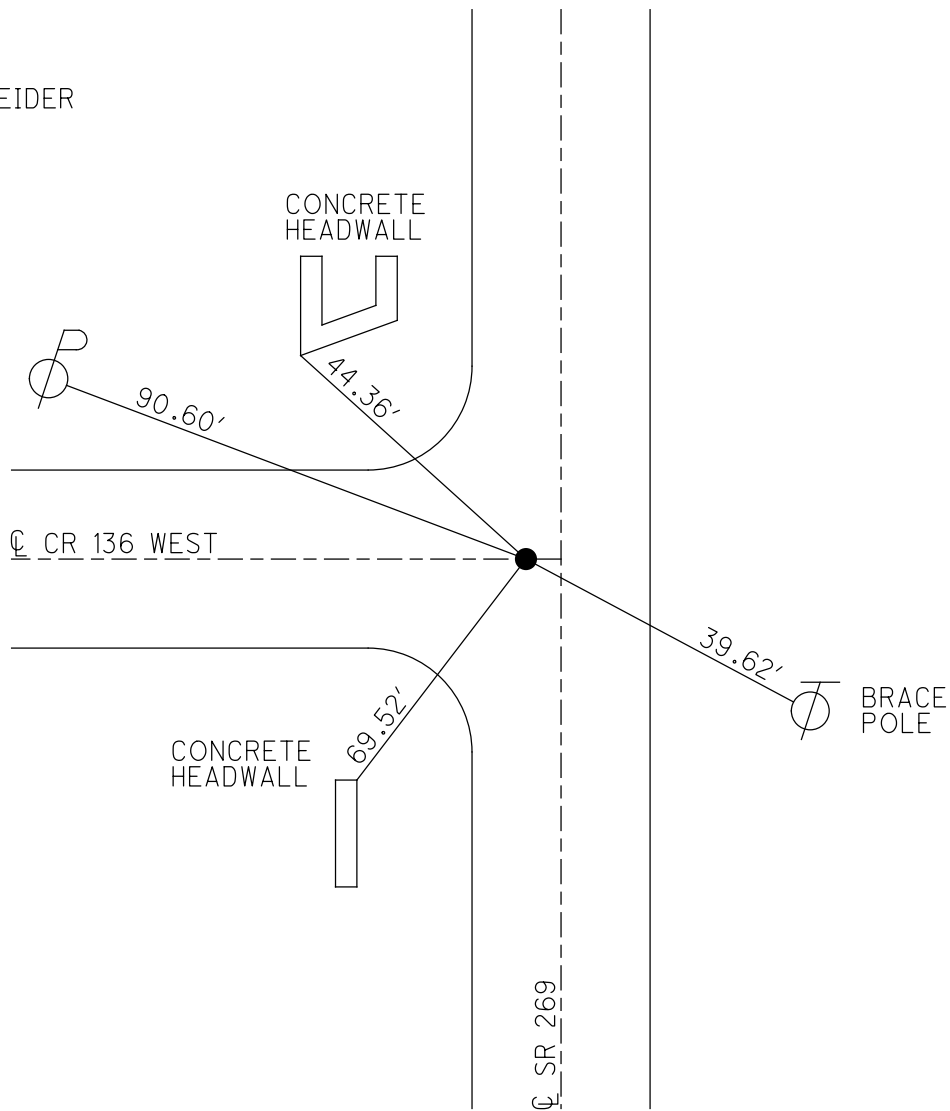
PERSONNEL _____ REFERENCE NO. 2 SHEET 3 OF 6
 NOTES SCHNEIDER DATE 7/14/71 ROUTE SR 269
 H.C. MOSSER WEATHER FAIR COUNTY SENECA
 R.C. GEYMAN TEMP. 75° TOWNSHIP THOMPSON
VINSON SECTION 30
 DWG BY NIESE PID _____ T 3 N R 18 E

TYPE MONUMENT P.K. NAIL
 ON SURFACE - ~~BELOW~~ ON
 OFFSET \bar{C} PAVEMENT 3.0' LT : ~~RT~~
- TO - EDGE PAVEMENT
 STATION: 57+55



HORZ. DATUM: _____ GEOID: _____
 GRID: NORTHING: _____ EASTING: _____

RECORD:
 FD P.K. NAIL
 7/14/71, SCHNEIDER



O.D.O.T. DISTRICT 2 SURVEY OFFICE (USE ONLY)

PERSONNEL

REFERENCE NO. 7

SHEET 4 OF 6

NOTES SCHNEIDER

DATE 7/14/71

ROUTE SR 269

H.C. MOSSER

WEATHER FAIR

COUNTY SENECA

R.C. GEYMAN

TEMP. 75°

TOWNSHIP THOMPSON

VINSON

SECTION 18

DWG BY NIESE

PID _____

T 3 N R 18 E

TYPE MONUMENT R.R. SPIKE

~~ON SURFACE~~ - BELOW 1 1/2"

OFFSET C PAVEMENT _____ ON _____ LT : RT

_____ TO _____ EDGE PAVEMENT

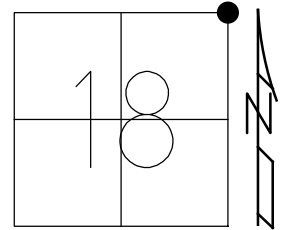
STATION: 189+55

HORZ. DATUM: _____

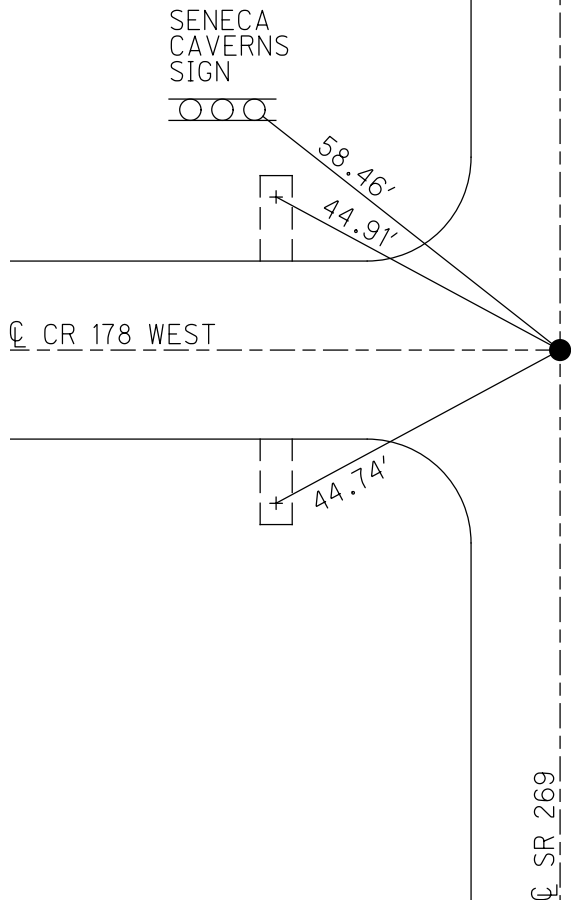
GEOID: _____

GRID: NORTHING: _____

EASTING: _____



RECORD:
FD R.R. SPIKE
1 1/2" DOWN
7/14/71, SCHNEIDER



C SR 269

O.D.O.T. DISTRICT 2 SURVEY OFFICE (USE ONLY)

PERSONNEL

REFERENCE NO. 9

SHEET 5 OF 6

NOTES SCHNEIDER

DATE 7/14/71

ROUTE SR 269

H.C. MOSSER

WEATHER FAIR

COUNTY SENECA

R.C. GEYMAN

TEMP. 75°

TOWNSHIP THOMPSON

VINSON

SECTION 7

DWG BY NIESE PID _____

T 3 N R 18 E

TYPE MONUMENT SQ. PIN

~~ON SURFACE~~ - BELOW 4"

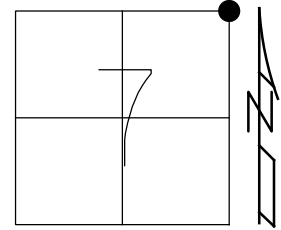
OFFSET \odot PAVEMENT ON LT : RT

- TO - EDGE PAVEMENT

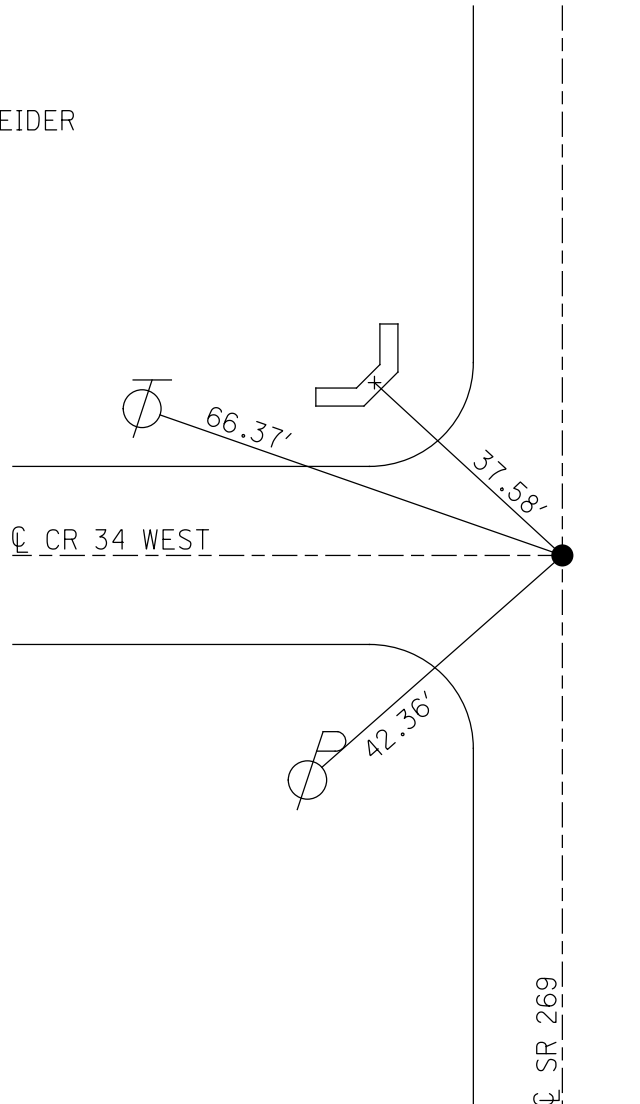
STATION: 242+35

HORZ. DATUM: _____ GEOID: _____

GRID: NORTHING: _____ EASTING: _____



RECORD:
FD SQ. PIN
4" DOWN
7/14/71, SCHNEIDER



O.D.O.T. DISTRICT 2 SURVEY OFFICE (USE ONLY)

PERSONNEL

REFERENCE NO. 11

SHEET 6 OF 6

NOTES SCHNEIDER

DATE 7/14/71

ROUTE SR 269

H.C. MOSSER

WEATHER FAIR

COUNTY SENECA

R.C. GEYMAN

TEMP. 75°

TOWNSHIP THOMPSON

VINSON

SECTION 1

DWG BY NIESE PID _____

T 3 N R 17 E

TYPE MONUMENT R.R. SPIKE

~~ON SURFACE~~ - BELOW 3"

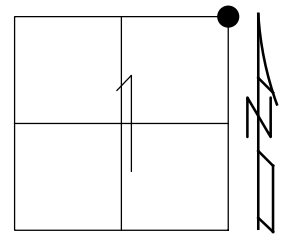
OFFSET \varnothing PAVEMENT _____ LT : RT

2.0' TO LT EDGE PAVEMENT

STATION: 297+26

HORIZ.DATUM: _____ GEOID: _____

GRID: NORTHING: _____ EASTING: _____



RECORD:
FD R.R. SPIKE
3" DOWN
7/14/71, SCHNEIDER

