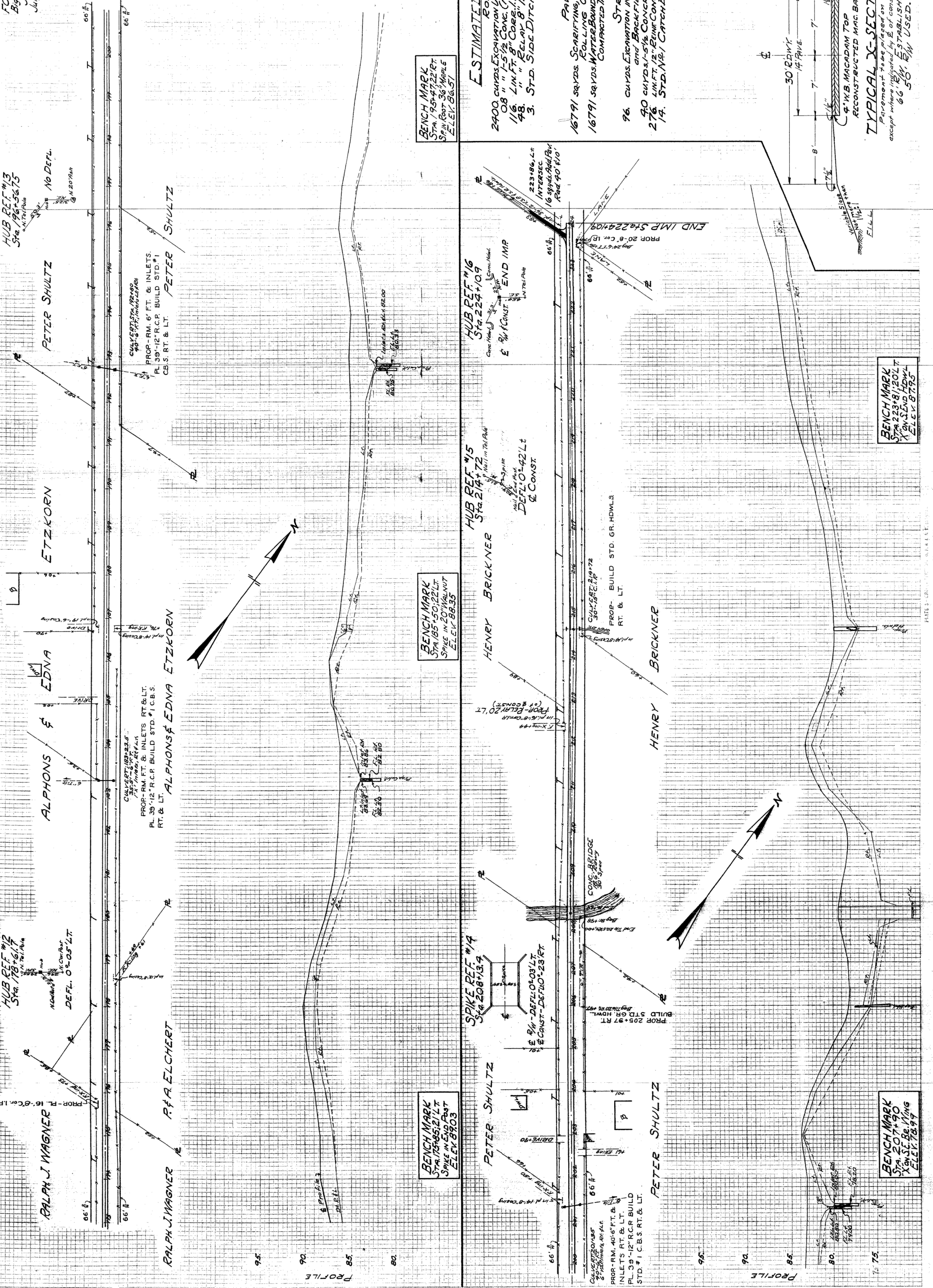


FOSTOR, 2-NEW PIEGEL RD., CH#1
 Big Spring, Va. #19-C, Shenandoah County
 J.B. Felt, Engineer, Co. Surveyor
 July 1934 F.B. 7-A File #13-1-23

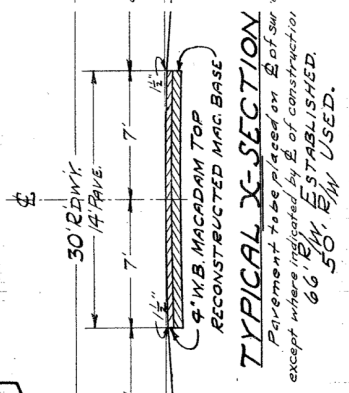
2



BENCH MARK
 STA. 195+47.22 RT.
 SP. IN FOOT 36" MAPLE
 ELEV. 86.51

ESTIMATED QUANTITIES.

- 2400 CUB. EXCAVATION UNCLASS. INCL. FIN. BEAMS, SLOPES & DITCHES
 - 08 " 1-5 1/2 CONE (7) DWLS
 - 116 LIN. FT. 8" CORE. I.P. (6 & 16, 1 @ 20)
 - 48 " 1" RELAY 8" I.P. (32 @ 151 + 6 & 16 @ 212 + 4)
 - 3. STD. SIDE DITCH INLETS.
- PAVEMENT
 16791 SQ. YDS. SCARIFYING, PLACING ON 6", RESHAPING AND ROLLING OLD MAC. ROADWAY IN PLACE.
 16791 SQ. YDS. WATER BOUND MAC. 1/4" MIN. TOP COURSE, 4" MIN. COMPACTED THICKNESS, USING A MIN. OF 30% TONS STONE
- STRUCTURES
 96 CUB. EXCAVATION INCL. REPAIR OF OLD STRUCTURES and BACKFILLING (1" HDWL. @ 12" S.E.)
- 40 CUB. 5-1/2" CONC. (1" HDWL. @ 12" S.E.)
 276 LIN. FT. 12" REINFORCING PIPE
 14. STD. N.W. / CATCH BASINS.



BENCH MARK
 STA. 185+50.22 LT.
 SPIKE IN 20" WALNUT
 ELEV. 88.35

HUB REF #15
 STA. 214+72
 HENRY BRICKNER

HUB REF #16
 STA. 224+09
 END IMP

BENCH MARK
 STA. 175+85.21 LT.
 SPIKE IN END POST
 ELEV. 88.03

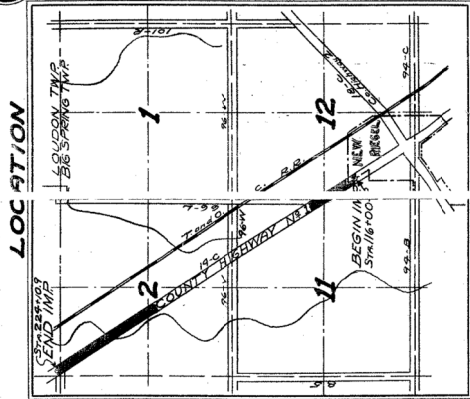
SPIKE REF #19
 STA. 208+13.4
 PETER SHULTZ

BENCH MARK
 STA. 207+90
 X ON 32" BE. MING
 ELEV. 78.97

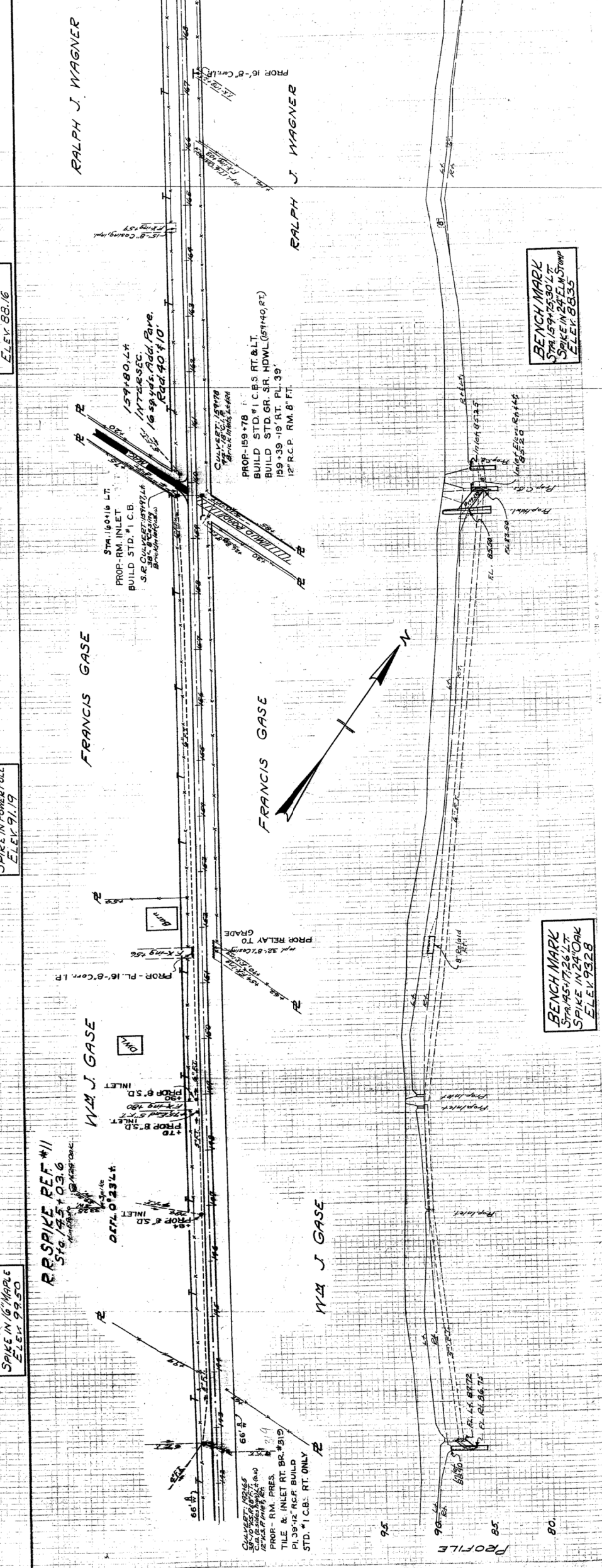
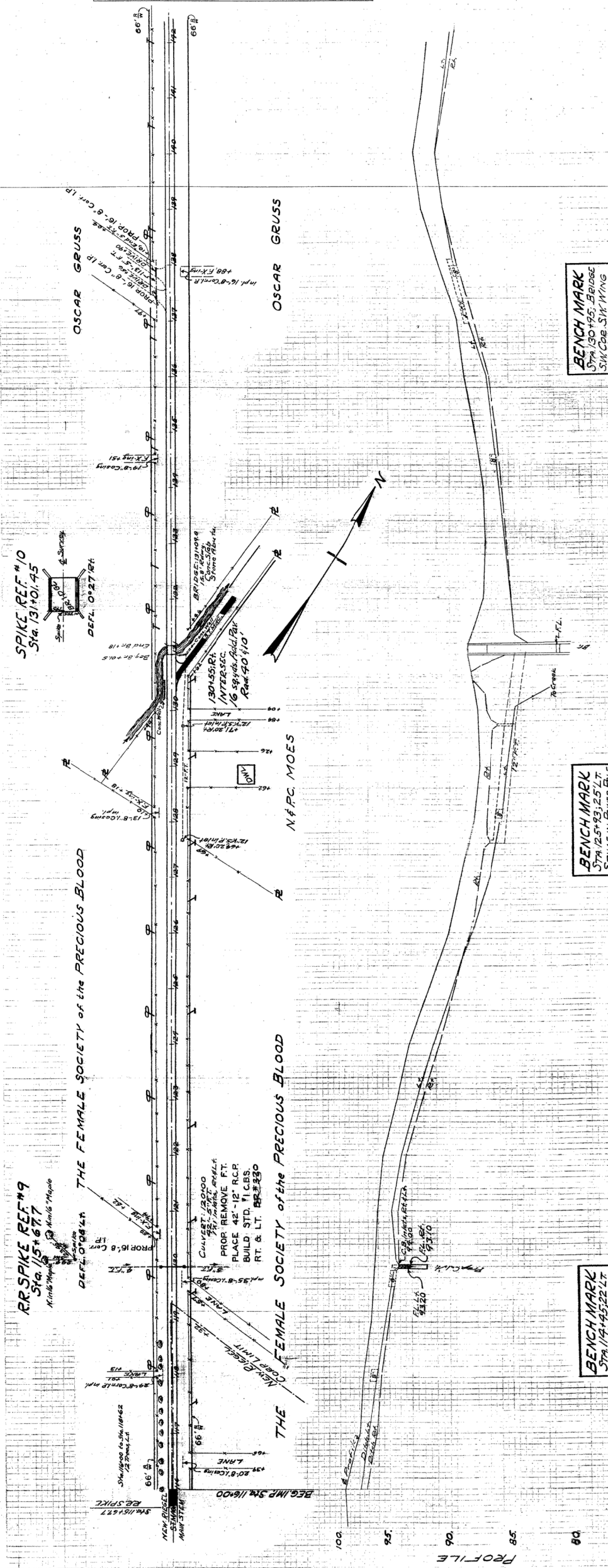
BENCH MARK
 STA. 223+81.20 LT.
 X ON 12" DOWEL
 ELEV. 87.75

FOSTER, F. NEW RIEGEL RD., CHINA
Big Spring, Tex. #17-C, Seneca County
J.B. Pfeiffer, Surveyor
July 1934 F.B. #18-13:23

1
2



NO. 1 E
SUMMARY OF QUARTS. SHEET 2
TYPICAL X-SECTION



6060