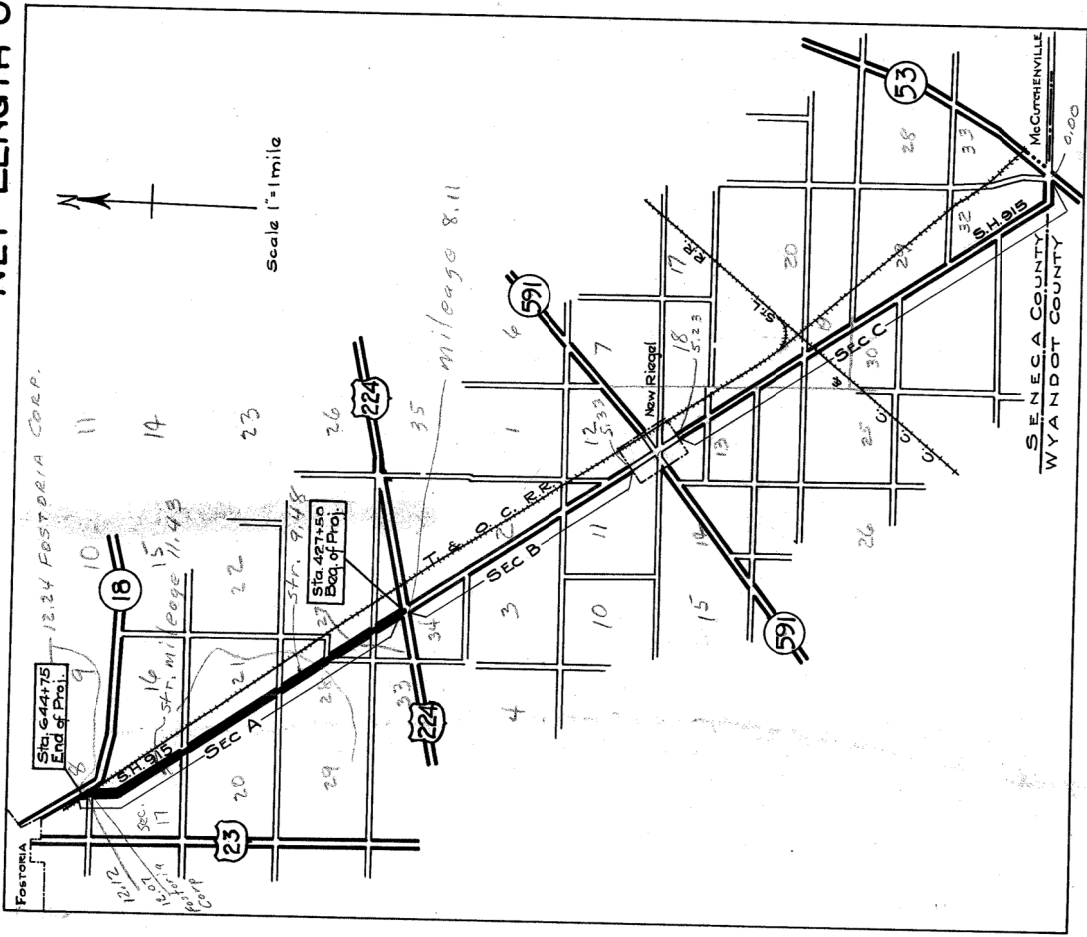


STATE OF OHIO

DEPARTMENT OF HIGHWAYS
 W.P.A. STATE WIDE HIGHWAY PROJECTS
 STATE WIDE OFFICIAL PROJECT O.P. 665-42-1-119

SENECA COUNTY
 S.H. 915 SEC. A
 HIGHWAY AUTHORIZATION No 2-74-3
 W.P.A. Job No 1-74-101

SENECA COUNTY
 SEC. A ROUTE 587
 NET LENGTH OF PROJECT 4.114 MILES



PIPE CULVERTS

STATION	EXISTING	WORK REQUIRED	PIPE TO BE REPLACED Sq. Yds.	STD. C.B. 1-2 2-2	PIPE FOR ROADWAY CULVERTS 1E 15 18 36	STORM SEWER PIPE 8 10 12	
427+85	26" 15" V.S.P.	Replace	5		46		
460+36	36" T File	- new C.B. on R/W	4	1	46		
482+85	32" 6" Casing Pipe - P.C.B.		4	2	46		
486+67	30" 6" C.I.P. P.C.B.		4	2	46		
507+05	22" 6" C.I.P. 6" 16" Conn. (P)	- new C.B. on Lt.	4	1	46	15	
516+98	24" 6" C.I.P.	- connect pres. file	4	2	46	40	
532+51	3" Tile - P.C.B.		4	2	46	30	
538+88	8" C.I.P. & Sewer Pipe		4	2	46		
541+58	4" Tile		4	2	46		
549+52	12" V.S.P. - P.C.B.		4	2	46		
551+52	18" 6" C.I.P.	- extend	4	2	46		
551+52	18" 6" C.I.P.	- replace - connect pres. file	4	2	46		
551+43	4" Tile		4	2	46		
TOTALS							
448+40 Lt.	C.B.		49	19	16	10	
497+54 R/W	C.B.			1	46		
525+74 Lt.	C.B.			1	46		
590+36 R/W	C.B.			1	46		
637+77 R/W	C.B.			1	46		
640+07 R/W	C.B.			1	46		
TOTALS							
							20
							20
							50
							140

ROADWAY DRAINAGE

Quantity	Unit	Material
24	Unit	Std. 1-2 Carb. Basins
2	Unit	Std. 2
414	Lin. Ft.	12" Pipe for Roadway Culverts
92	"	15"
46	"	18"
16	"	36"
250	"	8" Plain Concrete or Vit. Sewer Pipe
10	"	12"
15	"	12" Pipe for Drives
360	"	8-10" Culvert pipe relaid in private drives
100	"	No. 46 Limestone Aggregate for drives & mail box approaches
125	Tons	Stone drains (47 tons No. 46, 10 tons No. 46)
1200	Lin. Ft.	Right of Way manure pits to be set
90	Sq. Yds.	5" W.B. Macadam Base widening point replacement
17667	Sq. Yds.	3302 tons of 3/4" aggregate
15258	"	5" W.B. Macadam Base widening point replacement
4344E	"	2850 Top M. 3.3 No. 12 - 1335 Top M. 12/16.7
14889	Cu. Yds.	Bit. Sur. Treatment - 15205 gals. Prime Coat, 17377 gals. Sur. Treat.
200	Tons	Excavation - Roadway
19300	Sq. Yd.	7" Stone for backfill (cross over)
159	Cu. Yds.	Removal of old 6" and 8" pipe
935	"	Removal of old 12" pipe
32000	Lf.	Removal of fence (W.P.)
152838	Sq. Ft.	Removal of trees & stumps

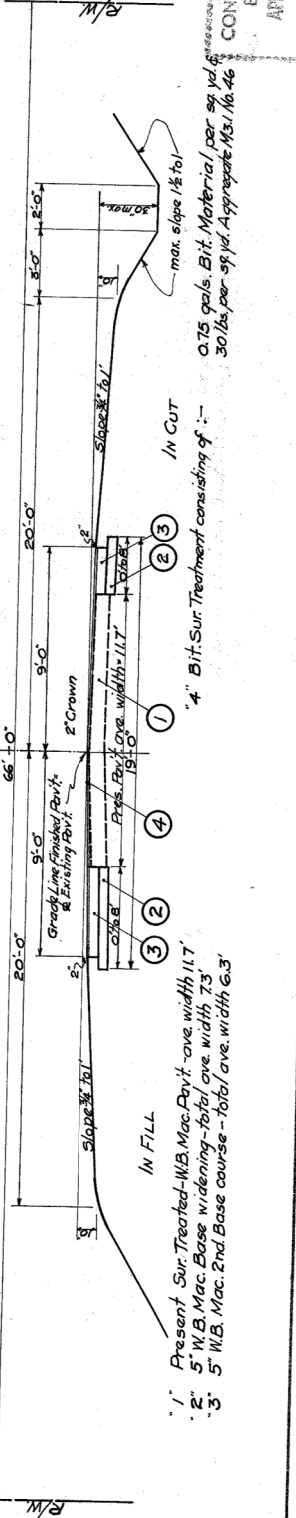
SUMMARY OF QUANTITIES

Quantity	Unit	Material
24	Unit	Std. 1-2 Carb. Basins
2	Unit	Std. 2
414	Lin. Ft.	12" Pipe for Roadway Culverts
92	"	15"
46	"	18"
16	"	36"
250	"	8" Plain Concrete or Vit. Sewer Pipe
10	"	12"
15	"	12" Pipe for Drives
360	"	8-10" Culvert pipe relaid in private drives
100	"	No. 46 Limestone Aggregate for drives & mail box approaches
125	Tons	Stone drains (47 tons No. 46, 10 tons No. 46)
1200	Lin. Ft.	Right of Way manure pits to be set
90	Sq. Yds.	5" W.B. Macadam Base widening point replacement
17667	Sq. Yds.	3302 tons of 3/4" aggregate
15258	"	5" W.B. Macadam Base widening point replacement
4344E	"	2850 Top M. 3.3 No. 12 - 1335 Top M. 12/16.7
14889	Cu. Yds.	Bit. Sur. Treatment - 15205 gals. Prime Coat, 17377 gals. Sur. Treat.
200	Tons	Excavation - Roadway
19300	Sq. Yd.	7" Stone for backfill (cross over)
159	Cu. Yds.	Removal of old 6" and 8" pipe
935	"	Removal of old 12" pipe
32000	Lf.	Removal of fence (W.P.)
152838	Sq. Ft.	Removal of trees & stumps

The Right of Way necessary for this improvement will be provided by the State of Ohio.
 I hereby approve these plans and declare that provision for maintenance and safety of traffic will be made as hereinafter described:-
 The highway will be maintained on the highway with sufficient signs, lights & flagmen to insure safety.

Approved _____ Resident Division Deputy Director
 Date 4/13/39
 Approved _____ Chief Engineer - Bureau of Maintenance
 Date 4/13/39
 Approved _____ Chief Engineer - Bureau of Bridges
 Date 4/13/39
 Approved _____ First Asst. Director - Chief Engineer
 Date 4/13/39
 Approved _____ Director of Highways
 Date 4/13/39

TYPICAL SECTION



Supplemental Prints of
 Standard Construction Dwg.
 I-8.C.B. *12-2-2
 S.B.35
 B.D.35
 B-26-35

CONSTRUCTION
 BUREAU
 APR 30 1939
 GROUND PHOTOGRAPH