

O.D.O.T. DISTRICT 2 SURVEY OFFICE (USE ONLY)

PERSONNEL

REFERENCE NO. 0

SHEET 1 OF 30

NOTES FINGER

DATE 5/24/11

ROUTE SR 587

H.C. MOSE

WEATHER OVERCAST

COUNTY SENECA

R.C. HARBAUGH

TEMP. 65°

TOWNSHIP SENECA

DWG BY NIESE PID PAVE TRAIN

SECTION 33

T 1 N R 14 E

TYPE MONUMENT MAG/WASHER

ON SURFACE - ~~BELOW~~ ON

OFFSET 5.0' ~~LT~~ : RT

5.3' TO RT EDGE PAVEMENT

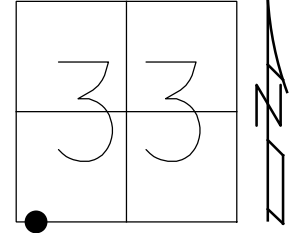
STATION: 0+00

HORZ. DATUM: _____

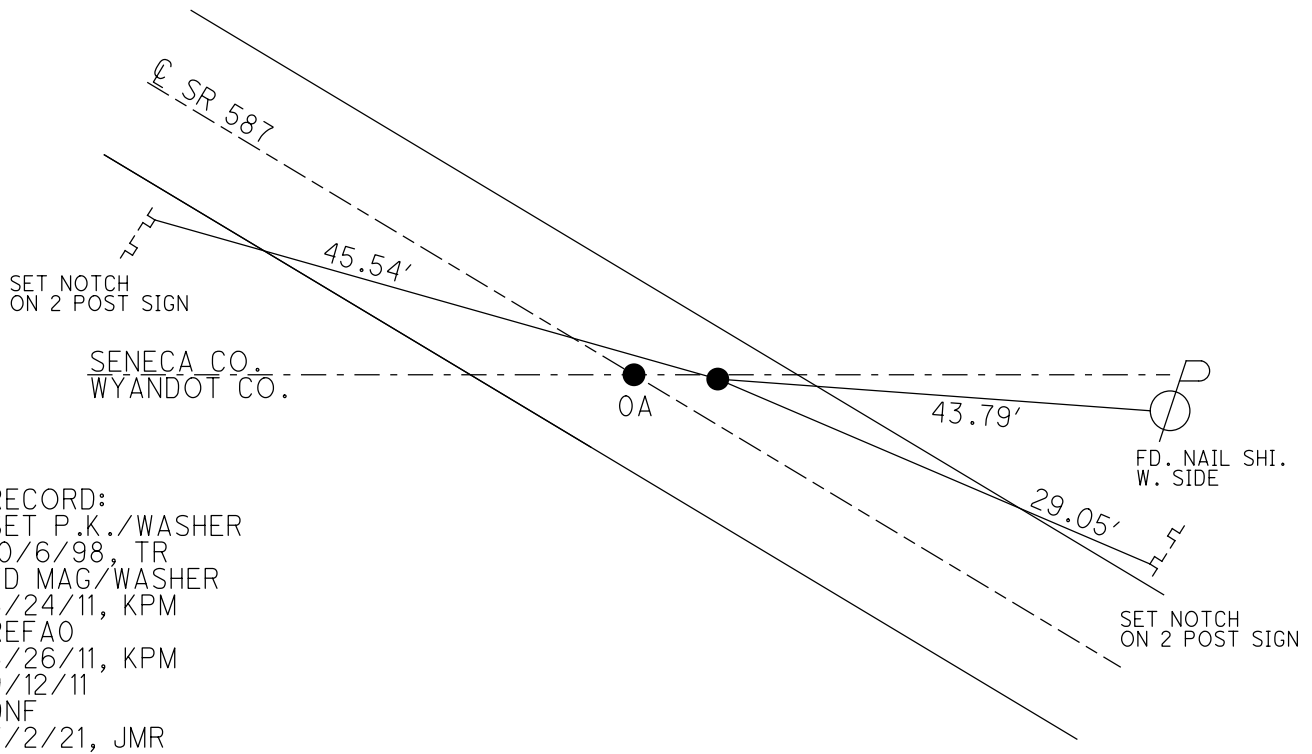
GEOID: _____

GRID: NORTHING: 484046.557

EASTING: 1757347.233



DIST. BETWEEN
0-0A=9.82'



RECORD:
SET P.K./WASHER
10/6/98, TR
FD MAG/WASHER
5/24/11, KPM
REFAO
5/26/11, KPM
9/12/11
DNF
7/2/21, JMR

O.D.O.T. DISTRICT 2 SURVEY OFFICE (USE ONLY)

PERSONNEL

REFERENCE NO. 0 A

SHEET 2 OF 30

NOTES FINGER

DATE 5/24/11

ROUTE SR 587

H.C. MOSE

WEATHER OVERCAST

COUNTY SENECA

R.C. HARBAUGH

TEMP. 65°

TOWNSHIP SENECA

SECTION 33

DWG BY NIESE

PID PAVE TRAIN

T 1 N R 14 E

TYPE MONUMENT MAG/WASHER

ON SURFACE - ~~BELOW~~ ON

OFFSET 0 PAVEMENT ON LT : RT

10.3' TO RT EDGE PAVEMENT

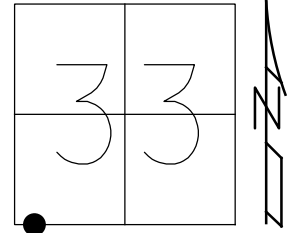
STATION: 0+00

HORZ. DATUM: _____

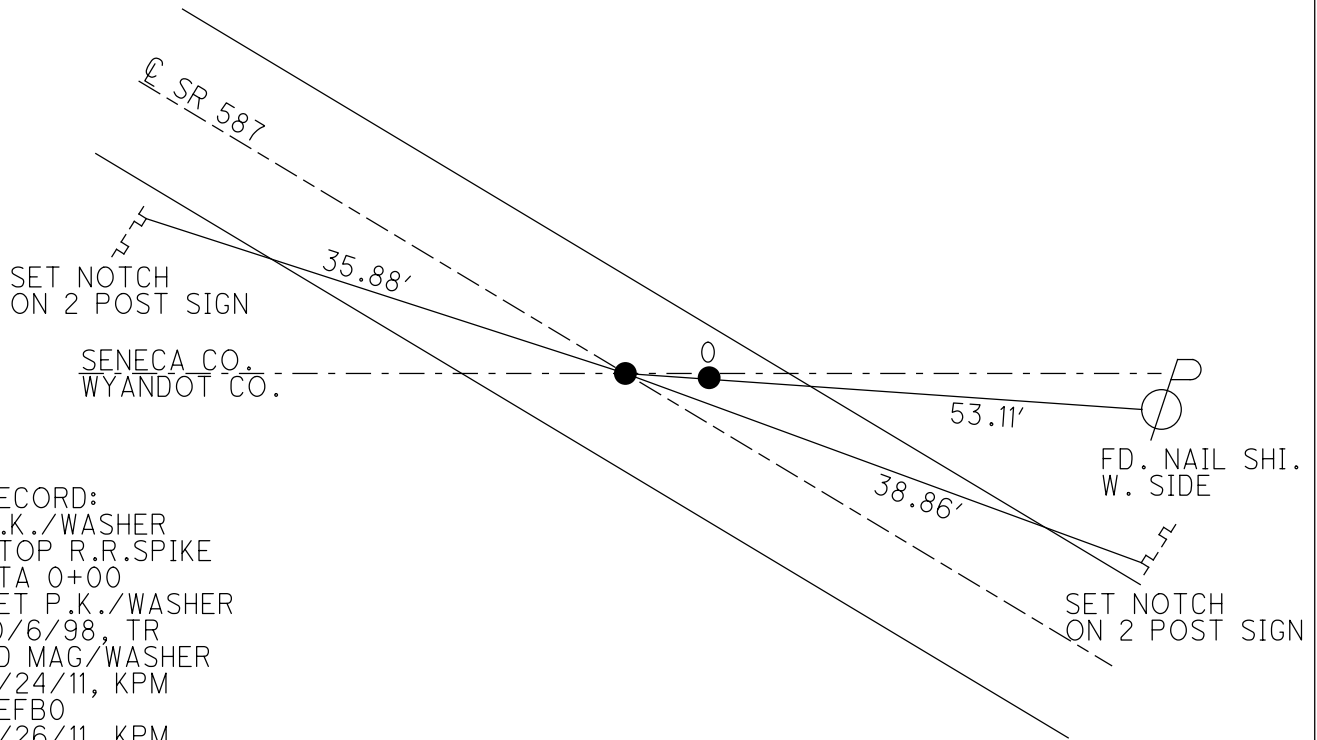
GEOID: _____

GRID: NORTHING: 484046.455

EASTING: 1757337.408



DIST. BETWEEN
0-0A=9.82'



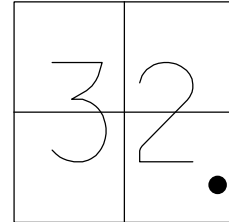
RECORD:
P.K./WASHER
ATOP R.R.SPIKE
STA 0+00
SET P.K./WASHER
10/6/98, TR
FD MAG/WASHER
5/24/11, KPM
REFBO
5/26/11, KPM
9/12/11
7/2/21, JMR

O.D.O.T. DISTRICT 2 SURVEY OFFICE (USE ONLY)

PERSONNEL _____ REFERENCE NO. 1 SHEET 3 OF 30

NOTES FINGER _____ DATE 5-24-11 ROUTE SR 587
 H.C. MOSER _____ WEATHER OVERCAST COUNTY SENECA
 R.C. HARBAUGH _____ TEMP. 65° TOWNSHIP SENECA
 _____ SECTION 32
 _____ T 1 N R 14 E

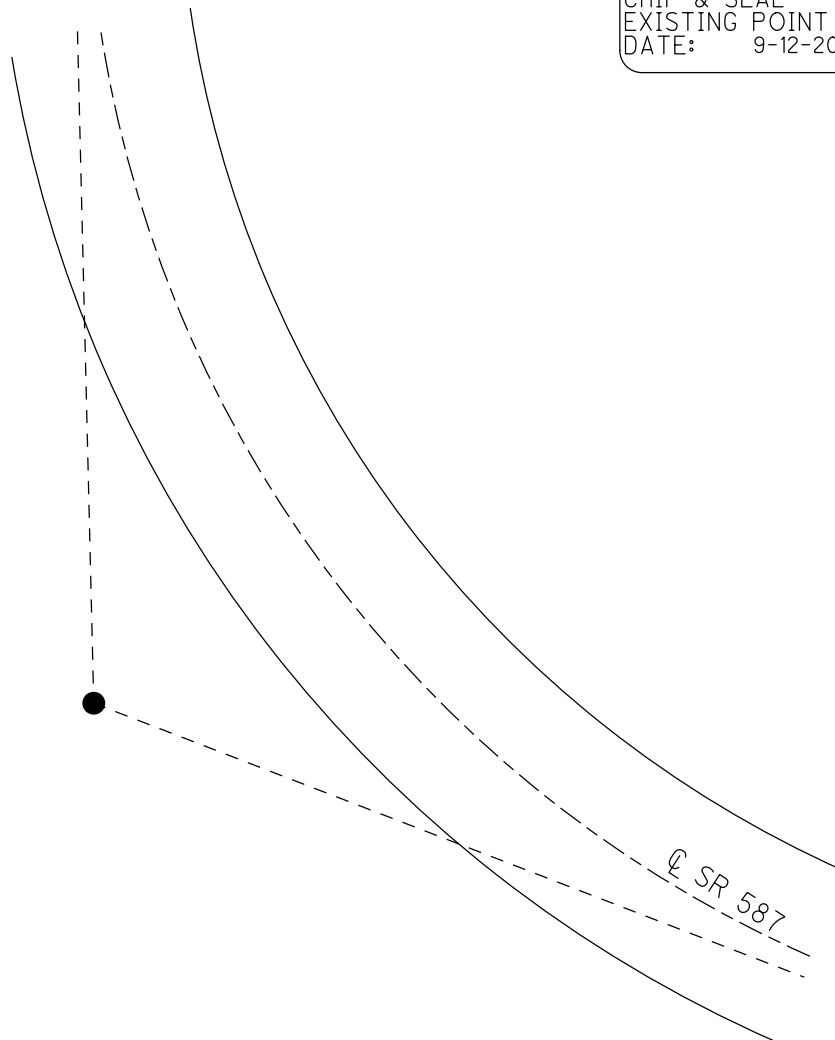
TYPE MONUMENT D.N.F.
 ON SURFACE - BELOW _____
 LEFT - ☉ PAV'T - RIGHT _____
 _____ TO _____ EDGE PAVEMENT
 S.L.M. 4+13.68
 GRID: NORTHING: _____ EASTING: _____



DID NOT FIND
 PI STA. 4+13.68
 NO TIES
 5-4-98

PREVENTATIVE MAINTENANCE
 CHIP & SEAL
 EXISTING POINT UNCOVERED
 DATE: 9-12-2011

DID NOT FIND
 5-24-11
 KPM



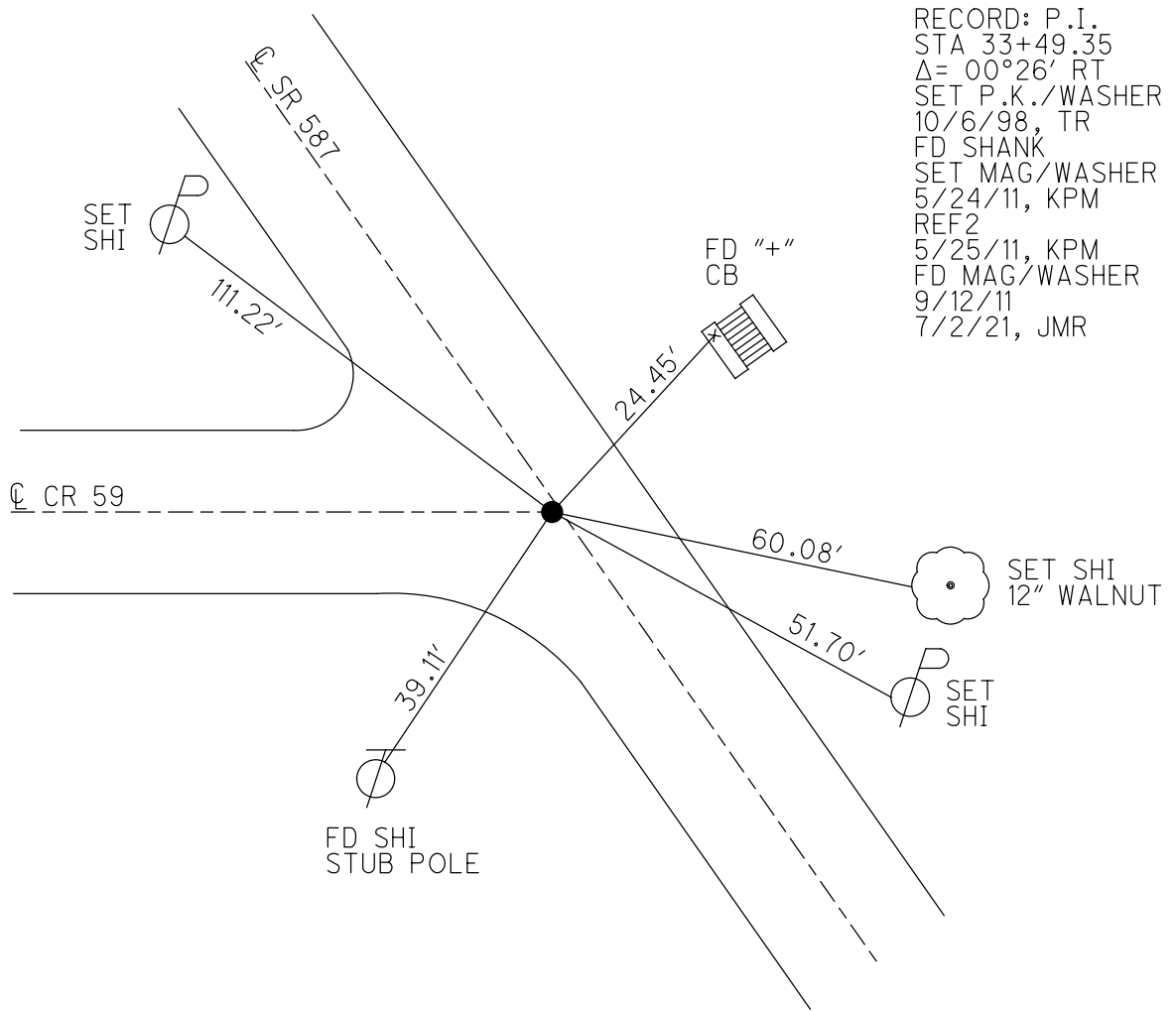
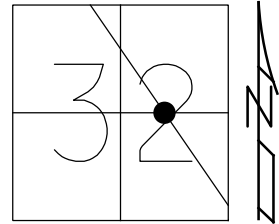
☉ SR 587

O.D.O.T. DISTRICT 2 SURVEY OFFICE (USE ONLY)

PERSONNEL _____ REFERENCE NO. 2 SHEET 4 OF 30
 NOTES FINGER DATE 5/24/11 ROUTE SR 587
 H.C. MOSER WEATHER OVERCAST COUNTY SENECA
 R.C. HARBAUGH TEMP. 65° TOWNSHIP SENECA
 DWG BY NIESE PID PAVE TRAIN SECTION 32
 T 1 N R 14 E

TYPE MONUMENT P.K.SHANK
 ON SURFACE - ~~BELOW~~ ON _____
 OFFSET \odot PAVEMENT 1.0' LT : ~~RT~~
11.7' TO RT EDGE PAVEMENT
 STATION: 33+32.84

HORZ.DATUM: NAD83 GEOID: 2009
 GRID: NORTHING: 486683.369 EASTING: 1755336.494

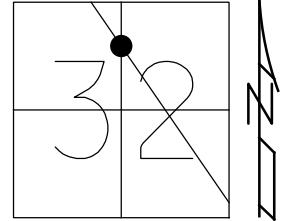


RECORD: P.I.
 STA 33+49.35
 $\Delta = 00^{\circ}26'$ RT
 SET P.K./WASHER
 10/6/98, TR
 FD SHANK
 SET MAG/WASHER
 5/24/11, KPM
 REF2
 5/25/11, KPM
 FD MAG/WASHER
 9/12/11
 7/2/21, JMR

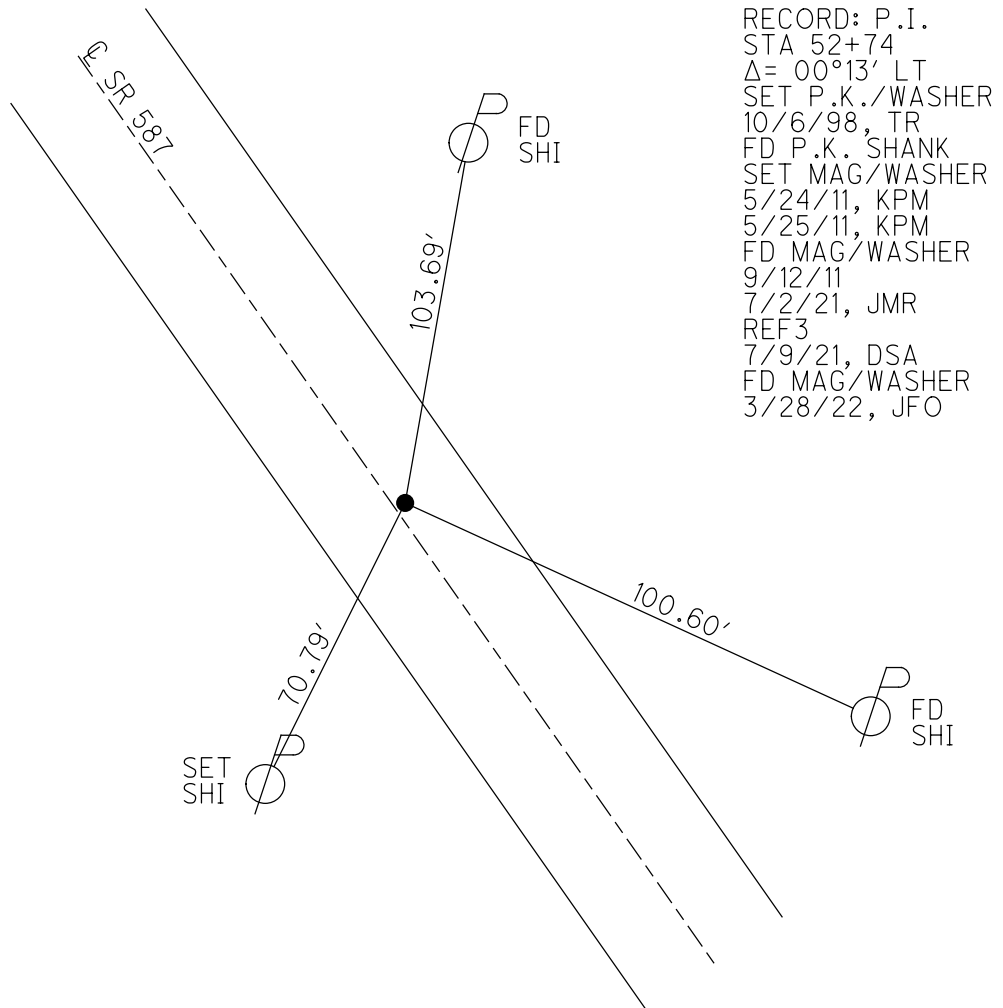
O.D.O.T. DISTRICT 2 SURVEY OFFICE (USE ONLY)

PERSONNEL _____ REFERENCE NO. 3 SHEET 5 OF 30
 NOTES FINGER DATE 5/24/11 ROUTE SR 587
 H.C. MOSER WEATHER OVERCAST COUNTY SENECA
 R.C. HARRBAUGH TEMP. 65° TOWNSHIP SENECA
 DWG BY NIESE PID PAVE TRAIN SECTION 32
 T 1 N R 14 E

TYPE MONUMENT P.K. SHANK
 ON SURFACE - ~~BELOW~~ ON
 OFFSET Q PAVEMENT 1.0' ~~LT~~ : RT
10.3' TO RT EDGE PAVEMENT
 STATION: 52+74



HORZ. DATUM: NAD83(2011) GEOID: NAVD88 2018
 GRID: NORTHING: 488282.810 EASTING: 1754265.844



RECORD: P.I.
 STA 52+74
 $\Delta = 00^\circ 13' \text{ LT}$
 SET P.K./WASHER
 10/6/98, TR
 FD P.K. SHANK
 SET MAG/WASHER
 5/24/11, KPM
 5/25/11, KPM
 FD MAG/WASHER
 9/12/11
 7/2/21, JMR
 REF3
 7/9/21, DSA
 FD MAG/WASHER
 3/28/22, JFO

O.D.O.T. DISTRICT 2 SURVEY OFFICE (USE ONLY)

PERSONNEL

REFERENCE NO. 4

SHEET 6 OF 30

NOTES FINGER

DATE 5/24/11

ROUTE SR 587

H.C. MOSER

WEATHER OVERCAST

COUNTY SENECA

R.C. HARBAUGH

TEMP. 65°

TOWNSHIP SENECA

SECTION 32

DWG BY NIESE

PID PAVE TRAIN

T 1 N R 14 E

TYPE MONUMENT P.K.

ON SURFACE - ~~BELOW~~ ON

OFFSET \varnothing PAVEMENT ON LT : RT

10.5' TO LT EDGE PAVEMENT

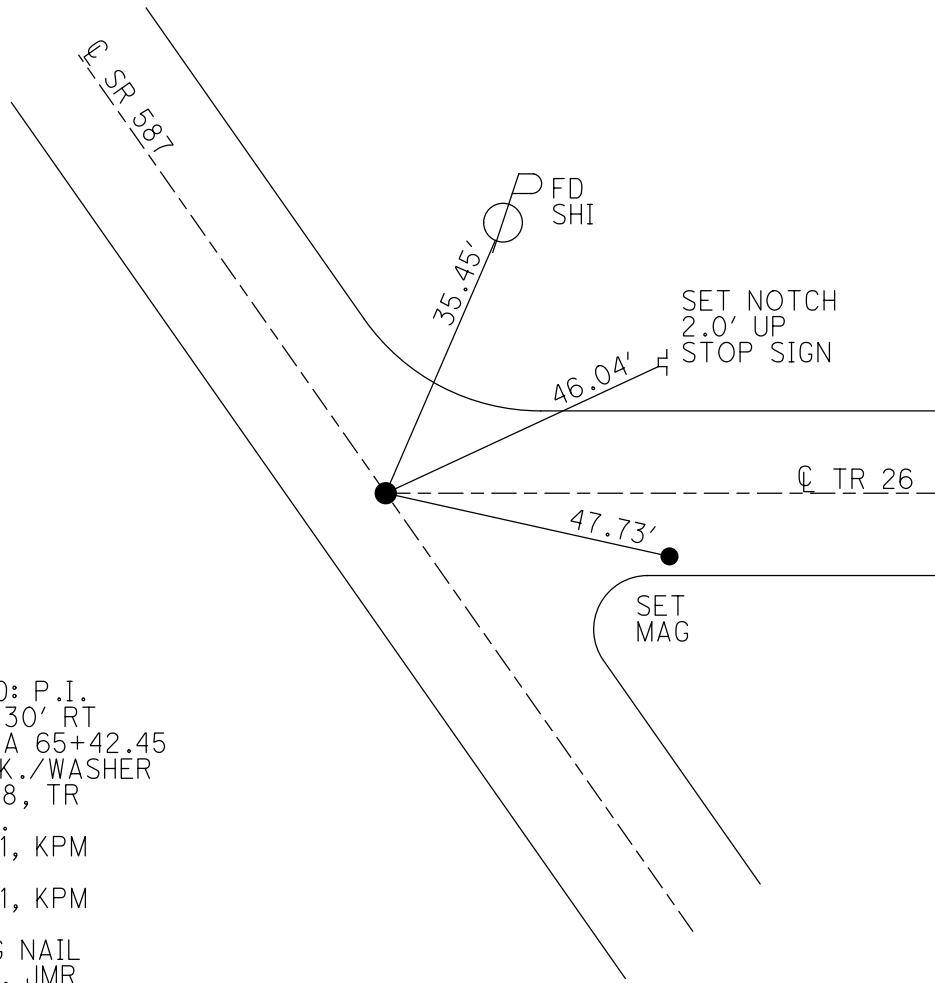
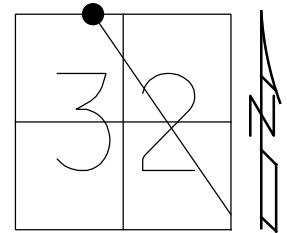
STATION: 65+48

HORZ.DATUM: NAD83

GEOID: 2009

GRID: NORTHING: 489332.837

EASTING: 1753553.686



RECORD: P.I.
 $\Delta = 00^{\circ}30'$ RT
 REC STA 65+42.45
 SET P.K./WASHER
 10/6/98, TR
 FD P.K.
 2/24/11, KPM
 REF4
 5/25/11, KPM
 9/12/11
 FD MAG NAIL
 7/2/21, JMR

O.D.O.T. DISTRICT 2 SURVEY OFFICE (USE ONLY)

PERSONNEL _____

REFERENCE NO. 5

SHEET 7 OF 30

NOTES CANTERBURY

DATE 5/4/98

ROUTE SR 587

H.C. ROUSOS

WEATHER OVERCAST

COUNTY SENECA

R.C. LOEHRKE

TEMP. 63°

TOWNSHIP SENECA

DWG BY NIESE

PID PAVE TRAIN

SECTION 29

T 1 N R 14 E

TYPE MONUMENT P.K./WASHER TOP R.R.SPIKE

ON SURFACE - ~~BELOW~~ ON

OFFSET ☉ PAVEMENT ON LT : RT

11.2' TO LT EDGE PAVEMENT

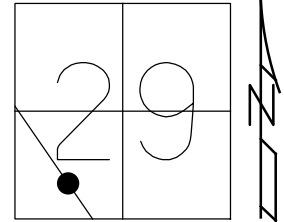
STATION: 76+38.95

HORZ.DATUM: _____

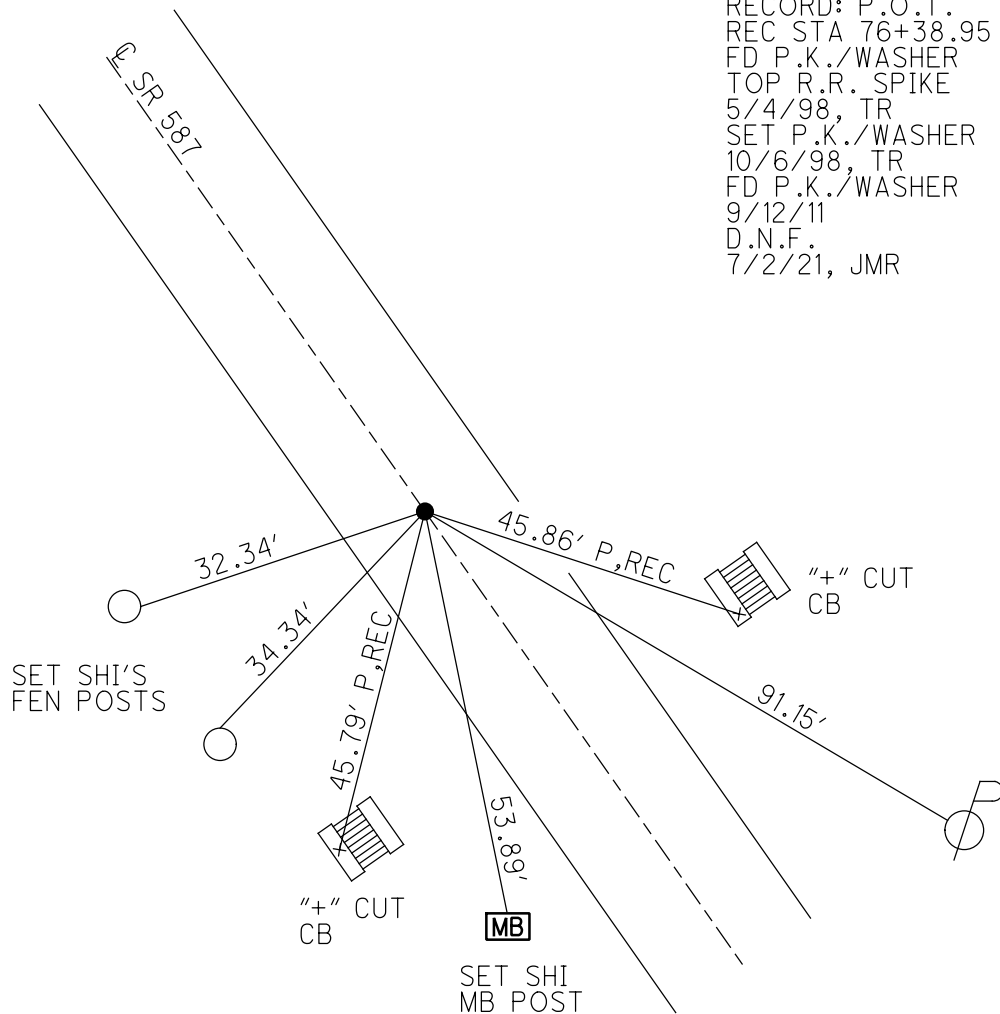
GEOID: _____

GRID: NORTHING: _____

EASTING: _____



RECORD: P.O.T.
 REC STA 76+38.95
 FD P.K./WASHER
 TOP R.R. SPIKE
 5/4/98, TR
 SET P.K./WASHER
 10/6/98, TR
 FD P.K./WASHER
 9/12/11
 D.N.F.
 7/2/21, JMR



O.D.O.T. DISTRICT 2 SURVEY OFFICE (USE ONLY)

PERSONNEL _____ REFERENCE NO. 6 SHEET 8 OF 30

NOTES MILLER DATE 12/28/23 ROUTE SR 587

H.C. RHOADES WEATHER OVERCAST COUNTY SENECA

R.C. MILLER TEMP. 46° TOWNSHIP SENECA

DWG BY RHOADES PID PAVING TRAIN SECTION 29

T 1 N R 14 E

TYPE MONUMENT P.K.NAIL

ON SURFACE - ~~BELOW~~ ON

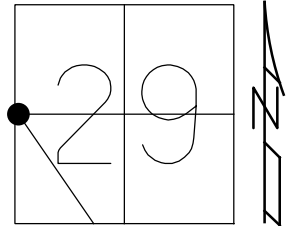
OFFSET ☉ PAVEMENT ON LT : RT

10.5' TO RT EDGE PAVEMENT

STATION: 96+94.70

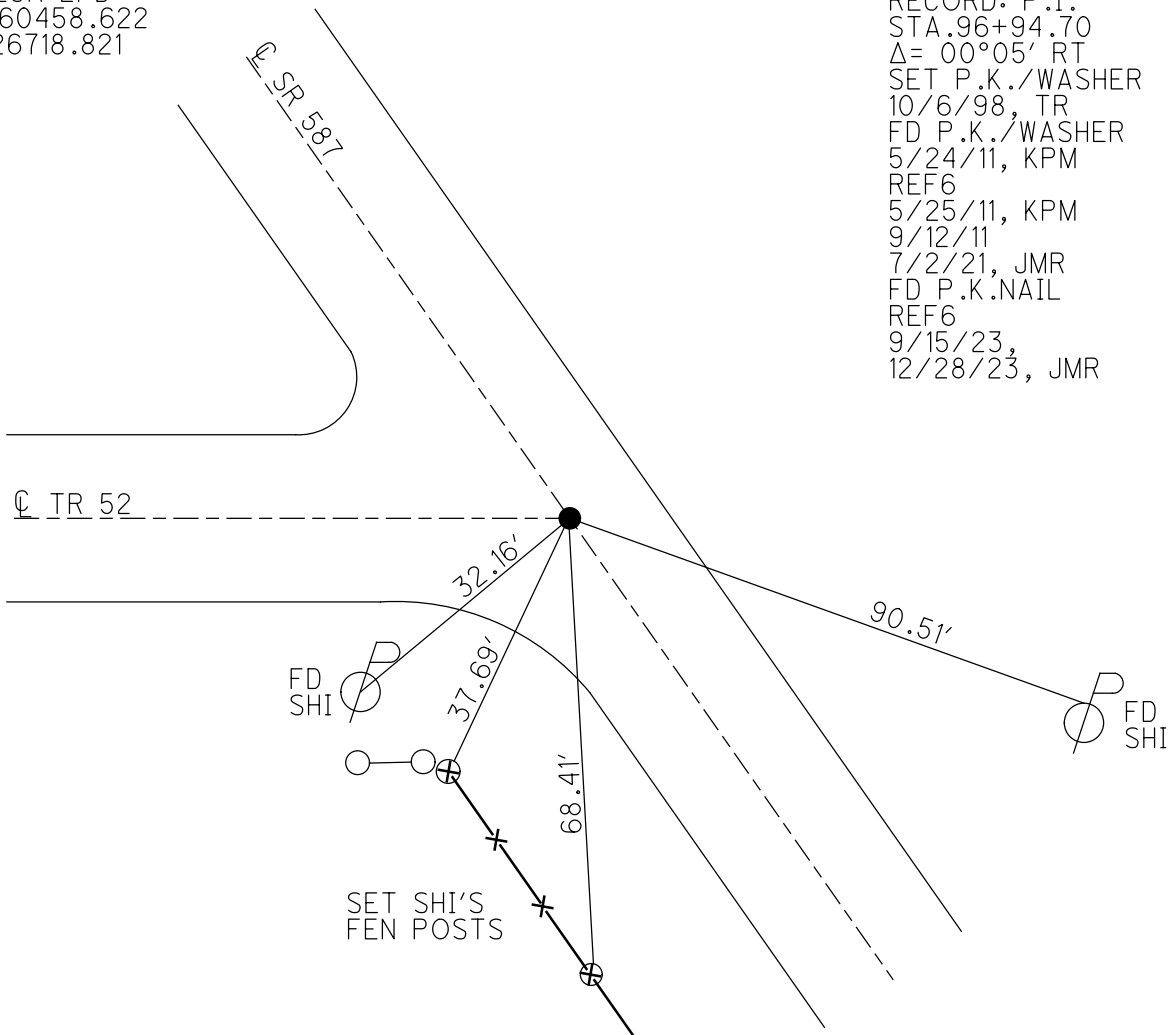
HORIZ.DATUM: NAD83 2011 GEOID: NAVD88 2018

GRID: NORTHING: 491958.686 EASTING: 1751811.656



SENECA LPD:
N: 260458.622
E: 126718.821

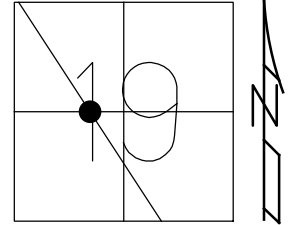
RECORD: P.I.
STA. 96+94.70
 $\Delta = 00^{\circ}05' RT$
SET P.K./WASHER
10/6/98, TR
FD P.K./WASHER
5/24/11, KPM
REF6
5/25/11, KPM
9/12/11
7/2/21, JMR
FD P.K.NAIL
REF6
9/15/23,
12/28/23, JMR



O.D.O.T. DISTRICT 2 SURVEY OFFICE (USE ONLY)

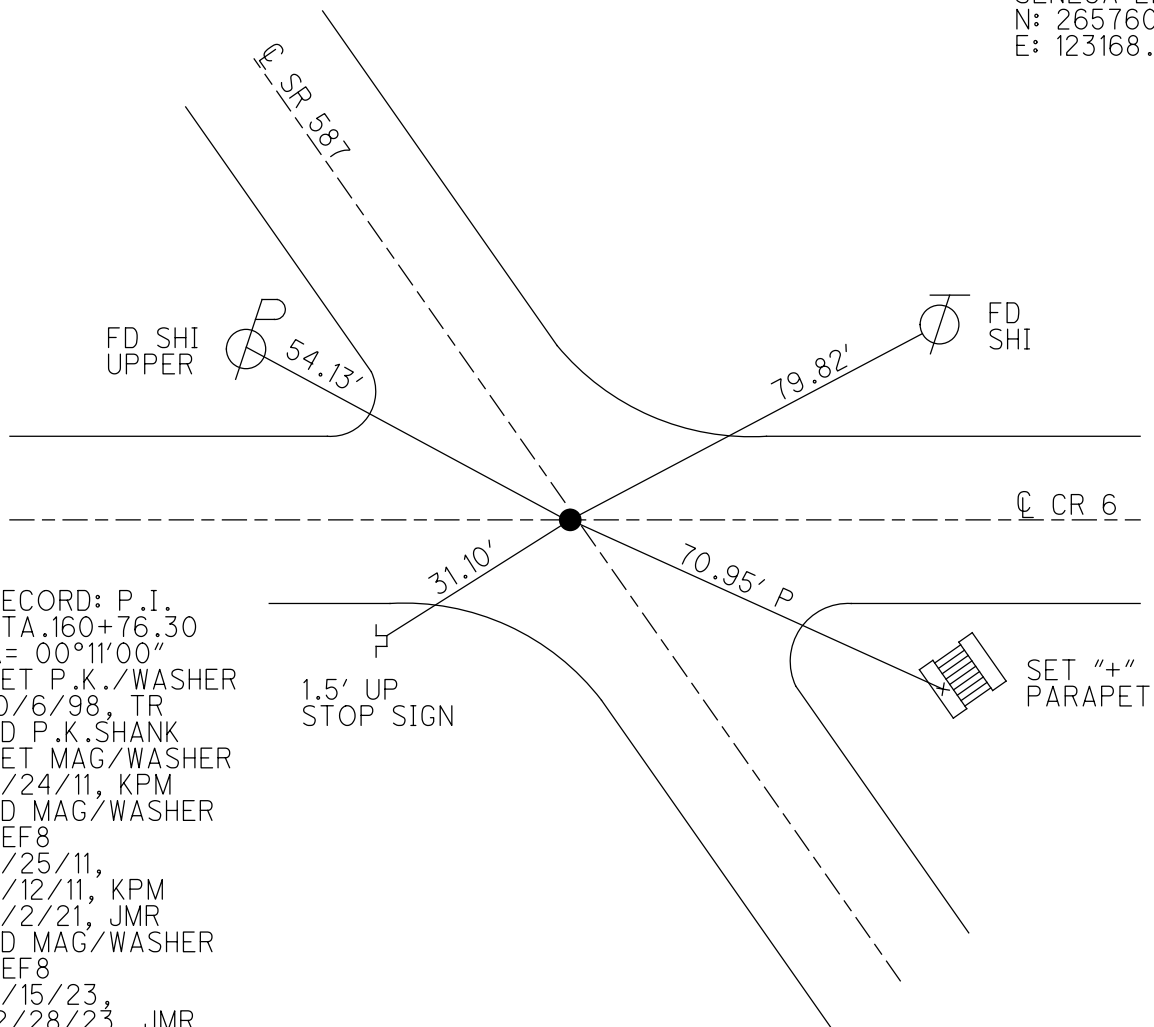
PERSONNEL _____ REFERENCE NO. 8 SHEET 10 OF 30
 NOTES MILLER DATE 12/28/23 ROUTE SR 587
 H.C. RHOADES WEATHER OVERCAST COUNTY SENECA
 R.C. MILLER TEMP. 46° TOWNSHIP SENECA
 DWG BY RHOADES PID PAVING TRAIN SECTION 19
 T 1 N R 14 E

TYPE MONUMENT MAG/WASHER
 ON SURFACE - ~~BELOW~~ ON
 OFFSET C PAVEMENT 0.6' LT : ~~RT~~
10.2' TO LT EDGE PAVEMENT
 STATION: 160+76.30



HORZ. DATUM: NAD83 2011 GEOID: NAVD88 2018
 GRID: NORTHING: 497285.982 EASTING: 1748300.992

SENECA LPD:
 N: 265760.142
 E: 123168.225



RECORD: P.I.
 STA. 160+76.30
 $\Delta = 00^\circ 11' 00''$
 SET P.K./WASHER
 10/6/98, TR
 FD P.K. SHANK
 SET MAG/WASHER
 5/24/11, KPM
 FD MAG/WASHER
 REF8
 5/25/11,
 9/12/11, KPM
 7/2/21, JMR
 FD MAG/WASHER
 REF8
 9/15/23,
 12/28/23, JMR

O.D.O.T. DISTRICT 2 SURVEY OFFICE (USE ONLY)

PERSONNEL

REFERENCE NO. 9

SHEET 11 OF 30

NOTES FINGER

DATE 5/24/11

ROUTE SR 587

H.C. MOSER

WEATHER OVERCAST

COUNTY SENECA

R.C. HARBAUGH

TEMP. 65°

TOWNSHIP SENECA

SECTION 19

DWG BY NIESE PID PAVE TRAIN

T 1 N R 14 E

TYPE MONUMENT P.K./WASHER

ON SURFACE - ~~BELOW~~ ON

OFFSET 9.8' TO RT EDGE PAVEMENT 1.0' RT

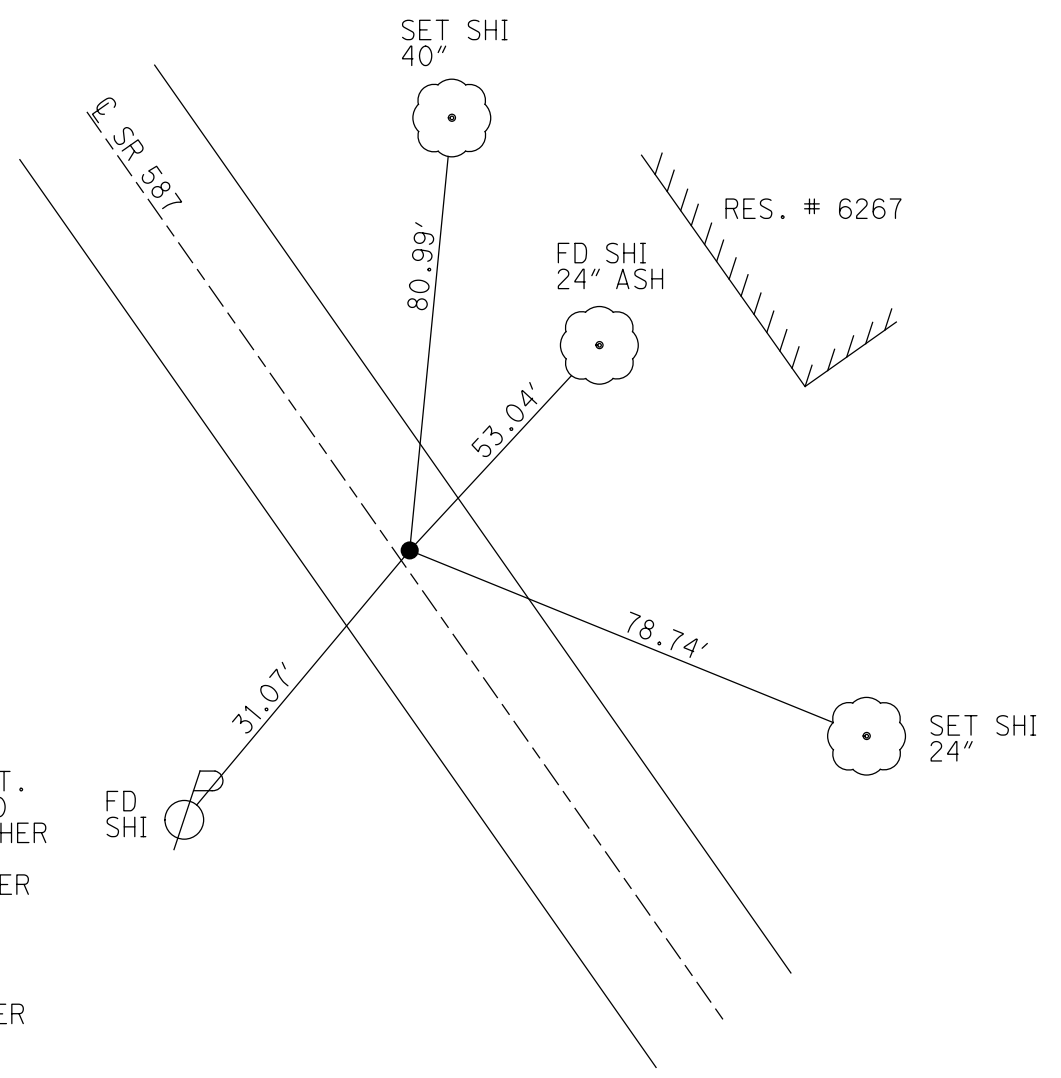
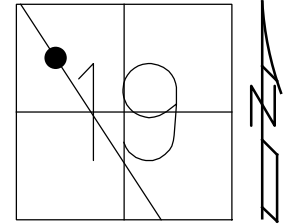
STATION: 176+58.50

HORIZ.DATUM: NAD83

GEOID: 2009

GRID: NORTHING: 498610.083

EASTING: 1747437.426



RECORD: P.O.T.
 STA 176+57.50
 SET P.K./WASHER
 10/6/98, TR
 FD P.K./WASHER
 5/24/11, KPM
 REF9
 5/25/11, KPM
 9/12/11
 FD MAG/WASHER
 7/2/21, JMR

O.D.O.T. DISTRICT 2 SURVEY OFFICE (USE ONLY)

PERSONNEL

REFERENCE NO. 10

SHEET 12 OF 30

NOTES FINGER

DATE 5/24/11

ROUTE SR 587

H.C. MOSE

WEATHER OVERCAST

COUNTY SENECA

R.C. HARBAUGH

TEMP. 65°

TOWNSHIP SENECA

SECTION 19

DWG BY NIESE PID PAVE TRAIN

T 1 N R 14 E

TYPE MONUMENT P.K./WASHER

ON SURFACE - ~~BELOW~~ ON

OFFSET 0.6' RT : RT

10.4' TO RT EDGE PAVEMENT

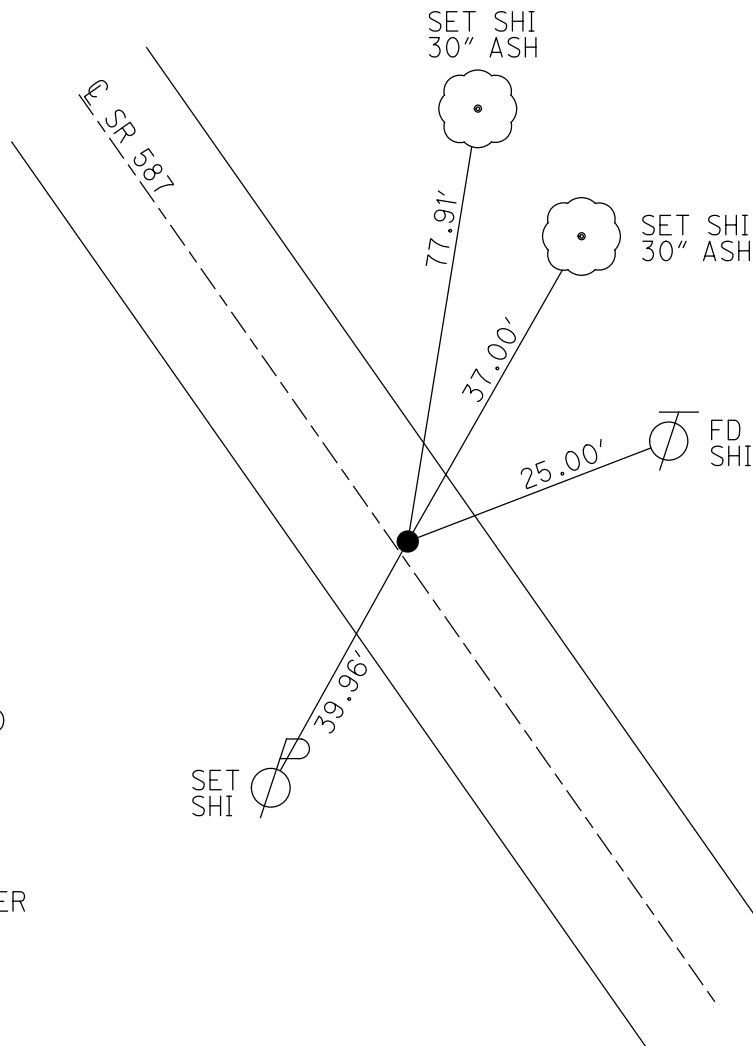
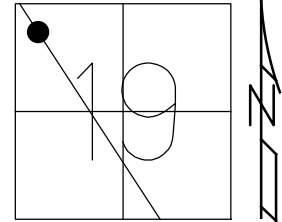
STATION: 184+16.11

HORZ.DATUM: NAD83

GEOID: 2009

GRID: NORTHING: 499299.424

EASTING: 1746987.559



RECORD: P.I.
 $\Delta = 00^{\circ}27'30''$
 STA 184+80.40
 P.K./WASHER
 10/6/98, TMR
 FD P.K. NAIL
 5/24/11, KPM
 5/25/11, KPM
 9/12/11
 FD P.K./WASHER
 REF10
 11/18/13, KPM
 7/1/15, JFO
 FD P.K. SHANK
 7/2/21, JMR

O.D.O.T. DISTRICT 2 SURVEY OFFICE (USE ONLY)

PERSONNEL

REFERENCE NO. 11

SHEET 13 OF 30

NOTES MILLER

DATE 12/28/23

ROUTE SR 587

H.C. RHOADES

WEATHER OVERCAST

COUNTY SENECA

R.C. MILLER

TEMP. 46°

TOWNSHIP SENECA

SECTION 18

DWG BY RHOADES PID PAVING TRAIN

T 1 N R 14 E

TYPE MONUMENT R.R.SPIKE

~~ON SURFACE~~ - BELOW 3 1/2"

OFFSET C PAVEMENT ON LT : RT

10.8' TO RT EDGE PAVEMENT

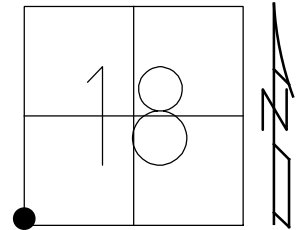
STATION: 194+15.19

HORZ.DATUM: NAD83 2011

GEOID: NAVD88 2018

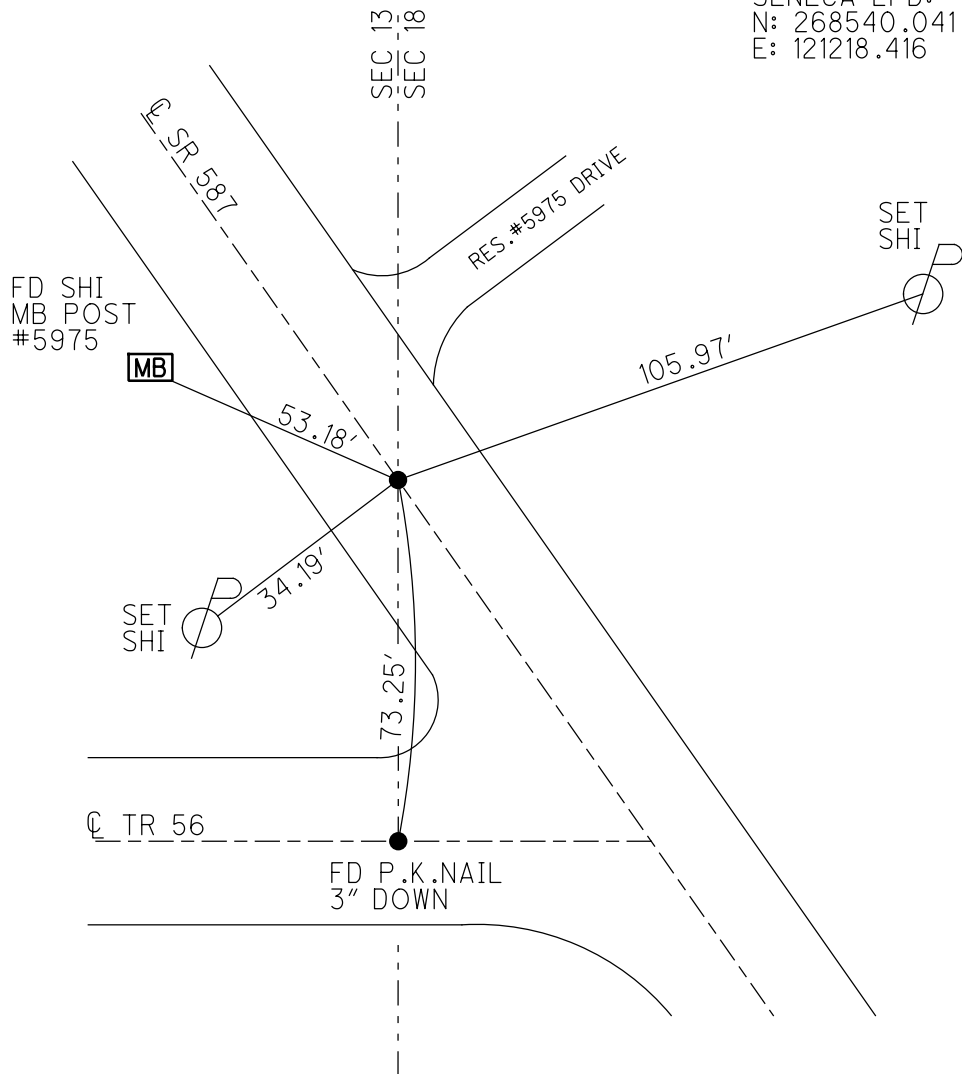
GRID: NORTHING: 500079.308

EASTING: 1746472.118



RECORD: P.O.T.
 STA 194+16.20
 SET P.K./WASHER
 10/6/98, TMR
 FD P.K./WASHER
 5/24/11, KPM
 REF11
 5/26/11, KPM
 9/12/11
 7/1/15, JFO
 COVERED
 7/2/21, JMR
 FD R.R.SPIKE
 3 1/2" DOWN
 REF11
 9/15/21.
 12/28/23, JMH

SENECA LPD:
 N: 268540.041
 E: 121218.416



O.D.O.T. DISTRICT 2 SURVEY OFFICE (USE ONLY)

PERSONNEL

REFERENCE NO. 12

SHEET 14 OF 30

NOTES FINGER

DATE 5/24/11

ROUTE SR 587

H.C. MOSE

WEATHER OVERCAST

COUNTY SENECA

R.C. HARBAUGH

TEMP. 65°

TOWNSHIP BIG SPRNGS

DWG BY NIESE

PID PAVE TRAIN

SECTION 13

T 1 N R 13 E

TYPE MONUMENT R.R. SPIKE

~~ON SURFACE~~ - BELOW 3"

OFFSET 0.4' ~~LT~~ : RT

10.5' TO RT EDGE PAVEMENT

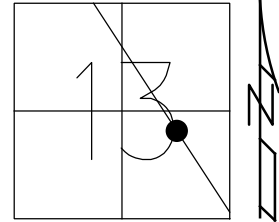
STATION: 218+03.11

HORZ.DATUM: NAD83

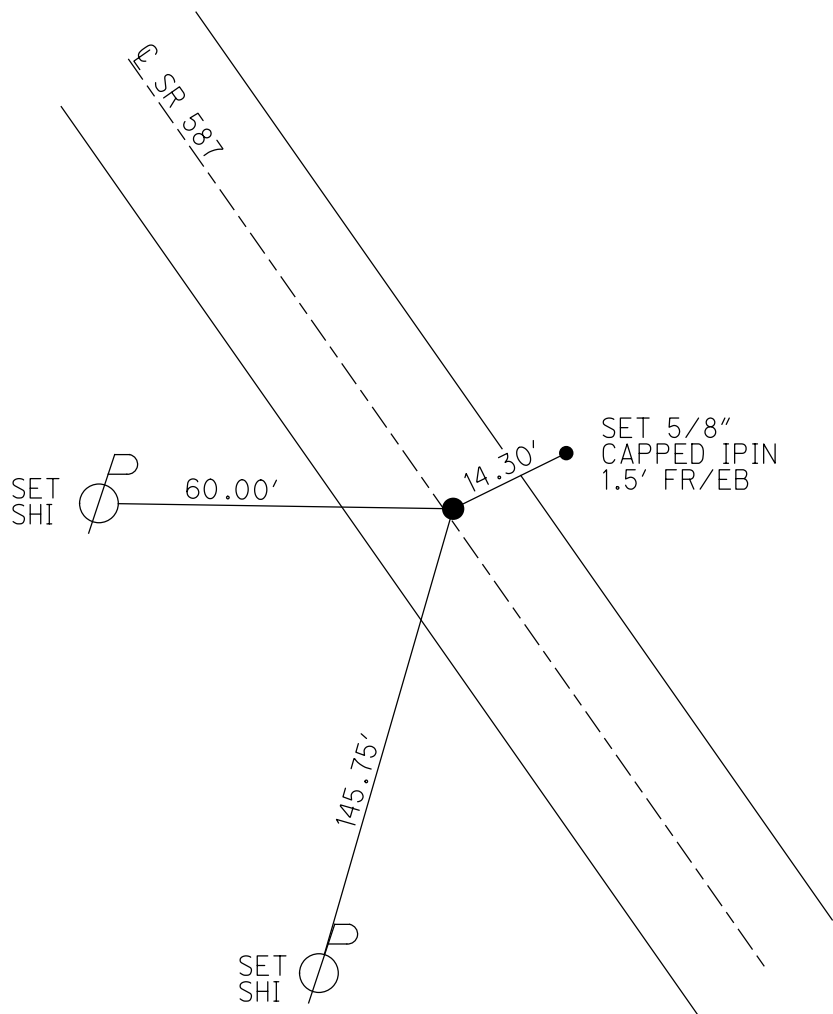
GEOID: 2009

GRID: NORTHING: 502071.085

EASTING: 1745154.993



RECORD: P.I.
 $\Delta = 00^{\circ}04' RT$
 STA 218+05.40
 SET P.K./WASHER
 10/6/98, TMR
 FD R.R.SPIKE
 W/ DIMPLE
 5/24/11, KPM
 REF12
 5/26/11, KPM
 9/12/11
 7/1/15, JFO
 FD R.R. SPIKE
 3 1/2" DOWN
 7/2/21, JMR



O.D.O.T. DISTRICT 2 SURVEY OFFICE (USE ONLY)

PERSONNEL

REFERENCE NO. 13

SHEET 15 OF 30

NOTES MILLER DATE 12/28/23
 H.C. RHOADES WEATHER RAIN
 R.C. MILLER TEMP. 46°

ROUTE SR 587
 COUNTY SENECA
 TOWNSHIP BIG SPRINGS
 SECTION 13

DWG BY RHOADES PID PAVING TRAINING

T 1 N R 13 E

TYPE MONUMENT MAG SHANK

ON SURFACE - ~~BELOW~~ ON

OFFSET ☉ PAVEMENT ON LT : RT

10.9' TO RT EDGE PAVEMENT

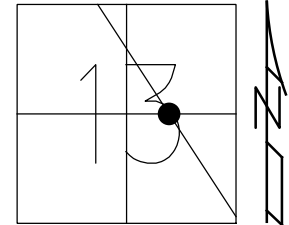
STATION: 225+04.29

HORIZ.DATUM: NAD83 2011

GEOID: NAVD88 2018

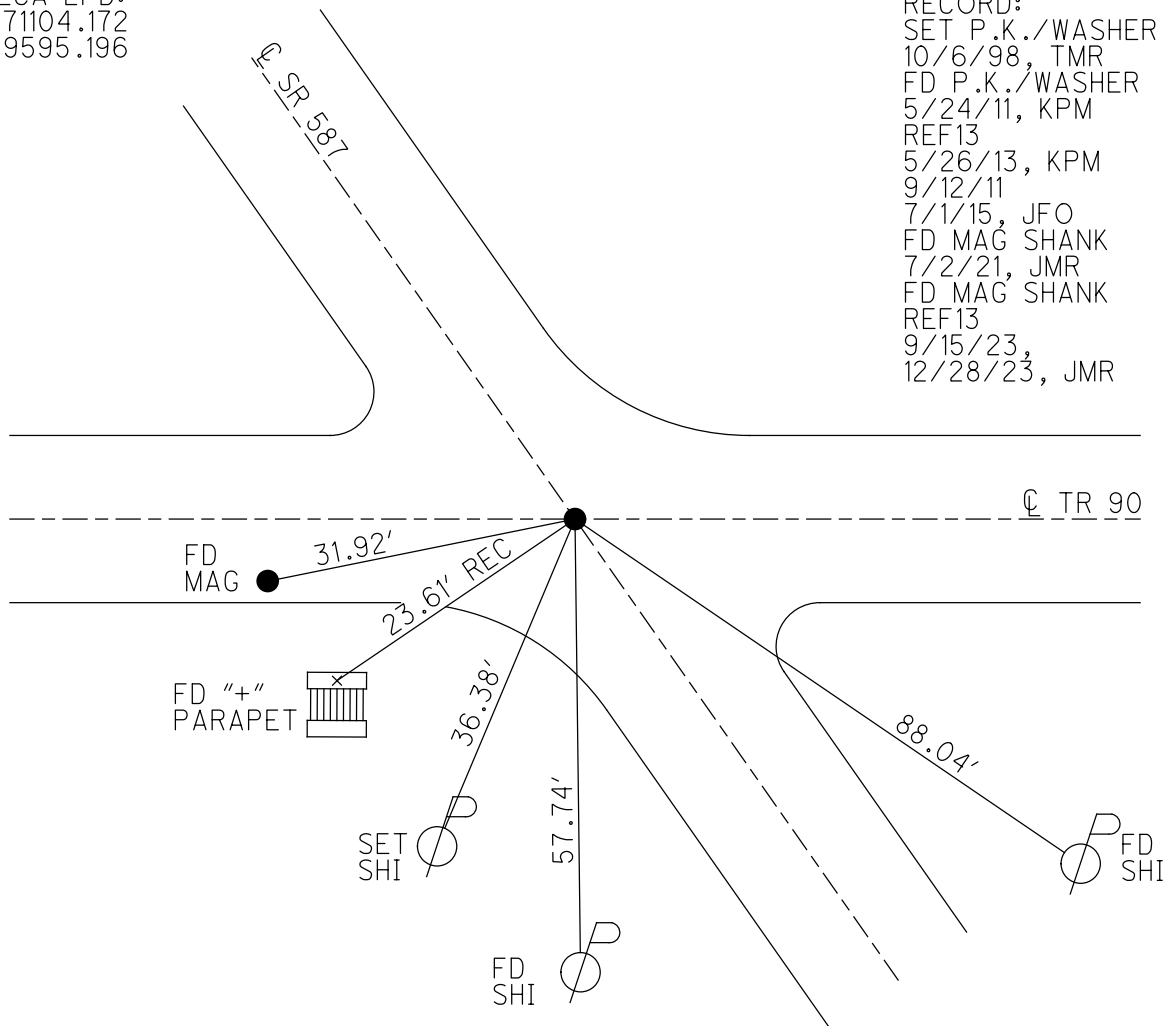
GRID: NORTHING: 502655.951

EASTING: 1744768.210



SENECA LPD:
 N: 271104.172
 E: 119595.196

RECORD:
 SET P.K./WASHER
 10/6/98, TMR
 FD P.K./WASHER
 5/24/11, KPM
 REF13
 5/26/13, KPM
 9/12/11
 7/1/15, JFO
 FD MAG SHANK
 7/2/21, JMR
 FD MAG SHANK
 REF13
 9/15/23,
 12/28/23, JMR



O.D.O.T. DISTRICT 2 SURVEY OFFICE (USE ONLY)

PERSONNEL

REFERENCE NO. 14

SHEET 16 OF 30

NOTES FINGER

DATE 5/24/11

ROUTE SR 587

H.C. MOSER

WEATHER OVERCAST

COUNTY SENECA

R.C. HARBAUGH

TEMP. 65°

TOWNSHIP BIG SPRINGS

SECTION 13

DWG BY NIESE

PID PAVE TRAIN

T 1 N R 13 E

TYPE MONUMENT P.K./WASHER

ON SURFACE - ~~BELOW~~ ON

OFFSET ☉ PAVEMENT ON LT : RT

10.6' TO RT EDGE PAVEMENT

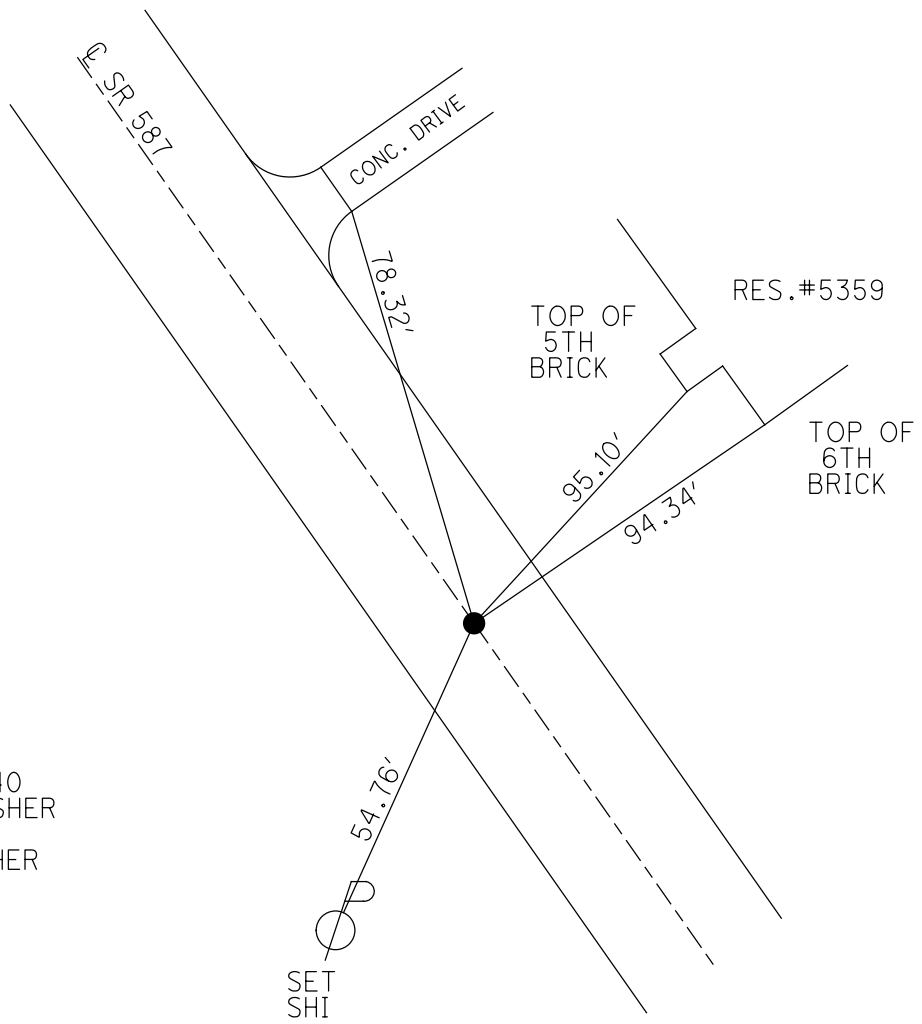
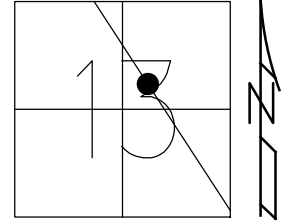
STATION: 232+35.40

HORZ.DATUM: NAD83

GEOID: 2009

GRID: NORTHING: 503264.799

EASTING: 1744366.813



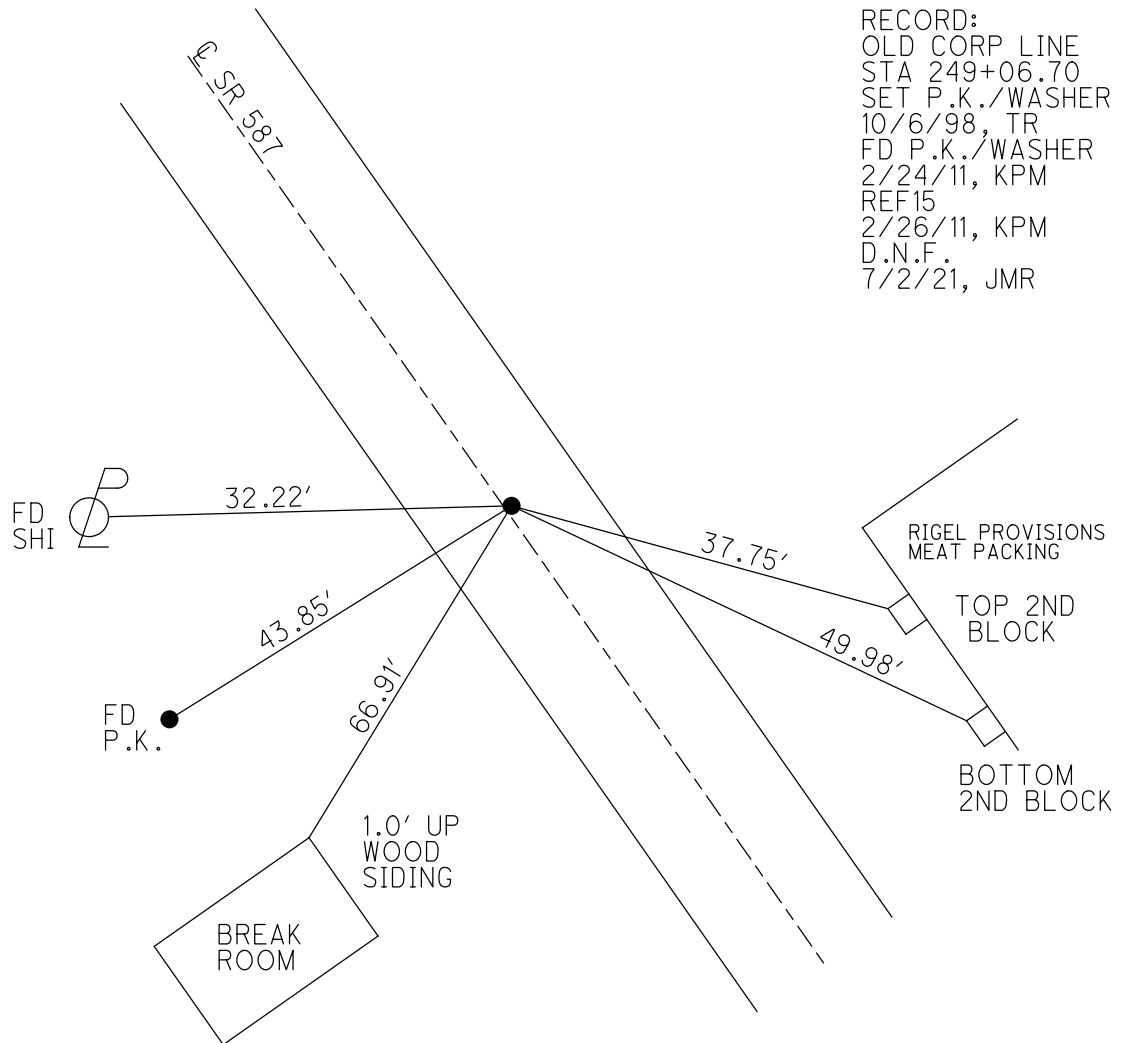
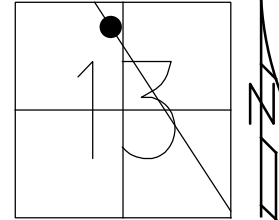
RECORD: P.I.
 $\Delta = 00^{\circ}06'$ LT
 REC 232+35.40
 SET P.K./WASHER
 10/6/98, TR
 FD P.K./WASHER
 5/24/11, KPM
 REF14
 5/26/11, KPM
 9/12/11
 7/2/21, JMR

O.D.O.T. DISTRICT 2 SURVEY OFFICE (USE ONLY)

PERSONNEL _____ REFERENCE NO. 15 SHEET 17 OF 30
 NOTES FINGER DATE 5/24/11 ROUTE SR 587
 H.C. MOSER WEATHER OVERCAST COUNTY SENECA
 R.C. HARBAUGH TEMP. 65° TOWNSHIP BIG SPRINGS
 DWG BY NIESE PID PAVE TRAIN SECTION 13
 T 1 N R 13 E

TYPE MONUMENT P.K./WASHER
 ON SURFACE - ~~BELOW~~ ON
 OFFSET 10.2' TO RT EDGE PAVEMENT
 STATION: 249+06.70

HORIZ.DATUM: NAD83 GEOID: 2009
 GRID: NORTHING: 504656.993 EASTING: 1743444.708



RECORD:
 OLD CORP LINE
 STA 249+06.70
 SET P.K./WASHER
 10/6/98, TR
 FD P.K./WASHER
 2/24/11, KPM
 REF15
 2/26/11, KPM
 D.N.F.
 7/2/21, JMR

O.D.O.T. DISTRICT 2 SURVEY OFFICE (USE ONLY)

PERSONNEL

REFERENCE NO. 16

SHEET 18 OF 30

NOTES FINGER
 H.C. MOSER
 R.C. HARBAUGH

DATE 5/24/11
 WEATHER OVERCAST
 TEMP. 65°

ROUTE SR 587
 COUNTY SENECA
 TOWNSHIP BIG SPRINGS
 SECTION 12
 T 1 N R 13 E

DWG BY NIESE PID PAVE TRAIN

TYPE MONUMENT MAG

ON SURFACE - ~~BELOW~~ ON

OFFSET Q PAVEMENT 0.6' ~~LT~~ : RT
10.2' TO RT EDGE PAVEMENT

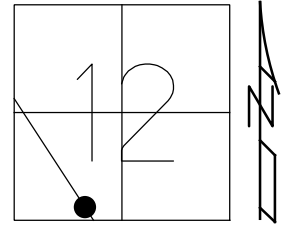
STATION: 260+15.70

HORZ.DATUM: NAD83

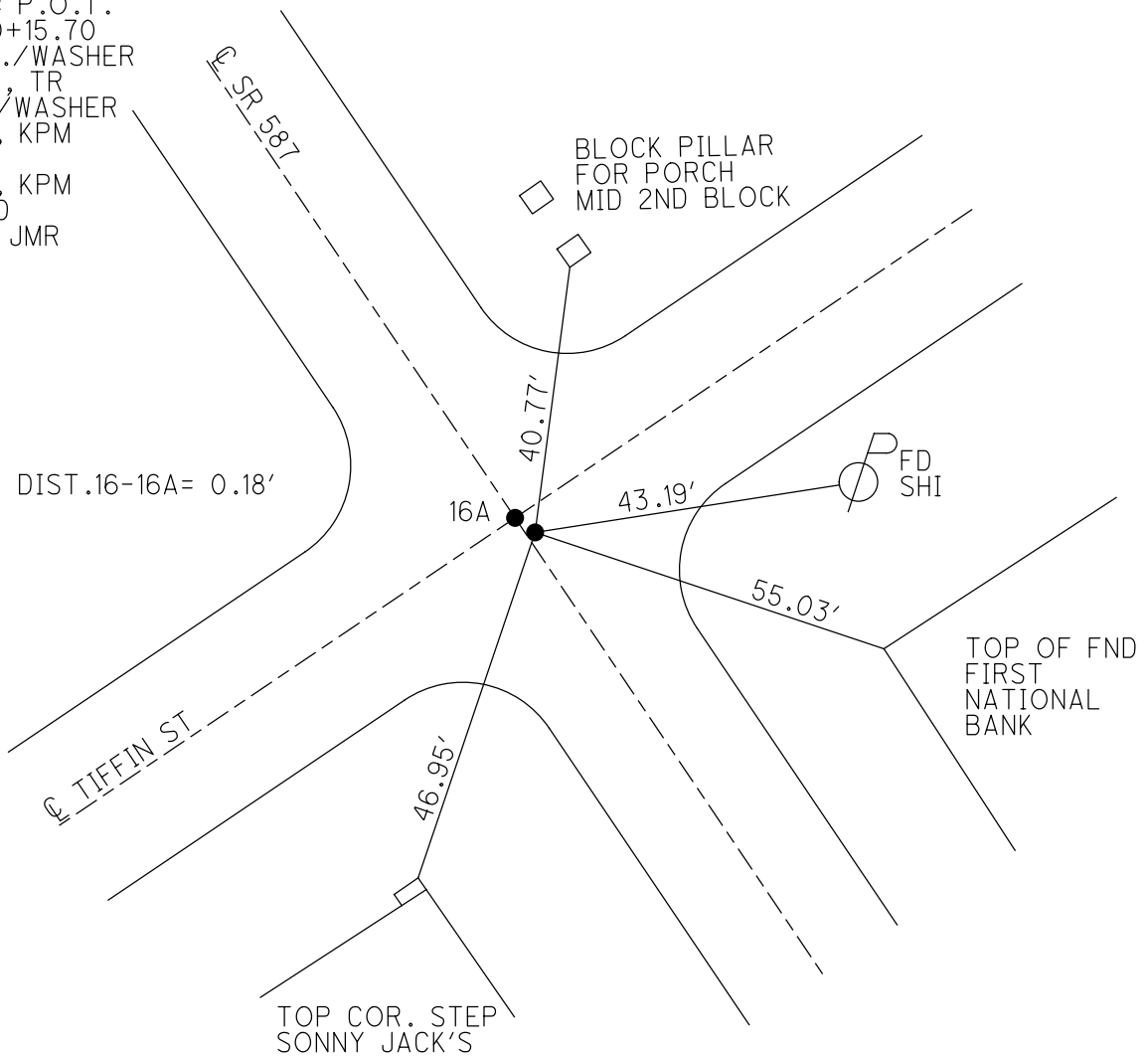
GEOID: 2009

GRID: NORTHING: 505581.332

EASTING: 1742831.854



RECORD: P.O.T.
 STA 260+15.70
 SET P.K./WASHER
 10/6/98, TR
 FD P.K./WASHER
 5/24/11, KPM
 REFA16
 5/26/11, KPM
 COVERED
 7/2/21, JMR



O.D.O.T. DISTRICT 2 SURVEY OFFICE (USE ONLY)

PERSONNEL

REFERENCE NO. 16A

SHEET 19 OF 30

NOTES FINGER DATE 5/24/11
 H.C. MOSER WEATHER OVERCAST
 R.C. HARBAUGH TEMP. 75°

ROUTE SR 587
 COUNTY SENECA
 TOWNSHIP BIG SPRINGS
 SECTION 12
 T 1 N R 13 E

DWG BY NIESE PID PAVE TRAIN

TYPE MONUMENT MAG

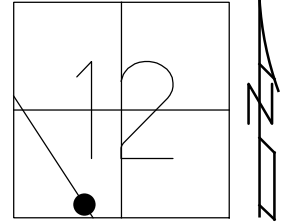
ON SURFACE - ~~BELOW~~ ON

OFFSET ☉ PAVEMENT ON LT : RT
- TO - EDGE PAVEMENT

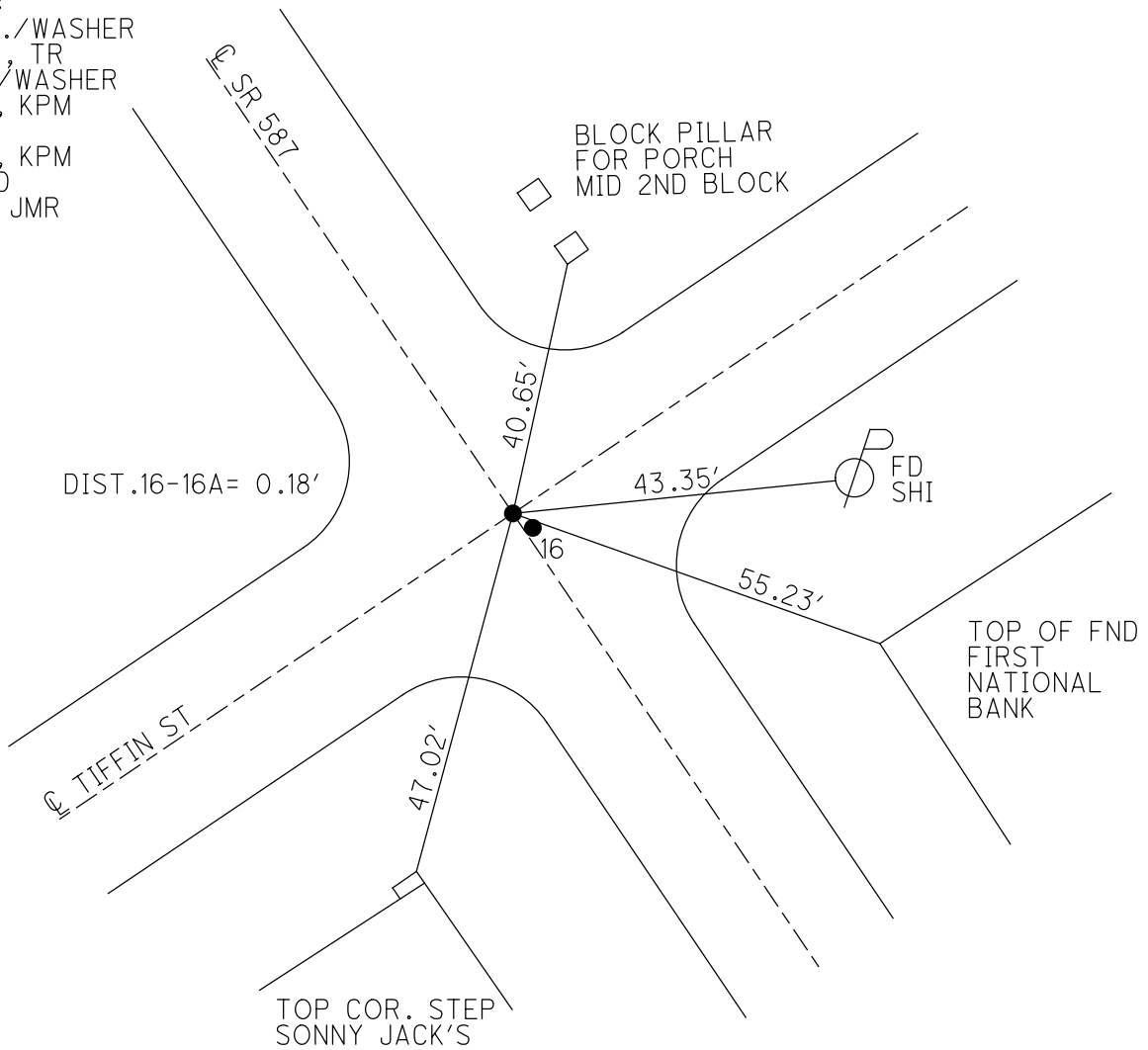
STATION: 260+15.88

HORZ.DATUM: NAD83 GEOID: 2009

GRID: NORTHING: 505581.464 EASTING: 1742831.708



RECORD:
 SET P.K./WASHER
 10/6/98, TR
 FD P.K./WASHER
 5/24/11, KPM
 REB16
 5/26/11, KPM
 COVERED
 7/2/21, JMR



O.D.O.T. DISTRICT 2 SURVEY OFFICE (USE ONLY)

PERSONNEL

REFERENCE NO. 17

SHEET 20 OF 30

NOTES FINGER

DATE 5/24/11

ROUTE SR 587

H.C. MOSER

WEATHER OVERCAST

COUNTY SENECA

R.C. _____

TEMP. 65°

TOWNSHIP BIG SPRINGS

HARBAUGH

SECTION 12

DWG BY NIESE PID PAVE TRAIN

T 1 N R 13 E

TYPE MONUMENT P.K./WASHER

ON SURFACE - ~~BELOW~~ ON

OFFSET C PAVEMENT 1.6' LT : ~~RT~~

12.3' TO RT EDGE PAVEMENT

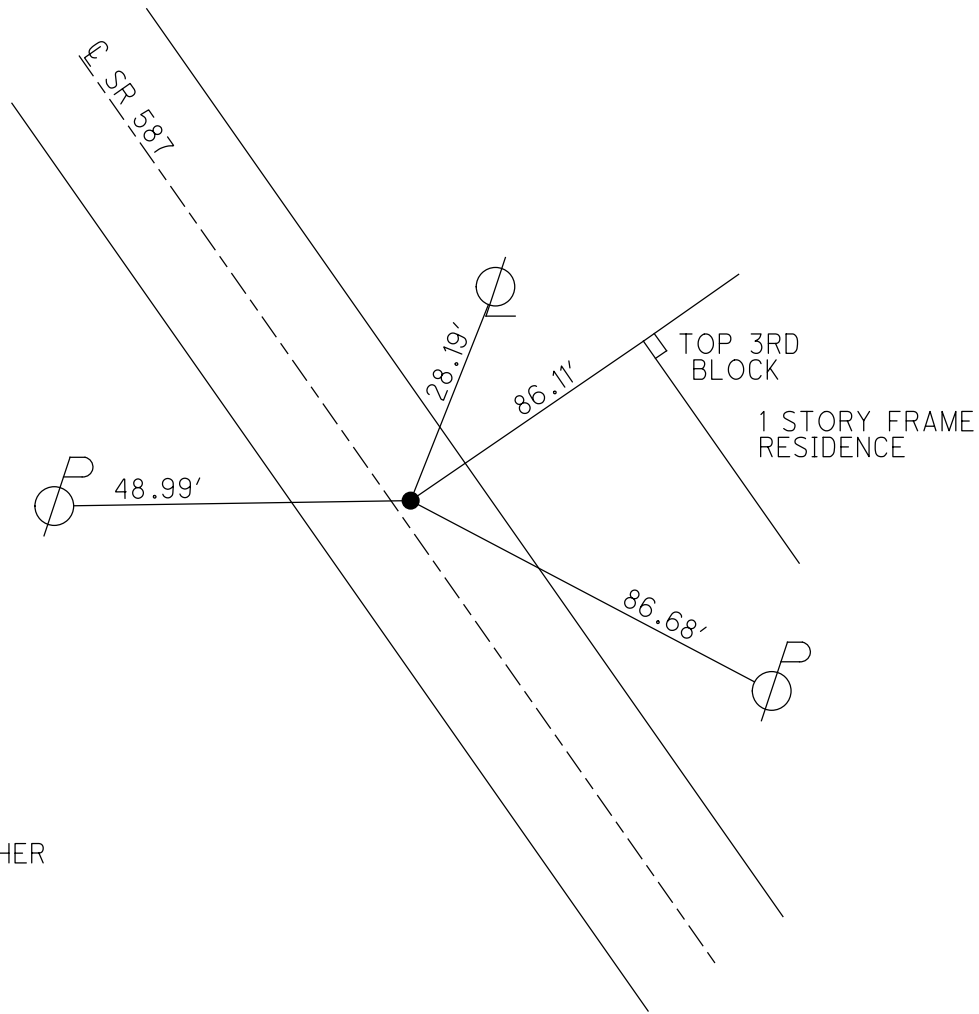
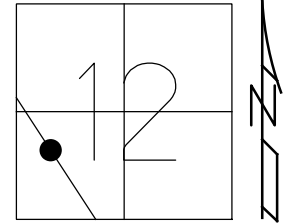
STATION: 276+37

HORZ.DATUM: NAD83

GEOID: 2009

GRID: NORTHING: 506942.641

EASTING: 1741930.078



RECORD:
STA 275+37
FD P.K./WASHER
5/24/11, KPM
REF17
5/26/11, KPM
COVERED
7/2/21, JMR

O.D.O.T. DISTRICT 2 SURVEY OFFICE (USE ONLY)

PERSONNEL

REFERENCE NO. 18

SHEET 21 OF 30

NOTES FINGER

DATE 5/24/11

ROUTE SR 587

H.C. MOSER

WEATHER SUNNY

COUNTY SENECA

R.C. HARBAUGH

TEMP. 75°

TOWNSHIP BIG SPRINGS

DWG BY NIESE PID PAVE TRAIN

SECTION 12

T 1 N R 13 E

TYPE MONUMENT P.K./WASHER

ON SURFACE - ~~BELOW~~ ON

OFFSET Q PAVEMENT 2.5' LT : ~~RT~~

9.0' TO LT EDGE PAVEMENT

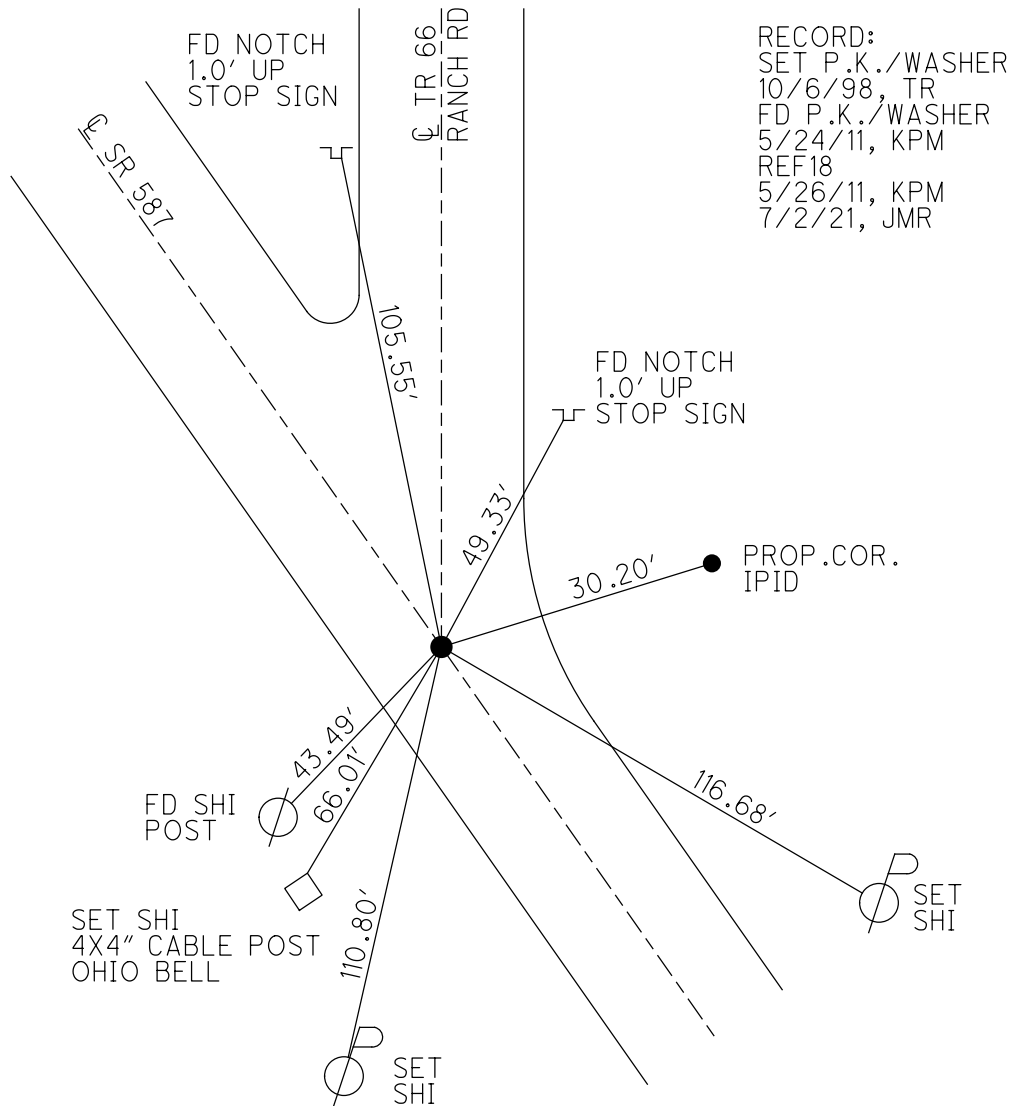
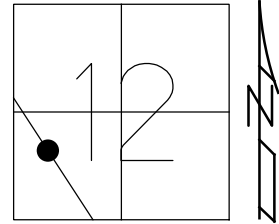
STATION: 290+87

HORZ.DATUM: NAD83

GEOID: 2009

GRID: NORTHING: 508187.184

EASTING: 1741100.374



O.D.O.T. DISTRICT 2 SURVEY OFFICE (USE ONLY)

PERSONNEL

REFERENCE NO. 19

SHEET 22 OF 30

NOTES FINGER
 H.C. MOSE
 R.C. HARBAUGH

DATE 5/24/11
 WEATHER SUNNY
 TEMP. 75°

ROUTE SR 587
 COUNTY SENECA
 TOWNSHIP BIG SPRINGS
 SECTION 11
 T 1 N R 13 E

DWG BY NIESE PID PAVE TRAIN

TYPE MONUMENT P.K. SHANK

ON SURFACE - ~~BELOW~~ ON

OFFSET C PAVEMENT ON LT : RT
11.0' TO RT EDGE PAVEMENT

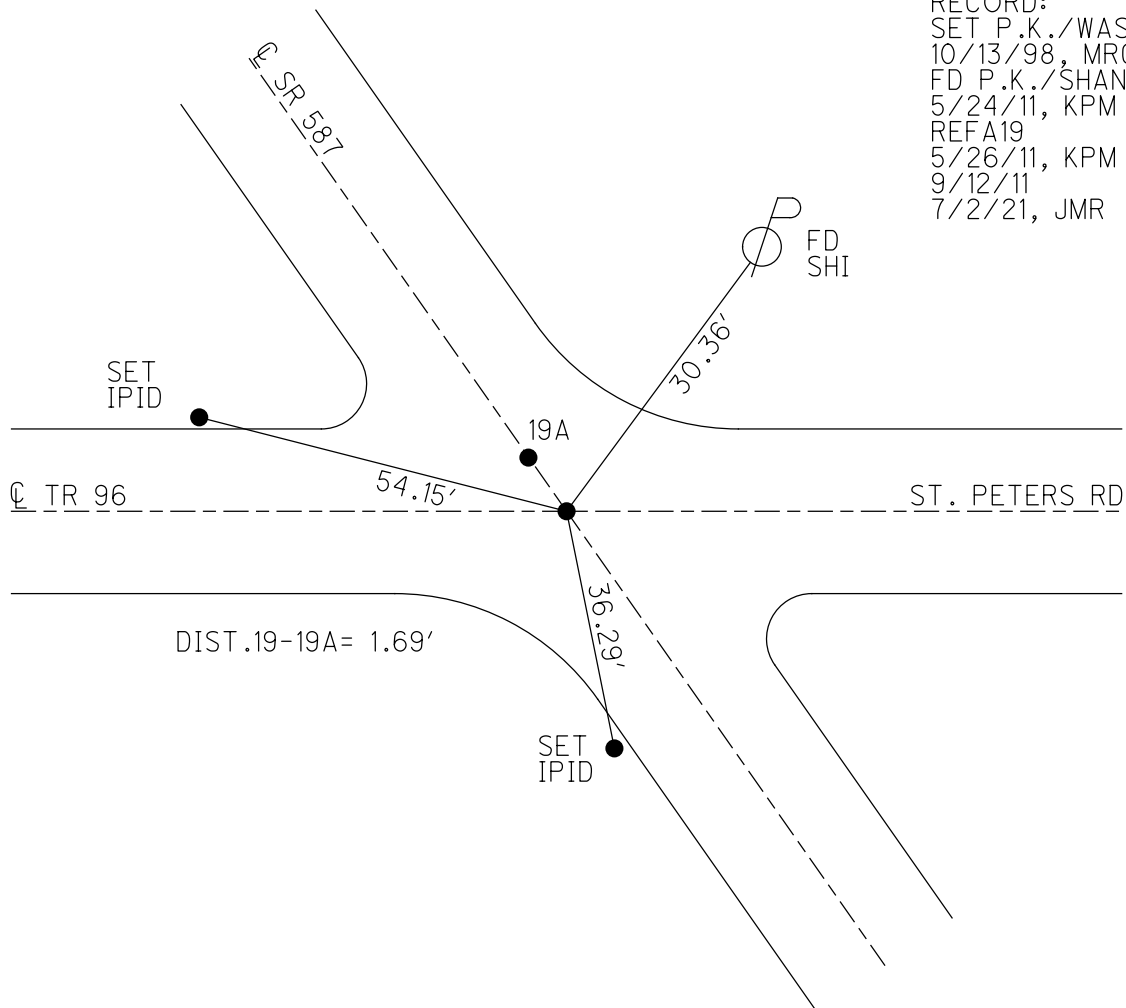
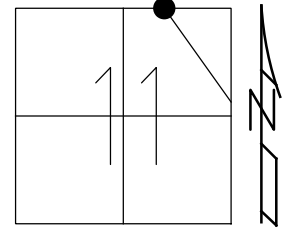
STATION: 320+03

HORZ.DATUM: NAD83

GEOID: 2009

GRID: NORTHING: 510621.505

EASTING: 1739496.298



RECORD:
 SET P.K./WASHER
 10/13/98, MRC
 FD P.K./SHANK
 5/24/11, KPM
 REFA19
 5/26/11, KPM
 9/12/11
 7/2/21, JMR

O.D.O.T. DISTRICT 2 SURVEY OFFICE (USE ONLY)

PERSONNEL

REFERENCE NO. 19 A

SHEET 23 OF 30

NOTES FINGER

DATE 5/24/11

ROUTE SR 587

H.C. MOSER

WEATHER SUNNY

COUNTY SENECA

R.C. HARBAUGH

TEMP. 75°

TOWNSHIP BIG SPRINGS

DWG BY NIESE

PID PAVE TRAIN

SECTION 11

T 1 N R 13 E

TYPE MONUMENT P.K./WASHER

ON SURFACE - ~~BELOW~~ ON

OFFSET Q PAVEMENT ON LT : RT

11.0' TO RT EDGE PAVEMENT

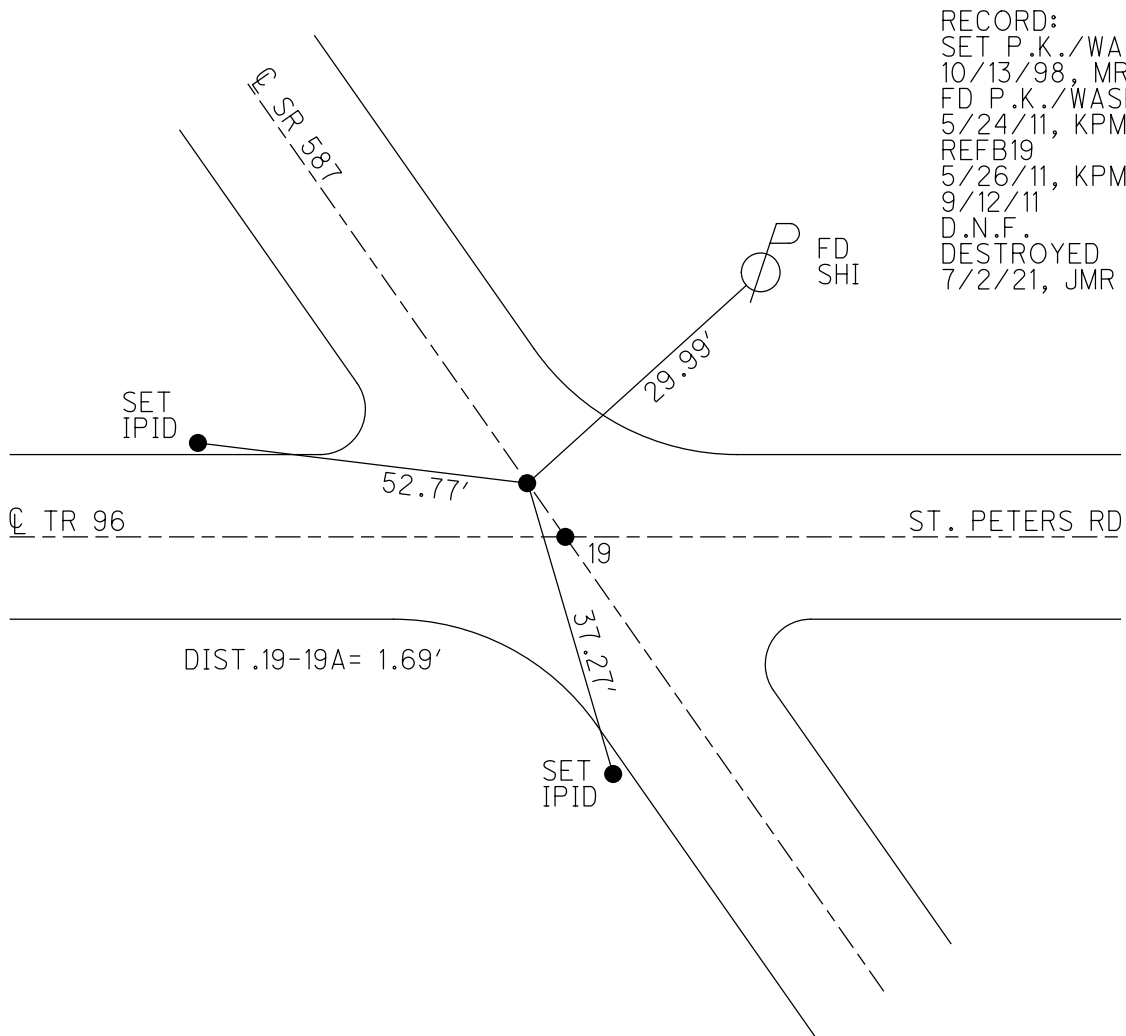
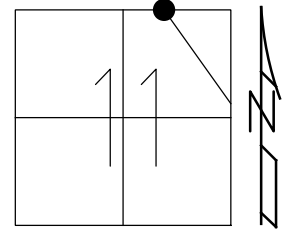
STATION: 320+04.69

HORZ.DATUM: NAD83

GEOID: 2009

GRID: NORTHING: 510622.915

EASTING: 1739495.376

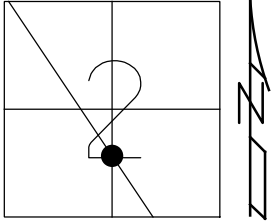


RECORD:
 SET P.K./WASHER
 10/13/98, MRC
 FD P.K./WASHER
 5/24/11, KPM
 REFB19
 5/26/11, KPM
 9/12/11
 D.N.F.
 DESTROYED
 7/2/21, JMR

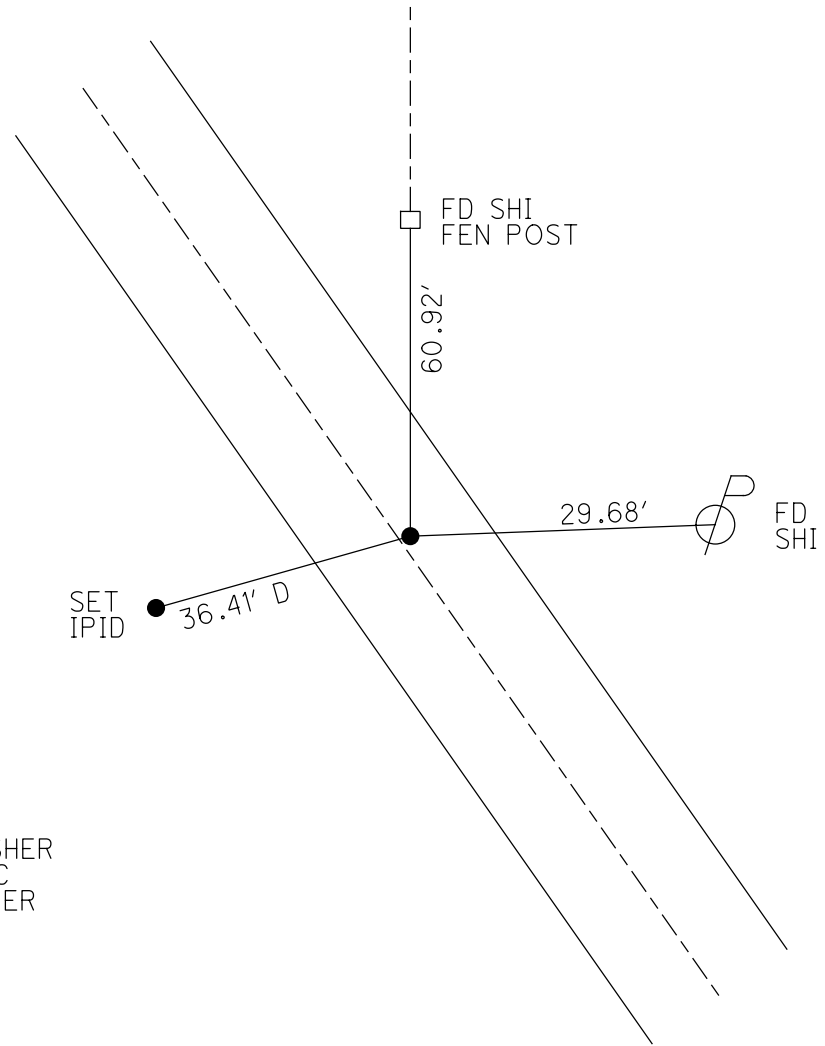
O.D.O.T. DISTRICT 2 SURVEY OFFICE (USE ONLY)

PERSONNEL _____ REFERENCE NO. 20 SHEET 24 OF 30
 NOTES FINGER DATE 5/25/11 ROUTE SR 587
 H.C. MOSER WEATHER SUNNY COUNTY SENECA
 R.C. LUMBREZER TEMP. 60° TOWNSHIP BIG SPRINGS
 DWG BY NIESE PID PAVE TRAIN SECTION 2
 T 1 N R 13 E

TYPE MONUMENT P.K./WASHER
 ON SURFACE - ~~BELOW~~ ON
 OFFSET Q PAVEMENT 0.4' ~~LT~~ : RT
11.4' TO RT EDGE PAVEMENT
 STATION: 338+53



HORZ.DATUM: NAD83 GEOID: 2009
 GRID: NORTHING: 512173.369 EASTING: 1738465.839



SET P.K./WASHER
 10/13/98, MRC
 FD P.K./WASHER
 5/25/11, KPM
 REF20
 5/26/11, KPM
 9/12/11
 */2/21, JMR

O.D.O.T. DISTRICT 2 SURVEY OFFICE (USE ONLY)

PERSONNEL

REFERENCE NO. 21

SHEET 25 OF 30

NOTES MILLER

DATE 12/28/23

ROUTE SR 587

H.C. RHOADES

WEATHER RAIN

COUNTY SENECA

R.C. MILLER

TEMP. 44°

TOWNSHIP BIG SPRINGS

DWG BY RHOADES

PID PAVING TRAIN

SECTION 2

T 1 N R 13 E

TYPE MONUMENT P.K.NAIL

ON SURFACE - ~~BELOW~~ ON

OFFSET 0.6' LT : ~~RT~~

12.3' TO RT EDGE PAVEMENT

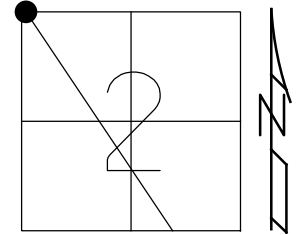
STATION: 383+90

HORZ.DATUM: NAD83 2011

GEOID: NAVD88 2018

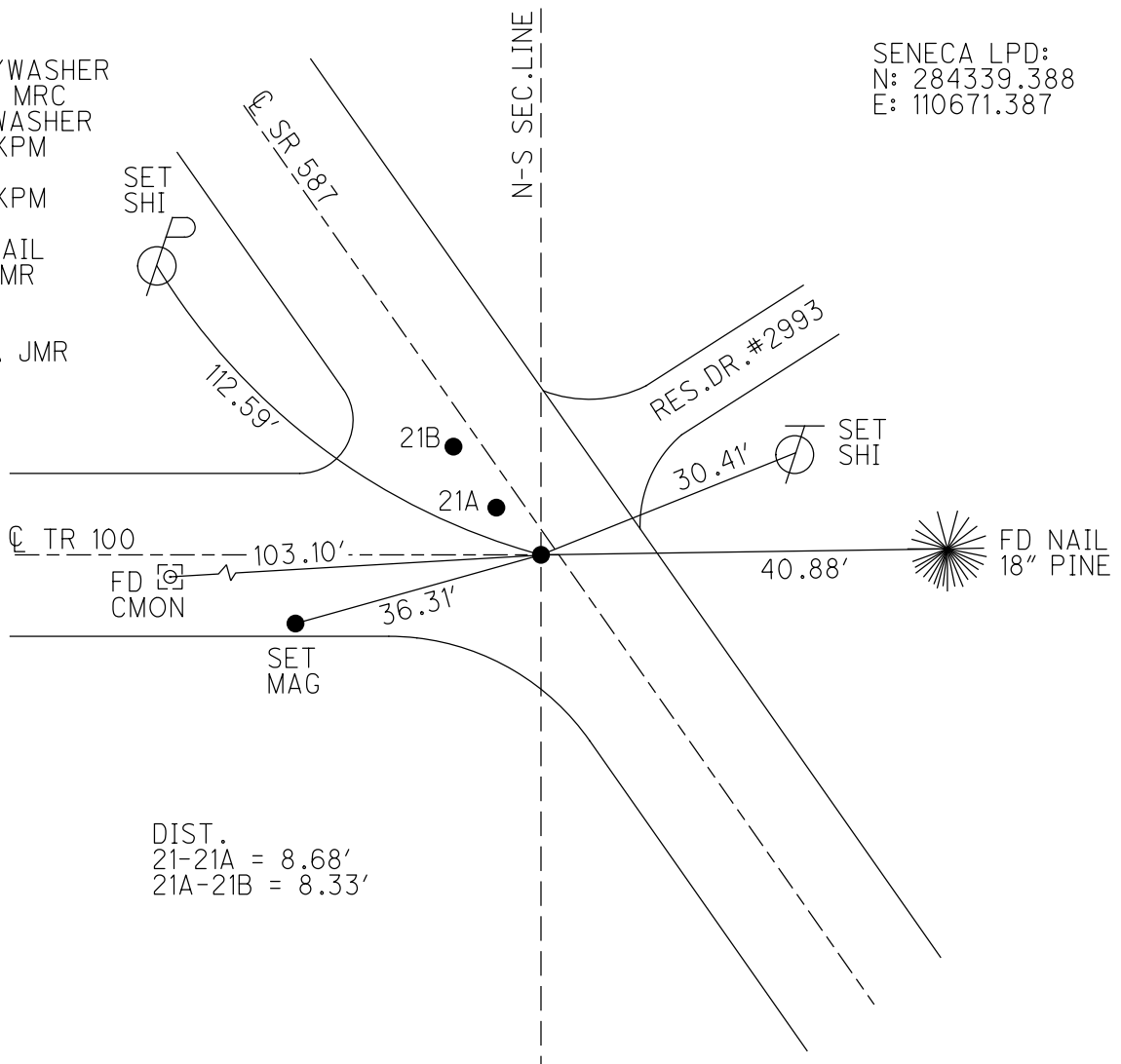
GRID: NORTHING: 515955.972

EASTING: 1735944.070



RECORD:
 SET P.K./WASHER
 10/13/98, MRC
 FD P.K./WASHER
 5/25/11, KPM
 REFA21
 5/26/11, KPM
 9/12/11
 FD P.K. NAIL
 7/2/21, JMR
 REF21
 9/15/23,
 12/28/23, JMR

SENECA LPD:
 N: 284339.388
 E: 110671.387



DIST.
 21-21A = 8.68'
 21A-21B = 8.33'

O.D.O.T. DISTRICT 2 SURVEY OFFICE (USE ONLY)

PERSONNEL

REFERENCE NO. 21 A

SHEET 26 OF 30

NOTES MILLER DATE 12/28/23
 H.C. RHOADES WEATHER RAIN
 R.C. MILLER TEMP. 44°

ROUTE SR 587
 COUNTY SENECA
 TOWNSHIP BIG SPRINGS
 SECTION 2
 T 1 N R 13 E

DWG BY NIESE PID PAVING TRAIN

TYPE MONUMENT P.K.NAIL

ON SURFACE - ~~BELOW~~ ON

OFFSET 2.1' LT : ~~RT~~

13.6' TO RT EDGE PAVEMENT

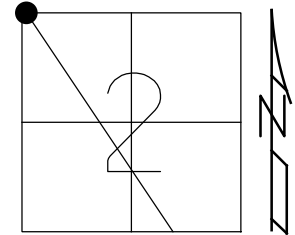
STATION: 383+99

HORZ.DATUM: NAD83 2011

GEOID: NAVD88 2018

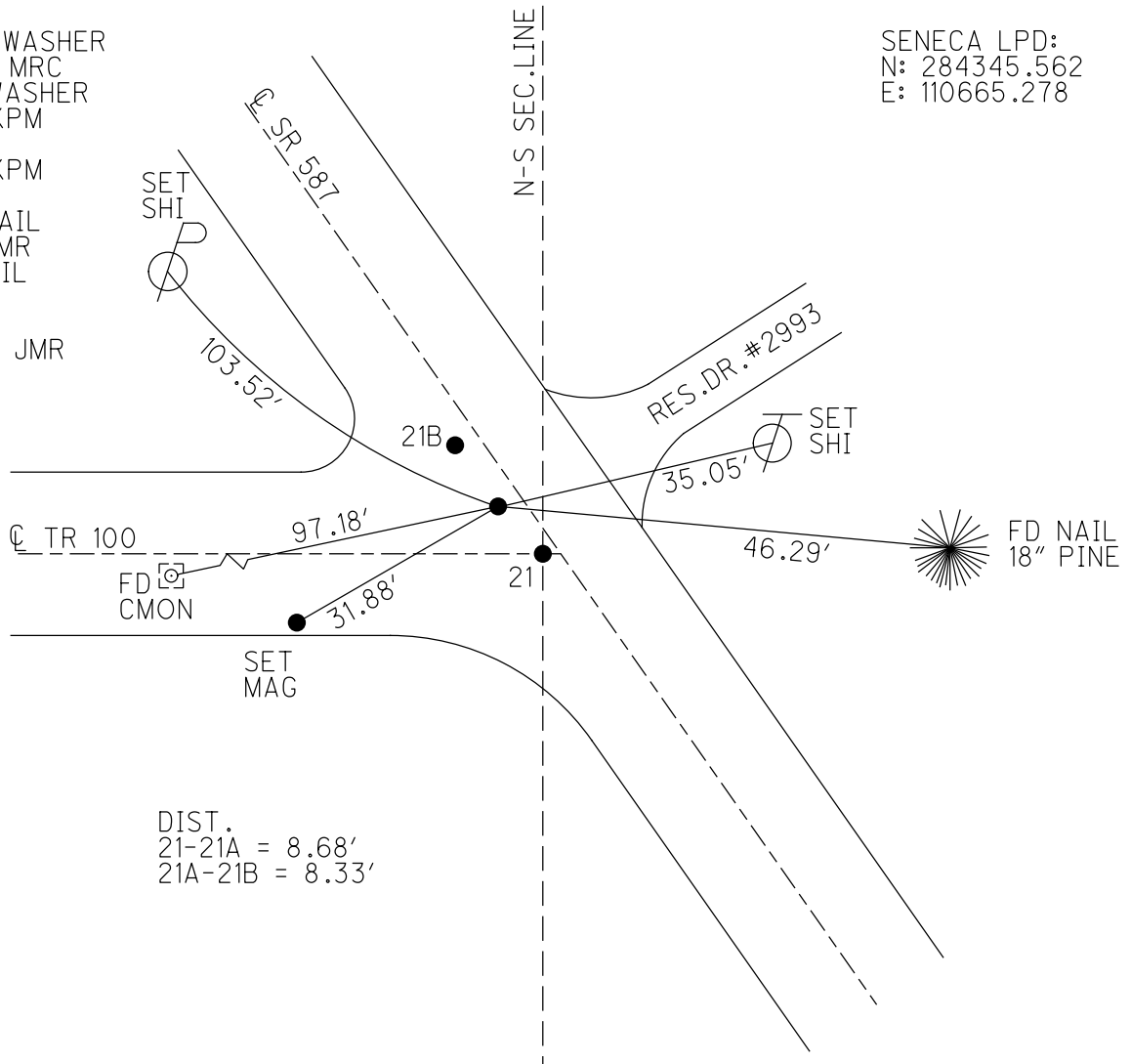
GRID: NORTHING: 515962.191

EASTING: 1735938.009



RECORD:
 SET P.K./WASHER
 10/13/98, MRC
 FD P.K./WASHER
 5/25/11, KPM
 REFB21
 5/26/11, KPM
 9/12/11
 FD P.K. NAIL
 7/2/21, JMR
 FD P.K.NAIL
 REF21A
 9/15/23,
 12/28/23, JMR

SENECA LPD:
 N: 284345.562
 E: 110665.278



DIST.
 21-21A = 8.68'
 21A-21B = 8.33'

O.D.O.T. DISTRICT 2 SURVEY OFFICE (USE ONLY)

PERSONNEL

REFERENCE NO. 21 B

SHEET 28 OF 30

NOTES MILLER DATE 12/28/23

H.C. RHOADES WEATHER RAIN

R.C. MILLER TEMP. 44°

ROUTE SR 587

COUNTY SENECA

TOWNSHIP BIG SPRINGS

SECTION 2

DWG BY RHOADES PID PAVING TRAIN

T 1 N R 13 E

TYPE MONUMENT MAG NAIL

ON SURFACE - ~~BELOW~~ ON

OFFSET ☐ PAVEMENT 2.1' LT : ~~RT~~

13.6' TO RT EDGE PAVEMENT

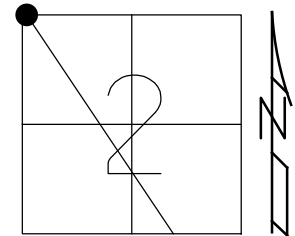
STATION: 384+07

HORIZ.DATUM: NAD83 2011

GEOID: NAVD88 2018

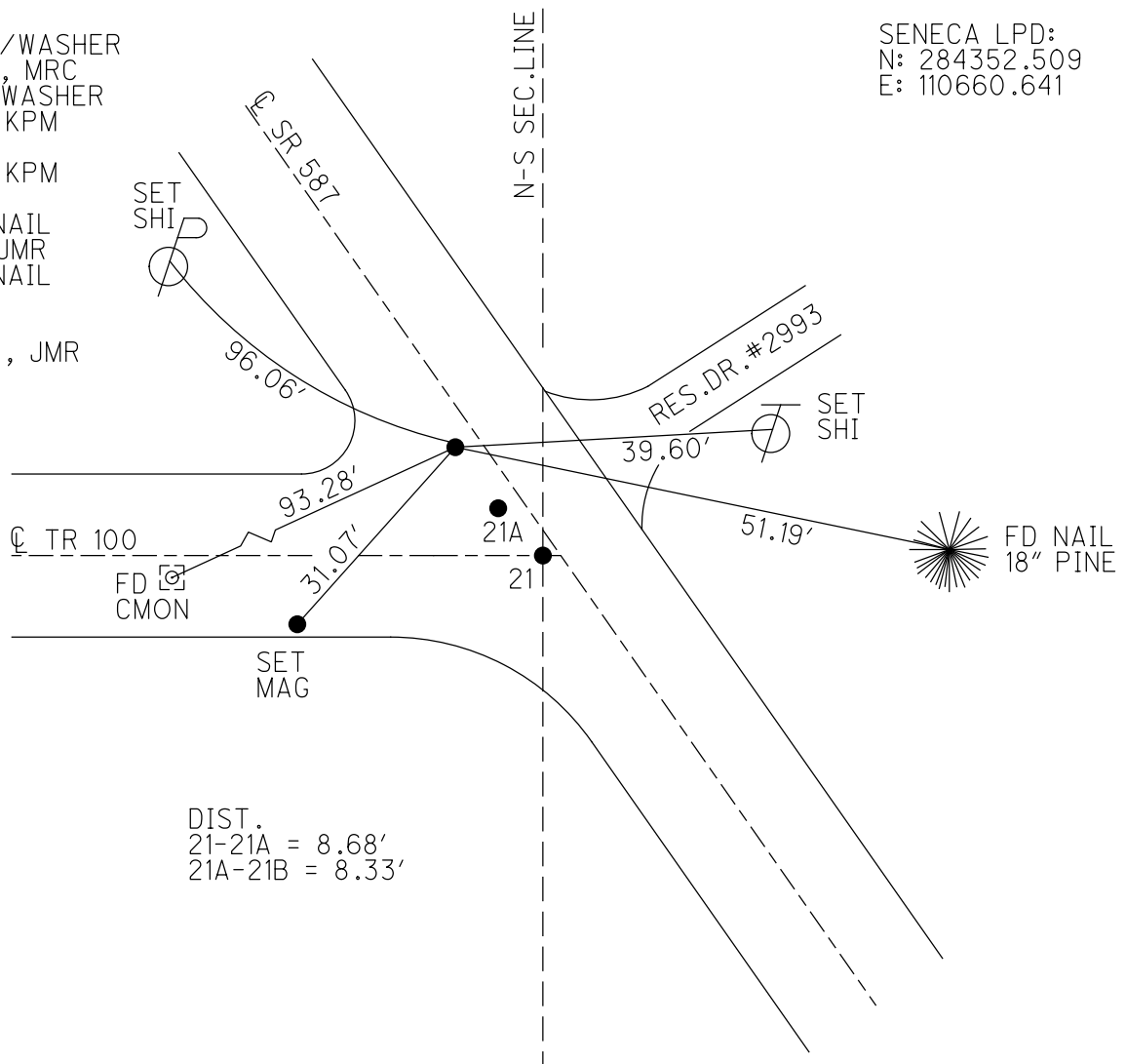
GRID: NORTHING: 515969.172

EASTING: 1735933.424



RECORD:
 SET P.K./WASHER
 10/13/98, MRC
 FD P.K./WASHER
 5/25/11, KPM
 REFC21
 5/26/11, KPM
 9/12/11
 FD MAG NAIL
 7/2/21, JMR
 FD MAG NAIL
 REF21B
 9/15/23.
 12/28/23, JMR

SENECA LPD:
 N: 284352.509
 E: 110660.641



DIST.
 21-21A = 8.68'
 21A-21B = 8.33'

O.D.O.T. DISTRICT 2 SURVEY OFFICE

PERSONNEL	REFERENCE NO. <u>23 A</u>	SHEET <u>30</u> OF <u>30</u>
NOTES <u>FINGER</u>	DATE <u>5-24-11</u>	ROUTE <u>SR 587</u>
H.C. <u>MOSER</u>	WEATHER <u>SUNNY</u>	COUNTY <u>SENECA</u>
R.C. <u>LUMBREZER</u>	TEMP. <u>60°</u>	TOWNSHIP <u>LOUDON</u>
		SECTION <u>34</u>
		T <u>2</u> N R <u>13</u> E

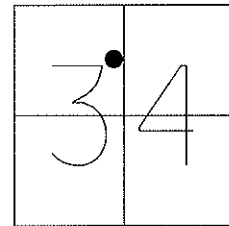
TYPE MONUMENT P.K./WASHER

~~ON SURFACE~~ - BELOW 3"

LEFT - ☉ PAV'T - RIGHT ON, 0.3' LT ☉ 224
12.3' TO LT EDGE PAVEMENT

S.L.M. 193+18.05, US 224

Grid: Northing: 519519.246 Easting: 1733619.325

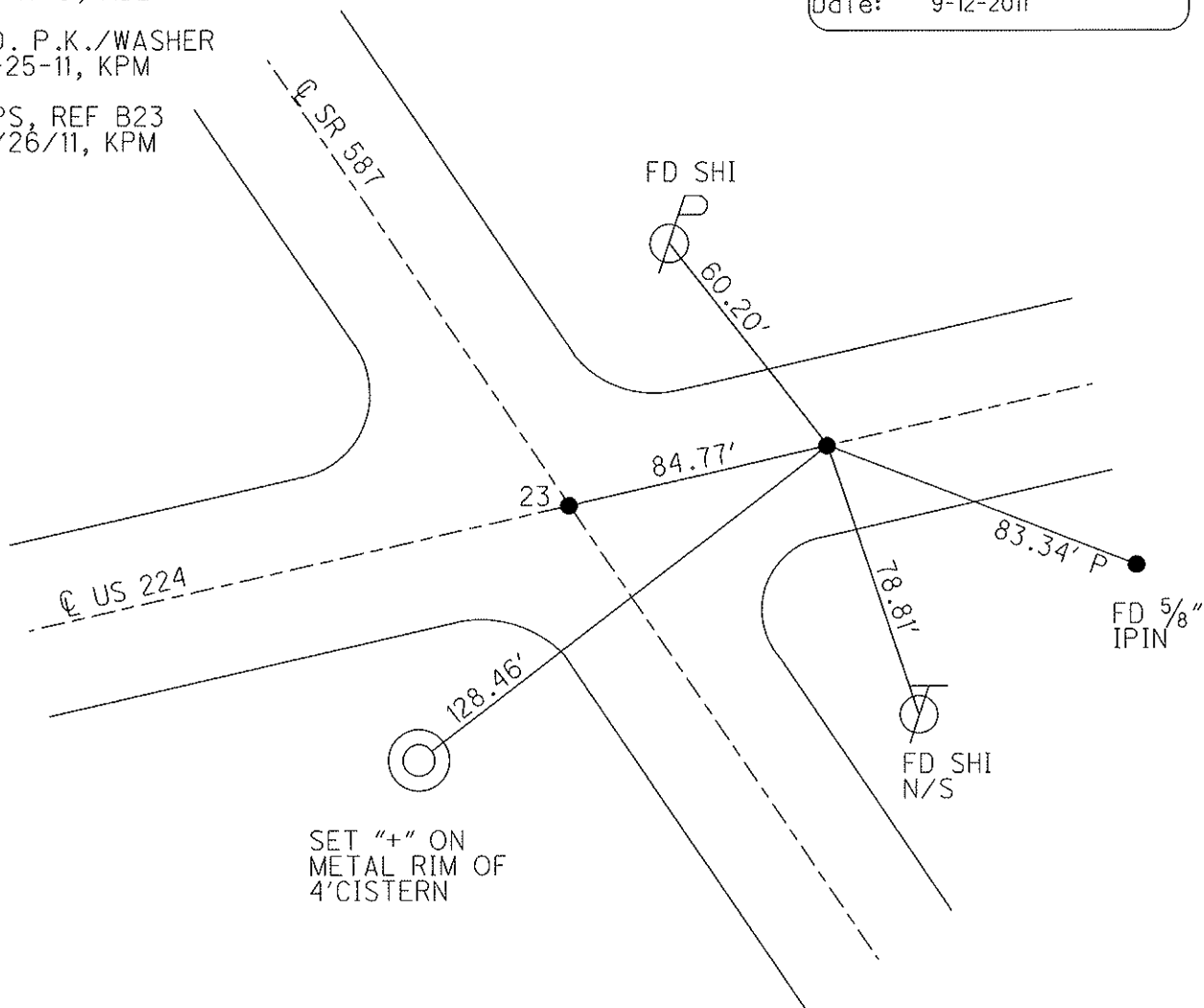


RESET PK/WASHER
10-17-8, MDB

FD. P.K./WASHER
5-25-11, KPM

GPS, REF B23
5/26/11, KPM

Preventative Maintenance
Chip & Seal
Existing Point Uncovered
Date: 9-12-2011



O.D.O.T. DISTRICT 2 SURVEY OFFICE

PERSONNEL

REFERENCE NO. 24

SHEET 1 OF 18

NOTES LUMBREZER

DATE 6/27/11

ROUTE SR 587

H.C. LUMBREZER

WEATHER GOOD

COUNTY SENECA

R.C. FINGER

TEMP. 80°

TOWNSHIP LOUDON

SECTION 27

T 2 N R 13 E

TYPE MONUMENT P.K./WASHER

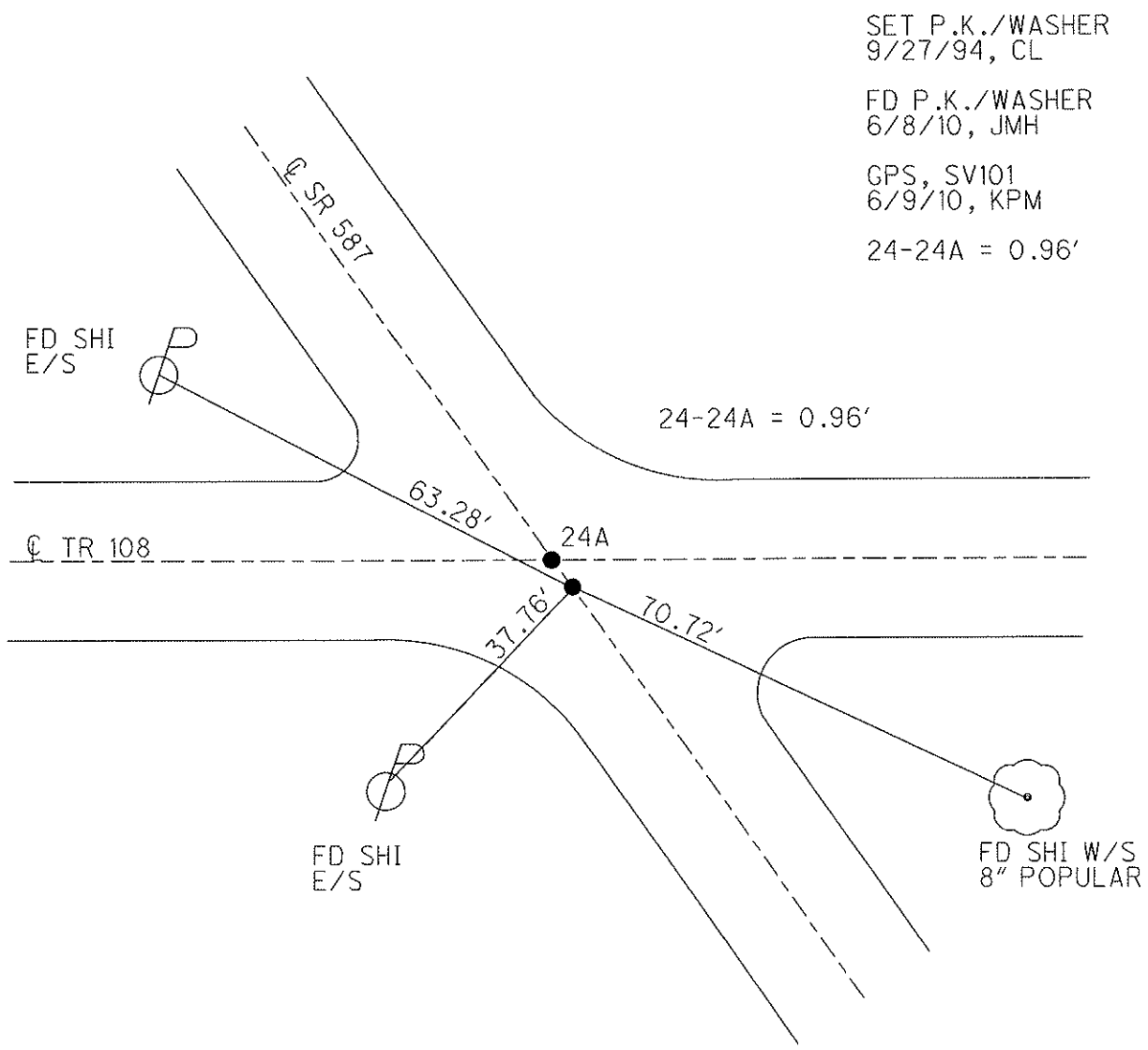
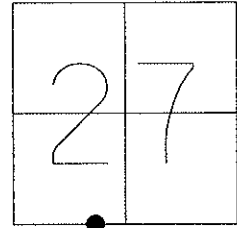
~~ON SURFACE~~ - BELOW ON

~~LEFT - Q~~ PAV'T - RIGHT 1'

TO EDGE PAVEMENT

S.L.M. 449+40.94

Grid: Northing: 521258.6179 Easting: 1732349.0004



SET P.K./WASHER
9/27/94, CL

FD P.K./WASHER
6/8/10, JMH

GPS, SV101
6/9/10, KPM

24-24A = 0.96'

FD SHI
E/S

Q TR 108

FD SHI
E/S

FD SHI W/S
8" POPULAR

O.D.O.T. DISTRICT 2 SURVEY OFFICE

PERSONNEL

REFERENCE NO. 24 A

SHEET 2 OF 18

NOTES LUMBREZER

DATE 6/27/11

ROUTE SR 587

H.C. LUMBREZER

WEATHER GOOD

COUNTY SENECA

R.C. FINGER

TEMP. 80°

TOWNSHIP LOUDON

SECTION 27

T 2 N R 13 E

TYPE MONUMENT P.K.NAIL

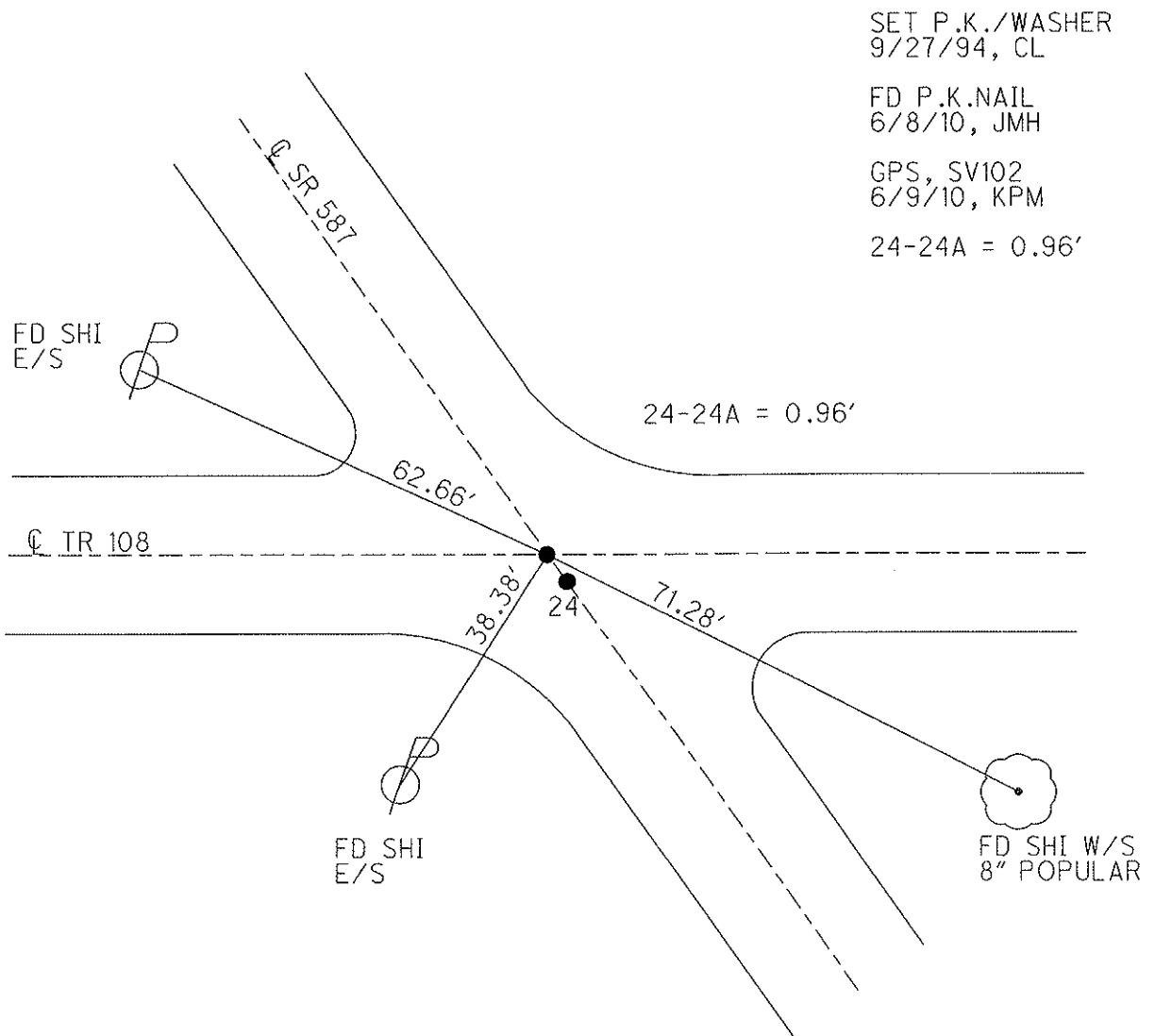
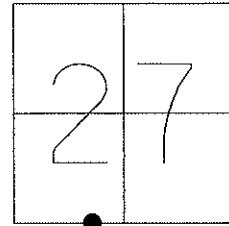
~~ON SURFACE~~ - BELOW 1"

LEFT - Q PAV'T - RIGHT 0.5'

TO EDGE PAVEMENT

S.L.M. 449+41.00

Grid: Northing: 521258.6116 Easting: 1732348.9445



SET P.K./WASHER
9/27/94, CL

FD P.K.NAIL
6/8/10, JMH

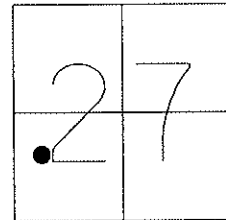
GPS, SV102
6/9/10, KPM

24-24A = 0.96'

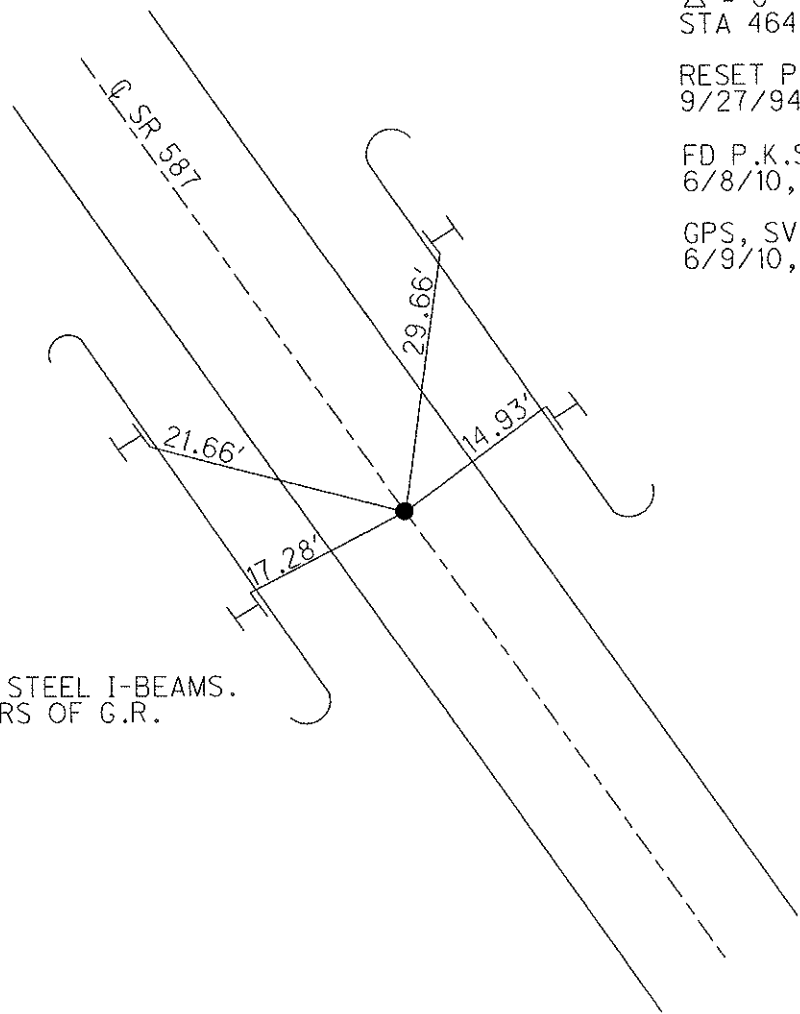
O.D.O.T. DISTRICT 2 SURVEY OFFICE

PERSONNEL	REFERENCE NO. <u>25</u>	SHEET <u>3</u> OF <u>18</u>
NOTES <u>LUMBREZER</u>	DATE <u>6/27/11</u>	ROUTE <u>SR 587</u>
H.C. <u>LUMBREZER</u>	WEATHER <u>GOOD</u>	COUNTY <u>SENECA</u>
R.C. <u>FINGER</u>	TEMP. <u>80°</u>	TOWNSHIP <u>LOUDON</u>
		SECTION <u>27</u>
		T <u>2</u> N R <u>13</u> E

TYPE MONUMENT P.K.SHANK
 ON SURFACE - ~~BELOW~~ ON _____
 LEFT - Q PAV'T - ~~RIGHT~~ 0.5'
9.5' TO LT EDGE PAVEMENT
 S.L.M. 465+47.76
 Grid: Northing: 522594.6971 Easting: 1731456.4553



11/13/94 RECORD P.I.
 $\Delta = 0^{\circ} 10' \text{ REC}$
 $\Delta = 0^{\circ} 10' 30'' \text{ MEAS}$
 STA 464+69.50
 RESET P.K./WASHER
 9/27/94, CL
 FD P.K.SHANK
 6/8/10, JMH
 GPS, SV103
 6/9/10, KPM

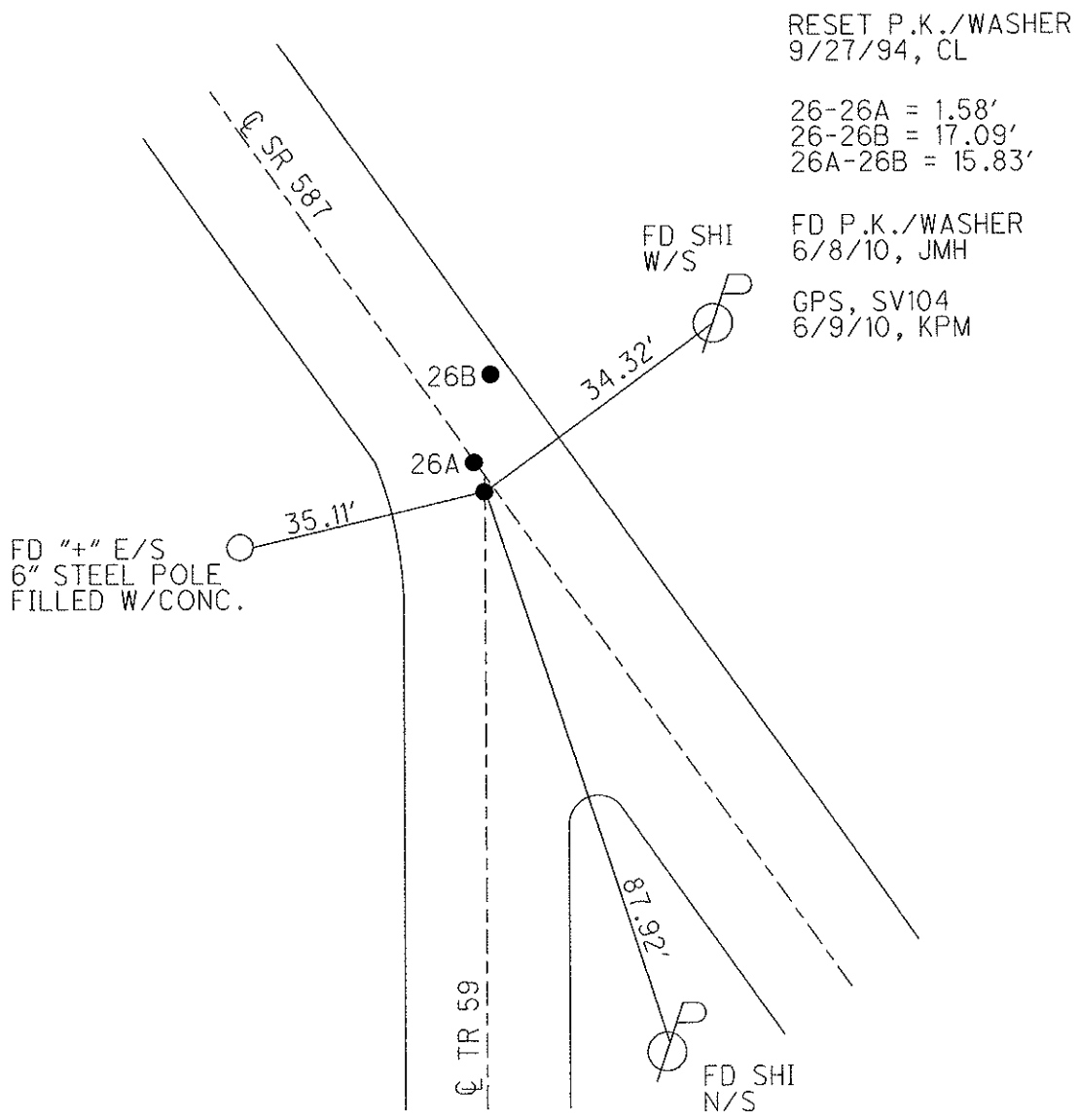
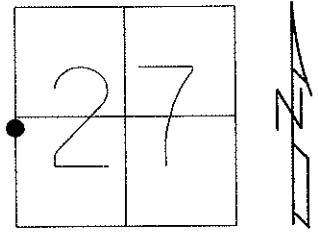


FD NOTCH IN STEEL I-BEAMS.
 ALL 4 CORNERS OF G.R.

O.D.O.T. DISTRICT 2 SURVEY OFFICE

PERSONNEL	REFERENCE NO. <u>26</u>	SHEET <u>4</u> OF <u>18</u>
NOTES <u>LUMBREZER</u>	DATE <u>6/27/11</u>	ROUTE <u>SR 587</u>
H.C. <u>LUMBREZER</u>	WEATHER <u>GOOD</u>	COUNTY <u>SENECA</u>
R.C. <u>FINGER</u>	TEMP. <u>80°</u>	TOWNSHIP <u>LOUDON</u>
		SECTION <u>27</u>
		T <u>2</u> N R <u>13</u> E

TYPE MONUMENT P.K./WASHER
 ON SURFACE - ~~BELOW~~ ON _____
 LEFT - Q PAV'T - RIGHT 1.2'
11.3' TO RT EDGE PAVEMENT
 S.L.M. 478+16.76
 Grid: Northing: 523652.0145 Easting: 1730754.7271



O.D.O.T. DISTRICT 2 SURVEY OFFICE

PERSONNEL _____

REFERENCE NO. 26 B

SHEET 6 OF 18

NOTES LUMBREZER

DATE 6/27/11

ROUTE SR 587

H.C. LUMBREZER

WEATHER GOOD

COUNTY SENECA

R.C. FINGER

TEMP. 80°

TOWNSHIP LOUDON

SECTION 27

T 2 N R 13 E

TYPE MONUMENT P.K./WASHER

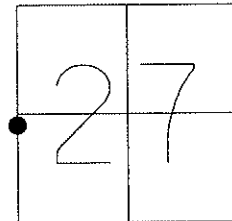
~~ON SURFACE~~ - BELOW 0.8'

~~LEFT - C~~ PAV'T - RIGHT 8.2'

1.6' TO RT EDGE PAVEMENT

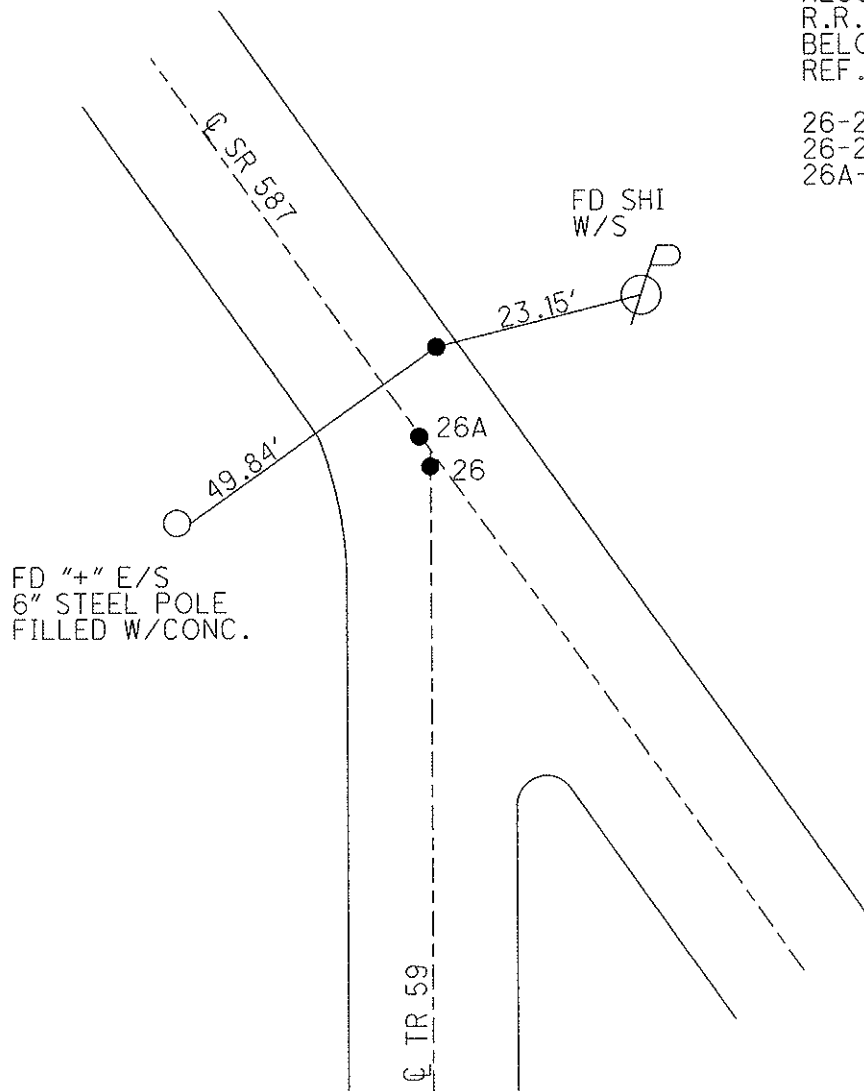
S.L.M. _____

Grid: Northing: 523669.1644 Easting: 1730755.1043



RECORD:
R.R. SPIKE 7 1/2"
BELOW SURFACE.
REF. BOOK E-CO. ENG.

26-26A = 1.58'
26-26B = 17.09'
26A-26B = 15.83'



O.D.O.T. DISTRICT 2 SURVEY OFFICE

PERSONNEL

REFERENCE NO. 27

SHEET 7 OF 18

NOTES LUMBREZER

DATE 6/27/11

ROUTE SR 587

H.C. LUMBREZER

WEATHER GOOD

COUNTY SENECA

R.C. FINGER

TEMP. 80°

TOWNSHIP LOUDON

SECTION 28

T 2 N R 13 E

TYPE MONUMENT P.K./WASHER

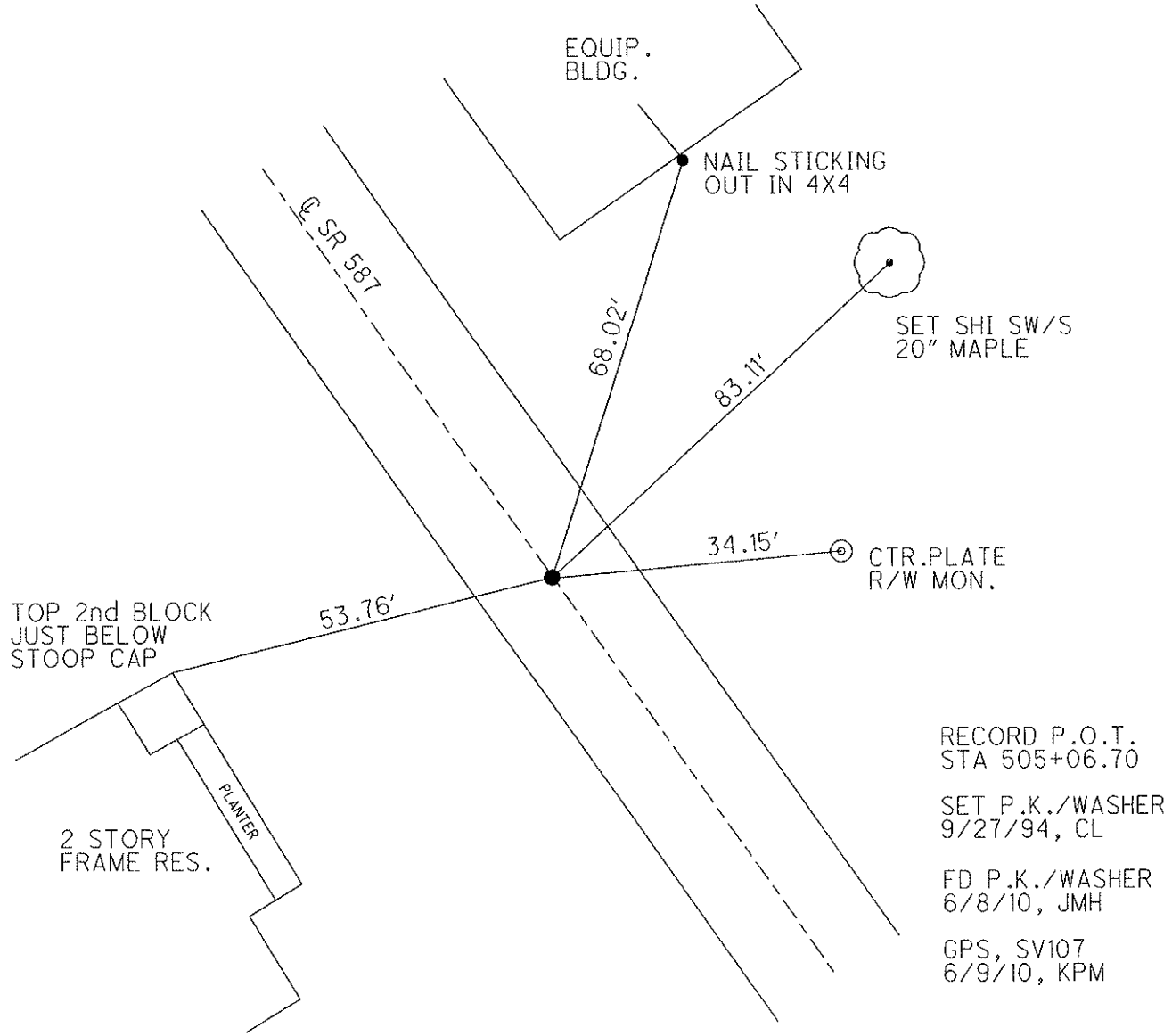
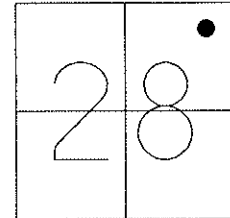
~~ON SURFACE~~ - BELOW 2"

LEFT - CL PAV'T - ~~RIGHT~~ 1'

9.5' TO LT EDGE PAVEMENT

S.L.M. 505+85.49

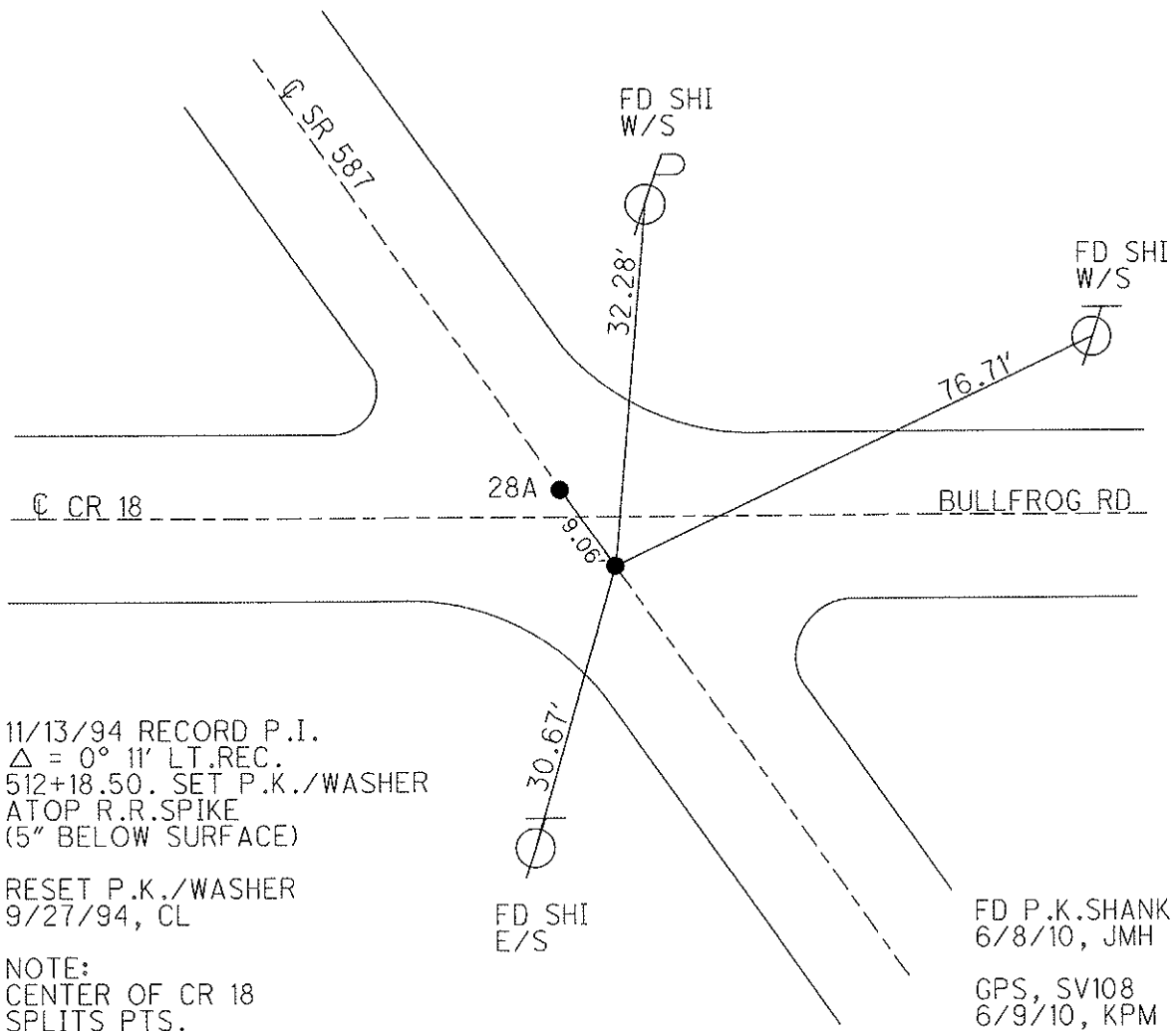
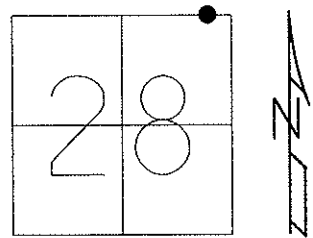
Grid: Northing: 525979.1994 Easting: 1729254.6715



O.D.O.T. DISTRICT 2 SURVEY OFFICE

PERSONNEL	REFERENCE NO. <u>28</u>	SHEET <u>8</u> OF <u>18</u>
NOTES <u>LUMBREZER</u>	DATE <u>6/27/11</u>	ROUTE <u>SR 587</u>
H.C. <u>LUMBREZER</u>	WEATHER <u>GOOD</u>	COUNTY <u>SENECA</u>
R.C. <u>FINGER</u>	TEMP. <u>80°</u>	TOWNSHIP <u>LOUDON</u>
		SECTION <u>28</u>
		T <u>2</u> N R <u>13</u> E

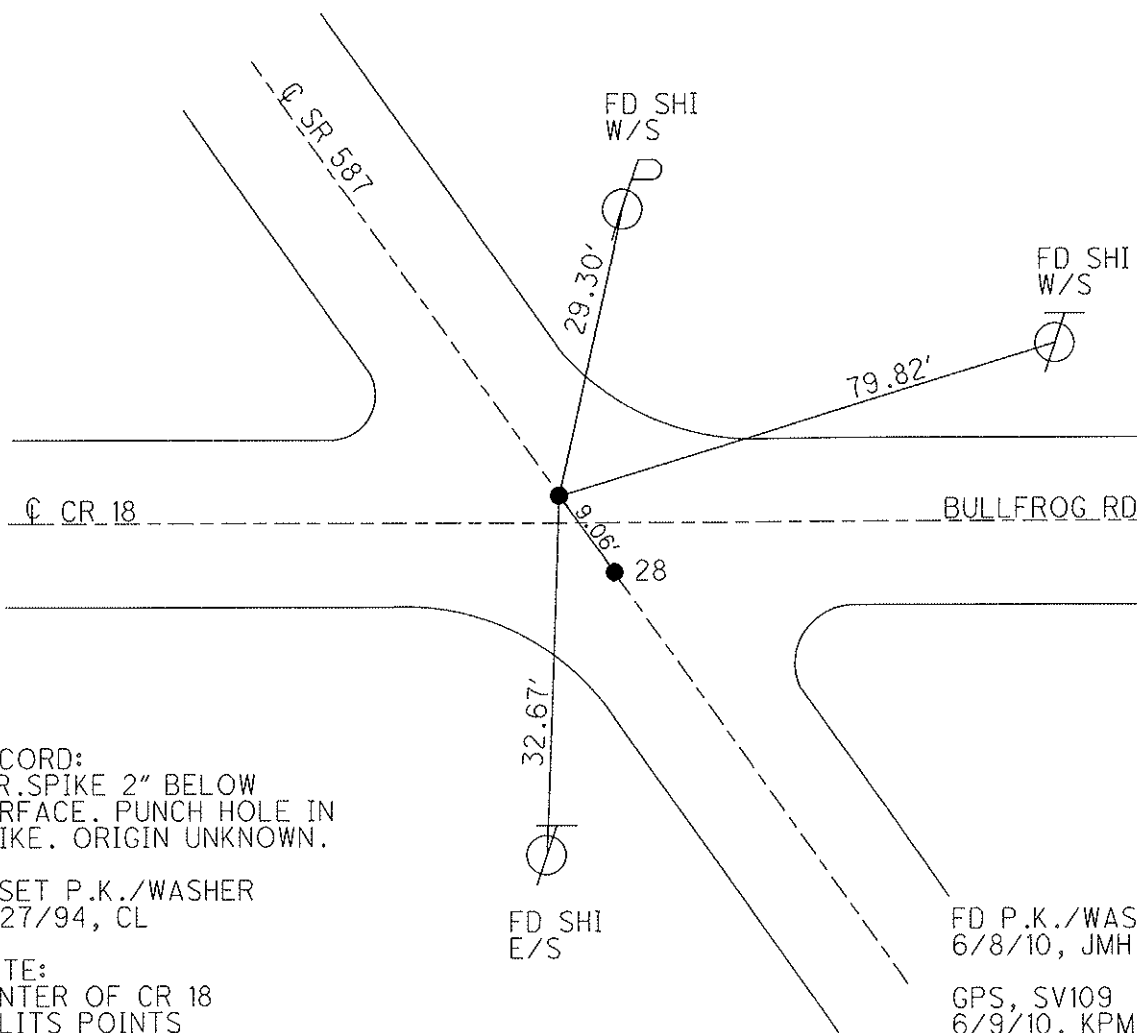
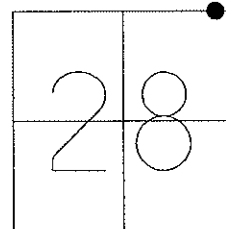
TYPE MONUMENT P.K.SHANK
 ON SURFACE - ~~BELOW~~ ON _____
 LEFT - CL PAV'T - RIGHT ON _____
 _____ TO _____ EDGE PAVEMENT
 S.L.M. 512+87.75
 Grid: Northing: 526569.5023 Easting: 1728874.2694



O.D.O.T. DISTRICT 2 SURVEY OFFICE

PERSONNEL _____ REFERENCE NO. 28 A SHEET 9 OF 18
 NOTES LUMBREZER DATE 6/27/11 ROUTE SR 587
 H.C. LUMBREZER WEATHER GOOD COUNTY SENECA
 R.C. FINGER TEMP. 80° TOWNSHIP LOUDON
 _____ SECTION 28
 _____ T. 2 N R. 13 E

TYPE MONUMENT P.K./WASHER
 ON SURFACE - ~~BELOW~~ ON
 LEFT - ☉ PAV'T - RIGHT ON
 _____ TO _____ EDGE PAVEMENT
 S.L.M. 512+96.84
 Grid: Northing: 526577.1639 Easting: 1728869.3849



RECORD:
 R.R. SPIKE 2" BELOW
 SURFACE. PUNCH HOLE IN
 SPIKE. ORIGIN UNKNOWN.

RESET P.K./WASHER
 9/27/94, CL

NOTE:
 CENTER OF CR 18
 SPLITS POINTS

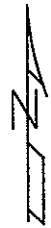
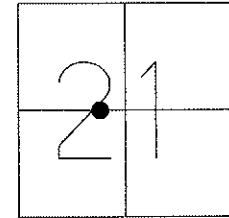
FD P.K./WASHER
 6/8/10, JMH

GPS, SV109
 6/9/10, KPM

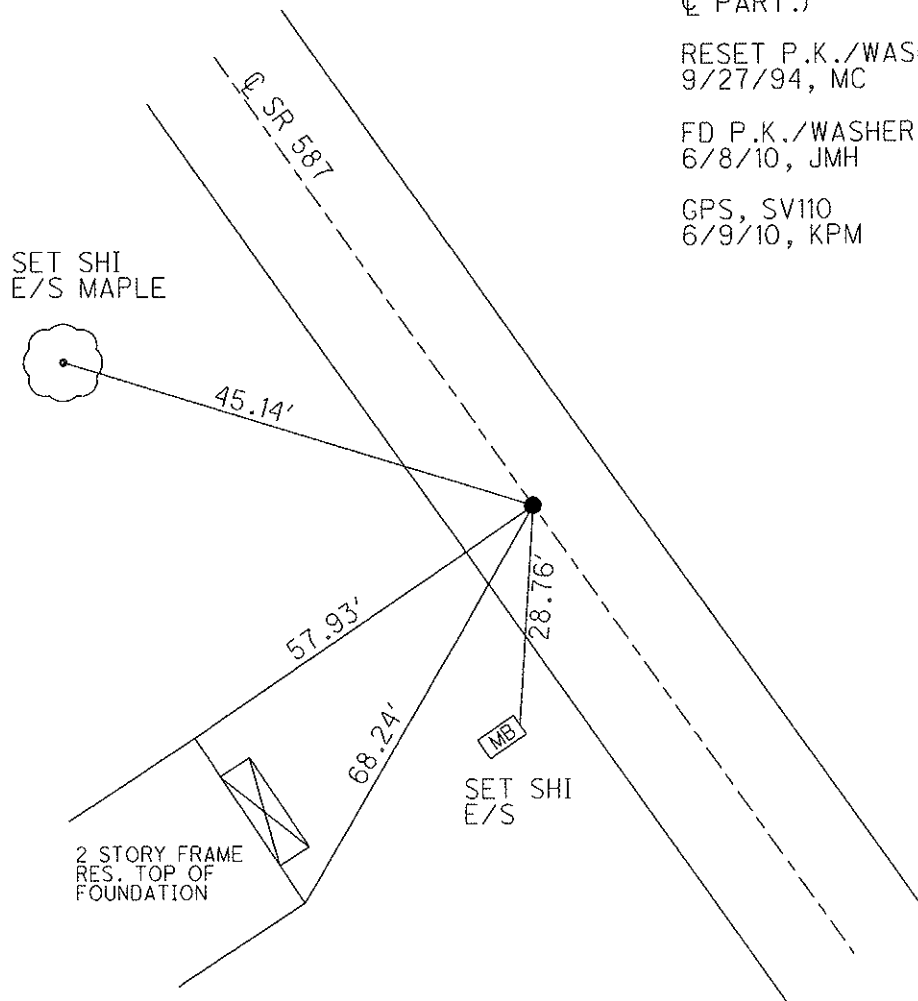
O.D.O.T. DISTRICT 2 SURVEY OFFICE

PERSONNEL	REFERENCE NO. <u>29</u>	SHEET <u>10</u> OF <u>18</u>
NOTES <u>LUMBREZER</u>	DATE <u>6/27/11</u>	ROUTE <u>SR 587</u>
H.C. <u>LUMBREZER</u>	WEATHER <u>GOOD</u>	COUNTY <u>SENECA</u>
R.C. <u>FINGER</u>	TEMP. <u>80°</u>	TOWNSHIP <u>LOUDON</u>
		SECTION <u>21</u>
		T. <u>2</u> N R. <u>13</u> E

TYPE MONUMENT P.K./WASHER
 ON SURFACE - ~~BELOW~~ ON
 LEFT - Q PAV'T - ~~RIGHT~~ 1'
8.5' TO LT EDGE PAVEMENT
 S.L.M. 534+08.60
 Grid: Northing: 528348.4321 Easting: 1727719.5396



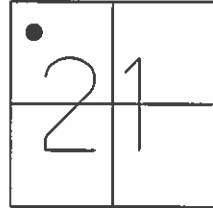
P.O.T. (FIELD BK. S.E. 62, PG.3)
 533+30.40. SET P.K./WASHER
 ATOP MINE SPIKE, ATOP R.R.
 SPIKE (6" BELOW SURFACE - 2' LT
 Q PART.)
 RESET P.K./WASHER
 9/27/94, MC
 FD P.K./WASHER
 6/8/10, JMH
 GPS, SV110
 6/9/10, KPM



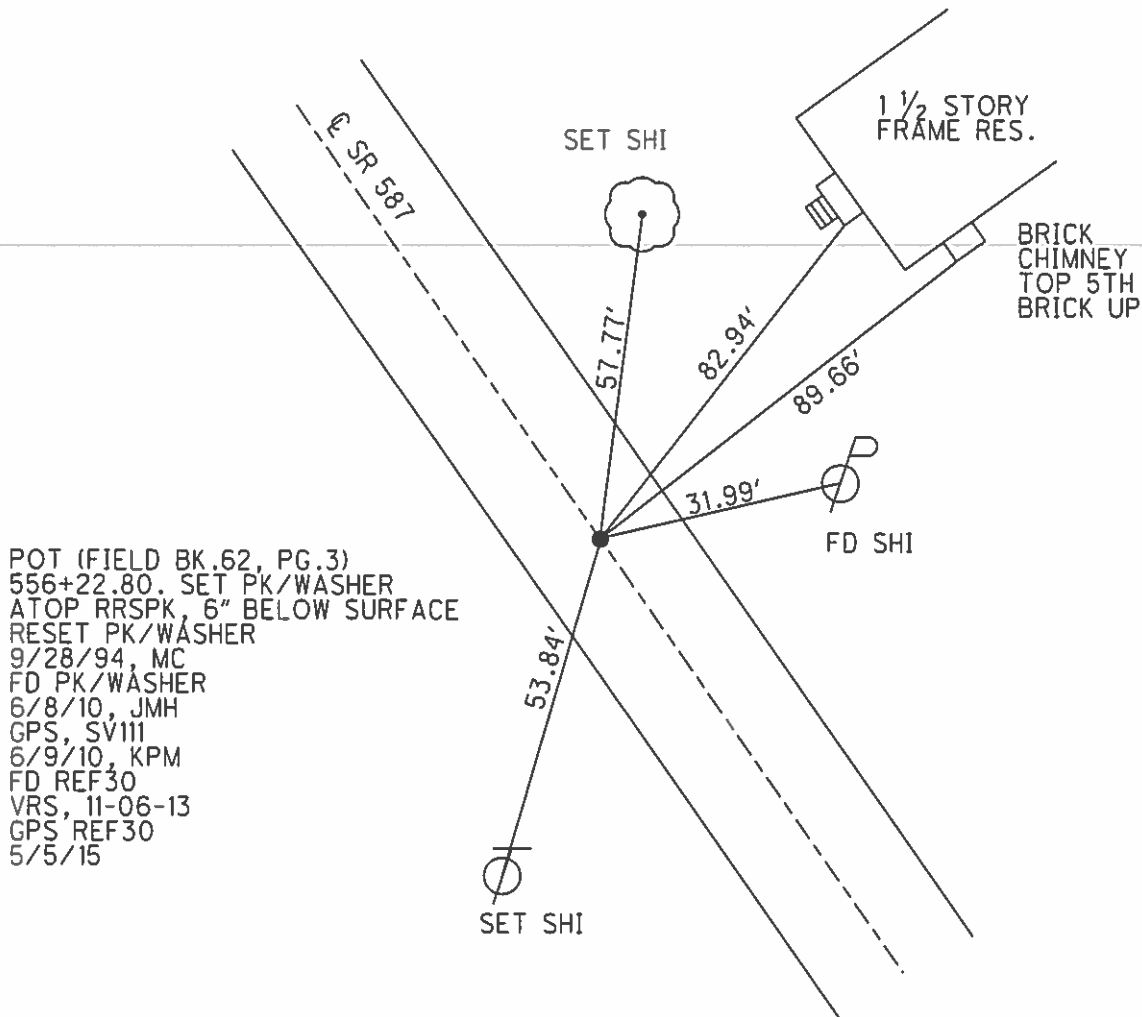
O.D.O.T. DISTRICT 2 SURVEY OFFICE (USE ONLY)

PERSONNEL _____ REFERENCE NO. 30 SHEET 11 OF 18
 NOTES LUMBREZER DATE 6/27/11 ROUTE SR 587
 H.C. LUMBREZER WEATHER GOOD COUNTY SENECA
 R.C. FINGER TEMP. 80° TOWNSHIP LOUDON
 _____ SECTION 21
 _____ T 2 N R 13 E

TYPE MONUMENT _____ P.K./WASHER
 ON SURFACE - ~~BELOW~~ _____ ON
 LEFT - ☉ PAV'T - RIGHT _____ ON
11' TO RT EDGE PAVEMENT
 S.L.M. 556+88.06



GRID: NORTHING: 530272.0824 EASTING: 1726470.9834

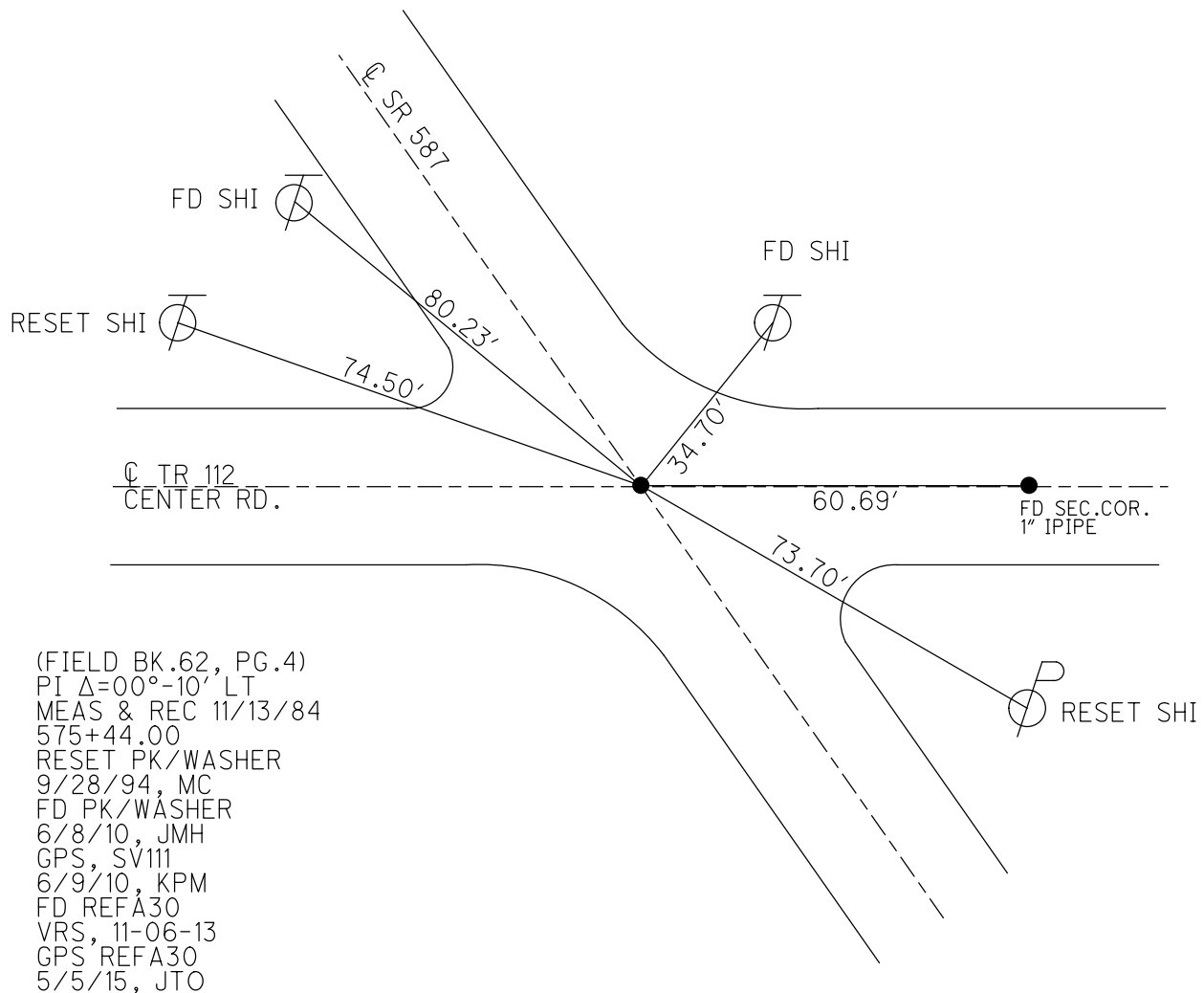
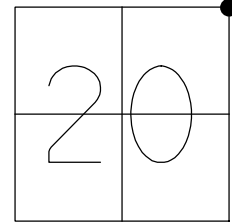


POT (FIELD BK.62, PG.3)
 556+22.80. SET PK/WASHER
 ATOP RRSPK, 6" BELOW SURFACE
 RESET PK/WASHER
 9/28/94, MC
 FD PK/WASHER
 6/8/10, JMH
 GPS, SV111
 6/9/10, KPM
 FD REF30
 VRS, 11-06-13
 GPS REF30
 5/5/15

O.D.O.T. DISTRICT 2 SURVEY OFFICE (USE ONLY)

PERSONNEL	REFERENCE NO.	30 A	SHEET	12	OF	18
NOTES	LUMBREZER	DATE	7/5/11	ROUTE	SR 587	
H.C.	MOSEER	WEATHER	GOOD	COUNTY	SENECA	
R.C.	HARBAUGH	TEMP.	80°	TOWNSHIP	LOUDON	
				SECTION	20	
				T	2	N
				R	13	E

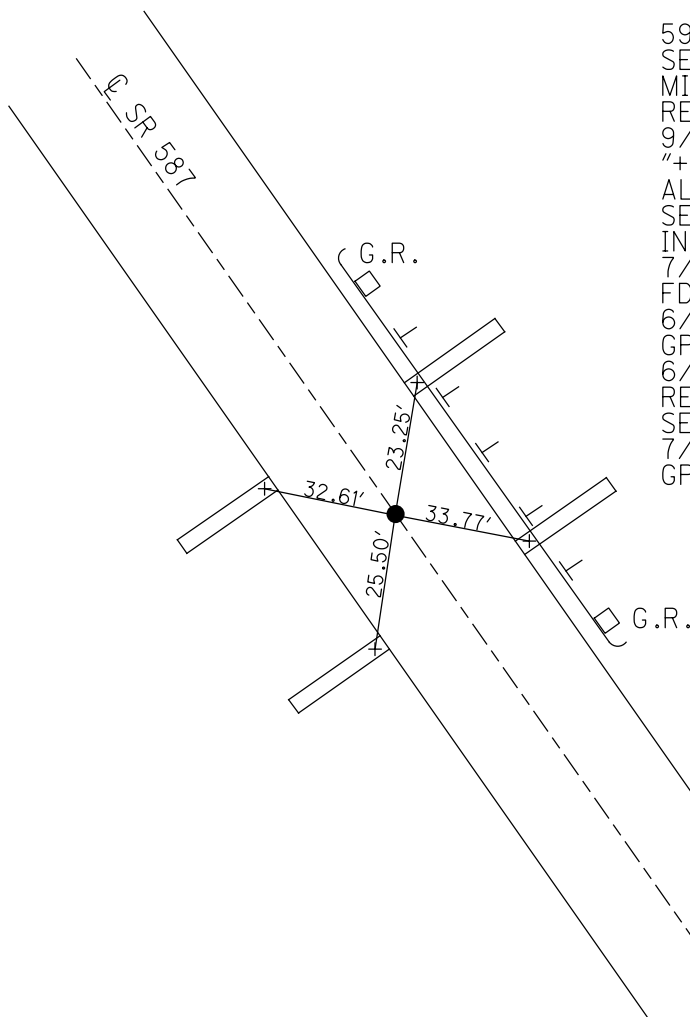
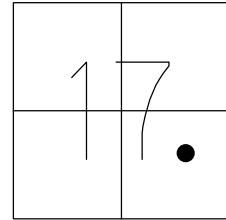
TYPE MONUMENT PK/WASHER
 ON SURFACE - ~~BELOW~~ ON
 LEFT - Q PAV'T - RIGHT ON
TO EDGE PAVEMENT
 S.L.M. 576+04.80
 GRID: NORTHING: 531879.655 EASTING: 1725427.142



O.D.O.T. DISTRICT 2 SURVEY OFFICE (USE ONLY)

PERSONNEL _____ REFERENCE NO. 32 SHEET 13 OF 18
 NOTES WESTFALL DATE 6/13/13 ROUTE SR 587
 H.C. ROUSOS WEATHER SUNNY COUNTY SENECA
 R.C. HOMAN TEMP. 85° TOWNSHIP LOUDON
 _____ SECTION 17
 _____ T 2 N R 13 E

TYPE MONUMENT MAG NAIL
 ON SURFACE - ~~BELOW~~ ON _____
 LEFT - Q PAV'T - ~~RIGHT~~ 0.3'
9.5' TO LT EDGE PAVEMENT
 S.L.M. 597+57.45
 GRID: NORTHING: 533670.389 EASTING: 1724257.672



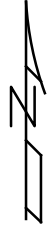
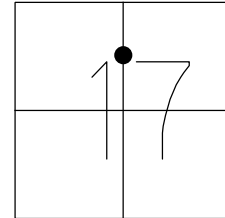
(FIELD BK.S.E.62, PG4)
 PI $\Delta=00^{\circ}18'$ RT
 $\Delta=00^{\circ}30''$ RT MEAS
 596+78.90
 SET PK/WASHER ATOP
 MINE SPIKE
 RESET PK/WASHER
 9/28/94, MC
 "+" CUTS IN ABUTMENTS.
 ALL PLUMBED, 5/4/94, CL
 SET NEW "+" CUTS
 IN NEW ABUT. WALLS
 7/5/11, RJL
 FD P.K./WASHER
 6/8/10, JMH
 GPS, SV113
 6/9/10, KPM
 REF32, 6/13/13
 SET MAG/W
 7/3/14, JLL
 GPS, NEWREF32

O.D.O.T. DISTRICT 2 SURVEY OFFICE (USE ONLY)

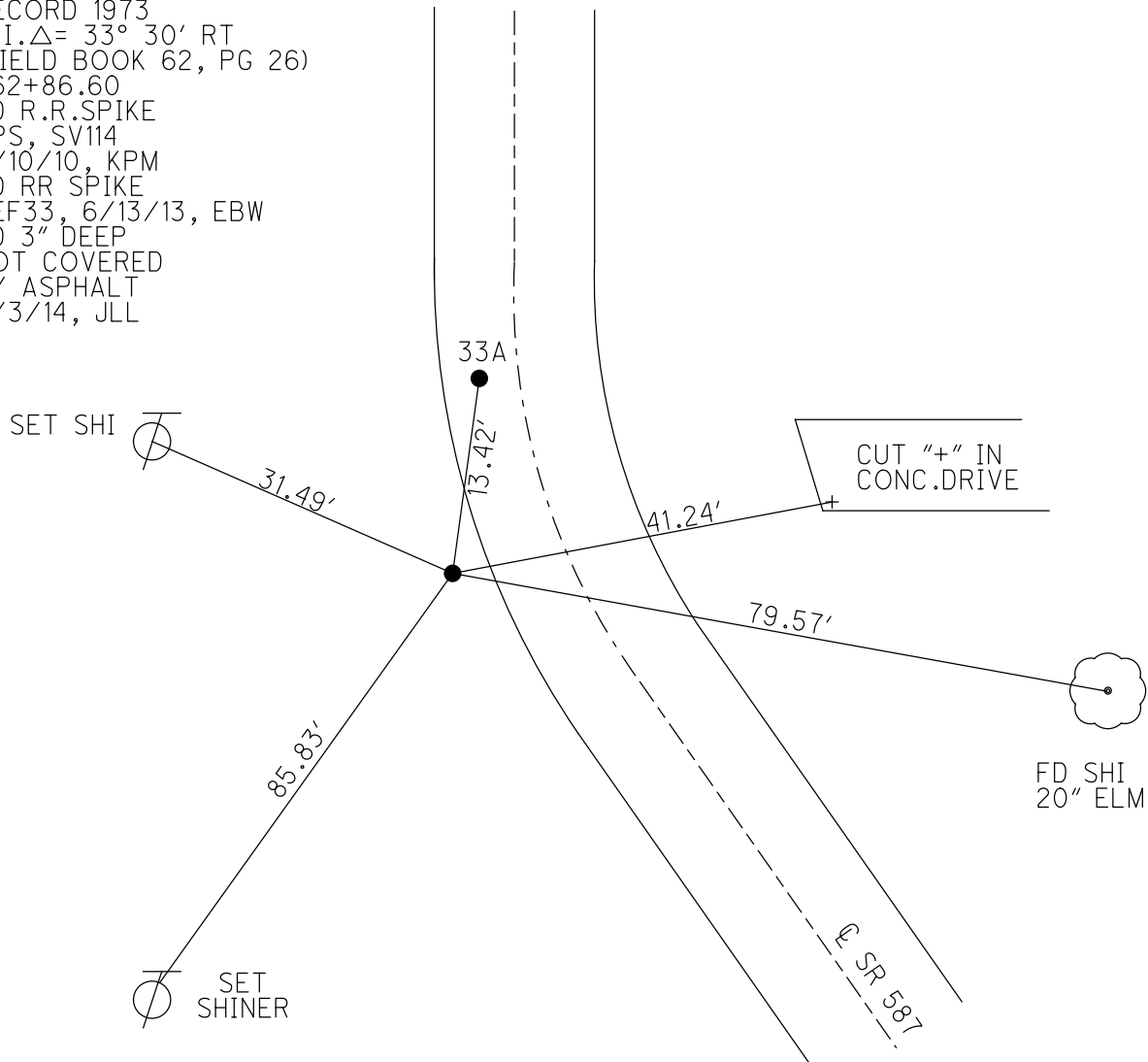
PERSONNEL	REFERENCE NO.	<u>33</u>	SHEET	<u>14</u>	OF	<u>18</u>
NOTES	<u>WESTFALL</u>	DATE	<u>6/13/13</u>	ROUTE	<u>SR 587</u>	
H.C.	<u>ROUSOS</u>	WEATHER	<u>SUNNY</u>	COUNTY	<u>SENECA</u>	
R.C.	<u>HOMAN</u>	TEMP.	<u>85°</u>	TOWNSHIP	<u>LOUDON</u>	
				SECTION	<u>17</u>	
				T	<u>2</u>	R
					<u>N</u>	<u>13</u>
					<u>E</u>	

TYPE MONUMENT R.R.SPIKE
 ON SURFACE - ~~BELOW~~ ON
 LEFT - Q PAV'T - ~~RIGHT~~ 14.5'
4.5' TO LT EDGE PAVEMENT
 S.L.M. 623+66.55

GRID: NORTHING: 535857.599 EASTING: 1722835.074



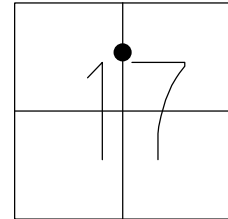
RECORD 1973
 P.I. Δ = 33° 30' RT
 (FIELD BOOK 62, PG 26)
 662+86.60
 FD R.R.SPIKE
 GPS, SV114
 6/10/10, KPM
 FD RR SPIKE
 REF33, 6/13/13, EBW
 FD 3" DEEP
 NOT COVERED
 BY ASPHALT
 7/3/14, JLL



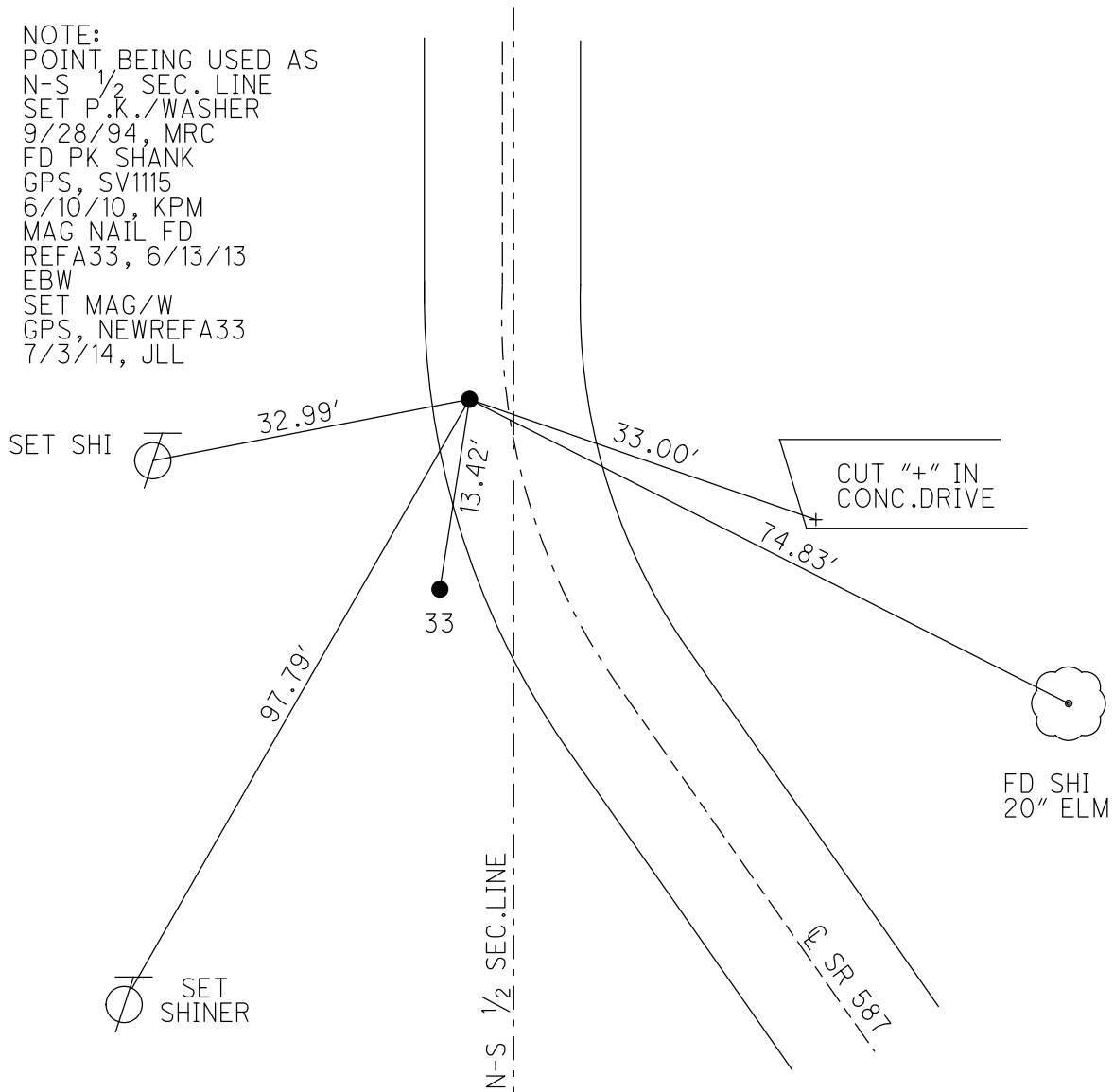
O.D.O.T. DISTRICT 2 SURVEY OFFICE (USE ONLY)

PERSONNEL	REFERENCE NO.	<u>33 A</u>	SHEET	<u>15</u>	OF	<u>18</u>
NOTES	<u>WESTFALL</u>	DATE	<u>6/13/13</u>	ROUTE	<u>SR 587</u>	
H.C.	<u>ROUSOS</u>	WEATHER	<u>SUNNY</u>	COUNTY	<u>SENECA</u>	
R.C.	<u>HOMAN</u>	TEMP.	<u>85°</u>	TOWNSHIP	<u>LOUDON</u>	
				SECTION	<u>17</u>	
				T. <u>2</u> N	R. <u>13</u> E	

TYPE MONUMENT P.K. SHANK
 ON SURFACE - ~~BELOW~~ ON
 LEFT - C PAV'T - ~~RIGHT~~ 7'
TO EDGE PAVEMENT
 S.L.M. 623+79.46
 GRID: NORTHING: 535870.385 EASTING: 1722839.193



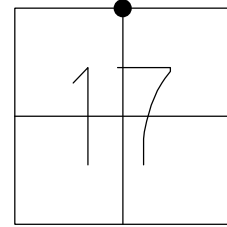
NOTE:
 POINT BEING USED AS
 N-S 1/2 SEC. LINE
 SET P.K./WASHER
 9/28/94, MRC
 FD PK SHANK
 GPS, SV1115
 6/10/10, KPM
 MAG NAIL FD
 REFA33, 6/13/13
 EBW
 SET MAG/W
 GPS, NEWREFA33
 7/3/14, JLL



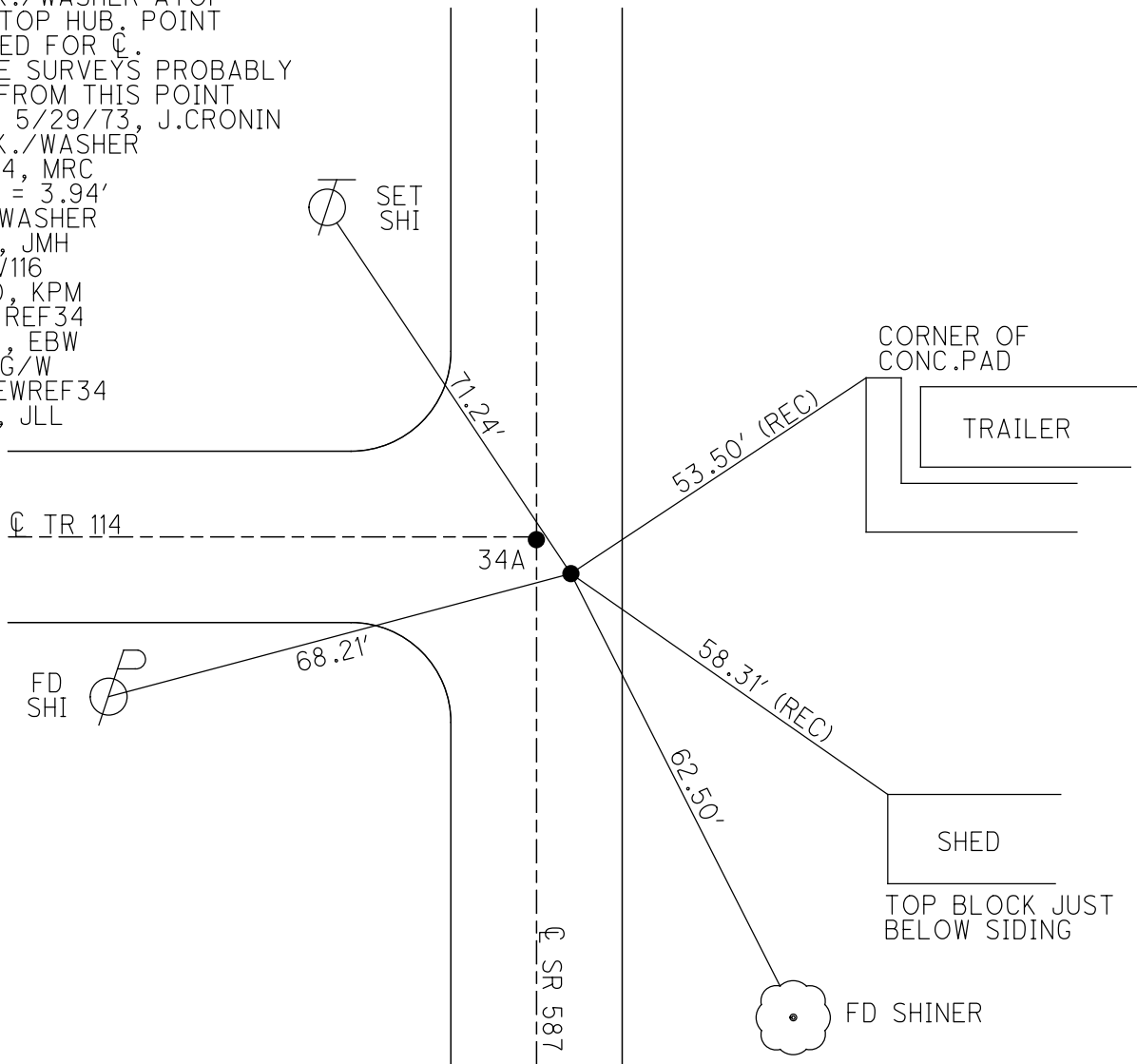
O.D.O.T. DISTRICT 2 SURVEY OFFICE (USE ONLY)

PERSONNEL	REFERENCE NO.	34	SHEET	16	OF	18
NOTES	WESTFALL	DATE	6/13/13	ROUTE	SR 587	
H.C.	ROUSOS	WEATHER	SUNNY	COUNTY	SENECA	
R.C.	HOMAN	TEMP.	85°	TOWNSHIP	LOUDON	
				SECTION	17	
				T	2	N
				R	13	E

TYPE MONUMENT P.K./WASHER
 ON SURFACE - ~~BELOW~~ ON
 LEFT - ℄ PAV'T - ~~RIGHT~~ 2.5'
11.5' TO RT EDGE PAVEMENT
 S.L.M. 637+01.46
 GRID: NORTHING: 537192.380 EASTING: 1722846.124



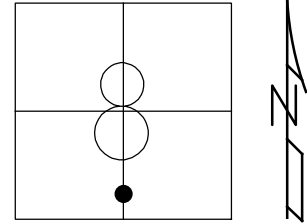
RECORD: 5/29/73
 SET P.K./WASHER ATOP
 IPIN, ATOP HUB. POINT
 WAS USED FOR ℄.
 PRIVATE SURVEYS PROBABLY
 TAKEN FROM THIS POINT
 BEFORE 5/29/73, J.CRONIN
 SET P.K./WASHER
 9/28/94, MRC
 34-34A = 3.94'
 FD PK/WASHER
 6/8/10, JMH
 GPS, SV116
 6/10/10, KPM
 FD PK, REF34
 6/13/13, EBW
 SET MAG/W
 GPS, NEWREF34
 7/3/14, JLL



O.D.O.T. DISTRICT 2 SURVEY OFFICE (USE ONLY)

PERSONNEL	REFERENCE NO.	<u>34 B</u>	SHEET	<u>18</u>	OF	<u>18</u>
NOTES	WESTFALL	DATE	<u>6/13/13</u>	ROUTE	<u>SR 587</u>	
H.C.	ROUSOS	WEATHER	<u>SUNNY</u>	COUNTY	<u>SENECA</u>	
R.C.	HOMAN	TEMP.	<u>85°</u>	TOWNSHIP	<u>LOUDON</u>	
				SECTION	<u>8</u>	
				T	<u>2</u>	N
				R	<u>13</u>	E

TYPE MONUMENT _____ RR SPIKE _____
~~ON SURFACE~~ - BELOW _____ 3"
 LEFT - \odot PAV'T - ~~RIGHT~~ _____ 5.5'
 _____ 4' TO LT EDGE PAVEMENT
 S.L.M. _____ 644+23.62
 GRID: NORTHING: 537914.496 EASTING: 1722850.978



FD P.K./WASHER OVER
 LG.R.R.SPIKE.
 RESET P.K./WASHER
 9/28/94, MRC
 FD P.K./WASHER
 6/8/10, JMH
 GPS, SV1118
 6/10/10, KPM
 FD RR SPIKE 3" DEEP
 REFB34, 6/13/13, EBW
 SET MAG/W
 GPS, NEWREFB34
 7/3/14, JLL

