

O.D.O.T. DISTRICT 2 SURVEY OFFICE (USE ONLY)

PERSONNEL

REFERENCE NO. 0

SHEET 1 OF 30

NOTES FINGER
 H.C. MOSE
 R.C. HARBAUGH

DATE 5/24/11
 WEATHER OVERCAST
 TEMP. 65°

ROUTE SR 587
 COUNTY SENECA
 TOWNSHIP SENECA
 SECTION 33
 T 1 N R 14 E

DWG BY NIESE PID PAVE TRAIN

TYPE MONUMENT MAG/WASHER

ON SURFACE - ~~BELOW~~ ON

OFFSET 5.3' TO RT EDGE PAVEMENT

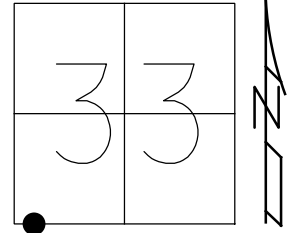
STATION: 0+00

HORZ. DATUM: _____

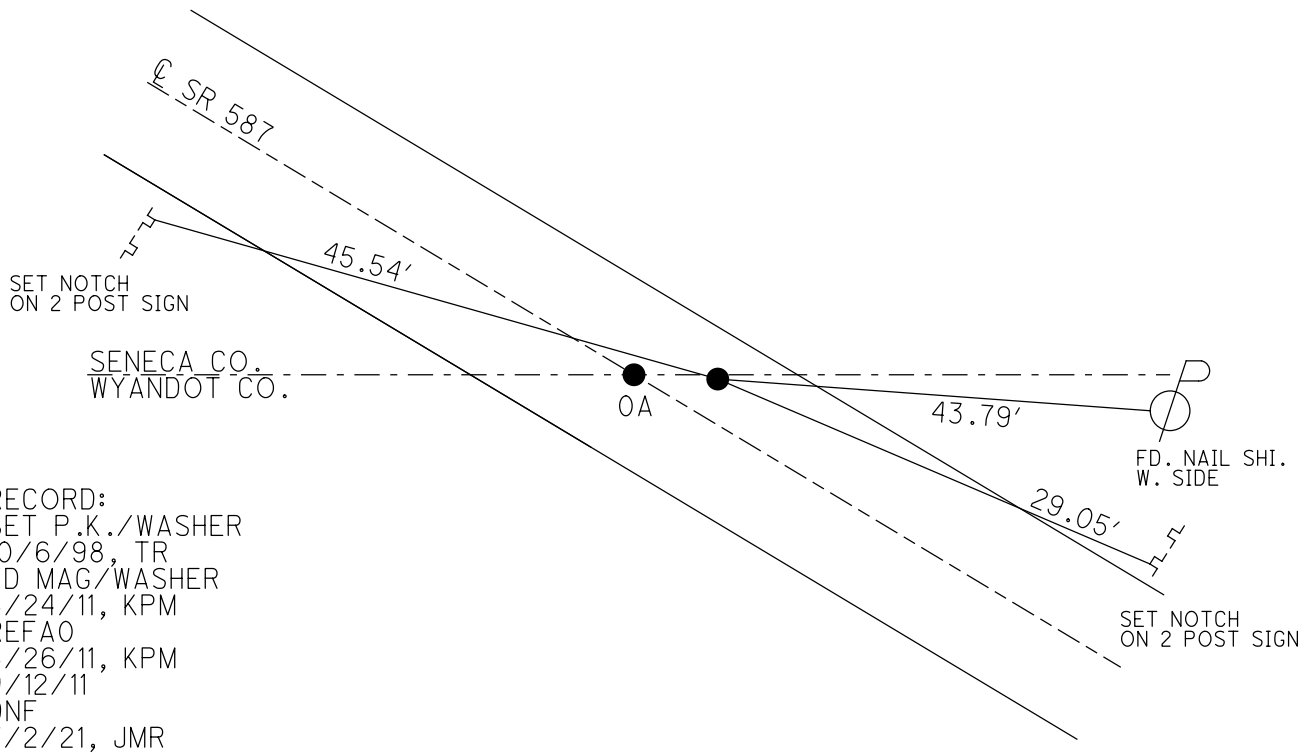
GEOID: _____

GRID: NORTHING: 484046.557

EASTING: 1757347.233



DIST. BETWEEN
 0-0A=9.82'



RECORD:
 SET P.K./WASHER
 10/6/98, TR
 FD MAG/WASHER
 5/24/11, KPM
 REFAO
 5/26/11, KPM
 9/12/11
 DNF
 7/2/21, JMR

O.D.O.T. DISTRICT 2 SURVEY OFFICE

PERSONNEL

REFERENCE NO. 0

SHEET 1 OF 30

NOTES FINGER _____

DATE 5-24-11

ROUTE SR 587

H.C. MOSE

WEATHER OVERCAST

COUNTY SENECA

R.C. HARBAUGH

TEMP. 65°

TOWNSHIP SENECA

SECTION 33

T 1 N R 14 E

TYPE MONUMENT MAG/WASHER

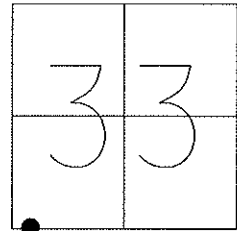
ON SURFACE - ~~BELOW~~ ON _____

~~LEFT = C~~ PAV'T - RIGHT 5.0'

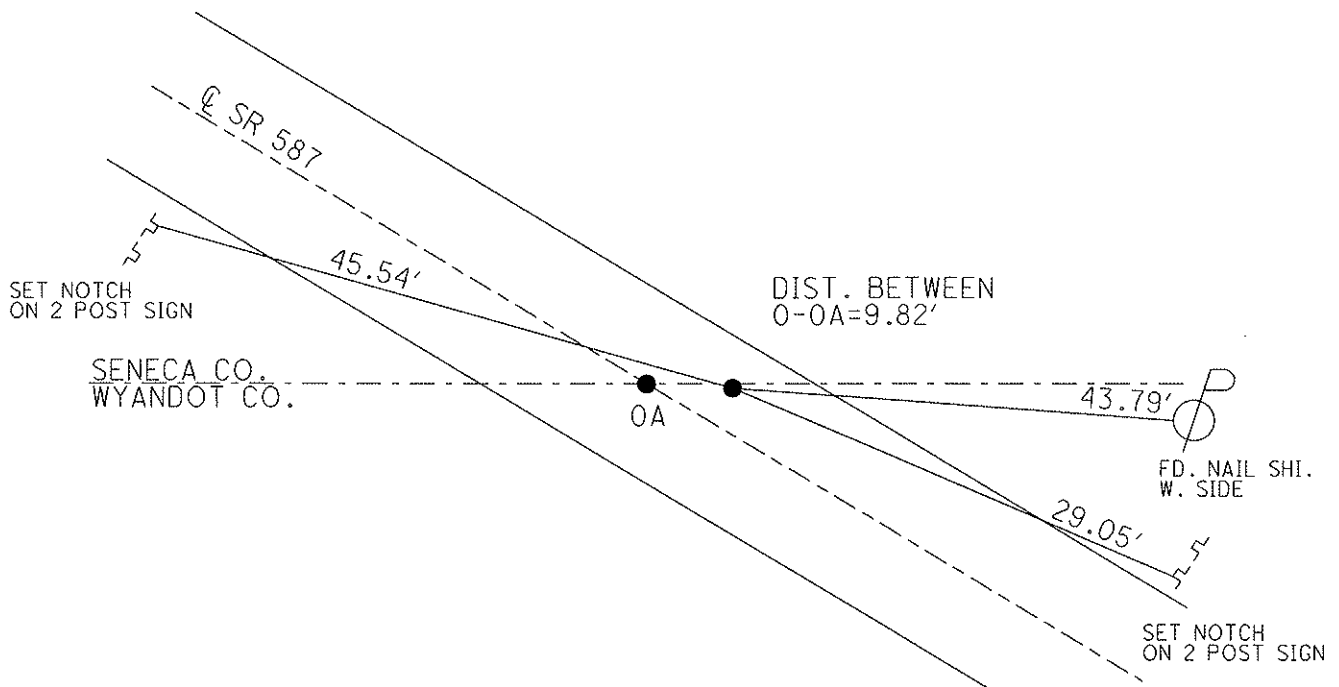
5.3' TORT. EDGE PAVEMENT

S.L.M. 0+00

Grid: Northing: 484046.557 Easting: 1757347.233



Preventative Maintenance
Chip & Seal
Existing Point Uncovered
Date: 9-12-2011



RESET PK/WASHER
10-6-98, T.R.

FD MAG/WASHER
5/24/11, KPM

GPS, REF A0
5/26/11, KPM

O.D.O.T. DISTRICT 2 SURVEY OFFICE

PERSONNEL

REFERENCE NO. 0

SHEET 1 OF 24

NOTES CANTERBURY

H.C. Rousos

R.C. LOEHRKE

DATE 5/4/98

WEATHER OVERCAST

TEMP. +63°F

ROUTE 587

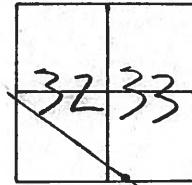
COUNTY SENECA

TOWNSHIP SENECA

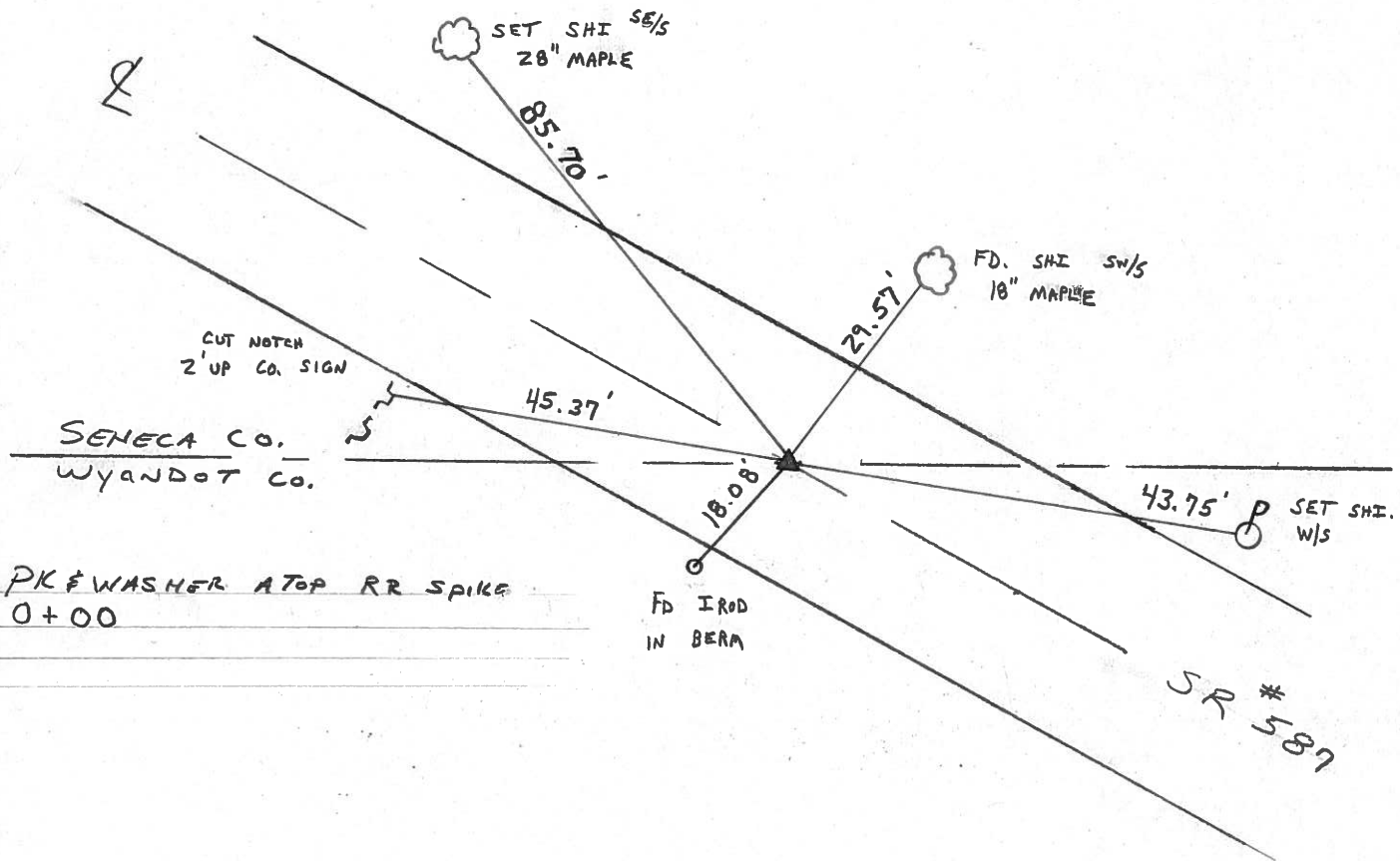
SECTION 33

T.L. & R. 14 E

TYPE MONUMENT P.K. & WASHER ATOP RR. SPK.
~~ON SURFACE - BELOW LG. RR. SPK. 3" DOWN~~
~~LEFT - & PAV'T. - RIGHT 4.9' RT & PAVT.~~
~~6.9' TO RT EDGE PAVEMENT~~
 S.L.M. 0.00



RESET P.K. WASHER
 10-6-98
 T.R.



Resurfaced 1998

O.D.O.T. DISTRICT 2 SURVEY OFFICE

PERSONNEL

REFERENCE NO. 0

SHEET 1 OF

NOTES CRONIN

H.C. BARBOUR

R.C. GEYMAN

DATE 8/20/85

WEATHER SUNNY

TEMP. 65°

ROUTE # 587

COUNTY SENECA

TOWNSHIP SENECA

SECTION 32

T 1 N R 14 E

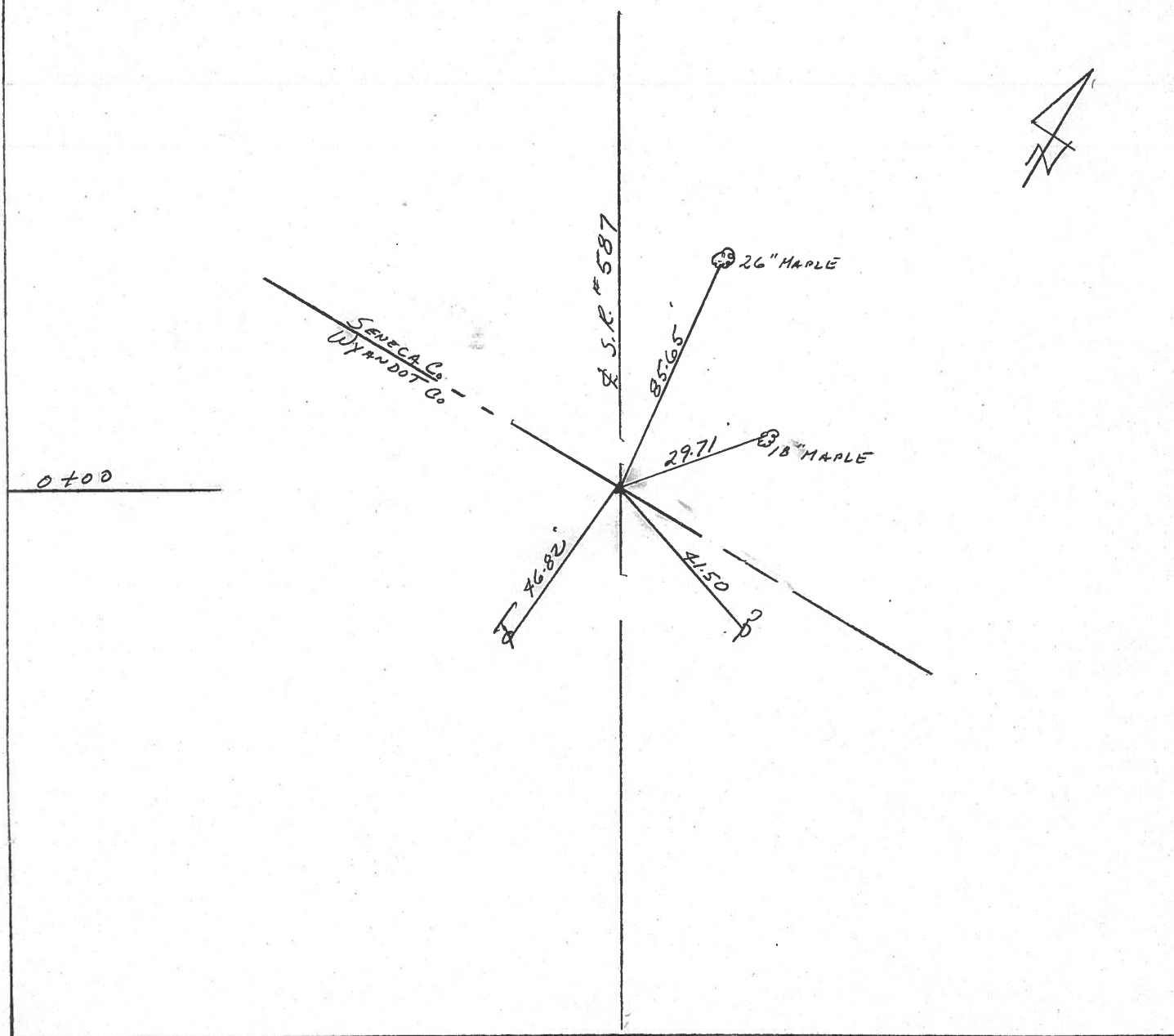
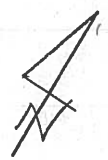
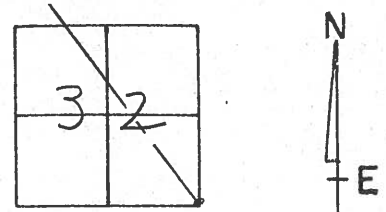
TYPE MONUMENT P.K. & WASHER AT TOP R.R. SPIK.

ON SURFACE - BELOW ON SURFACE

LEFT - ☉ PAV'T. - RIGHT 5' RT. & PAVT

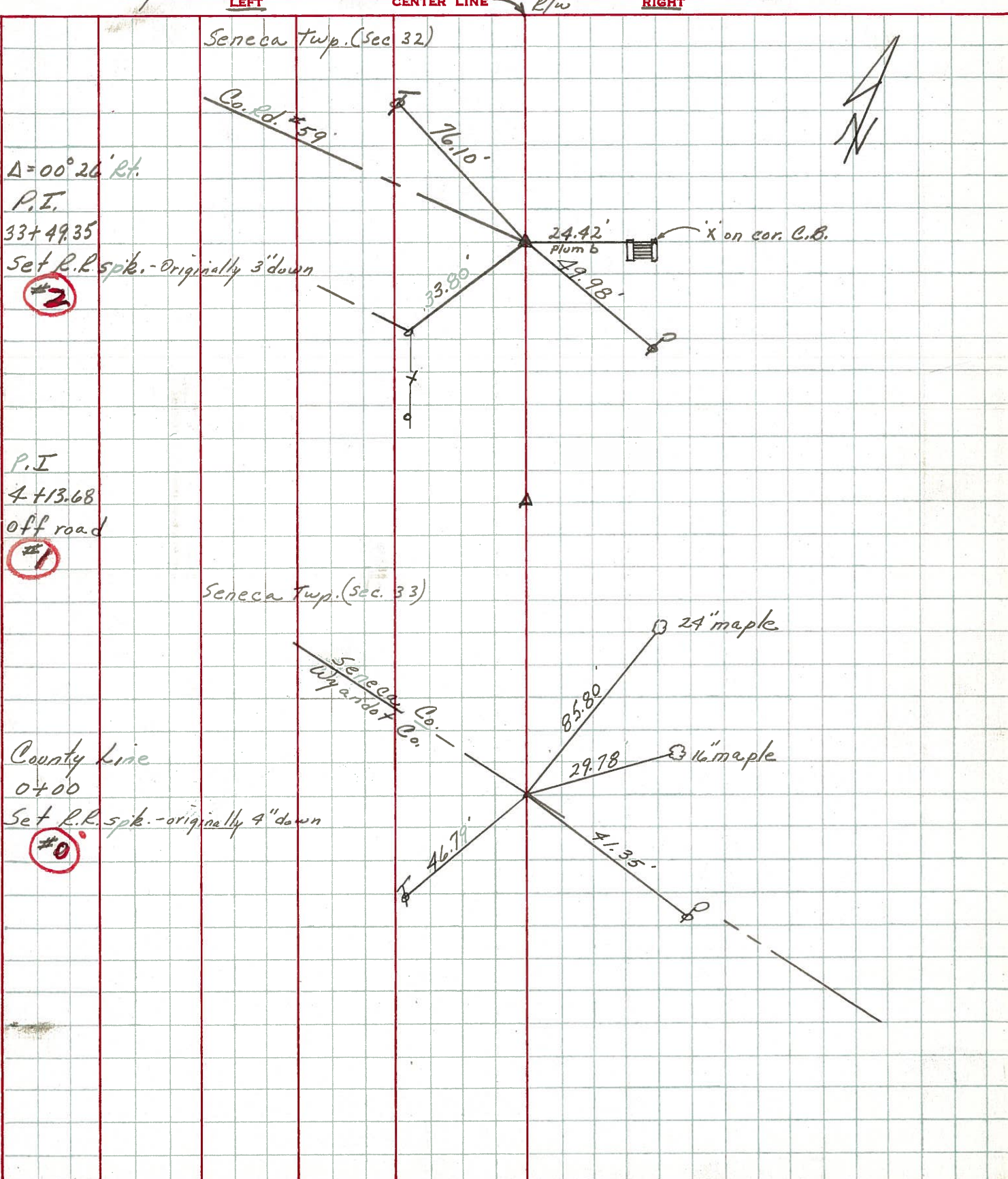
 TO EDGE PAVEMENT

S.L.M. 0



PERSONNEL	TITLE	PERSONNEL	TITLE	COUNTY	Seneca	DATE	9/20/72
Ash - Vac.				S. R.	#587	WEATHER	Sunny
Cronin				SEC.		TEMP.	70°
Ripple							
Anderson							

DESCRIPTION Wyandot-Seneca Co. Line Northwest JOB NO. _____



PERSONNEL	TITLE	PERSONNEL	TITLE	COUNTY	Seneca	DATE	10-31-69
Schneider				S. R.	587	WEATHER	Fair
Mosser				SEC.		TEMP.	50°
Barbour				DESCRIPTION	Wyandot Co. Line to New Riegel		JOB NO.
Potts					LEFT	CENTER LINE	RIGHT

④

65+42
 R.R. spk. 1 1/2" down
 on & R/W
 $\Delta = 0^\circ 30' \text{ Lt.}$
 8714

③

52+74
 R.R. spk. 1 1/2" down
 $\Delta = 0^\circ 13' \text{ Lt}$
 Reset P.K. Nail
 8713

②

33+49.35
 R.R. spk. 1 1/2" down
 on & R/W
 $\Delta = 0^\circ 26' \text{ Rt.}$
 8712

①

4+13.68
 did not find
 8711

①

0+00
 R.R. spk.
 2 1/2" down
 $\Delta = 0^\circ 0' 0''$
 set P.K. Nail
 8710

