

O.D.O.T. DISTRICT 2 SURVEY OFFICE (USE ONLY)

PERSONNEL

REFERENCE NO. 0 A

SHEET 2 OF 30

NOTES FINGER

DATE 5/24/11

ROUTE SR 587

H.C. MOSE

WEATHER OVERCAST

COUNTY SENECA

R.C. HARBAUGH

TEMP. 65°

TOWNSHIP SENECA

SECTION 33

DWG BY NIESE

PID PAVE TRAIN

T 1 N R 14 E

TYPE MONUMENT MAG/WASHER

ON SURFACE - ~~BELOW~~ ON

OFFSET 0 PAVEMENT ON LT : RT

10.3' TO RT EDGE PAVEMENT

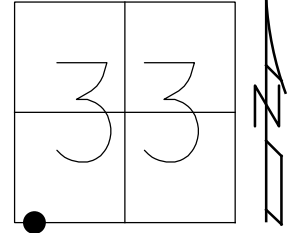
STATION: 0+00

HORZ. DATUM: \_\_\_\_\_

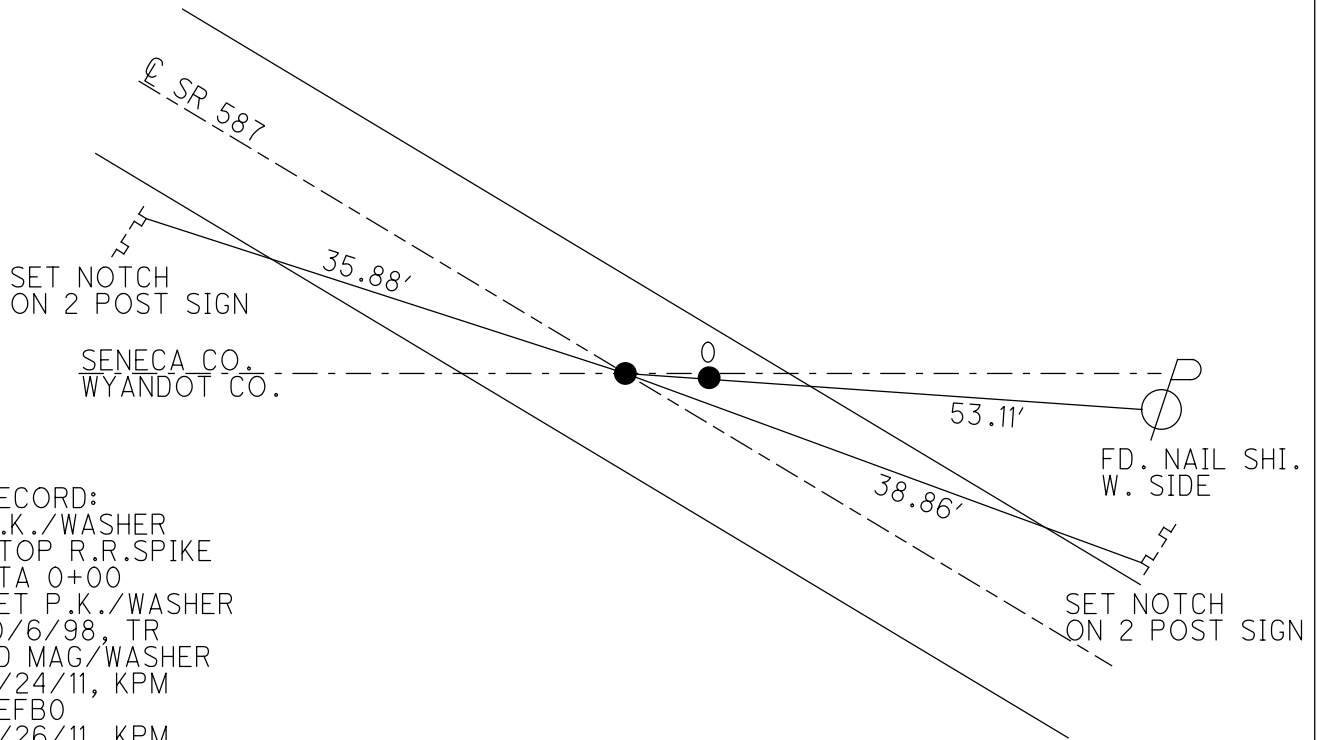
GEOID: \_\_\_\_\_

GRID: NORTHING: 484046.455

EASTING: 1757337.408



DIST. BETWEEN  
0-0A=9.82'



RECORD:  
P.K./WASHER  
ATOP R.R.SPIKE  
STA 0+00  
SET P.K./WASHER  
10/6/98, TR  
FD MAG/WASHER  
5/24/11, KPM  
REFBO  
5/26/11, KPM  
9/12/11  
7/2/21, JMR

O.D.O.T. DISTRICT 2 SURVEY OFFICE

PERSONNEL \_\_\_\_\_

REFERENCE NO. 0 A

SHEET 2 OF 30

NOTES FINGER \_\_\_\_\_

DATE 5-24-11

ROUTE SR 587

H.C. MOSER

WEATHER OVERCAST

COUNTY SENECA

R.C. HARBAUGH

TEMP. 65°

TOWNSHIP SENECA

SECTION 33

T 1 N R 14 E

TYPE MONUMENT MAG/WASHER

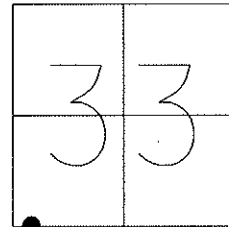
ON SURFACE - ~~BELOW~~ ON \_\_\_\_\_

~~LEFT~~ - Q PAV'T - ~~RIGHT~~ ON \_\_\_\_\_

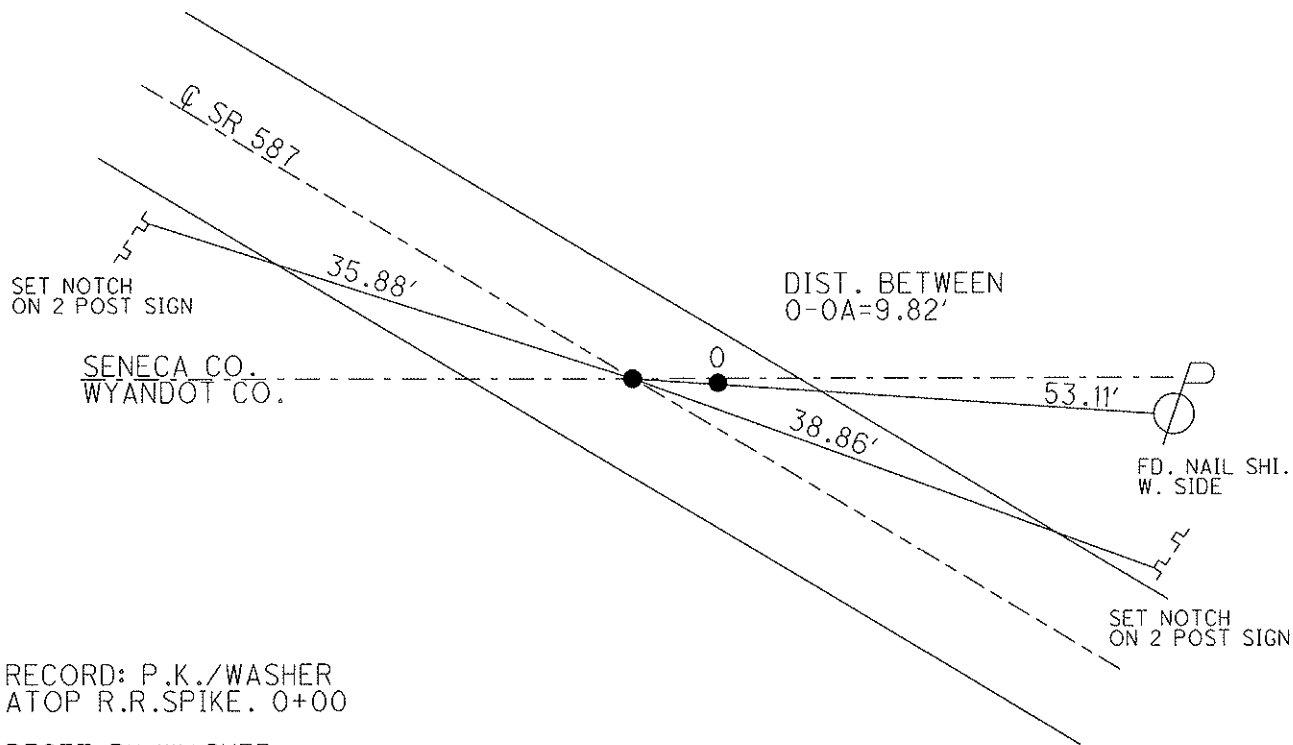
10.3' TO RT. EDGE PAVEMENT

S.L.M. 0+00

Grid: Northing: 484046.455 Easting: 1757337.408



Preventative Maintenance  
Chip & Seal  
Existing Point Uncovered  
Date: 9-12-2011



RECORD: P.K./WASHER  
ATOP R.R.SPIKE. 0+00

RESET PK/WASHER  
10-6-98, T.R.

FD MAG/WASHER  
5/24/11, KPM

GPS, REF B0  
5/26/11, KPM