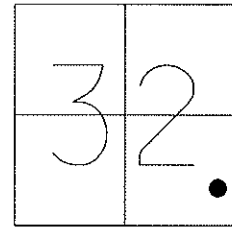


O.D.O.T. DISTRICT 2 SURVEY OFFICE

PERSONNEL \_\_\_\_\_ REFERENCE NO. 1 SHEET 3 OF 30  
NOTES FINGER DATE 5-24-11 ROUTE SR 587  
H.C. MOSE WEATHER OVERCAST COUNTY SENECA  
R.C. HARBAUGH TEMP. 65° TOWNSHIP SENECA  
SECTION 32  
T 1 N R 14 E

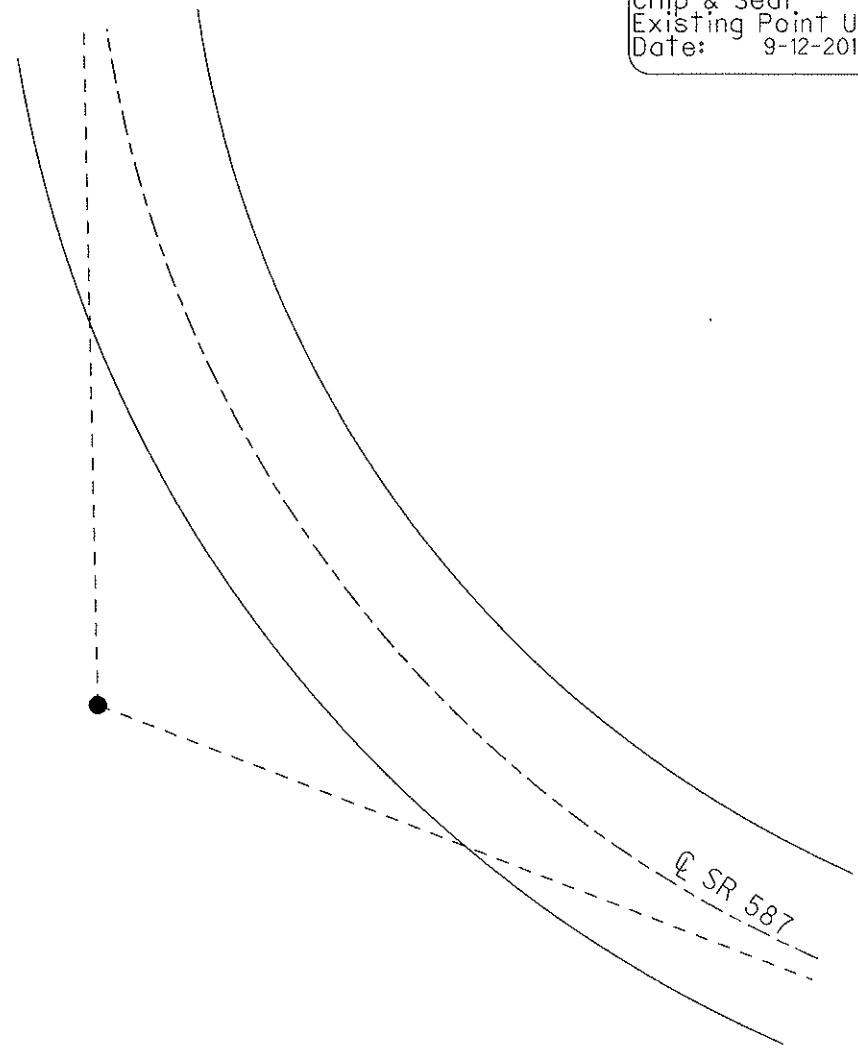
TYPE MONUMENT D.N.F.  
ON SURFACE - BELOW \_\_\_\_\_  
LEFT - Q PAV'T - RIGHT \_\_\_\_\_  
\_\_\_\_\_ TO \_\_\_\_\_ EDGE PAVEMENT  
S.L.M. 4+13.68  
Grid: Northing: \_\_\_\_\_ Easting: \_\_\_\_\_



DID NOT FIND  
PI STA. 4+13.68  
NO TIES  
5-4-98

DID NOT FIND  
5-24-11  
KPM

Preventative Maintenance  
Chip & Seal  
Existing Point Uncovered  
Date: 9-12-2011



O.D.O.T. DISTRICT 2 SURVEY OFFICE

PERSONNEL

REFERENCE NO. 1

SHEET 2 OF 24

NOTES CANTERBURY

H.C. Rousos

R.C. LOEHRKE

DATE 5-4-98

WEATHER OVERCAST

TEMP. + 63° F

ROUTE #587

COUNTY SENECA

TOWNSHIP SENECA

SECTION 32

T 1 N R 14 E

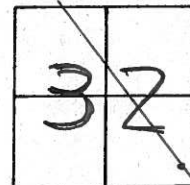
TYPE MONUMENT ?

ON SURFACE - BELOW                     

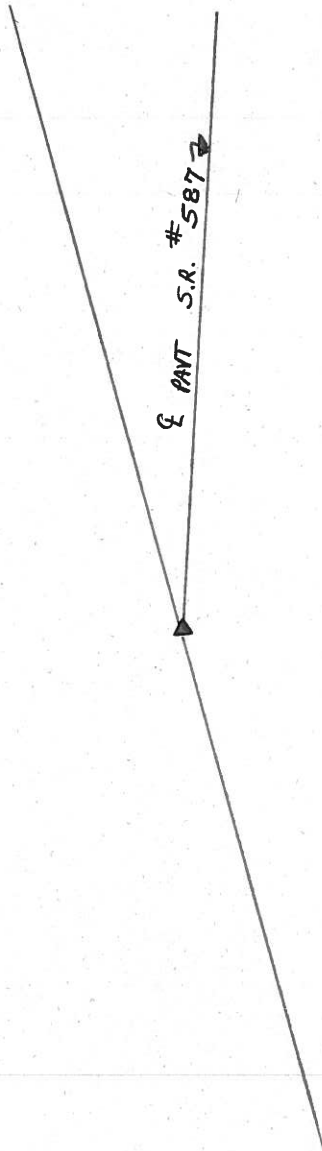
LEFT- & PAV'T. - RIGHT ? LT OF PAVT

? TO RT EDGE PAVEMENT

S.L.M. .078 ±



DID NOT FIND



P.I.

4+13.68

No TIES

O.D.O.T. DISTRICT 2 SURVEY OFFICE

PERSONNEL

REFERENCE NO. 7

SHEET 2 OF     

NOTES CRONIN

H.C. BARBOUR

R.C. GEYMAN

DATE 8/20/85

WEATHER SUNNY

TEMP. 65°

ROUTE # 587

COUNTY SENECA

TOWNSHIP SENECA

SECTION 32

T. U. R. I. E

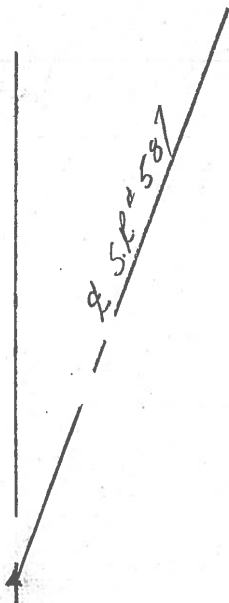
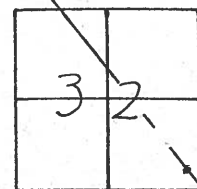
TYPE MONUMENT ?

ON SURFACE - BELOW     

LEFT - & PAV'T. - RIGHT ? Lt. of PAVMT

? TO Rt. EDGE PAVEMENT

S.L.M. .078 ±



P.E  
4+13.68  
NO TIES

PERSONNEL	TITLE	PERSONNEL	TITLE
Ash - Vac.			
Cronin			
Ripple			
Anderson			

COUNTY Seneca

DATE 9/20/72

S. R. #587

WEATHER sunny

SEC.

TEMP 70°

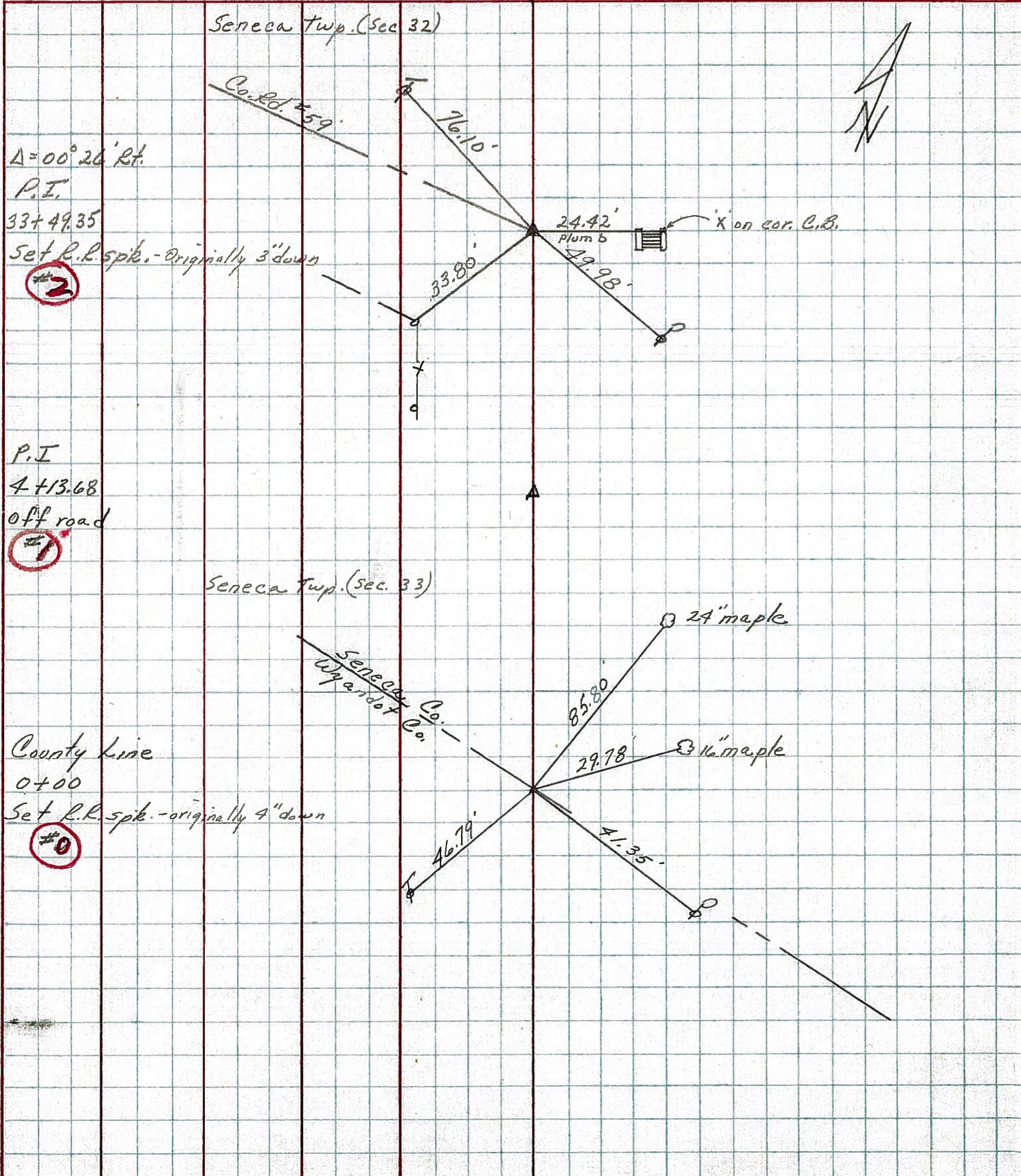
DESCRIPTION Wyandot-Seneca Co. Line Northwest

JOB NO.

LEFT

CENTER LINE R/W

RIGHT



$\Delta = 00^\circ 26' \text{ Rt.}$

P.I.

33+49.35

Set R.R. spike - originally 3" down

#2

P.I.

4+13.68

off road

#1

Seneca Twp. (Sec. 33)

County line

0+00

Set R.R. spike - originally 4" down

#0

PERSONNEL	TITLE	PERSONNEL	TITLE
Schneider			
Mosser			
Barbour			
Potts			

COUNTY Seneca DATE 10-31-69  
 S. R. 587 WEATHER Fair  
 SEC. \_\_\_\_\_ TEMP 50°

DESCRIPTION Wyandot Co. Line to New Riegel JOB NO. \_\_\_\_\_  
 LEFT CENTER LINE RIGHT

④

65+72  
 R.R. spk. 1/2" down  
 on & R/W  
 $\Delta = 0^\circ 30' \text{ Lt.}$   
 8714

③

52+74  
 R.R. spk. 1/2" down  
 $\Delta = 0^\circ 13' \text{ Lt}$   
 Reset P.K. Nail  
 8713

②

33+49.35  
 R.R. Spk. 1/2" down  
 on & R/W  
 $\Delta = 0^\circ 26' \text{ Rt.}$   
 8712

①

4+13.68  
 8711

①

0+00  
 R.R. Spk.  
 2 1/2" down  
 $\Delta = 0^\circ 0' 0''$   
 set P.K. Nail  
 8710

