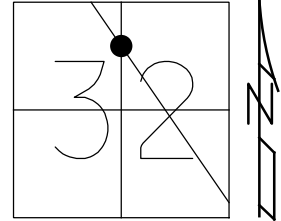


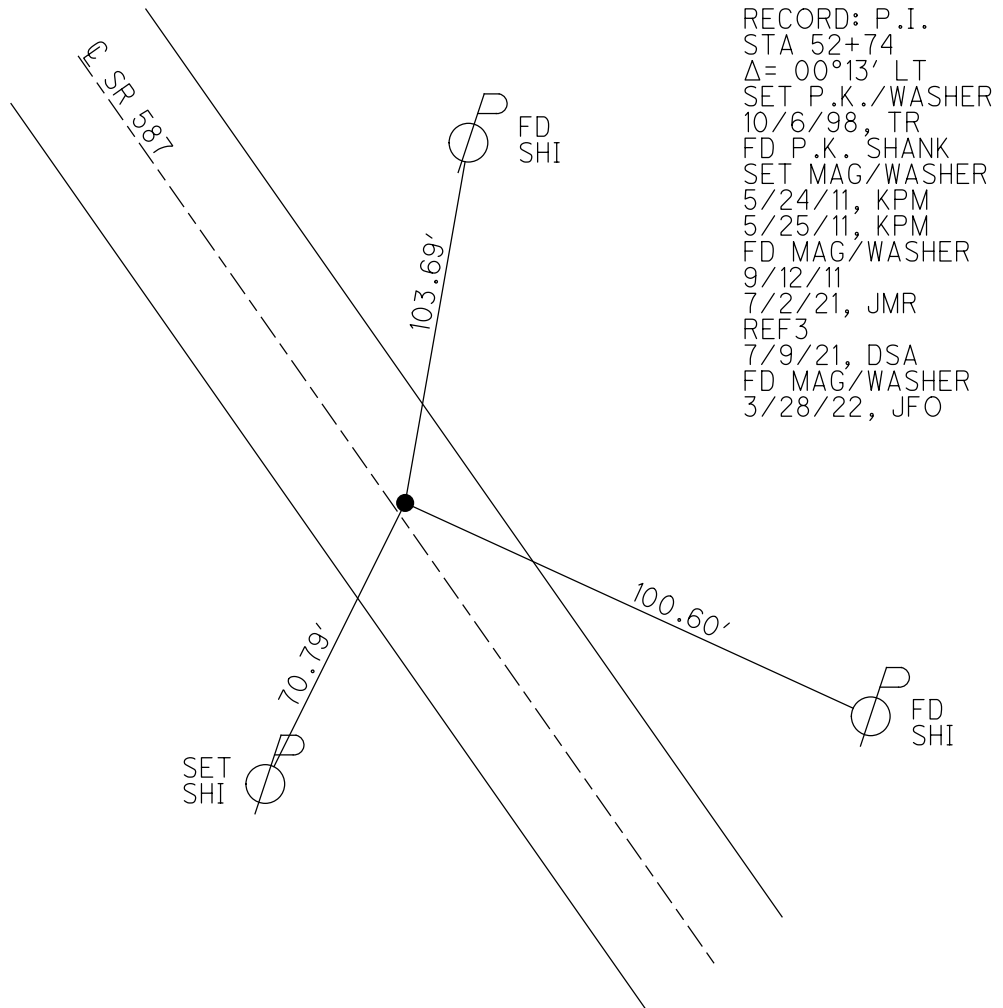
O.D.O.T. DISTRICT 2 SURVEY OFFICE (USE ONLY)

PERSONNEL _____ REFERENCE NO. 3 SHEET 5 OF 30
 NOTES FINGER DATE 5/24/11 ROUTE SR 587
 H.C. MOSER WEATHER OVERCAST COUNTY SENECA
 R.C. HARRBAUGH TEMP. 65° TOWNSHIP SENECA
 DWG BY NIESE PID PAVE TRAIN SECTION 32
 T 1 N R 14 E

TYPE MONUMENT P.K. SHANK
 ON SURFACE - ~~BELOW~~ ON
 OFFSET Q PAVEMENT 1.0' ~~LT~~ : RT
10.3' TO RT EDGE PAVEMENT
 STATION: 52+74



HORZ. DATUM: NAD83(2011) GEOID: NAVD88 2018
 GRID: NORTHING: 488282.810 EASTING: 1754265.844



RECORD: P.I.
 STA 52+74
 $\Delta = 00^{\circ}13' \text{ LT}$
 SET P.K./WASHER
 10/6/98, TR
 FD P.K. SHANK
 SET MAG/WASHER
 5/24/11, KPM
 5/25/11, KPM
 FD MAG/WASHER
 9/12/11
 7/2/21, JMR
 REF3
 7/9/21, DSA
 FD MAG/WASHER
 3/28/22, JFO

O.D.O.T. DISTRICT 2 SURVEY OFFICE (USE ONLY)

PERSONNEL

REFERENCE NO. 3

SHEET 5 OF 30

NOTES FINGER

DATE 5/24/11

ROUTE SR 587

H.C. MOSER

WEATHER OVERCAST

COUNTY SENECA

R.C. HARRBAUGH

TEMP. 65°

TOWNSHIP SENECA

SECTION 32

DWG BY NIESE

PID PAVE TRAIN

T 1 N R 14 E

TYPE MONUMENT P.K. SHANK

ON SURFACE - ~~BELOW~~ ON

OFFSET ☐ PAVEMENT 1.0' ~~LT~~ : RT

10.3' TO RT EDGE PAVEMENT

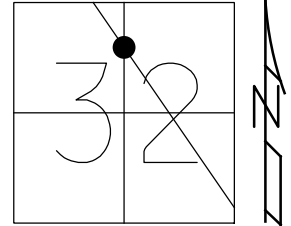
STATION: 52+74

HORIZ.DATUM: NAD83(2011)

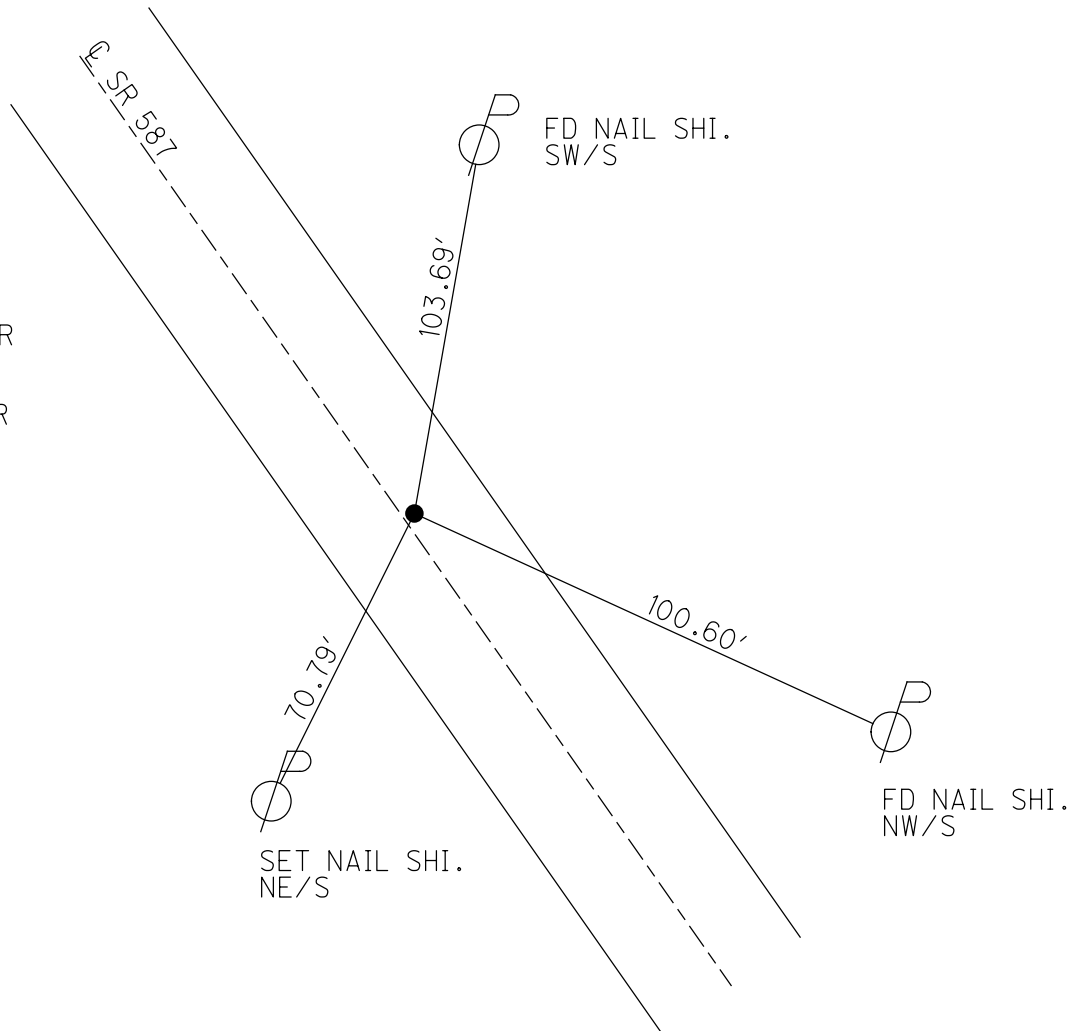
GEOID: 18 US

GRID: NORTHING: 488282.810

EASTING: 1754265.844



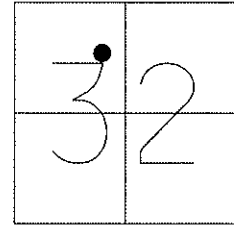
RECORD: P.I.
 STA 52+74
 $\Delta = 00^{\circ}13'$ LT
 SET P.K./WASHER
 10/6/98, TR
 FD P.K. SHANK
 SET MAG/WASHER
 5/24/11, KPM
 5/25/11, KPM
 FD MAG/WASHER
 9/12/11
 7/2/21, JMR
 REF3
 7/9/21, DSA
 FD MAG/WASHER
 3/28/22, JFO



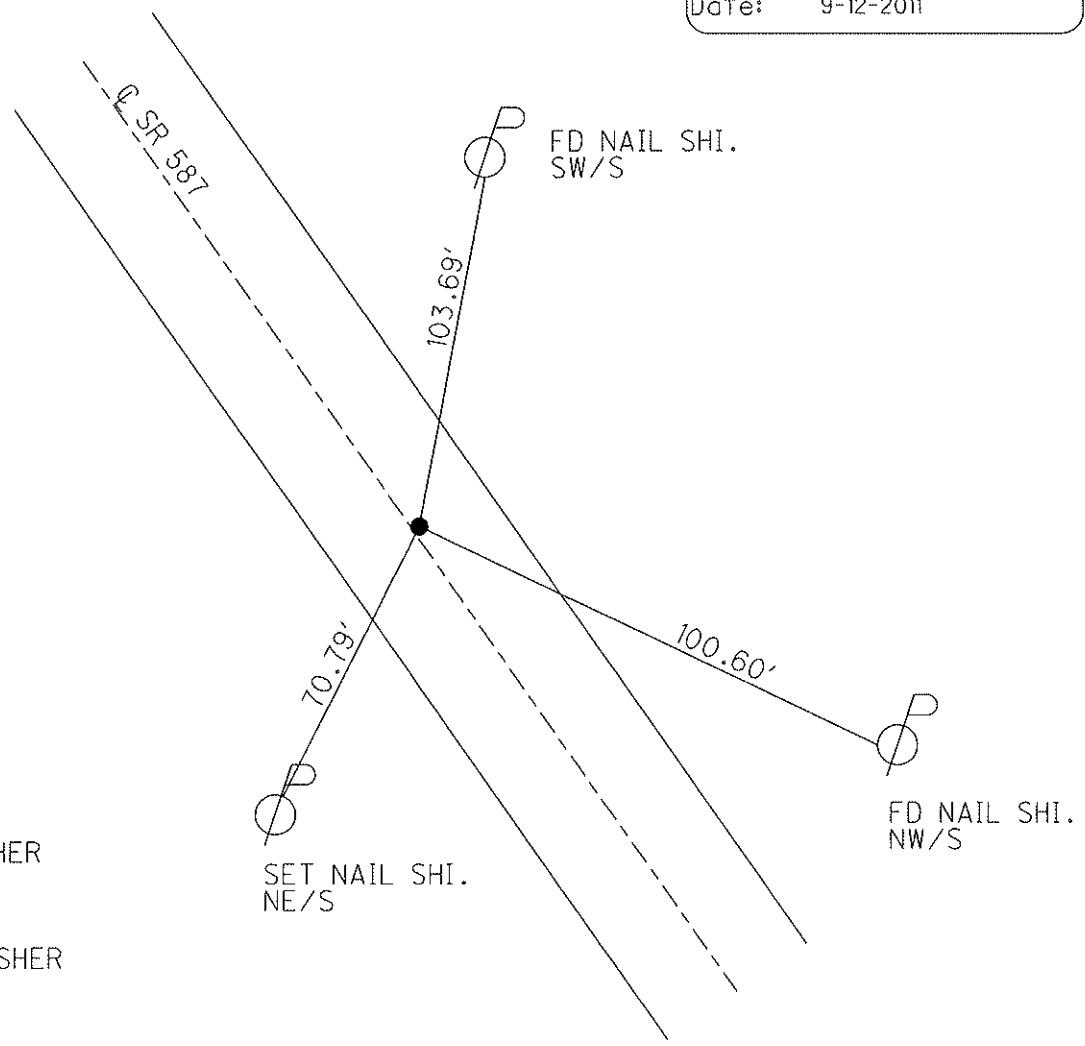
O.D.O.T. DISTRICT 2 SURVEY OFFICE

PERSONNEL	REFERENCE NO. <u>3</u>	SHEET <u>5</u> OF <u>30</u>
NOTES FINGER _____	DATE <u>5-24-11</u>	ROUTE <u>SR 587</u>
H.C. <u>MOSER</u>	WEATHER <u>OVERCAST</u>	COUNTY <u>SENECA</u>
R.C. <u>HARBAUGH</u>	TEMP. <u>65°</u>	TOWNSHIP <u>SENECA</u>
_____	_____	SECTION <u>32</u>
_____	_____	T <u>1</u> N R <u>14</u> E

TYPE MONUMENT P.K. SHANK
 ON SURFACE - ~~BELOW~~ ON _____
~~LEFT = C PAV'T~~ - RIGHT 1.0'
10.3' TO RT. EDGE PAVEMENT
 S.L.M. 52+74
 Grid: Northing: 488282.861 Easting: 1754265.802



Preventative Maintenance
 Chip & Seal
 Existing Point Uncovered
 Date: 9-12-2011



RECORD PI:
 $\Delta = 0^\circ 13' \text{ LT.}$
 REC. 52+74
 RESET PK/WASHER
 10-6-98, T.R.
 FD. SHANK.
 RESET MAG/WASHER
 5-24-11, KPM
 GPS, REF3
 5/25/11, KPM

O.D.O.T. DISTRICT 2 SURVEY OFFICE

PERSONNEL

REFERENCE NO. 3

SHEET 4 OF 24

NOTES CANTERBURY

H.C. ROUSOS

R.C. LOEHRKE

DATE 5-4-98

WEATHER OVERCAST

TEMP. +63° F

ROUTE 587

COUNTY SENECA

TOWNSHIP SENECA

SECTION 32

T1 N R14 E

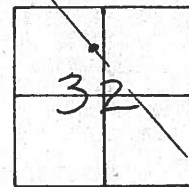
TYPE MONUMENT PK & WASHER ATOP RR SPK.

ON SURFACE - ~~BELOW~~ SURFACE

~~LEFT - C. PAV'T.~~ - RIGHT 1' RT E

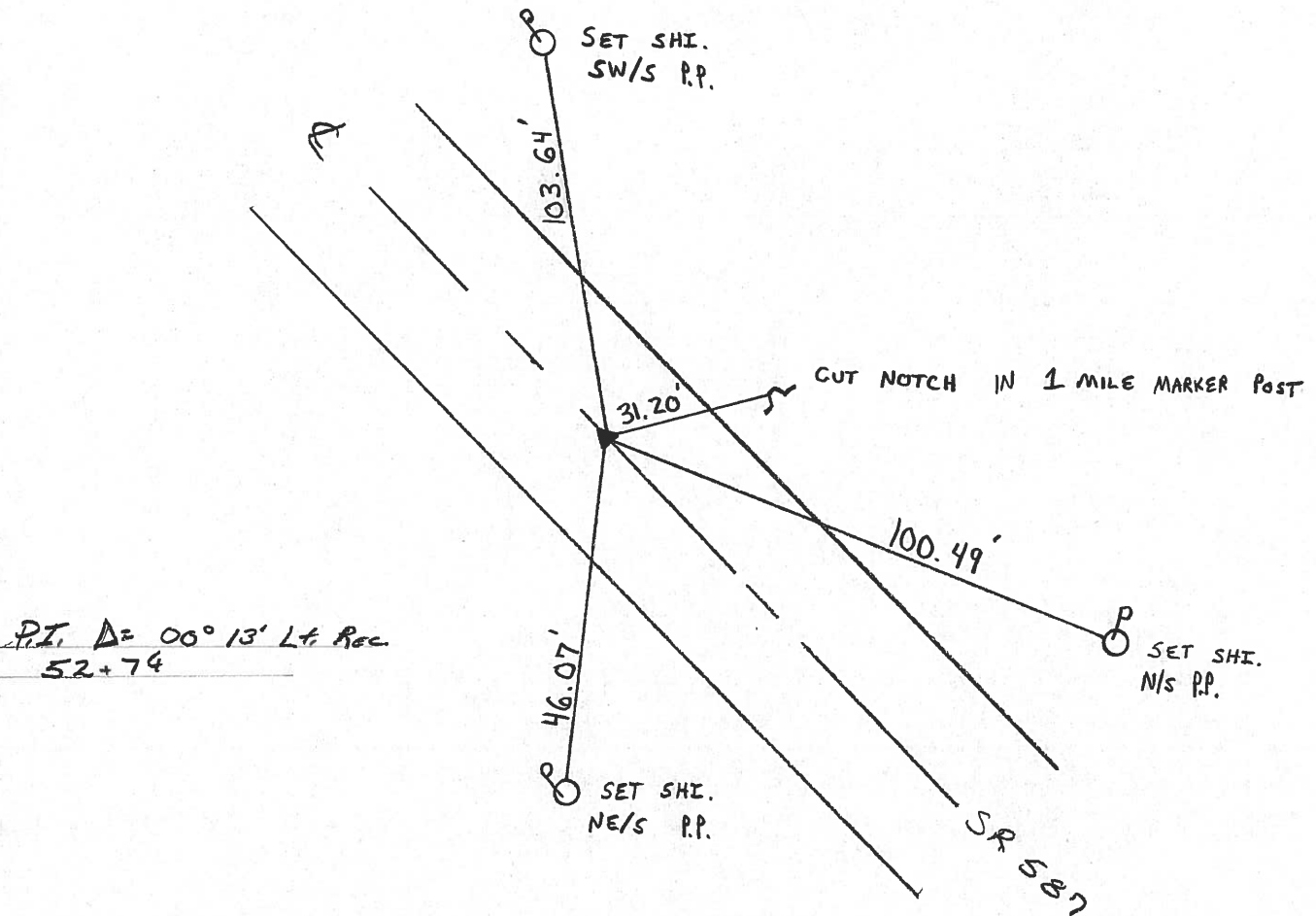
10.6' TO RT EDGE PAVEMENT

S.L.M. SLK 1.608 / 1+601.58



S.L.M. - 0.999 ±

RESET P.K./WASHER
 10-6-98
 T.R.



O.D.O.T. DISTRICT 2 SURVEY OFFICE

PERSONNEL

REFERENCE NO. 3

SHEET 4 OF

NOTES CEONIN

H.C. BARBOUR

R.C. GEYMAN

DATE 8/20/85

WEATHER SUNNY

TEMP. 68°

ROUTE #587

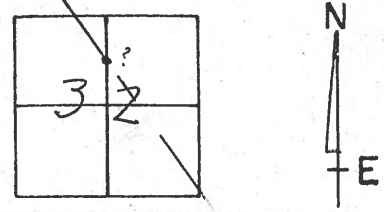
COUNTY SENECA

TOWNSHIP SENECA

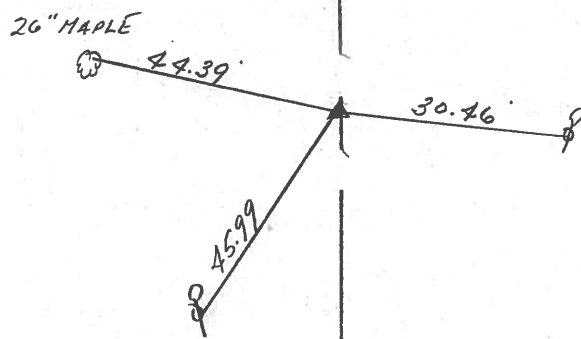
SECTION 32

T. 1 N. R. 14 E.

TYPE MONUMENT P.K. WASHER ATOP P.P. SPIKE
 ON SURFACE - BELOW ON SURFACE
 LEFT - ℄ PAV'T. - RIGHT 1' RT. OF ℄. OF PAINT
 TO EDGE PAVEMENT
 S.L.M. 0.999±



P.I. Δ = 00°13' Lt. Rec.
52+74

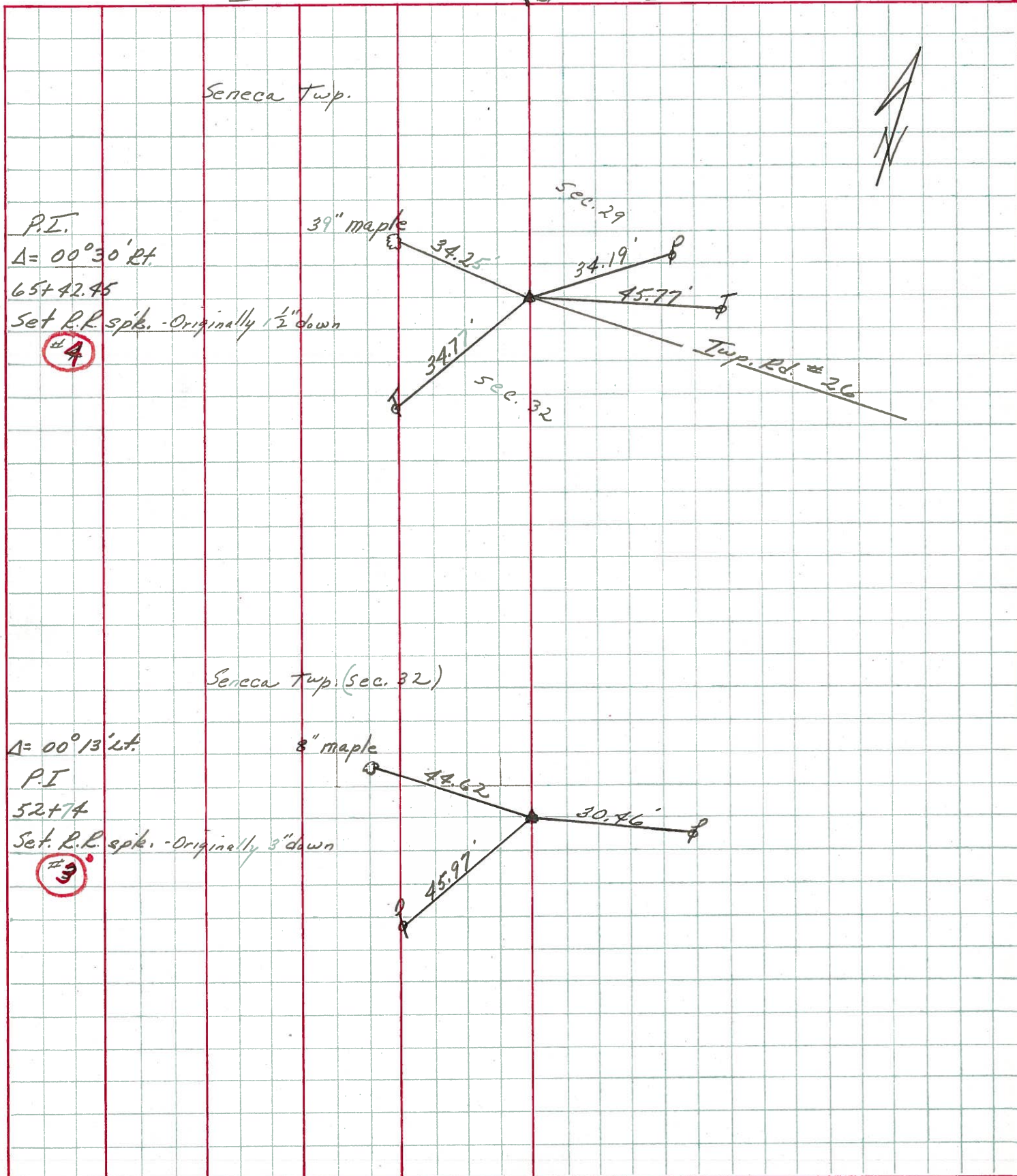


PERSONNEL	TITLE	PERSONNEL	TITLE
Ash-Vac.			
Cronin			
Ripple			
Anderson			

COUNTY Seneca DATE 9/20/72
 S. R. #587 WEATHER sunny
 SEC. _____ TEMP. 70°

DESCRIPTION Wyandot-Seneca Co. Line - Northwest JOB NO. _____

LEFT CENTER LINE RIGHT



PERSONNEL	TITLE	PERSONNEL	TITLE
Schneider			
Mosser			
Barbour			
Potts			

COUNTY Seneca DATE 10-31-69
 S. R. 587 WEATHER Fair
 SEC. _____ TEMP. 50°

DESCRIPTION Wyandot Co. Line to New Riegel JOB NO. _____
 LEFT CENTER LINE RIGHT

④

+ 65+42
 R.R. spk. 1/2" down
 on & R/W
 $\Delta = 0^\circ 13' \text{ Lt.}$
 8714

③

52+74
 R.R. spk. 1/2" down
 $\Delta = 0^\circ 13' \text{ Lt.}$
 Reset P.K. Nail
 8713

②

33+49.35
 R.R. Spk. 1/2" down
 on & R/W
 $\Delta = 0^\circ 26' \text{ Rt.}$
 8712

①

4+13.68
 8711

①

0+00
 R.R. Spk.
 2 1/2" down
 $\Delta = 0^\circ 0' 0''$
 set P.K. Nail
 8710

