

O.D.O.T. DISTRICT 2 SURVEY OFFICE (USE ONLY)

PERSONNEL

REFERENCE NO. 4

SHEET 6 OF 30

NOTES FINGER

DATE 5/24/11

ROUTE SR 587

H.C. MOSER

WEATHER OVERCAST

COUNTY SENECA

R.C. HARBAUGH

TEMP. 65°

TOWNSHIP SENECA

SECTION 32

DWG BY NIESE

PID PAVE TRAIN

T 1 N R 14 E

TYPE MONUMENT P.K.

ON SURFACE - ~~BELOW~~ ON

OFFSET CL PAVEMENT ON LT : RT

10.5' TO LT EDGE PAVEMENT

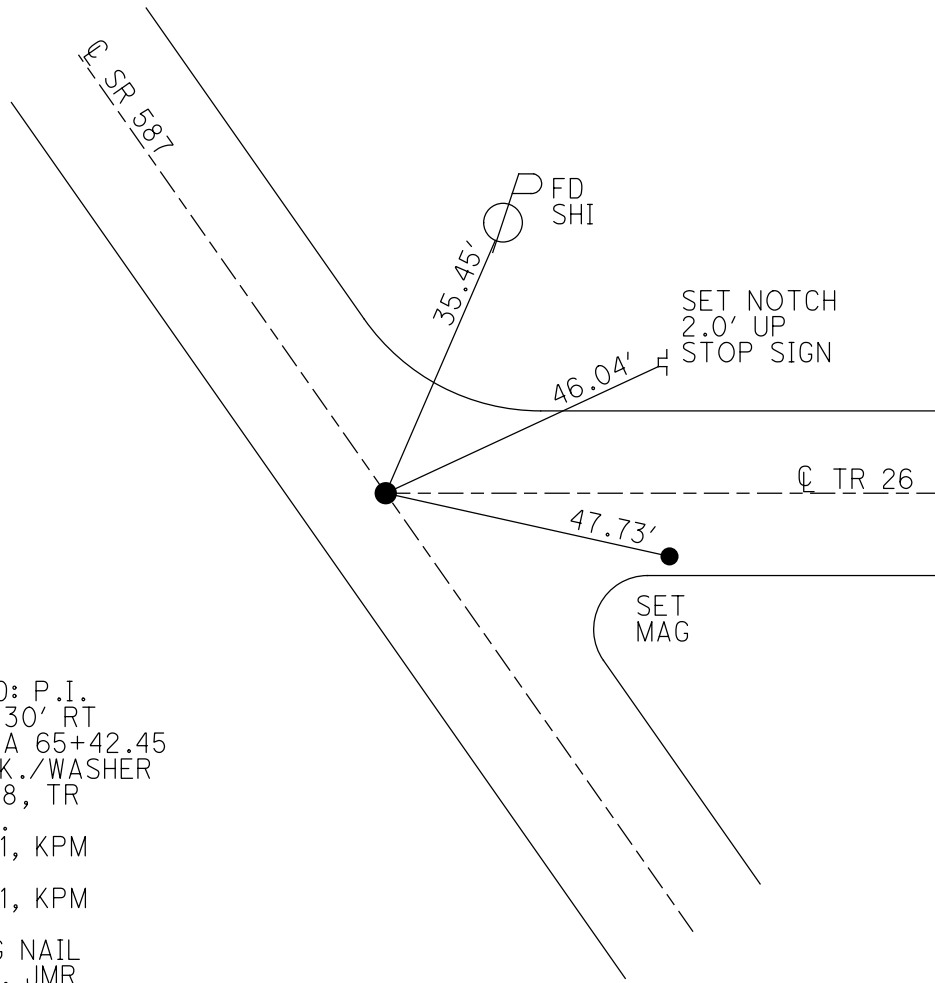
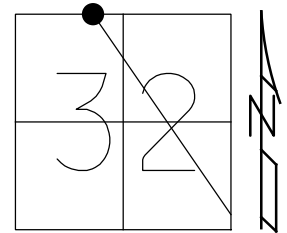
STATION: 65+48

HORZ.DATUM: NAD83

GEOID: 2009

GRID: NORTHING: 489332.837

EASTING: 1753553.686



RECORD: P.I.
 $\Delta = 00^{\circ}30'$ RT
 REC STA 65+42.45
 SET P.K./WASHER
 10/6/98, TR
 FD P.K.
 2/24/11, KPM
 REF4
 5/25/11, KPM
 9/12/11
 FD MAG NAIL
 7/2/21, JMR

O.D.O.T. DISTRICT 2 SURVEY OFFICE (USE ONLY)

PERSONNEL

REFERENCE NO. 4

SHEET 6 OF 30

NOTES FINGER

DATE 5/24/11

ROUTE SR 587

H.C. MOSE

WEATHER OVERCAST

COUNTY SENECA

R.C. HARBAUGH

TEMP. 65°

TOWNSHIP SENECA

SECTION 32

DWG BY NIESE PID PAVE TRAIN

T 1 N R 14 E

TYPE MONUMENT P.K.

ON SURFACE - ~~BELOW~~ ON

OFFSET 0 PAVEMENT ON LT : RT

10.5' TO LT EDGE PAVEMENT

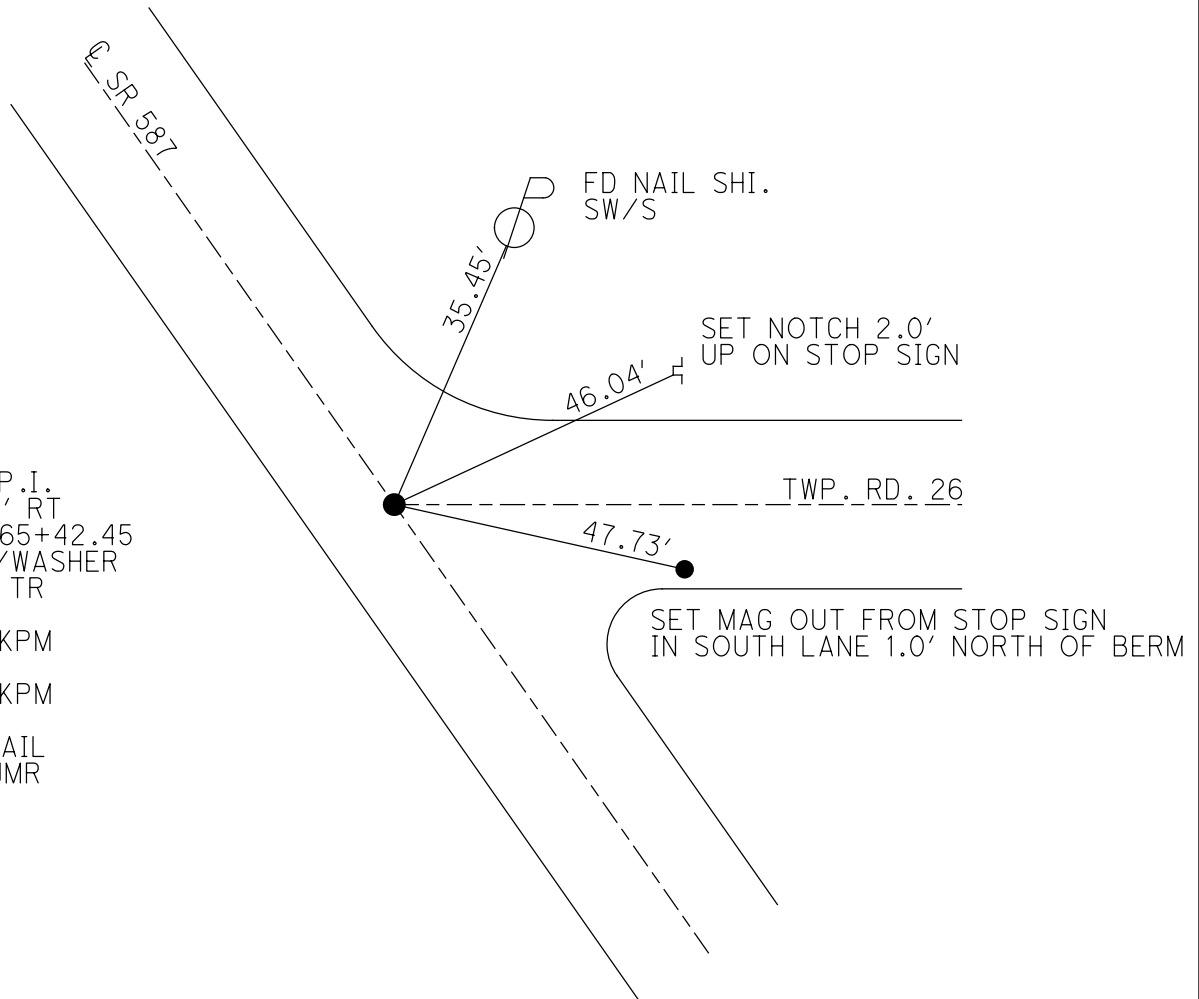
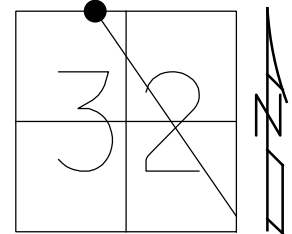
STATION: 65+48

HORZ.DATUM: _____

GEOID: _____

GRID: NORTHING: 489332.837

EASTING: 1753553.686

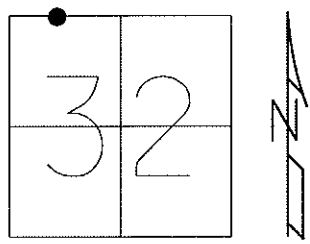


RECORD: P.I.
 $\Delta = 00^{\circ}30'$ RT
 REC STA 65+42.45
 SET P.K./WASHER
 10/6/98, TR
 FD P.K.
 2/24/11, KPM
 REF4
 5/25/11, KPM
 9/12/11
 FD MAG NAIL
 7/2/21, JMR

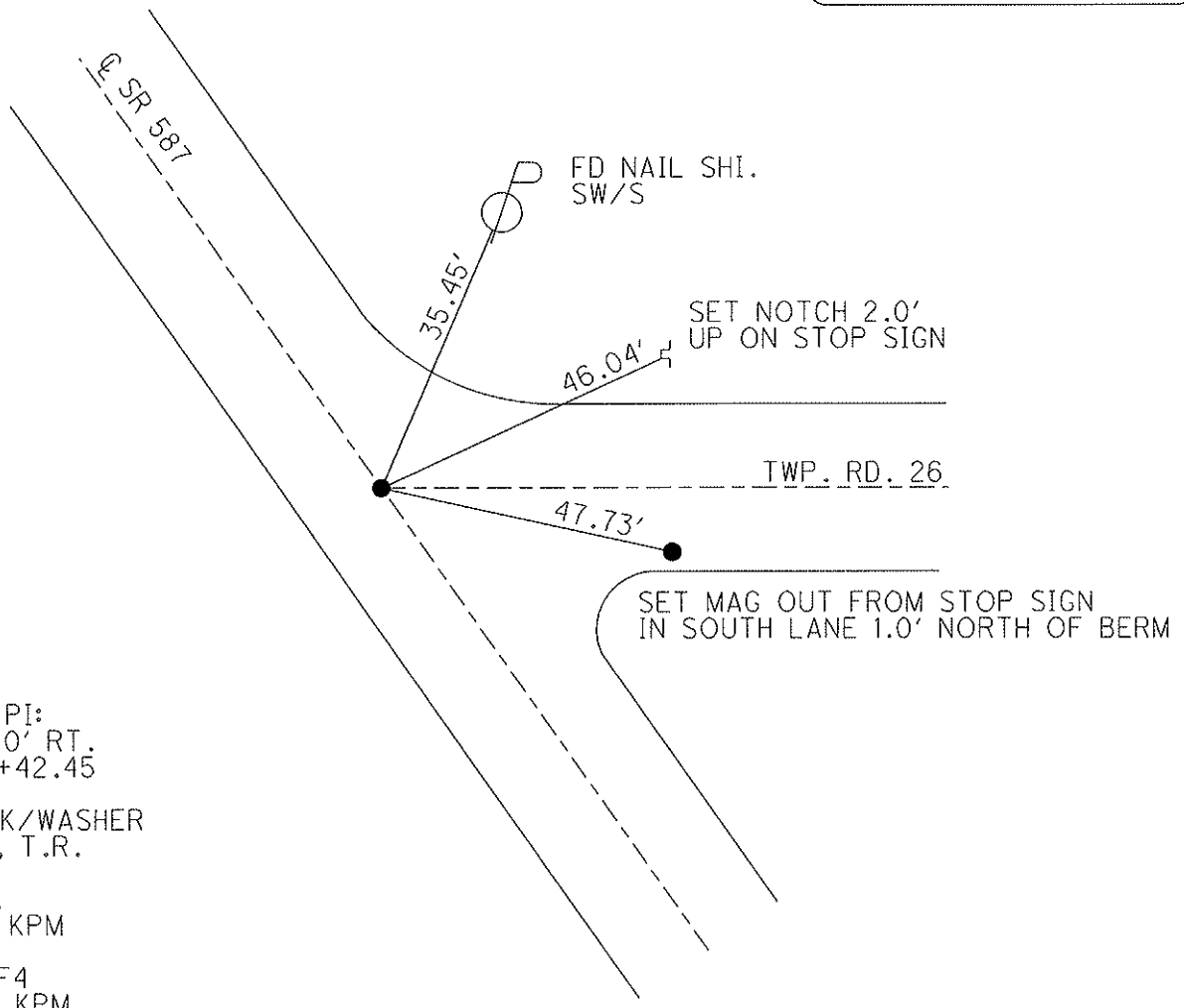
O.D.O.T. DISTRICT 2 SURVEY OFFICE

PERSONNEL	REFERENCE NO. <u>4</u>	SHEET <u>6</u> OF <u>30</u>
NOTES FINGER _____	DATE <u>5-24-11</u>	ROUTE <u>SR 587</u>
H.C. <u>MOSE</u>	WEATHER <u>OVERCAST</u>	COUNTY <u>SENECA</u>
R.C. <u>HARBAUGH</u>	TEMP. <u>65°</u>	TOWNSHIP <u>SENECA</u>
_____	_____	SECTION <u>32</u>
_____	_____	T <u>1</u> N R <u>14</u> E

TYPE MONUMENT PK
 ON SURFACE - ~~BELOW~~ ON
~~LEFT - C~~ PAV'T - ~~RIGHT~~ ON
10.5' TO LT. EDGE PAVEMENT
 S.L.M. 65+48
 Grid: Northing: 489332.837 Easting: 1753553.686



Preventative Maintenance
 Chip & Seal
 Existing Point Uncovered
 Date: 9-12-2011



RECORD PI:
 $\Delta = 0^\circ 30' \text{ RT.}$
 REC. 65+42.45
 RESET PK/WASHER
 10-6-98, T.R.
 FD. P.K.
 5-24-11, KPM
 GPS, REF4
 5/25/11, KPM

O.D.O.T. DISTRICT 2 SURVEY OFFICE

PERSONNEL _____

REFERENCE NO. 4

SHEET 5 OF 24

NOTES CANTERBURY

H.C. ROUSOS

R.C. LOEHRKE

DATE 5/4/98

WEATHER OVERCAST

TEMP. +63°F

ROUTE 587

COUNTY SENECA

TOWNSHIP SENECA

SECTION 32

T. 14 R. 14 E

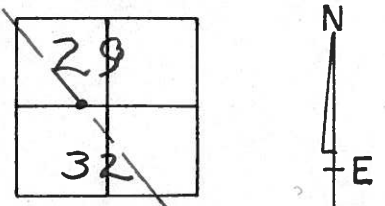
TYPE MONUMENT PK & WASHER AT TOP RR SPIK

ON SURFACE - ~~BELOW~~ ON SURFACE

~~LEFT - & PAVT.~~ - ~~RIGHT~~ ON & BOTH

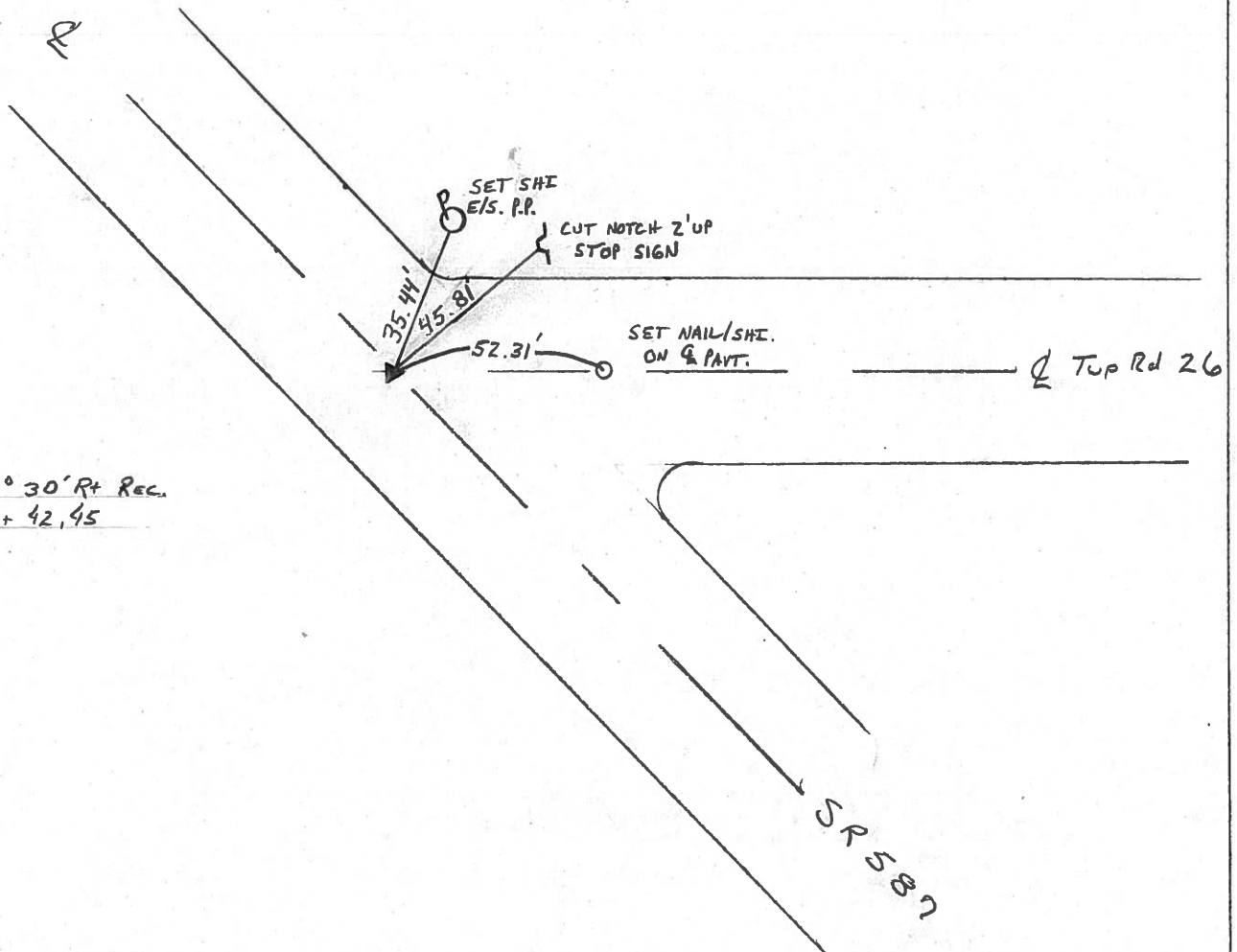
11.26' TO LT. EDGE PAVEMENT

S.L.M. SLK 1,996 / 1+987.81



S.L.M. - 1.24 ±

RESET PK/WASHER
10/6/98
T.R.



PI $\Delta = 00^\circ 30' \text{ Rt Rec.}$
65 + 42.45

O.D.O.T. DISTRICT 2 SURVEY OFFICE

PERSONNEL

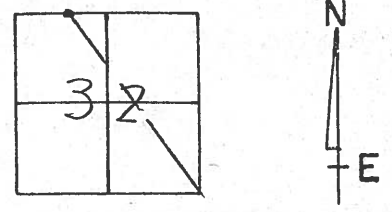
REFERENCE NO. 4 SHEET 5 OF

NOTES CRONIN
 H.C. BARBOUR
 R.C. GEYMAN

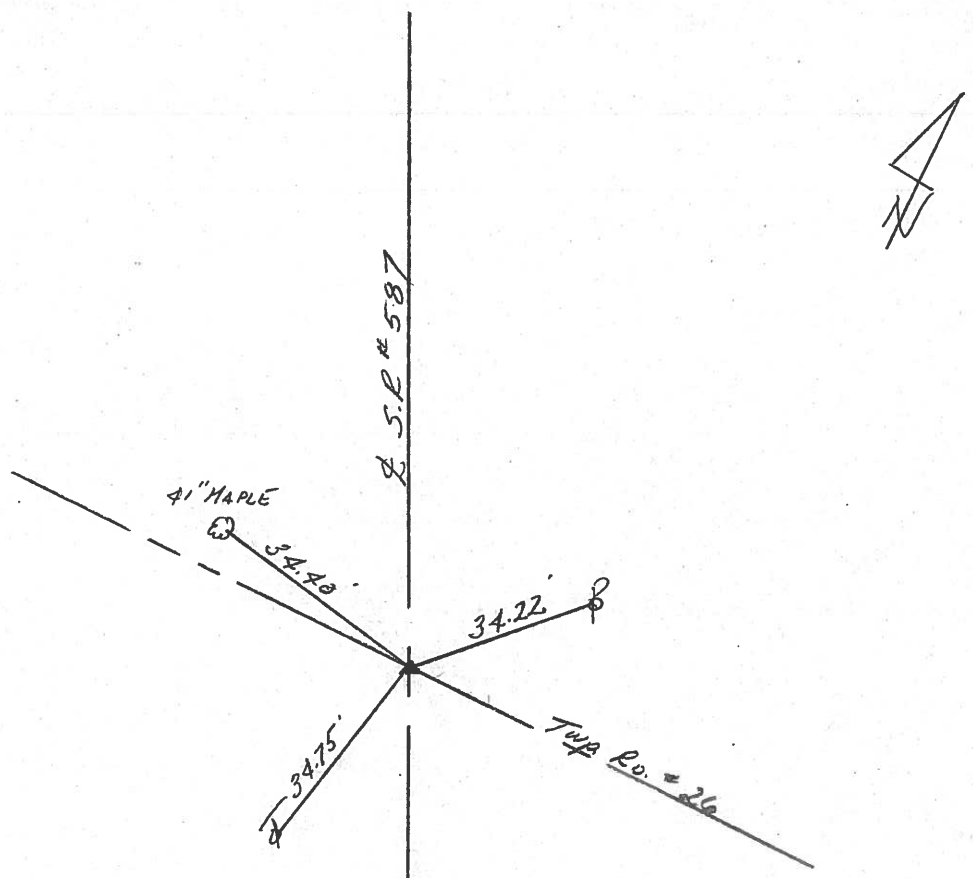
DATE 8/20/85
 WEATHER SUNNY
 TEMP. 68°

ROUTE # 587
 COUNTY SENECA
 TOWNSHIP SENECA
 SECTION 32
 T. 1 N. 14 E.

TYPE MONUMENT P.K. & WASHER ATOP R.R. SPIKE
 ON SURFACE - BELOW ON SURFACE
 LEFT - ☉ PAV'T. - RIGHT ☉ OF PAVMT
 TO EDGE PAVEMENT
 S.L.M. 1.22 ±



P.I. Δ = 00°30' Lt. Rec
65+42.45



PERSONNEL	TITLE	PERSONNEL	TITLE
Ash - Vac.			
Cronin			
Ripple			
Anderson			

COUNTY Seneca

DATE 9/20/72

S. R. # 587

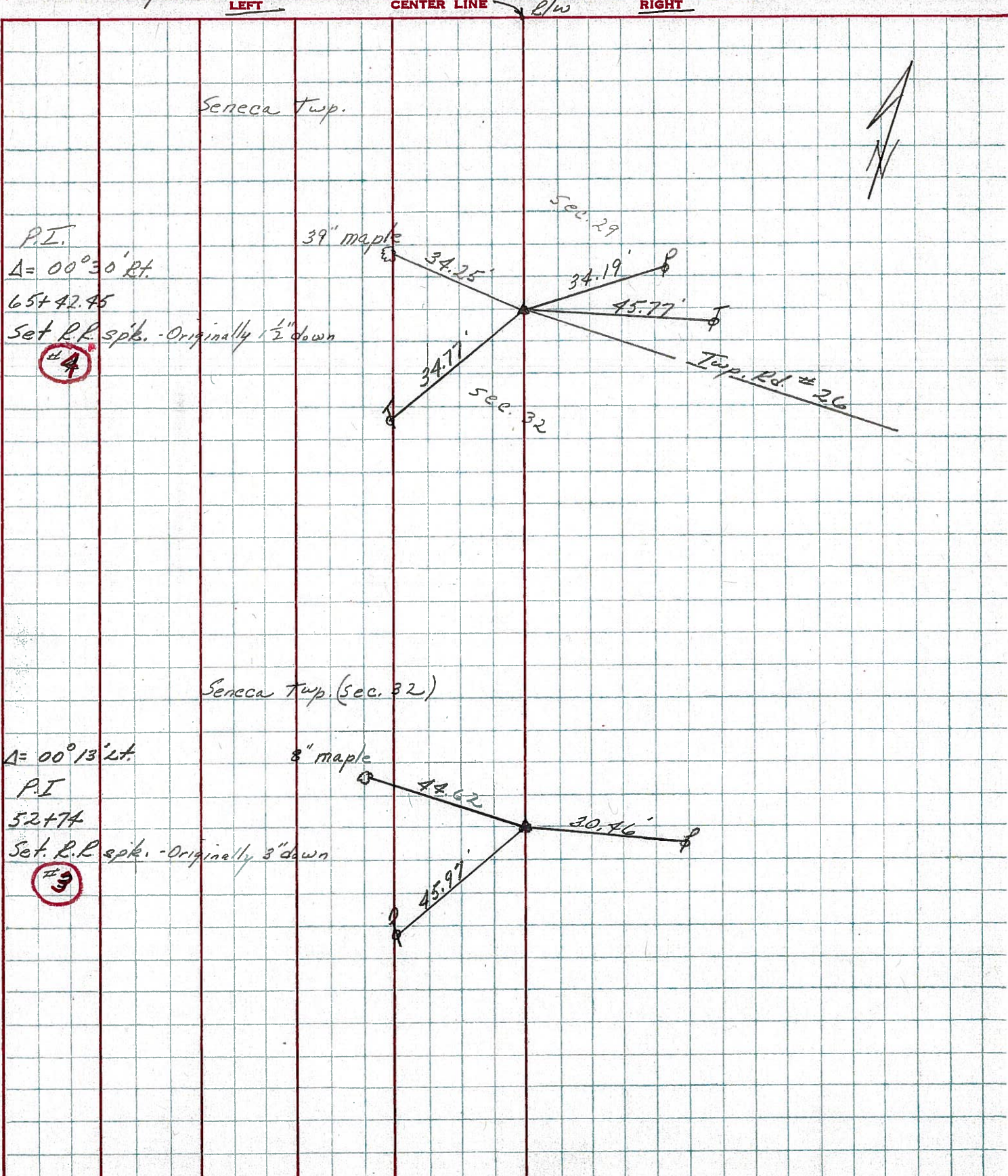
WEATHER sunny

SEC.

TEMP. 70°

DESCRIPTION Wyandot-Seneca Co. Line - Northwest

JOB NO.



PERSONNEL	TITLE	PERSONNEL	TITLE
Schneider			
Mosser			
Barbour			
Potts			

COUNTY Seneca DATE 10-31-69
 S. R. 587 WEATHER Fair
 SEC. _____ TEMP. 50°

DESCRIPTION Wyandot Co. Line to New Riegel JOB NO. _____
 LEFT CENTER LINE RIGHT

④

65+42
 R.R. spk. 1/2" down
 on & R/W
 $\Delta = 0^\circ 30' \text{ Lt.}$
 8714

③

52+74
 R.R. spk. 1/2" down
 $\Delta = 0^\circ 13' \text{ Lt}$
 Reset P.K. Nail
 8713

②

33+49.35
 R.R. spk. 1/2" down
 on & R/W
 $\Delta = 0^\circ 26' \text{ Rt.}$
 8712

①

4+13.68 Δ did not find
 8711

①

0+00
 R.R. spk.
 2 1/2" down
 $\Delta = 0^\circ 0' 0''$
 set P.K. Nail
 8710

