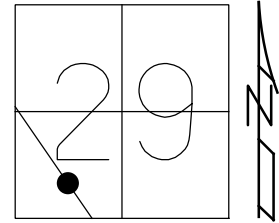


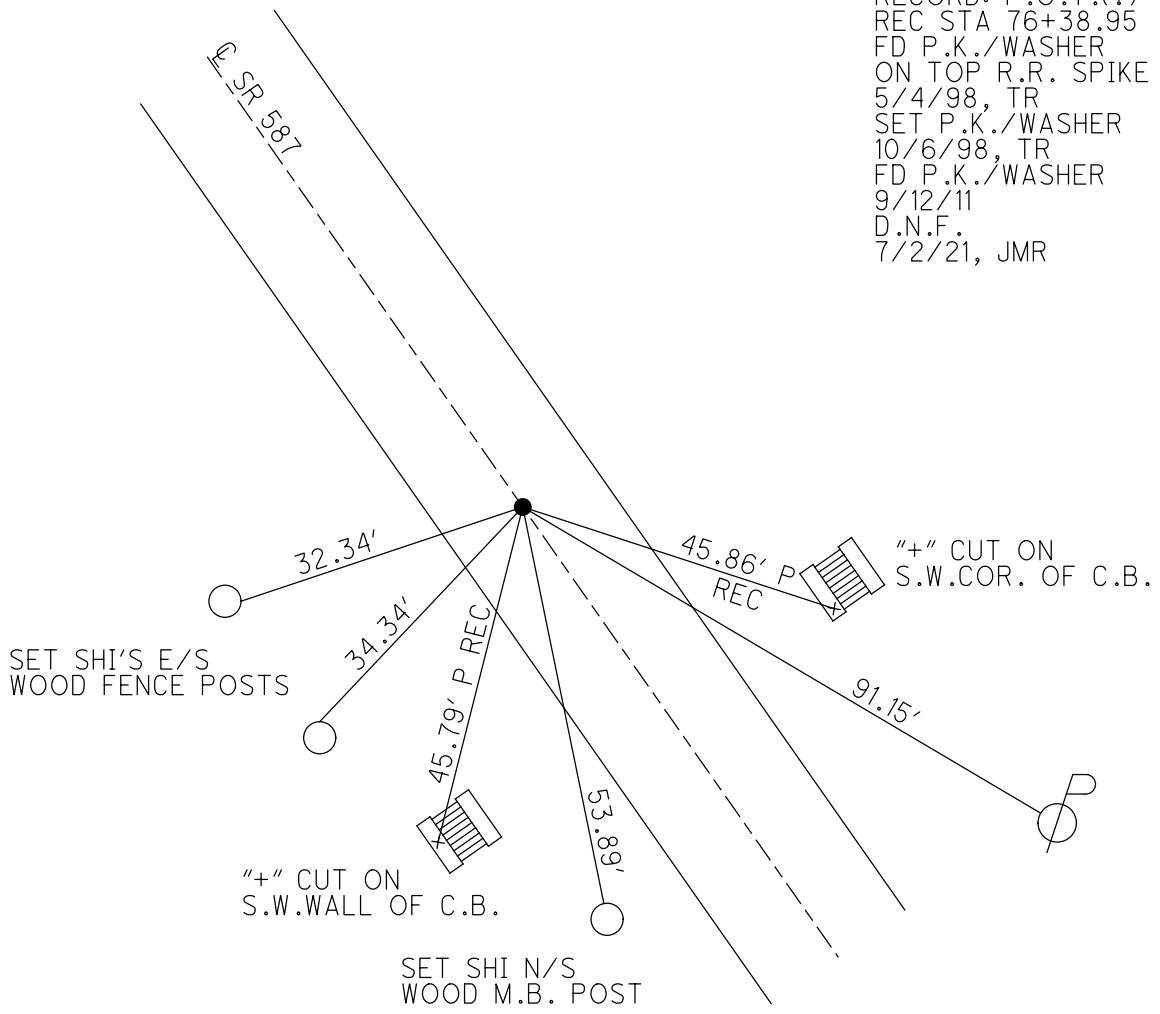
O.D.O.T. DISTRICT 2 SURVEY OFFICE (USE ONLY)

PERSONNEL _____ REFERENCE NO. 5 SHEET 7 OF 30
 NOTES CANTERBURY DATE 5/4/98 ROUTE SR 587
 H.C. ROUSOS WEATHER OVERCAST COUNTY SENECA
 R.C. LOEHRKE TEMP. 63° TOWNSHIP SENECA
 DWG BY NIESE PID PAVE TRAIN SECTION 29
 T 1 N R 14 E

TYPE MONUMENT P.K./WASHER TOP R.R.SPIKE
 ON SURFACE - ~~BELOW~~ ON
 OFFSET Q PAVEMENT ON LT : RT
11.2' TO LT EDGE PAVEMENT
 STATION: 76+38.95
 HORZ.DATUM: _____ GEOID: _____
 GRID: NORTHING: _____ EASTING: _____



RECORD: P.O.T.(?)
 REC STA 76+38.95
 FD P.K./WASHER
 ON TOP R.R. SPIKE
 5/4/98, TR
 SET P.K./WASHER
 10/6/98, TR
 FD P.K./WASHER
 9/12/11
 D.N.F.
 7/2/21, JMR



O.D.O.T. DISTRICT 2 SURVEY OFFICE

PERSONNEL

REFERENCE NO. 5

SHEET 7 OF 30

NOTES CANTERBURY

DATE 5/4/98

ROUTE SR 587

H.C. ROUSOS

WEATHER OVERCAST

COUNTY SENECA

R.C. LOEHRKE

TEMP. 63°

TOWNSHIP SENECA

SECTION 29

T 1 N R 14 E

TYPE MONUMENT P.K./WASHER TOP R.R.SPIKE

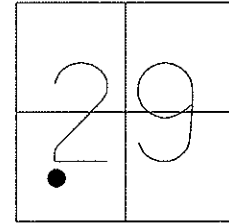
ON SURFACE - BELOW ON

LEFT - Q PAV'T - RIGHT ON

11.2' TO LT. EDGE PAVEMENT

S.L.M. 76+38.95

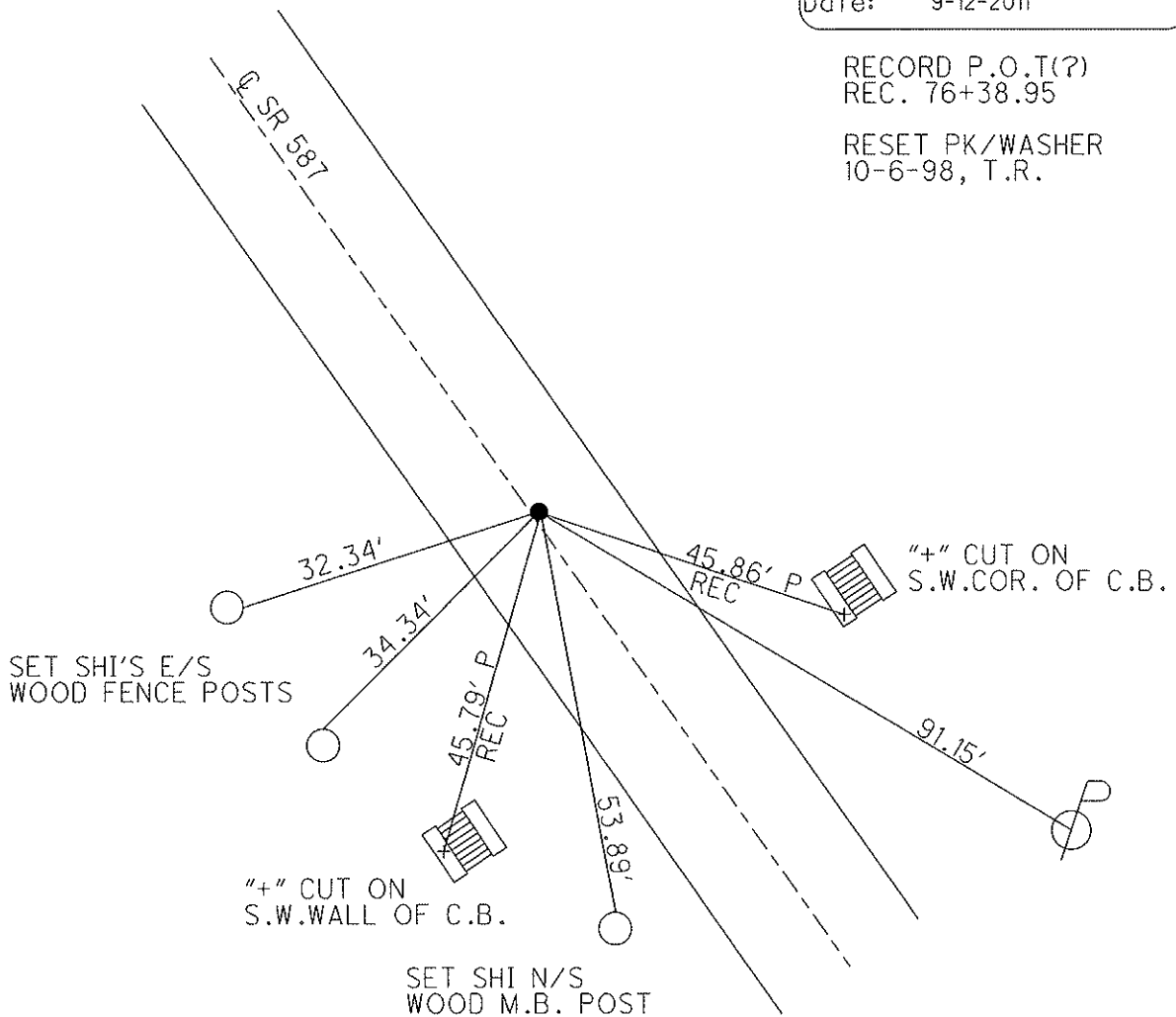
Grid: Northing: _____ Easting: _____



Preventative Maintenance
Chip & Seal
Existing Point Uncovered
Date: 9-12-2011

RECORD P.O.T(?)
REC. 76+38.95

RESET PK/WASHER
10-6-98, T.R.



O.D.O.T. DISTRICT 2 SURVEY OFFICE

PERSONNEL _____

REFERENCE NO. 5

SHEET 6 OF 24

NOTES CANTERBURY

H.C. Rousos

R.C. LOEHRKE

DATE 5/4/98

WEATHER OVERCAST

TEMP. +63° F

ROUTE 587

COUNTY SENECA

TOWNSHIP SENECA

SECTION 29

T.1 NR 14 E

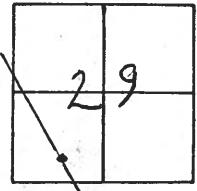
TYPE MONUMENT PK & WASHER AT TOP RR. SPIK

ON SURFACE - BELOW ON SURFACE

LEFT - & PAV'T. - RIGHT ON &

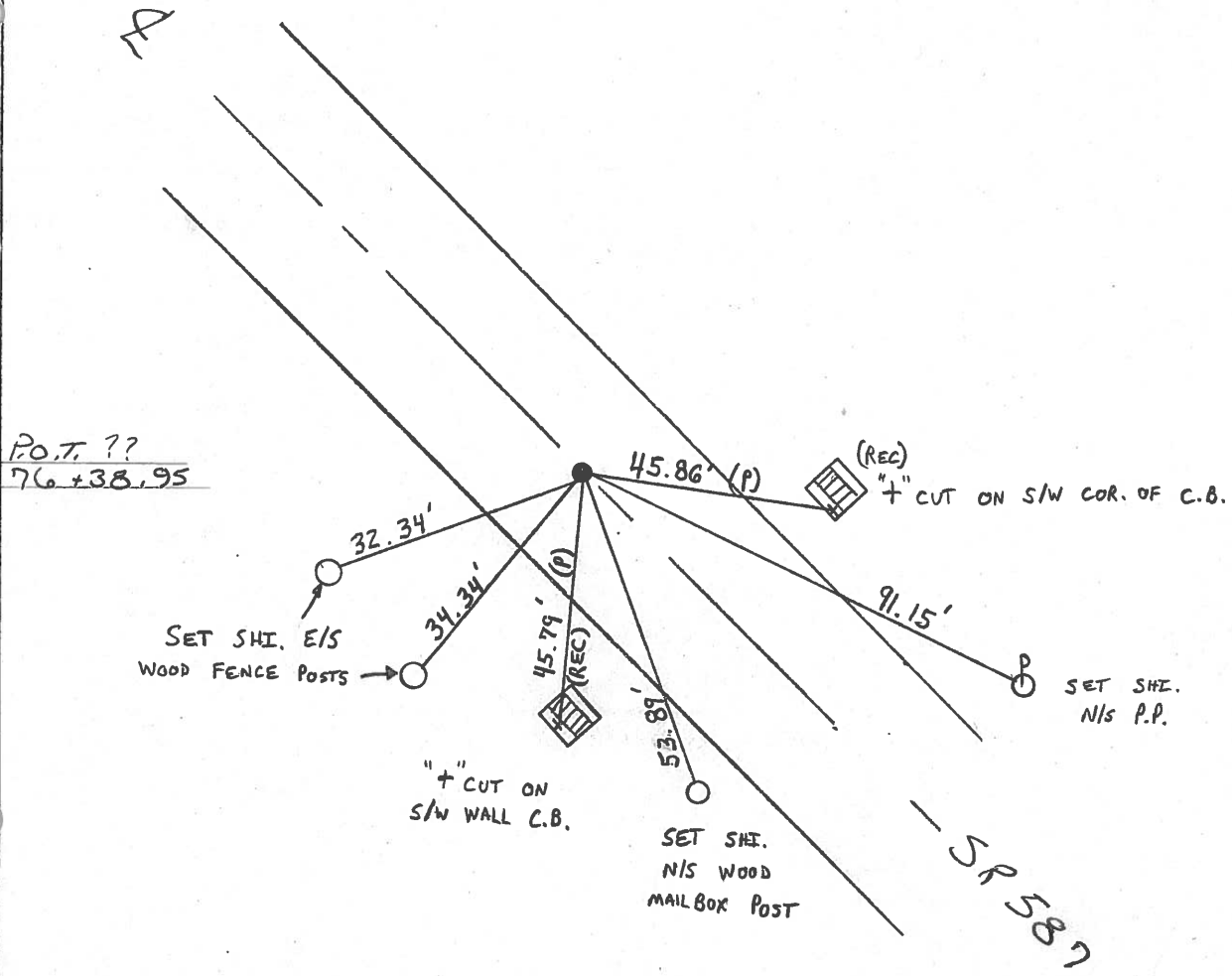
11.2' TO LT EDGE PAVEMENT

S.L.M. SLK 2.329 / 2+321.64



S.L.M. = 1.447 ±

RESET P.K./WASHER
 10/6/98
 T.R.



O.D.O.T. DISTRICT 2 SURVEY OFFICE

PERSONNEL

REFERENCE NO. 5

SHEET 6 OF

NOTES CRONIN

H.C. BARBOUR

R.C. GEYMAN

DATE 8/20/85

WEATHER SUNNY

TEMP. 68°

ROUTE #587

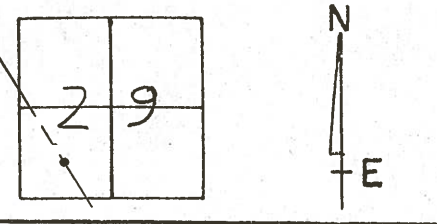
COUNTY SENECA

TOWNSHIP SENECA

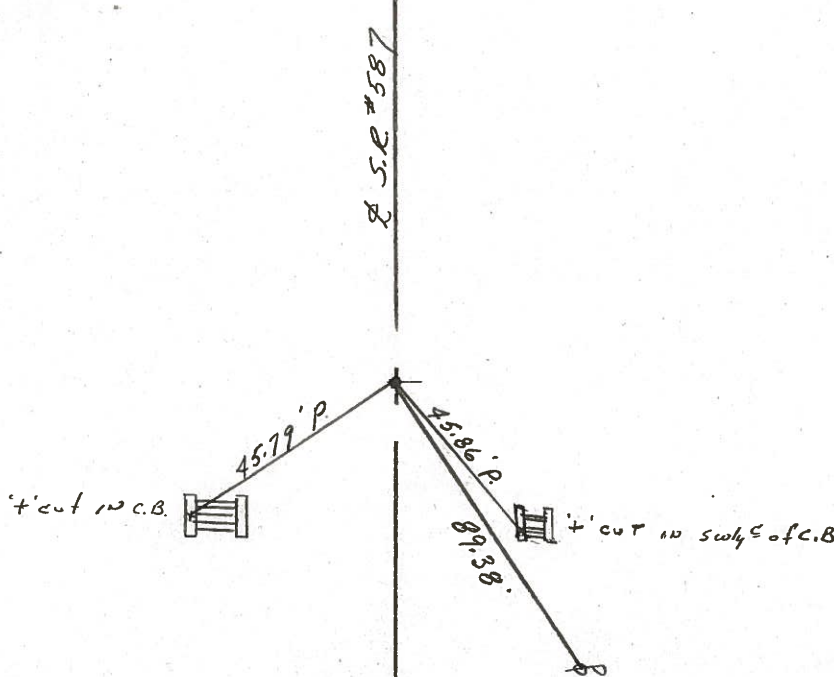
SECTION 29

T 1 N R 14 E

TYPE MONUMENT P.K. WASHER ATOP P.R. SPIKE
 ON SURFACE - BELOW ON SURFACE
 LEFT - ☉ PAV'T. - RIGHT ☉ PAVMT
 TO EDGE PAVEMENT
 S.L.M. 1.447±



P.O.T. ??
76+38.95



PERSONNEL	TITLE	PERSONNEL	TITLE
Ash - Vac.			
Cronin			
Ripple			
Anderson			

COUNTY Seneca

DATE 9/20/72

S. R. #587

WEATHER Sunny

SEC. _____

TEMP. 70°

DESCRIPTION Wyandot-Seneca Co. line - Northwest

JOB NO. _____

LEFT

CENTER LINE

RIGHT

Seneca Twp. (Sec. 29)



$\Delta = 00^{\circ} 05' \text{ Rt.}$

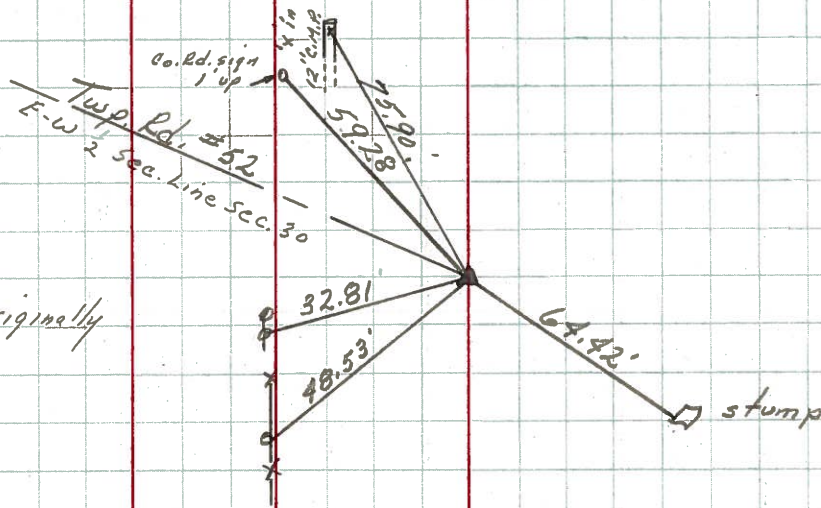
P. I

96+94.70

Set R.R. spike - Originally

7" down

#6

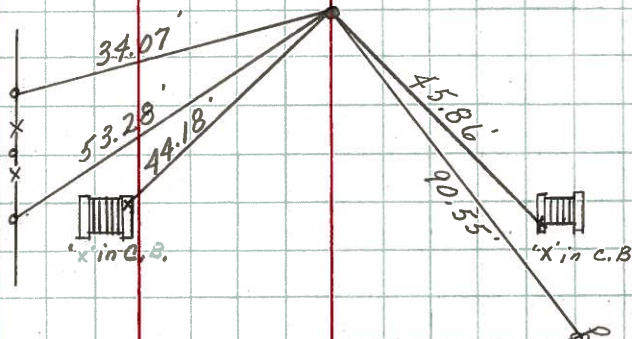


76+38.95

Set R.R. spike -

Originally 1 1/2" down

#5

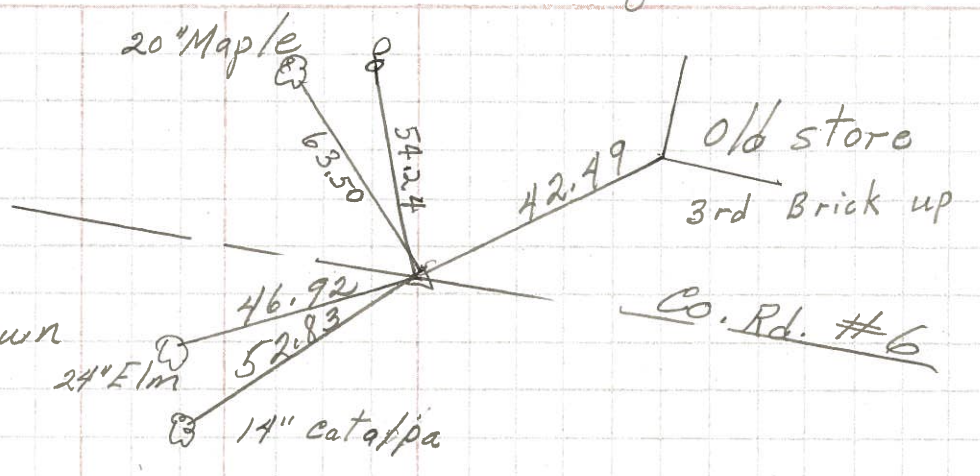


PERSONNEL	TITLE	PERSONNEL	TITLE	COUNTY	DATE
Schneider				Seneca	10-31-69
Mosser				S. R. 587	WEATHER cloudy
Barbour				SEC.	TEMP. 55°
Potts					

DESCRIPTION Wyandot Co. Line to New Reigel JOB NO. _____

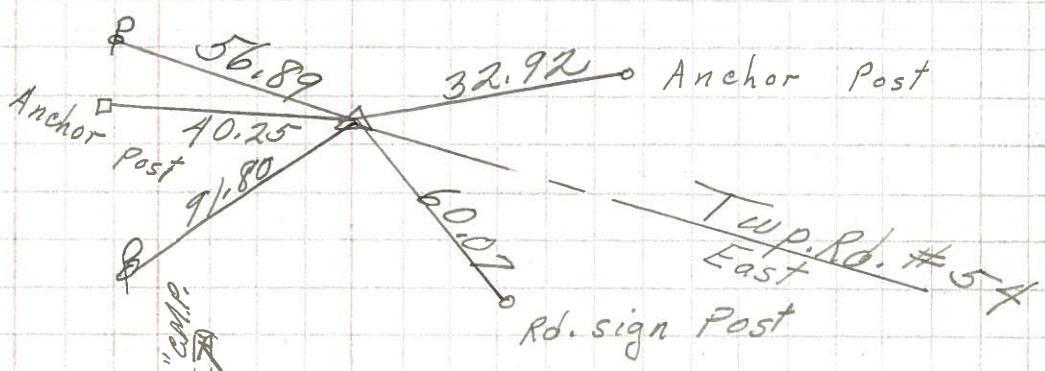
8

160+76.3
R.R. spk. 2" down
on & R/W
 $\Delta = 0^\circ 11' \text{ Rt.}$



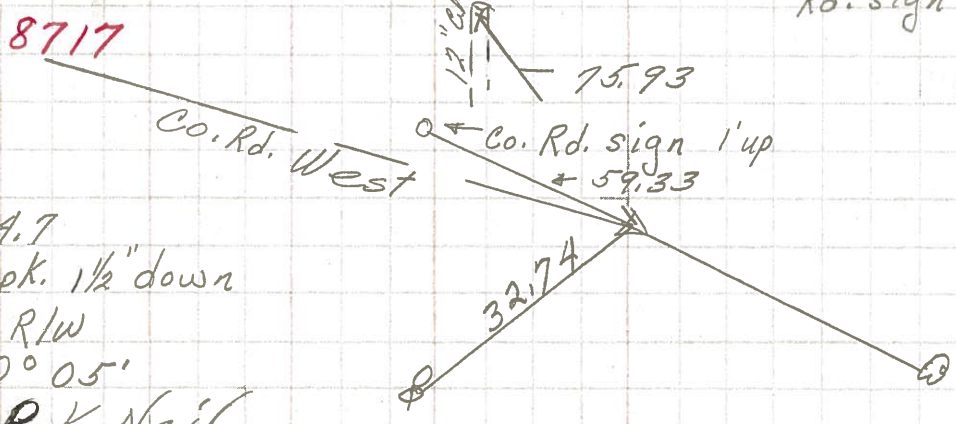
7

128+66.7
R.R. spk. 1/2" down
on & R/W
 $\Delta = 0^\circ 11' \text{ Rt.}$



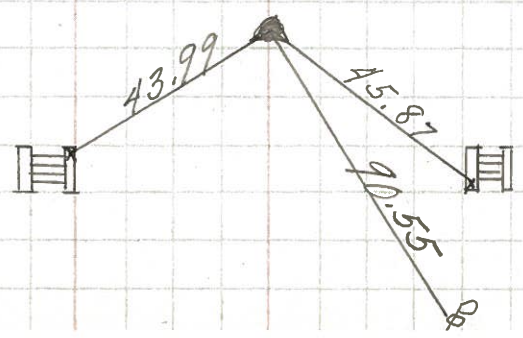
6

96+99.7
R.R. spk. 1/2" down
on & R/W
 $\Delta = 0^\circ 05'$
set P.K. Nail



5

P.O.T.
76+38.95
R.R. spk. 1/2" down
on & R/W
 $\Delta = 0^\circ 00'$



8715