

O.D.O.T. DISTRICT 2 SURVEY OFFICE (USE ONLY)

PERSONNEL _____ REFERENCE NO. 6 SHEET 8 OF 30

NOTES MILLER DATE 12/28/23 ROUTE SR 587

H.C. RHOADES WEATHER OVERCAST COUNTY SENECA

R.C. MILLER TEMP. 46° TOWNSHIP SENECA

DWG BY RHOADES PID PAVING TRAIN SECTION 29

T 1 N R 14 E

TYPE MONUMENT P.K.NAIL

ON SURFACE - ~~BELOW~~ ON

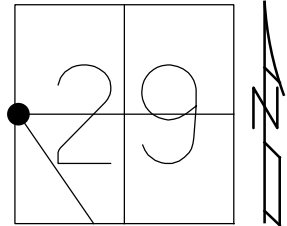
OFFSET ☉ PAVEMENT ON LT : RT

10.5' TO RT EDGE PAVEMENT

STATION: 96+94.70

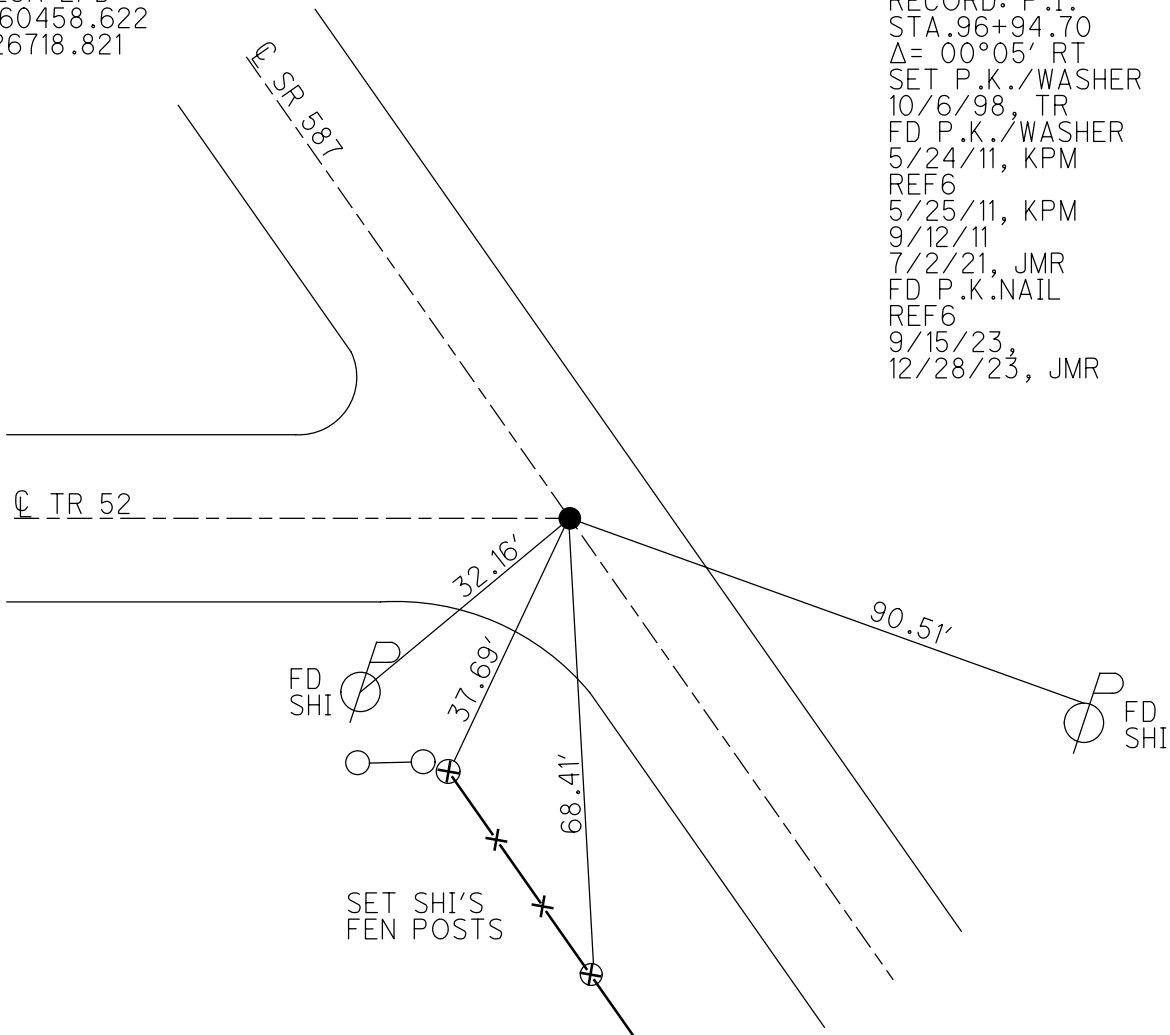
HORIZ.DATUM: NAD83 2011 GEOID: NAVD88 2018

GRID: NORTHING: 491958.686 EASTING: 1751811.656



SENECA LPD:
N: 260458.622
E: 126718.821

RECORD: P.I.
STA. 96+94.70
Δ = 00°05' RT
SET P.K./WASHER
10/6/98, TR
FD P.K./WASHER
5/24/11, KPM
REF6
5/25/11, KPM
9/12/11
7/2/21, JMR
FD P.K.NAIL
REF6
9/15/23,
12/28/23, JMR

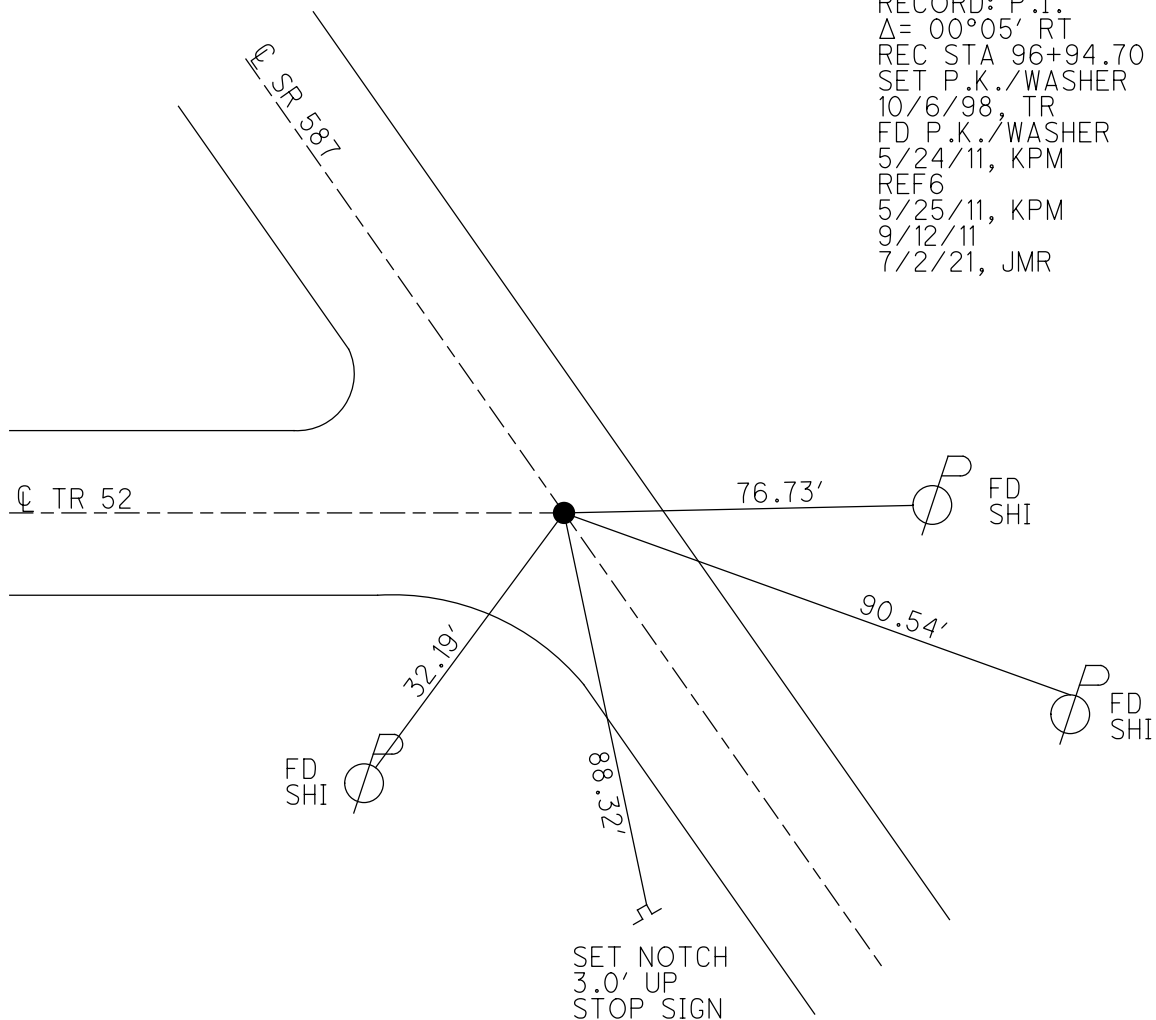
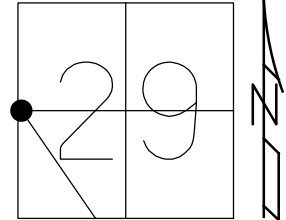


O.D.O.T. DISTRICT 2 SURVEY OFFICE (USE ONLY)

PERSONNEL _____ REFERENCE NO. 6 SHEET 8 OF 30
 NOTES FINGER DATE 5/24/11 ROUTE SR 587
 H.C. MOSE WEATHER OVERCAST COUNTY SENECA
 R.C. HARBAUGH TEMP. 65° TOWNSHIP SENECA
 DWG BY NIESE PID PAVE TRAIN SECTION 29
 T 1 N R 14 E

TYPE MONUMENT P.K./WASHER
 ON SURFACE - ~~BELOW~~ ON
 OFFSET CL PAVEMENT ON LT : RT
10.5' TO RT EDGE PAVEMENT
 STATION: 96+94.70

HORZ.DATUM: NAD83 GEOID: 2009
 GRID: NORTHING: 491958.737 EASTING: 1751811.642



RECORD: P.I.
 $\Delta = 00^{\circ}05' RT$
 REC STA 96+94.70
 SET P.K./WASHER
 10/6/98, TR
 FD P.K./WASHER
 5/24/11, KPM
 REF6
 5/25/11, KPM
 9/12/11
 7/2/21, JMR

O.D.O.T. DISTRICT 2 SURVEY OFFICE (USE ONLY)

PERSONNEL _____

REFERENCE NO. 6

SHEET 8 OF 30

NOTES FINGER

DATE 5/24/11

ROUTE SR 587

H.C. MOSER

WEATHER OVERCAST

COUNTY SENECA

R.C. HARBAUGH

TEMP. 65°

TOWNSHIP SENECA

DWG BY NIESE PID PAVE TRAIN

SECTION 29

T 1 N R 14 E

TYPE MONUMENT P.K./WASHER

ON SURFACE - ~~BELOW~~ ON

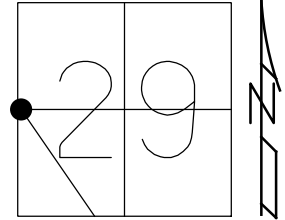
OFFSET C PAVEMENT ON LT : RT

10.5' TO RT EDGE PAVEMENT

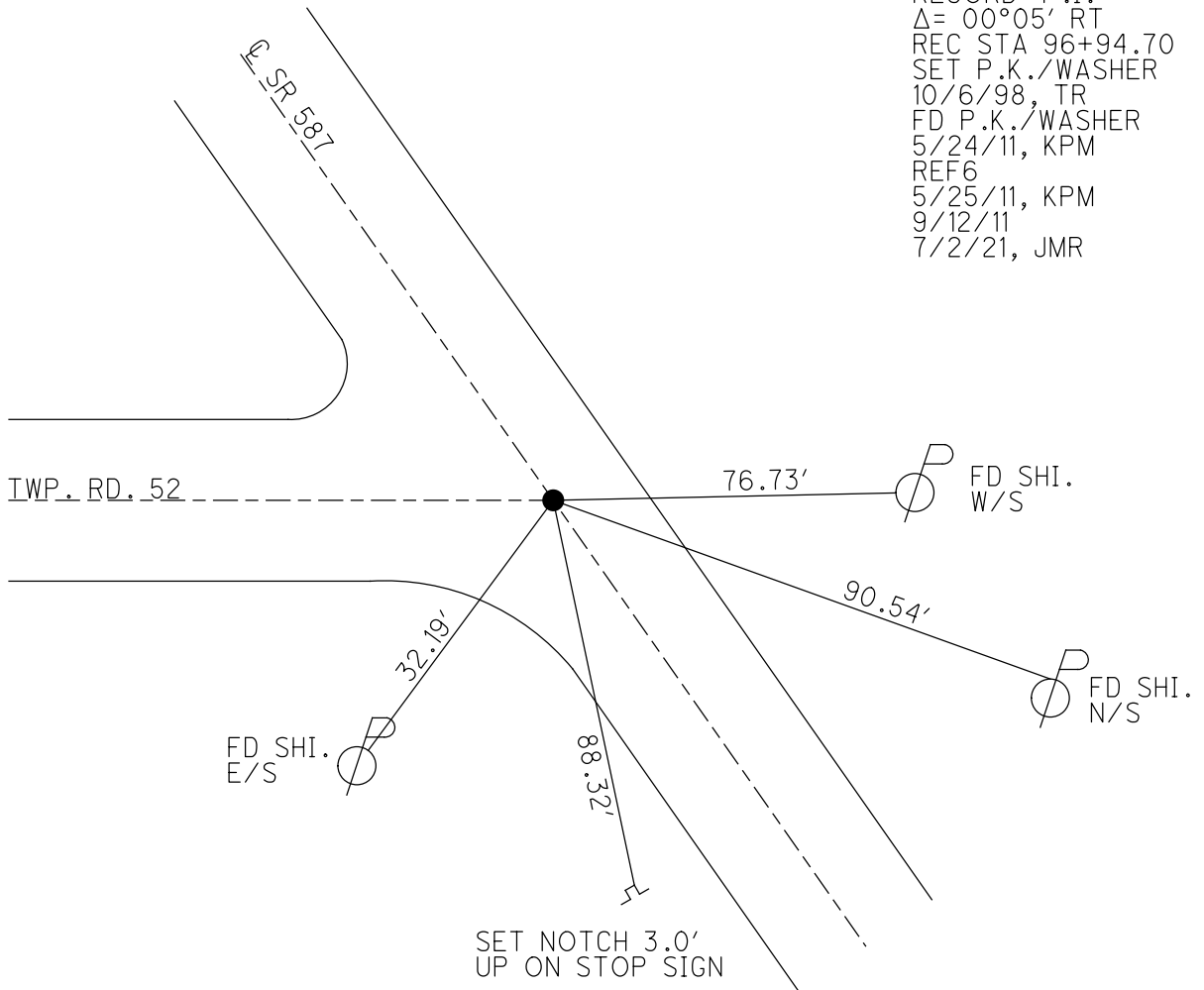
STATION: 96+94.70

HORZ.DATUM: _____ GEOID: _____

GRID: NORTHING: 491958.737 EASTING: 1751811.642



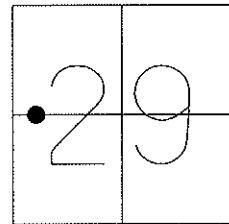
RECORD: P.I.
 $\Delta = 00^{\circ}05' RT$
 REC STA 96+94.70
 SET P.K./WASHER
 10/6/98, TR
 FD P.K./WASHER
 5/24/11, KPM
 REF6
 5/25/11, KPM
 9/12/11
 7/2/21, JMR



O.D.O.T. DISTRICT 2 SURVEY OFFICE

PERSONNEL	REFERENCE NO. <u>6</u>	SHEET <u>8</u> OF <u>30</u>
NOTES FINGER _____	DATE <u>5-24-11</u>	ROUTE <u>SR 587</u>
H.C. <u>MOSER</u>	WEATHER <u>OVERCAST</u>	COUNTY <u>SENECA</u>
R.C. <u>HARBAUGH</u>	TEMP. <u>65°</u>	TOWNSHIP <u>SENECA</u>
_____	_____	SECTION <u>29</u>
_____	_____	T <u>1</u> N R <u>14</u> E

TYPE MONUMENT PK WASHER
 ON SURFACE - ~~BELOW~~ ON _____
~~LEFT~~ - Q PAV'T - ~~RIGHT~~ ON _____
10.5' TO RT. EDGE PAVEMENT
 S.L.M. 96+94.70



Grid: Northing: 491958.737 Easting: 1751811.642

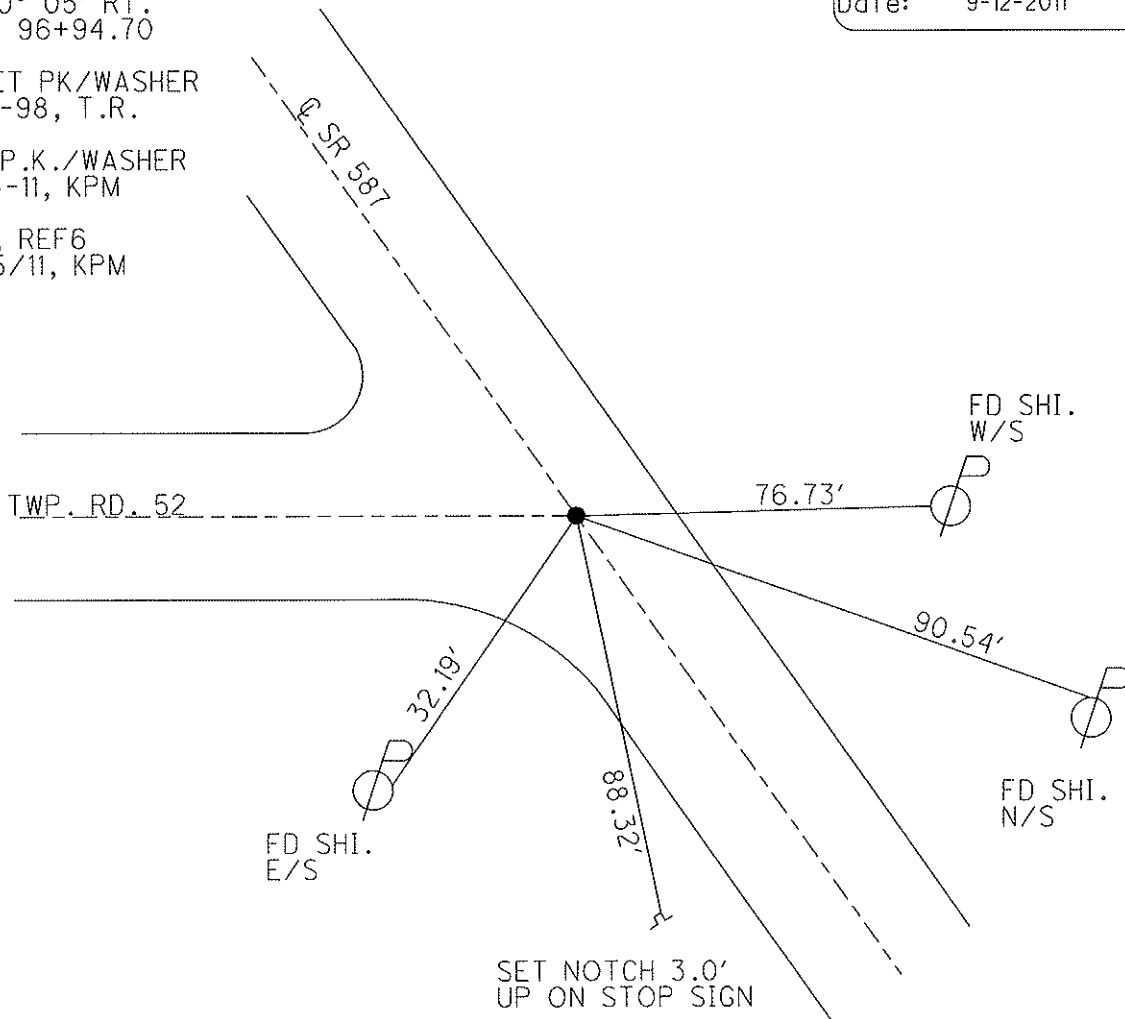
RECORD PI:
 $\Delta = 0^\circ 05' \text{ RT.}$
 REC. 96+94.70

RESET PK/WASHER
 10-6-98, T.R.

FD. P.K./WASHER
 5-24-11, KPM

GPS, REF6
 5/25/11, KPM

Preventative Maintenance
 Chip & Seal
 Existing Point Uncovered
 Date: 9-12-2011



O.D.O.T. DISTRICT 2 SURVEY OFFICE

PERSONNEL

REFERENCE NO. 6

SHEET 7 OF 24

NOTES CANTERBURY

H.C. Rousos

R.C. LOEHAKE

DATE 5/4/98

WEATHER OVERCAST

TEMP. +63° F

ROUTE 587

COUNTY Seneca

TOWNSHIP Seneca

SECTION 29

T1 N R14 E

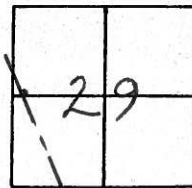
TYPE MONUMENT PK + Washer. Atop RR Spike

ON SURFACE - ~~BELOW~~ on surface

~~LEFT~~ PAV'T. - ~~RIGHT~~ PAV'T.

7.3' TO RT EDGE PAVEMENT

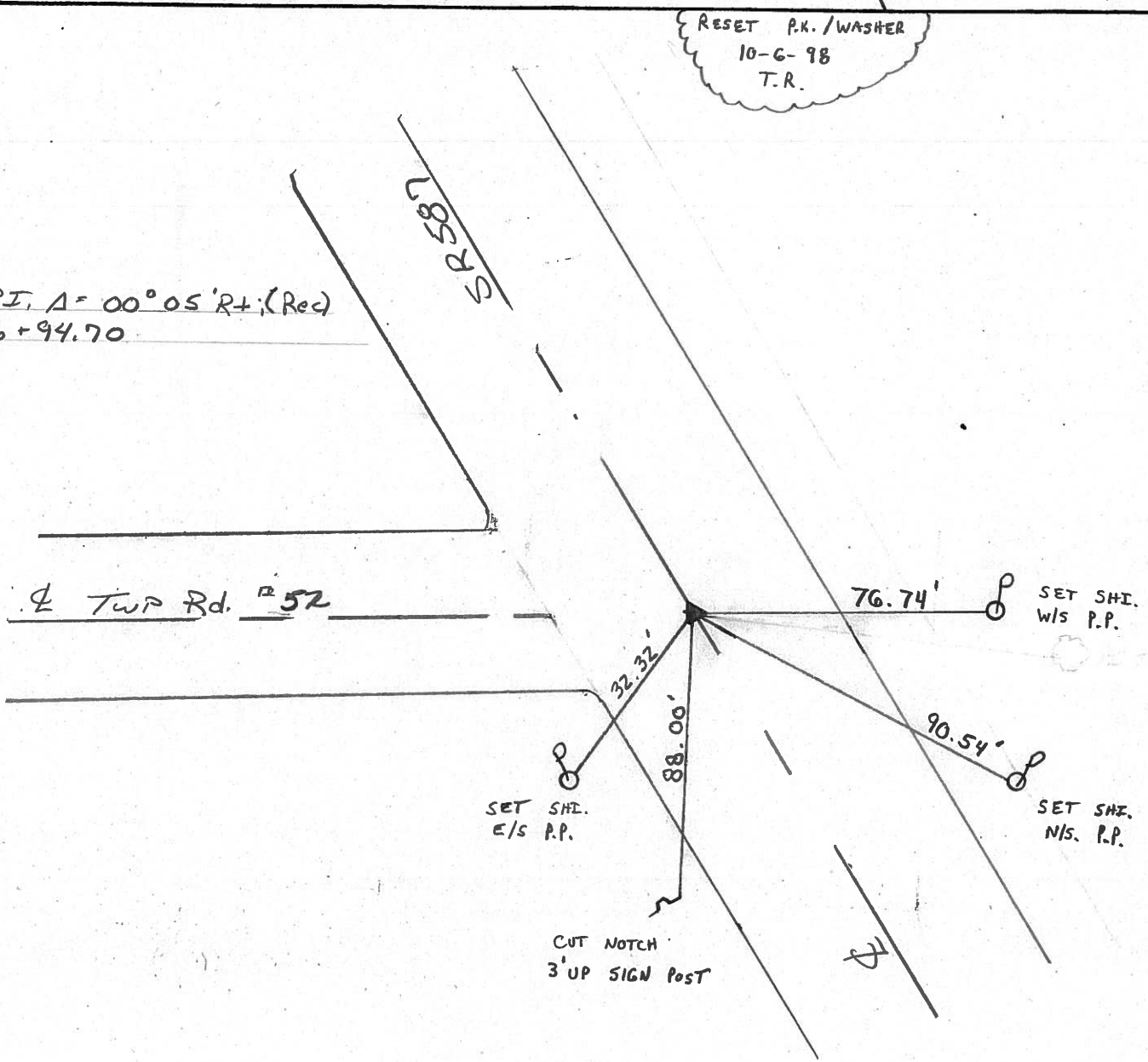
S.L.M. 1,836 ± / 2+947.38 SLK



RESET P.K. / WASHER
 10-6-98
 T.R.

PI, A = 00° 05' R+; (Rec)
 96+94.70

2 TWP Rd. # 52



O.D.O.T. DISTRICT 2 SURVEY OFFICE

PERSONNEL

REFERENCE NO. 6

SHEET 7 OF

NOTES CRONIN

H.C. BARBOUR

R.C. GEYMAN

DATE 8/20/85

WEATHER SUNNY

TEMP. 68°

ROUTE #587

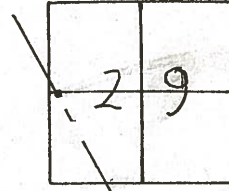
COUNTY SENECA

TOWNSHIP SENECA

SECTION 29

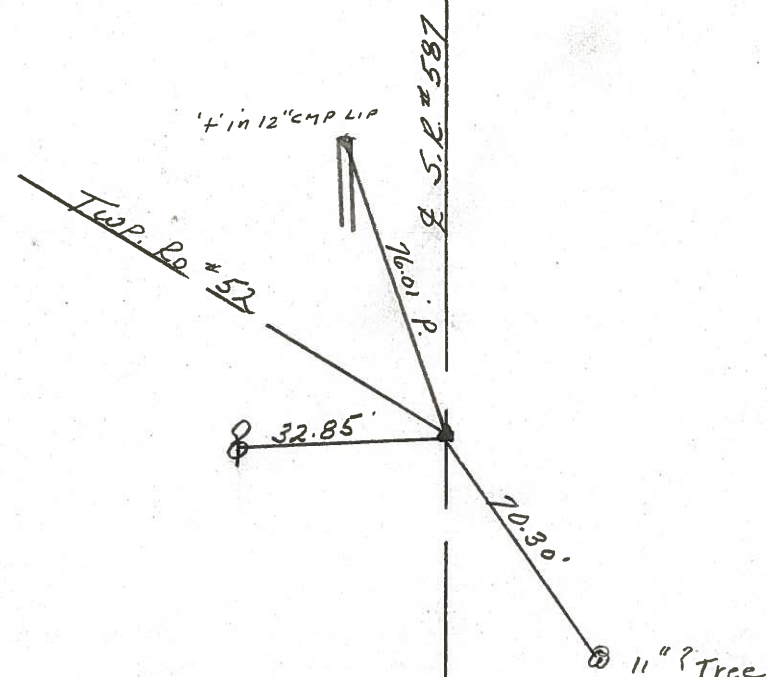
T. 1 N R. 14 E

TYPE MONUMENT P.K. FUMSER TOP RR. SPIKE
 ON SURFACE - BELOW ON SURFACE
 LEFT - PAV'T. - RIGHT & PAINT.
 TO EDGE PAVEMENT
 S.L.M. 1.836 ±



P.I. Δ = 00°05' R.L. Rec.

96+94.70

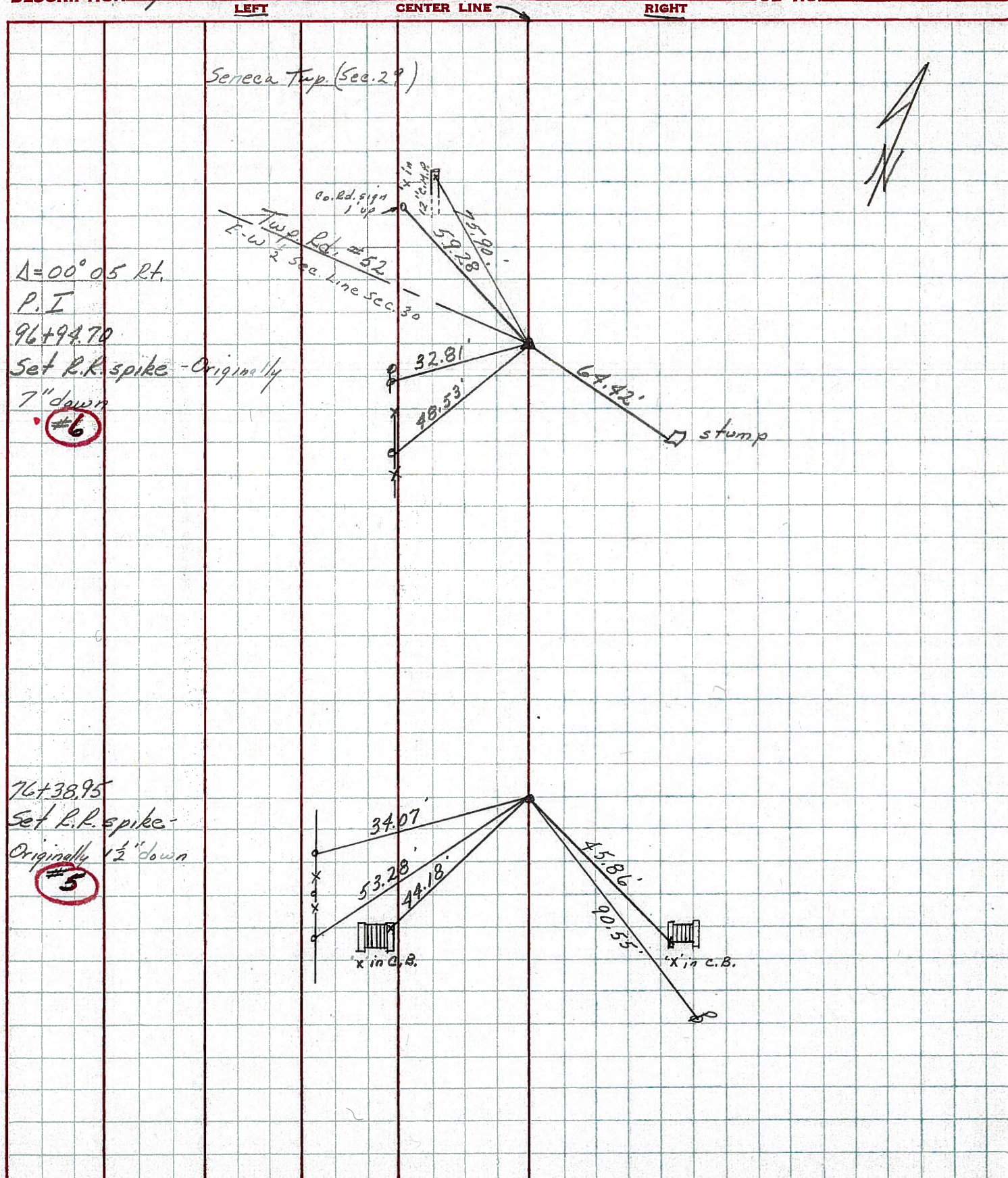


PERSONNEL	TITLE	PERSONNEL	TITLE
Ash - Vac.			
Cronin			
Ripple			
Anderson			

COUNTY Seneca DATE 9/20/72
 S. R. #587 WEATHER sunny
 SEC. _____ TEMP. 70°

DESCRIPTION Wyandot-Seneca Co. Line - Northwest

JOB NO. _____

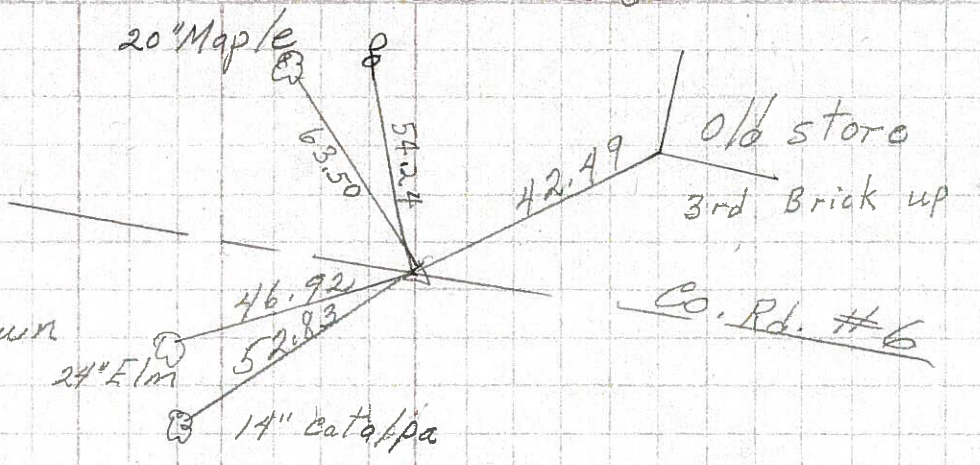


PERSONNEL	TITLE	PERSONNEL	TITLE	COUNTY	DATE
Schneider				Seneca	10-31-69
Mosser				S. R. 587	WEATHER cloudy
Barbour				SEC.	TEMP. 55°
Potts					

DESCRIPTION Wyandot Co. Line to New Reigel JOB NO. _____

8

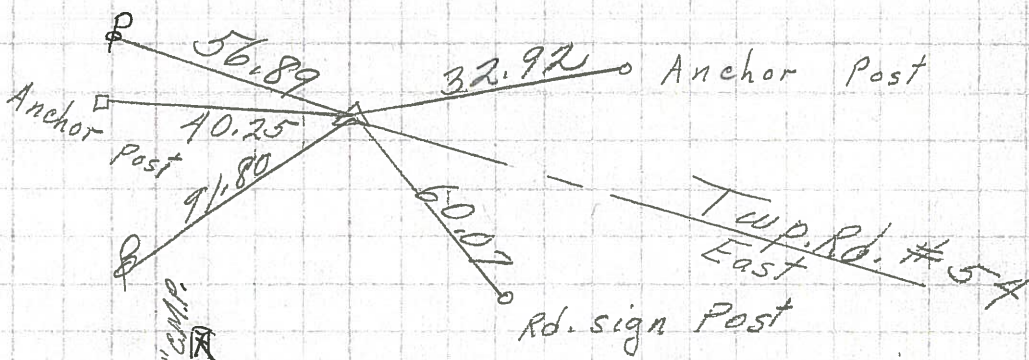
160+76.3
R.R. spk. 2" down
on & R/W
 $\Delta = 0^\circ 11' \text{ Rt}$



8718

7

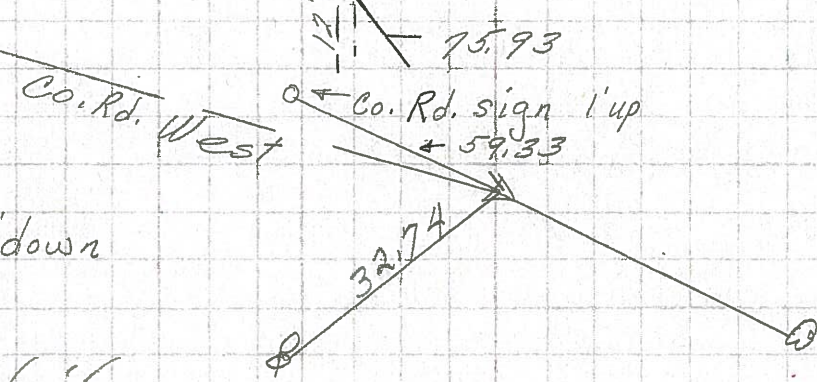
128+66.7
R.R. spk. 1/2" down
on & R/W
 $\Delta = 0^\circ 11' \text{ Rt}$



8717

6

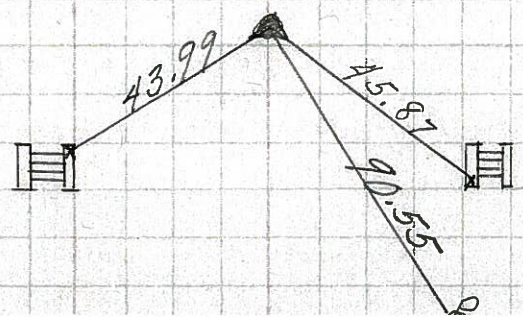
96+94.7
R.R. spk. 1/2" down
on & R/W
 $\Delta = 0^\circ 05'$
set P.K. Nail



8716

5

P.O.T.
76+38.95
R.R. spk. 1/2" down
on & R/W
 $\Delta = 0^\circ 00'$



8715