

O.D.O.T. DISTRICT 2 SURVEY OFFICE (USE ONLY)

PERSONNEL

REFERENCE NO. 7

SHEET 9 OF 30

NOTES FINGER  
 H.C. MOSER  
 R.C. HARBAUGH

DATE 5/24/11  
 WEATHER OVERCAST  
 TEMP. 65°

ROUTE SR 587  
 COUNTY SENECA  
 TOWNSHIP SENECA  
 SECTION 30  
 T 1 N R 14 E

DWG BY NIESE PID PAVE TRAIN

TYPE MONUMENT P.K./WASHER

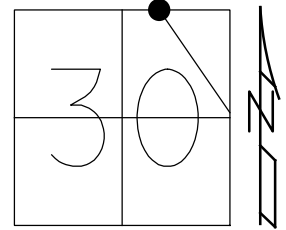
ON SURFACE - ~~BELOW~~ ON

OFFSET Q PAVEMENT ON LT : RT  
11.0' TO LT EDGE PAVEMENT

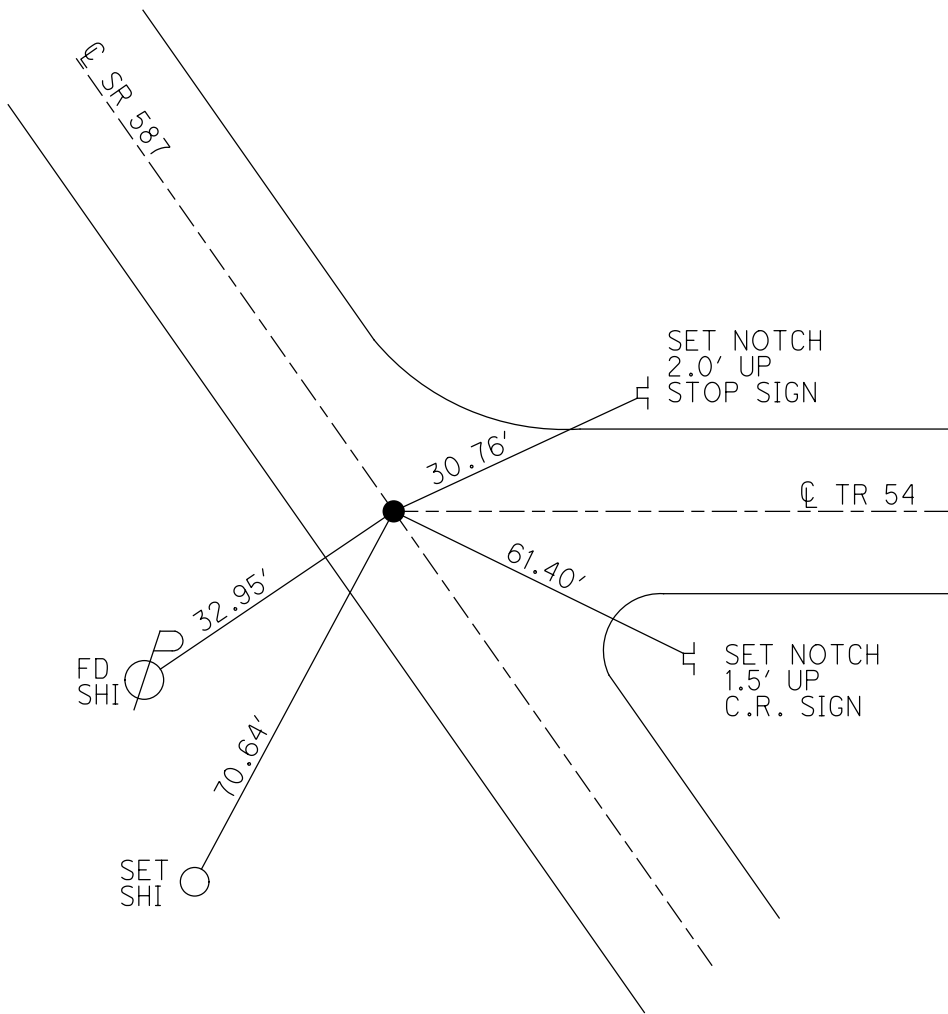
STATION: 128+67

HORZ.DATUM: NAD83 GEOID: 2009

GRID: NORTHING: 494607.200 EASTING: 1750060.270



RECORD: P.I.  
 $\Delta = 00^{\circ}11'$  RT  
 REC STA 128+66.70  
 SET P.K./WASHER  
 10/6/98, TR  
 FD P.K./WASHER  
 5/24/11, KPM  
 REF7  
 5/25/11, KPM  
 9/12/11  
 FD R.R.SPIKE  
 3" DOWN  
 7/2/21, JMR



O.D.O.T. DISTRICT 2 SURVEY OFFICE (USE ONLY)

PERSONNEL \_\_\_\_\_

REFERENCE NO. 7

SHEET 9 OF 30

NOTES FINGER

DATE 5/24/11

ROUTE SR 587

H.C. MOSER

WEATHER OVERCAST

COUNTY SENECA

R.C. HARBAUGH

TEMP. 65°

TOWNSHIP SENECA

SECTION 30

DWG BY NIESE PID PAVE TRAIN

T 1 N R 14 E

TYPE MONUMENT P.K./WASHER

ON SURFACE - ~~BELOW~~ ON

OFFSET ☉ PAVEMENT ON LT : RT

11.0' TO LT EDGE PAVEMENT

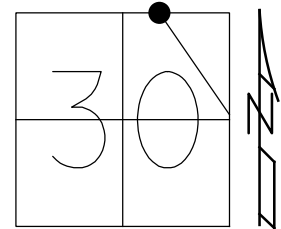
STATION: 128+67

HORZ.DATUM: \_\_\_\_\_

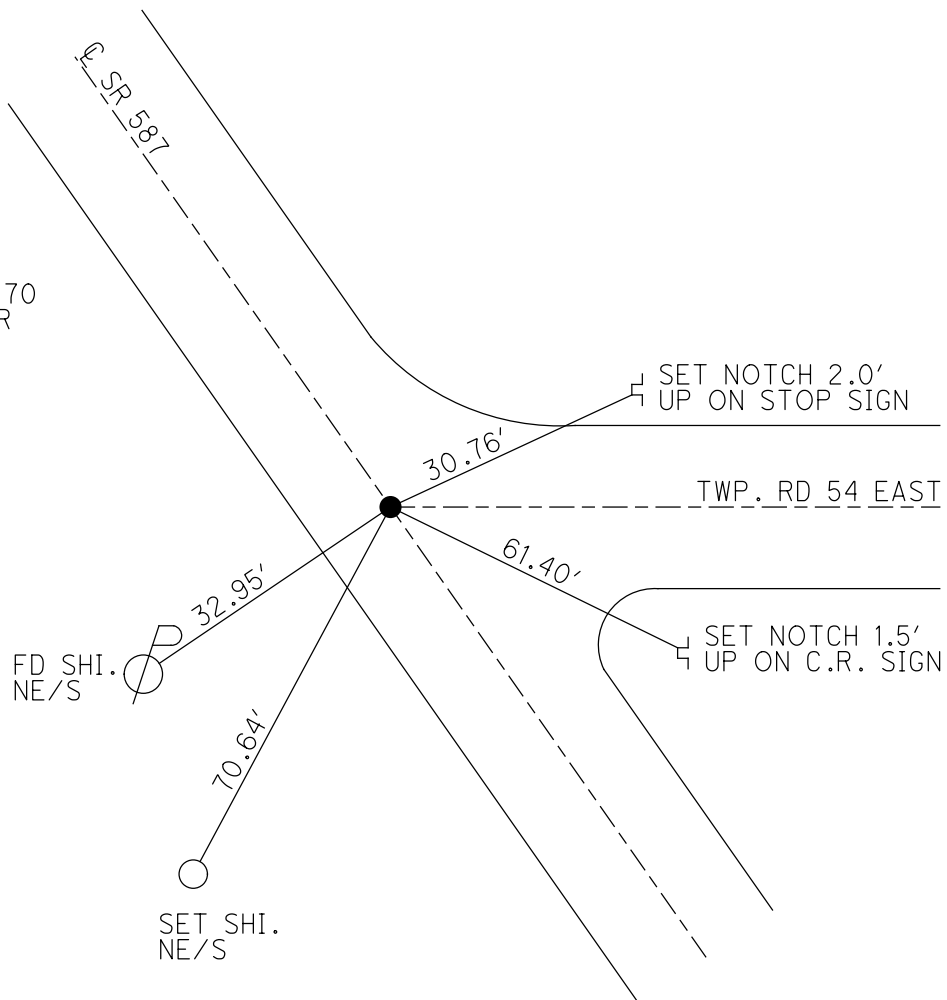
GEOID: \_\_\_\_\_

GRID: NORTHING: 494607.200

EASTING: 1750060.270



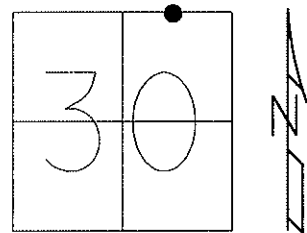
RECORD: P.I.  
 $\Delta = 00^{\circ}11' RT$   
 REC STA 128+66.70  
 SET P.K./WASHER  
 10/6/98, TR  
 FD P.K./WASHER  
 5/24/11, KPM  
 REF 7  
 5/25/11, KPM  
 9/12/11  
 FD R.R.SPIKE  
 3" DOWN  
 7/2/21, JMR



O.D.O.T. DISTRICT 2 SURVEY OFFICE

PERSONNEL	REFERENCE NO. <u>7</u>	SHEET <u>9</u> OF <u>30</u>
NOTES FINGER _____	DATE <u>5-24-11</u>	ROUTE <u>SR 587</u>
H.C. <u>MOSER</u>	WEATHER <u>OVERCAST</u>	COUNTY <u>SENECA</u>
R.C. <u>HARBAUGH</u>	TEMP. <u>65°</u>	TOWNSHIP <u>SENECA</u>
_____	_____	SECTION <u>30</u>
_____	_____	T <u>1</u> N R <u>14</u> E

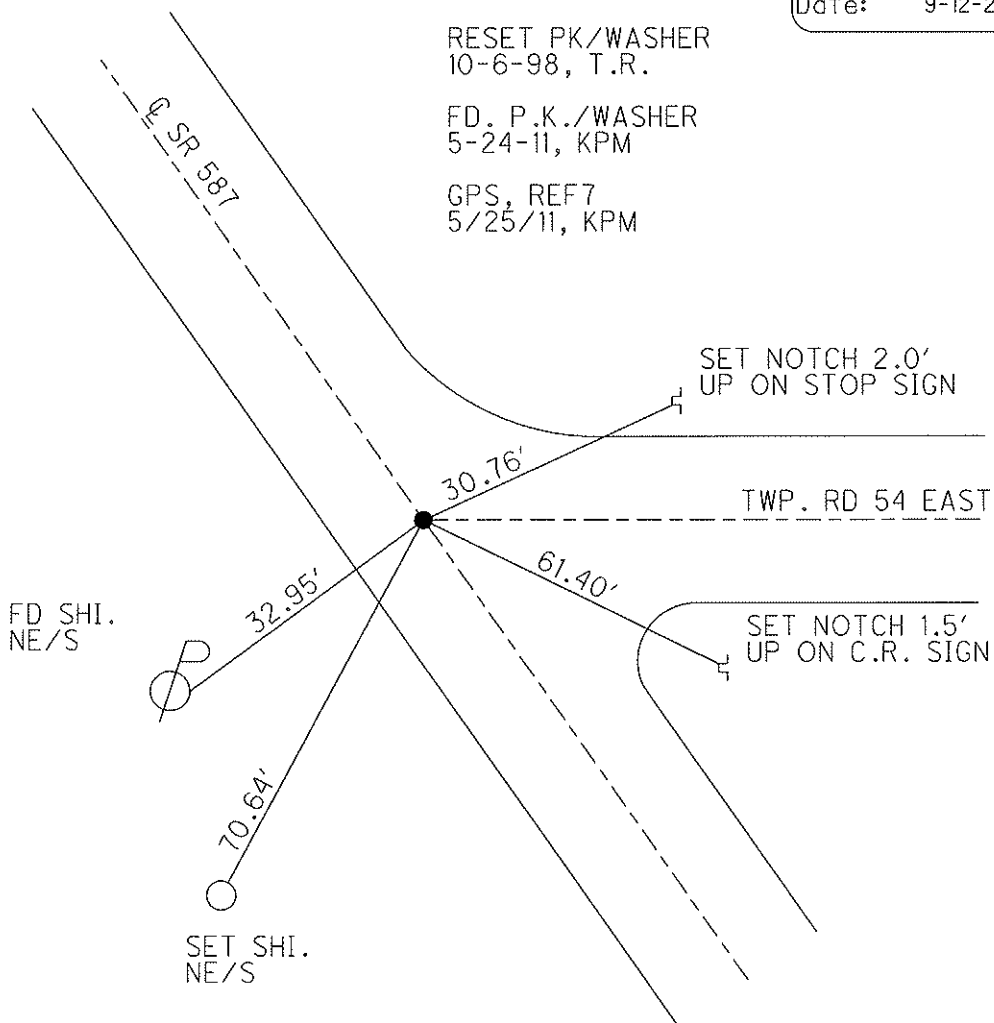
TYPE MONUMENT PK WASHER  
 ON SURFACE - ~~BELOW~~ ON \_\_\_\_\_  
~~LEFT~~ - Q PAV'T - ~~RIGHT~~ ON \_\_\_\_\_  
11.0' TOLT. EDGE PAVEMENT  
 S.L.M. 128+67



Grid: Northing: 494607.200 Easting: 1750060.270

RECORD PI:  
 $\Delta = 0^\circ 11' RT.$   
 REC. 128+66.70  
 RESET PK/WASHER  
 10-6-98, T.R.  
 FD. P.K./WASHER  
 5-24-11, KPM  
 GPS, REF7  
 5/25/11, KPM

Preventative Maintenance  
 Chip & Seal  
 Existing Point Uncovered  
 Date: 9-12-2011



# O.D.O.T. DISTRICT 2 SURVEY OFFICE

PERSONNEL

REFERENCE NO. 7

SHEET 8 OF 24

NOTES CANTERBURY

H.C. Rausos

R.C. LOENRKE

DATE 5/4/98

WEATHER OVERCAST

TEMP. +63° F

ROUTE 587

COUNTY SENECA

TOWNSHIP SENECA

SECTION 30

T1N R4E

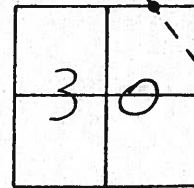
TYPE MONUMENT P.K. & Washer ATop RR. SPK

ON SURFACE - ~~BELOW~~ ON surface

LEFT- CL PAV'T. - RIGHT CL Pmnt

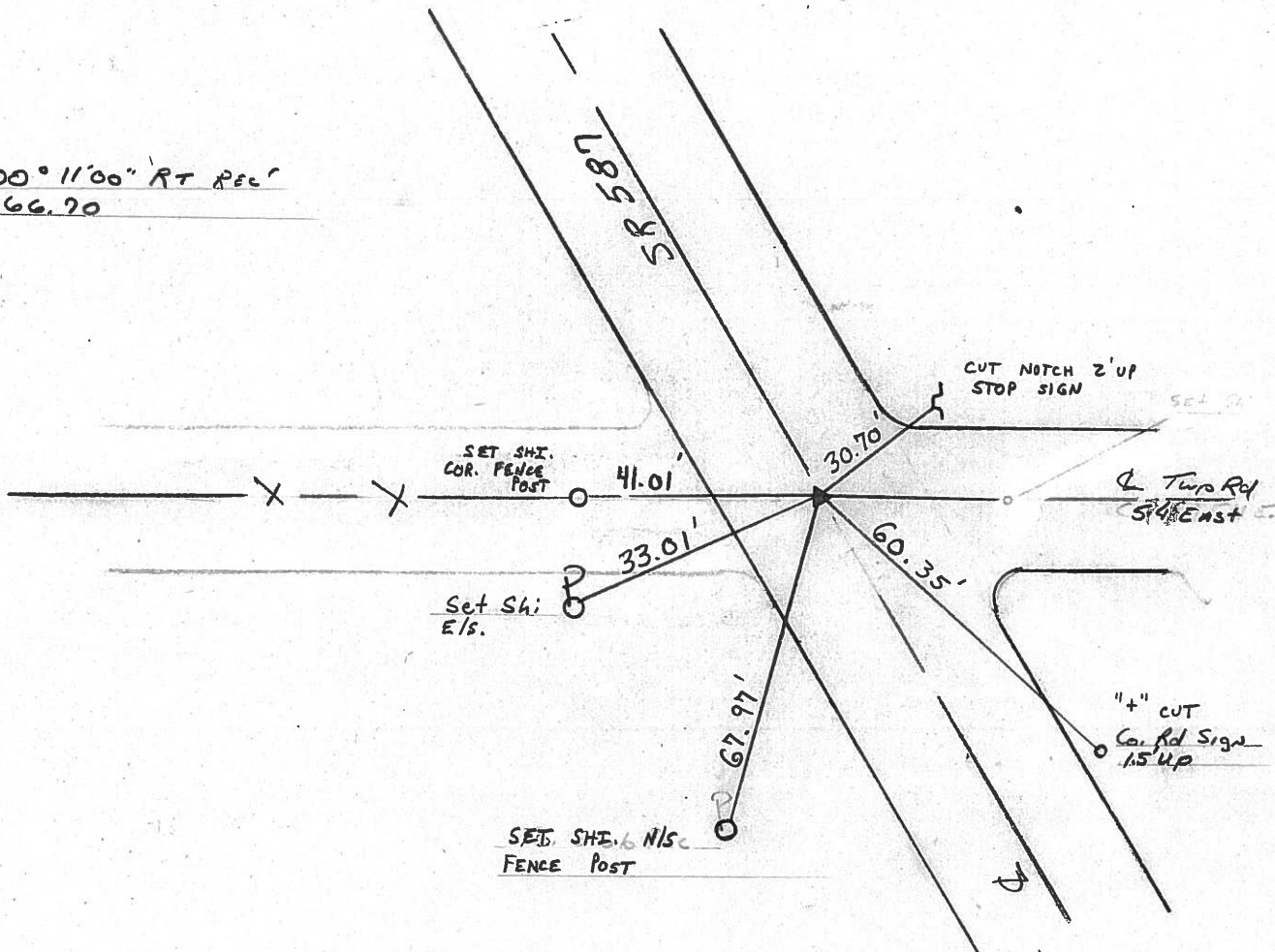
7.4' TO LT. EDGE PAVEMENT

S.L.M. 2+437 ± / 3+914.63 SLK



RESET P.K./WASHER  
 10-6-98  
 T.R.

$P.I.A = 00^{\circ} 11' 00''$  RT REC  
 128+66.70



# O.D.O.T. DISTRICT 2 SURVEY OFFICE

PERSONNEL

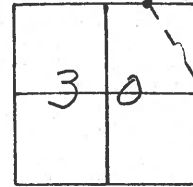
NOTES CRONIN  
 H.C. RIPPLE  
 R.C. BARBOUR  
GEYMAN

REFERENCE NO. 7  
 DRAWN 8/29/85  
 DATE 8/26/85  
 WEATHER OVERCAST  
 TEMP. 60°

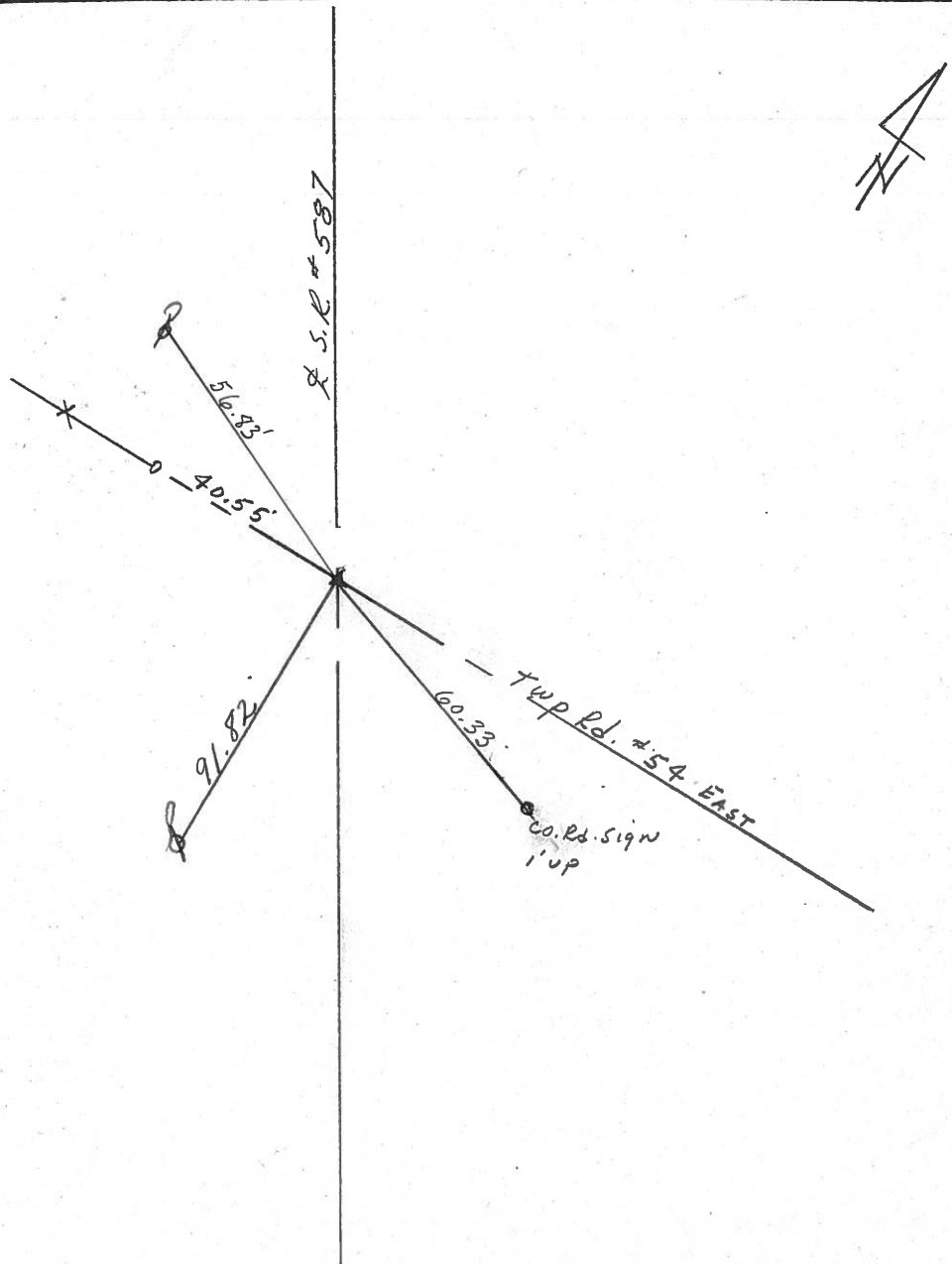
SHEET 8 OF       

ROUTE #587  
 COUNTY SENECA  
 TOWNSHIP SENECA  
 SECTION 30  
T 1 N R 14 E

TYPE MONUMENT P.K. & WASHER ATOP R.R. SPK.  
 ON SURFACE - BELOW ON SURFACE  
 LEFT - Q PAV'T. - RIGHT Q PAVMT.  
 TO EDGE PAVEMENT  
 S.L.M. 2.437 ±

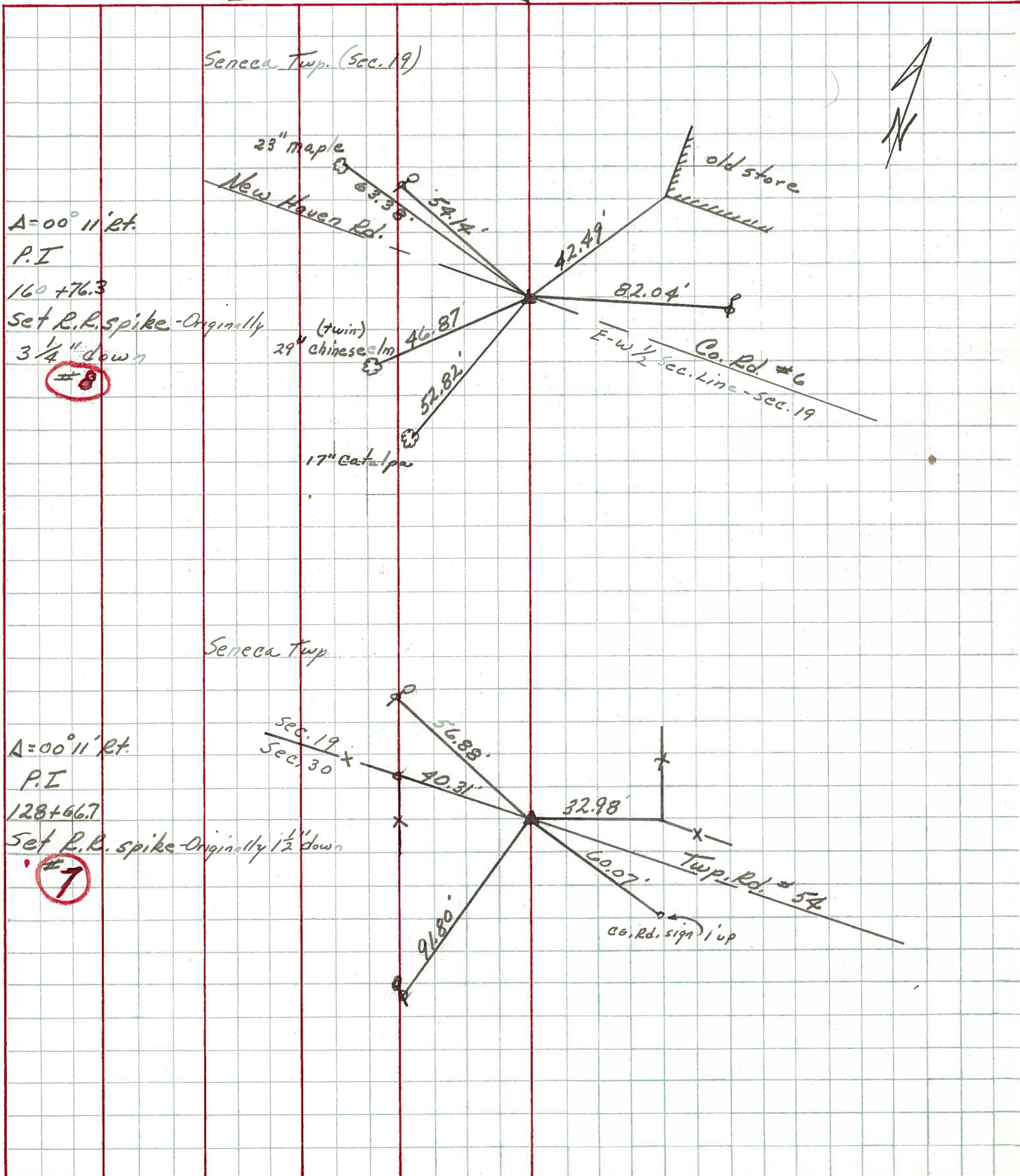


P.I. Δ = 00°11'00" Rt. Rec.  
128466.70



PERSONNEL	TITLE	PERSONNEL	TITLE	COUNTY	DATE
Ash-Vac				Seneca	9/22/72
Cronin				S. R. #587	WEATHER sunny
Ripple				SEC.	TEMP. 54°
Anderson					

DESCRIPTION Wyandot-Seneca Co. Line - Northwest JOB NO. \_\_\_\_\_





PERSONNEL TITLE PERSONNEL TITLE

Schneider  
 Mosser  
 Barbour  
 Potts

COUNTY Seneca

DATE 10-31-69

S. R. 587

WEATHER cloudy

SEC.

TEMP. 53°

DESCRIPTION

Wyandot Co. Line to New Reigel

JOB NO.

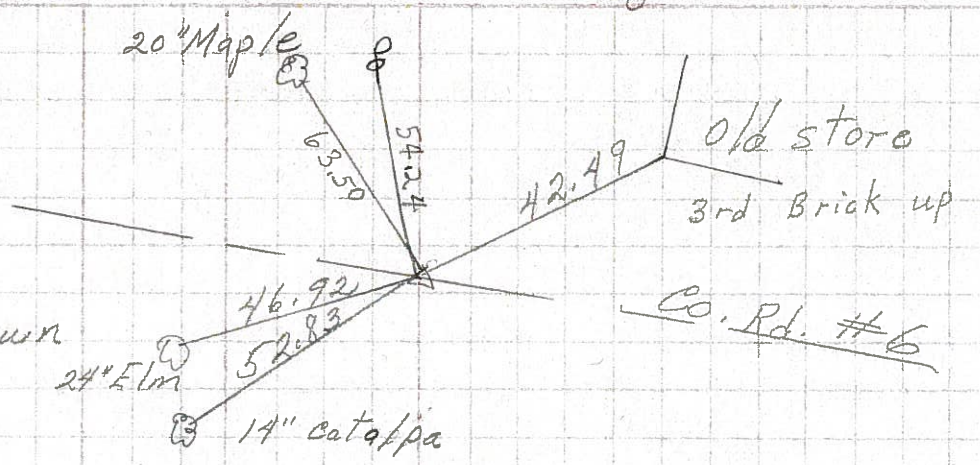
LEFT

CENTER LINE

RIGHT

8

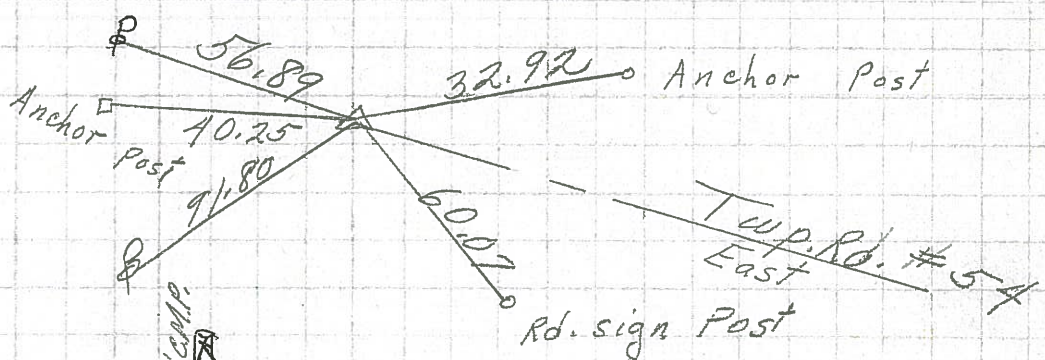
160+76.3  
 R.R. spk. 2" down  
 on & R/W  
 $\Delta = 0^\circ 11' \text{ Rt}$



8718

7

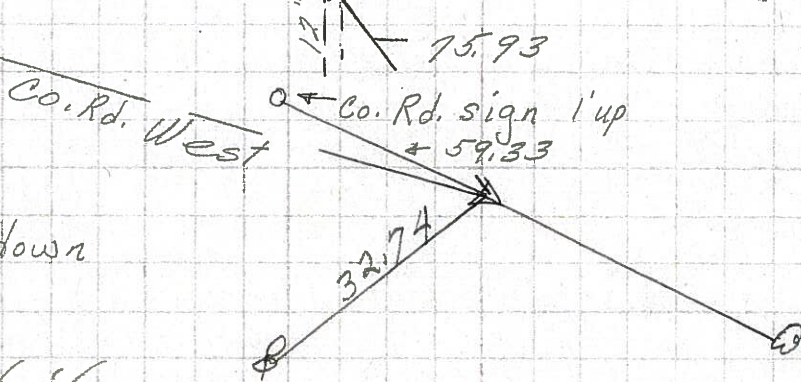
128+66.7  
 R.R. spk. 1/2" down  
 on & R/W  
 $\Delta = 0^\circ 11' \text{ Rt}$



8717

6

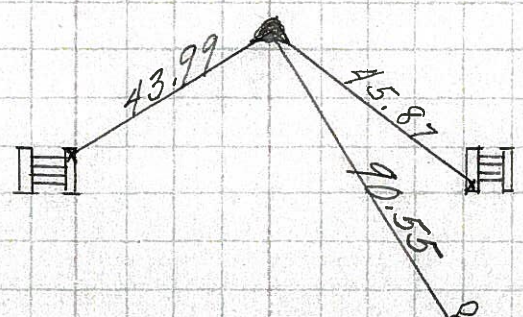
96+99.7  
 R.R. spk. 1 1/2" down  
 on & R/W  
 $\Delta = 0^\circ 05'$   
 set P.K. Nail



8716

5

P.O.T.  
 76+38.95  
 R.R. spk. 1 1/2" down  
 on & R/W  
 $\Delta = 0^\circ 00'$



8715