

O.D.O.T. DISTRICT 2 SURVEY OFFICE (USE ONLY)

PERSONNEL

REFERENCE NO. 9

SHEET 11 OF 30

NOTES FINGER

DATE 5/24/11

ROUTE SR 587

H.C. MOSER

WEATHER OVERCAST

COUNTY SENECA

R.C. HARBAUGH

TEMP. 65°

TOWNSHIP SENECA

SECTION 19

DWG BY NIESE PID PAVE TRAIN

T 1 N R 14 E

TYPE MONUMENT P.K./WASHER

ON SURFACE - ~~BELOW~~ ON

OFFSET 9.8' TO RT EDGE PAVEMENT

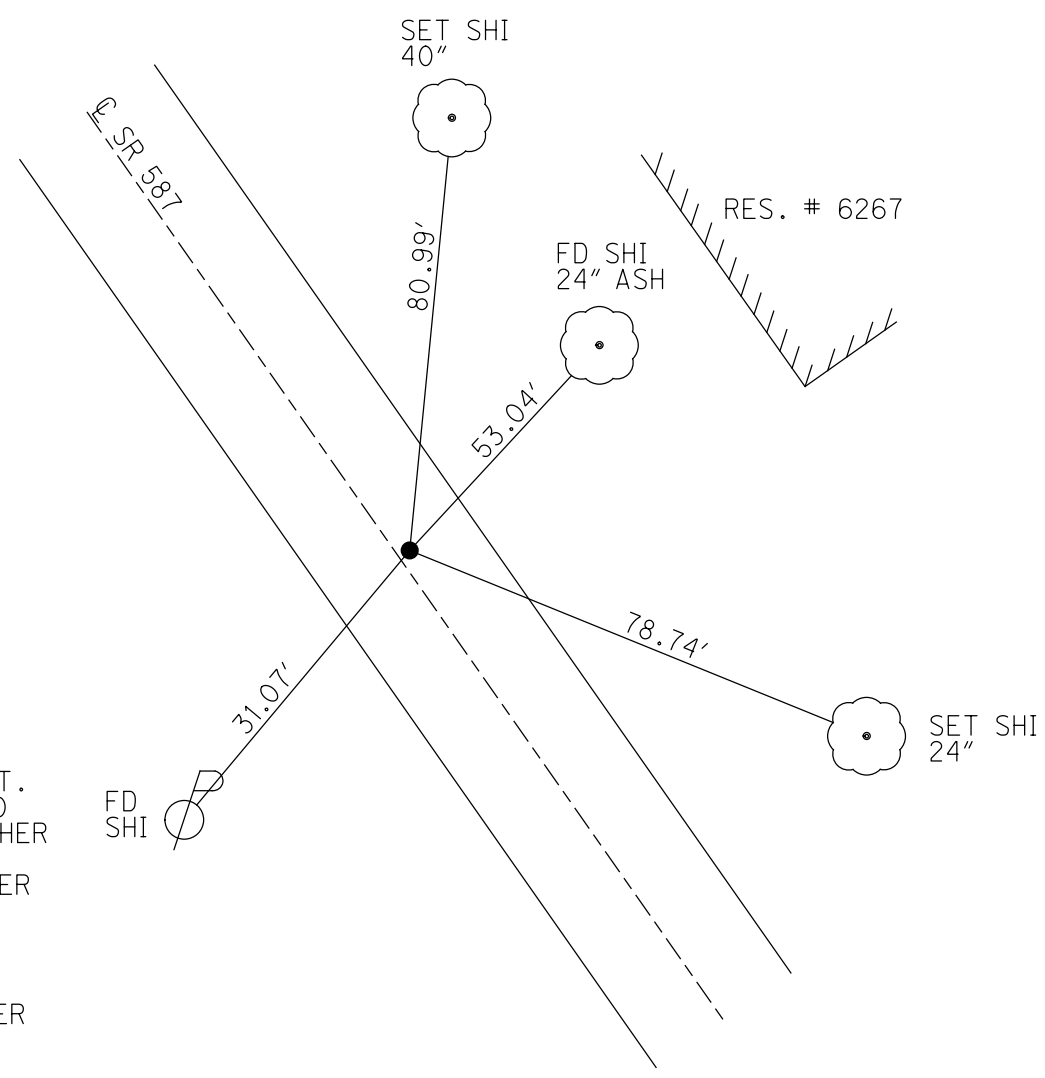
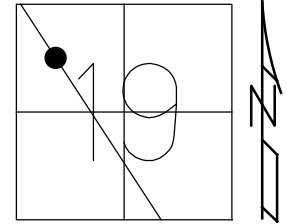
STATION: 176+58.50

HORIZ.DATUM: NAD83

GEOID: 2009

GRID: NORTHING: 498610.083

EASTING: 1747437.426



RECORD: P.O.T.
 STA 176+57.50
 SET P.K./WASHER
 10/6/98, TR
 FD P.K./WASHER
 5/24/11, KPM
 REF9
 5/25/11, KPM
 9/12/11
 FD MAG/WASHER
 7/2/21, JMR

O.D.O.T. DISTRICT 2 SURVEY OFFICE (USE ONLY)

PERSONNEL

REFERENCE NO. 9

SHEET 11 OF 30

NOTES FINGER

DATE 5/24/11

ROUTE SR 587

H.C. MOSE

WEATHER OVERCAST

COUNTY SENECA

R.C. HARBAUGH

TEMP. 65°

TOWNSHIP SENECA

SECTION 19

DWG BY NIESE

PID PAVE TRAIN

T 1 N R 14 E

TYPE MONUMENT P.K./WASHER

ON SURFACE - ~~BELOW~~ ON

OFFSET 1.0' RT : RT

9.8' TO RT EDGE PAVEMENT

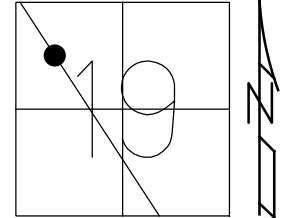
STATION: 176+58.50

HORZ.DATUM: _____

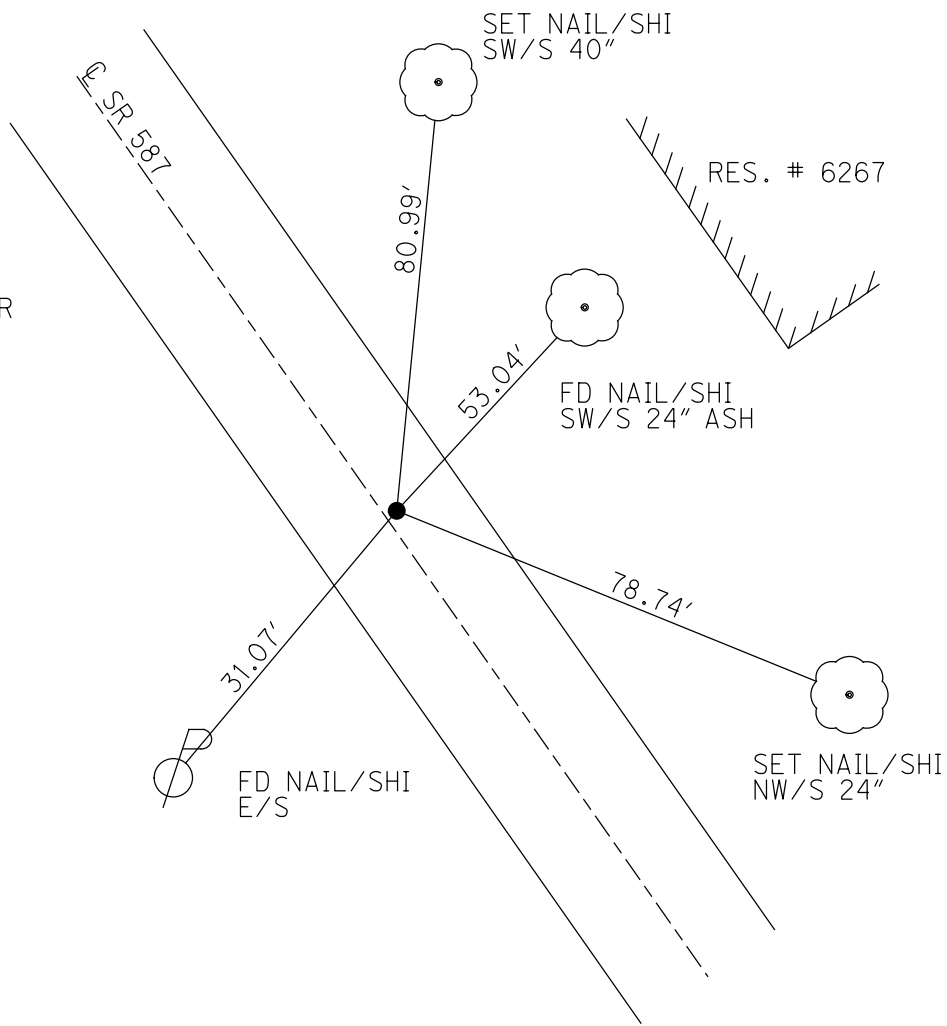
GEOID: _____

GRID: NORTHING: 498610.083

EASTING: 1747437.426



RECORD:
 ASSUMED P.O.T.
 STA 176+57.50
 SET P.K./WASHER
 10/6/98, TR
 FD P.K./WASHER
 5/24/11, KPM
 REF9
 5/25/11, KPM
 9/12/11
 FD MAG/WASHER
 7/2/21, JMR



O.D.O.T. DISTRICT 2 SURVEY OFFICE

PERSONNEL _____

REFERENCE NO. 9

SHEET 11 OF 30

NOTES FINGER _____

DATE 5-24-11

ROUTE SR 587

H.C. MOSER

WEATHER OVERCAST

COUNTY SENECA

R.C. HARBAUGH

TEMP. 65°

TOWNSHIP SENECA

SECTION 19

T 1 N R 14 E

TYPE MONUMENT PK/WASHER

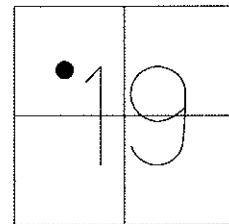
ON SURFACE - ~~BELOW~~ ON _____

~~LEFT - C PAV'T~~ - RIGHT 1.0'

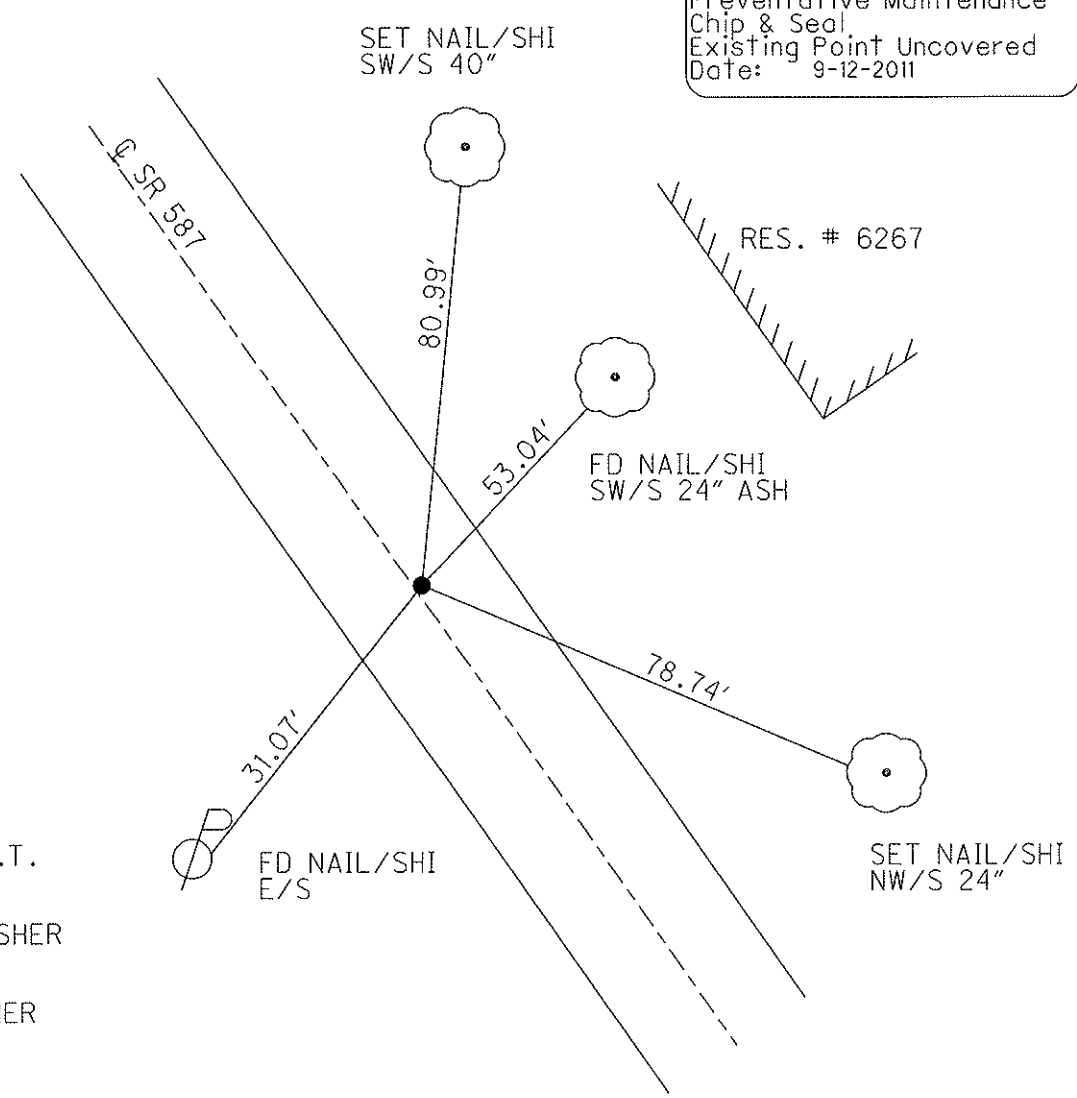
9.8' TO RT. EDGE PAVEMENT

S.L.M. 176+58.5

Grid: Northing: 498610.083 Easting: 1747437.426



Preventative Maintenance
Chip & Seal
Existing Point Uncovered
Date: 9-12-2011



RECORD:
ASSUMED P.O.T.
176+57.5

RESET PK/WASHER
10-6-98, T.R.

FD P.K./WASHER
5/24/11, KPM

GPS, REF 9
5/25/11, KPM

O.D.O.T. DISTRICT 2 SURVEY OFFICE

PERSONNEL

REFERENCE NO. 9

SHEET 10 OF 24

NOTES CANTERBURY

H.C. Rousos

R.C. LOENRKE

DATE 5-4-98

WEATHER OVERCAST

TEMP. + 63° F

ROUTE 587

COUNTY SENECA

TOWNSHIP SENECA

SECTION 19

T1 N R 14 E

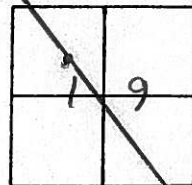
TYPE MONUMENT P.K. Washer ATOP RR spk.

ON SURFACE - ~~BELOW~~ ON Surface

~~LEFT-1/2 PAV T.~~ - RIGHT 1.9' Rt & Rmt

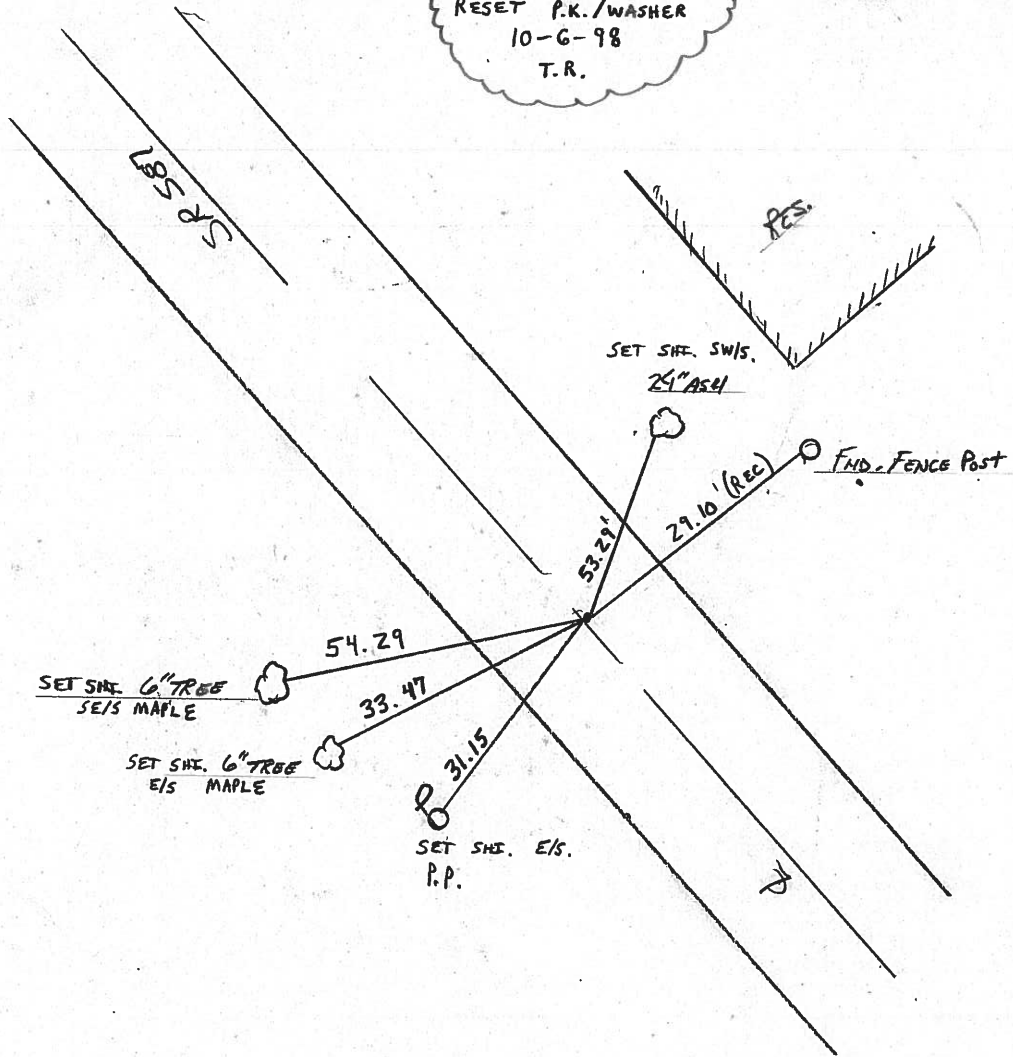
9.4' TO RT EDGE PAVEMENT

S.L.M. 3.344 ± / 5+372.87 SLK



RESET P.K./WASHER
 10-6-98
 T.R.

POT (ASSUMED)
 176+57.5



O.D.O.T. DISTRICT 2 SURVEY OFFICE

PERSONNEL

REFERENCE NO. 9

SHEET 10 OF

NOTES CRONIN

DRAWN 8/29/85

H.C. RIPPLE

DATE 8/26/85

R.C. BARBOUR

WEATHER SUNNY

ROUTE #587

COUNTY SENECA

GEYMAN

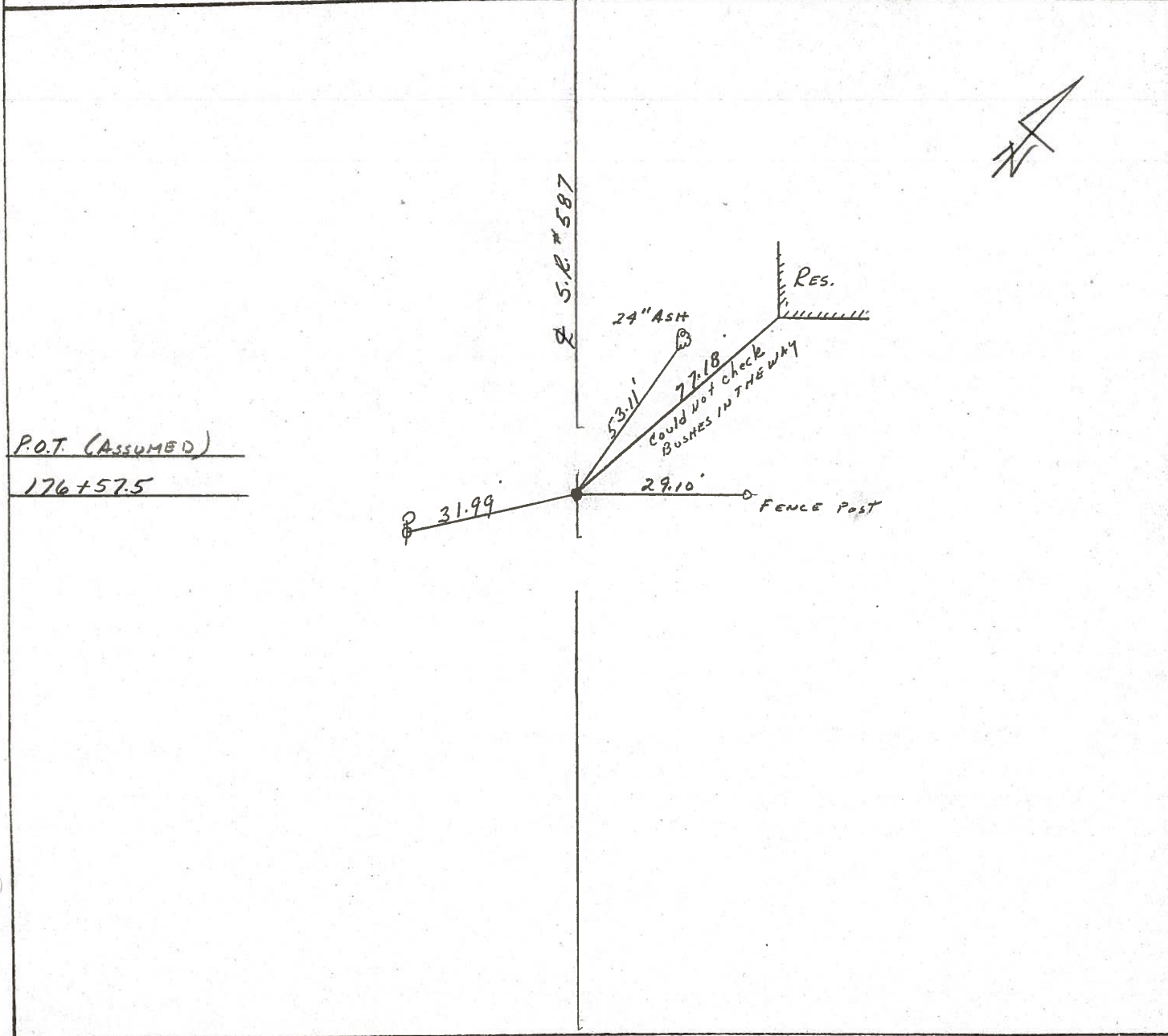
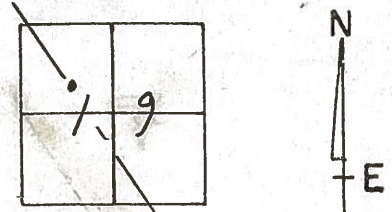
TEMP. 66°

TOWNSHIP SENECA

SECTION 19

T. 1 N. R. 14 E.

TYPE MONUMENT P.K. & WASHER AT OP P.R. SPK
 ON SURFACE - BELOW ON SURFACE
 LEFT - ☉ PAV'T. - RIGHT 1.5' RT. & PAV'T
 TO EDGE PAVEMENT
 S.L.M. 3.344 ±



PERSONNEL	TITLE	PERSONNEL	TITLE
Ash - Vac.			
Cronin			
Ripple			
Anderson			

COUNTY Seneca DATE 9/22/70
 S. R. #587 WEATHER sunny
 SEC. _____ TEMP. 55°

DESCRIPTION Wyandot-Seneca Co. Line - Northwest JOB NO. _____

