

O.D.O.T. DISTRICT 2 SURVEY OFFICE (USE ONLY)

PERSONNEL

REFERENCE NO. 11

SHEET 13 OF 30

NOTES MILLER  
 H.C. RHOADES  
 R.C. MILLER

DATE 12/28/23  
 WEATHER OVERCAST  
 TEMP. 46°

ROUTE SR 587  
 COUNTY SENECA  
 TOWNSHIP SENECA  
 SECTION 18  
 T 1 N R 14 E

DWG BY RHOADES PID PAVING TRAIN

TYPE MONUMENT R.R.SPIKE

~~ON SURFACE~~ - BELOW 3 1/2"

OFFSET  $\text{C}$  PAVEMENT ON LT : RT  
10.8' TO RT EDGE PAVEMENT

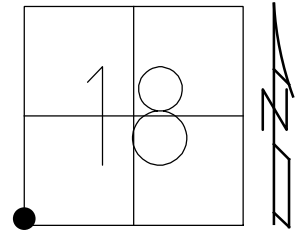
STATION: 194+15.19

HORZ.DATUM: NAD83 2011

GEOID: NAVD88 2018

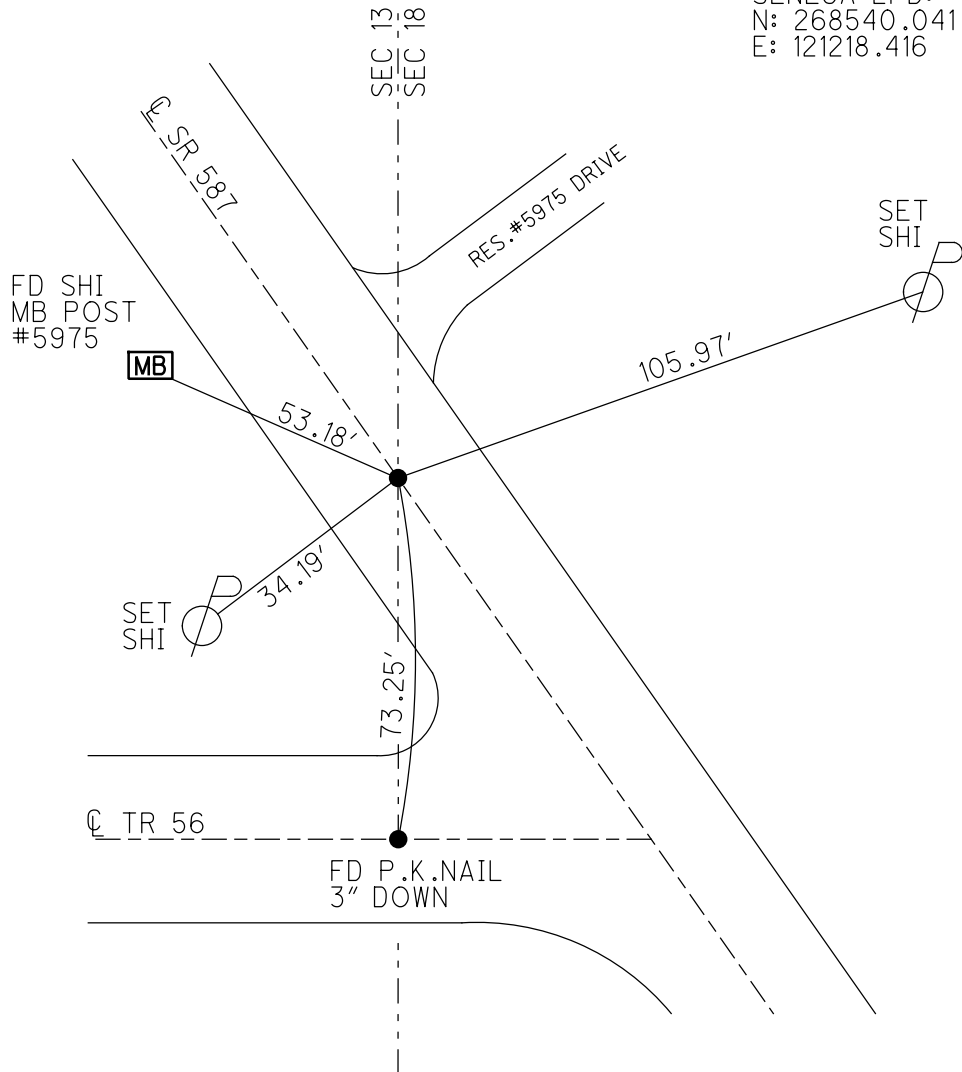
GRID: NORTHING: 500079.308

EASTING: 1746472.118



RECORD: P.O.T.  
 STA 194+16.20  
 SET P.K./WASHER  
 10/6/98, TMR  
 FD P.K./WASHER  
 5/24/11, KPM  
 REF11  
 5/26/11, KPM  
 9/12/11  
 7/1/15, JFO  
 COVERED  
 7/2/21, JMR  
 FD R.R.SPIKE  
 3 1/2" DOWN  
 REF11  
 9/15/21.  
 12/28/23, JMH

SENECA LPD:  
 N: 268540.041  
 E: 121218.416



O.D.O.T. DISTRICT 2 SURVEY OFFICE (USE ONLY)

PERSONNEL

REFERENCE NO. 11

SHEET 13 OF 30

NOTES FINGER

DATE 5/24/11

ROUTE SR 587

H.C. MOSER

WEATHER OVERCAST

COUNTY SENECA

R.C. HARBAUGH

TEMP. 65°

TOWNSHIP SENECA

SECTION 18

DWG BY NIESE PID PAVE TRAIN

T 1 N R 14 E

TYPE MONUMENT P.K./WASHER

ON SURFACE - ~~BELOW~~ ON

OFFSET Q PAVEMENT ON LT : RT

10.8' TO RT EDGE PAVEMENT

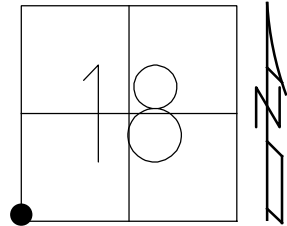
STATION: 194+15.19

HORZ.DATUM: NAD83

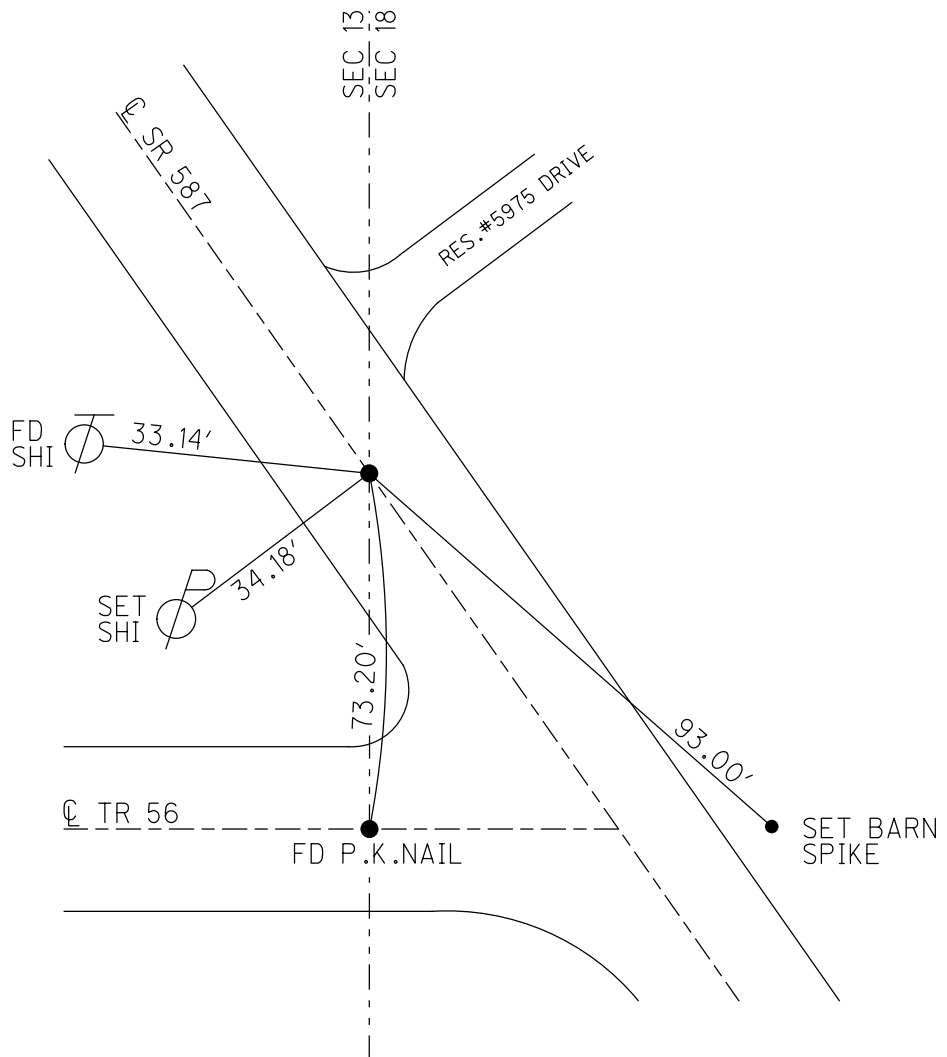
GEOID: 2009

GRID: NORTHING: 500079.280

EASTING: 1746472.144



RECORD:  
 ASSUMED P.O.T.  
 STA 194+16.20  
 SET P.K./WASHER  
 10/6/98, TMR  
 FD P.K./WASHER  
 5/24/11, KPM  
 REF 11  
 5/26/11, KPM  
 9/12/11  
 7/1/15, JFO  
 COVERED  
 7/2/21, JMR

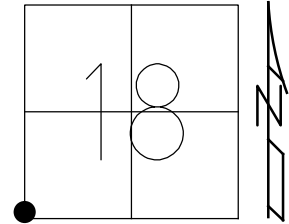


O.D.O.T. DISTRICT 2 SURVEY OFFICE (USE ONLY)

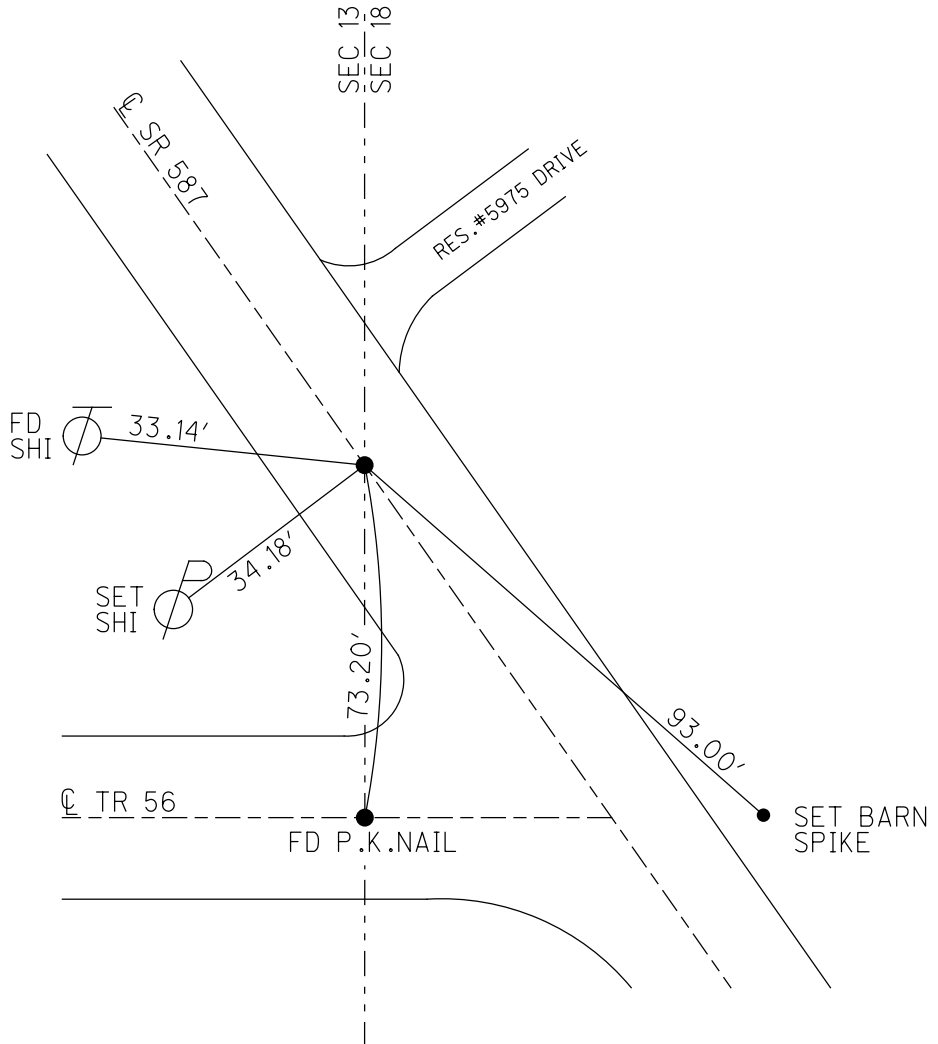
PERSONNEL \_\_\_\_\_ REFERENCE NO. 11 SHEET 13 OF 30  
 NOTES FINGER DATE 5/24/11 ROUTE SR 587  
 H.C. MOSER WEATHER OVERCAST COUNTY SENECA  
 R.C. HARBAUGH TEMP. 65° TOWNSHIP SENECA  
 DWG BY NIESE PID PAVE TRAIN SECTION 18  
 T 1 N R 14 E

TYPE MONUMENT P.K./WASHER  
 ON SURFACE - ~~BELOW~~ ON  
 OFFSET ☉ PAVEMENT ON LT : RT  
10.8' TO RT EDGE PAVEMENT  
 STATION: 194+15.19

HORZ.DATUM: \_\_\_\_\_ GEOID: \_\_\_\_\_  
 GRID: NORTHING: 500079.280 EASTING: 1746472.144



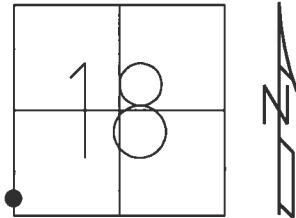
RECORD:  
 ASSUMED P.O.T.  
 STA 194+16.20  
 SET P.K./WASHER  
 10/6/98, TMR  
 FD P.K./WASHER  
 5/24/11, KPM  
 REF 11  
 5/26/11, KPM  
 9/12/11  
 7/1/15, JFO  
 COVERED  
 7/2/21, JMR



O.D.O.T. DISTRICT 2 SURVEY OFFICE USE ONLY

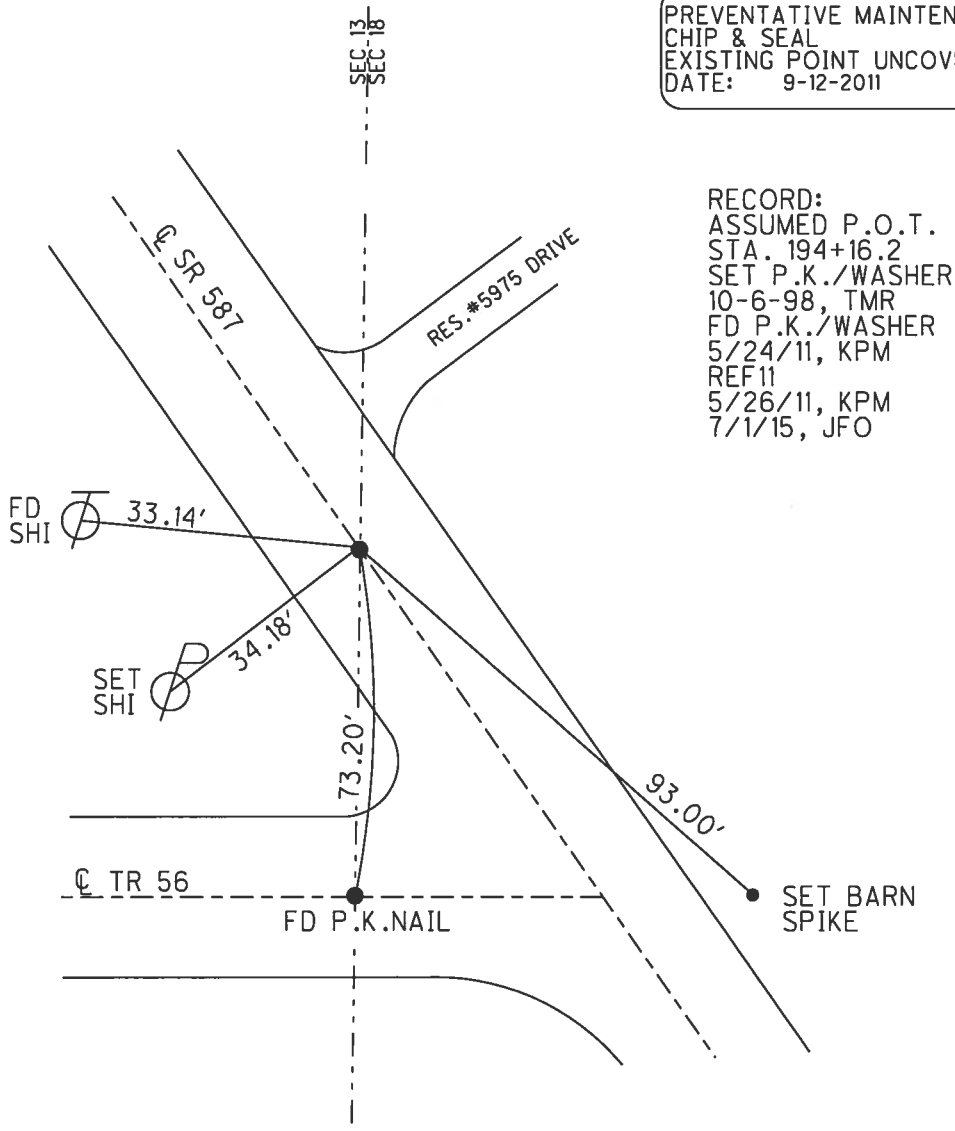
PERSONNEL \_\_\_\_\_ REFERENCE NO. 11 SHEET 13 OF 30  
 NOTES FINGER \_\_\_\_\_ DATE 5-24-11 ROUTE SR 587  
 H.C. MOSER \_\_\_\_\_ WEATHER OVERCAST COUNTY SENECA  
 R.C. HARBAUGH \_\_\_\_\_ TEMP. 65° TOWNSHIP SENECA  
 \_\_\_\_\_ SECTION 18  
 \_\_\_\_\_ T 1 N R 14 E

TYPE MONUMENT PK WASHER  
 ON SURFACE - ~~BELOW~~ ON  
~~LEFT~~ - Q PAV'T - ~~RIGHT~~ ON  
10.8' TO RT EDGE PAVEMENT  
 S.L.M. 194+15.19



GRID: NORTHING: 500079.280 EASTING: 1746472.144

PREVENTATIVE MAINTENANCE  
 CHIP & SEAL  
 EXISTING POINT UNCOVERED  
 DATE: 9-12-2011

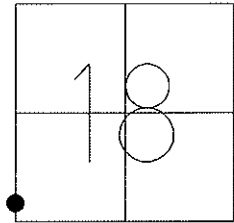


RECORD:  
 ASSUMED P.O.T.  
 STA. 194+16.2  
 SET P.K./WASHER  
 10-6-98, TMR  
 FD P.K./WASHER  
 5/24/11, KPM  
 REF11  
 5/26/11, KPM  
 7/1/15, JFO

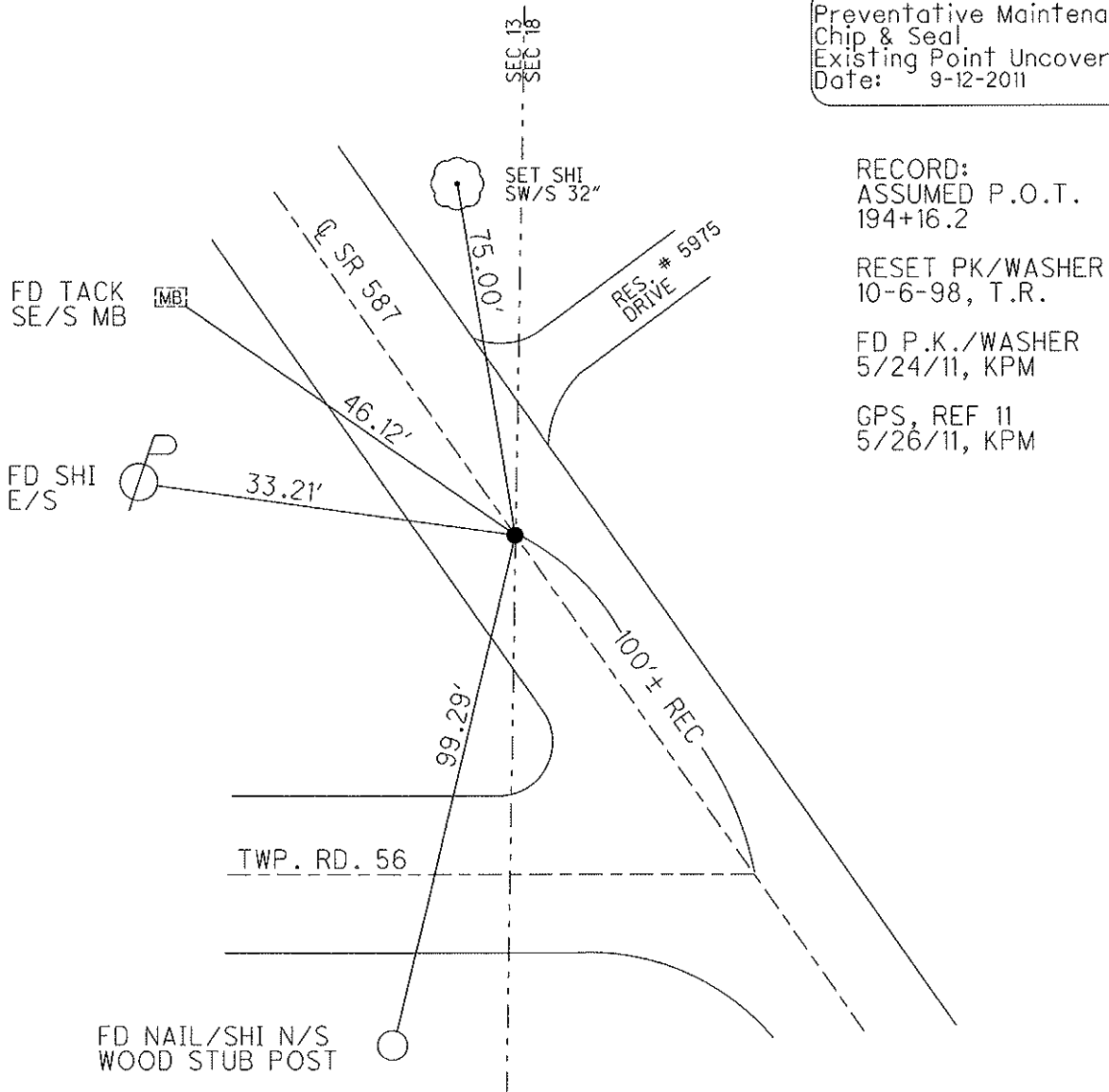
O.D.O.T. DISTRICT 2 SURVEY OFFICE

PERSONNEL \_\_\_\_\_ REFERENCE NO. 11 SHEET 13 OF 30  
 NOTES FINGER \_\_\_\_\_ DATE 5-24-11 \_\_\_\_\_ ROUTE SR 587  
 H.C. MOSE \_\_\_\_\_ WEATHER OVERCAST \_\_\_\_\_ COUNTY SENECA  
 R.C. HARBAUGH \_\_\_\_\_ TEMP. 65° \_\_\_\_\_ TOWNSHIP SENECA  
 \_\_\_\_\_ SECTION 18  
 \_\_\_\_\_ T 1 N R 14 E

TYPE MONUMENT PK WASHER  
 ON SURFACE - ~~BELOW~~ ON  
~~LEFT~~ - Q PAV'T - ~~RIGHT~~ ON  
10.8' TO RT. EDGE PAVEMENT  
 S.L.M. 194+16.2  
 Grid: Northing: 500079.321 Easting: 1746472.066



Preventative Maintenance  
 Chip & Seal  
 Existing Point Uncovered  
 Date: 9-12-2011



RECORD:  
 ASSUMED P.O.T.  
 194+16.2  
 RESET PK/WASHER  
 10-6-98, T.R.  
 FD P.K./WASHER  
 5/24/11, KPM  
 GPS, REF 11  
 5/26/11, KPM

# O.D.O.T. DISTRICT 2 SURVEY OFFICE

PERSONNEL

REFERENCE NO. 11

SHEET 12 OF 24

NOTES CANTERBURY

H.C. Rousos

R.C. LOEHRKE

DATE 5-4-98

WEATHER OVERCAST

TEMP. +63° F

ROUTE 587

COUNTY SENECA

TOWNSHIP SENECA

SECTION 18

T/N R 14 E

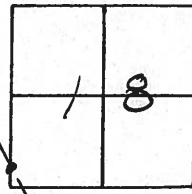
TYPE MONUMENT P.K. & WASHER ATOP RR SPK.

ON SURFACE - ~~BELOW~~ Surface

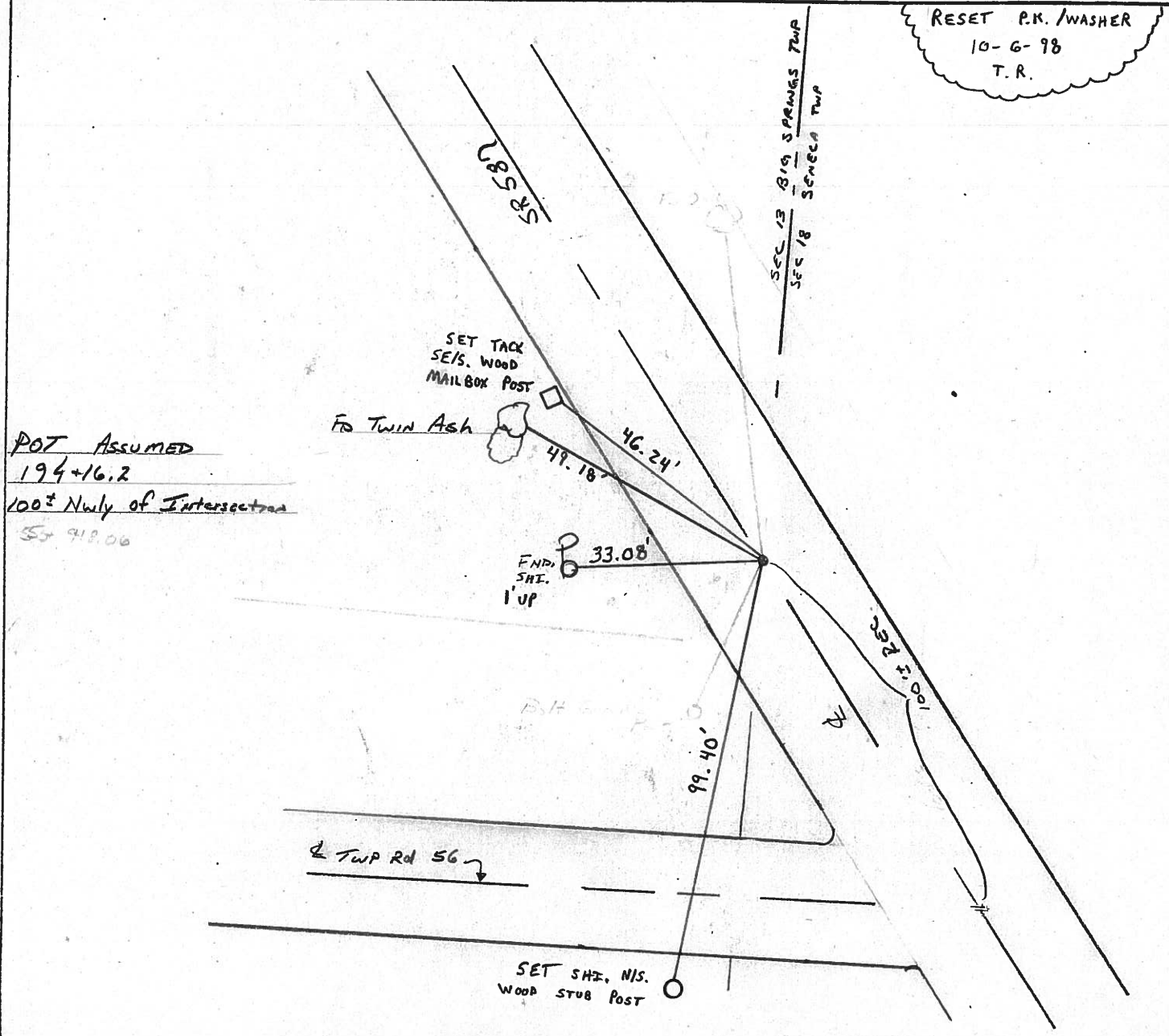
~~LEFT & PAV'T. RIGHT~~ of Pmnt

10.3' TO RT EDGE PAVEMENT

S.L.M. 3.677± / 5+907.62 SLK



RESET P.K. / WASHER  
 10-6-98  
 T.R.



# O.D.O.T. DISTRICT 2 SURVEY OFFICE

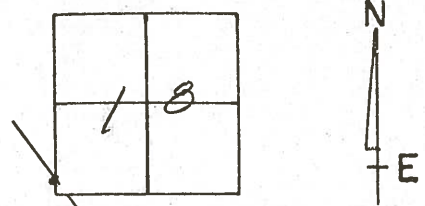
PERSONNEL

NOTES CRONIN  
 H.C. RIPPLE  
 R.C. BARBOUR  
GEYMAN

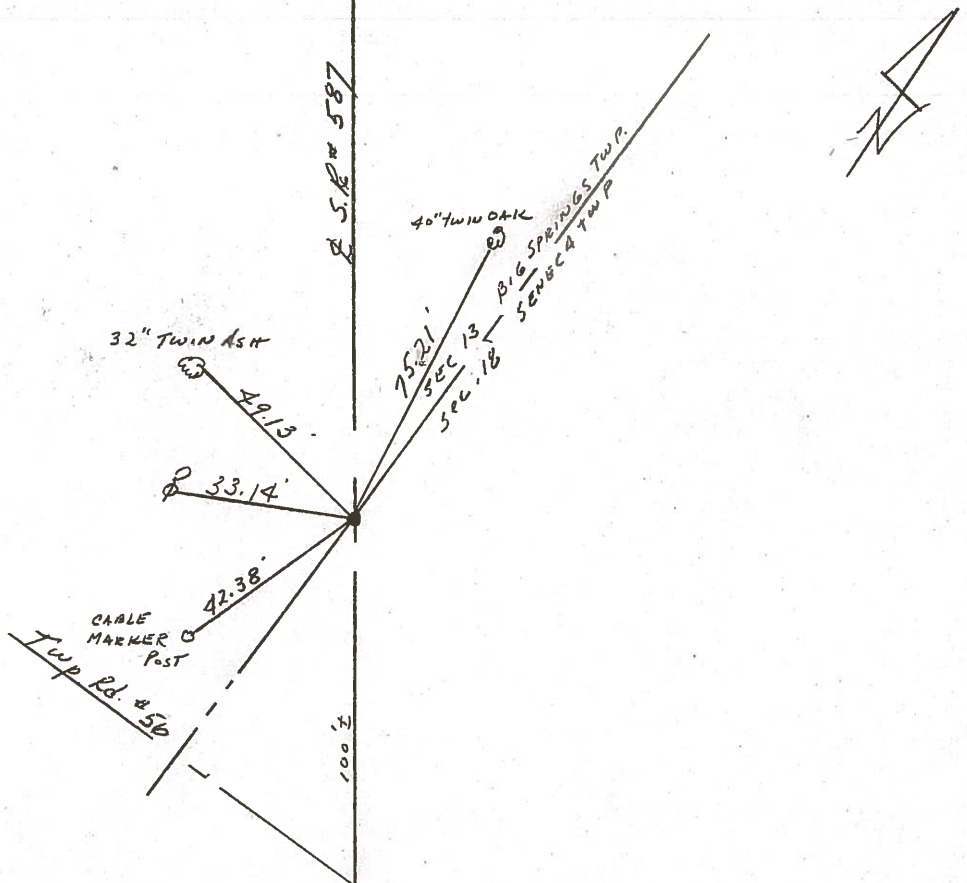
REFERENCE NO. 11  
 DRAWN 8/29/85  
 DATE 8/26/85  
 WEATHER SUNNY  
 TEMP. 66°

SHEET 12 OF \_\_\_\_\_  
 ROUTE #587  
 COUNTY SENECA  
 TOWNSHIP SENECA  
 SECTION 18  
 T. 1 N R. 14 E

TYPE MONUMENT P.K. WASHER ATOP R.R. SPIKE  
 ON SURFACE - BELOW ON SURFACE  
 LEFT - ☉ PAV'T. - RIGHT R. PAV'T.  
 TO EDGE PAVEMENT  
 S.L.M. 3677 ±



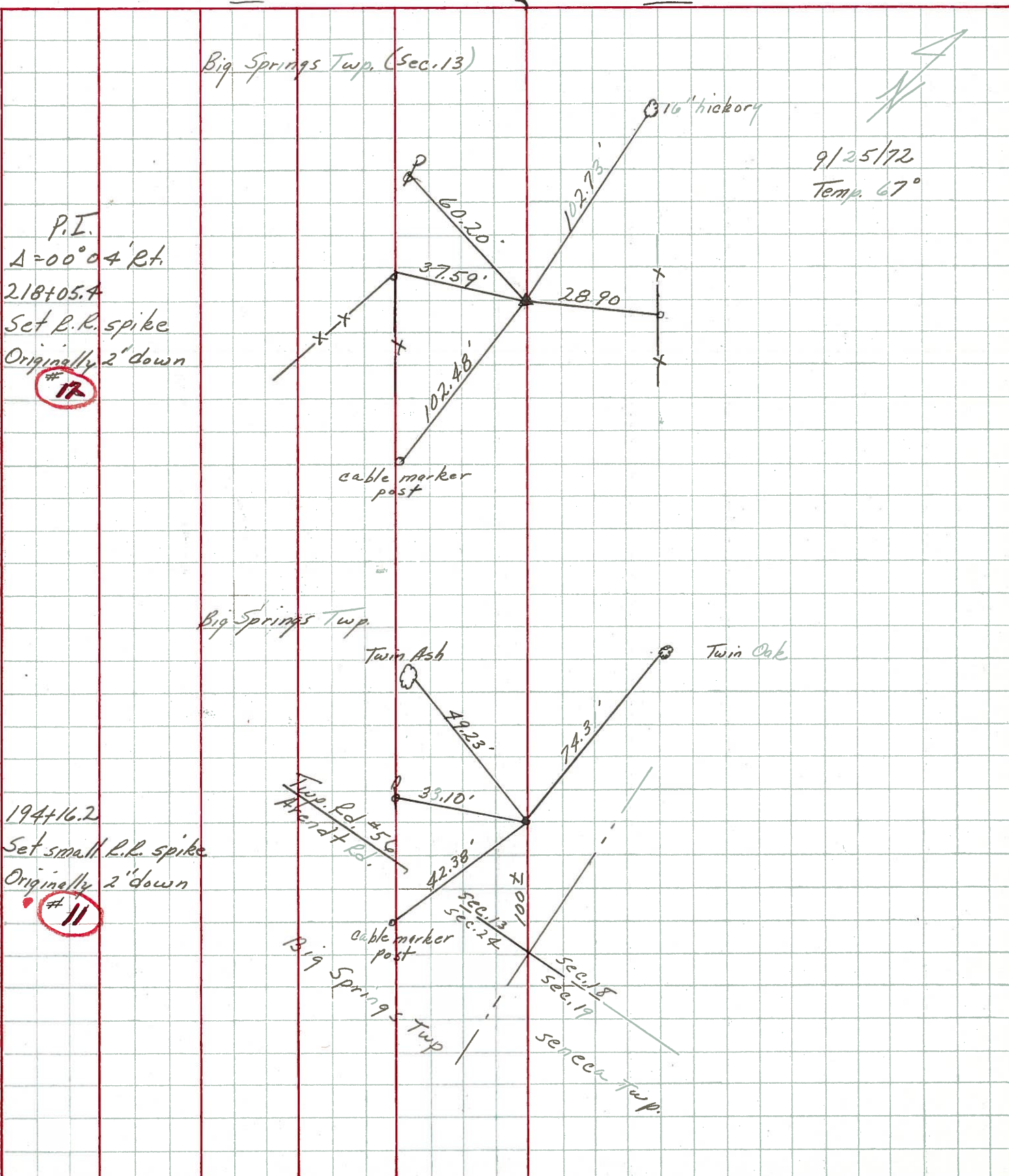
P.O.T. ASSUMED  
194+16.2  
100 ± N.W. of INTERSECTION





PERSONNEL	TITLE	PERSONNEL	TITLE	COUNTY	Seneca	DATE	9/22/72
Ash-Vac.				S. R.	# 587	WEATHER	sunny
Cronin				SEC.		TEMP.	58°
Ripple							
Anderson							

DESCRIPTION Wyandot-Seneca Co. Line - Northwest JOB NO. \_\_\_\_\_



P.I.  
 $\Delta = 00^{\circ}04' \text{ Rt.}$   
 218+05.4  
 Set R.R. spike  
 Originally 2' down  
 # 17

194+16.2  
 Set small R.R. spike  
 Originally 2" down  
 # 11

9/25/72  
 Temp. 67°

Big Springs Twp. (Sec. 13)

Big Springs Twp.

Twin Ash

Twin Oak

Twp. Rd. # 56  
 Arundel Rd.

Big Springs Twp

Seneca Twp.  
 Sec. 13  
 Sec. 18  
 Sec. 19

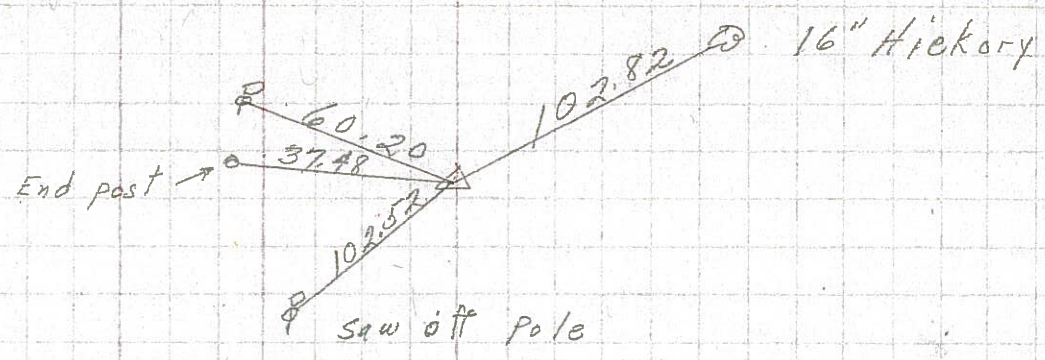


PERSONNEL	TITLE	PERSONNEL	TITLE	COUNTY	DATE
Schneider				Seneca	11-10-69
Masser				S. R. 587	WEATHER Cloudy
Barbour				SEC.	TEMP. 45°
Potts					

DESCRIPTION Wyandot Co. Line to New Riegel JOB NO. \_\_\_\_\_

12

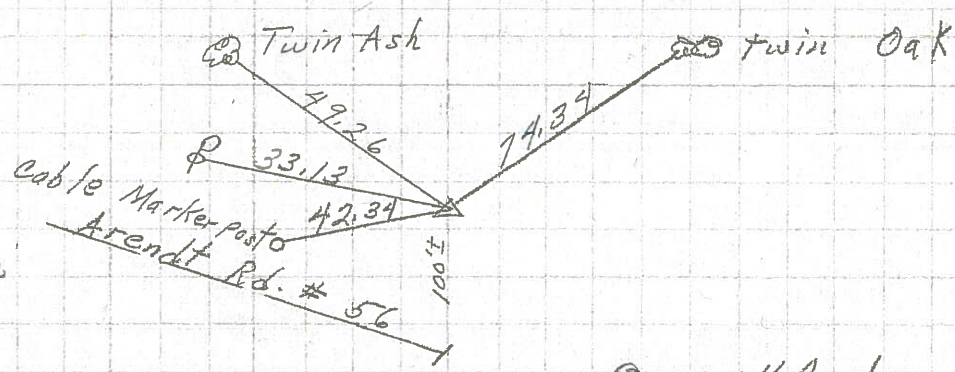
218+05.4  
R.R. spk. 2" down  
on & R/W



8722

11

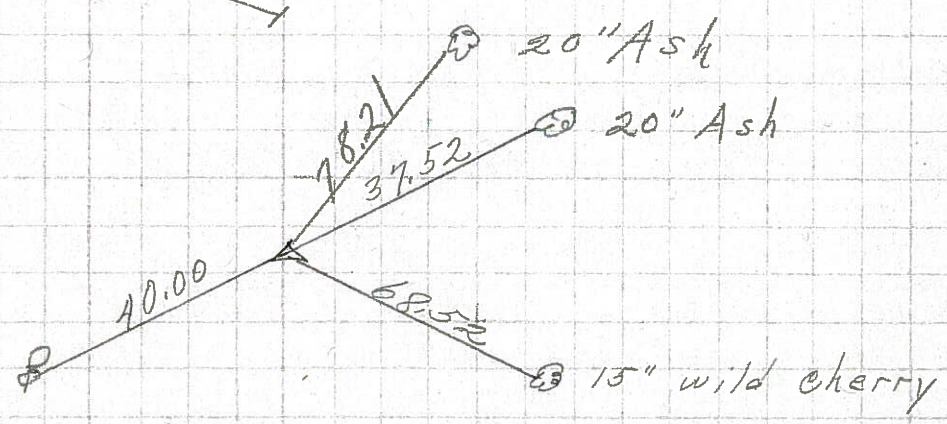
194+16.2  
R.R. spk. 2" down  
on & R/W



8721

10

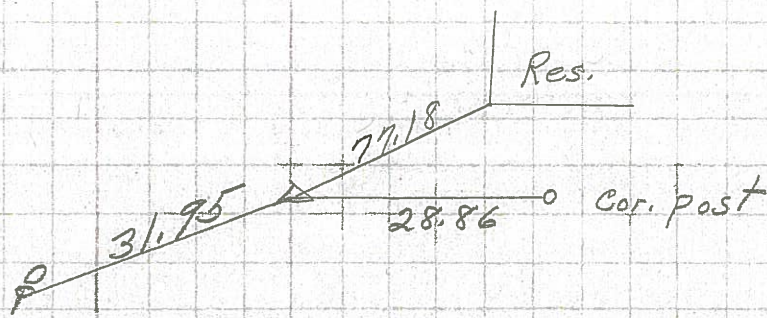
184+80.4  
R.R. spk. 2" down  
on & R/W  
set P.K. on top



8720

9

176+57.5  
R.R. spk. 6 1/2" down  
on & R/W  
Δ = 0° 0'



8719