

O.D.O.T. DISTRICT 2 SURVEY OFFICE (USE ONLY)

PERSONNEL

REFERENCE NO. 12

SHEET 14 OF 30

NOTES FINGER

DATE 5/24/11

ROUTE SR 587

H.C. MOSE

WEATHER OVERCAST

COUNTY SENECA

R.C. HARBAUGH

TEMP. 65°

TOWNSHIP BIG SPRNGS

DWG BY NIESE

PID PAVE TRAIN

SECTION 13

T 1 N R 13 E

TYPE MONUMENT R.R. SPIKE

~~ON SURFACE~~ - BELOW 3"

OFFSET 0.4' ~~LT~~ : RT

10.5' TO RT EDGE PAVEMENT

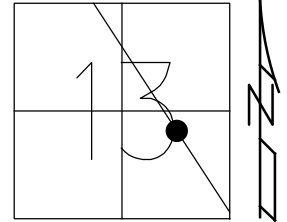
STATION: 218+03.11

HORZ.DATUM: NAD83

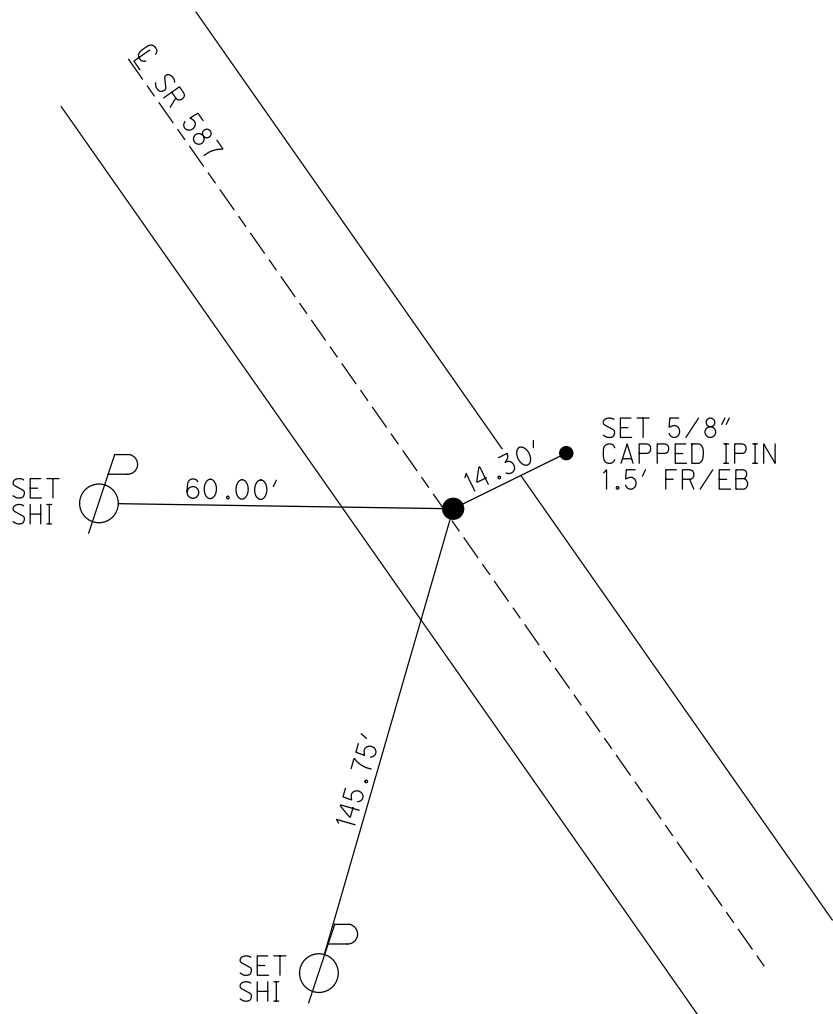
GEOID: 2009

GRID: NORTHING: 502071.085

EASTING: 1745154.993



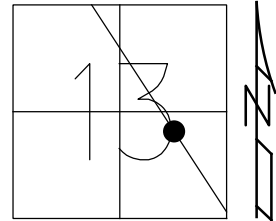
RECORD: P.I.
 $\Delta = 00^{\circ}04' RT$
 STA 218+05.40
 SET P.K./WASHER
 10/6/98, TMR
 FD R.R.SPIKE
 W/ DIMPLE
 5/24/11, KPM
 REF12
 5/26/11, KPM
 9/12/11
 7/1/15, JFO
 FD R.R. SPIKE
 3 1/2" DOWN
 7/2/21, JMR



O.D.O.T. DISTRICT 2 SURVEY OFFICE (USE ONLY)

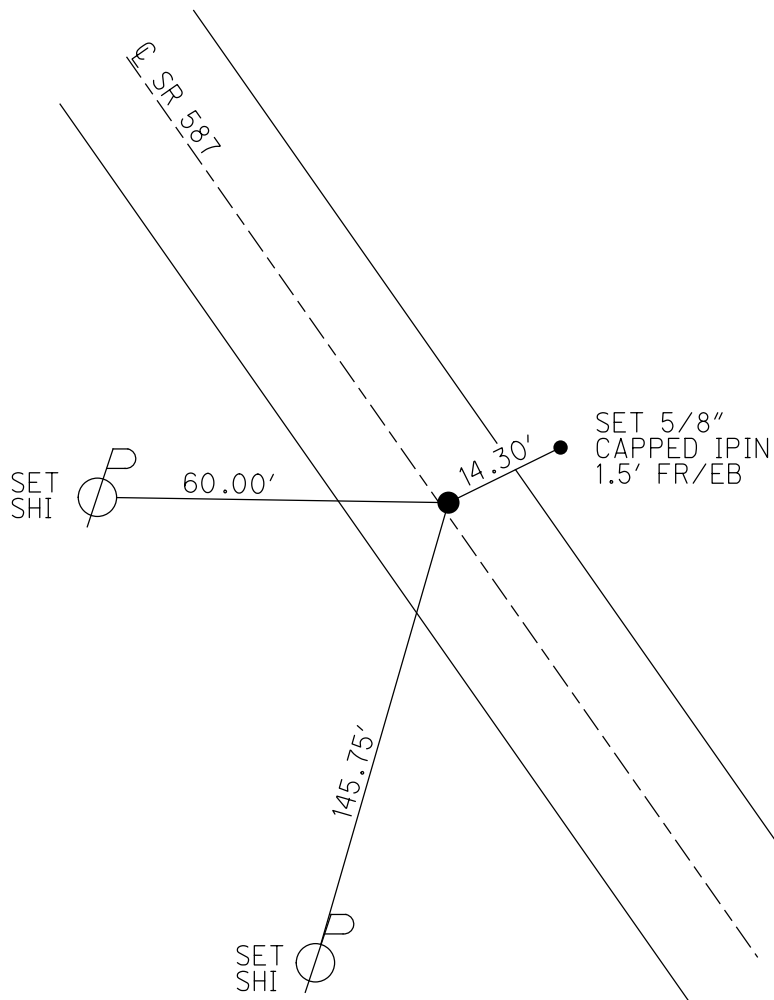
PERSONNEL _____ REFERENCE NO. 12 SHEET 14 OF 30
 NOTES FINGER DATE 5/24/11 ROUTE SR 587
 H.C. MOSER WEATHER OVERCAST COUNTY SENECA
 R.C. HARBAUGH TEMP. 65° TOWNSHIP BIG SPRNGS
 DWG BY NIESE PID PAVE TRAIN SECTION 13
 T 1 N R 13 E

TYPE MONUMENT R.R. SPIKE
~~ON SURFACE~~ - BELOW 3"
 OFFSET 0.4' ~~LT~~ : RT
10.5' TO RT EDGE PAVEMENT
 STATION: 218+03.11



HORIZ.DATUM: _____ GEOID: _____
 GRID: NORTHING: 502071.085 EASTING: 1745154.993

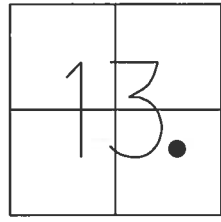
RECORD: P.I.
 $\Delta = 00^{\circ}04' RT$
 STA 218+05.40
 SET P.K./WASHER
 10/6/98, TMR
 FD R.R.SPIKE
 W/ DIMPLE
 5/24/11, KPM
 REF 12
 5/26/11, KPM
 9/12/11
 7/1/15, JFO
 FD R.R. SPIKE
 3 1/2" DOWN
 7/2/21, JMR



O.D.O.T. DISTRICT 2 SURVEY OFFICE USE ONLY

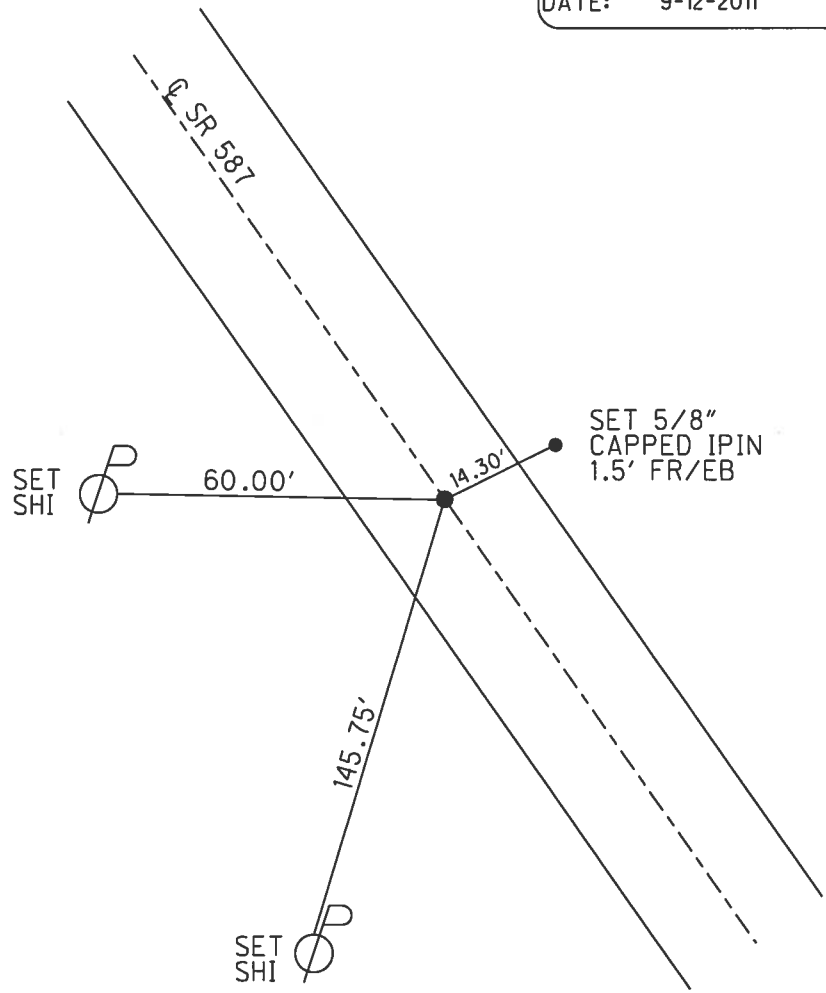
PERSONNEL	REFERENCE NO.	12	SHEET	14	OF	30
NOTES	FINGER	DATE	5-24-11	ROUTE	SR 587	
H.C.	MOSER	WEATHER	OVERCAST	COUNTY	SENECA	
R.C.	HARBAUGH	TEMP.	65°	TOWNSHIP	BIG SPRINGS	
				SECTION	13	
				T	1	N
				R	13	E

TYPE MONUMENT R.R.SPIKE
~~ON SURFACE~~ - BELOW 3"
~~LEFT - C~~ PAV'T - RIGHT 0.4'
10.5' TO RT EDGE PAVEMENT
 S.L.M. 218+03.11
 GRID: NORTHING: 502071.085 EASTING: 1745154.993



RECORD P.I.
 $\Delta = 0^{\circ}04' RT$
 STA. 218+05.4
 SET P.K./WASHER
 10-6-98, TMR
 FD R.R.SPIKE
 W/DIMPLE
 5-24-11, KPM
 REF 12
 5/26/11, KPM
 7/1/15, JFO

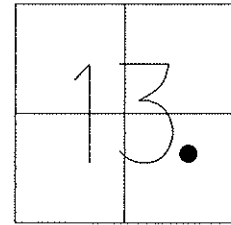
PREVENTATIVE MAINTENANCE
 CHIP & SEAL
 EXISTING POINT UNCOVERED
 DATE: 9-12-2011



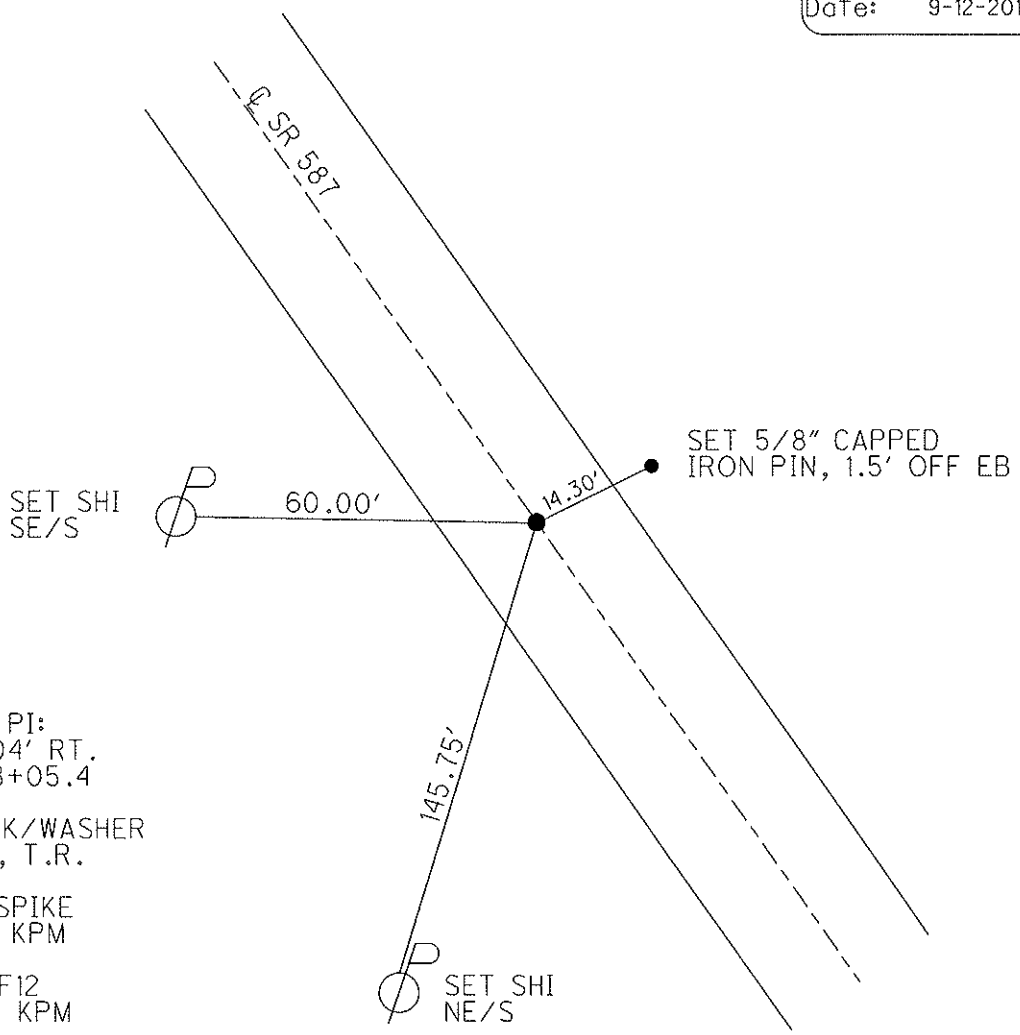
O.D.O.T. DISTRICT 2 SURVEY OFFICE

PERSONNEL _____ REFERENCE NO. 12 SHEET 14 OF 30
 NOTES FINGER DATE 5-24-11 ROUTE SR 587
 H.C. MOSE WEATHER OVERCAST COUNTY SENECA
 R.C. HARBAUGH TEMP. 65° TOWNSHIP BIG SPRINGS
 _____ SECTION 13
 _____ T 1 N R 13 E

TYPE MONUMENT RR SPIKE
~~ON SURFACE~~ - BELOW 3"
~~LEFT = C PAV'T~~ - RIGHT 0.4'
10.5' TO RT. EDGE PAVEMENT
 S.L.M. 218+05.4
 Grid: Northing: 502071.063 Easting: 1745154.920



Preventative Maintenance
 Chip & Seal
 Existing Point Uncovered
 Date: 9-12-2011



RECORD PI:
 $\Delta = 0^\circ 04' \text{ RT.}$
 REC. 218+05.4
 RESET PK/WASHER
 10-6-98, T.R.
 FD R.R.SPIKE
 5-24-11, KPM
 GPS, REF12
 5/26/11, KPM

O.D.O.T. DISTRICT 2 SURVEY OFFICE

PERSONNEL

REFERENCE NO. 12

SHEET 13 OF 24

NOTES CANTERBURY

H.C. Rousos

R.C. LOHRKE

DATE 5/4/98

WEATHER OVERCAST

TEMP. +63° F

ROUTE 587

COUNTY SENECA

TOWNSHIP BIG SPRINGS

SECTION 13

T. L. N. R. 13 E

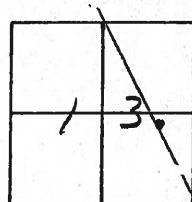
TYPE MONUMENT PK + WASHER AT TOP RR SPK.

ON SURFACE - ~~BELOW~~ ON SURFACE

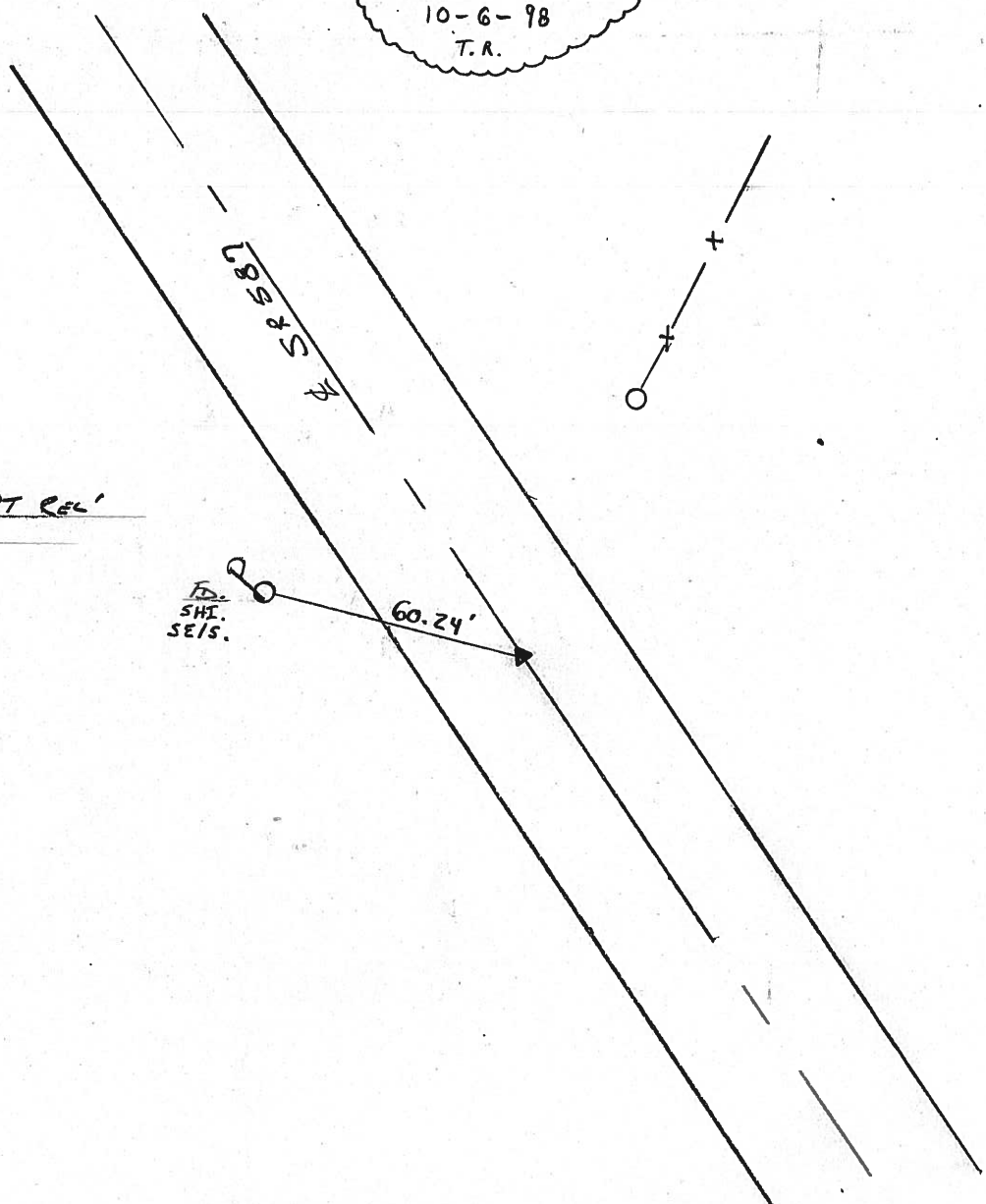
~~LEFT-~~ PAV'T. - RIGHT 0.3' RT. E

10.5' TO RT. EDGE PAVEMENT

S.L.M. 4, 13 ± / G+633 SLK



RESET P.K. / WASHER
 10-6-98
 T.R.



P.Z. A = 00° 04' 00" RT REC'
218 ± 05, 40

FD
SHT.
SE/S.

O.D.O.T. DISTRICT 2 SURVEY OFFICE

PERSONNEL

REFERENCE NO. 12

SHEET 13 OF

NOTES CROWN

DRAWN 8/29/85

H.C. RIPPLE

DATE 8/26/85

ROUTE #587

R.C. BARBOUR

WEATHER SUNNY

COUNTY SENECA

GEYMAN

TEMP. 66°

TOWNSHIP BIG SPRINGS

SECTION 13

T 1 N R 13 E

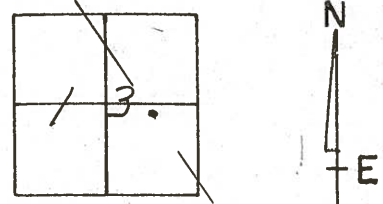
TYPE MONUMENT P.K. EWASHER Atop R.R. SPK.

ON SURFACE - BELOW ON SURFACE

LEFT - ☉ PAV'T. - RIGHT ☉ PAV'T.

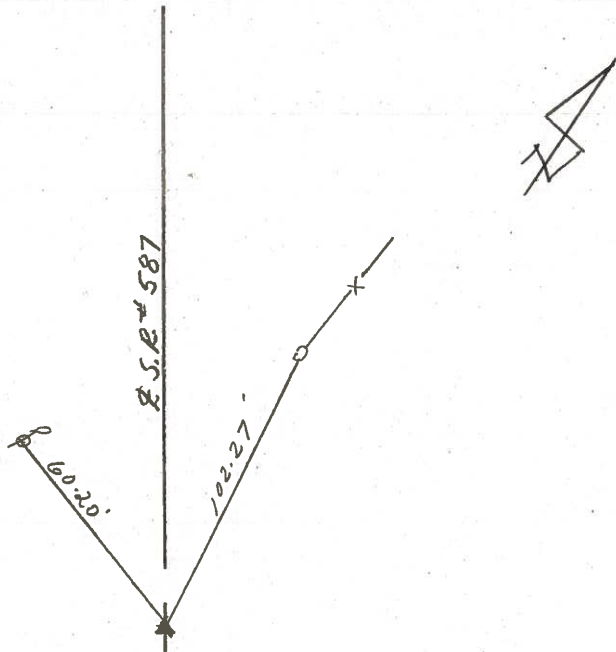
TO EDGE PAVEMENT

S.L.M. 4.13 ±



P.I. $\Delta = 00^{\circ}04'00''$ Lt. Rec.

218+05.40



PERSONNEL	TITLE	PERSONNEL	TITLE
Ash-Vac.			
Cronin			
Ripple			
Anderson			

COUNTY Seneca

DATE 9/22/72

S. R. # 587

WEATHER sunny

SEC.

TEMP. 58°

DESCRIPTION Wyandot-Seneca Co. Line - Northwest

JOB NO.

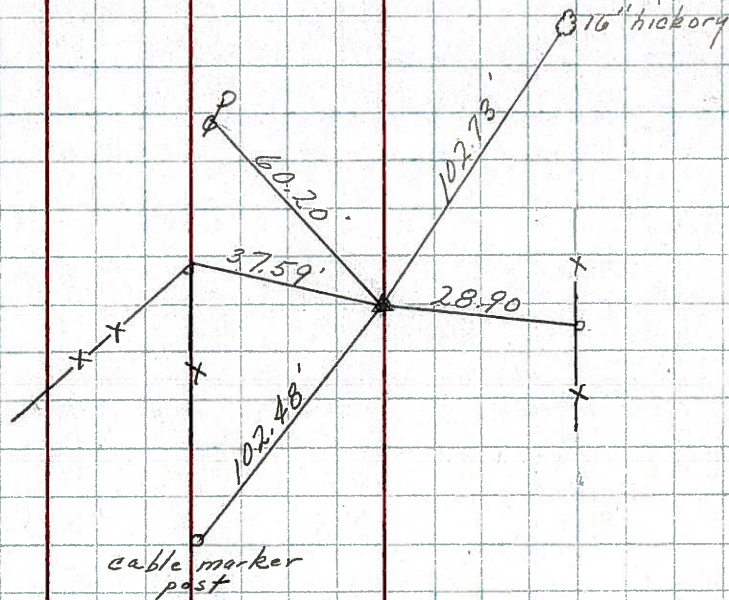
LEFT

CENTER LINE

RIGHT

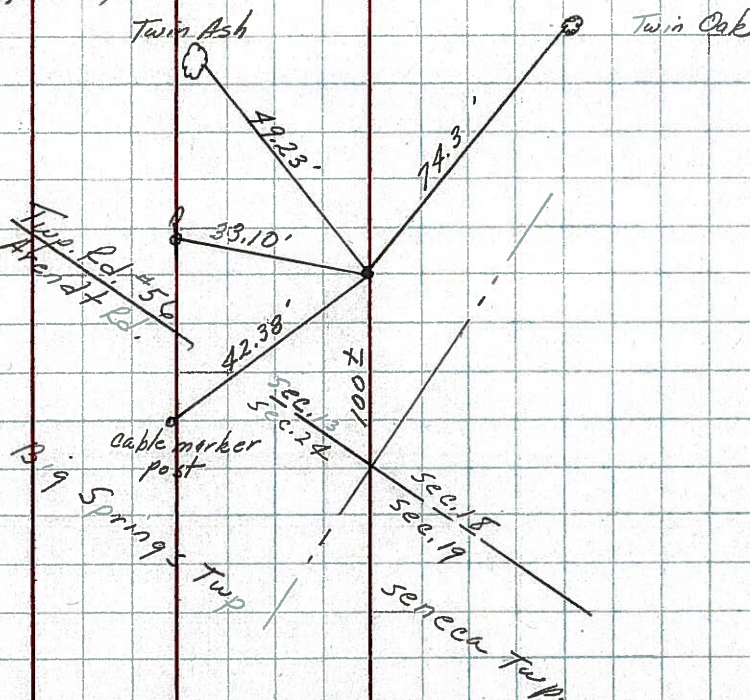
Big Springs Twp. (Sec. 13)

P.I.
 Δ = 00° 04' Rt.
 218 + 05.4
 Set R.R. spike
 Originally 2" down
 # 17



Big Springs Twp.

194 + 16.2
 Set small R.R. spike
 Originally 2" down
 # 11



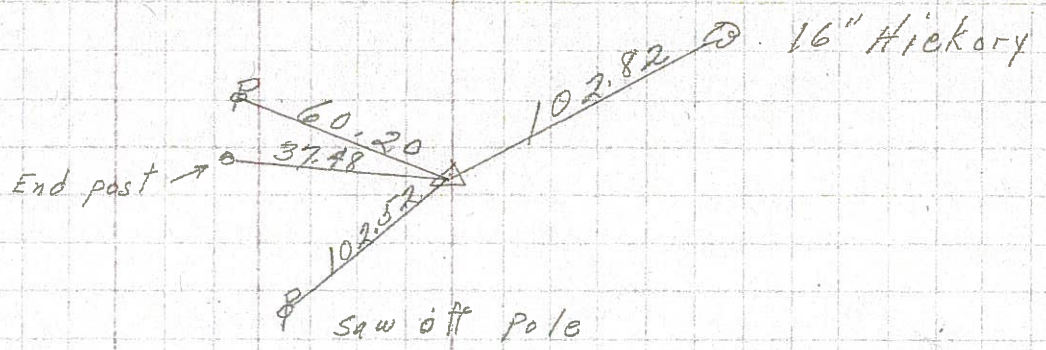
PERSONNEL	TITLE	PERSONNEL	TITLE	COUNTY	DATE
Schneider				Seneca	11-10-69
Mosser				S. R. 587	WEATHER Cloudy
Barbour				SEC.	TEMP 45°
Potts					

DESCRIPTION Wyandot Co. Line to New Riegel JOB NO. _____

12

218+05.4
R.R. spk. 2" down
on & R/W

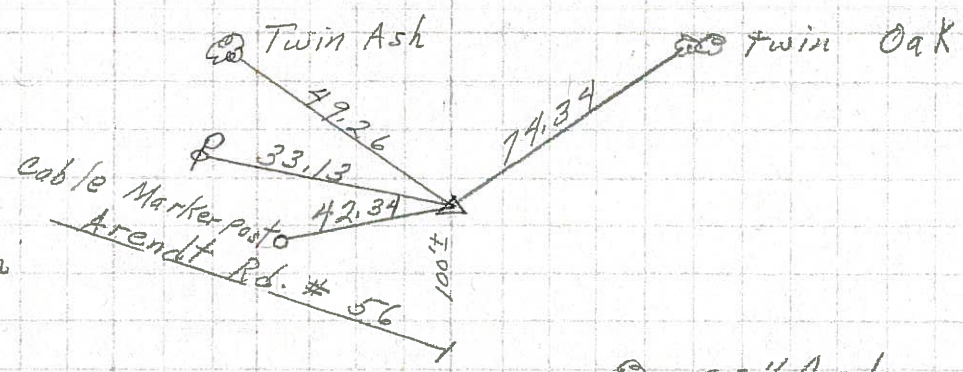
8722



11

194+16.2
R.R. spk. 2" down
on & R/W

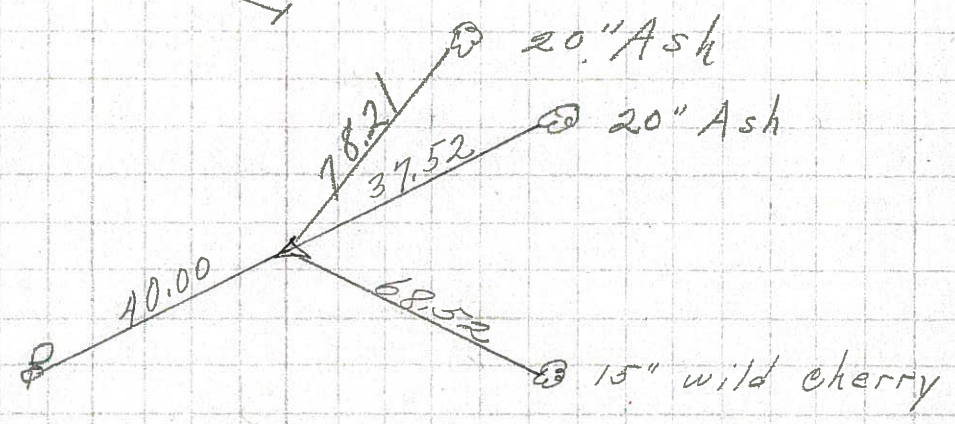
8721



10

184+80.4
R.R. spk. 2" down
on & R/W
set P.K. on top

8720



9

176+57.5
R.R. spk. 6 1/2" down
on & R/W
Δ = 0° 0'

8719

