

O.D.O.T. DISTRICT 2 SURVEY OFFICE (USE ONLY)

PERSONNEL

REFERENCE NO. 13

SHEET 15 OF 30

NOTES MILLER DATE 12/28/23
 H.C. RHOADES WEATHER RAIN
 R.C. MILLER TEMP. 46°

ROUTE SR 587
 COUNTY SENECA
 TOWNSHIP BIG SPRINGS
 SECTION 13

DWG BY RHOADES PID PAVING TRAINING

T 1 N R 13 E

TYPE MONUMENT MAG SHANK

ON SURFACE - ~~BELOW~~ ON

OFFSET ☉ PAVEMENT ON LT : RT

10.9' TO RT EDGE PAVEMENT

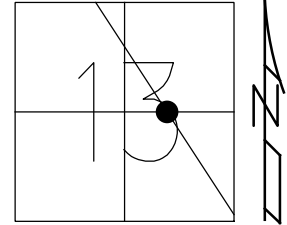
STATION: 225+04.29

HORIZ.DATUM: NAD83 2011

GEOID: NAVD88 2018

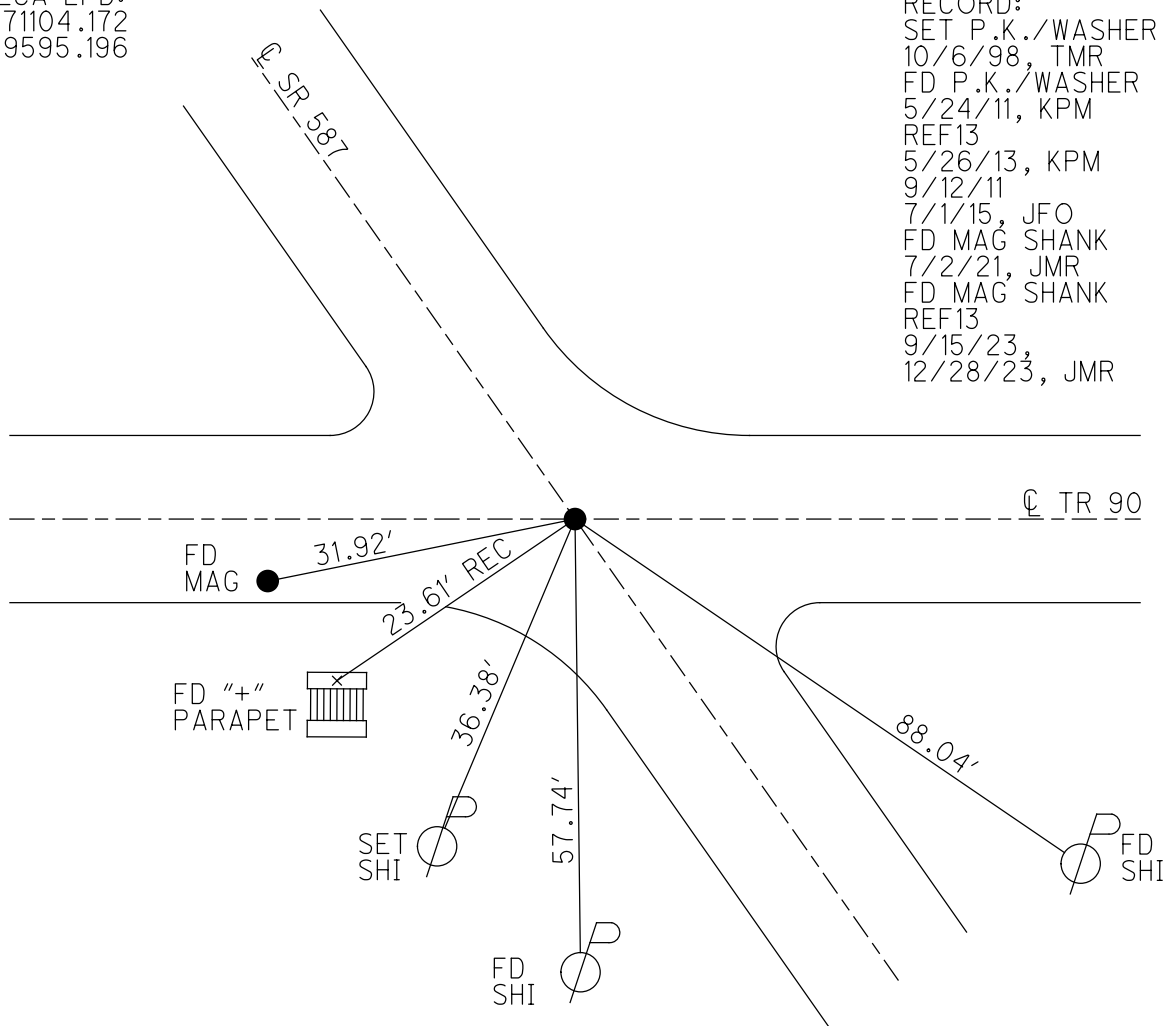
GRID: NORTHING: 502655.951

EASTING: 1744768.210



SENECA LPD:
 N: 271104.172
 E: 119595.196

RECORD:
 SET P.K./WASHER
 10/6/98, TMR
 FD P.K./WASHER
 5/24/11, KPM
 REF13
 5/26/13, KPM
 9/12/11
 7/1/15, JFO
 FD MAG SHANK
 7/2/21, JMR
 FD MAG SHANK
 REF13
 9/15/23,
 12/28/23, JMR



O.D.O.T. DISTRICT 2 SURVEY OFFICE (USE ONLY)

PERSONNEL

REFERENCE NO. 13

SHEET 15 OF 30

NOTES FINGER

DATE 5/24/11

ROUTE SR 587

H.C. MOSE

WEATHER OVERCAST

COUNTY SENECA

R.C. HARBAUGH

TEMP. 65°

TOWNSHIP BIG SPRINGS

SECTION 13

DWG BY NIESE PID PAVE TRAIN

T 1 N R 13 E

TYPE MONUMENT P.K./WASHER

ON SURFACE - ~~BELOW~~ ON

OFFSET Q PAVEMENT ON LT : RT

10.9' TO RT EDGE PAVEMENT

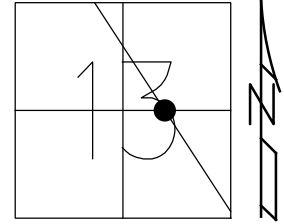
STATION: 225+04.29

HORZ.DATUM: NAD83

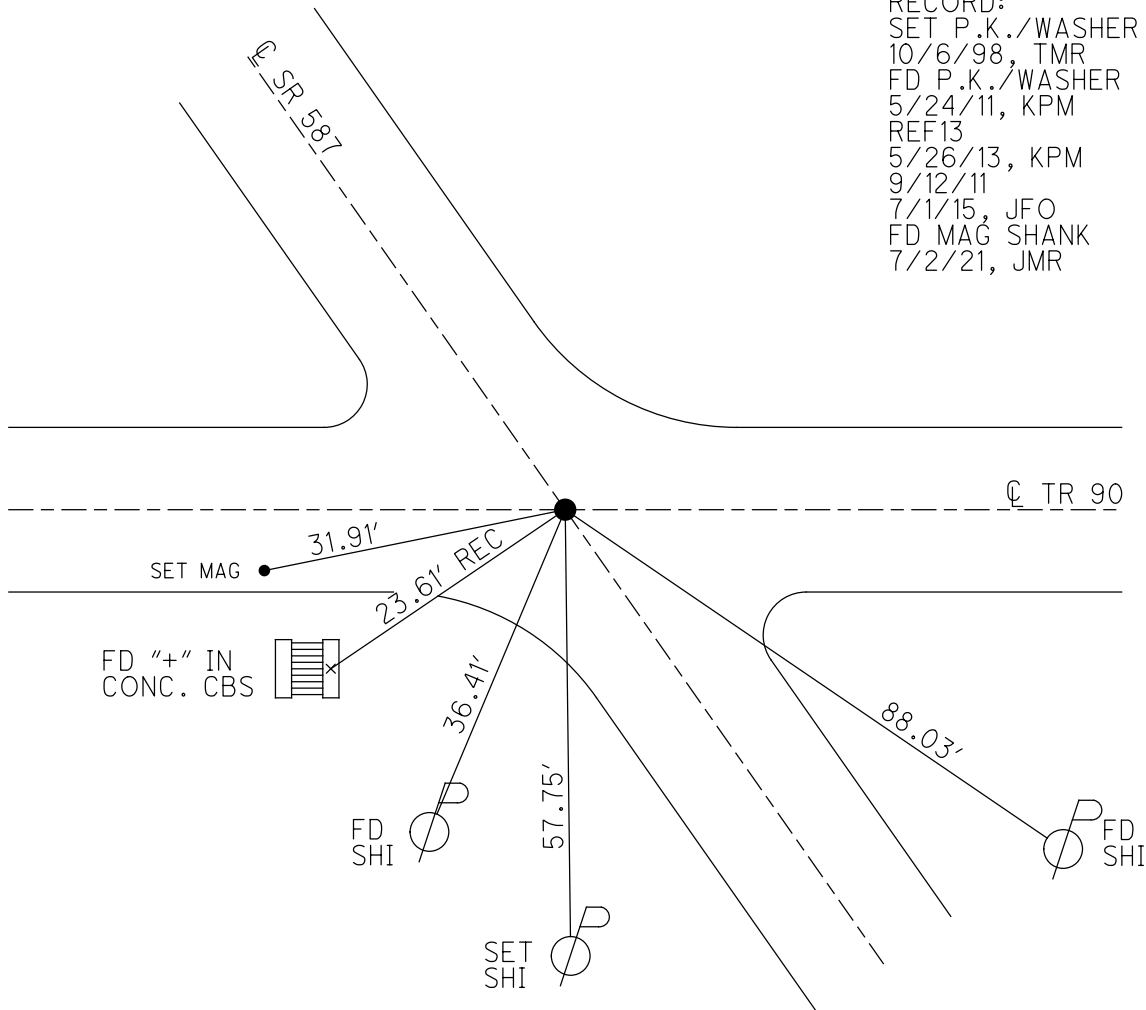
GEOID: 2009

GRID: NORTHING: 502655.955

EASTING: 1744768.228



RECORD:
 SET P.K./WASHER
 10/6/98, TMR
 FD P.K./WASHER
 5/24/11, KPM
 REF13
 5/26/13, KPM
 9/12/11
 7/1/15, JFO
 FD MAG SHANK
 7/2/21, JMR



O.D.O.T. DISTRICT 2 SURVEY OFFICE (USE ONLY)

PERSONNEL

REFERENCE NO. 13

SHEET 15 OF 30

NOTES FINGER

DATE 5/24/11

ROUTE SR 587

H.C. MOSE

WEATHER OVERCAST

COUNTY SENECA

R.C. HARBAUGH

TEMP. 65°

TOWNSHIP BIG SPRINGS

DWG BY NIESE

PID PAVE TRAIN

SECTION 13

T 1 N R 13 E

TYPE MONUMENT P.K./WASHER

ON SURFACE - ~~BELOW~~ ON

OFFSET \varnothing PAVEMENT ON LT : RT

10.9' TO RT EDGE PAVEMENT

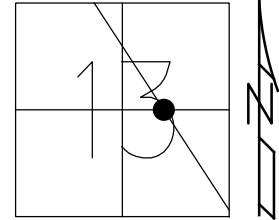
STATION: 225+04.29

HORZ.DATUM: _____

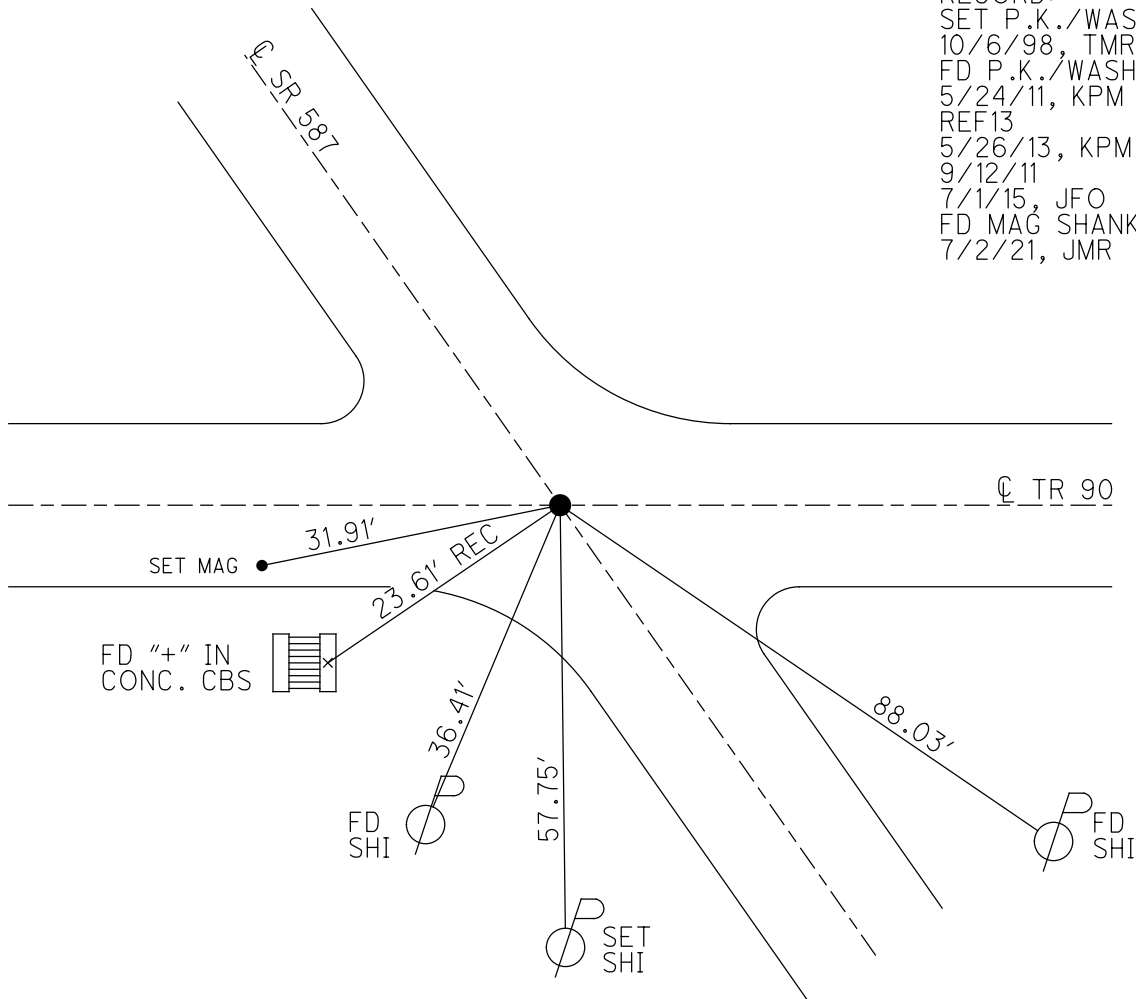
GEOID: _____

GRID: NORTHING: 502655.955

EASTING: 1744768.228



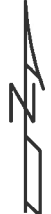
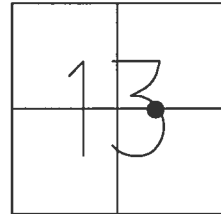
RECORD:
 SET P.K./WASHER
 10/6/98, TMR
 FD P.K./WASHER
 5/24/11, KPM
 REF13
 5/26/13, KPM
 9/12/11
 7/1/15, JFO
 FD MAG SHANK
 7/2/21, JMR



O.D.O.T. DISTRICT 2 SURVEY OFFICE USE ONLY

PERSONNEL _____ REFERENCE NO. 13 SHEET 15 OF 30
 NOTES FINGER _____ DATE 5-24-11 ROUTE SR 587
 H.C. MOSER _____ WEATHER OVERCAST COUNTY SENECA
 R.C. HARBAUGH _____ TEMP. 65° TOWNSHIP BIG SPRINGS
 _____ SECTION 13
 T 1 N R 13 E

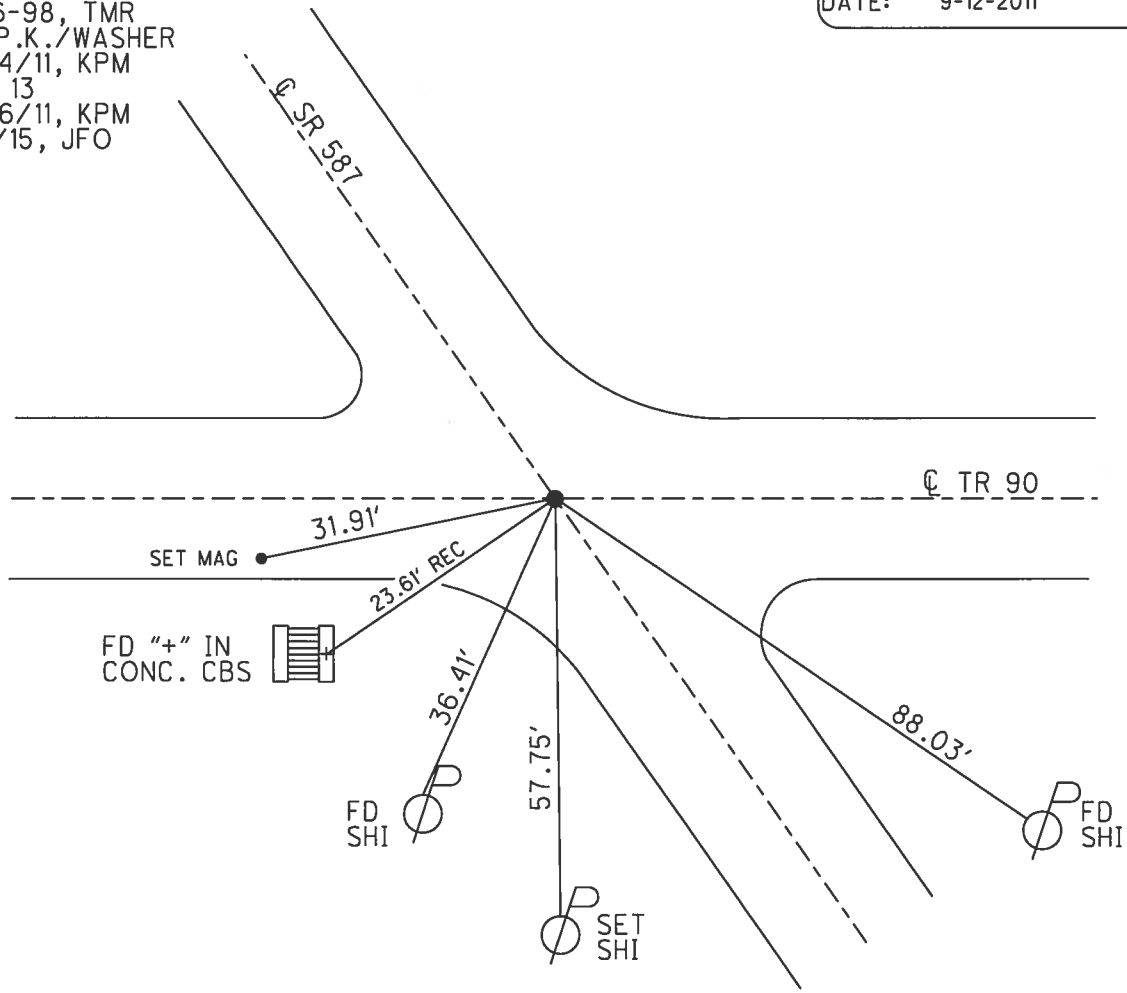
TYPE MONUMENT PK WASHER
 ON SURFACE - ~~BELOW~~ ON _____
~~LEFT~~ - ℄ PAV'T - ~~RIGHT~~ ON _____
10.9' TO RT EDGE PAVEMENT
 S.L.M. 225+04.29



GRID: NORTHING: 502655.955 EASTING: 1744768.228

RECORD:
 SET P.K./WASHER
 10-6-98, TMR
 FD P.K./WASHER
 5/24/11, KPM
 REF 13
 5/26/11, KPM
 7/1/15, JFO

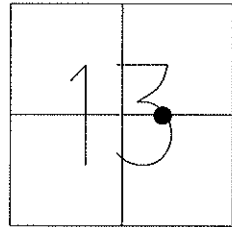
PREVENTATIVE MAINTENANCE
 CHIP & SEAL
 EXISTING POINT UNCOVERED
 DATE: 9-12-2011



O.D.O.T. DISTRICT 2 SURVEY OFFICE

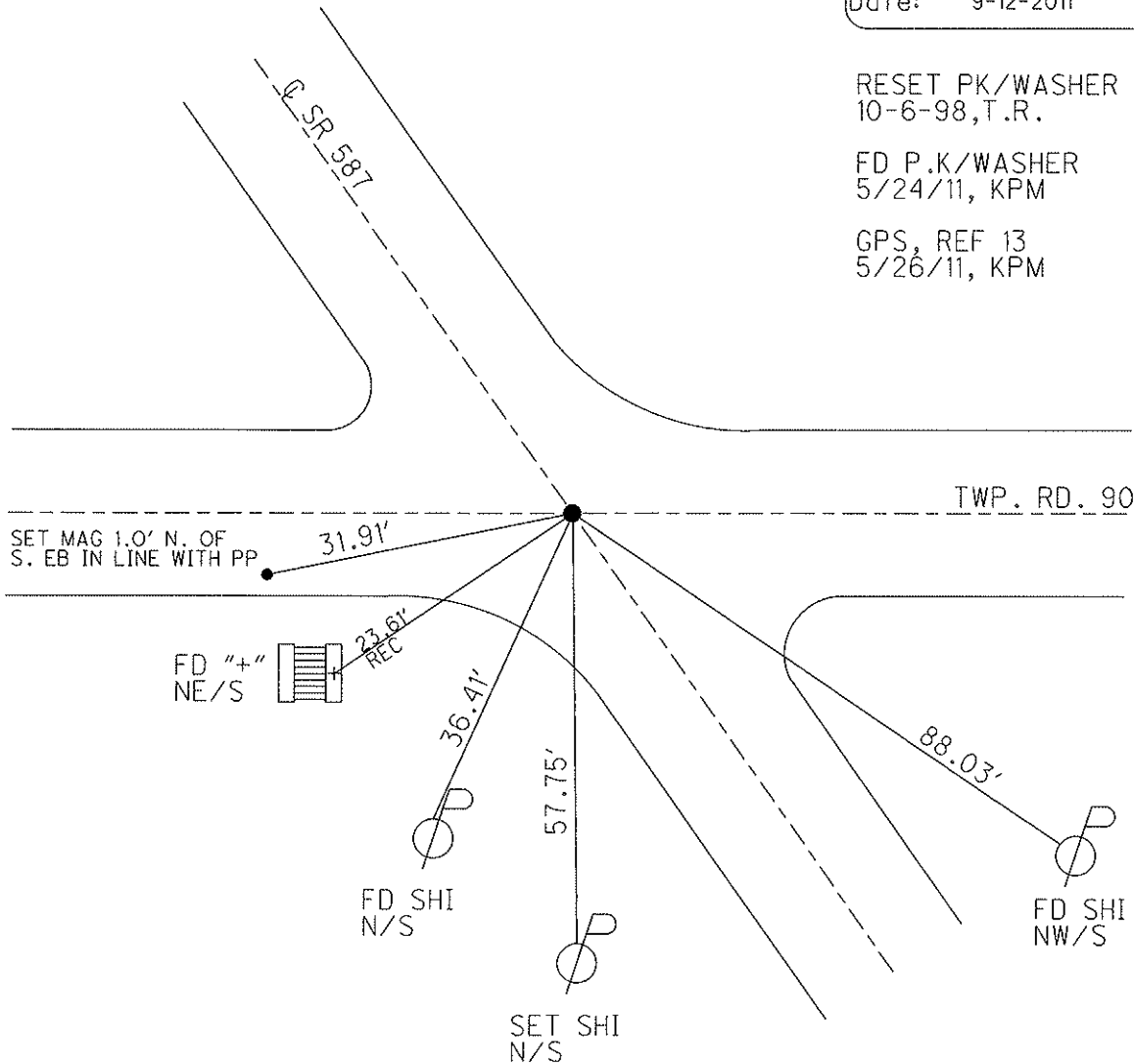
PERSONNEL	REFERENCE NO. <u>13</u>	SHEET <u>15</u> OF <u>30</u>
NOTES FINGER _____	DATE <u>5-24-11</u>	ROUTE <u>SR 587</u>
H.C. <u>MOSER</u>	WEATHER <u>OVERCAST</u>	COUNTY <u>SENECA</u>
R.C. <u>HARBAUGH</u>	TEMP. <u>65°</u>	TOWNSHIP <u>BIG SPRINGS</u>
_____	_____	SECTION <u>13</u>
_____	_____	T <u>1</u> N R <u>13</u> E

TYPE MONUMENT PK WASHER
 ON SURFACE - ~~BELOW~~ ON _____
 LEFT - Q PAV'T - ~~RIGHT~~ ON _____
10.9' TO RT. EDGE PAVEMENT
 S.L.M. 224+64, (220+19.26 comp)
 Grid: Northing: 502656.019 Easting: 1744768.145



Preventative Maintenance
 Chip & Seal
 Existing Point Uncovered
 Date: 9-12-2011

RESET PK/WASHER
 10-6-98, T.R.
 FD P.K/WASHER
 5/24/11, KPM
 GPS, REF 13
 5/26/11, KPM



O.D.O.T. DISTRICT 2 SURVEY OFFICE

PERSONNEL

REFERENCE NO. 13

SHEET 14 OF 24

NOTES CANTERBURY

H.C. Rousos

R.C. LOEHRKE

DATE 5/5/98

WEATHER SUN

TEMP. +65° F

ROUTE #587

COUNTY SENECA

TOWNSHIP BIG SPRINGS

SECTION 13

T. 1 N. R. 13 E

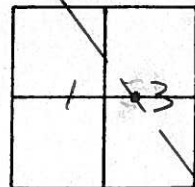
TYPE MONUMENT RR SPIKE

ON SURFACE - BELOW 2" Below Surface

~~LEFT & PAV'T.~~ ~~RIGHT~~ & BOTH

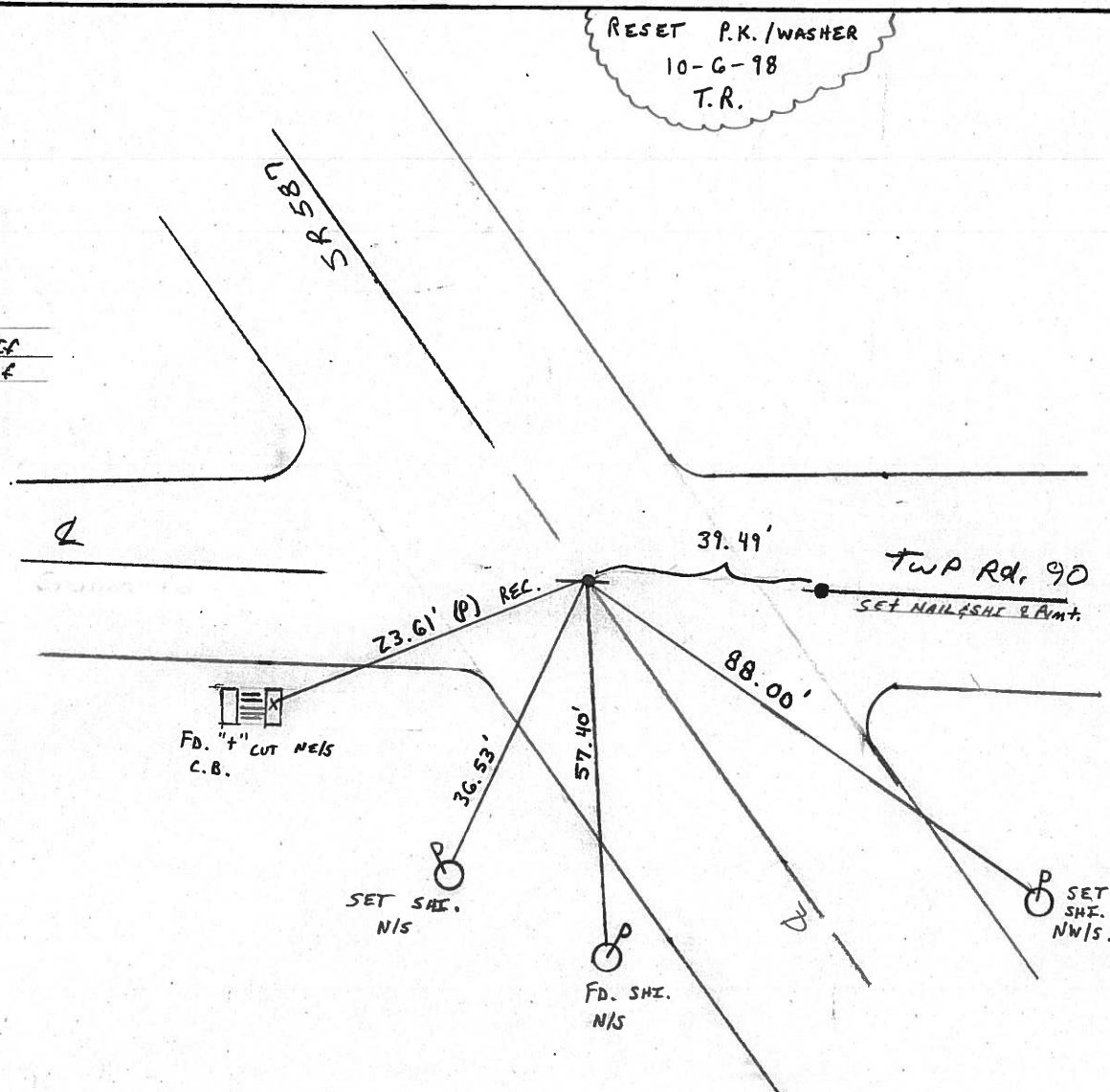
11.2' TO LT EDGE PAVEMENT

S.L.M. SLK = 6+847.26



RESET P.K./WASHER
10-6-98
T.R.

Point was not
checked to see if
it was on E of
SR 587



O.D.O.T. DISTRICT 2 SURVEY OFFICE

PERSONNEL

REFERENCE NO. 13

SHEET 14 OF

NOTES CRONIN

DRAWN 8/29/85

H.C. RIPPLE

DATE 8/26/85

R.C. BARBOUR

WEATHER SUNNY

GEYMAN

TEMP. 70°

ROUTE # 587

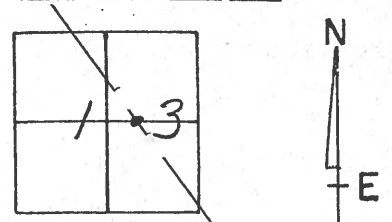
COUNTY SENECA

TOWNSHIP BIG SPRINGS

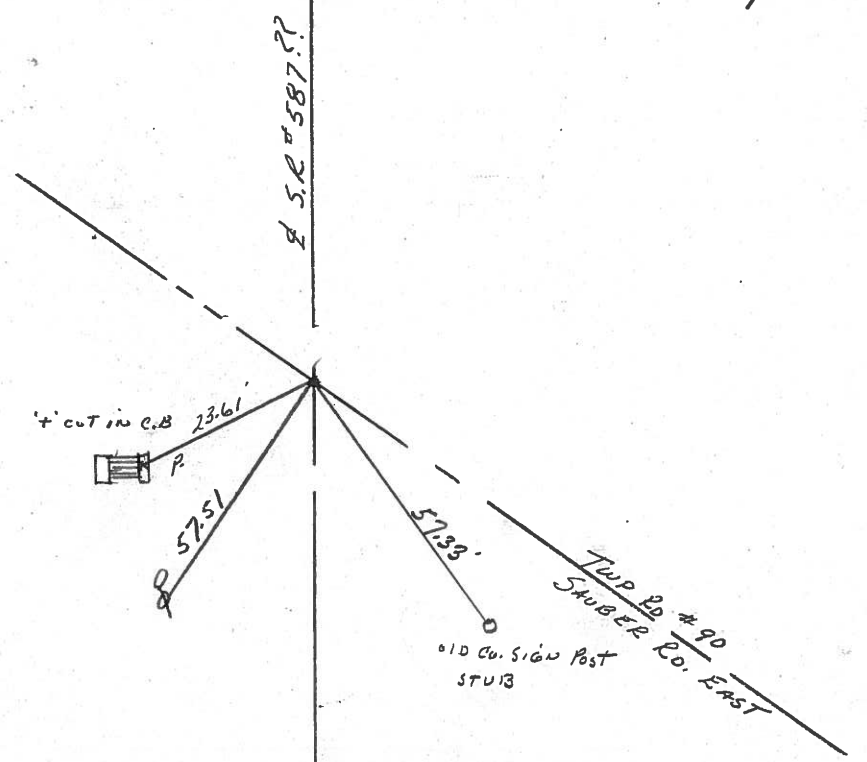
SECTION 13

T. 1 N. R. 13 E.

TYPE MONUMENT R.R. SPIKE
 ON SURFACE - BELOW 2" BELOW SURFACE
 LEFT - ☉ PAV'T. - RIGHT ☉ PAV'T.
 TO EDGE PAVEMENT
 S.L.M.

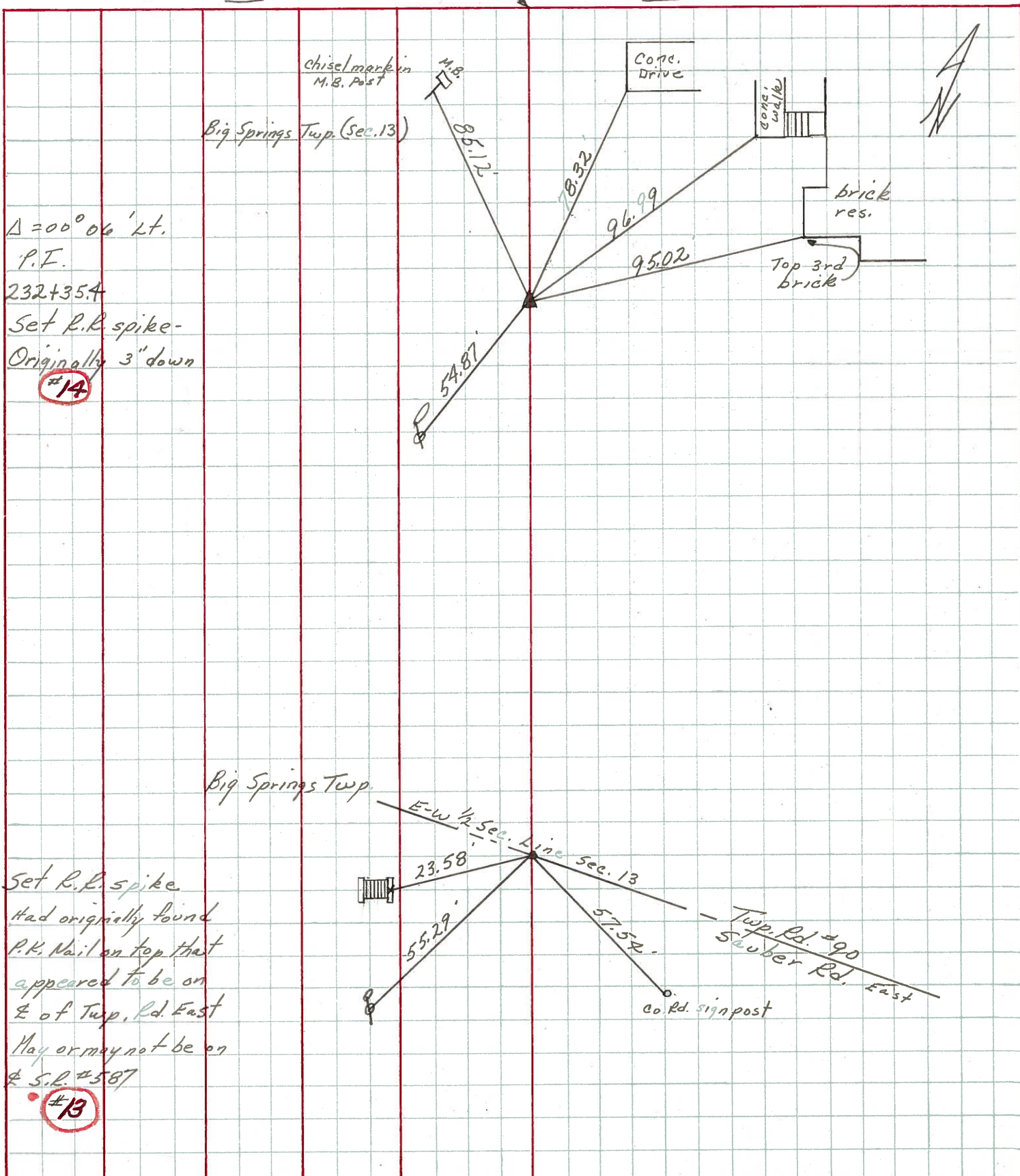


POINT WAS NOT CHECKED
TO SEE IF IT WAS ONE
OF S.R.#587



PERSONNEL	TITLE	PERSONNEL	TITLE	COUNTY	DATE
<u>Ash</u>				<u>Seneca</u>	<u>9/25/72</u>
<u>Cronin</u>				S. R. # <u>587</u>	WEATHER <u>overcast-rain</u>
<u>Ripple</u>				SEC.	TEMP. <u>67°</u>
<u>Anderson</u>					

DESCRIPTION Wyandot-Seneca Co. Line - Northwest JOB NO. _____



$\Delta = 00^{\circ} 06' \text{ Lt. P.I.}$
 232+35.4
 Set R.R. spike -
 Originally 3" down
 #14

Set R.R. spike
 Had originally found
 P.K. Nail on top that
 appeared to be on
 E of Twp. Rd. East
 May or may not be on
 S.R. #587
 #13