

O.D.O.T. DISTRICT 2 SURVEY OFFICE (USE ONLY)

PERSONNEL

REFERENCE NO. 14

SHEET 16 OF 30

NOTES FINGER

DATE 5/24/11

ROUTE SR 587

H.C. MOSER

WEATHER OVERCAST

COUNTY SENECA

R.C. HARBAUGH

TEMP. 65°

TOWNSHIP BIG SPRINGS

SECTION 13

DWG BY NIESE

PID PAVE TRAIN

T 1 N R 13 E

TYPE MONUMENT P.K./WASHER

ON SURFACE - ~~BELOW~~ ON

OFFSET 0 PAVEMENT ON LT : RT

10.6' TO RT EDGE PAVEMENT

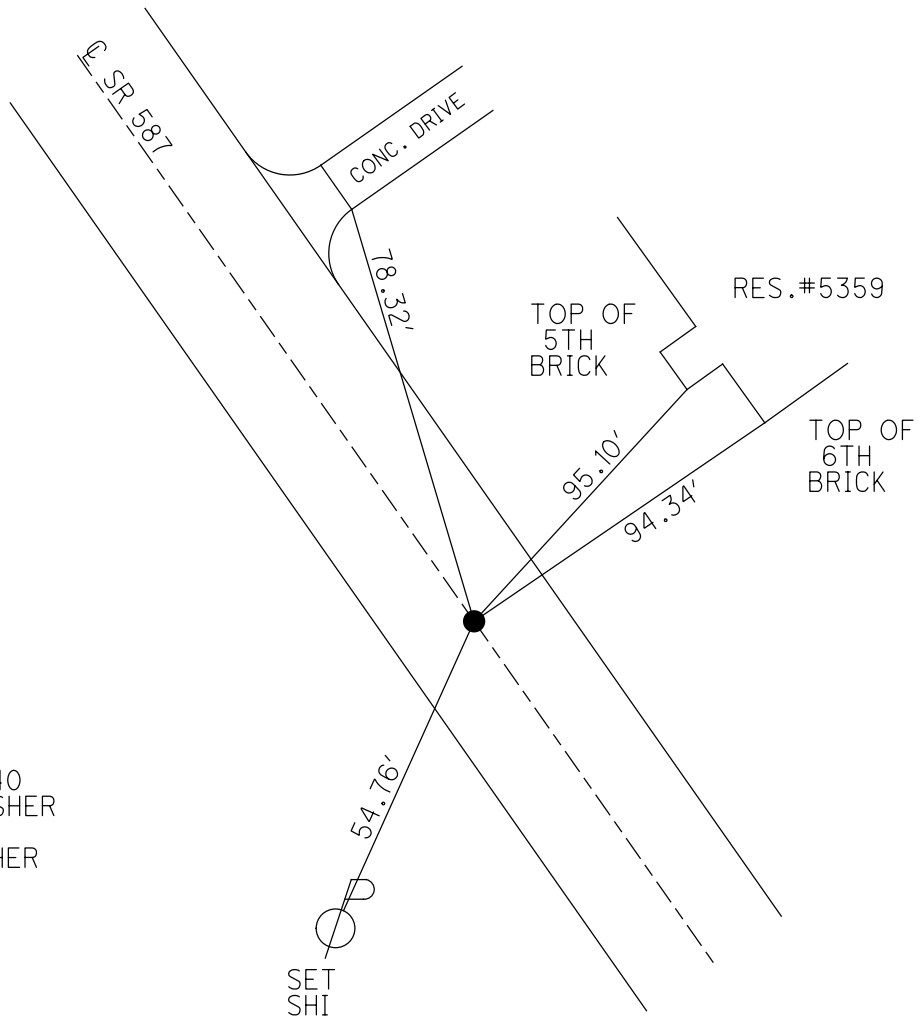
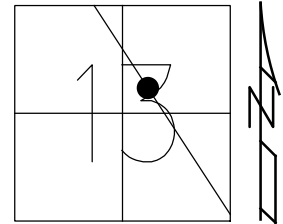
STATION: 232+35.40

HORZ.DATUM: NAD83

GEOID: 2009

GRID: NORTHING: 503264.799

EASTING: 1744366.813



RECORD: P.I.  
 $\Delta = 00^{\circ}06' \text{ LT}$   
 REC 232+35.40  
 SET P.K./WASHER  
 10/6/98, TR  
 FD P.K./WASHER  
 5/24/11, KPM  
 REF14  
 5/26/11, KPM  
 9/12/11  
 7/2/21, JMR

O.D.O.T. DISTRICT 2 SURVEY OFFICE (USE ONLY)

PERSONNEL

REFERENCE NO. 14

SHEET 16 OF 30

NOTES FINGER DATE 5/24/11

ROUTE SR 587

H.C. MOSER WEATHER OVERCAST

COUNTY SENECA

R.C. HARBAUGH TEMP. 65°

TOWNSHIP BIG SPRINGS

SECTION 13

DWG BY NIESE PID PAVE TRAIN

T 1 N R 13 E

TYPE MONUMENT P.K./WASHER

ON SURFACE - ~~BELOW~~ ON

OFFSET C PAVEMENT ON LT : RT

10.6' TO RT EDGE PAVEMENT

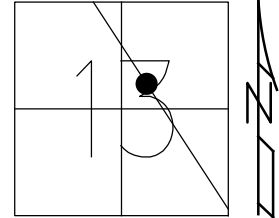
STATION: 232+35.40

HORZ. DATUM: \_\_\_\_\_

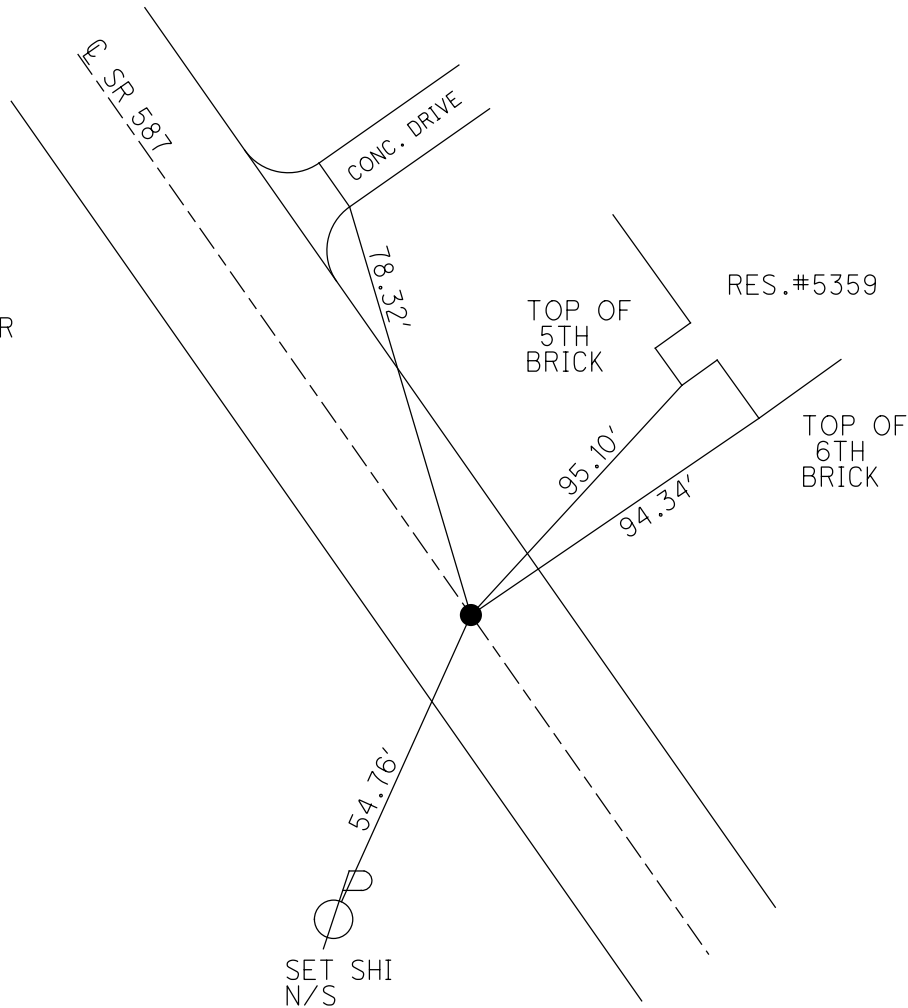
GEOID: \_\_\_\_\_

GRID: NORTHING: 503264.799

EASTING: 1744366.813



RECORD: P.I.  
 $\Delta = 00^{\circ}06' \text{ LT}$   
 REC 232+35.40  
 SET P.K./WASHER  
 10/6/98, TR  
 FD P.K./WASHER  
 5/24/11, KPM  
 REF14  
 5/26/11, KPM  
 9/12/11  
 7/2/21, JMR

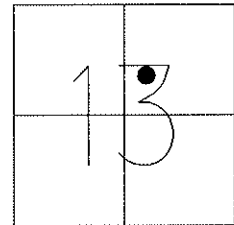


O.D.O.T. DISTRICT 2 SURVEY OFFICE

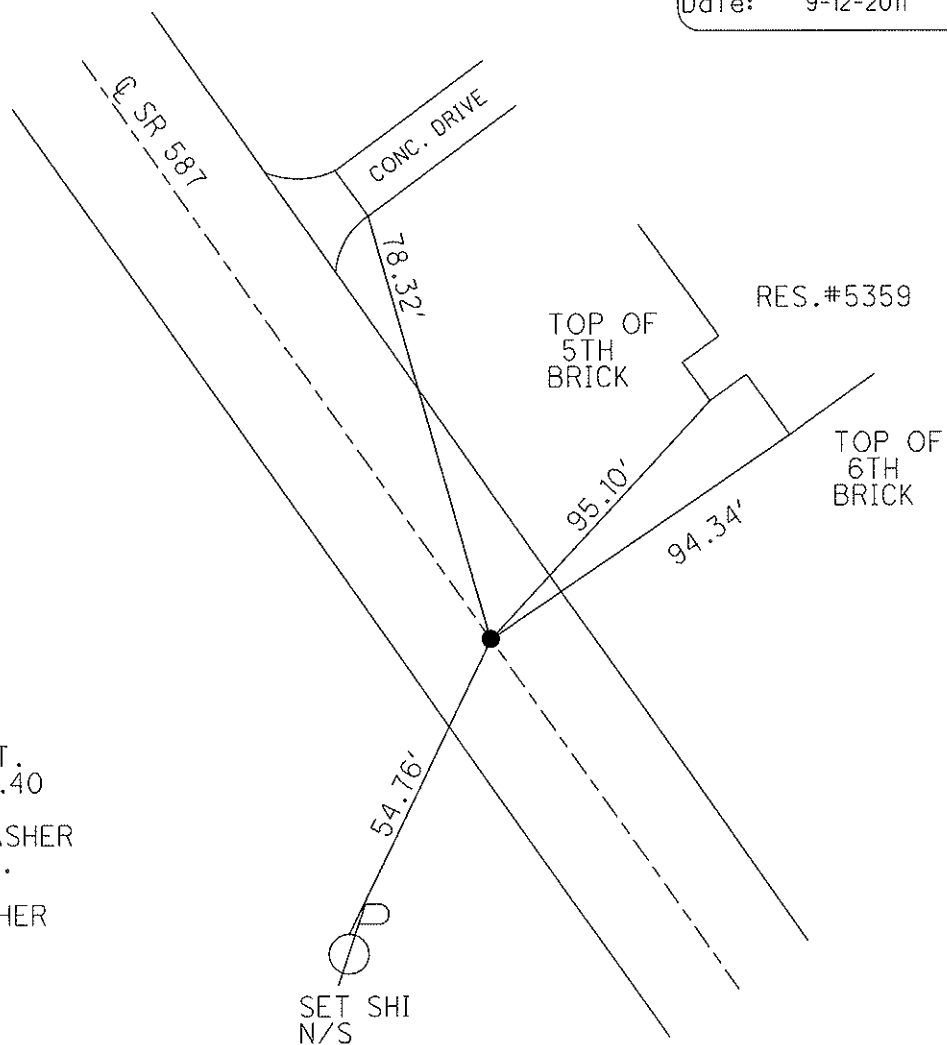
PERSONNEL	REFERENCE NO. <u>14</u>	SHEET <u>16</u> OF <u>30</u>
NOTES FINGER	DATE <u>5-24-11</u>	ROUTE <u>SR 587</u>
H.C. <u>MOSER</u>	WEATHER <u>OVERCAST</u>	COUNTY <u>SENECA</u>
R.C. <u>HARBAUGH</u>	TEMP. <u>65°</u>	TOWNSHIP <u>BIG SPRINGS</u>
		SECTION <u>13</u>
		T <u>1</u> N R <u>13</u> E

TYPE MONUMENT PK/WASHER  
 ON SURFACE - ~~BELOW~~ ON  
~~LEFT~~ - Q PAV'T - ~~RIGHT~~ ON  
10.6' TORT. EDGE PAVEMENT  
 S.L.M. 232+35.40

Grid: Northing: 503264.799 Easting: 1744366.813



Preventative Maintenance  
 Chip & Seal  
 Existing Point Uncovered  
 Date: 9-12-2011



RECORD PI:  
 $\Delta = 0^\circ 06' \text{ LT.}$   
 REC. 232+35.40

RESET PK/WASHER  
 10-6-98, T.R.

FD P.K./WASHER  
 5-24-11, KPM

GPS, REF14  
 5/26/11, KPM

SET SHI  
 N/S

# O.D.O.T. DISTRICT 2 SURVEY OFFICE

PERSONNEL

REFERENCE NO. 14

SHEET 15 OF 24

NOTES CANTERBURY

H.C. ROUSOS

R.C. LOEHRKE

DATE 5/5/98

WEATHER SUN

TEMP. +65° F

ROUTE 587

COUNTY SENECA

TOWNSHIP BIG SPRINGS

SECTION 13

T. 1 N. R 13 E.

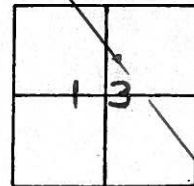
TYPE MONUMENT P.K. Washer ATOR R.R. SPK.

ON SURFACE - ~~BELOW~~ Surface

~~LEFT- & PAV'T. - RIGHT~~ ☒

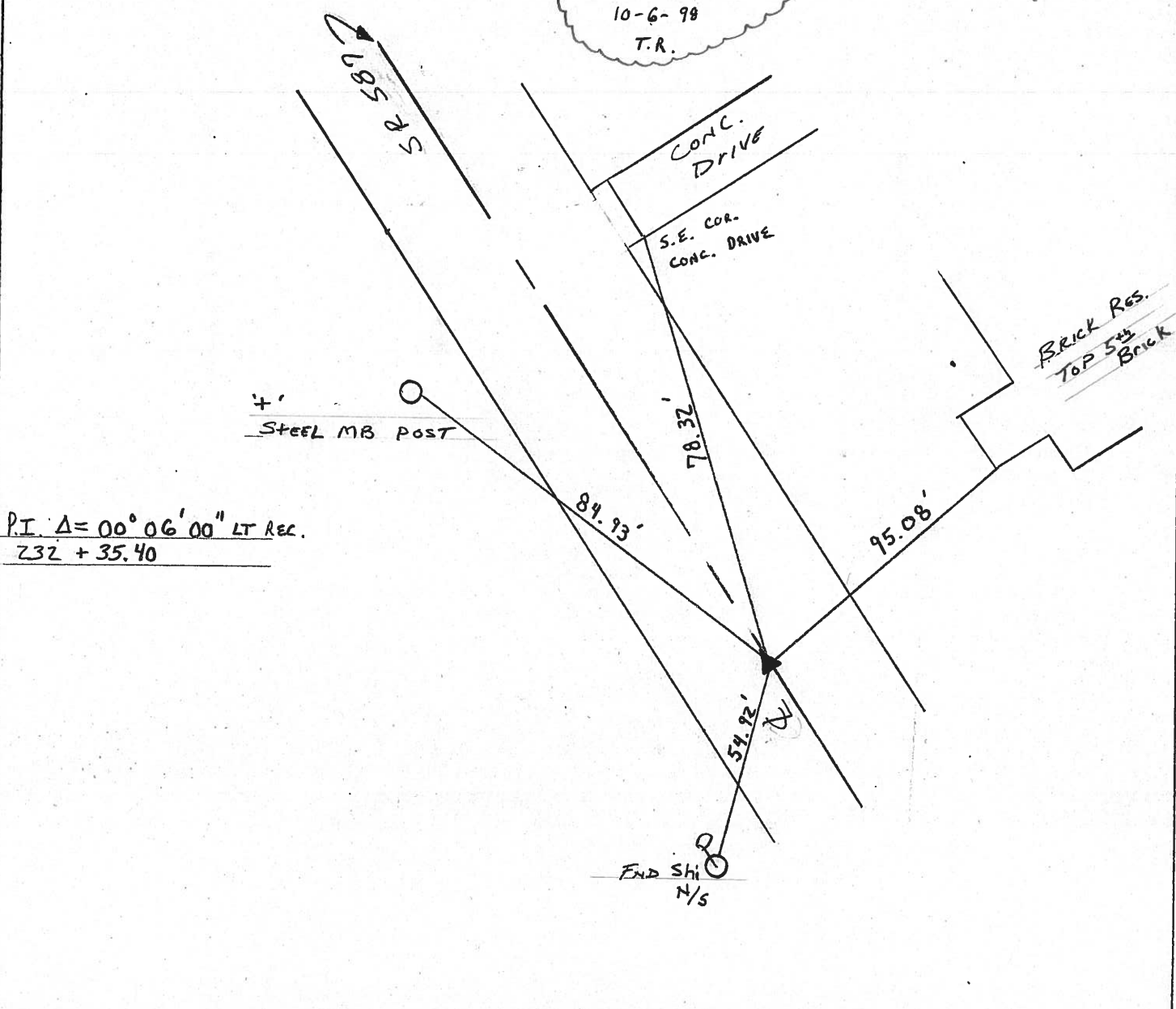
~~11.3 TO L+ EDGE PAVEMENT~~

S.L. ~~PK~~ +069.20



S.L.M. = 4:401 ±

RESET P.K./WASHER  
10-6-98  
T.R.



# O.D.O.T. DISTRICT 2 SURVEY OFFICE

PERSONNEL

REFERENCE NO. 14

SHEET 15 OF       

NOTES CRONIN

DRAWN 8/29/85

ROUTE # 587

H.C. RIPPLE

DATE 8/26/85

COUNTY SENECA

R.C. BARBOUR

WEATHER SUNNY

TOWNSHIP BIG SPRINGS

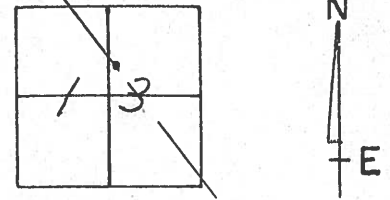
GEYMAN

TEMP. 70°

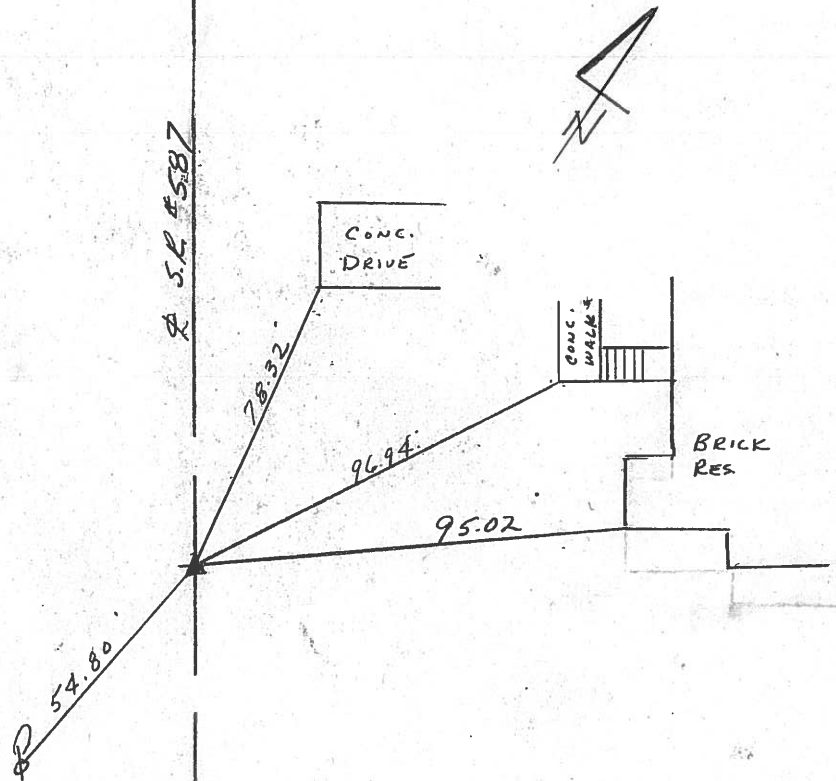
SECTION 13

T1 N R13 E

TYPE MONUMENT P.V. WASHER ATOP R.R. SPIKE  
 ON SURFACE - BELOW ON SURFACE  
 LEFT - & PAVT. - RIGHT & PAVT.  
 TO EDGE PAVEMENT  
 S.L.M. 4.401 E



P.I. Δ = 00° 06' 00" - Lt. Rec.  
232 + 35.40



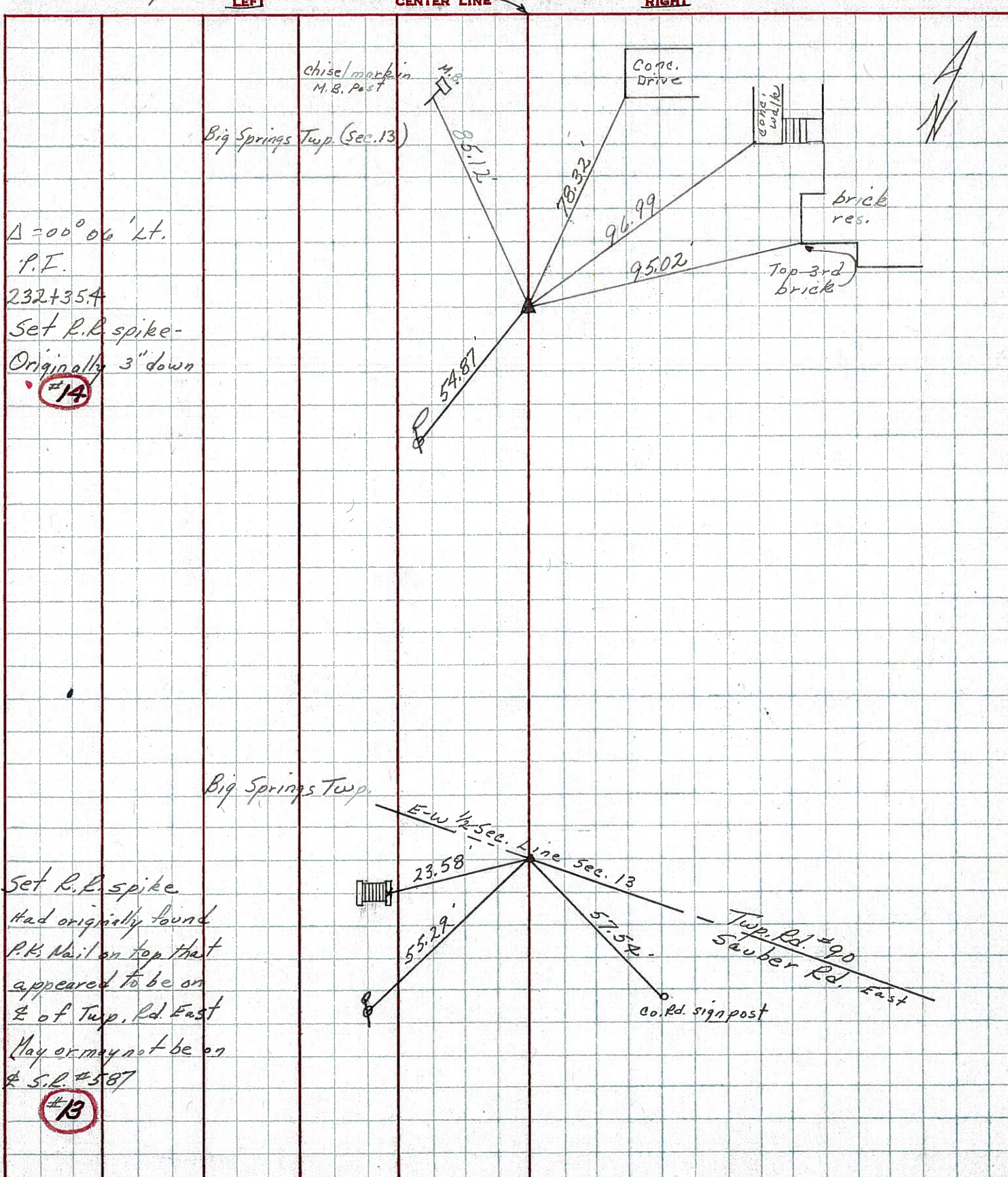


PERSONNEL	TITLE	PERSONNEL	TITLE
Ash			
Cronin			
Ripple			
Anderson			

COUNTY Seneca DATE 9/25/72  
 S. R. #587 WEATHER overcast-rain  
 SEC. \_\_\_\_\_ TEMP 67°

DESCRIPTION Wyandot-Seneca Co. Line-Northwest

JOB NO. \_\_\_\_\_



$\Delta = 00^\circ 06' \text{ Lt.}$   
 P.F.  
 232+35.4  
 Set R.P. spike-  
 Originally 3" down  
 #14

Set R.P. spike  
 Had originally found  
 P.K. Nail on top that  
 appeared to be on  
 E of Twp. Rd. East  
 May or may not be on  
 S.R. #587  
 #13



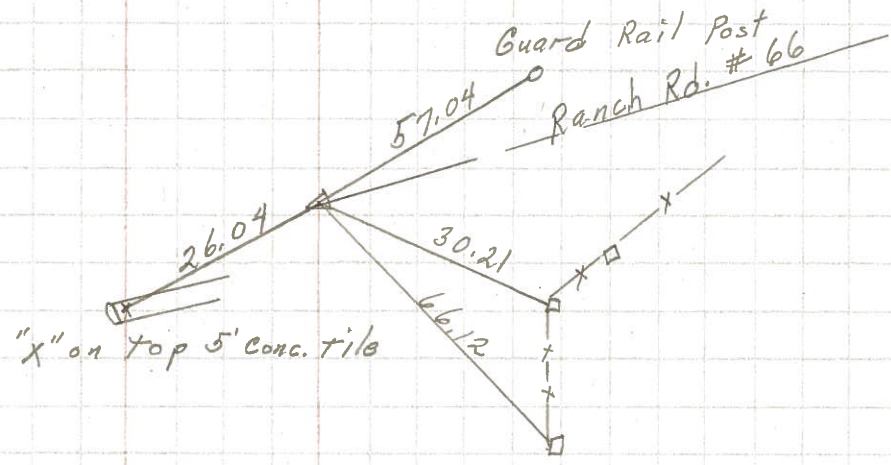
PERSONNEL	TITLE	PERSONNEL	TITLE	COUNTY	DATE	S. R.	WEATHER	TEMP.
Schnöder				Seneca	11-10-69	587	Cloudy	40
Mosser								
Barbour								
Potts								

DESCRIPTION Wyandot Co. Line to N. Corp. of New Riegel JOB NO. \_\_\_\_\_

18

R.R. spk. 1" down between sec 11 & 12

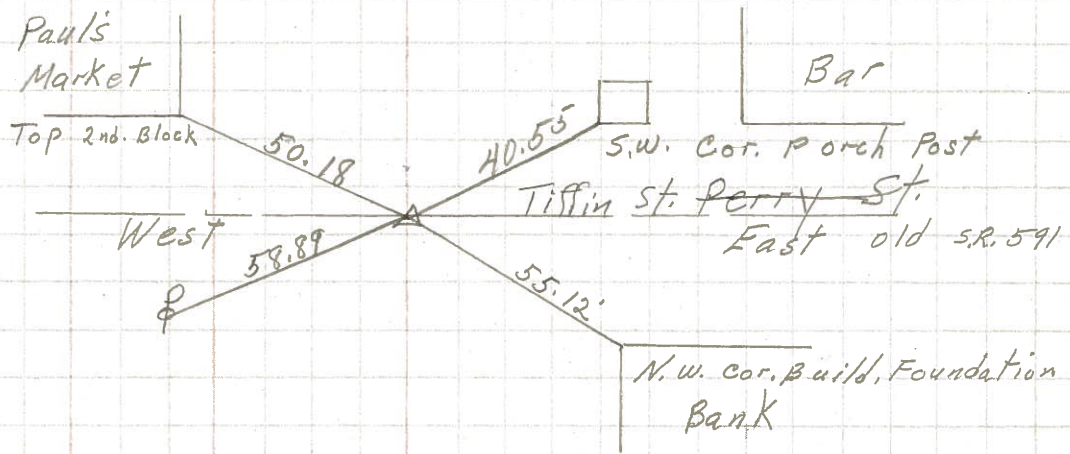
8726



16

260+15.7 Fd. R.R. spk. on top

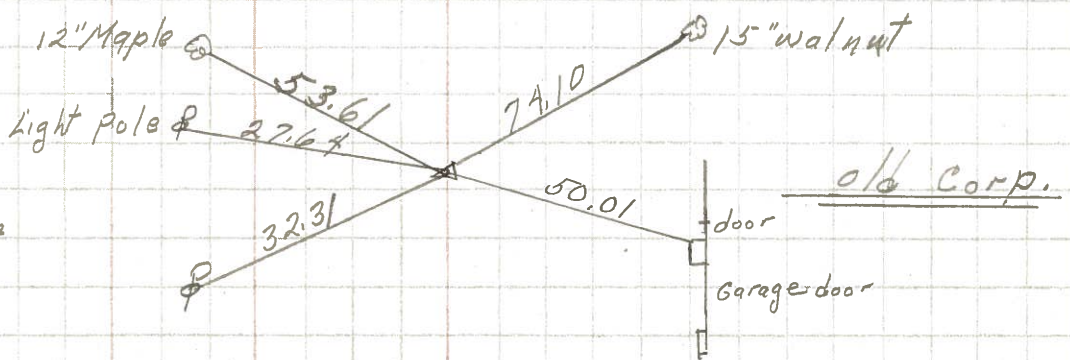
8725



15

249+06.7 R.R. spk. 2" down on & R/W

8724



14

R.R. spk. on & R/W set P.K. Nail on top

8723

