

O.D.O.T. DISTRICT 2 SURVEY OFFICE (USE ONLY)

PERSONNEL

REFERENCE NO. 15

SHEET 17 OF 30

NOTES FINGER

DATE 5/24/11

ROUTE SR 587

H.C. MOSER

WEATHER OVERCAST

COUNTY SENECA

R.C. HARBAUGH

TEMP. 65°

TOWNSHIP BIG SPRINGS

SECTION 13

DWG BY NIESE

PID PAVE TRAIN

T 1 N R 13 E

TYPE MONUMENT P.K./WASHER

ON SURFACE - ~~BELOW~~ ON

OFFSET 10.2' 10.2' TO RT RT EDGE PAVEMENT

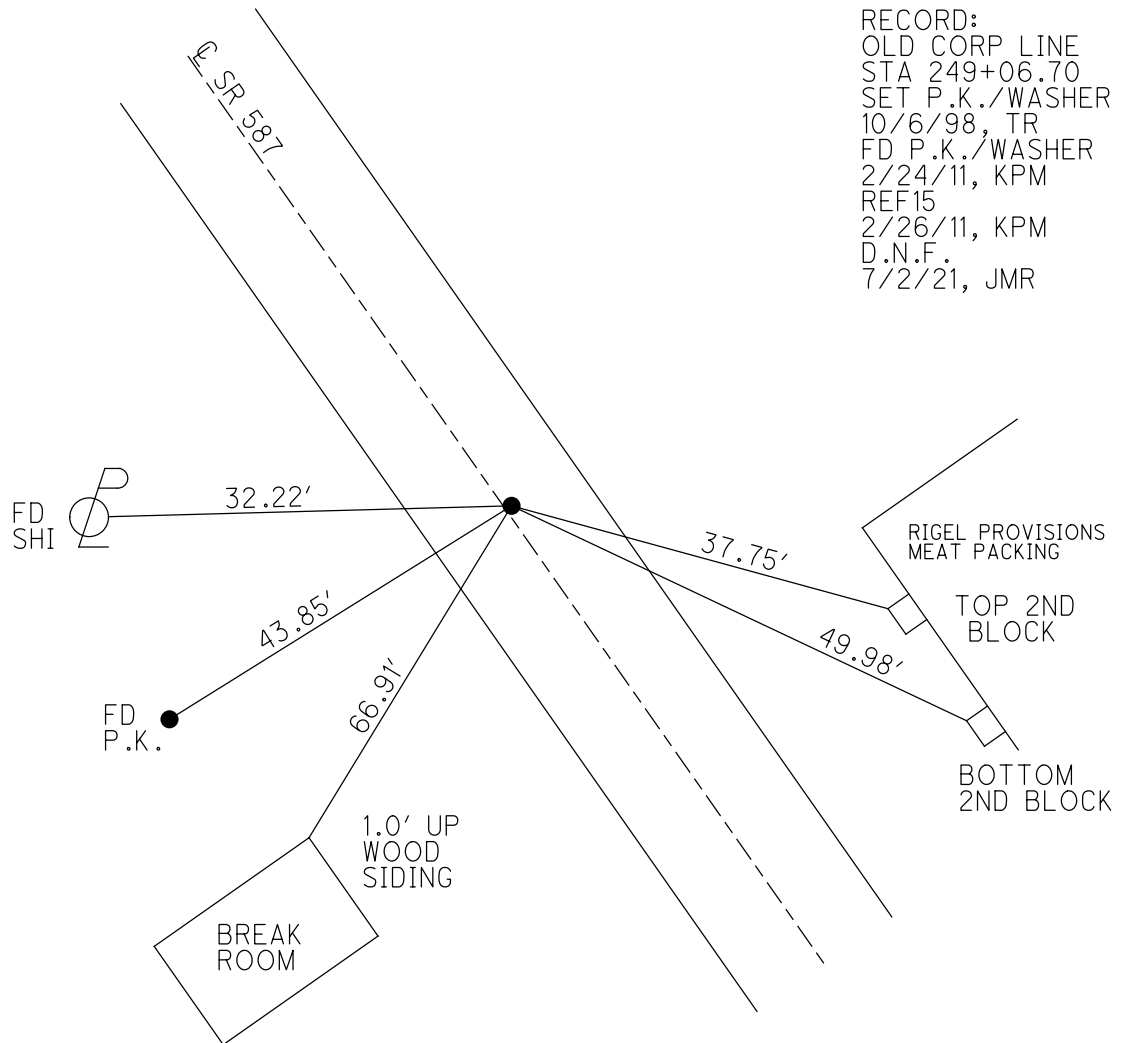
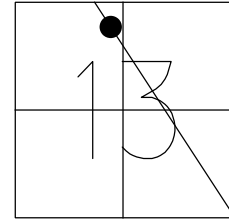
STATION: 249+06.70

HORIZ.DATUM: NAD83

GEOID: 2009

GRID: NORTHING: 504656.993

EASTING: 1743444.708



RECORD:  
 OLD CORP LINE  
 STA 249+06.70  
 SET P.K./WASHER  
 10/6/98, TR  
 FD P.K./WASHER  
 2/24/11, KPM  
 REF15  
 2/26/11, KPM  
 D.N.F.  
 7/2/21, JMR

O.D.O.T. DISTRICT 2 SURVEY OFFICE (USE ONLY)

PERSONNEL

REFERENCE NO. 15

SHEET 17 OF 30

NOTES FINGER

DATE 5/24/11

ROUTE SR 587

H.C. MOSER

WEATHER OVERCAST

COUNTY SENECA

R.C. HARBAUGH

TEMP. 65°

TOWNSHIP BIG SPRINGS

DWG BY NIESE PID PAVE TRAIN

SECTION 13

T 1 N R 13 E

TYPE MONUMENT P.K./WASHER

ON SURFACE - ~~BELOW~~ ON

OFFSET 10.2' TO RT EDGE PAVEMENT

10.2' TO RT EDGE PAVEMENT

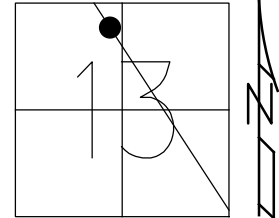
STATION: 249+06.70

HORIZ.DATUM: \_\_\_\_\_

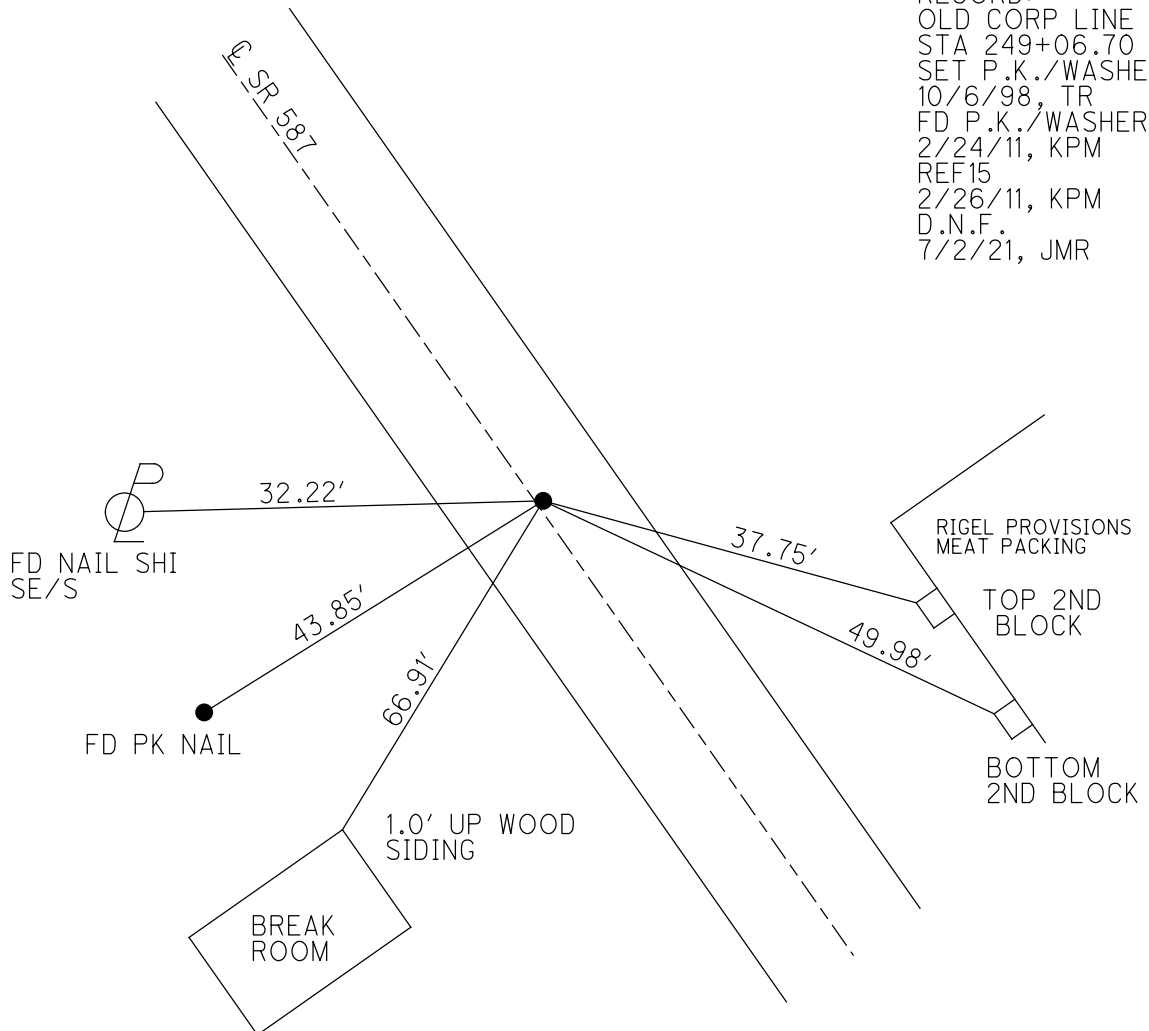
GEOID: \_\_\_\_\_

GRID: NORTHING: 504656.993

EASTING: 1743444.708



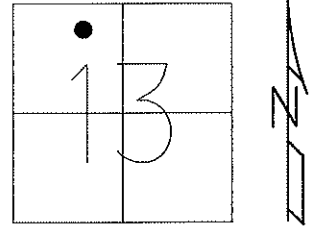
RECORD:  
 OLD CORP LINE  
 STA 249+06.70  
 SET P.K./WASHER  
 10/6/98, TR  
 FD P.K./WASHER  
 2/24/11, KPM  
 REF15  
 2/26/11, KPM  
 D.N.F.  
 7/2/21, JMR



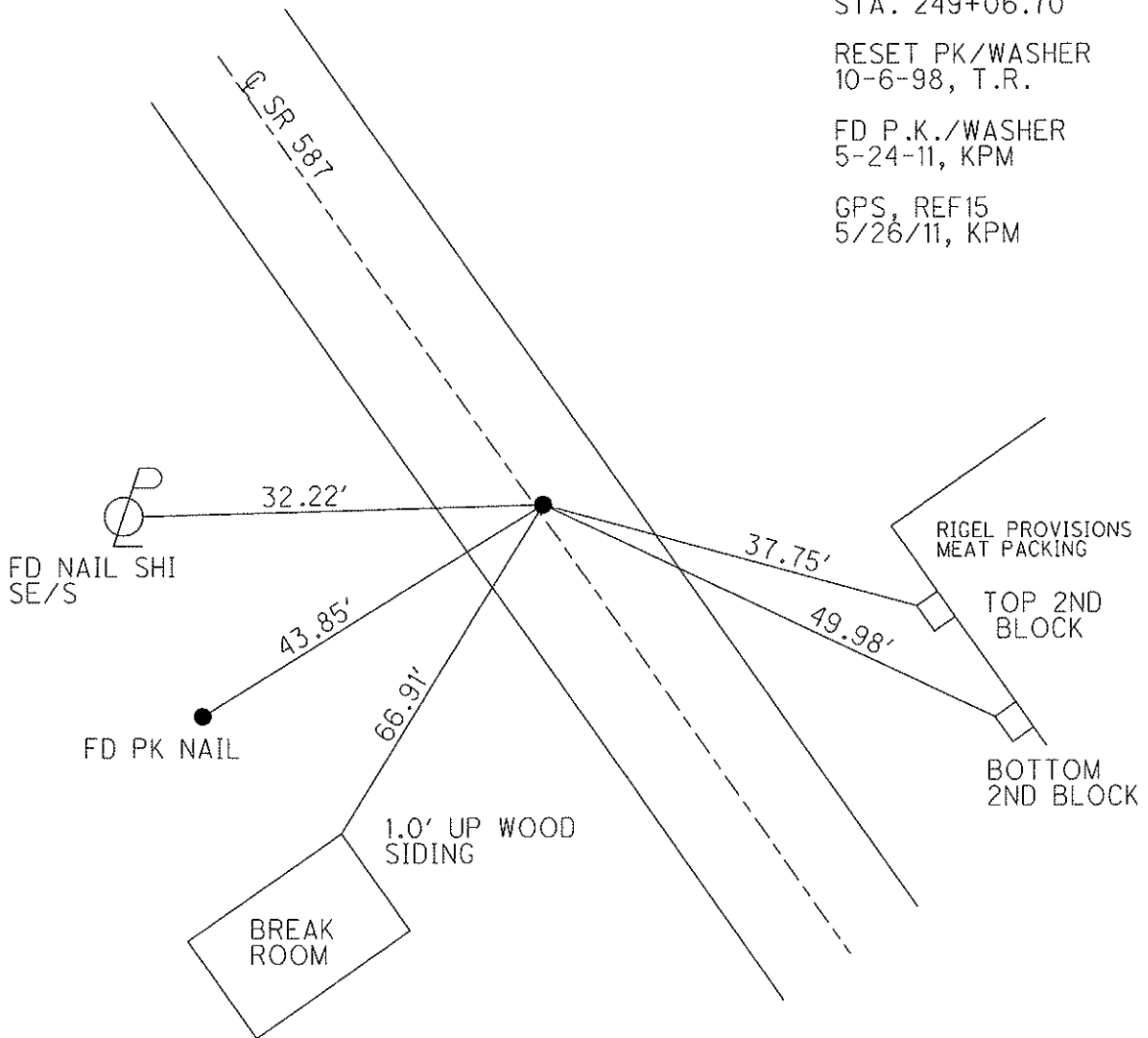
O.D.O.T. DISTRICT 2 SURVEY OFFICE

PERSONNEL \_\_\_\_\_ REFERENCE NO. 15 SHEET 17 OF 30  
 NOTES FINGER \_\_\_\_\_ DATE 5-24-11 ROUTE SR 587  
 H.C. MOSER WEATHER OVERCAST COUNTY SENECA  
 R.C. HARBAUGH TEMP. 65° TOWNSHIP BIG SPRINGS  
 \_\_\_\_\_ SECTION 33  
 \_\_\_\_\_ T 1 N R 13 E

TYPE MONUMENT PK WASHER  
 ON SURFACE - ~~BELOW~~ ON \_\_\_\_\_  
~~LEFT = 0' PAV'T~~ - RIGHT 0.9'  
10.2' TORT. EDGE PAVEMENT  
 S.L.M. 249+06.70  
 Grid: Northing: 504656.993 Easting: 1743444.708



RECORD:  
 OLD CORP. LINE  
 STA. 249+06.70  
 RESET PK/WASHER  
 10-6-98, T.R.  
 FD P.K./WASHER  
 5-24-11, KPM  
 GPS, REF15  
 5/26/11, KPM



# O.D.O.T. DISTRICT 2 SURVEY OFFICE

PERSONNEL

REFERENCE NO. 15

SHEET 16 OF 24

NOTES CANTERBURY

H.C. ROUSOS

R.C. LOEHRKE

DATE 5-5-98

WEATHER SUN

TEMP. +65°F

ROUTE 587

COUNTY SENECA

TOWNSHIP BIG SPRINGS

SECTION 13

T 1 N 13 E

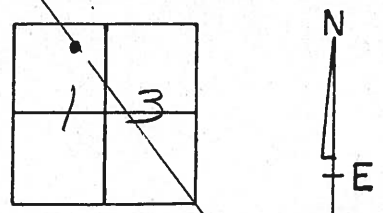
TYPE MONUMENT Lg. RR SPIKE

~~ON SURFACE~~ - BELOW 1" Down

~~LEFT- & PAVT.~~ - RIGHT 1.5' RT

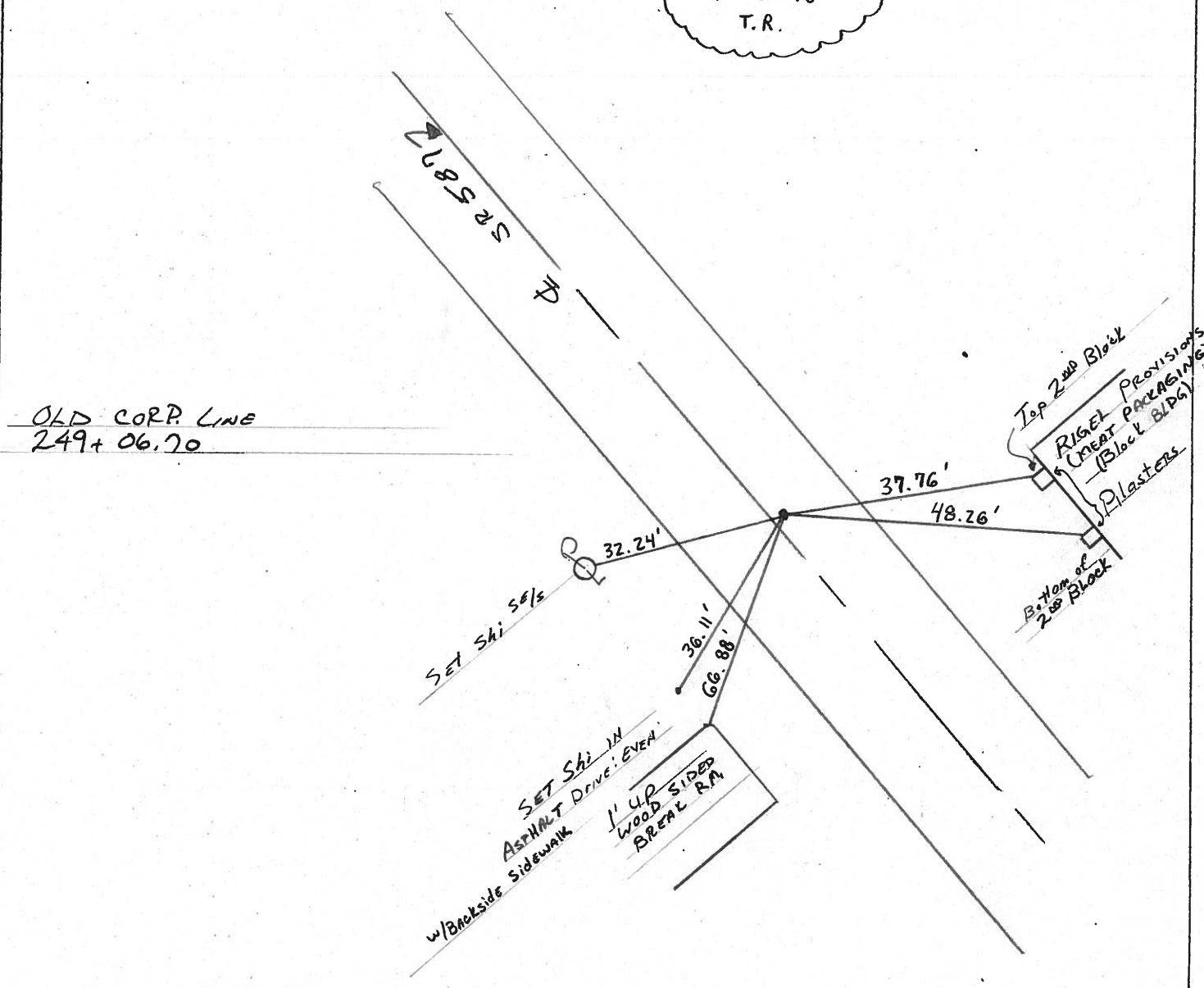
9.6' TO RT EDGE PAVEMENT

S.L.M.K. 7+591.56



S.L.M. = 4.717 ±

RESET P.K. / WASHER  
10-6-98  
T.R.



# O.D.O.T. DISTRICT 2 SURVEY OFFICE

PERSONNEL

REFERENCE NO. 15

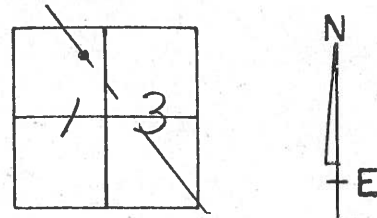
SHEET 16 OF       

NOTES CRONIN  
 H.C. RIPPLE  
 R.C. BARBOUR  
GEYMAN

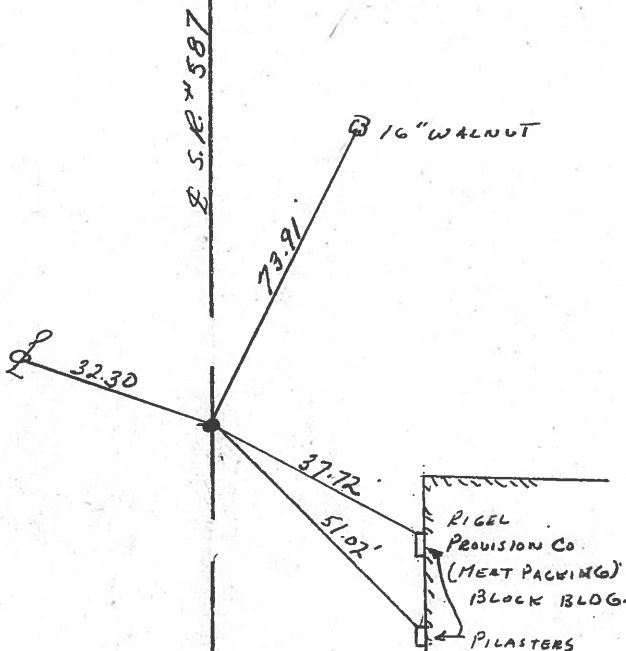
DRAWN 8/29/85  
 DATE 8/26/85  
 WEATHER SUNNY  
 TEMP. 70°

ROUTE #587  
 COUNTY SENECA  
 TOWNSHIP BIG SPRINGS  
 SECTION 13  
T 1 N R 13 E

TYPE MONUMENT R.R. SPIKE  
 ON SURFACE - BELOW 1/2" BELOW SURFACE  
 LEFT - ☉ PAV'T. - RIGHT 1' RT. & Pavt.  
TO EDGE PAVEMENT  
 S.L.M. 4.717 ±

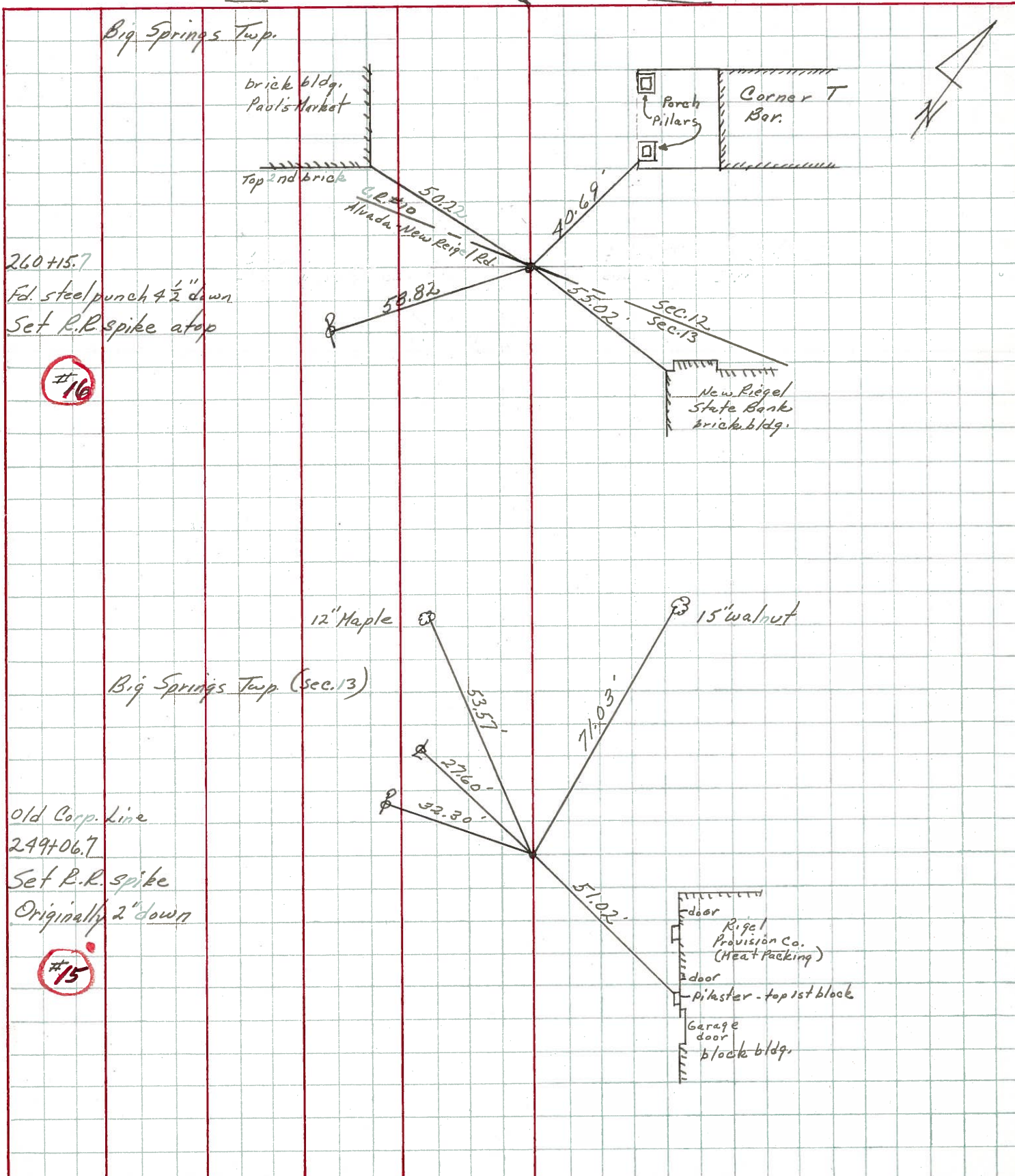


OLD CORP. LINE  
249+06.70



PERSONNEL	TITLE	PERSONNEL	TITLE	COUNTY	DATE
Ash				Seneca	9/28/72
Cronin				S. R. #587	WEATHER overcast
Ripple				SEC.	TEMP. 62°
Anderson					

DESCRIPTION Wyandot-Seneca Co. Line - Northwest JOB NO. \_\_\_\_\_





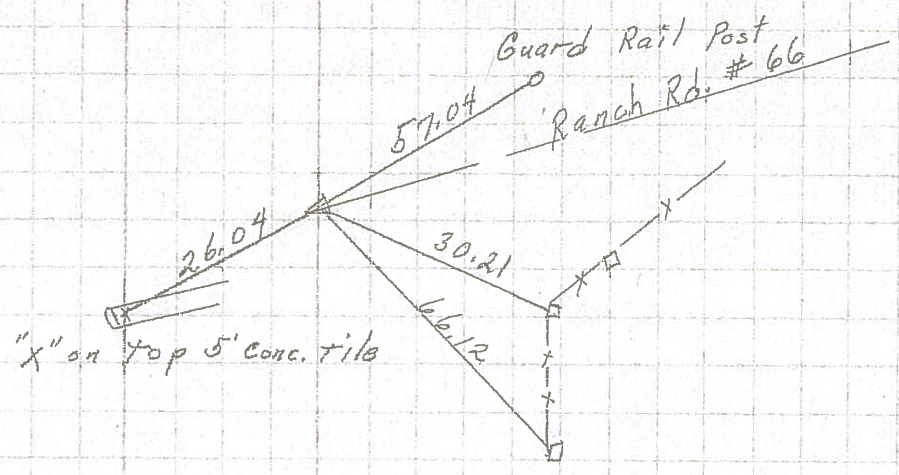
PERSONNEL	TITLE	PERSONNEL	TITLE	COUNTY	DATE
Schnäider				Seneca	11-10-69
Mosser				S. R. 587	WEATHER Cloudy
Barbour				SEC.	TEMP. 40
Potts					

DESCRIPTION Wyondot Co. Line to N. Corp. of New Riegel JOB NO. \_\_\_\_\_

18

R.R. spk. 1" down between sec 11 & 13

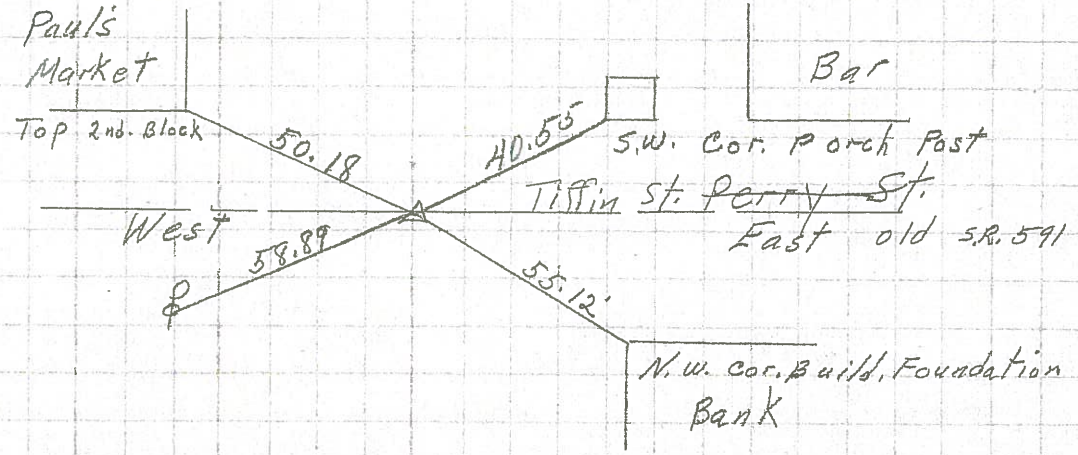
8726



16

260+15.7 Fd. R.R. spk. on top

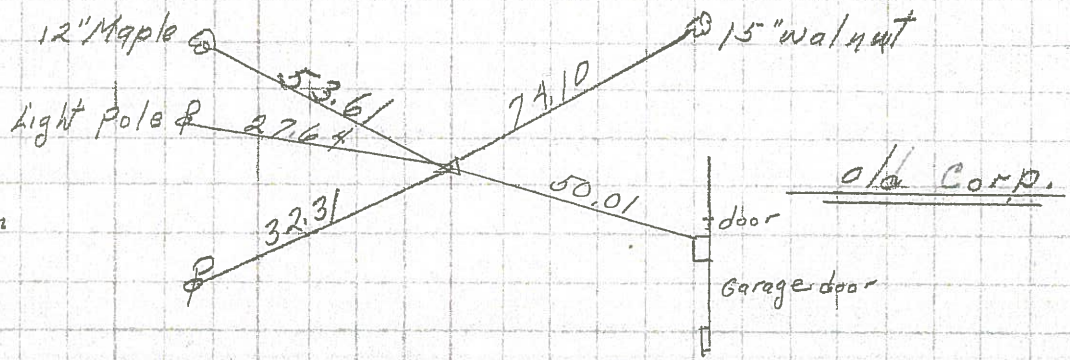
8725



15

249+06.7 R.R. spk. 2" down on & R/W

8724



14

Note: South Corp. Line of New Riegel was moved South to sta. 245+97  
232+35.4 R.R. spk. on & R/W set P.K. Nail on top

8723

