

O.D.O.T. DISTRICT 2 SURVEY OFFICE (USE ONLY)

PERSONNEL

REFERENCE NO. 16

SHEET 18 OF 30

NOTES FINGER
 H.C. MOSER
 R.C. HARBAUGH

DATE 5/24/11
 WEATHER OVERCAST
 TEMP. 65°

ROUTE SR 587
 COUNTY SENECA
 TOWNSHIP BIG SPRINGS
 SECTION 12
 T 1 N R 13 E

DWG BY NIESE PID PAVE TRAIN

TYPE MONUMENT MAG

ON SURFACE - ~~BELOW~~ ON

OFFSET Q PAVEMENT 0.6' ~~LT~~ : RT

10.2' TO RT EDGE PAVEMENT

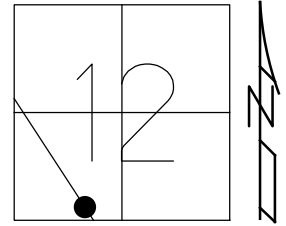
STATION: 260+15.70

HORZ.DATUM: NAD83

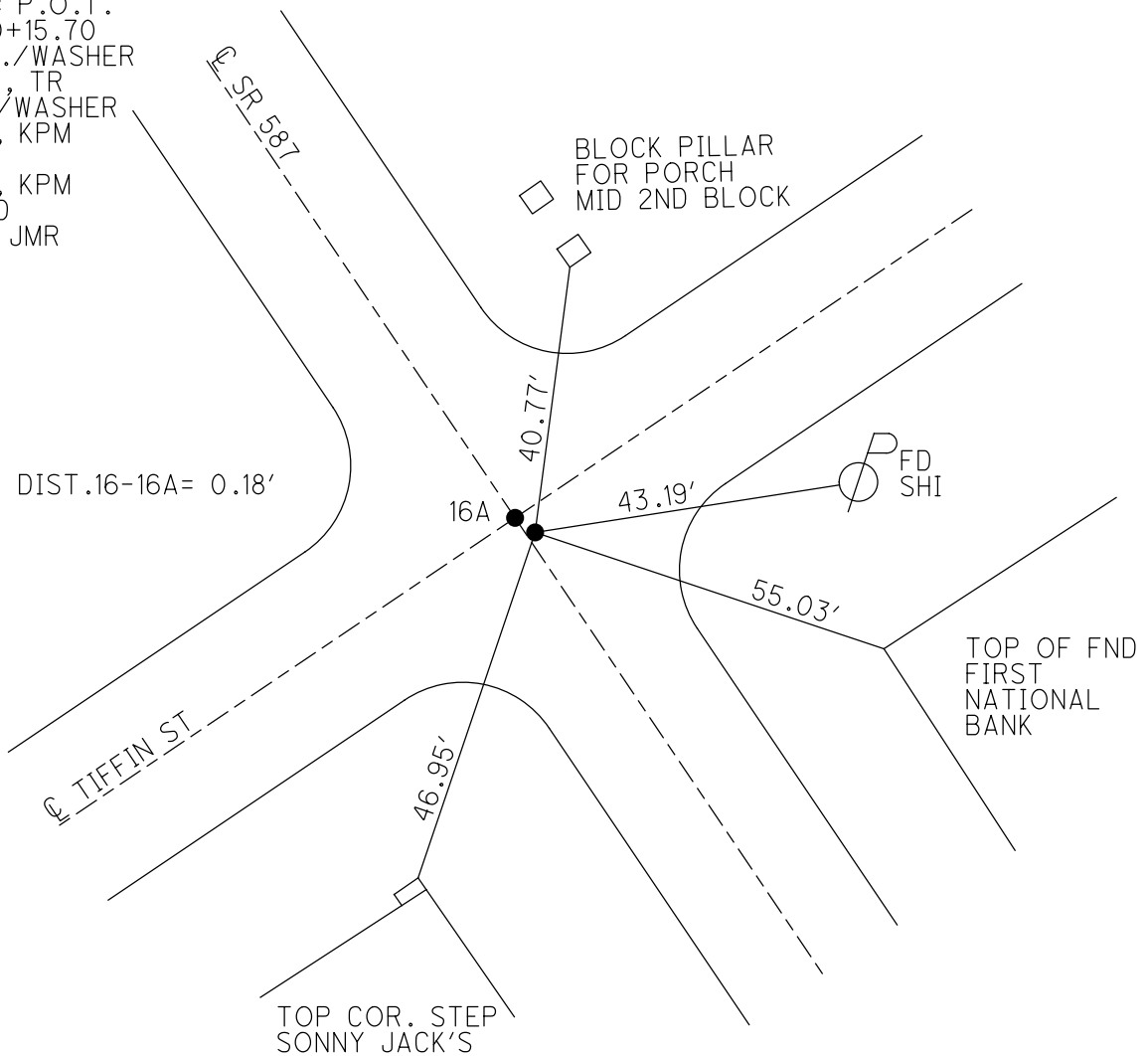
GEOID: 2009

GRID: NORTHING: 505581.332

EASTING: 1742831.854



RECORD: P.O.T.
 STA 260+15.70
 SET P.K./WASHER
 10/6/98, TR
 FD P.K./WASHER
 5/24/11, KPM
 REFA16
 5/26/11, KPM
 COVERED
 7/2/21, JMR



O.D.O.T. DISTRICT 2 SURVEY OFFICE (USE ONLY)

PERSONNEL

REFERENCE NO. 16

SHEET 18 OF 30

NOTES FINGER

DATE 5/24/11

ROUTE SR 587

H.C. MOSE

WEATHER OVERCAST

COUNTY SENECA

R.C. HARBAUGH

TEMP. 65°

TOWNSHIP BIG SPRINGS

SECTION 12

DWG BY NIESE

PID PAVE TRAIN

T 1 N R 13 E

TYPE MONUMENT MAG

ON SURFACE - ~~BELOW~~ ON

OFFSET 0.6' \pm : RT

10.2' TO RT EDGE PAVEMENT

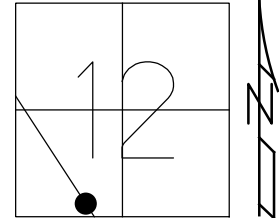
STATION: 260+15.70

HORZ. DATUM: _____

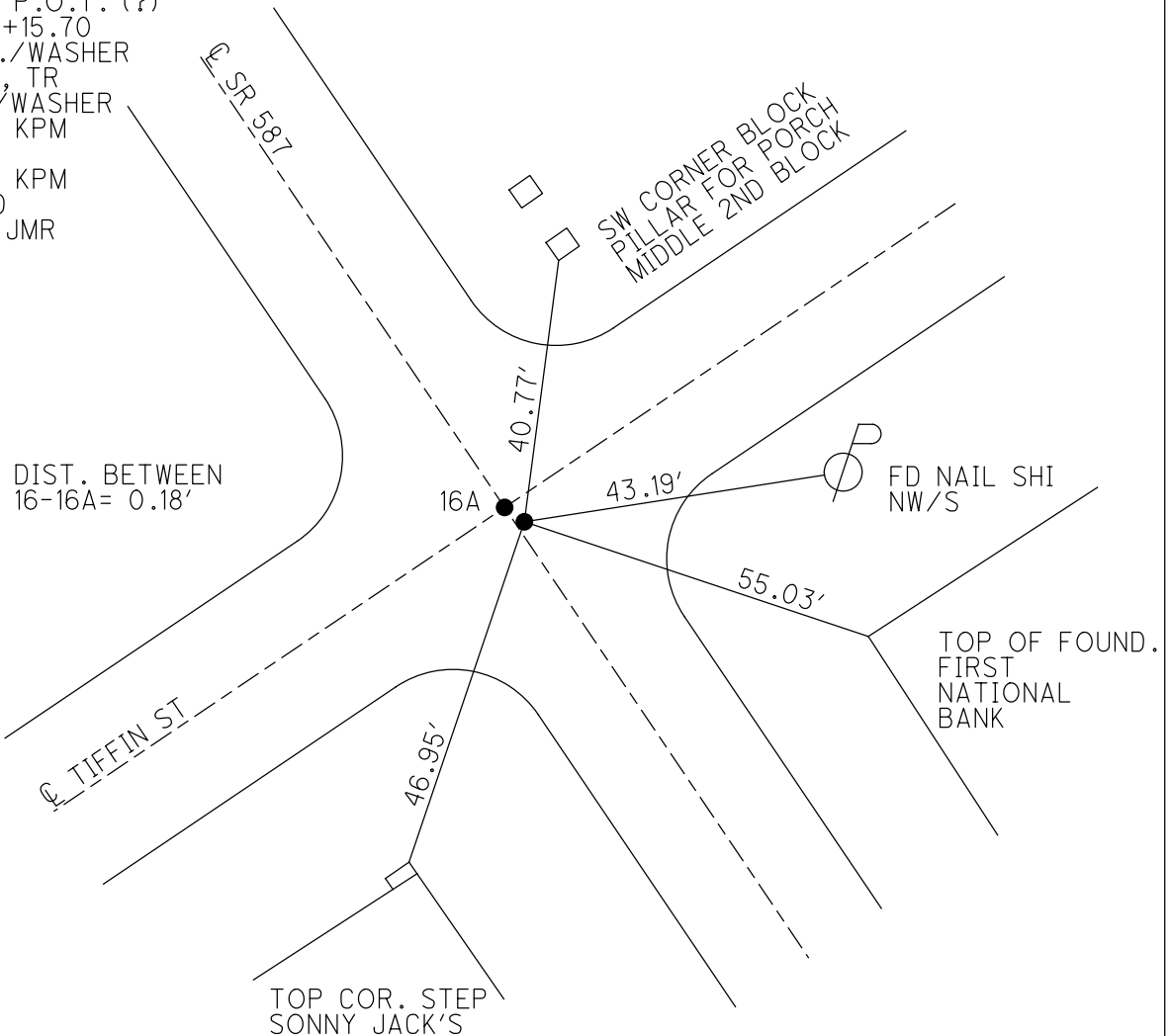
GEOID: _____

GRID: NORTHING: 505581.332

EASTING: 1742831.854



RECORD: P.O.T. (?)
 STA 260+15.70
 SET P.K./WASHER
 10/6/98, TR
 FD P.K./WASHER
 5/24/11, KPM
 REFA16
 5/26/11, KPM
 COVERED
 7/2/21, JMR



O.D.O.T. DISTRICT 2 SURVEY OFFICE

PERSONNEL _____

REFERENCE NO. 16

SHEET 18 OF 30

NOTES FINGER _____

DATE 5-24-11

ROUTE SR 587

H.C. MOSER

WEATHER OVERCAST

COUNTY SENECA

R.C. HARBAUGH

TEMP. 75°

TOWNSHIP BIG SPRINGS

SECTION 12

T 1 N R 13 E

TYPE MONUMENT MAG

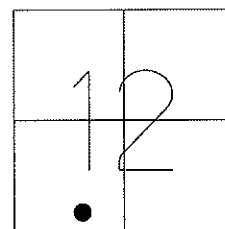
ON SURFACE - ~~BELOW~~ ON _____

~~LEFT~~ - CL PAV'T - ~~RIGHT~~ 0.6'

- TO - EDGE PAVEMENT

S.L.M. 260+15.70

Grid: Northing: 505581.332 Easting: 1742831.854



RECORD P.O.T.(?)
260+15.70

RESET PK/WASHER
10-6-98, T.R.

FD P.K/WASHER
5/24/11, KPM

GPS, REF A16
5/26/11, KPM

