

O.D.O.T. DISTRICT 2 SURVEY OFFICE (USE ONLY)

PERSONNEL

REFERENCE NO. 16A

SHEET 19 OF 30

NOTES FINGER DATE 5/24/11
 H.C. MOSER WEATHER OVERCAST
 R.C. HARBAUGH TEMP. 75°

ROUTE SR 587
 COUNTY SENECA
 TOWNSHIP BIG SPRINGS
 SECTION 12
 T 1 N R 13 E

DWG BY NIESE PID PAVE TRAIN

TYPE MONUMENT MAG

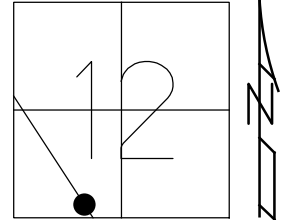
ON SURFACE - ~~BELOW~~ ON

OFFSET ☉ PAVEMENT ON LT : RT
- TO - EDGE PAVEMENT

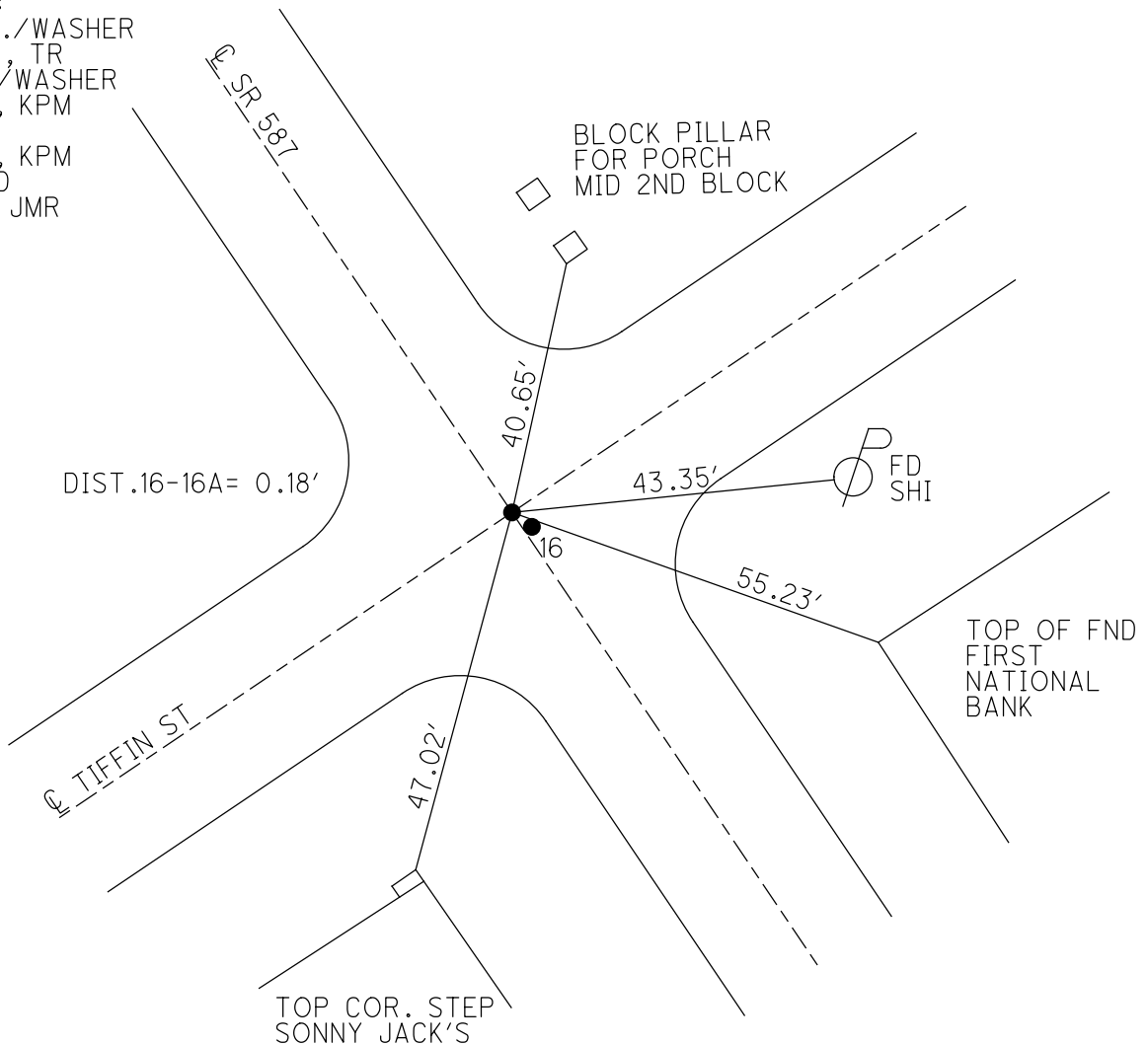
STATION: 260+15.88

HORZ.DATUM: NAD83 GEOID: 2009

GRID: NORTHING: 505581.464 EASTING: 1742831.708



RECORD:
 SET P.K./WASHER
 10/6/98, TR
 FD P.K./WASHER
 5/24/11, KPM
 REB16
 5/26/11, KPM
 COVERED
 7/2/21, JMR



O.D.O.T. DISTRICT 2 SURVEY OFFICE (USE ONLY)

PERSONNEL

REFERENCE NO. 16A

SHEET 19 OF 30

NOTES FINGER

DATE 5/24/11

ROUTE SR 587

H.C. MOSE

WEATHER OVERCAST

COUNTY SENECA

R.C. HARBAUGH

TEMP. 75°

TOWNSHIP BIG SPRINGS

SECTION 12

DWG BY NIESE

PID PAVE TRAIN

T 1 N R 13 E

TYPE MONUMENT MAG

ON SURFACE - ~~BELOW~~ ON

OFFSET Q PAVEMENT ON LT : RT

- TO - EDGE PAVEMENT

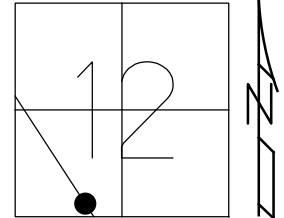
STATION: 260+15.88

HORIZ.DATUM: _____

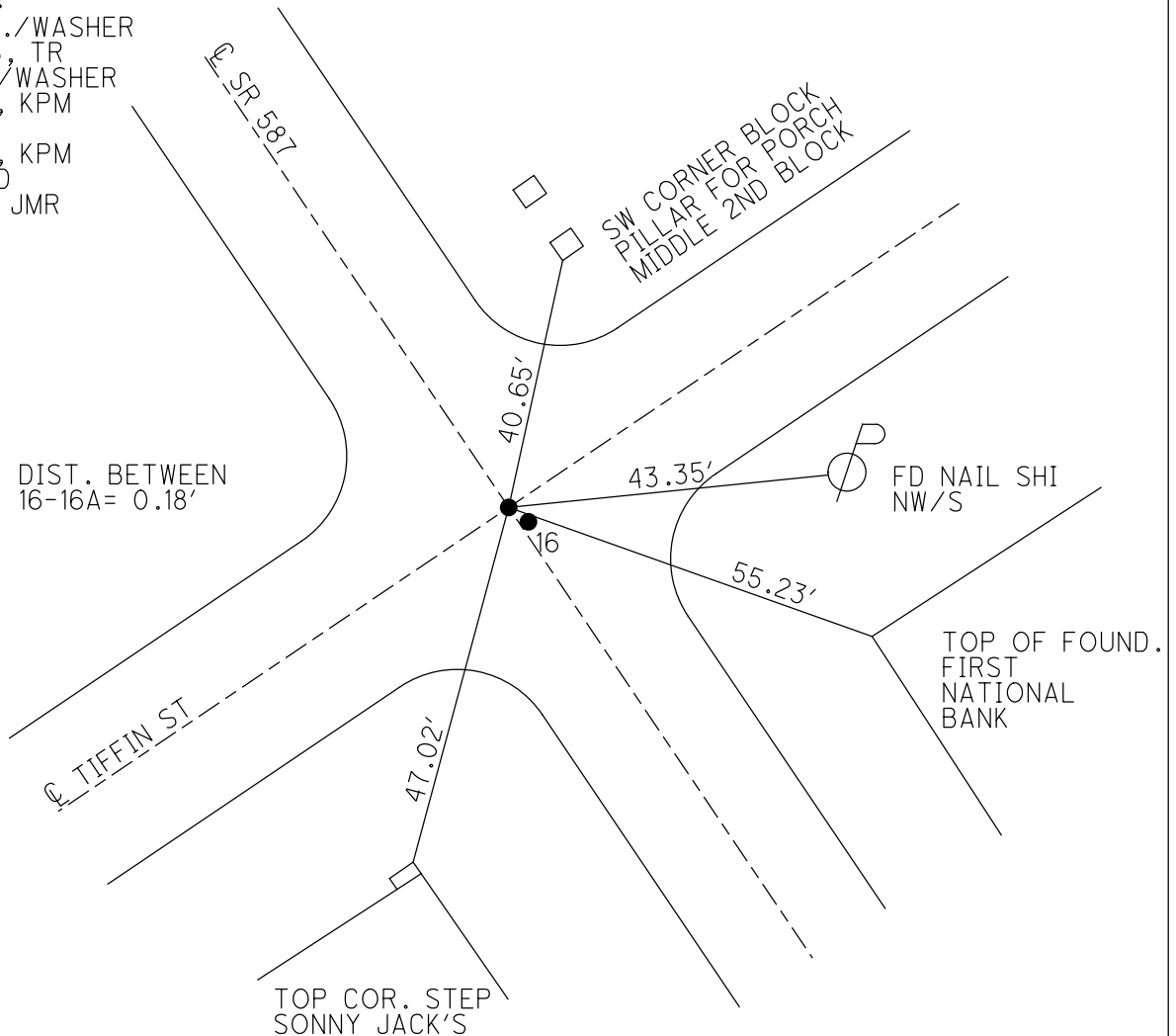
GEOID: _____

GRID: NORTHING: 505581.464

EASTING: 1742831.708



RECORD:
 SET P.K./WASHER
 10/6/98, TR
 FD P.K./WASHER
 5/24/11, KPM
 REB16
 5/26/11, KPM
 COVERED
 7/2/21, JMR



O.D.O.T. DISTRICT 2 SURVEY OFFICE

PERSONNEL _____

REFERENCE NO. 16A

SHEET 19 OF 48

NOTES FINGER _____

DATE 5-24-11

ROUTE SR 587

H.C. MOSER

WEATHER OVERCAST

COUNTY SENECA

R.C. HARBAUGH

TEMP. 75°

TOWNSHIP BIG SPRINGS

SECTION 12

T 1 N R 13 E

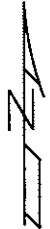
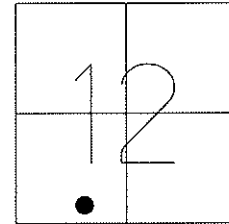
TYPE MONUMENT MAG

ON SURFACE - ~~BELOW~~ ON _____

~~LEFT~~ - Q PAV'T - ~~RIGHT~~ 0.6'

- TO - EDGE PAVEMENT

S.L.M. 260+15.88

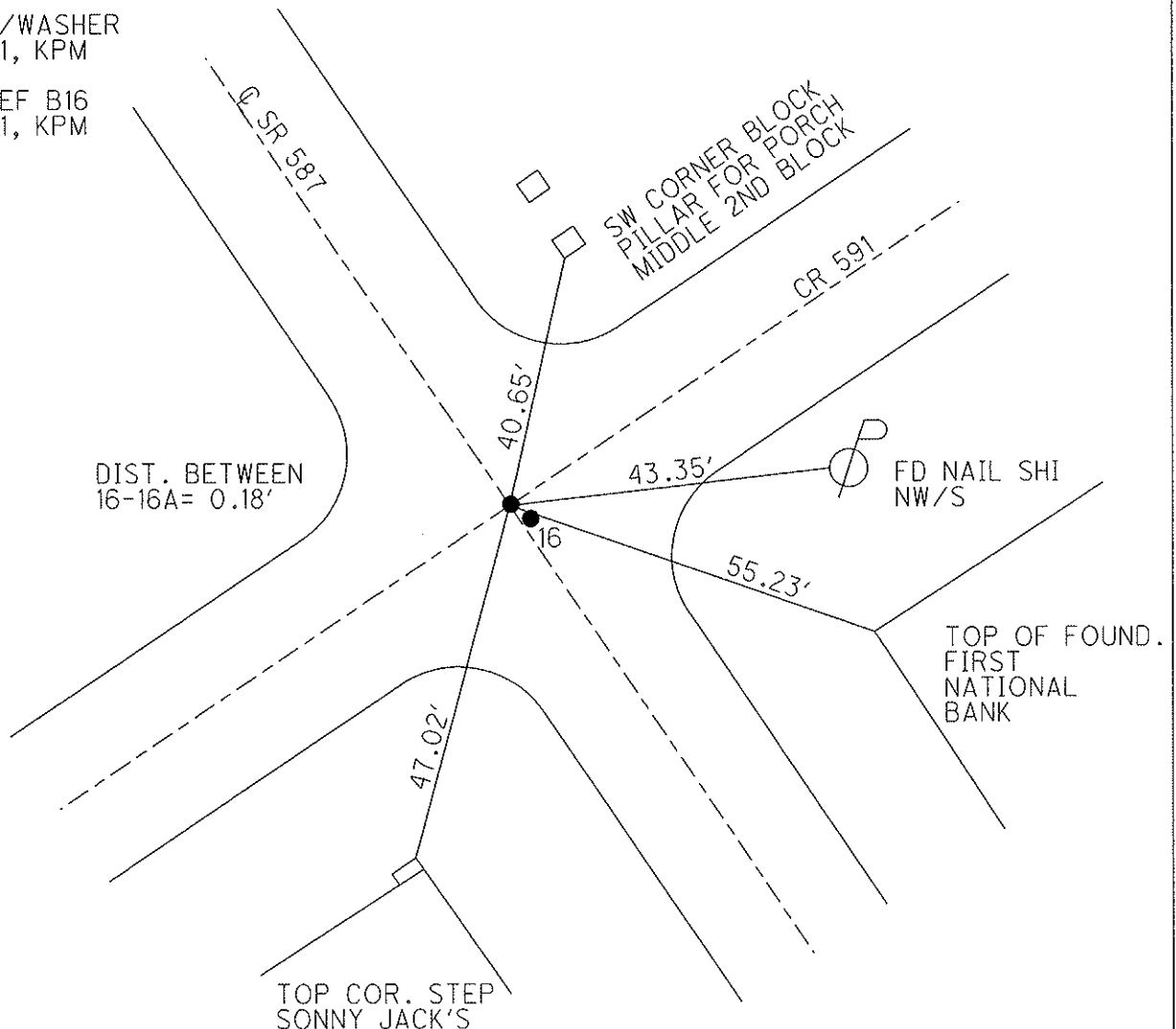


Grid: Northing: 505581.464 Easting: 1742831.708

RESET PK/WASHER
10-6-98, T.R.

FD P.K/WASHER
5/24/11, KPM

GPS, REF B16
5/26/11, KPM



O.D.O.T. DISTRICT 2 SURVEY OFFICE

PERSONNEL

REFERENCE NO. 16

SHEET 17 OF 24

NOTES CANTERBURY

H.C. ROUSOS

DATE 5-5-98

ROUTE 587

R.C. LOEHRKE

WEATHER SUN

COUNTY SENECA

TEMP. +65°F

TOWNSHIP BIG SPRINGS

SECTION 12

T N R E

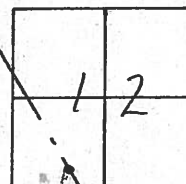
TYPE MONUMENT P.K. WASHER AT RR. SPK.

ON SURFACE - BELOW Surface

~~LEFT~~ & ~~PAN'T.~~ - RIGHT & of Both

TO EDGE PAVEMENT

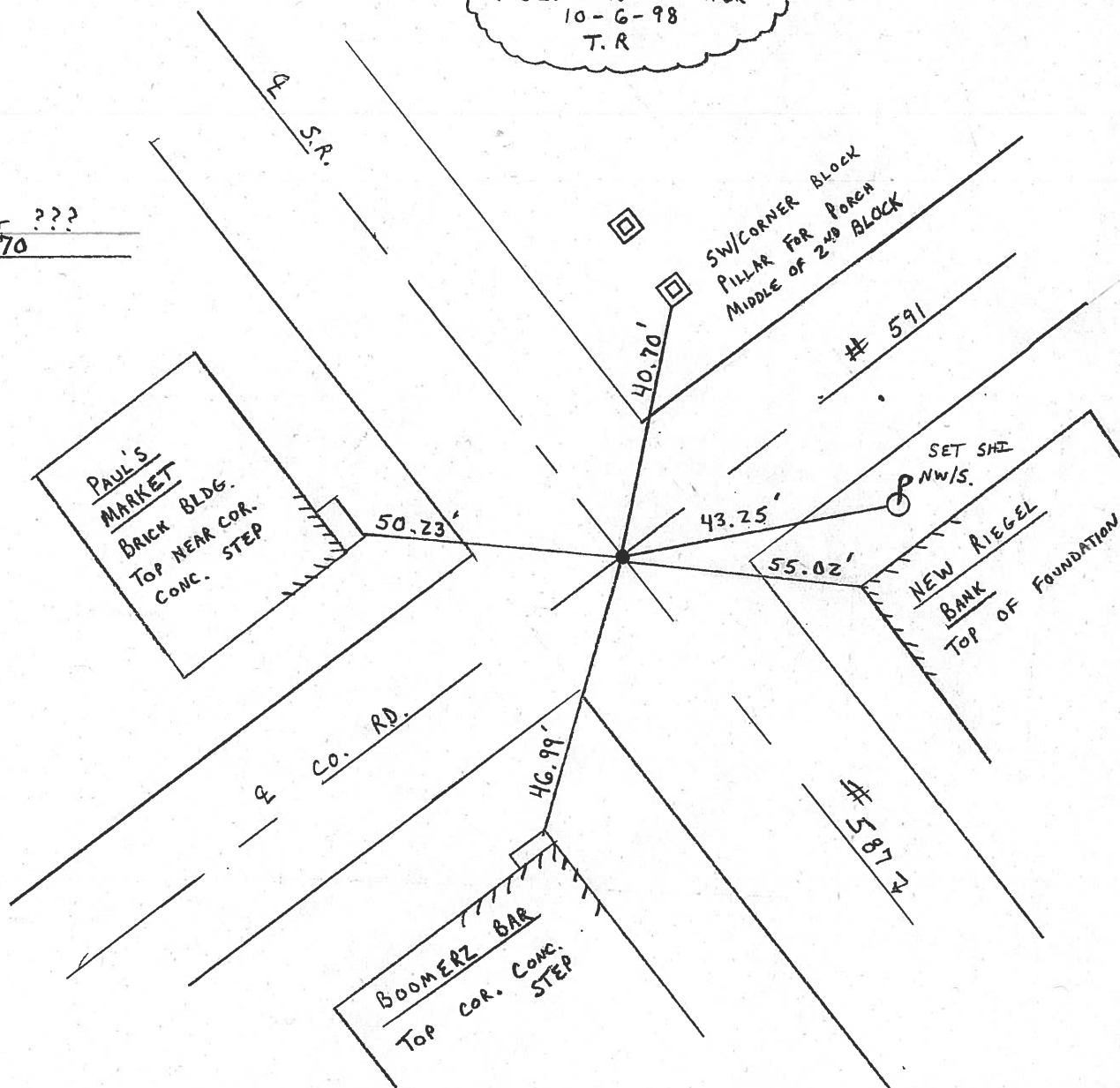
S.L.M.K 7+914.33



S.L.M. = 4.927 ±

RESET PK + WASHER
10-6-98
T.R

RECORD: P.O.T ???
260 + 15.70



O.D.O.T. DISTRICT 2 SURVEY OFFICE

PERSONNEL

REFERENCE NO. 16

SHEET 17 OF

NOTES CRONIN

DRAWN 8/30/85

H.C. RIPPLE

DATE 8/26/85

ROUTE #587

R.C. BARBOUR

WEATHER SUNNY

COUNTY SENECA

GEYMAN

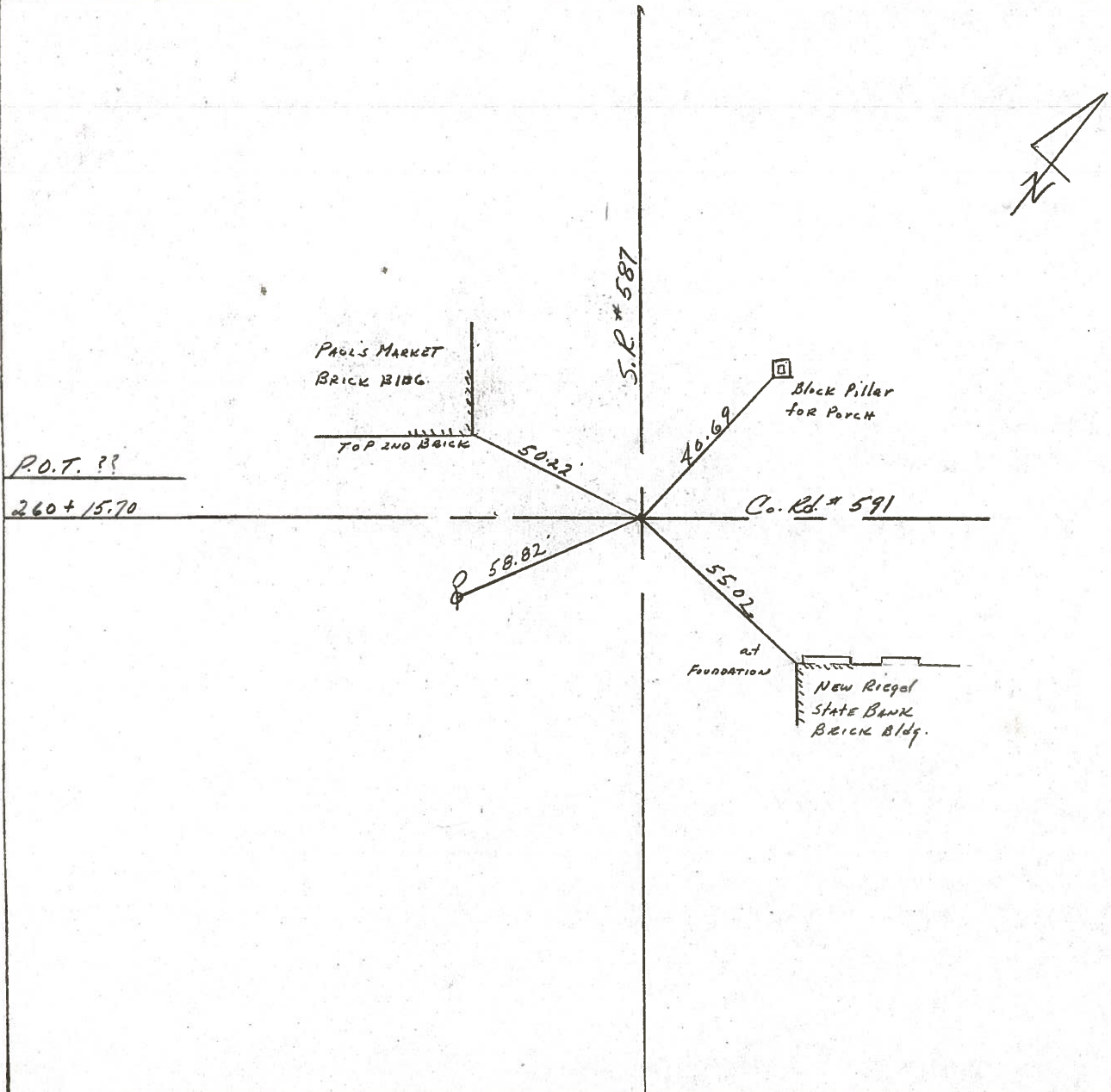
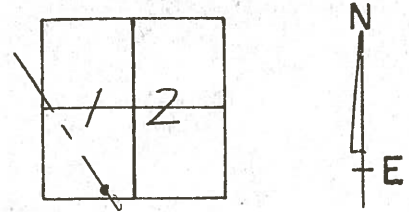
TEMP. 70°

TOWNSHIP BIG SPRINGS

SECTION 12

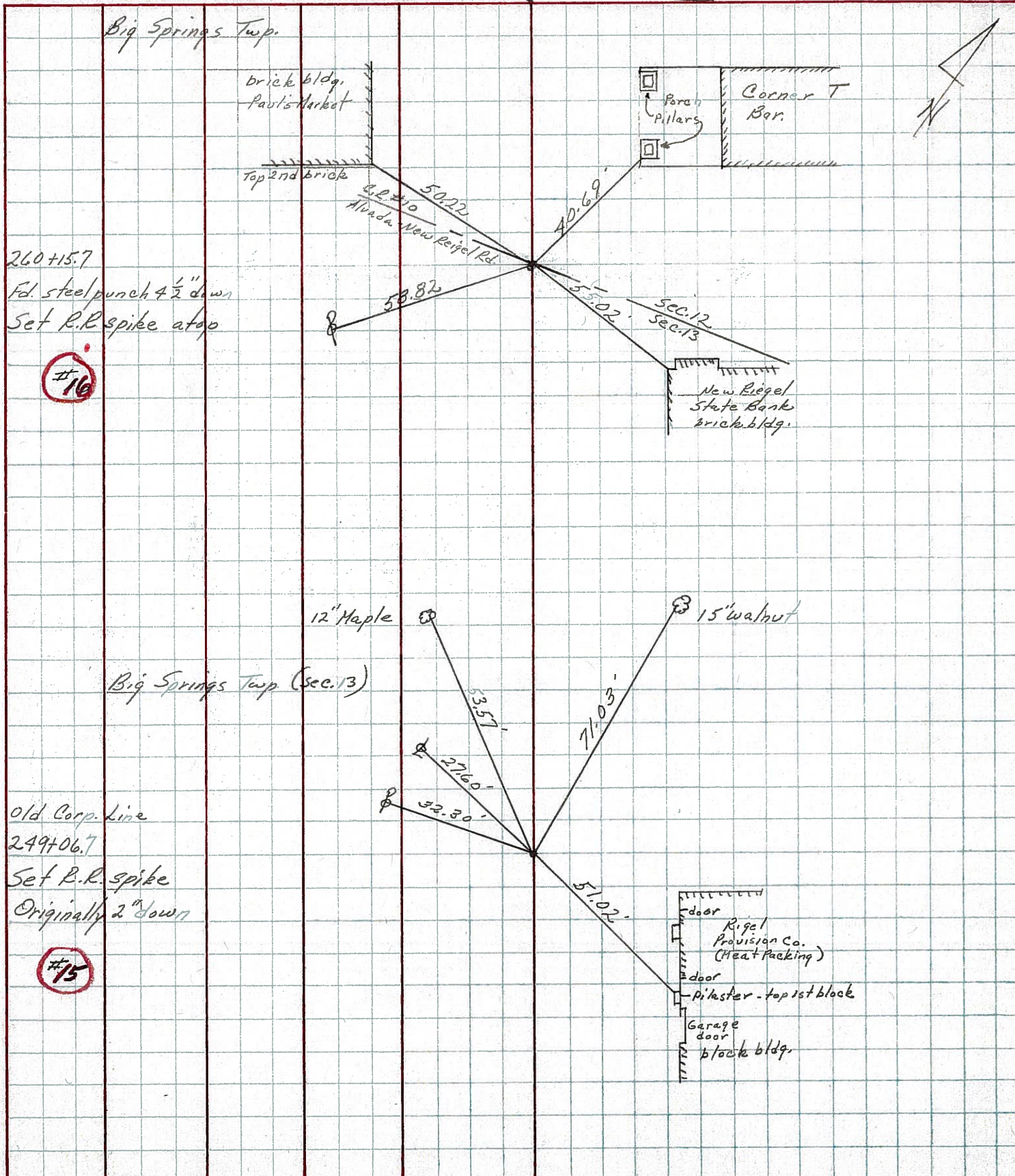
T. 1 N. R. 13 E.

TYPE MONUMENT P.R. WASHER ATOP R.R. SPIK.
 ON SURFACE - BELOW ATOP STEEL PIN ON SURFACE
 LEFT - ℄ PAV'T. - RIGHT ℄ PAUT.
TO EDGE PAVEMENT
 S.L.M. 4.927±



PERSONNEL	TITLE	PERSONNEL	TITLE	COUNTY	DATE	WEATHER	TEMP.
Ash				Seneca	9/28/72	overcast	62°
Cronin				S. R. #587			
Ripple				SEC.			
Anderson							

DESCRIPTION Wyandot-Seneca Co. Line - Northwest
 LEFT CENTER LINE RIGHT JOB NO.

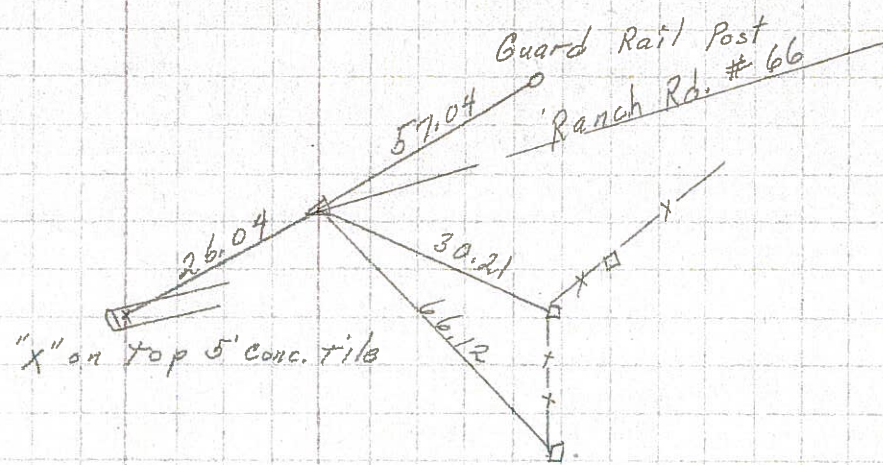


PERSONNEL	TITLE	PERSONNEL	TITLE	COUNTY	DATE
<u>Schnaider</u>				<u>Seneca</u>	<u>11-10-69</u>
<u>Mosser</u>				S. R. <u>587</u>	WEATHER <u>Cloudy</u>
<u>Barbour</u>				SEC. _____	TEMP. <u>40</u>
<u>Potts</u>					

DESCRIPTION Wyandot Co. Line to N. Corp. of New Riegel JOB NO. _____

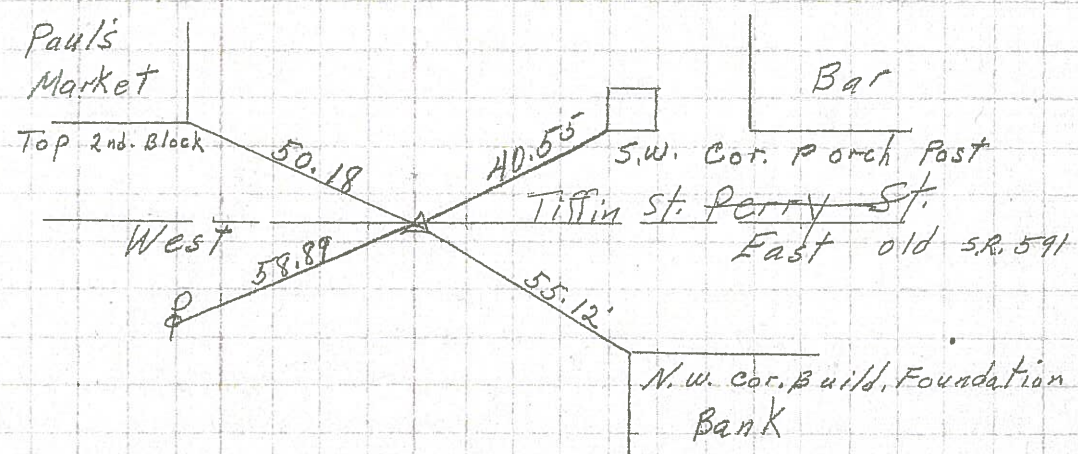
(18) R.R. spk. 1" down between sec 11 & 12

8726



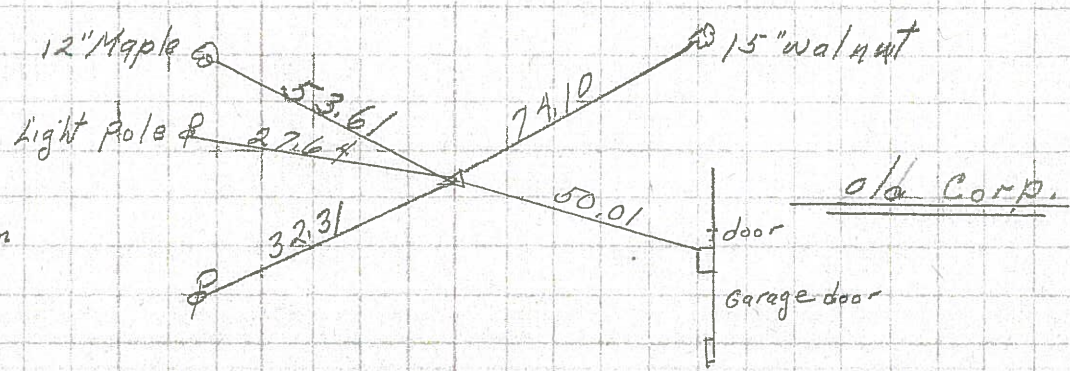
(16) 260+15.7 Fd. R.R. spk. on top

8725



(15) 249+06.7 R.R. spk. 2" down on & R/W

8724



Note: South Corp. Line of New Riegel was moved South to sta. 245+97

(14) 232+35.4 R.R. spk. on & R/W set P.K. Nail on top

8723

