

O.D.O.T. DISTRICT 2 SURVEY OFFICE (USE ONLY)

PERSONNEL

REFERENCE NO. 18

SHEET 21 OF 30

NOTES FINGER

DATE 5/24/11

ROUTE SR 587

H.C. MOSER

WEATHER SUNNY

COUNTY SENECA

R.C. HARBAUGH

TEMP. 75°

TOWNSHIP BIG SPRINGS

DWG BY NIESE

PID PAVE TRAIN

SECTION 12

T 1 N R 13 E

TYPE MONUMENT P.K./WASHER

ON SURFACE - ~~BELOW~~ ON

OFFSET Q PAVEMENT 2.5' LT : ~~RT~~

9.0' TO LT EDGE PAVEMENT

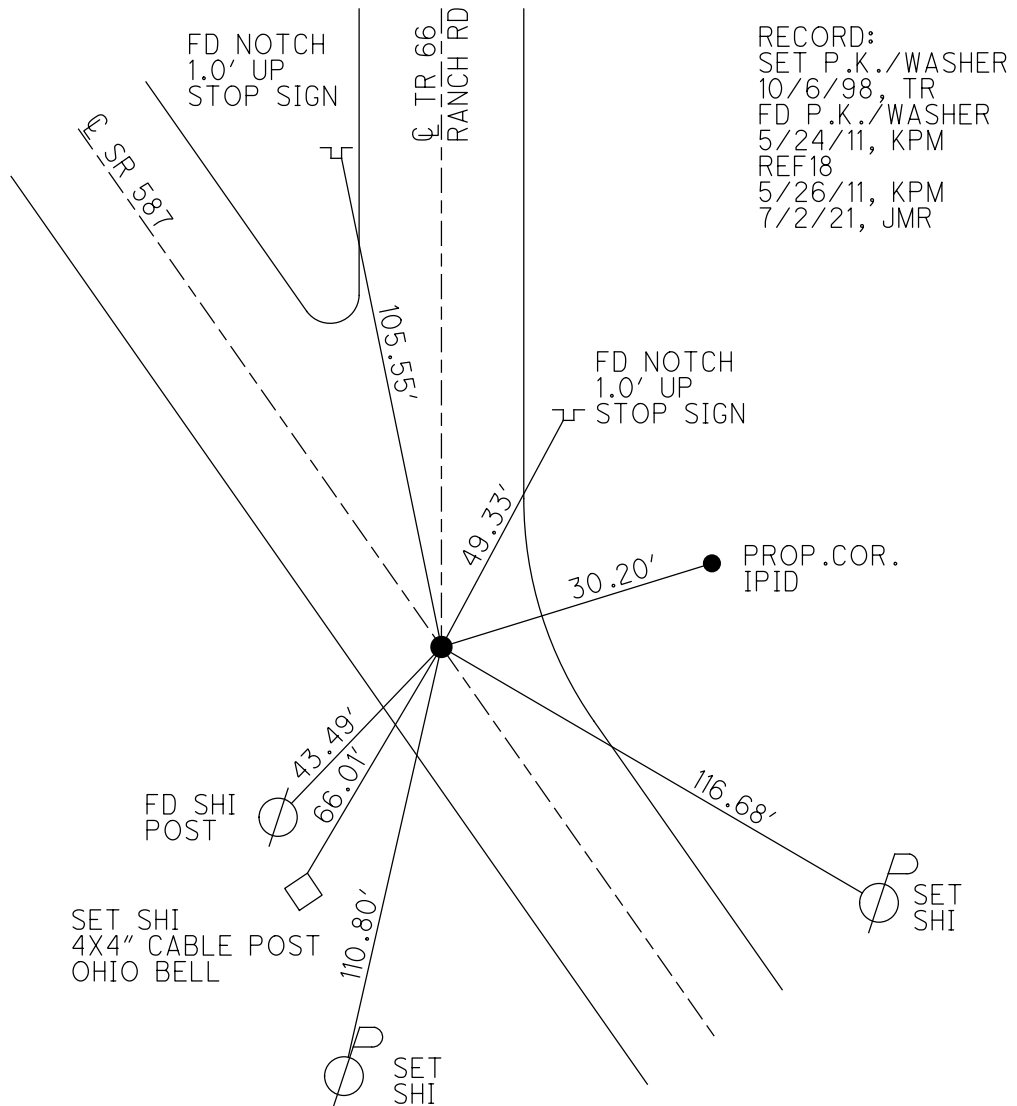
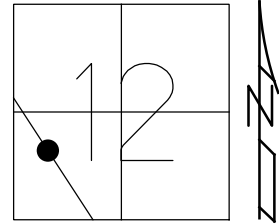
STATION: 290+87

HORIZ.DATUM: NAD83

GEOID: 2009

GRID: NORTHING: 508187.184

EASTING: 1741100.374



O.D.O.T. DISTRICT 2 SURVEY OFFICE (USE ONLY)

PERSONNEL \_\_\_\_\_

REFERENCE NO. 18

SHEET 21 OF 30

NOTES FINGER DATE 5/24/11

H.C. MOSER WEATHER SUNNY

R.C. HARBAUGH TEMP. 75°

ROUTE SR 587

COUNTY SENECA

TOWNSHIP BIG SPRINGS

SECTION 12

DWG BY NIESE PID PAVE TRAIN

T 1 N R 13 E

TYPE MONUMENT P.K./WASHER

ON SURFACE - ~~BELOW~~ ON

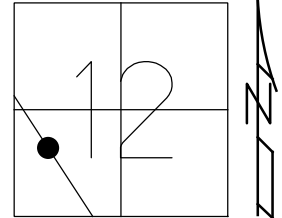
OFFSET 9.0'  $\text{\textcircled{C}}$  PAVEMENT 2.5' LT : ~~RT~~

9.0' TO LT EDGE PAVEMENT

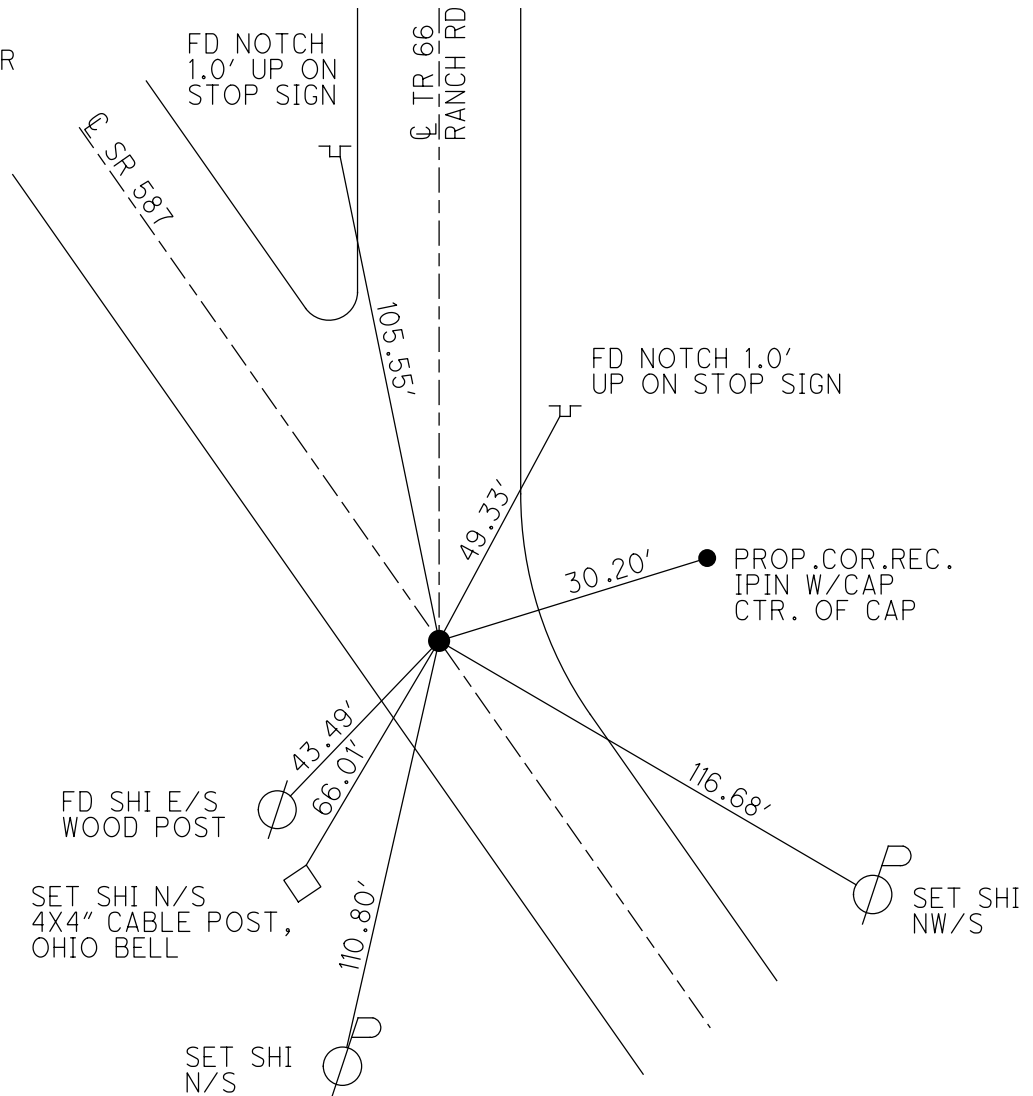
STATION: 290+87

HORIZ.DATUM: \_\_\_\_\_ GEOID: \_\_\_\_\_

GRID: NORTHING: 508187.184 EASTING: 1741100.374



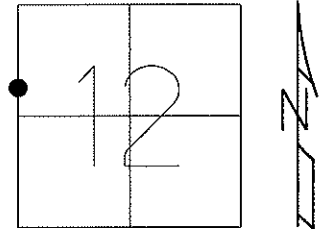
RECORD:  
SET P.K./WASHER  
10/6/98, TR  
FD P.K./WASHER  
5/24/11, KPM  
REF18  
5/26/11, KPM  
7/2/21, JMR



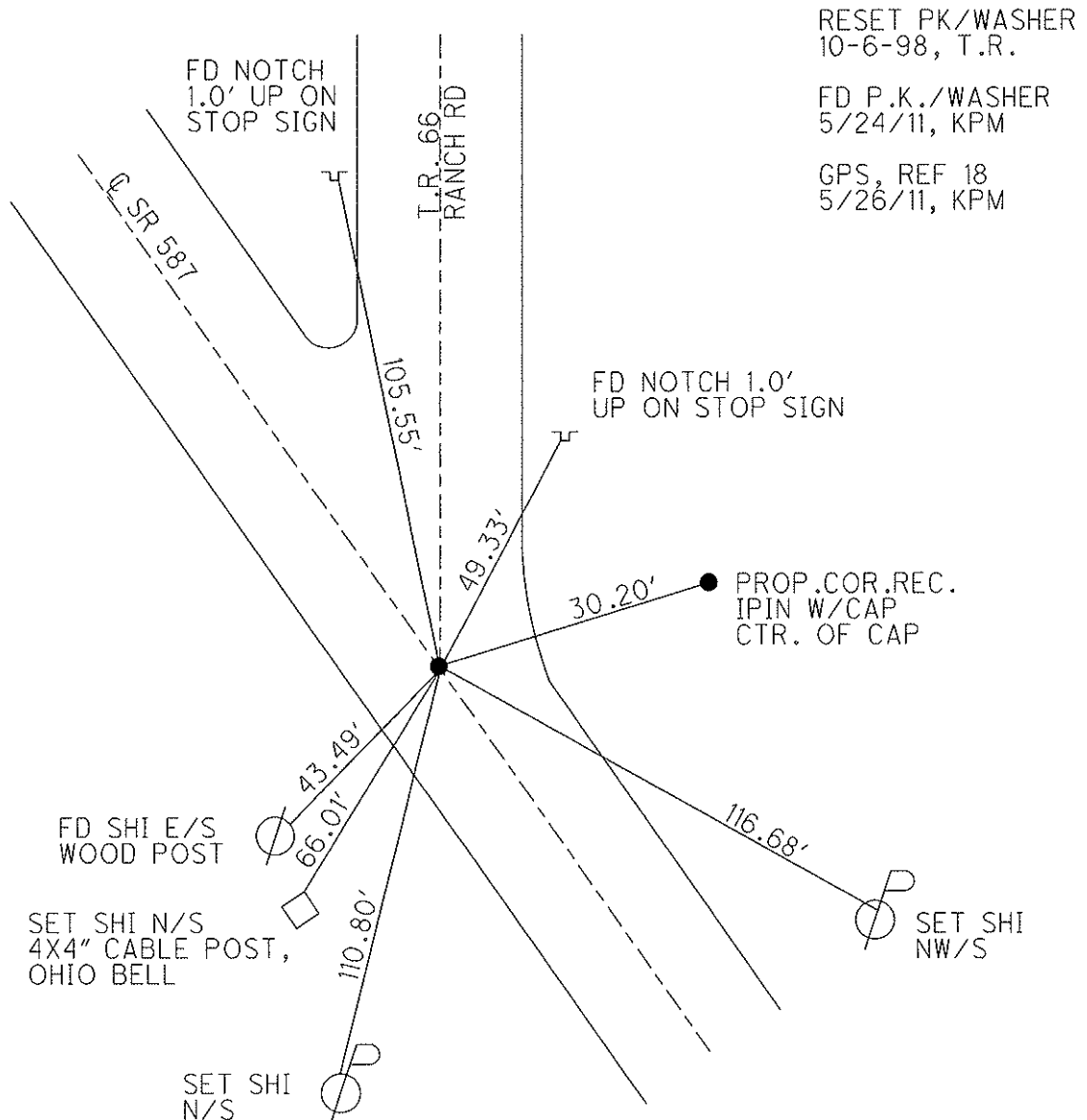
O.D.O.T. DISTRICT 2 SURVEY OFFICE

|                      |                         |                              |
|----------------------|-------------------------|------------------------------|
| PERSONNEL            | REFERENCE NO. <u>18</u> | SHEET <u>21</u> OF <u>30</u> |
| NOTES FINGER         | DATE <u>5-24-11</u>     | ROUTE <u>SR 587</u>          |
| H.C. <u>MOSER</u>    | WEATHER <u>SUNNY</u>    | COUNTY <u>SENECA</u>         |
| R.C. <u>HARBAUGH</u> | TEMP. <u>75°</u>        | TOWNSHIP <u>BIG SPRINGS</u>  |
|                      |                         | SECTION <u>12</u>            |
|                      |                         | T <u>1</u> N R <u>13</u> E   |

TYPE MONUMENT PK/WASHER  
 ON SURFACE - ~~BELOW~~ ON  
 LEFT - ~~C PAV'T~~ - RIGHT 2.5'  
9.0' TO LT. EDGE PAVEMENT  
 S.L.M. 290+87



Grid: Northing: 508187.184 Easting: 1741100.374



RESET PK/WASHER  
10-6-98, T.R.

FD P.K./WASHER  
5/24/11, KPM

GPS, REF 18  
5/26/11, KPM

# O.D.O.T. DISTRICT 2 SURVEY OFFICE

PERSONNEL

REFERENCE NO. 18

SHEET 19 OF 24

NOTES CANTERBURY

H.G. ROUSOS

R.C. LOEHRKE

DATE 5-5-98

WEATHER SUN

TEMP. +65°F

ROUTE #587

COUNTY SENECA

TOWNSHIP BIG SPRINGS

SECTION 12

T.L.N.R. 13 E

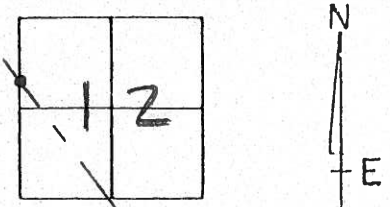
TYPE MONUMENT P.K. WASHER ATOP R.R. SPIK

ON SURFACE - ~~BELOW~~ ON SURFACE

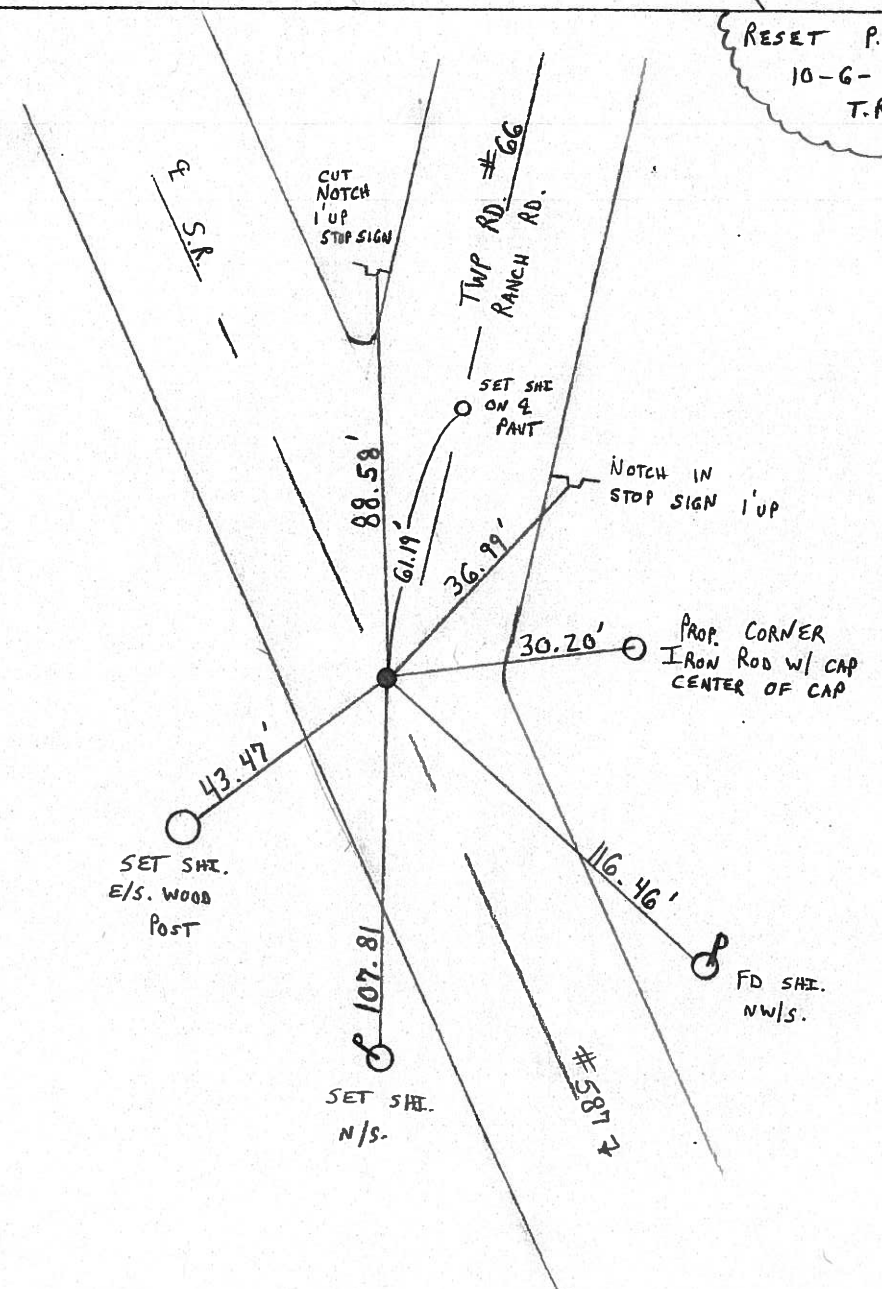
LEFT - ~~C~~ PAW'T. - ~~RIGHT~~ Z' LT & PAWT

9.0' TO LT EDGE PAVEMENT

S.L. ~~M~~ K = 8+865.85



RESET P.K. / WASHER  
 10-6-98  
 T.R.



# O.D.O.T. DISTRICT 2 SURVEY OFFICE

PERSONNEL

REFERENCE NO. 18

SHEET 19 OF \_\_\_\_\_

NOTES CROWIN

DRAWN 8/30/85

H.C. RIPPLE

DATE 8/26/85

ROUTE # 587

R.C. BARBOUR

WEATHER SUNNY

COUNTY SENECA

GEYMAN

TEMP. 73°

TOWNSHIP BIG SPRINGS

SECTION \_\_\_\_\_

T 1 N R 13 E

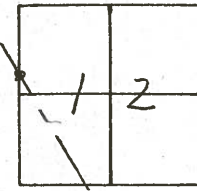
TYPE MONUMENT P.K. & WASHER AT OP R.R. SPIKE

ON SURFACE - BELOW ON SURFACE

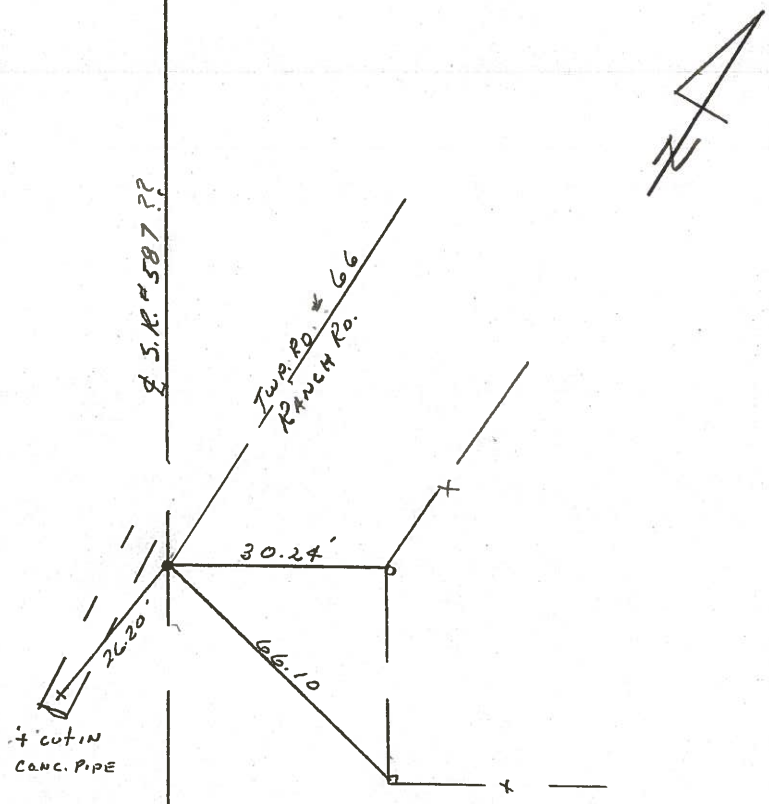
LEFT - Q. PAV'T. - RIGHT 2' LT. & PAV'T.

TO EDGE PAVEMENT

S.L.M. \_\_\_\_\_



CHECK TO SEE IF  
POINT IS ON LINE





| PERSONNEL | TITLE | PERSONNEL | TITLE |
|-----------|-------|-----------|-------|
| Ash       |       |           |       |
| Cronin    |       |           |       |
| Ripple    |       |           |       |
| Anderson  |       |           |       |

COUNTY Seneca

DATE 9/28/72

S. R. #587

WEATHER overcast

SEC.

TEMP. 62°

DESCRIPTION Wyandot-Seneca Co Line - Northwest

JOB NO.

LEFT

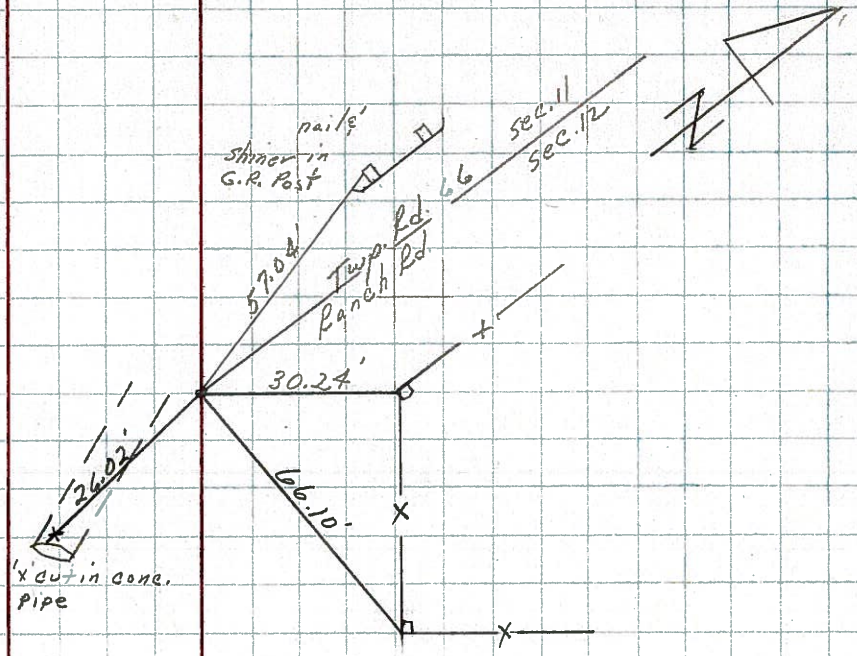
CENTER LINE

RIGHT

Big Springs Twp.

Set R.R. spike  
Originally 1" down

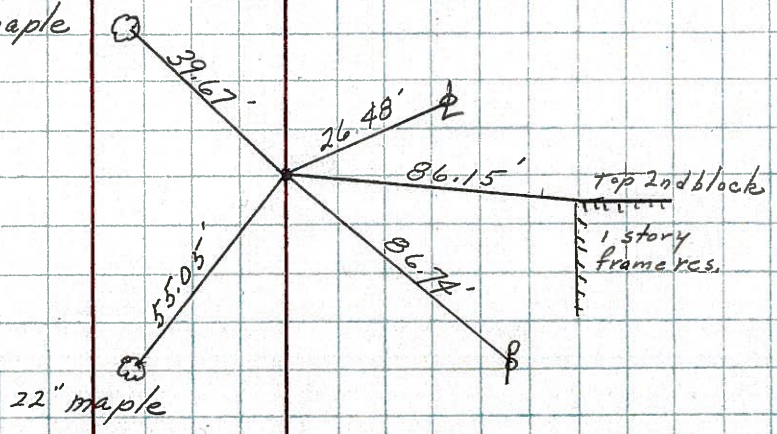
#78



Big Springs Twp (Sec. 12)  
20" maple

276+37 ± S.L.M.  
Fd. I. Pin 5 1/2" down  
Set R.R. spike atop  
May or may not be on  
S.R. #587

#77





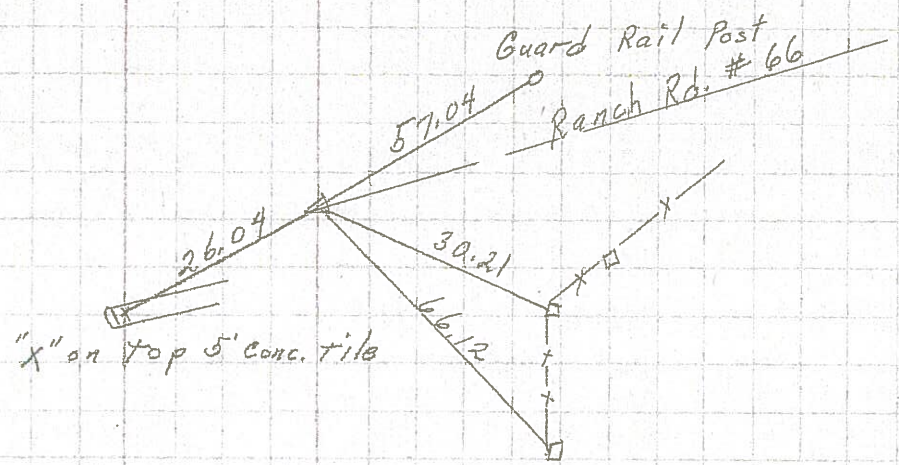
| PERSONNEL | TITLE | PERSONNEL | TITLE | COUNTY    | DATE           |
|-----------|-------|-----------|-------|-----------|----------------|
| Schneider |       |           |       | Seneca    | 11-10-69       |
| Mosser    |       |           |       | S. R. 587 | WEATHER Cloudy |
| Barbour   |       |           |       | SEC.      | TEMP. 40       |
| Potts     |       |           |       |           |                |

DESCRIPTION Wyandot Co. Line to N. corp. of New Riegel JOB NO. \_\_\_\_\_

18

R.R. spk. 1" down between sec 11 & 13

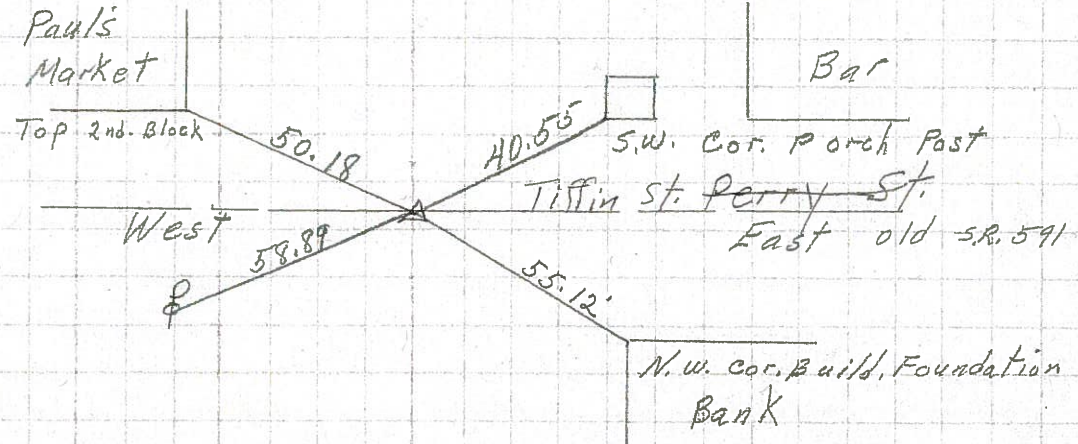
8726



16

260+15.7 Fd. R.R. spk. on top

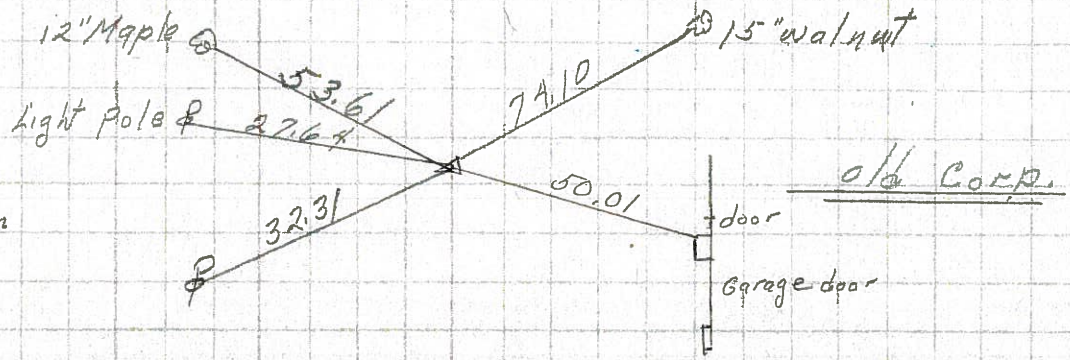
8725



15

249+06.7 R.R. spk. 2" down on & R/W

8724



14

Note: South Corp. Line of New Riegel was moved South to sta. 245+97  
 232+35.4 R.R. spk. on & R/W set P.K. Nail on top

8723

