

O.D.O.T. DISTRICT 2 SURVEY OFFICE (USE ONLY)

PERSONNEL

REFERENCE NO. 19

SHEET 22 OF 30

NOTES FINGER
 H.C. MOSE
 R.C. HARBAUGH

DATE 5/24/11
 WEATHER SUNNY
 TEMP. 75°

ROUTE SR 587
 COUNTY SENECA
 TOWNSHIP BIG SPRINGS
 SECTION 11
 T 1 N R 13 E

DWG BY NIESE PID PAVE TRAIN

TYPE MONUMENT P.K. SHANK

ON SURFACE - ~~BELOW~~ ON

OFFSET C PAVEMENT ON LT : RT
11.0' TO RT EDGE PAVEMENT

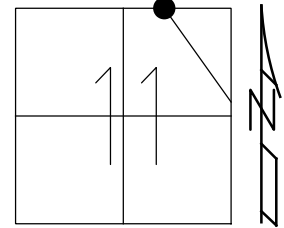
STATION: 320+03

HORZ.DATUM: NAD83

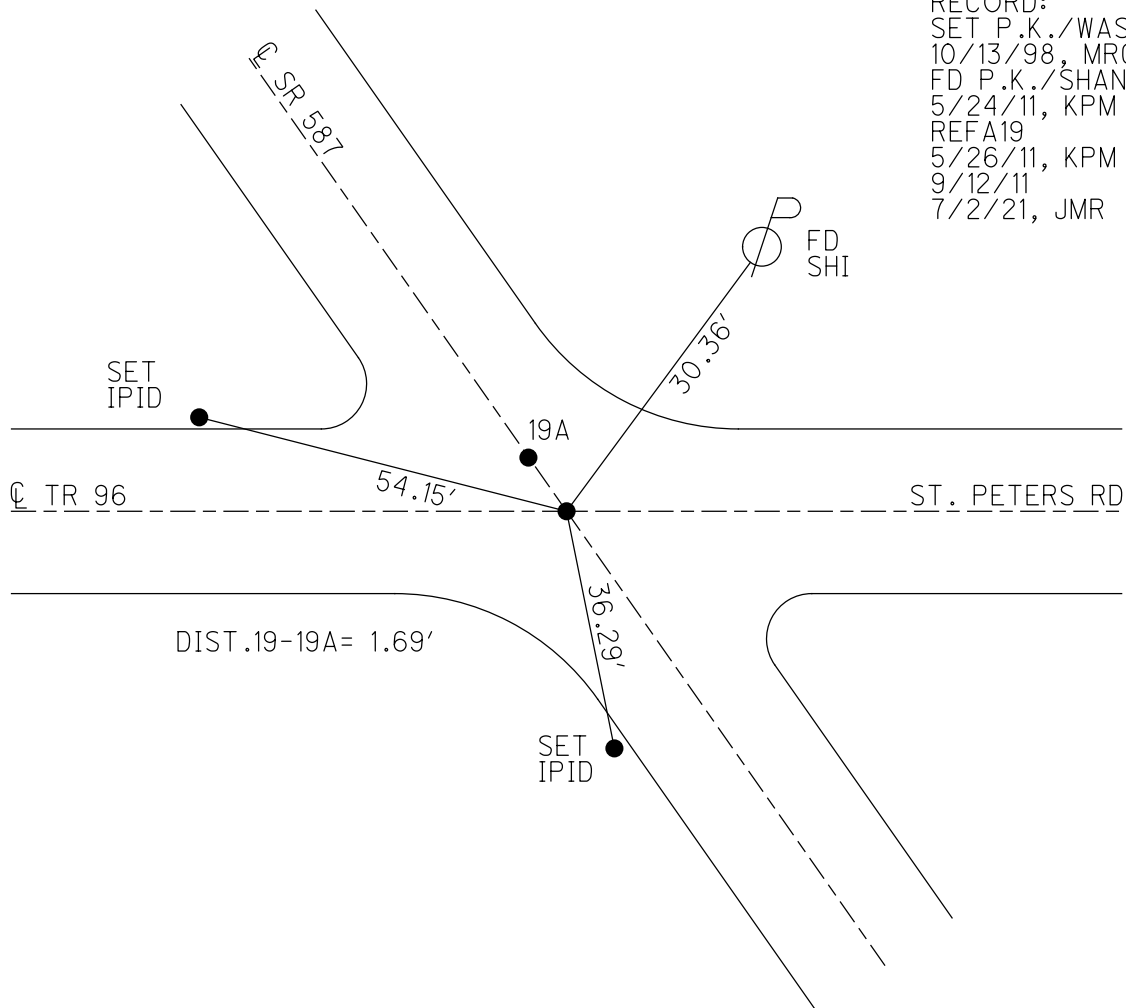
GEOID: 2009

GRID: NORTHING: 510621.505

EASTING: 1739496.298



RECORD:
 SET P.K./WASHER
 10/13/98, MRC
 FD P.K./SHANK
 5/24/11, KPM
 REFA19
 5/26/11, KPM
 9/12/11
 7/2/21, JMR



O.D.O.T. DISTRICT 2 SURVEY OFFICE (USE ONLY)

PERSONNEL

REFERENCE NO. 19

SHEET 22 OF 30

NOTES FINGER

DATE 5/24/11

ROUTE SR 587

H.C. MOSER

WEATHER SUNNY

COUNTY SENECA

R.C. HARBAUGH

TEMP. 75°

TOWNSHIP BIG SPRINGS

DWG BY NIESE

PID PAVE TRAIN

SECTION 11

T 1 N R 13 E

TYPE MONUMENT P.K. SHANK

ON SURFACE - ~~BELOW~~ ON

OFFSET CL PAVEMENT ON LT : RT

11.0' TO RT EDGE PAVEMENT

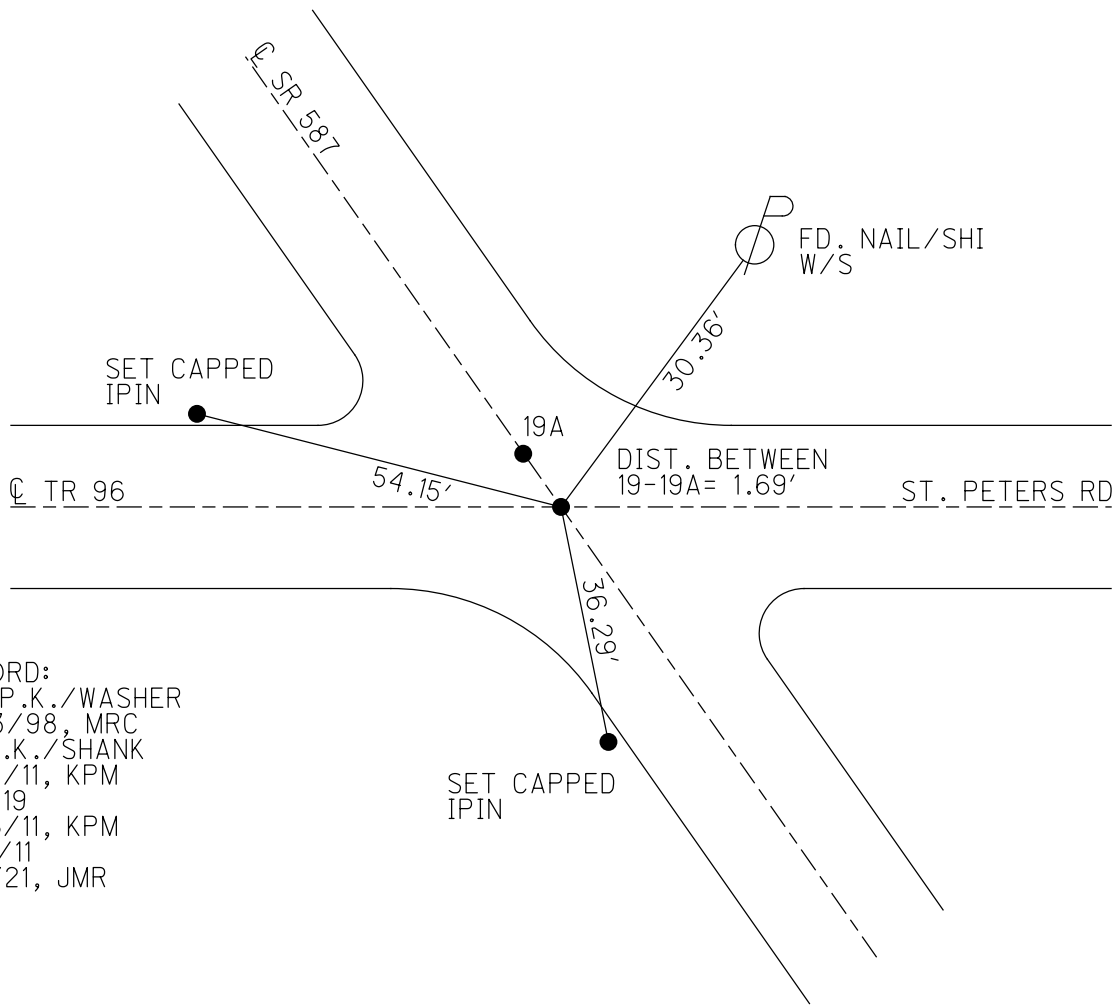
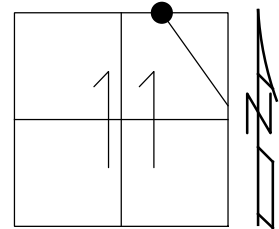
STATION: 320+03

HORZ.DATUM: _____

GEOID: _____

GRID: NORTHING: 510621.505

EASTING: 1739496.298

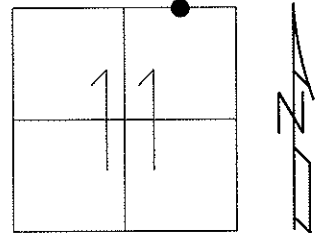


RECORD:
 SET P.K./WASHER
 10/13/98, MRC
 FD P.K./SHANK
 5/24/11, KPM
 REFA19
 5/26/11, KPM
 9/12/11
 7/2/21, JMR

O.D.O.T. DISTRICT 2 SURVEY OFFICE

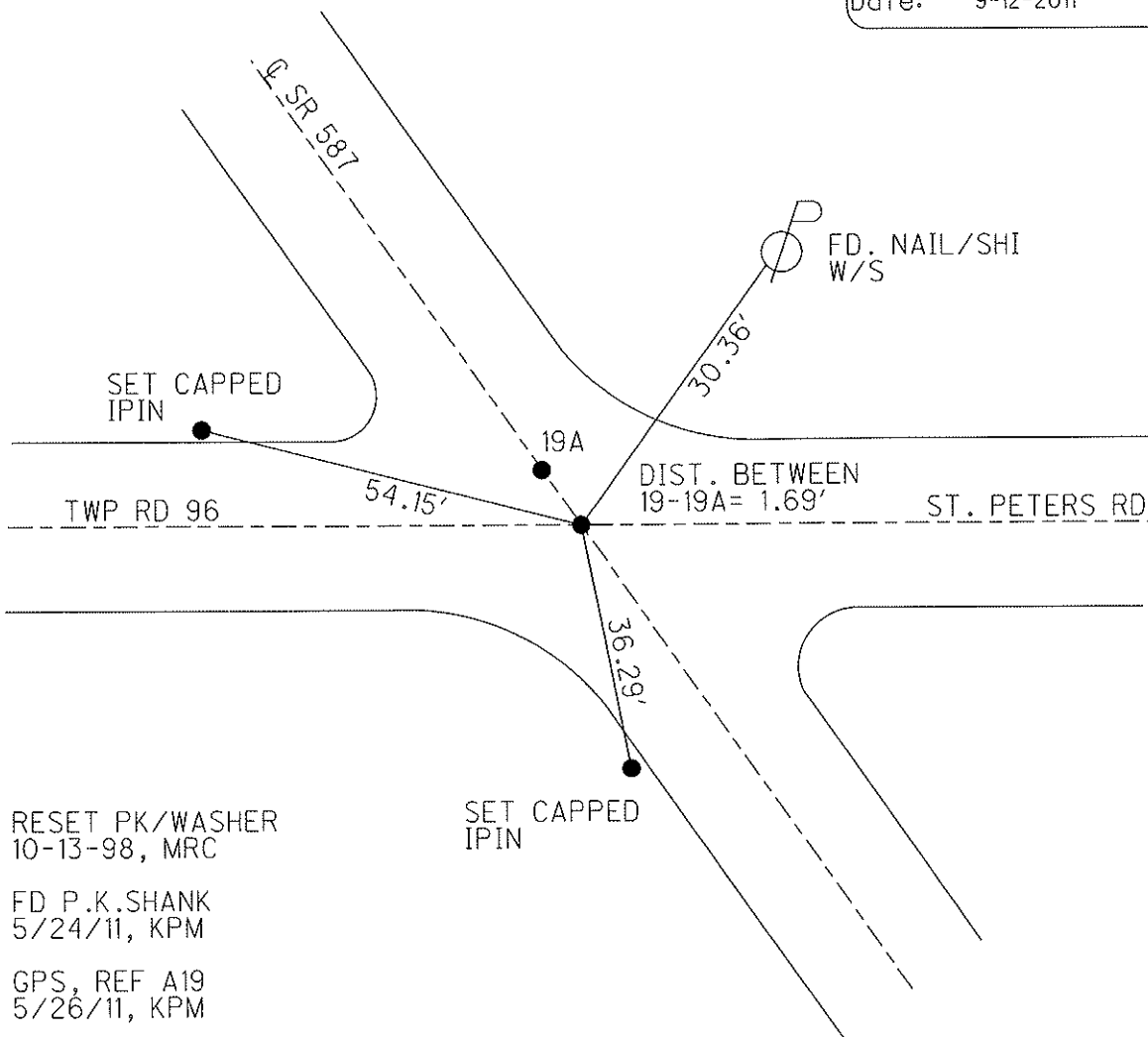
PERSONNEL _____ REFERENCE NO. 19 SHEET 22 OF 30
 NOTES FINGER _____ DATE 5-24-11 ROUTE SR 587
 H.C. MOSER _____ WEATHER SUNNY COUNTY SENECA
 R.C. HARBAUGH _____ TEMP. 75° TOWNSHIP BIG SPRINGS
 _____ SECTION 11
 _____ T 1 N R 13 E

TYPE MONUMENT P.K.SHANK
 ON SURFACE - ~~BELOW~~ ON _____
 LEFT - Q PAV'T - RIGHT ON _____
11.0' TO RT. EDGE PAVEMENT
 S.L.M. 320+03



Grid: Northing: 510621.505 Easting: 1739496.298

Preventative Maintenance
 Chip & Seal
 Existing Point Uncovered
 Date: 9-12-2011



RESET PK/WASHER
 10-13-98, MRC
 FD P.K.SHANK
 5/24/11, KPM
 GPS, REF A19
 5/26/11, KPM

O.D.O.T. DISTRICT 2 SURVEY OFFICE

PERSONNEL

REFERENCE NO. 19 SHEET 20 OF 24

NOTES CANTERBURY

H.C. Rousos

R.C. LOEHRKE

DATE 5-5-98

WEATHER SUN

TEMP. +65° F

ROUTE #587

COUNTY SENECA

TOWNSHIP BIG SPRINGS

SECTION 11

T 1 N R 13 E

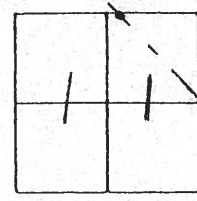
TYPE MONUMENT P.K. & WASHER ATOP R.R. SPK.

ON SURFACE - BELOW ON SURFACE

~~LEFT - & PAVT.~~ - ~~RIGHT~~ ON &

TO EDGE PAVEMENT

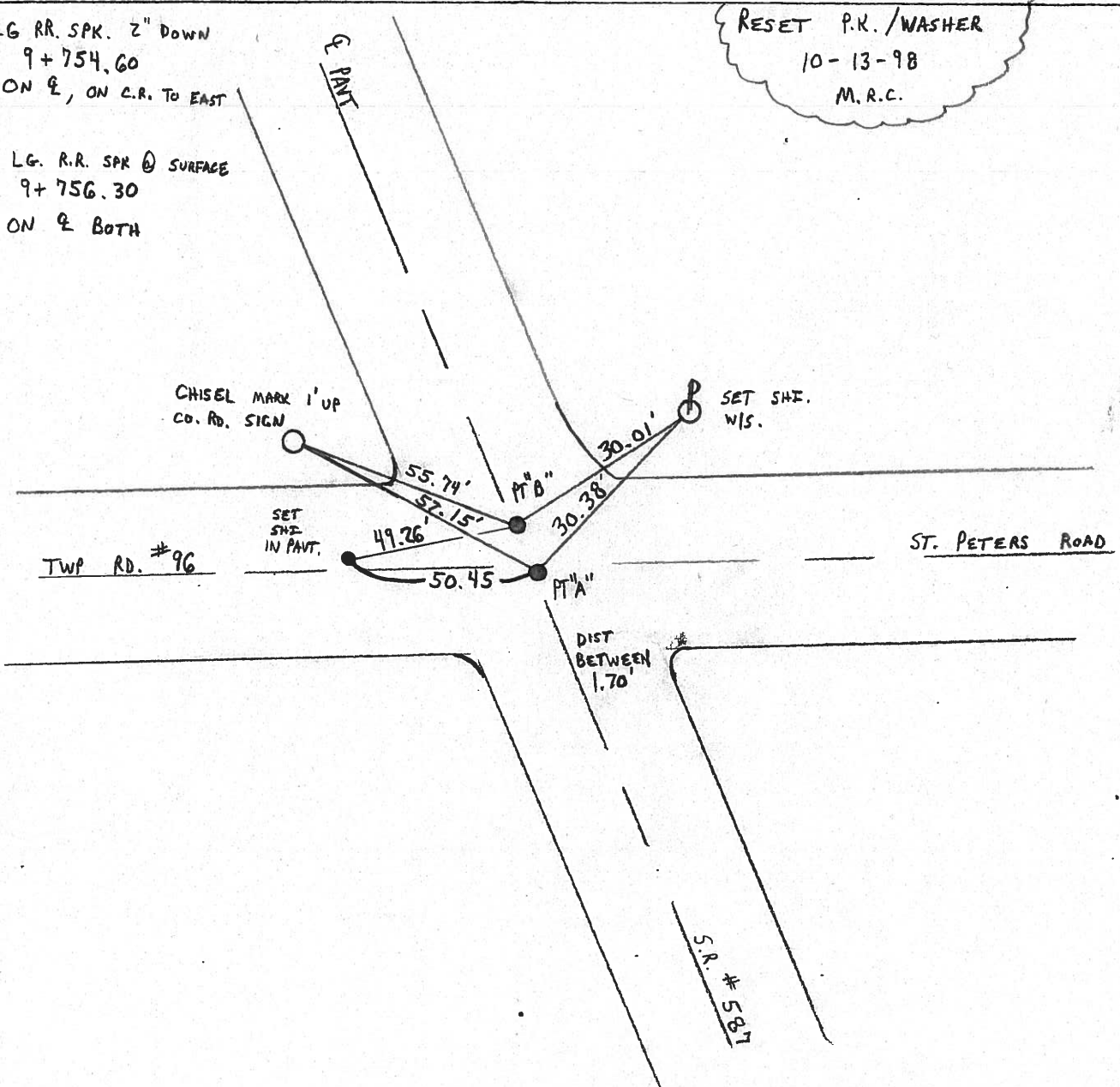
S.L.M. PTA = 9+754.60 PT B = 9+756.3



PT A = LG RR. SPK. 2" DOWN
STA = 9+754.60
ON &, ON C.R. TO EAST

PT B = LG. R.R. SPK @ SURFACE
STA 9+756.30
ON & BOTH

RESET P.K./WASHER
10-13-98
M.R.C.



O.D.O.T. DISTRICT 2 SURVEY OFFICE

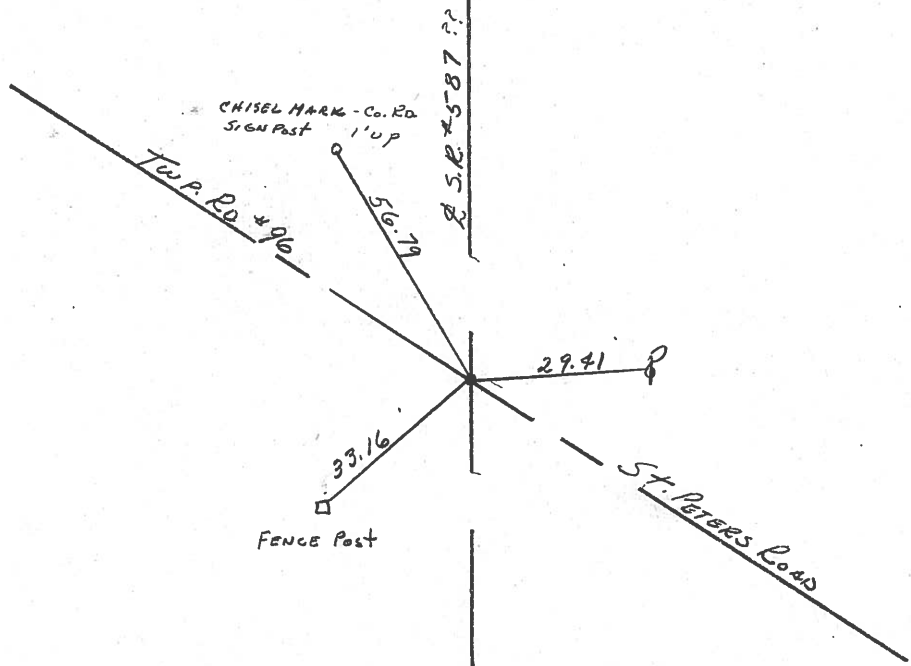
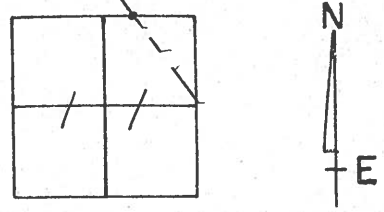
PERSONNEL

NOTES CRONIN
 H.C. RIPPLE
 R.C. BARBOUR
GEYMAN

REFERENCE NO. 19
 DRAWN 9/3/85
 DATE 8/26/85
 WEATHER SUNNY
 TEMP. 73°

SHEET 20 OF _____
 ROUTE #587
 COUNTY SENECA
 TOWNSHIP BIG SPRINGS
 SECTION 11
 T 1 N R 13 E

TYPE MONUMENT P.K. & Washer atop R.R. Spike
 ON SURFACE - BELOW ON SURFACE
 LEFT - & PAW'T. - RIGHT & PAW'T.
 TO _____ EDGE PAVEMENT
 S.L.M. _____



PERSONNEL	TITLE	PERSONNEL	TITLE
<u>Ash</u>			
<u>Cronin</u>			
<u>Ripple</u>			
<u>Anderson</u>			

COUNTY Seneca DATE 10/2/72
 S. R. # 587 WEATHER sunny
 SEC. _____ TEMP. 53°

DESCRIPTION Wyandot-Seneca Co. Line - Northwest JOB NO. _____

