

O.D.O.T. DISTRICT 2 SURVEY OFFICE (USE ONLY)

PERSONNEL

REFERENCE NO. 19 A

SHEET 23 OF 30

NOTES FINGER

DATE 5/24/11

ROUTE SR 587

H.C. MOSER

WEATHER SUNNY

COUNTY SENECA

R.C. HARBAUGH

TEMP. 75°

TOWNSHIP BIG SPRINGS

SECTION 11

DWG BY NIESE

PID PAVE TRAIN

T 1 N R 13 E

TYPE MONUMENT P.K./WASHER

ON SURFACE - ~~BELOW~~ ON

OFFSET Q PAVEMENT ON LT : RT

11.0' TO RT EDGE PAVEMENT

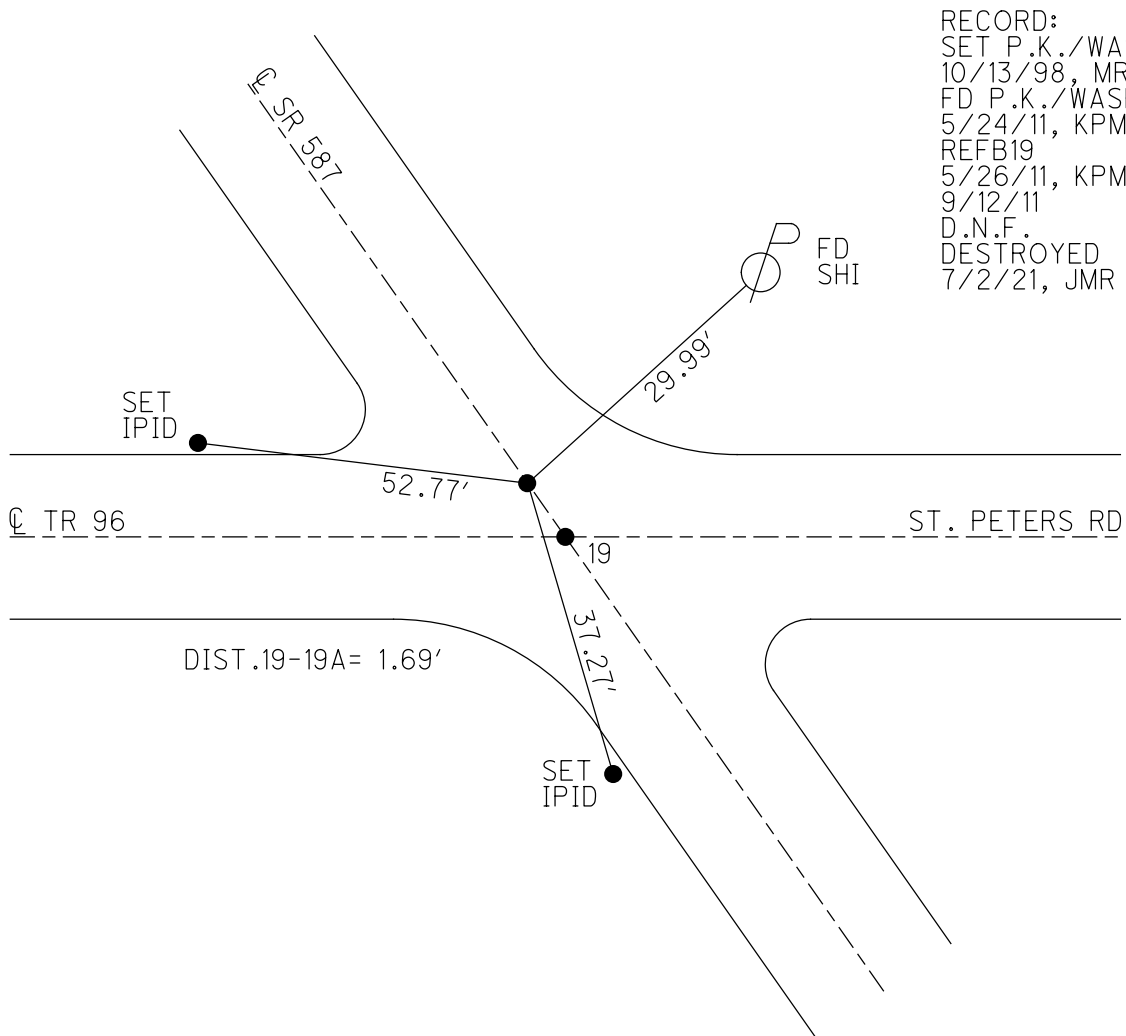
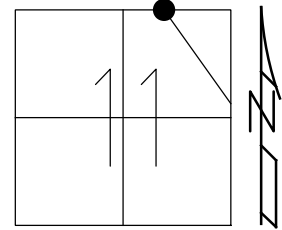
STATION: 320+04.69

HORZ.DATUM: NAD83

GEOID: 2009

GRID: NORTHING: 510622.915

EASTING: 1739495.376



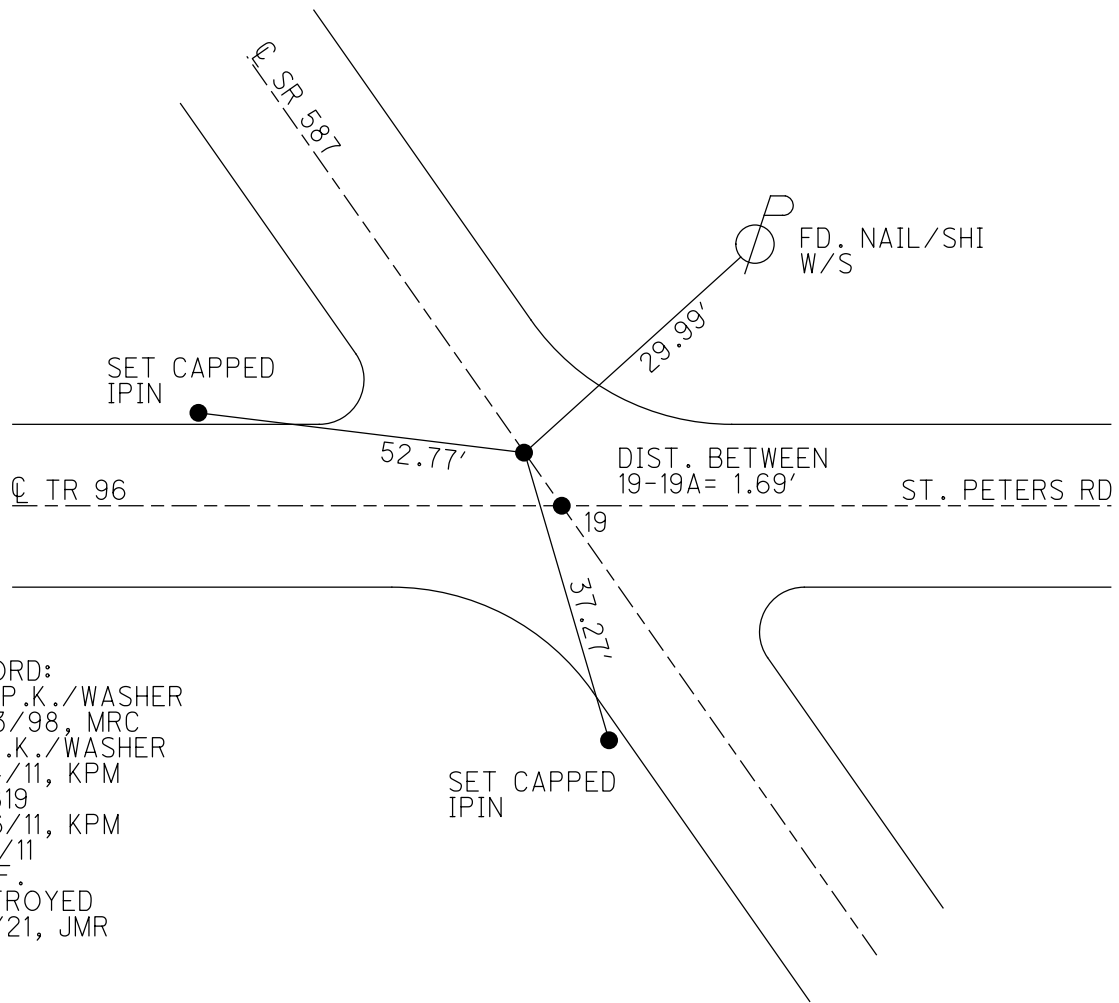
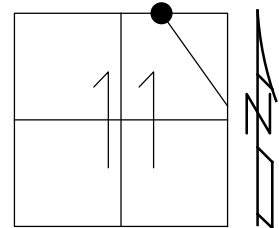
RECORD:  
 SET P.K./WASHER  
 10/13/98, MRC  
 FD P.K./WASHER  
 5/24/11, KPM  
 REFB19  
 5/26/11, KPM  
 9/12/11  
 D.N.F.  
 DESTROYED  
 7/2/21, JMR

O.D.O.T. DISTRICT 2 SURVEY OFFICE (USE ONLY)

PERSONNEL \_\_\_\_\_ REFERENCE NO. 19 A SHEET 23 OF 30  
 NOTES FINGER DATE 5/24/11 ROUTE SR 587  
 H.C. MOSER WEATHER SUNNY COUNTY SENECA  
 R.C. HARBAUGH TEMP. 75° TOWNSHIP BIG SPRINGS  
 DWG BY NIESE PID PAVE TRAIN SECTION 11  
 T 1 N R 13 E

TYPE MONUMENT P.K./WASHER  
 ON SURFACE - ~~BELOW~~ ON  
 OFFSET Q PAVEMENT ON LT : RT  
11.0' TO RT EDGE PAVEMENT  
 STATION: 320+04.69

HORZ.DATUM: \_\_\_\_\_ GEOID: \_\_\_\_\_  
 GRID: NORTHING: 510622.915 EASTING: 1739495.376



RECORD:  
 SET P.K./WASHER  
 10/13/98, MRC  
 FD P.K./WASHER  
 5/24/11, KPM  
 REFB19  
 5/26/11, KPM  
 9/12/11  
 D.N.F.  
 DESTROYED  
 7/2/21, JMR

O.D.O.T. DISTRICT 2 SURVEY OFFICE

PERSONNEL \_\_\_\_\_

REFERENCE NO. 19A

SHEET 23 OF 30

NOTES FINGER \_\_\_\_\_

DATE 5-24-11

ROUTE SR 587

H.C. MOSER

WEATHER SUNNY

COUNTY SENECA

R.C. HARBAUGH

TEMP. 75°

TOWNSHIP BIG SPRINGS

SECTION 11

T 1 N R 13 E

TYPE MONUMENT PK/WASHER

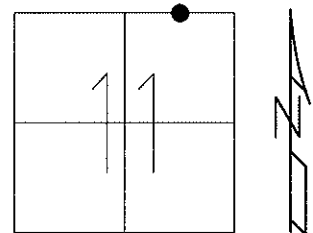
ON SURFACE - ~~BELOW~~ ON \_\_\_\_\_

LEFT - C PAV'T - RIGHT ON \_\_\_\_\_

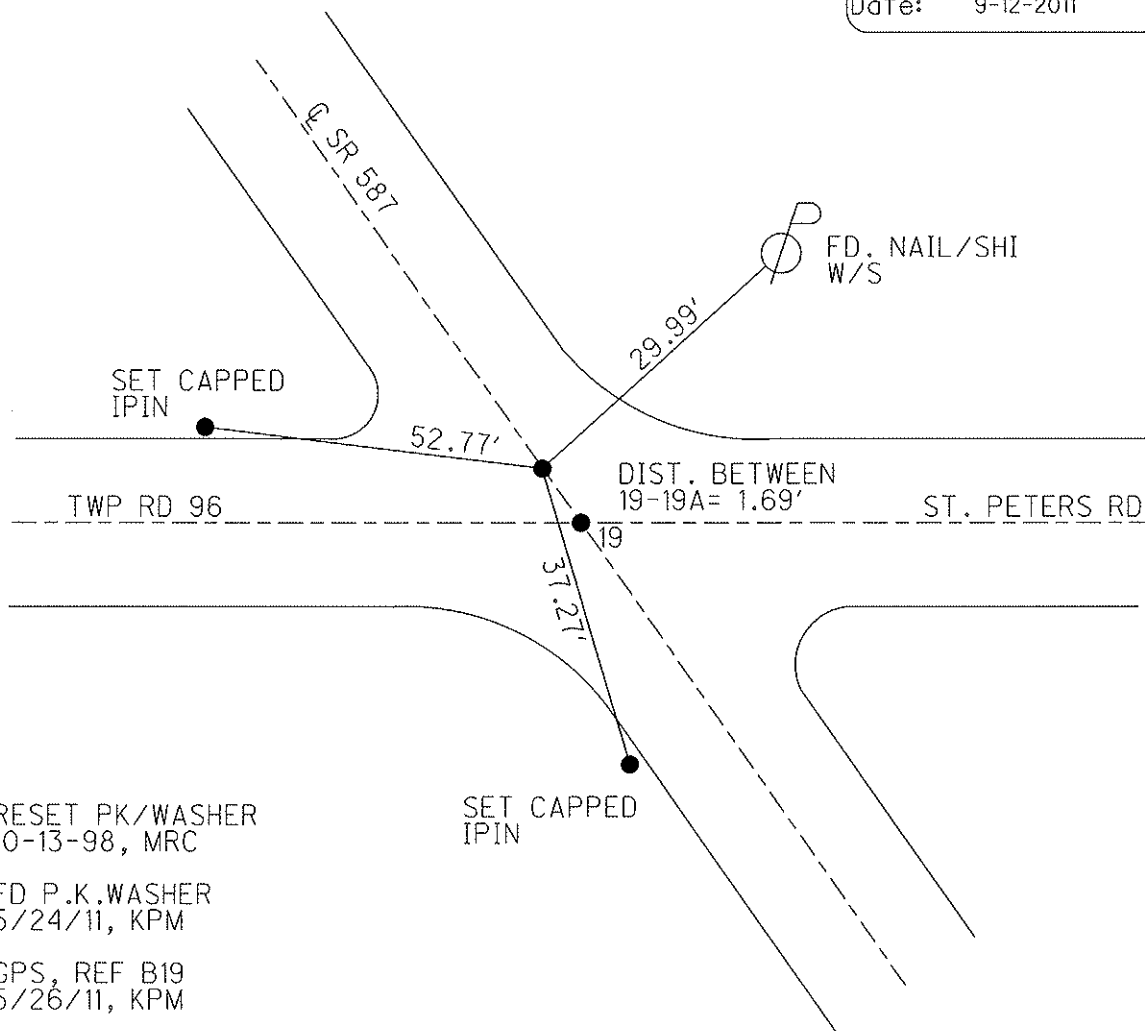
11.0' TO RT. EDGE PAVEMENT

S.L.M. 320+04.69

Grid: Northing: 510622.915 Easting: 1739495.376



Preventative Maintenance  
Chip & Seal  
Existing Point Uncovered  
Date: 9-12-2011



# O.D.O.T. DISTRICT 2 SURVEY OFFICE

PERSONNEL

REFERENCE NO. 19

SHEET 20 OF 24

NOTES CANTERBURY

H.C. Rousos

DATE 5-5-98

ROUTE #587

R.C. LOEHRKE

WEATHER SUN

COUNTY SENECA

TEMP. +65°F

TOWNSHIP BIG SPRINGS

SECTION 11

T 1 N R 13 E

TYPE MONUMENT P.K. & WASHER ATOP R.R. SPK.

ON SURFACE - BELOW ON SURFACE

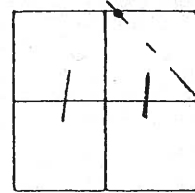
~~LEFT - C~~ ~~PAV'T. - RIGHT~~ ON Q

TO EDGE PAVEMENT

S.L.M. PTA = 9+754.60

PT B = 9+756.3

19-A



PT A = LG RR. SPK. 2" DOWN  
STA = 9+754.60  
ON Q, ON C.R. TO EAST

PT B = LG. R.R. SPK @ SURFACE  
STA 9+756.30  
ON Q BOTH

RESET P.K./WASHER  
10-13-98  
M.R.C.

