

O.D.O.T. DISTRICT 2 SURVEY OFFICE (USE ONLY)

PERSONNEL

REFERENCE NO. 21 A

SHEET 26 OF 30

NOTES MILLER DATE 12/28/23
 H.C. RHOADES WEATHER RAIN
 R.C. MILLER TEMP. 44°

ROUTE SR 587
 COUNTY SENECA
 TOWNSHIP BIG SPRINGS
 SECTION 2
 T 1 N R 13 E

DWG BY NIESE PID PAVING TRAIN

TYPE MONUMENT P.K.NAIL

ON SURFACE - ~~BELOW~~ ON

OFFSET 2.1' LT : ~~RT~~

13.6' TO RT EDGE PAVEMENT

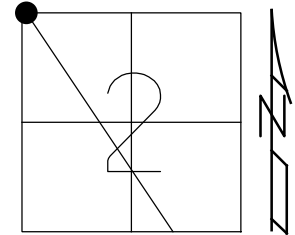
STATION: 383+99

HORZ.DATUM: NAD83 2011

GEOID: NAVD88 2018

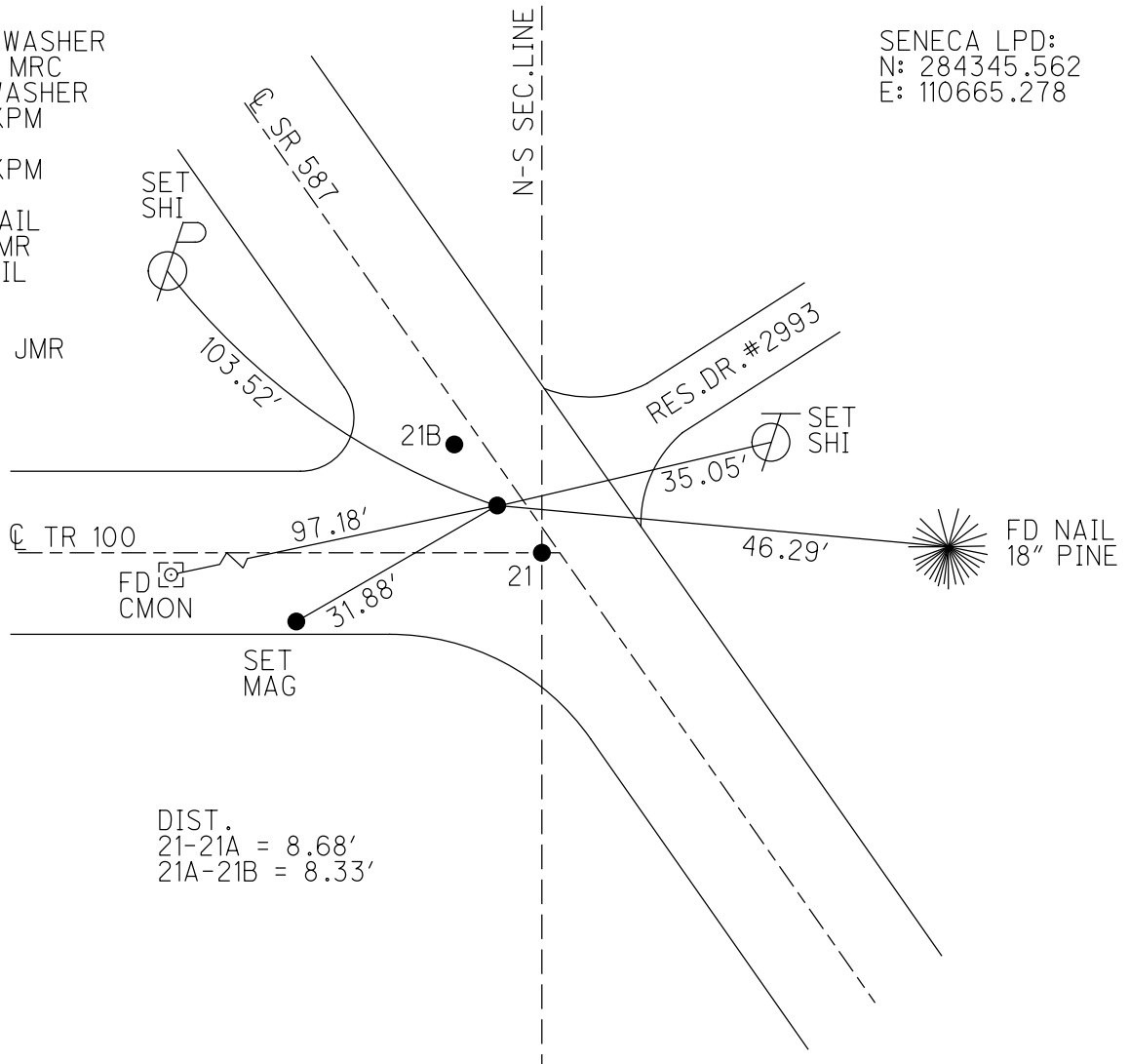
GRID: NORTHING: 515962.191

EASTING: 1735938.009



RECORD:
 SET P.K./WASHER
 10/13/98, MRC
 FD P.K./WASHER
 5/25/11, KPM
 REFB21
 5/26/11, KPM
 9/12/11
 FD P.K. NAIL
 7/2/21, JMR
 FD P.K.NAIL
 REF21A
 9/15/23,
 12/28/23, JMR

SENECA LPD:
 N: 284345.562
 E: 110665.278

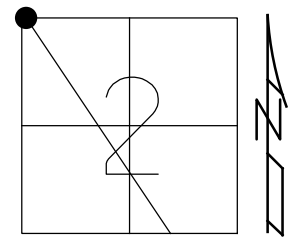


DIST.
 21-21A = 8.68'
 21A-21B = 8.33'

O.D.O.T. DISTRICT 2 SURVEY OFFICE (USE ONLY)

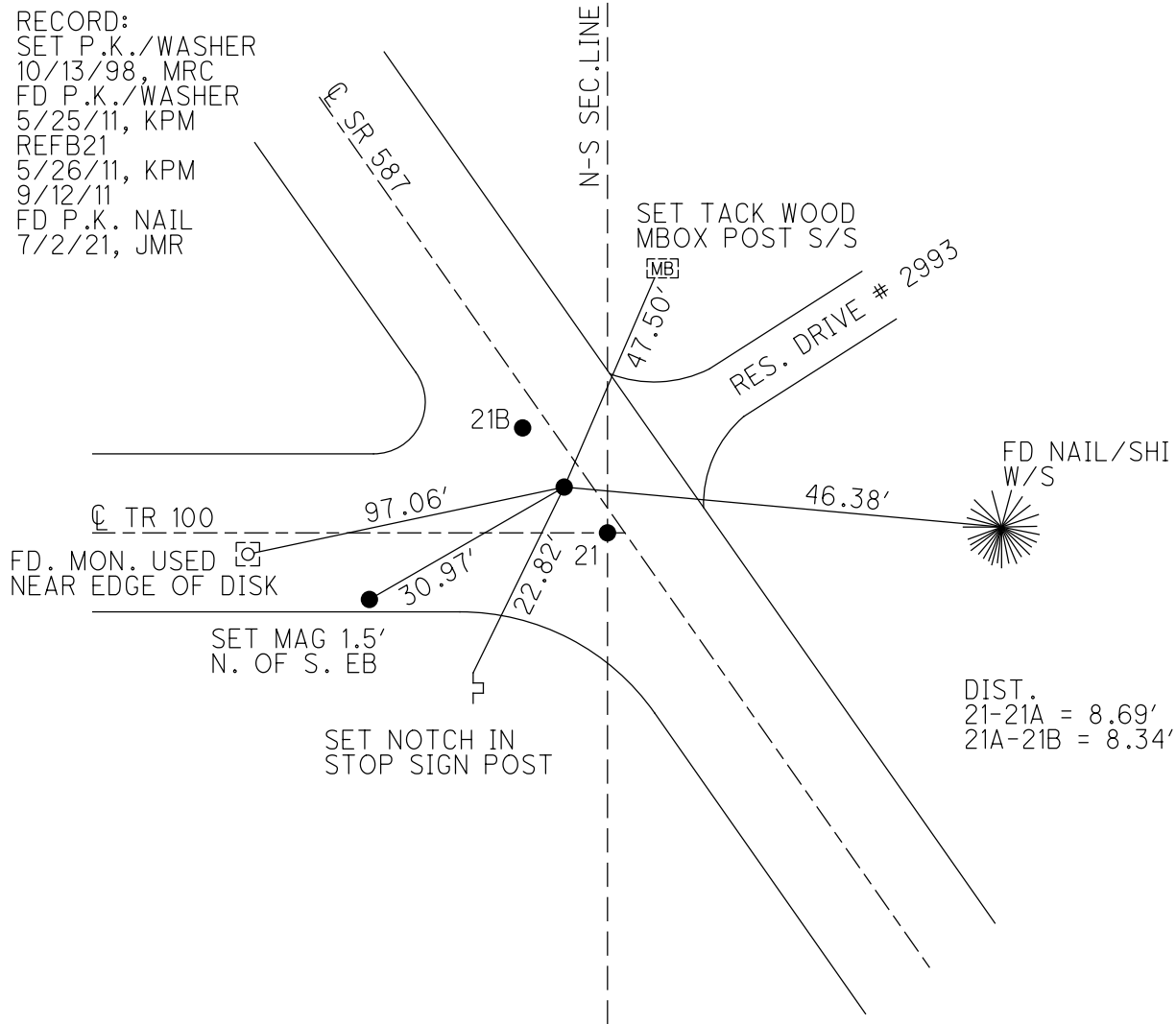
PERSONNEL _____ REFERENCE NO. 21 A SHEET 26 OF 30
 NOTES FINGER DATE 5/25/11 ROUTE SR 587
 H.C. MOSER WEATHER SUNNY COUNTY SENECA
 R.C. LUMBREZER TEMP. 60° TOWNSHIP BIG SPRINGS
 DWG BY NIESE PID PAVE TRAIN SECTION 2
 T 1 N R 13 E

TYPE MONUMENT P.K./WASHER
 ON SURFACE - ~~BELOW~~ ON _____
 OFFSET ☐ PAVEMENT 2.1' LT : ~~RT~~
13.6' TO RT EDGE PAVEMENT
 STATION: 383+99



HORZ.DATUM: NAD83 GEOID: 2009
 GRID: NORTHING: 515962.190 EASTING: 1735938.025

RECORD:
 SET P.K./WASHER
 10/13/98, MRC
 FD P.K./WASHER
 5/25/11, KPM
 REFB21
 5/26/11, KPM
 9/12/11
 FD P.K. NAIL
 7/2/21, JMR



DIST.
 21-21A = 8.69'
 21A-21B = 8.34'

O.D.O.T. DISTRICT 2 SURVEY OFFICE (USE ONLY)

PERSONNEL

REFERENCE NO. 21 A

SHEET 26 OF 30

NOTES FINGER

DATE 5/25/11

ROUTE SR 587

H.C. MOSER

WEATHER SUNNY

COUNTY SENECA

R.C. LUMBREZER

TEMP. 60°

TOWNSHIP BIG SPRINGS

DWG BY NIESE

PID PAVE TRAIN

SECTION 2

T 1 N R 13 E

TYPE MONUMENT P.K./WASHER

ON SURFACE - ~~BELOW~~ ON

OFFSET CL PAVEMENT 2.1' LT : ~~RT~~

13.6' TO RT EDGE PAVEMENT

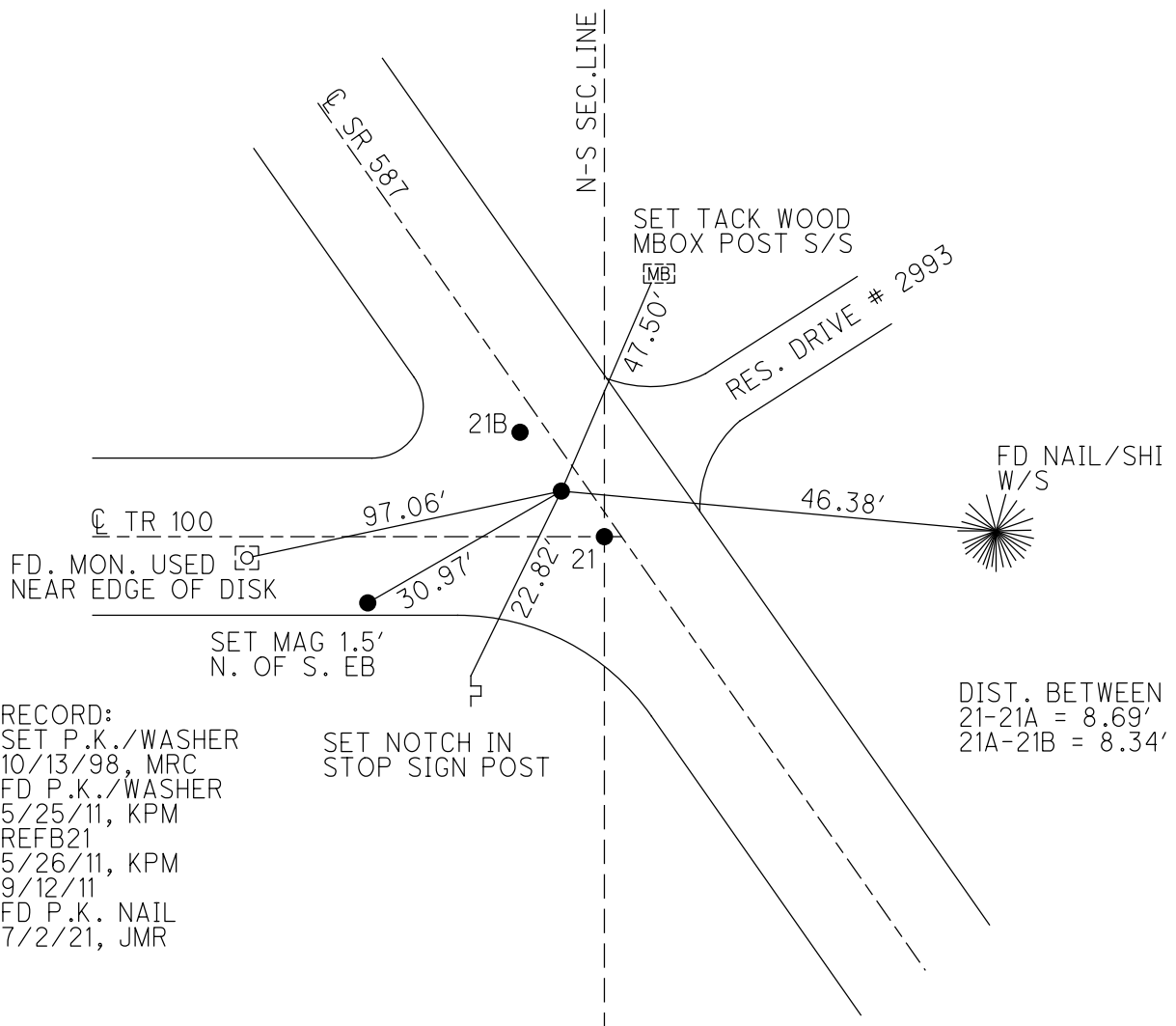
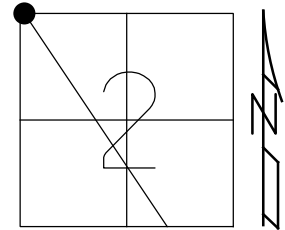
STATION: 383+99

HORZ.DATUM: _____

GEOID: _____

GRID: NORTHING: 515962.190

EASTING: 1735938.025



RECORD:
 SET P.K./WASHER
 10/13/98, MRC
 FD P.K./WASHER
 5/25/11, KPM
 REFB21
 5/26/11, KPM
 9/12/11
 FD P.K. NAIL
 7/2/21, JMR

SET NOTCH IN
 STOP SIGN POST

DIST. BETWEEN
 21-21A = 8.69'
 21A-21B = 8.34'

O.D.O.T. DISTRICT 2 SURVEY OFFICE

PERSONNEL _____

REFERENCE NO. 21 A

SHEET 26 OF 30

NOTES FINGER

DATE 5-25-11

ROUTE SR 587

H.C. MOSER

WEATHER SUNNY

COUNTY SENECA

R.C. LUMBREZER

TEMP. 60°

TOWNSHIP BIG SPRINGS

SECTION 2

T 1 N R 13 E

TYPE MONUMENT P.K./WASHER

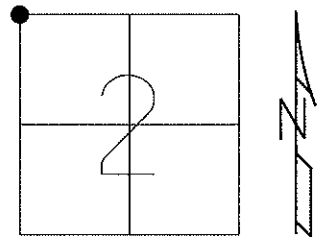
ON SURFACE - ~~BELOW~~ ON _____

LEFT - ~~C~~ PAV'T - RIGHT 2.1'

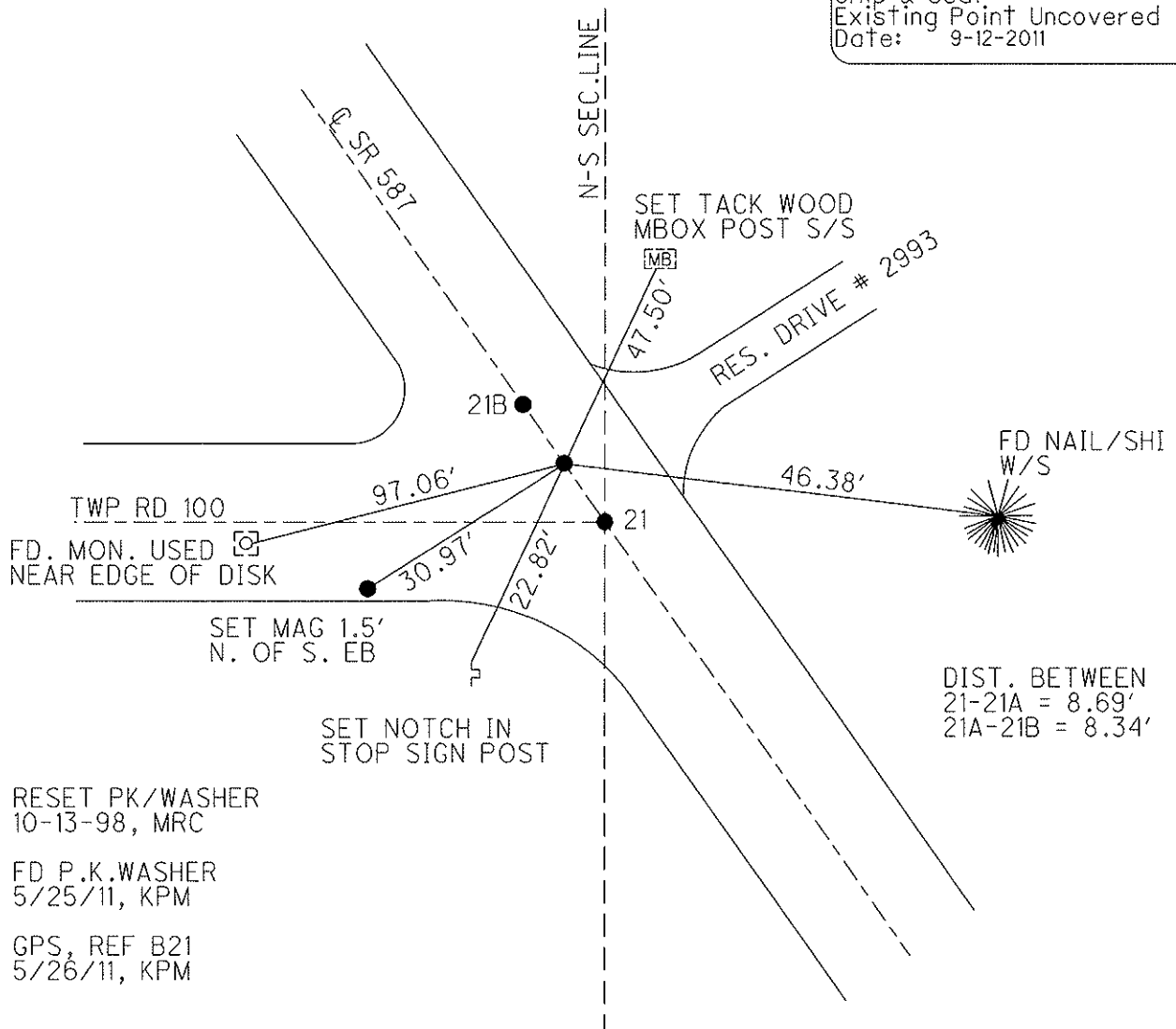
13.6' TORT. EDGE PAVEMENT

S.L.M. 383+99

Grid: Northing: 515962.190 Easting: 1735938.025



Preventative Maintenance
Chip & Seal
Existing Point Uncovered
Date: 9-12-2011



O.D.O.T. DISTRICT 2 SURVEY OFFICE

PERSONNEL

REFERENCE NO. 21

SHEET 22 OF 24

NOTES CANTERBURY

H.G. ROUSOS

R.C. LOEHRKE

DATE 5-5-98

WEATHER SUN

TEMP. +65° F

ROUTE # 587

COUNTY SENECA

TOWNSHIP BIG SPRINGS

SECTION 2

T1 N R 13 E

TYPE MONUMENT P.K. & WASHER ATOP R.R. SPK.

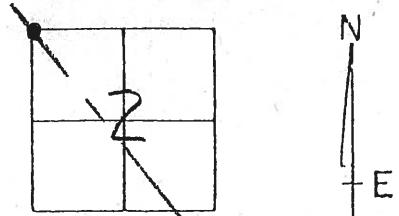
ON SURFACE - ~~BELOW~~ ON SURFACE

LEFT - ~~C~~ PAV'T. - RIGHT 1.4' LT &

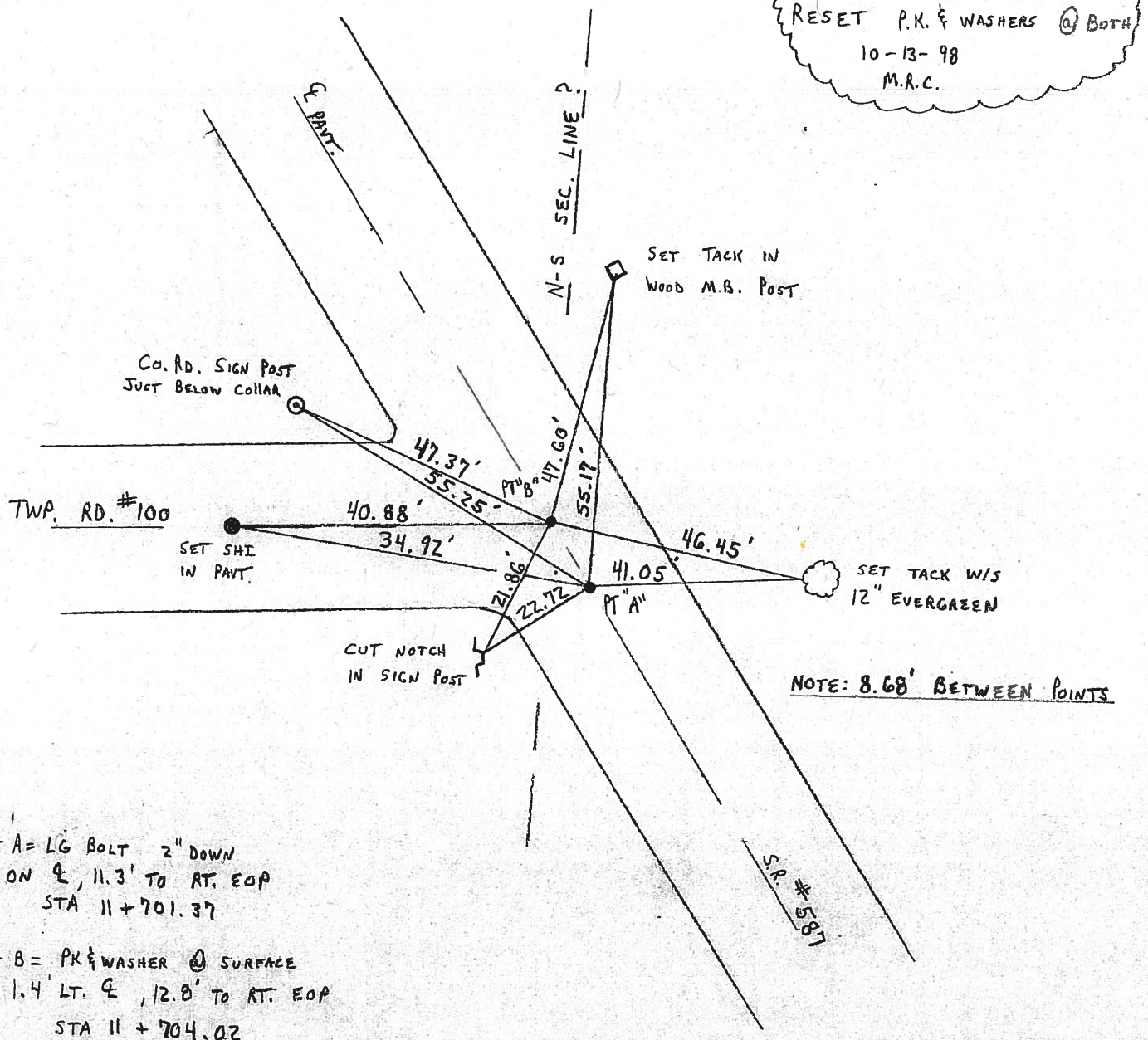
12.8' TO RT. EDGE PAVEMENT

S.L. ~~M.K.~~ = 11+704.02

21-A



RESET P.K. & WASHERS @ BOTH
 10-13-98
 M.R.C.



NOTE: 8.68' BETWEEN POINTS

PT A = LG BOLT 2" DOWN
 ON &, 11.3' TO RT. EOP
 STA 11+701.37

PT B = P.K. & WASHER @ SURFACE
 1.4' LT. &, 12.8' TO RT. EOP
 STA 11+704.02

O.D.O.T. DISTRICT 2 SURVEY OFFICE

PERSONNEL _____

REFERENCE NO. 21

SHEET 22 OF _____

NOTES CRONIN

DRAWN 9/3/85

H.C. RIPPLE

DATE 8/26/85

R.C. BARBOUR

WEATHER _____

GEYMAN

TEMP. _____

ROUTE # 587

COUNTY SENECA

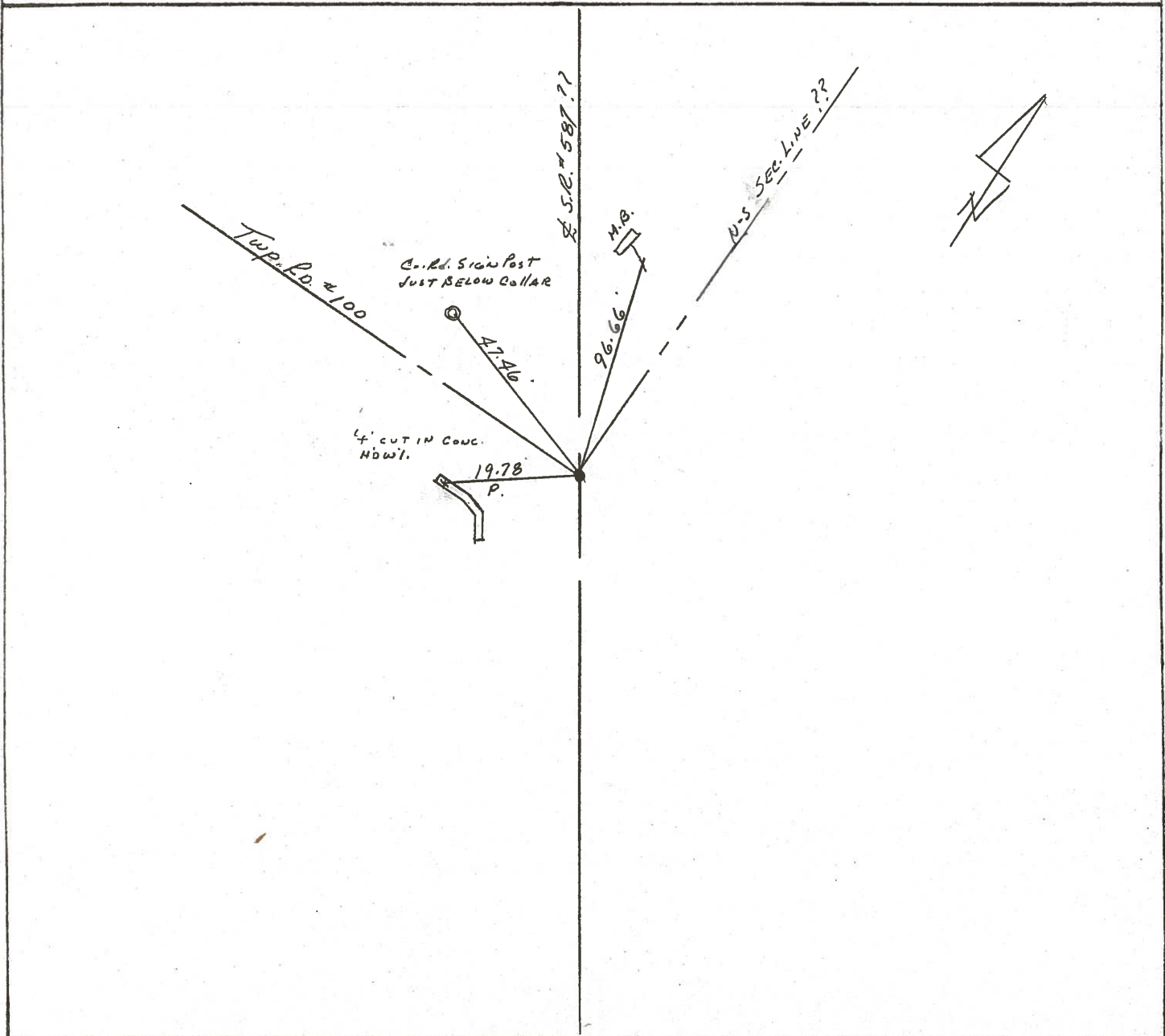
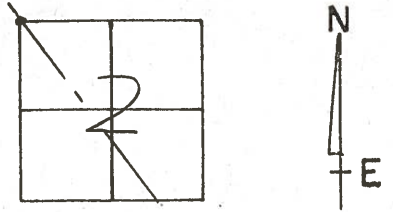
TOWNSHIP BIG SPRINGS

SECTION 2

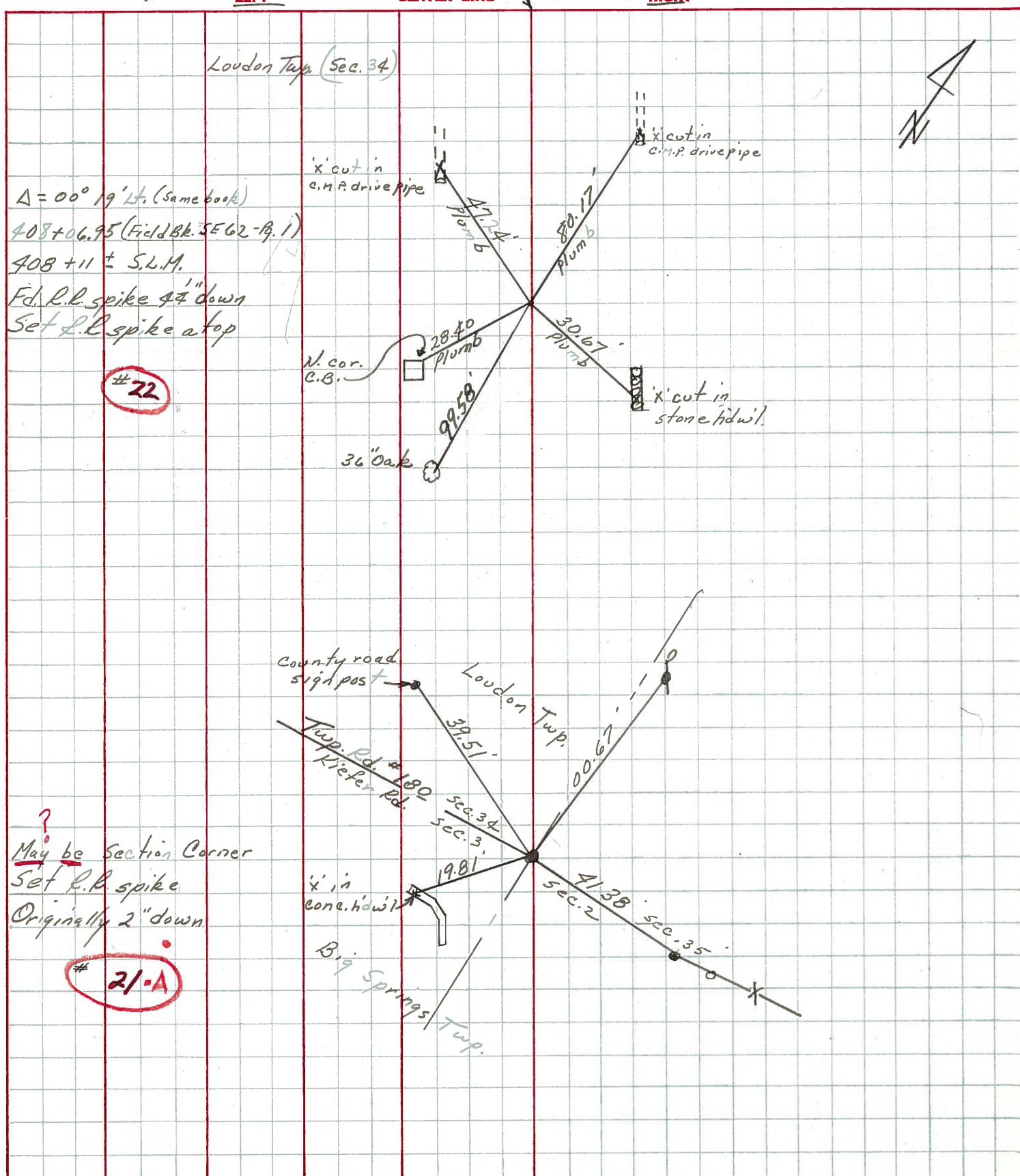
T. 1 N. R. 13 E.

TYPE MONUMENT P.K. & WASHER AT P. R.R. SPR.
 ON SURFACE - BELOW ON SURFACE
 LEFT - PAV'T. - RIGHT 1' H & PAV'T
 TO EDGE PAVEMENT
 S.L.M. _____

21-A



PERSONNEL Ash TITLE _____ PERSONNEL Cronin TITLE _____ COUNTY Seneca DATE 10/2/72
 PERSONNEL Ripple TITLE _____ PERSONNEL Anderson TITLE _____ S. R. # 587 WEATHER sunny
 SEC. _____ TEMP. 58°
 DESCRIPTION Wyandot-Seneca Co. Line - Northwest JOB NO. _____



| PERSONNEL | TITLE | PERSONNEL | TITLE | COUNTY | DATE | WEATHER | TEMP. |
|-----------|-------|-----------|-------|-----------|----------|---------|-------|
| Schneider | | | | Seneca | 11-10-69 | Cloudy | 40° |
| Mosser | | | | S. R. 587 | | | |
| Barbour | | | | SEC. | | | |
| Potts | | | | | | | |

DESCRIPTION New Riegel to Eastora U.S. 224 JOB NO. _____

23

21-A

20

19

